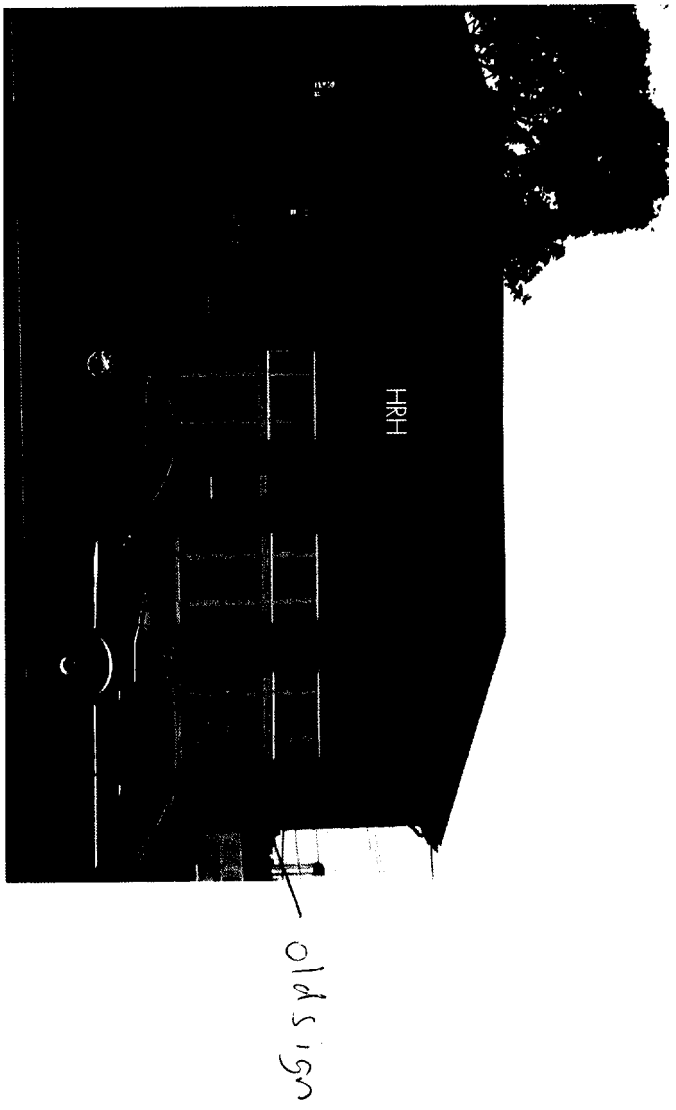
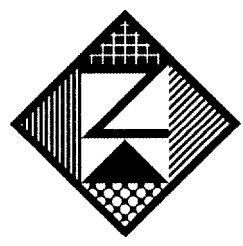


SIGN NO. 1—DIMENSIONAL WALL GRAPHICS
SCALE: 1"=1'-0"



CONGRESS STREET ELEVATION
NO SCALE

1/2" THICK ACRYLIC PAINTED TO MATCH CORPORATE LOGO:
WHITE, GREEN PMS 376, BLUE PMS 295, ORANGE PMS 173
STUD MOUNTED WITH 1/4" PROJECTION



Neokraft
SIGN S

Neokraft Signs Inc.
686 Main Street
Lewiston, Maine 04240
Telephone: 207.782.9654
Facsimile: 207.782.0009
1.800.339.2258
<http://www.neokraft.com>

Custom Sign Fabrication

Except for designs supplied by the client, all ideas, plans or arrangements indicated on this drawing are copyrighted and owned by Neokraft Signs Inc. and shall not be reproduced, used by or disclosed to any person, firm or corporation without written permission of Neokraft Signs Inc.

HRH Corporation
4594

PERMIT DRAWING

Location:	959 Congress Street
	Portland, Maine
Drawing No.:	1 of 3
Drawn by:	DS
Date:	11.04.2005
Gen Ref.:	

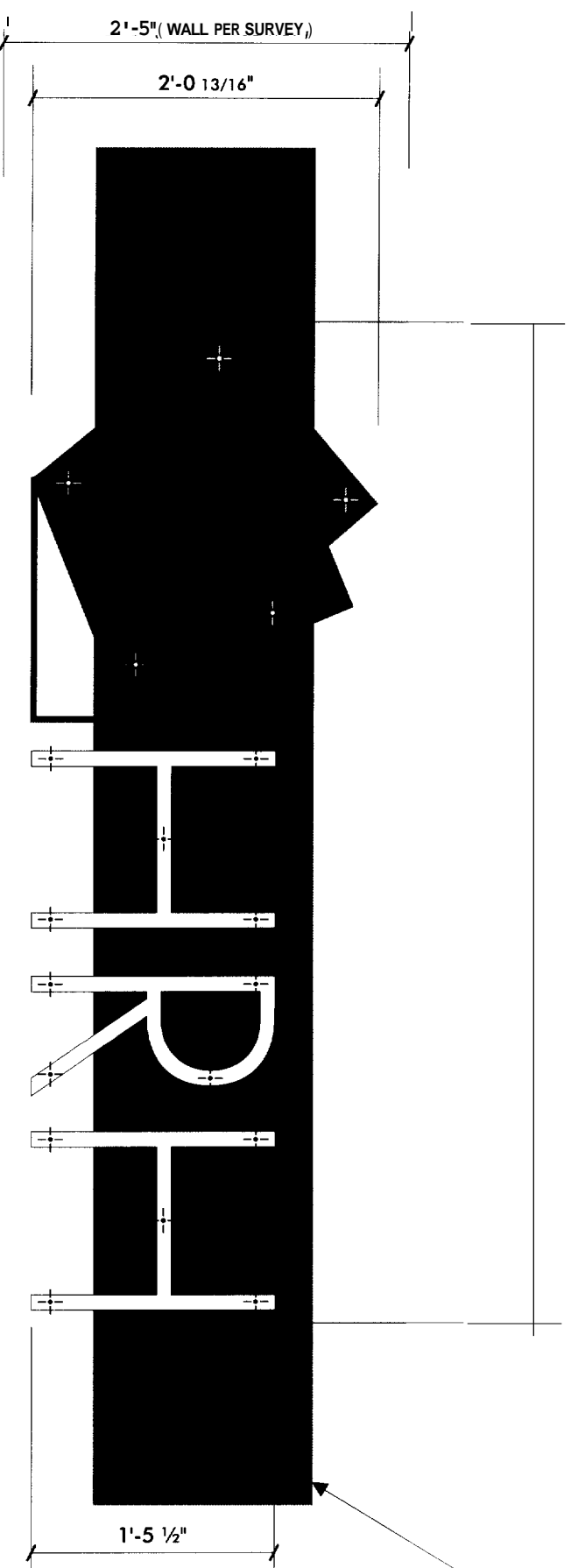
Letter	Letter Height (in.)	Face Area (sq.in.)	Side Area (sq.in.)	144 mph wind Face Load Force (lbs.)	Wind Side Load Force (lbs.)
H	24.8	719.5968	12.4	414	8

Screw minor thread diameter (in.)	Screw Area (psf/each)	Minimum No. of Screws	Total screws cross-sectional area (sq. in.)	Total Screws Shear Strength lbs.
0.25	0.049	5	0.245	3927

Letter	Letter Height (in.)	Face Area (sq.in.)	Side Area (sq.in.)	144 mph wind Face Load Force (lbs.)	Wind Side Load Force (lbs.)
H	17.5	183.75	8.75	106	6

Screw minor thread diameter (in.)	Screw Area (psf/each)	Minimum No. of Screws	Total screws cross-sectional area (sq. in.)	Total Screws Shear Strength lbs.
0.25	0.049	4	0.196	3142

Assumptions and Facts
The point of failure will be the aluminum screws in shear at the minor thread diameter.
144 mph wind speed is equal to 82.7 lbs./sq. ft. (0.574 lbs./sq.in.)
Tensile strength at break for 3003 Aluminum is 16,000 psi.
Average face area of a sign letter is 0.6 x height squared.



1 3/2" x 80" RECESSED BRICK SECTION
PER SURVEY

1/2" THICK ACRYLIC PAINTED TO MATCH CORPORATE LOGO
WHITE, GREEN PMS 376, BLUE PMS 295, ORANGE PMS 173
STUD MOUNTED WITH 1/4" PROJECTION

SIGN NO.2— DIMENSIONAL WALL GRAPHICS
SCALE: 1"=1'-0"



ST. JOHN STREET ELEVATION
NO SCALE

LOGO

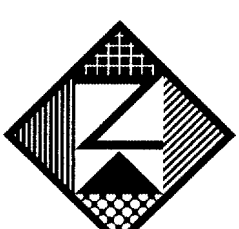
Letter Depth (in.)	Letter Height (in.)	Face Area (sq.in.)	Side Area (sq.in.)	144 mph wind Face Load Force (lbs.)	Wind Side Load Force (lbs.)
0.5	24.8	719.5968	12.4	414	8
Total screws cross-sectional area (sq. in.)			0.245	Total Screws Shear Strength lbs.	
Screw minor thread diameter (in.)			0.049	5	
Screw Area (sq/each)			0.049	3927	

LETTERS

Letter Depth (in.)	Letter Height (in.)	Face Area (sq.in.)	Side Area (sq.in.)	144 mph wind Face Load Force (lbs.)	Wind Side Load Force (lbs.)
0.5	17.5	183.75	8.75	106	6
Total screws cross-sectional area (sq. in.)			0.196	Total Screws Shear Strength lbs.	
Screw minor thread diameter (in.)			0.049	4	
Screw Area (sq/each)			0.049	3142	

ASSUMPTIONS AND FACTS

The point of failure will be the aluminum screws in shear at the minor thread diameter.
144 mph wind speed is equal to 82.7 lbs./sq. ft. (0.574 lbs./sq.in.)
Tensile strength at break for 3003 Aluminum is 16,000 psi.
Average face area of a sign letter is 0.6 x height squared



Neokraft
SIGN S

Neokraft Signs Inc.
686 Main Street
Lewiston, Maine 04240
Telephone: 207.782.9654
Facsimile: 207.782.0009
1.800.339.2258
<http://www.neokraft.com>

Custom Sign Fabrication

Except for designs supplied by the client, all ideas, plans or arrangements indicated on this drawing are copyrighted and owned by Neokraft Signs Inc. and shall not be reproduced, used by or disclosed to any person, firm or corporation without written permission of Neokraft Signs Inc.

HRH Corporation
4594

PERMIT DRAWING

Location: 939 Congress Street
Portland, Maine

Drawing No.: 2 of 3

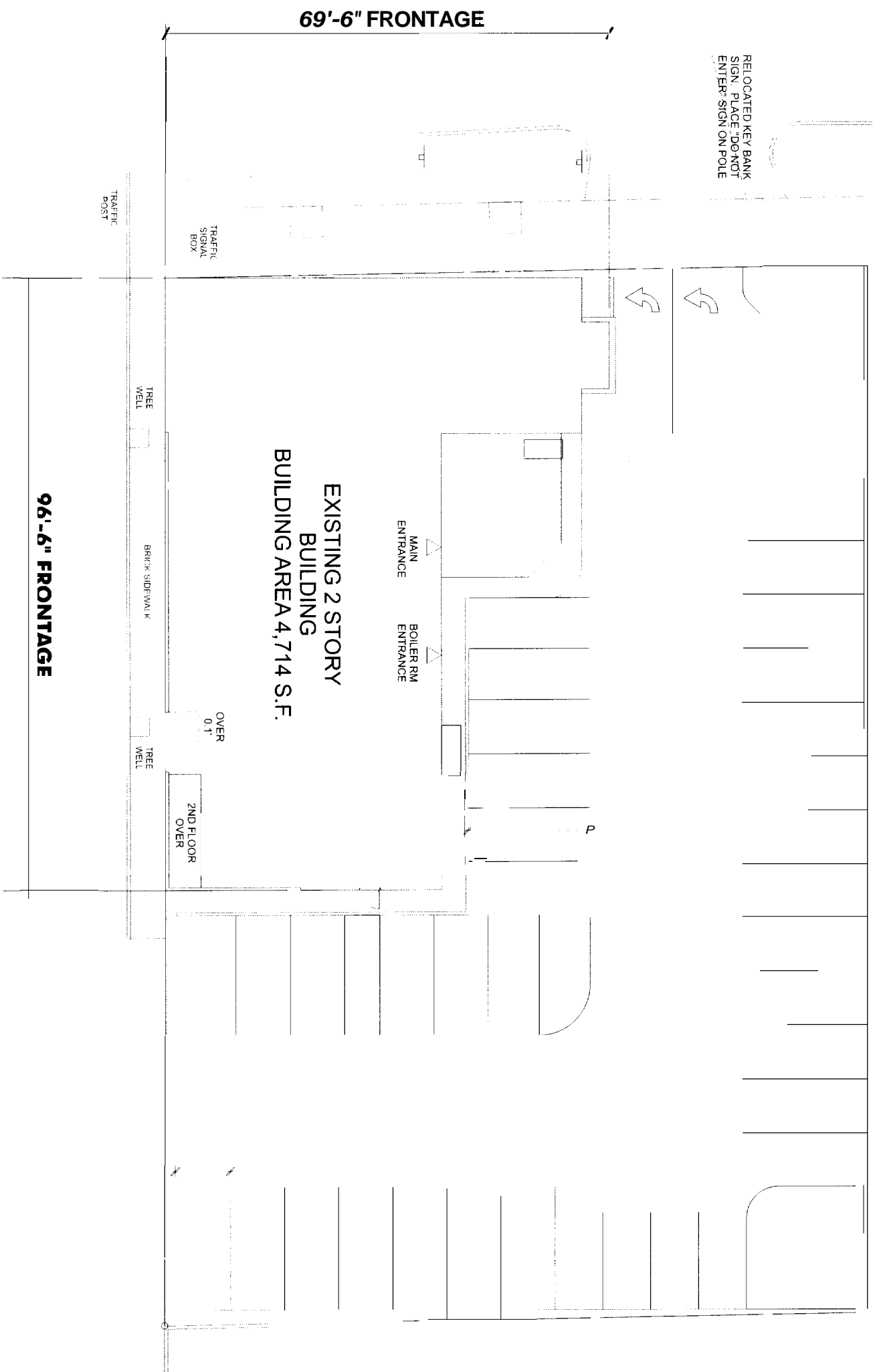
Drawn by: DS

Date: 11.04.2005

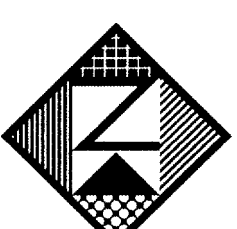
Gen Ref.: _____

N/F
CONSUELO S. LOGAN
4000215
PLAN REFERENCE 2

RELOCATED KEY BANK
SIGN. PLACE "DO NOT
ENTER" SIGN ON POLE



N/F
DOMINIC REALI
125231331



Neokraft
S I G N S

Neokraft Signs Inc.
686 Main Street
Lewiston, Maine 04240
Telephone: 207.782.9654
Facsimile: 207.782.0009
1.800.339.2258
<http://www.neokraft.com>
Custom Sign Fabrication

Except for designs supplied by the client, all ideas, plans or arrangements indicated on this drawing are copyrighted and owned by Neokraft Signs Inc. and shall not be reproduced, used by or disclosed to any person, firm or corporation without written permission of Neokraft Signs Inc.

HRH Corporation
4594

PERMIT DRAWING

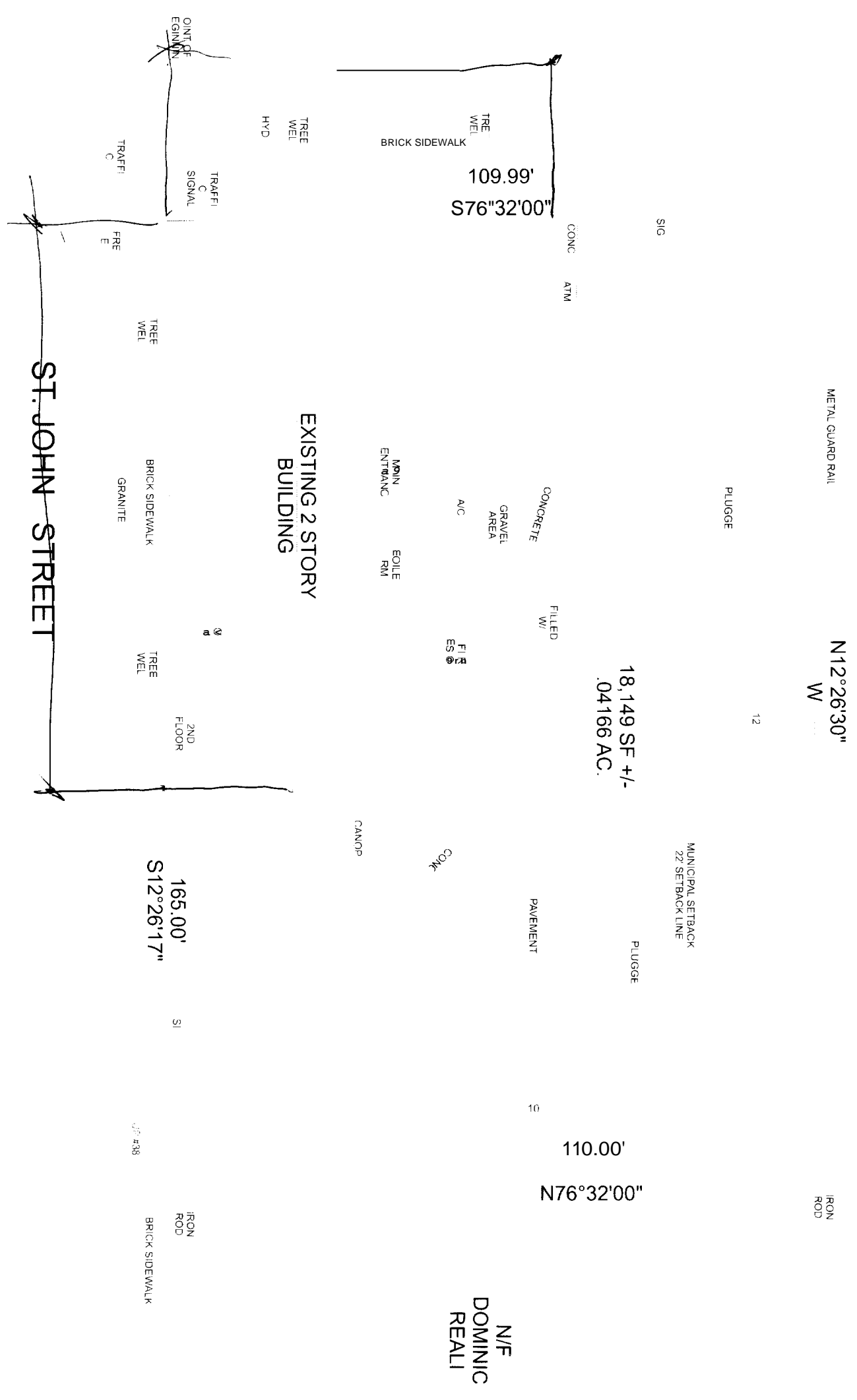
Location:	959 Congress Street Portland, Maine
Drawing No.:	1 of 3
Drawn by:	DS
Date:	11.04.2005
Gen Ref.:	

SITE PLAN
SCALE: 1"=20.0" (VERIFY)

ONE WAY TRAFFIC

CONGRESS

N/F
CONSUELO S.
LOGAN
4000/215
PLAN REFERENCE 2



EXISTING 2 STORY BUILDING

ST. JOHN STREET

18,149 SF +/-
.04166 AC.

110.00'
N76°32'00"

165.00'
S12°26'17"

LIMITED USE
SOME OBJECTS DO NOT IMPROVE
MORE DO NOT PRINT

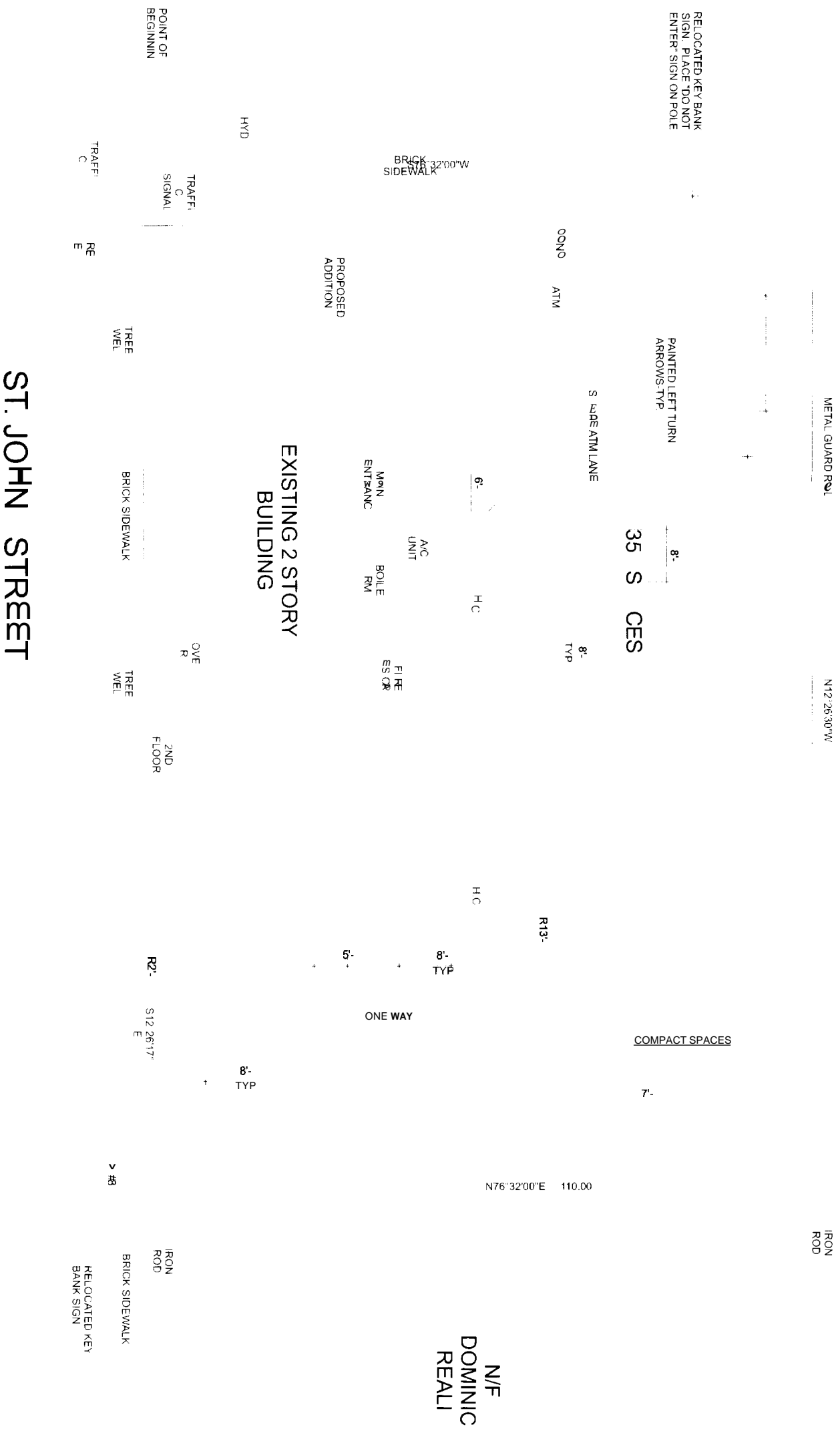
NEED
COR OR
A1 OR
EPS OR
PPF

EXISTING CONDITIONS

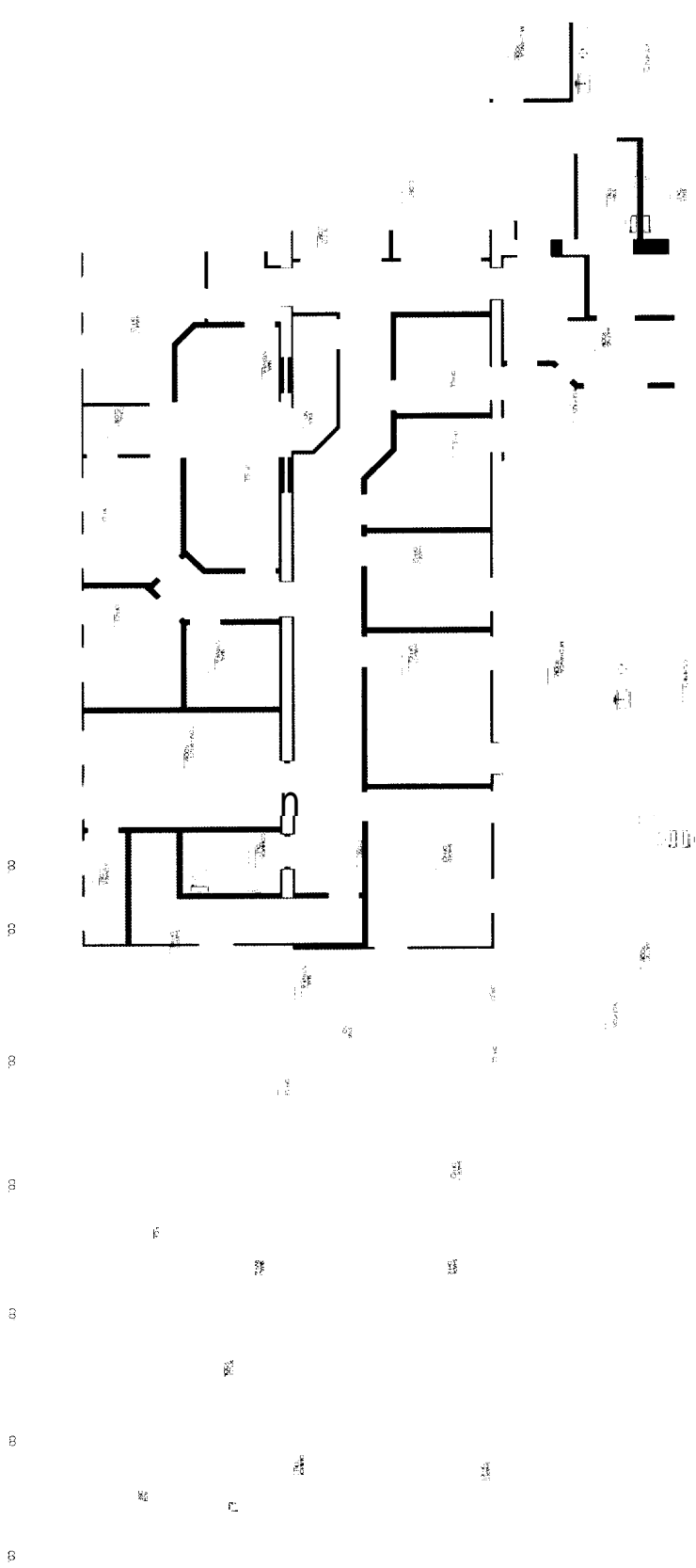
ONE WAY TRAFFIC

N/F
CONSUELO S.
LOGAN
4000/215
PLAN REFERENCE 2

CONGRESS



PROPOSED CONDITIONS



```
ERROR: rangecheck
OFFENDING COMMAND: setdash
STACK:
0
] 10 0 ]
```