

SIGN NO. 1—DIMENSIONAL WALL GRAPHICS
SCALE: 1"=1'-0"

1/2" THICK ACRYLIC PAINTED TO MATCH CORPORATE LOGO:
WHITE, GREEN PMS 376, BLUE PMS 295, ORANGE PMS 173
STUD MOUNTED WITH 1/4" PROJECTION



CONGRESS STREET ELEVATION
NO SCALE

LOGO

Letter Depth (in.)	Letter Height (in.)	Face Area (sq.in.)	Side Area (sq.in.)	144 mph wind Face Load Force (lbs.)	Wind Side Load Force (lbs.)
0.5	24.8	719.5968	12.4	414	8

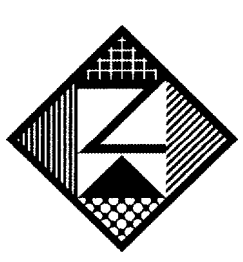
Screw minor thread diameter (in.)	Screw Area (sq/each)	Minimum No. of Screws	Total screws cross-sectional area (sq. in.)	Total Screws Shear Strength (lbs)
0.25	0.049	5	0.245	3927

LETTERS

Letter Depth (in.)	Letter Height (in.)	Face Area (sq.in.)	Side Area (sq.in.)	144 mph wind Face Load Force (lbs.)	Wind Side Load Force (lbs.)
0.5	17.5	185.75	8.75	106	6

Screw minor thread diameter (in.)	Screw Area (ps/each)	Minimum No. of Screws	Total screws cross-sectional area (sq. in.)	Total Screws Shear Strength (lbs)
0.25	0.049	4	0.196	3142

Assumptions and Facts
The point of failure will be the aluminum screws in shear at the minor thread diameter.
144 mph wind speed is equal to 82.7 lbs./sq. ft. (0.574 lbs./sq.in.)
Tensile strength at break for 3003 Aluminum is 16,000 psi.
Average face area of a sign letter is 0.5 x height squared.



Neokraft
S I G N S

Neokraft Signs Inc.
686 Main Street
Lewiston, Maine 04240
Telephone: 207.782.9654
Facsimile: 207.782.0009
1.800.339.2258
<http://www.neokraft.com>

Custom Sign Fabrication

Except for designs supplied by the client, all ideas, plans or arrangements indicated on this drawing are copyrighted and owned by Neokraft Signs Inc. and shall not be reproduced, used by or disclosed to any person, firm or corporation without written permission of Neokraft Signs Inc.

HRH Corporation
4594

PERMIT DRAWING

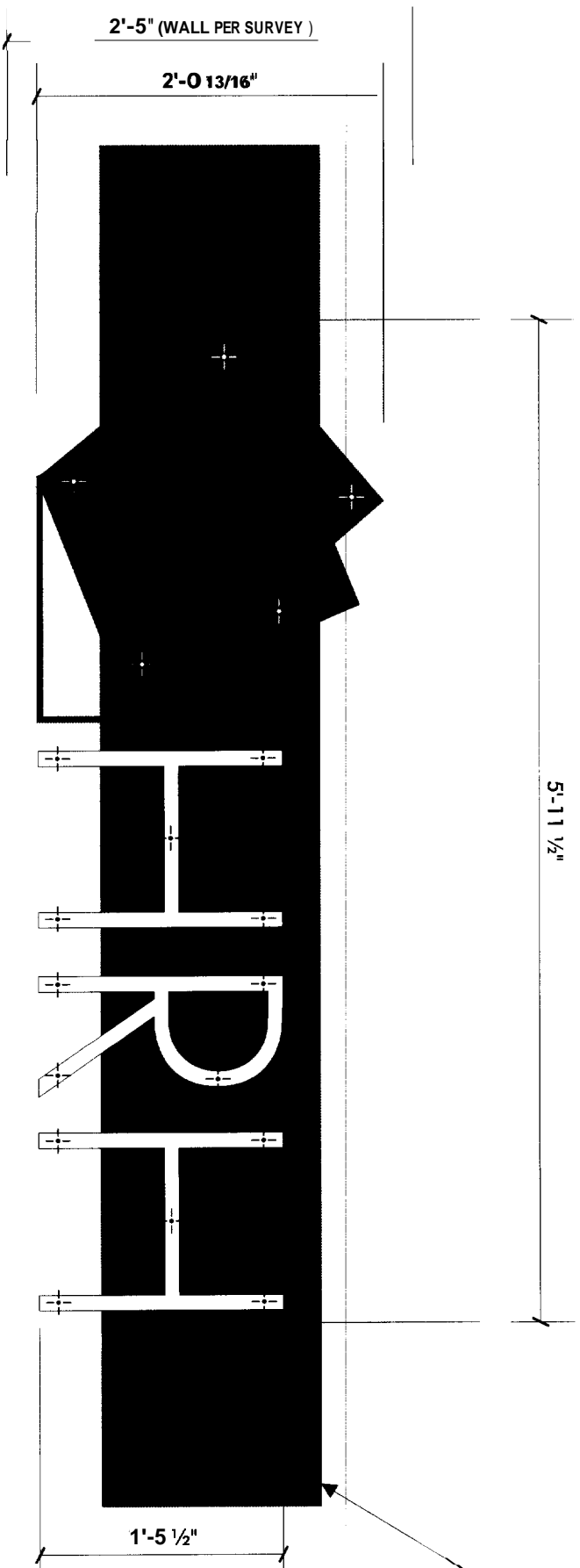
Location: 959 Congress Street
Portland, Maine

Drawing No.: 1 of 3

Drawn by: DS

Date: 11.04.2005

Gen Ref.:



1 5/8" x 86" RECESSED BRICK SECTION
PER SURVEY

1/2" THICK ACRYLIC PAINTED TO MATCH CORPORATE LOGO:
WHITE, GREEN PMS 376, BLUE PMS 295, ORANGE PMS 173
STUD MOUNTED WITH 1/4" PROJECTION

SIGN NO.2—DIMENSIONAL WALL GRAPHICS
SCALE: 1" = 1'-0"



ST. JOHN STREET ELEVATION
NO SCALE

LOGO

Letter Depth (in.)	Letter Height (in.)	Face Area (sq.in.)	Side Area (sq.in.)	144 mph wind Face Load Force (lbs.)	Wind Side Load Force (lbs.)
0.5	24.8	719.5968	12.4	414	8

Screw minor thread diameter (in.)	Screw Area (ps/each)	Minimum No. of Screws	Total screws cross- sectional area (sq. in.)	Total Screws Shear Strength lbs
0.25	0.049	5	0.245	3927

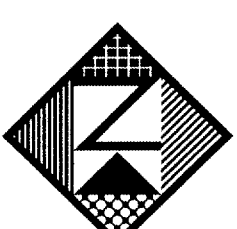
LETTERS

Letter Depth (in.)	Letter Height (in.)	Face Area (sq.in.)	Side Area (sq.in.)	144 mph wind Face Load Force (lbs.)	Wind Side Load Force (lbs.)
0.5	17.5	183.75	8.75	106	6

Screw minor thread diameter (in.)	Screw Area (ps/each)	Minimum No. of Screws	Total screws cross- sectional area (sq. in.)	Total Screws Shear Strength lbs.
0.25	0.049	4	0.196	3142

Assumptions and Facts

The point of failure will be the aluminum screws in shear at the minor thread diameter.
144 mph wind speed is equal to 82.7 lbs./sq. ft. (0.574 lbs./sq.in.)
Tensile strength at break for 3003 Aluminum is 16,000 psi.
Average face area of a sign letter is 0.6 x height squared.



Neokraft
SIGN S

Neokraft Signs Inc.
686 Main Street
Lewiston, Maine 04240
Telephone: 207.782.9654
Facsimile: 207.782.0009
1.800.339.2258
<http://www.neokraft.com>

Custom Sign Fabrication

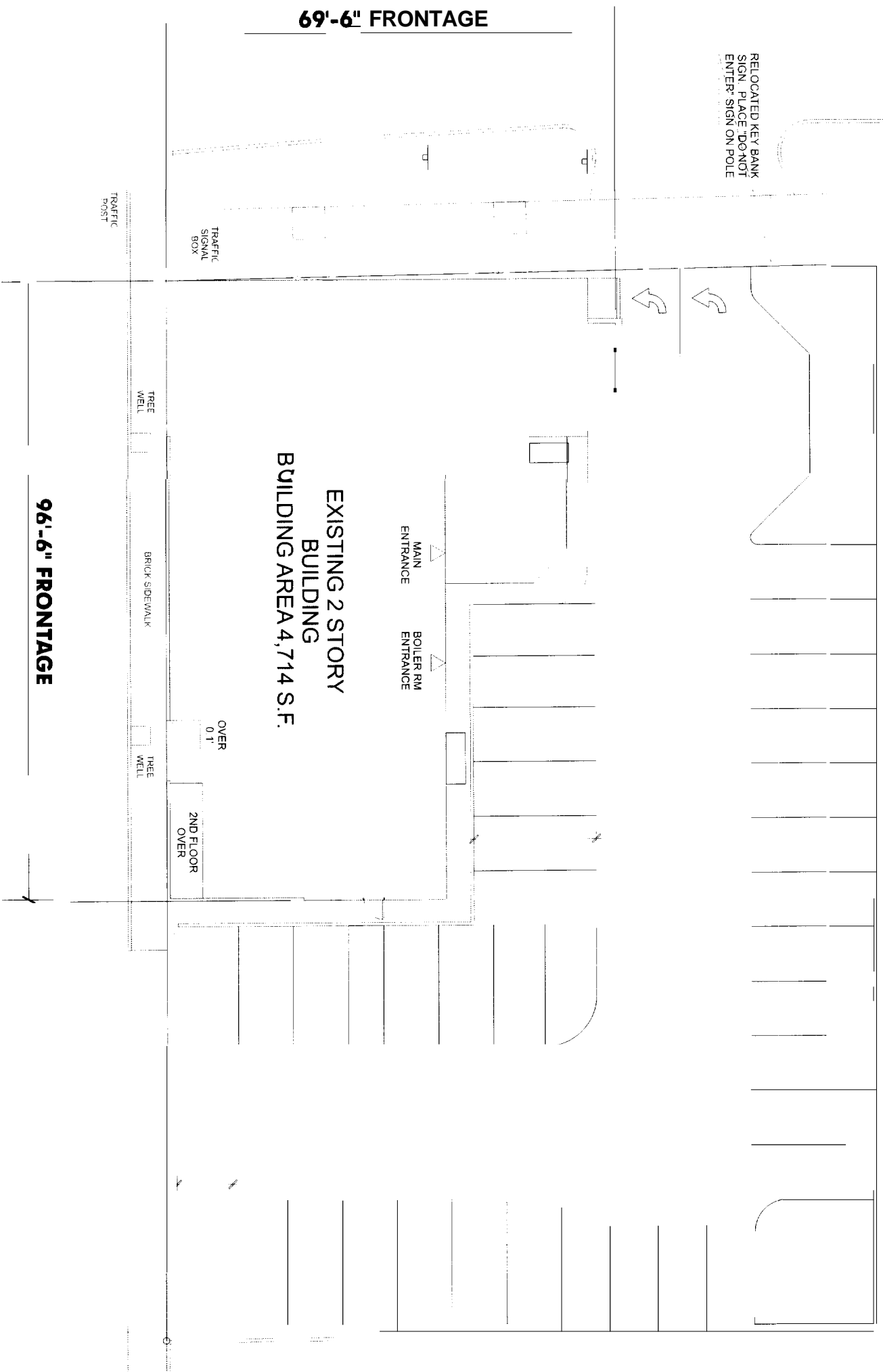
Except for designs supplied by the client, all ideas, plans or arrangements indicated on this drawing are copyrighted and owned by Neokraft Signs Inc. and shall not be reproduced, used by or disclosed to any person, firm or corporation without written permission of Neokraft Signs Inc.

HRH Corporation
4594

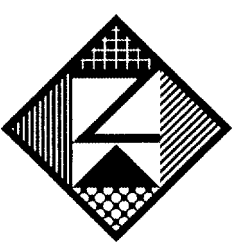
PERMIT DRAWING

Location: 959 Congress Street
Portland, Maine
Drawing No.: 2 of 3
Drawn by: DS
Date: 11.04.2005
Gen Ref.: _____

N/F
CONSUELO S. LOGAN
4/00/13
PLAN REFERENCE 2



N/F
DOMINIC REAL
12/23/331



Neokraft
SIGN S

Neokraft Signs Inc.
686 Main Street
Lewiston, Maine 04240
Telephone: 207.782.9654
Facsimile: 207.782.0009
1.800.339.2258
<http://www.neokraft.com>
Custom Sign Fabrication

Except for designs supplied by the client, all ideas, plans or arrangements indicated on this drawing are copyrighted and owned by Neokraft Signs Inc. and shall not be reproduced, used by or disclosed to any person, firm or corporation without written permission of Neokraft Signs Inc.

HRH Corporation
4594

PERMIT DRAWING

Location:	959 Congress Street Portland, Maine
Drawing No.:	1 of 3
Drawn by:	DS
Date:	11.04.2005
Gen Ref.:	

SITE PLAN
SCALE: 1"=20'-0" (VERIFY)

ONE WAY TRAFFIC

CONGRESS

N/F
CONSUELO S.
LOGAN
4000/215
PLAN REFERENCE 2

METAL ROD RAI
N12°26'30"
W

12

18,149 SF +/-
.04166 AC.

MUNICIPAL SETBACK
22' SETBACK LINE

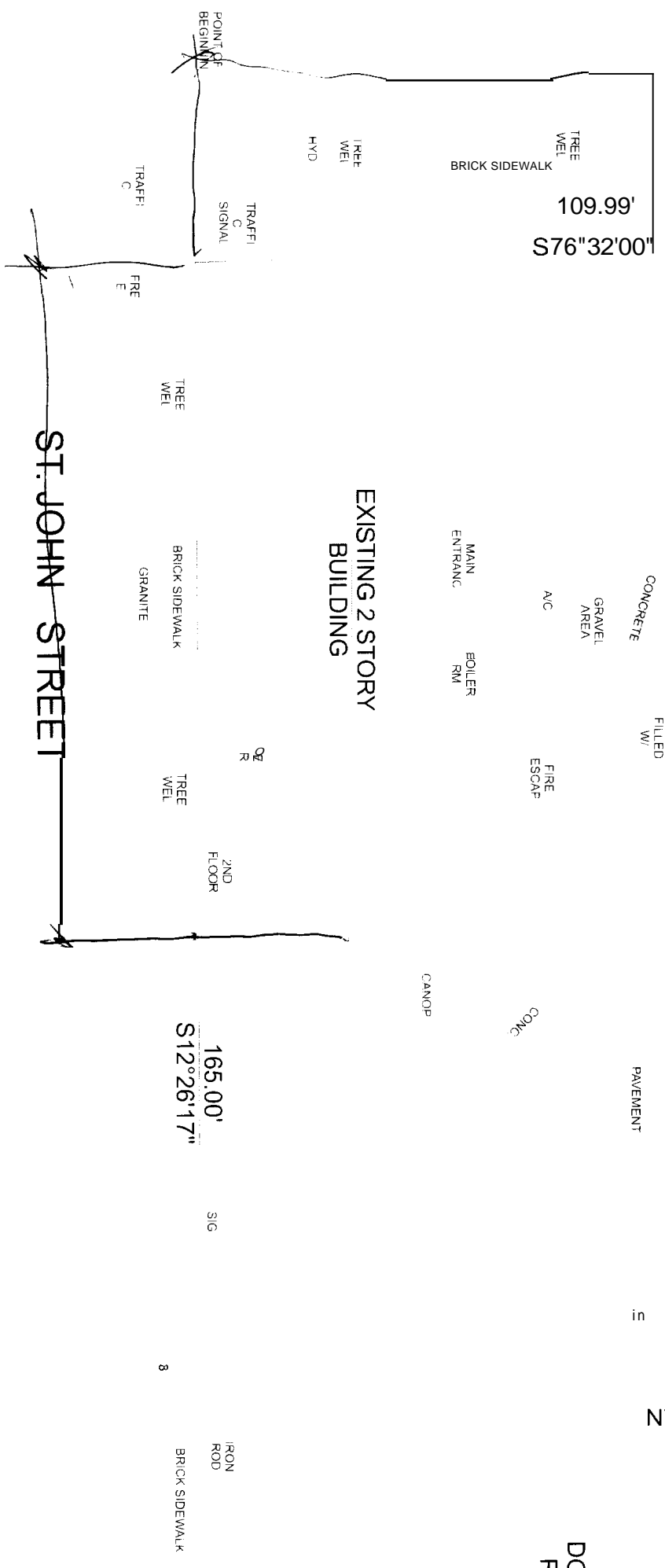
PLUGGE

PAVEMENT

110.00'
N76°32'00"

IRON ROD

N/F
DOMINIC
REALI



LIMITED USE
SOME OBJECTS DID NOT IMPRINT
MORE DID NOT PRINT

NEED

COR OR
AI OR
EPS OR
PPF

EXISTING CONDITIONS

ONE WAY TRAFFIC

N/F
CONSUELO S.
LOGAN
4000/215
PLAN REFERENCE 2

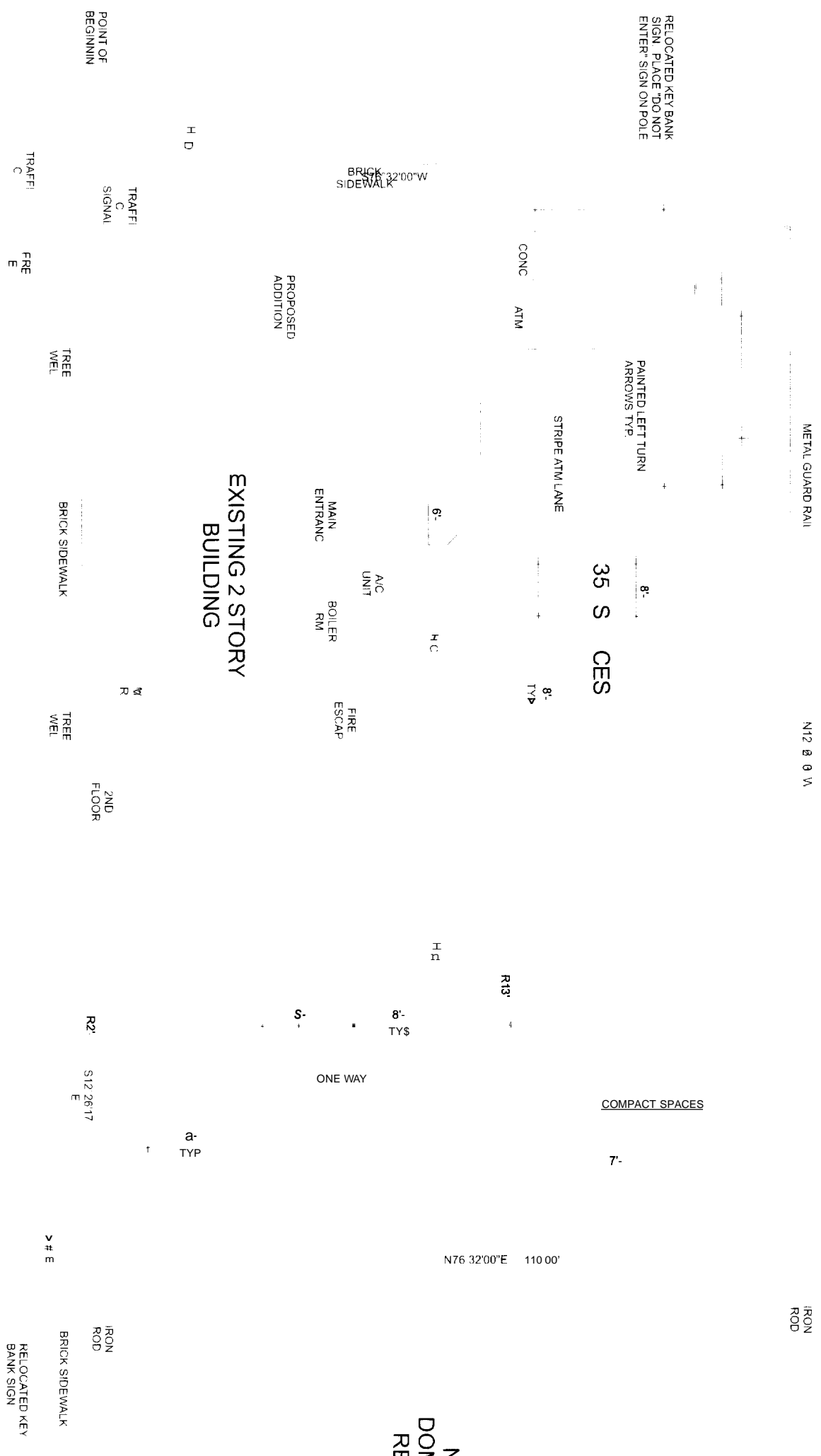
CONGRESS

35 S CES

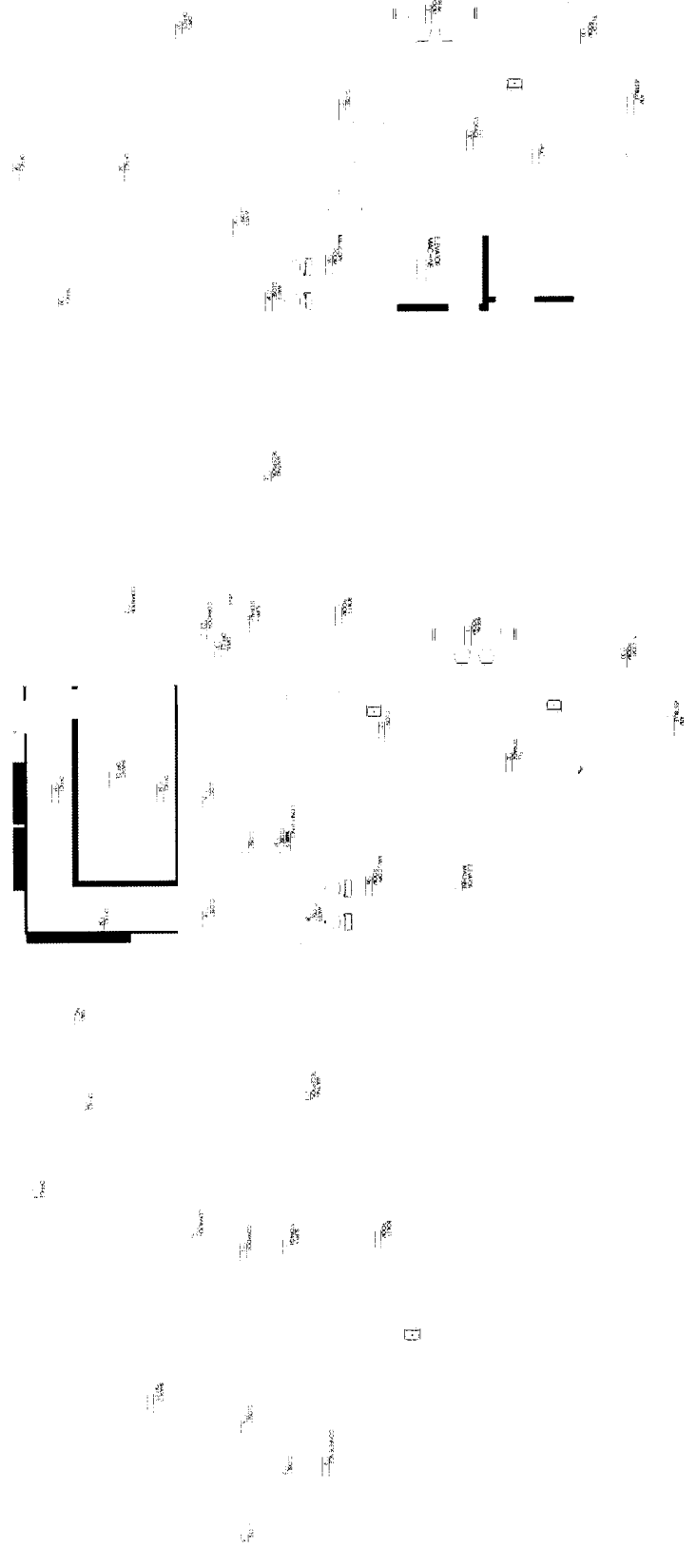
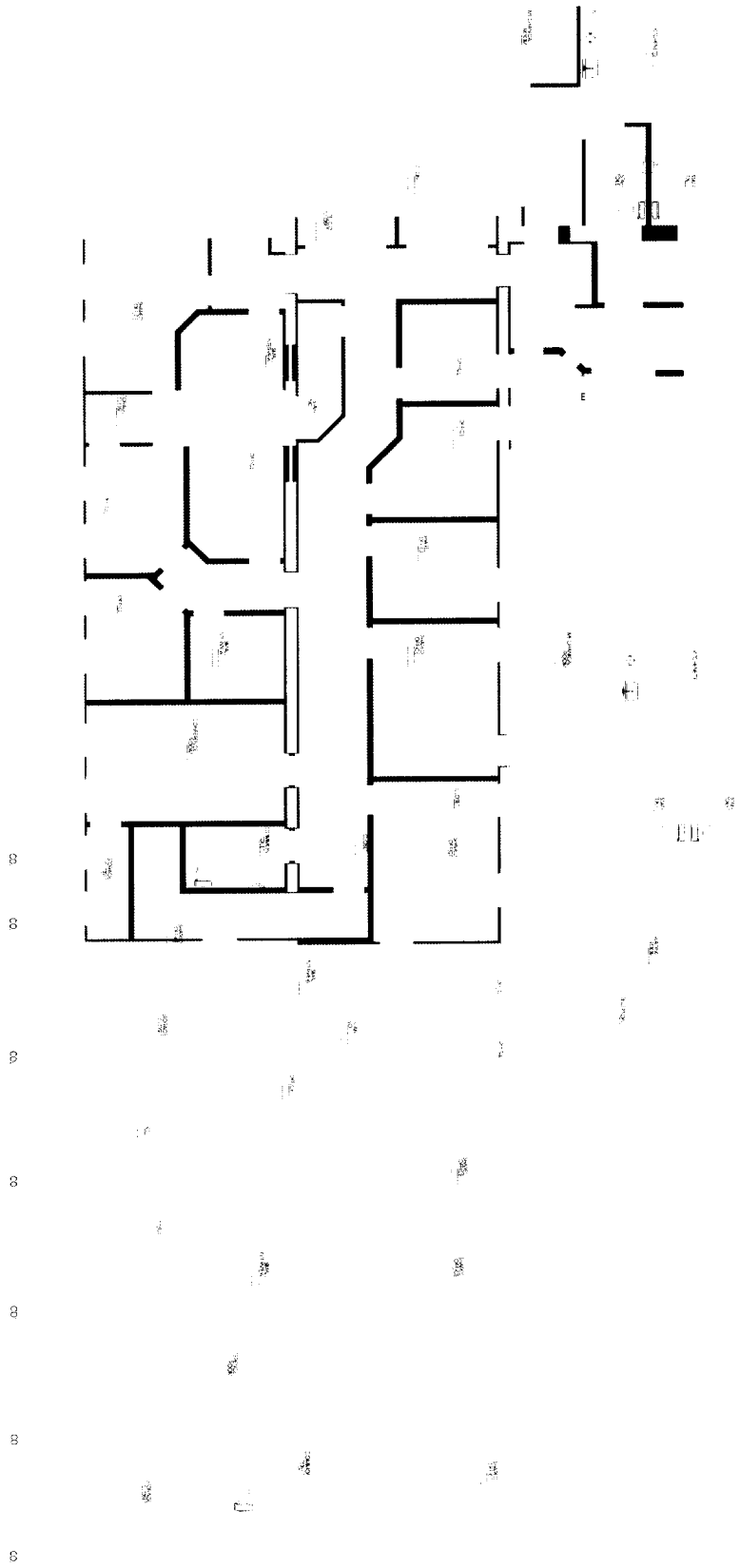
N/F
DOMINIC
REALI

EXISTING 2 STORY
BUILDING

ST. JOHN STREET



PROPOSED CONDITIONS



```
ERROR: rangecheck
OFFENDING COMMAND: setdash
STACK:
0
10 0 ]
```