

Previously classified as F-2, this will now be a Change of Use permit and will require a Certificate of Occupancy. Please provide IEBC-2009 code analysis for Chapter 9.

Please show square foot areas for each type of use and the floor area allowance used in the occupant calculations (refer to IBC Section 1004).

Re-calculation of occupant load in "Meeting Space" room on second floor would appear to increase the total occupant load to over 50, which will affect your required number of exits and stair way widths.

Footprint First Floor- 2,570 S.F.
Footprint Second Floor- 1,988 S.F.
Construction Type- 2B
Unsprinkled
Building Use- F-1

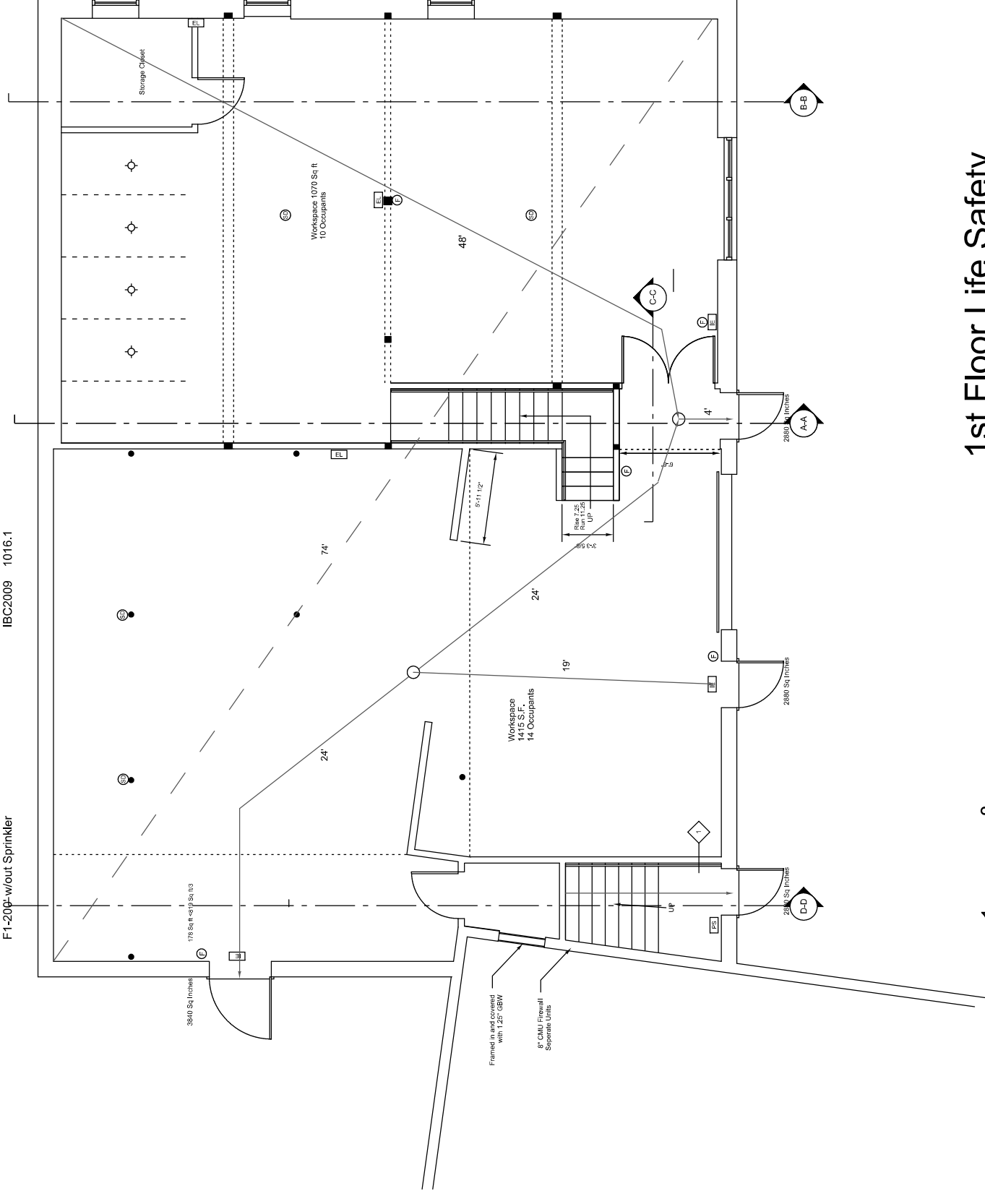
IBC2009 1004.1.1
Occupancy Load-
14+10=24
4+1+1+1+2+2+3=14
14+24=38 Occupants

Building Height- 18'<55'
Stories- 2<3
Allowable Area- 4,569<23,00
IBC 2009 503

Means of Egress- Common Path <50' w/out Sprinkler
NFPA 101-2009 table A7.6
NFPA 101-2009 table A7.6

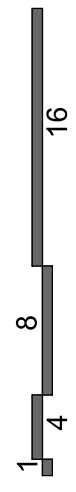
Exit Separation > or= 1/2 Diagonal
Exit Access Travel Distance
F1-20ft w/out Sprinkler
IBC2009 1015.1
IBC2009 1016.1

SYMBOL KEY	
(SD)	Smoke Detector
(HS)	Horn Strobe
(PS)	Pull Station
(E)	Fire Extinguisher
(E-IL)	Illuminated Exit Sign
(E-EL)	Emergency Light Fixture



1st Floor Life Safety

SCALE: 1/4" = 1'-0"



Maker Design+Build
23 Pitt Street
Portland Maine 04103

Open Bench Project
971 Congress Street
Portland Maine 04103

1st Floor Life Safety
11/8/17
1/4"=1'-0"

F101