

Footprint First Floor- 2,570 S.F.
 Footprint Second Floor- 1,988 S.F.
 Construction Type- 2B
 Unsprinkled
 Building Use- F-1

Occupancy Load-
 14+10=24
 4+1+1+1+2+2+3=14
 14+24=38 Occupants

IBC2009 1004.1.1

Building Height- 18'<55'
 Stories- 2<3
 Allowable Area- 4,569<23,00

IBC 2009 503

Means of Egress- Common Path <50' w/out Sprinkler
 Means of Egress- Total Travel Distance <200' w/out Sprinkler

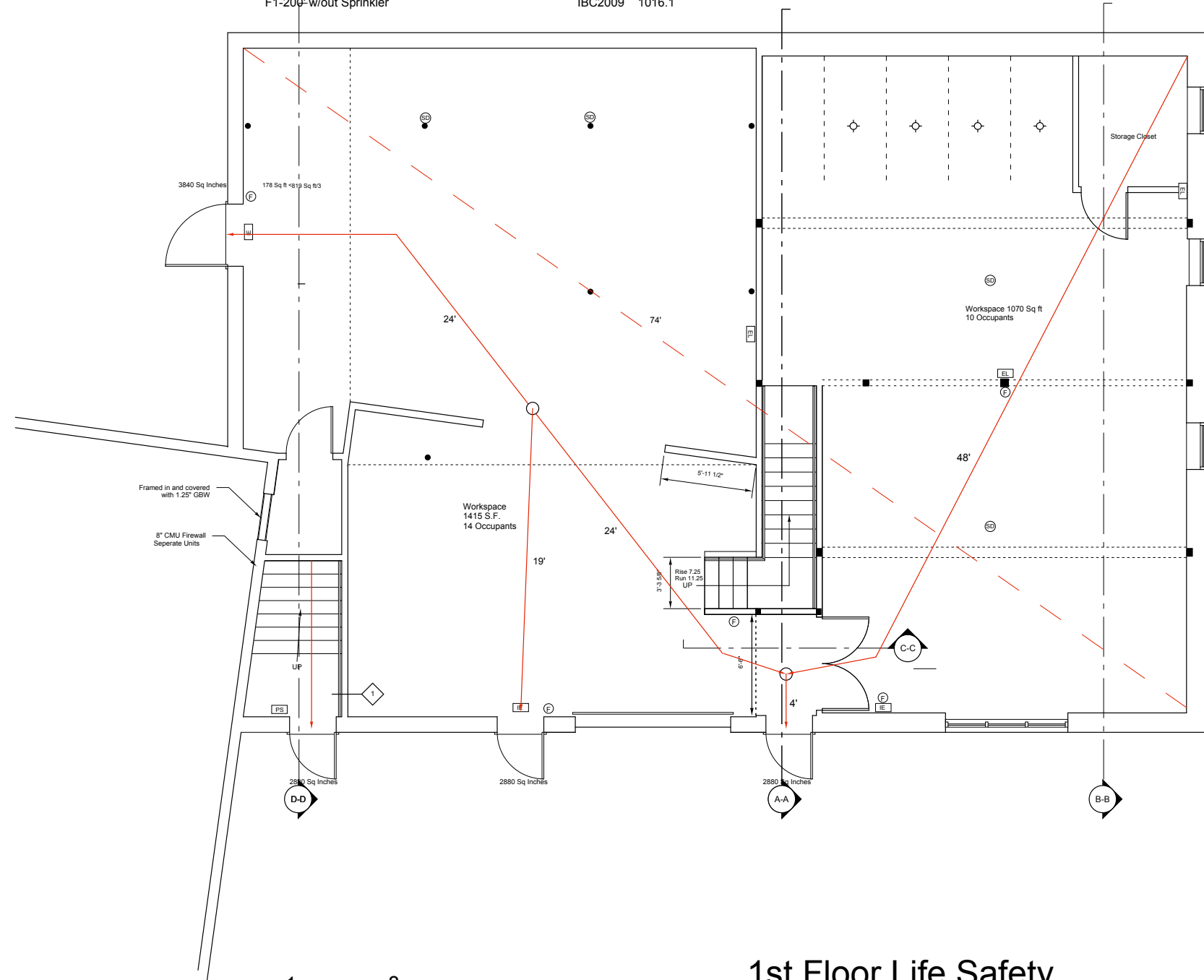
NFPA 101-2009 table A7.6
 NFPA 101-2009 table A7.6

Exit Separation > or= 1/2 Diagonal
 Exit Access Travel Distance
 F1-200' w/out Sprinkler

IBC2009 1015.1

IBC2009 1016.1

| SYMBOL KEY | |
|------------|-------------------------|
| | Smoke Detector |
| | Horn Strobe |
| | Pull Station |
| | Fire Extinguisher |
| | Illuminated Exit Sign |
| | Emergency Light Fixture |



1st Floor Life Safety
 SCALE: 1/4" = 1'-0"

Maker Design+Build
 23 Pitt Street
 Portland Maine 04103

Open Bench Project
 971 Congress Street
 Portland Maine 04103

1st Floor Life Safety
 1/4" = 1'-0"
 11/8/17

F101