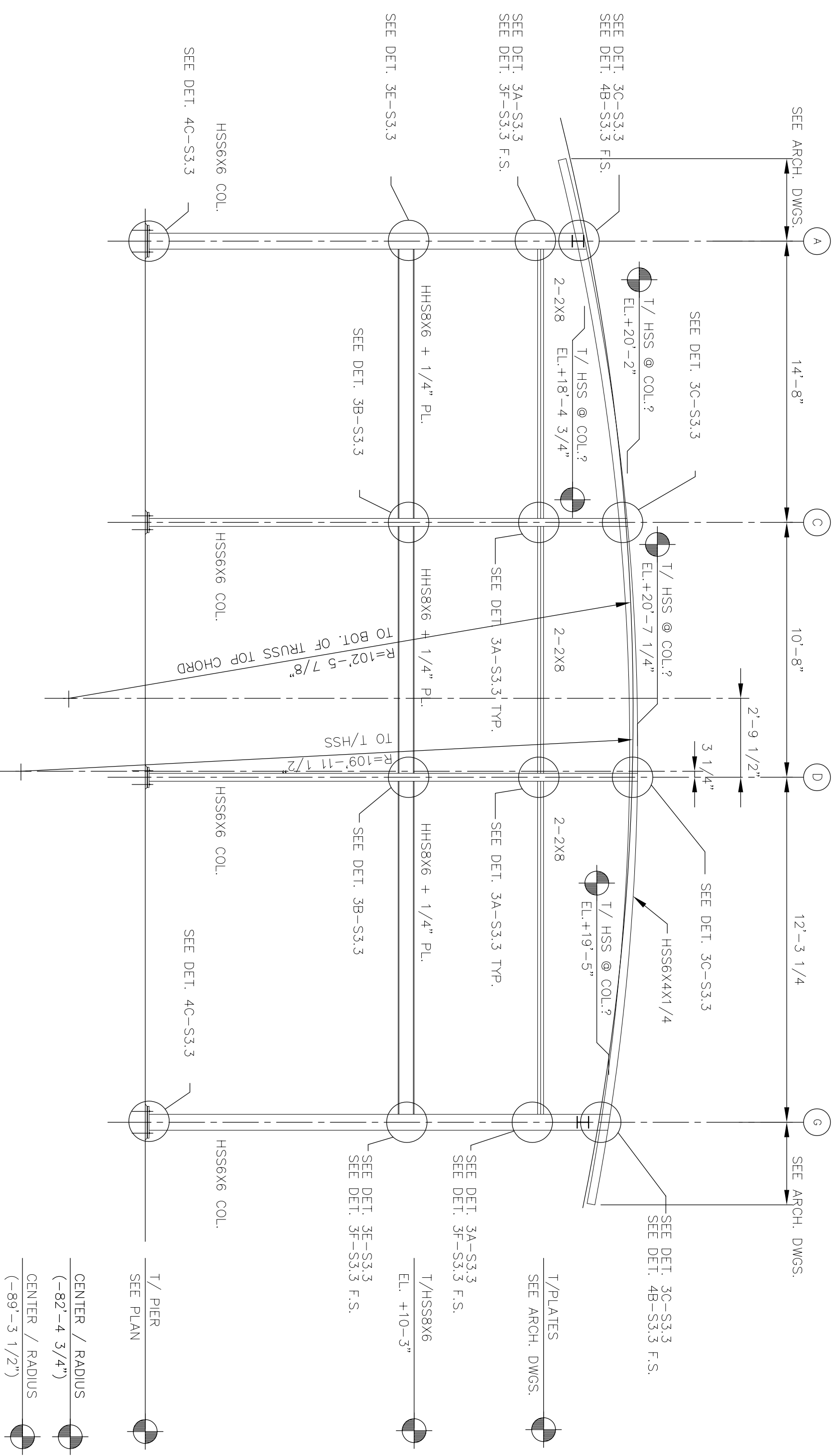
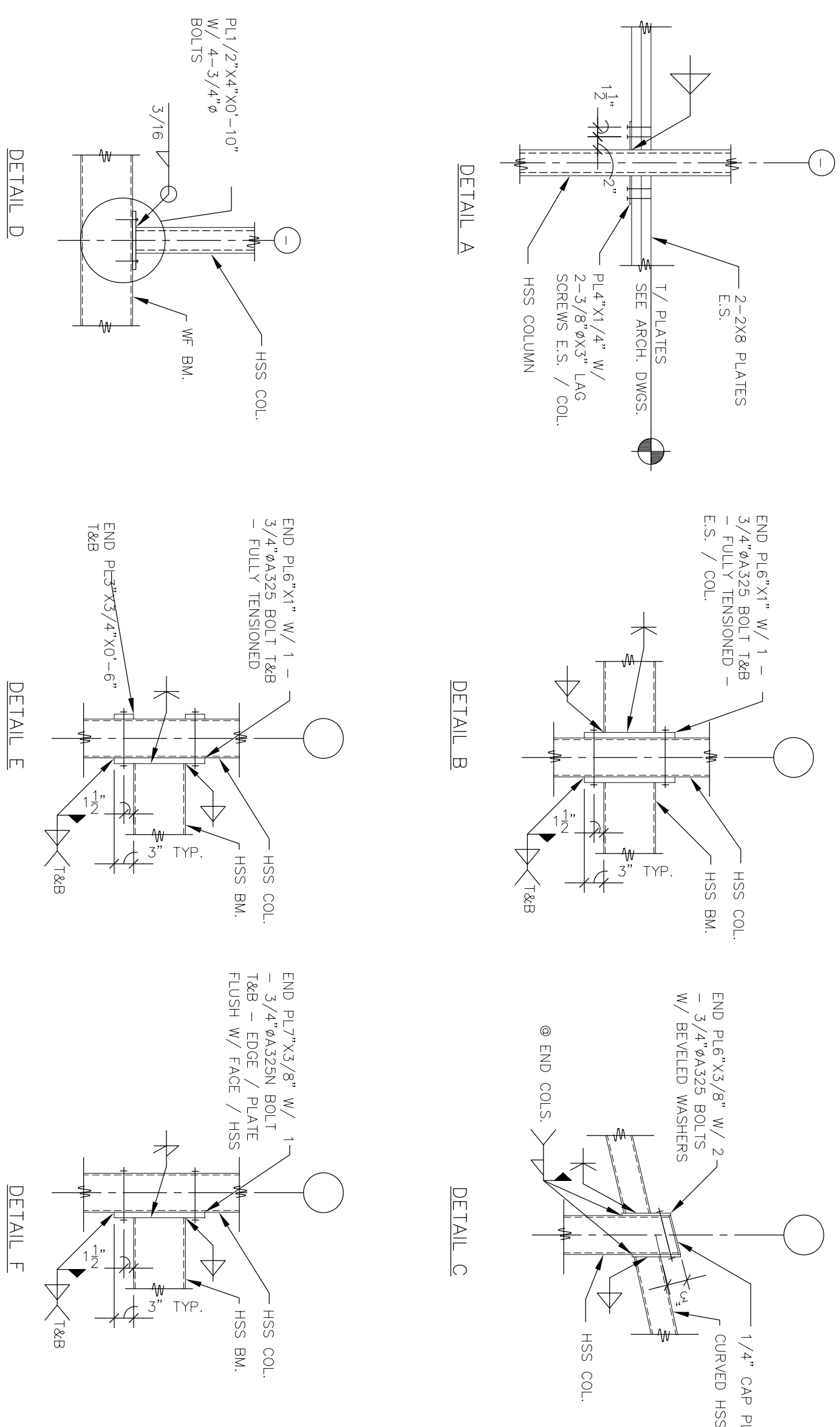


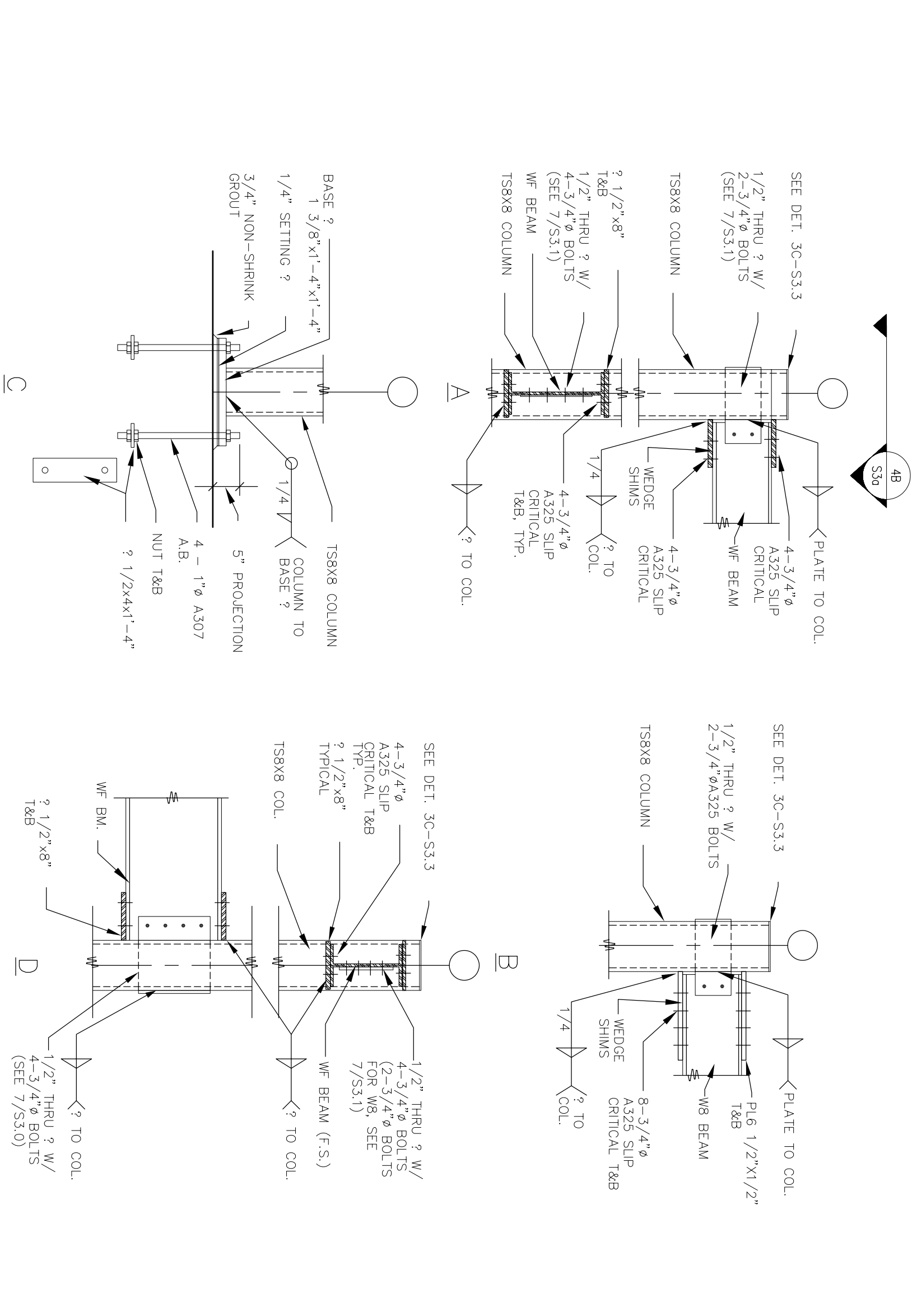
1 ELEVATION
NOT TO SCALE



2 ELEVATION
NOT TO SCALE



3 DETAILS
3/4" = 1'-0"



4 SECTION
3/4" = 1'-0"

REVISIONS		
NO.	DATE	BY
1		
2		
3		
4		
5		
6		
7		

Landry ARCHITECTS
389 Main Street - Salem, NH 03079
T 603.890.6414 F 603.894.4358

DRAWN BY: T.E.A. DATE ISSUED: 08/14/07
CHECKED BY: D.A.D. SCALE: AS NOTED
DATE DRAWN: 06/01/07 JOB NUMBER: M-1035

CONSULTANT:
DUBOIS ENGINEERING ASSOCIATES, INC.
CONSULTING ENGINEERS, STRUCTURAL, FORENSIC
117 HARRISON STREET, MANCHESTER, NH 03104
PH: (603) 666-0900 FAX: (603) 669-0900

SHEET TITLE:
SECTIONS AND DETAILS

RESTAURANT LOCATION:
332 St. John Street
PORTLAND, ME

PREPARED FOR:
McDonald's USA, LLC
McDONALD'S PLAZA
OAK BROOK, ILLINOIS
60521

SHEET NUMBER:
S-3.3