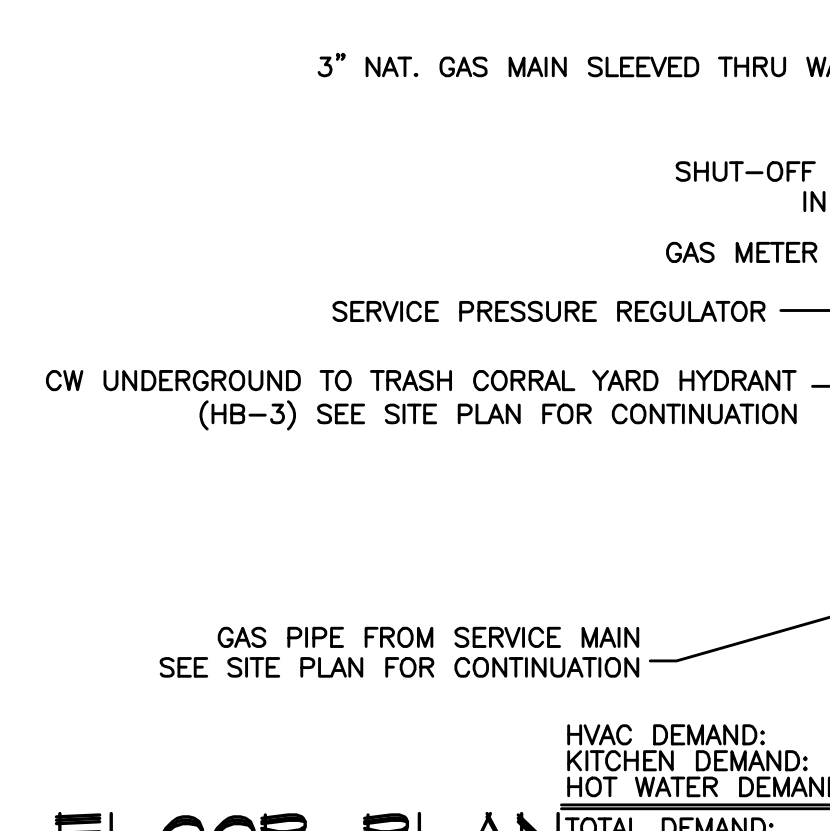
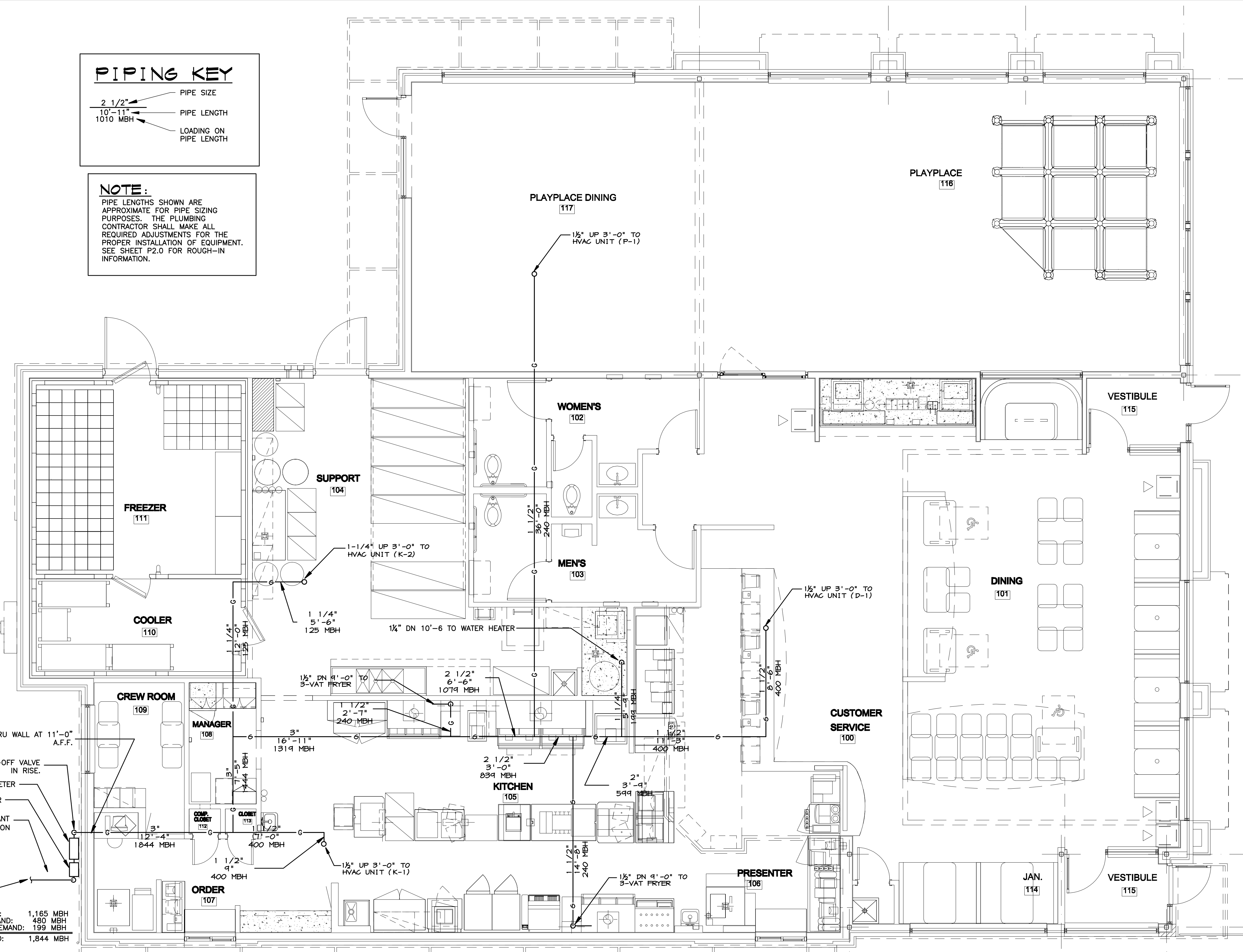
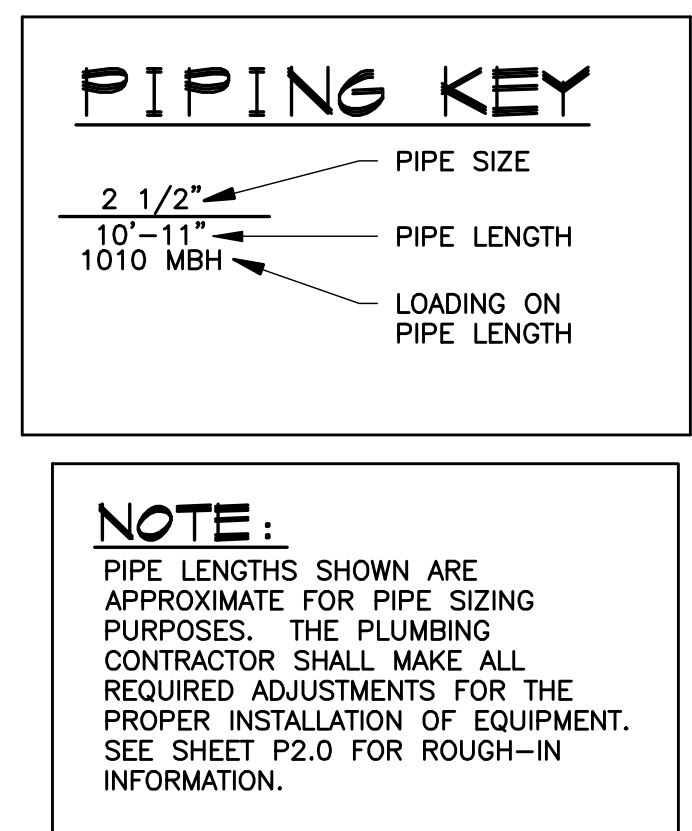


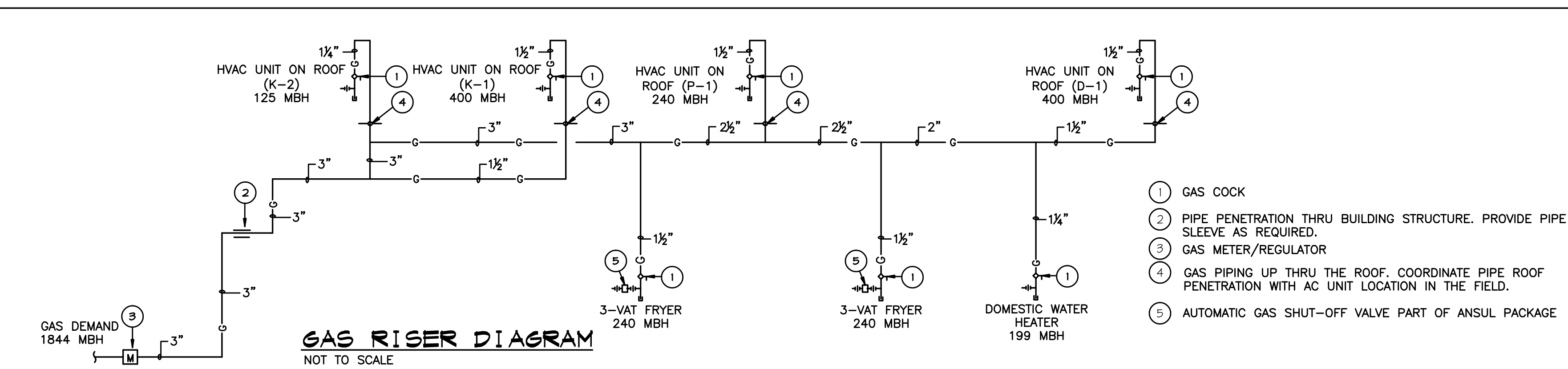
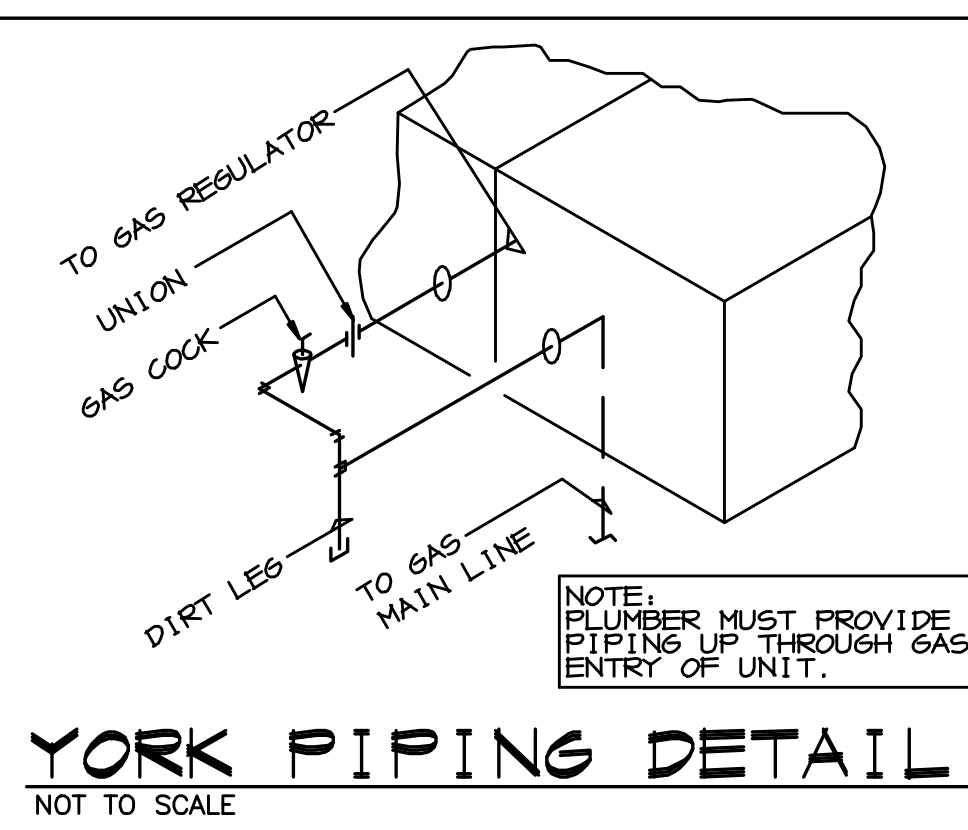
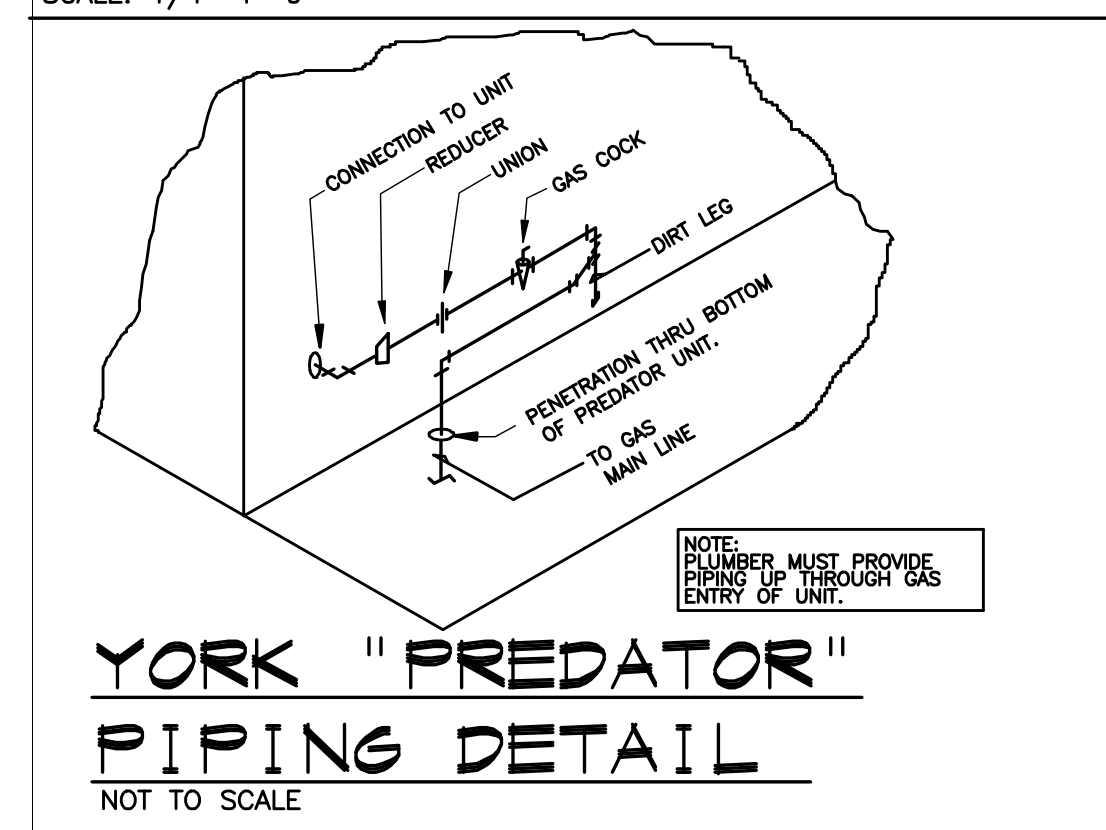
GENERAL NOTES:

- THIS SYSTEM IS DESIGNED FOR A MIN. GAS PRESSURE OF 6" WATER COLUMN AND A MAX. GAS PRESSURE OF 10.5" WATER COLUMN ON THE BUILDING SIDE OF THE METER. THE PRESSURE DROP FROM THE METER TO ANY APPLIANCE SHOULD NOT EXCEED 0.3" WATER COLUMN.
- THE PLUMBING CONTRACTOR SHALL MEASURE AND VERIFY THE FOLLOWING CORRECT GAS PRESSURE AT EACH COOKING APPLIANCE AND HVAC UNIT WHEN ALL APPLIANCES AND HVAC UNITS ARE FIRING:
 GRILL - 5" W.C. NATURAL, 10" W.C. L.P.
 FRYER - 3 1/2" W.C. NATURAL, 8 1/4" W.C. L.P.
 WATER HEATER - 5" W.C. NATURAL, 11" W.C. L.P.
 HVAC UNIT - 5" W.C. NATURAL, 11" W.C. L.P.
 IF A PRESSURE LOWER THAN THESE MINIMUMS IS MEASURED, IT IS TO BE IMMEDIATELY REPORTED TO THE MCDONALD'S PROJECT MANAGER.
- GAS WATER HEATER FLUE MUST BE 10'-0" (MIN.) AWAY FROM ALL FRESH AIR INTAKES.
- ALL GAS LINES FOR KITCHEN EQUIPMENT WILL TERMINATE ABOVE CEILING UNTIL AFTER THE EQUIPMENT IS INSTALLED THEN EXTENDED DOWN FOR FINAL CONNECTION.
- CONTRACTOR TO PROVIDE DIRT & CONDENSATE DRIP LEGS IN GAS PIPING AT HVAC UNITS AND COOKING APPLIANCES.
- NO GAS PIPING SHALL PENETRATE ANY FIRE CHASE, HVAC PLENUM OR DUCT WORK.
- WATER HEATER FLUE AND INTAKE TO BE FURNISHED AND INSTALLED BY THE PLUMBING CONTRACTOR. BOTH TO BE 4" IN SIZE AND CONSTRUCTED OF CPVC PIPE. REFER TO DRAWING M-1.0 AND M-2.0 FOR LOCATION AND ROUTING OF FLUE AND INTAKE.
- PLUMBING CONTRACTOR SHALL INSTALL HVAC UNIT CONDENSATE DRAINS (PROVIDED BY HVAC) AND FURNISH & INSTALL ALL GAS PIPING INCLUDING FINAL CONNECTIONS.
- DO NOT PRESSURE CHECK GAS LINES WHEN HOOKED UP TO COOKING EQUIPMENT OR HVAC UNITS. EXCESSIVE PRESSURE WILL DAMAGE GAS VALVES, PRESSURE REGULATORS AND MANUAL SHUTOFF VALVES. FINAL LEAK TESTING FROM SHUTOFF TO EQUIPMENT TO BE DONE UNDER NORMAL PRESSURE WITH SOAP/WATER SOLUTION AFTER GAS PIPING IS CONNECTED.
- ALL GAS PIPE SIZES AND FLOW CALCULATIONS ARE BASED UPON A NATURAL GAS QUALITY OF 1000 BTU PER CUBIC FT. OF GAS DELIVERED. PIPE SIZES AND FLOW CALCULATIONS MAY HAVE TO BE REVISED IF QUALITY VARIES SIGNIFICANTLY FROM THIS VALUE.
- ALL GAS PIPING SHALL BE SCHEDULE 40 BLACK STEEL PIPE AND MALLEABLE IRON FITTINGS.



HVAC DEMAND: 1,165 MBH
 KITCHEN DEMAND: 480 MBH
 HOT WATER DEMAND: 199 MBH
TOTAL DEMAND: 1,844 MBH

GAS PIPING FLOOR PLAN
 SCALE: 1/4"=1'-0"



NO.	DATE	BY
1		
2		
3		
4		
5		
6		
7		

Landry ARCHITECTS
 3000 BROADWAY, SUITE 200
 PORTLAND, ME 04103
 TEL: 603.633.0041 FAX: 603.633.0050

DATE BRLEED: 08/14/07
 J.L.G. J.E.Z. SCALE: AS NOTED
 DRAWN BY: 08/14/07
 CHECKED BY: DATE DRAWN: 08/14/07

CONSULTANT:
Griffith & Vary, Inc.
 12 Keadock Rd. Warrum, MA 02871
 Telephone: 603-285-0060
 Fax: 603-285-0068

RESTAURANT LOCATOR:
GAS PIPING PLANS AND DETAILS
McDonald's

PREPARED FOR:
McDonald's USA, LLC
 MCDONALD'S PLAZA
 OAK BROOK, ILLINOIS 60521

RESTAURANT LOCATOR:
 332 St. John Street
PORTLAND, ME

PROJECT NUMBER:
P4.0