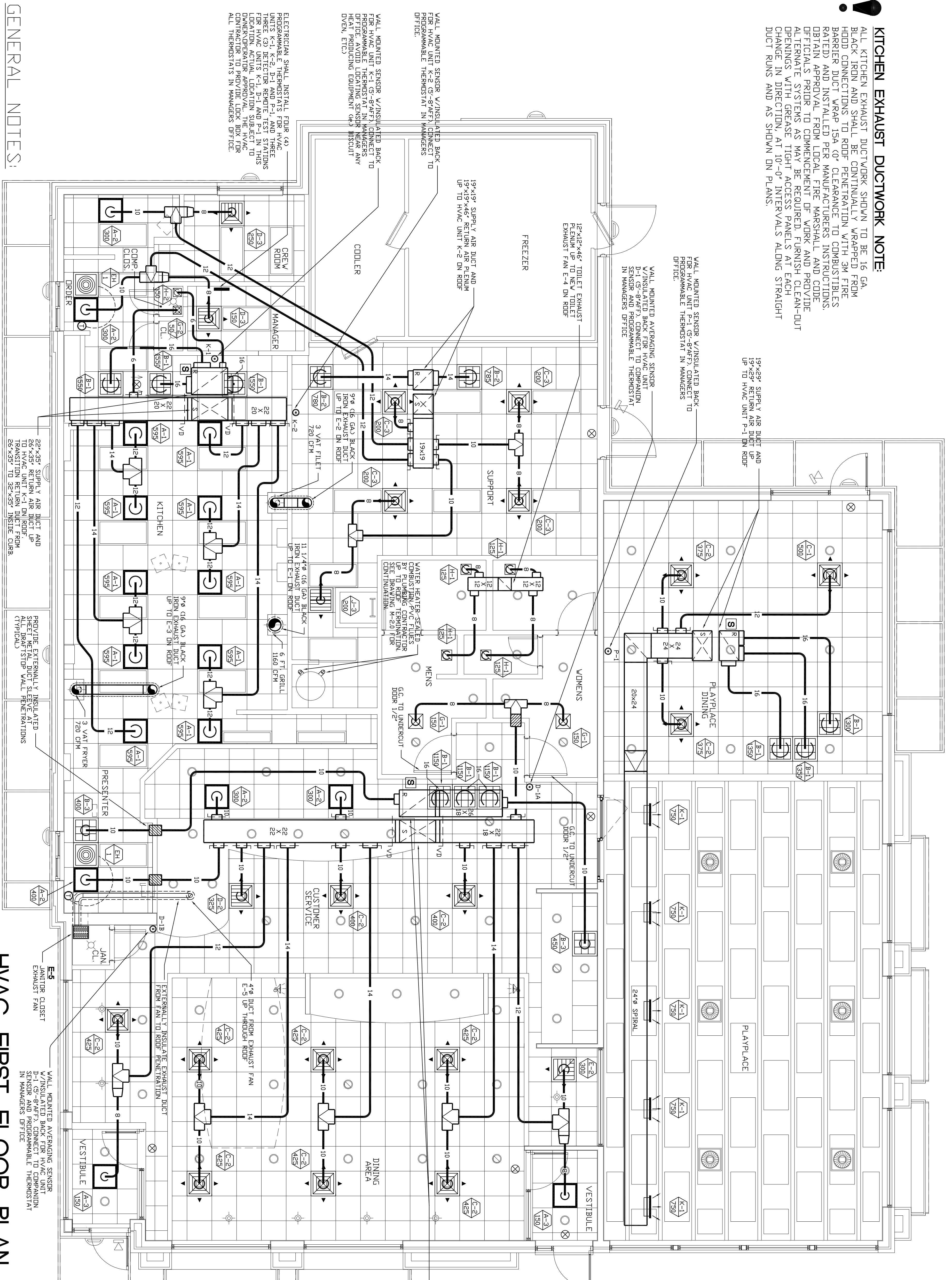


KITCHEN EXHAUST DUCTWORK NOTE:

ALL KITCHEN EXHAUST DUCTWORK SHOWN TO BE 16 GA. BLACK IRON AND SHALL BE CONTINUALLY WRAPPED FROM HOOD CONNECTIONS TO ROOF PENETRATION WITH 3M FIRE BARRIER DUCT WRAP 154-07 CLEARANCE TO COMBUSTIBLES (RATED) AND INSTALLED PER MANUFACTURERS INSTRUCTIONS. OBTAIN APPROVAL FROM LOCAL FIRE MARSHALL AND CODE OFFICIALS PRIOR TO COMMENCEMENT OF WORK AND PROVIDE ALTERATE SYSTEMS AS MAY BE REQUIRED. FINISH CLEAN-OUT OPENINGS WITH GREASE TIGHT ACCESS PANELS AT EACH CHANGE IN DIRECTION AT 10'-0" INTERVALS ALONG STRAIGHT DUCT RUNS AND AS SHOWN ON PLANS.



GENERAL NOTES:

1. ALL HVAC EQUIPMENT, FLEXIBLE DUCTWORK, CONTROLS, AND DUCTWORK SHALL BE INSTALLED IN ACCORDANCE WITH THE SYSTEM SPECIFICATIONS AND SUBSTITUTIONS ARE PERMITTED. CONTACT THE MEDONA D'S PROJECT MANAGER FOR THESE SPECIFICATIONS.
2. THE REQUIRED HVAC COMPONENTS SHOULD BE PURCHASED AND SUPPLIED BY MEDONA D'S OR PURCHASED BY THE GENERAL CONTRACTOR FROM A MEDONA D'S APPROVED NATIONAL SUPPLIER. CONTRACTOR SHALL BE RESPONSIBLE FOR OBTAINING ALL NECESSARY PERMITS AND APPROVALS FROM THE PROJECT MANAGER. THE COMPONENTS ARE AS LISTED.
3. HONEYWELL REMOTE TEMPERATURE SENSORS, THERMOSTATS, SUB-BASES, SENSORS, AND WOODEN MOUNTING BLOCKS, MODEL NUMBER AND MATERIALS FOR THESE ITEMS ARE SHOWN ON SHEET ABOVE. SEE NOTE 11 ON SHEET M-2.0 FOR REQUIRED COORDINATION WITH ELECTRICAL CONTRACTOR AND PROJECT MANAGER.
4. THE MECHANICAL CONTRACTOR SHALL INSTALL WEB HANGERS OR SUPPORT FLEXIBLE DUCTWORK WHERE IT PASSES THROUGH DOOR TRUSSES AND JOISTS.
5. ALL KITCHEN HOOD EXHAUST DUCTWORK SHALL BE EXTERNALLY INSULATED WITH 1" MINIMUM INSULATION. INSULATION THICKNESS AND LABELS FOR GREASE DUCT APPLICATIONS, INSULATION JURISDICTION (AHD), SEE THE EXHAUST FAN, DUCT AND HOOD DETAIL ON DRAWING M-3.0.
6. REFER TO ARCH. DRAWINGS FOR SUSPENDED CEILING DIMENSIONING.
7. THE DUCT DIMENSIONS SHOWN ON THE DRAWINGS ARE CLEAR, INSIDE DIMENSIONS AND DO NOT TAKE EXTERNAL INSULATION INTO ACCOUNT.
8. ALL FLEX DUCT SHALL BE LISTED IN ACCORDANCE WITH UL STANDARD INTEGRAL VAPOR BARRIER.
9. ALL DUCT BOPERS FROM HVAC UNITS SHALL BE OFFSET AS NECESSARY TO CLEAR FLOOR STRIPS AND CEILING APPLICATION OR EXTERNAL DUCT INSULATION.
10. ALL DUCTWORK JOINTS, UNCTIONAL AND TRANSVERSE SEAMS AND END CONNECTIONS SHALL BE SEALED WITH UL LISTED GASKETS, MASTIC-PLUS EMBEDDED FABRIC SYSTEMS OR TAPES. ALL TAPES AND MASTICS SHALL BE LISTED AND LABELED IN ACCORDANCE WITH UL 1824 OR UL 1818.

HVAC FIRST FLOOR PLAN

SCALE: 1/4" = 1'-0"

DRAWING NOTES:

1. SEE THIS DRAWING FOR GENERAL MECHANICAL NOTE.
2. SEE DRAWING M-3.0 AND M-3.1 FOR MECHANICAL EQUIPMENT SCHEDULES AND DETAILS.
3. SEE DRAWING M-3.1 FOR MECHANICAL LEGEND.
4. SEE DRAWING M-2.0 FOR COORDINATION NOTES FOR ALL HVAC SYSTEM REQUIREMENTS.

DUCTWORK SYMBOLS

- NEW DUCTWORK
- SUPPLY DUCTWORK
- RETURN DUCTWORK
- FIRE DAMPER AND ACCESS DOOR
- DUCT MOUNTED SMOKE DETECTOR

RESTAURANT LOCATION: 332 St John Street PORTLAND, ME	SHEET TITLE: HVAC FIRST FLOOR PLAN	CONSULTANT: M.J. MARCHIA, INC. AIR CONDITIONING SYSTEMS 6 WASHINGTON AVE., BAY SHORE, NY 11706 (813) 586-8500 • (813) 586-8577 fax	REVISIONS		
			PREPARED FOR: McDONALD'S PLAZA OAK BROOK, ILLINOIS 60521	DRAWN BY: P.S. CHECKED BY: M.J.M. DATE DRAWN: 08/10/07	DATE ISSUED: 08/14/07 SCALE: AS NOTED JOB NUMBER: M-1032