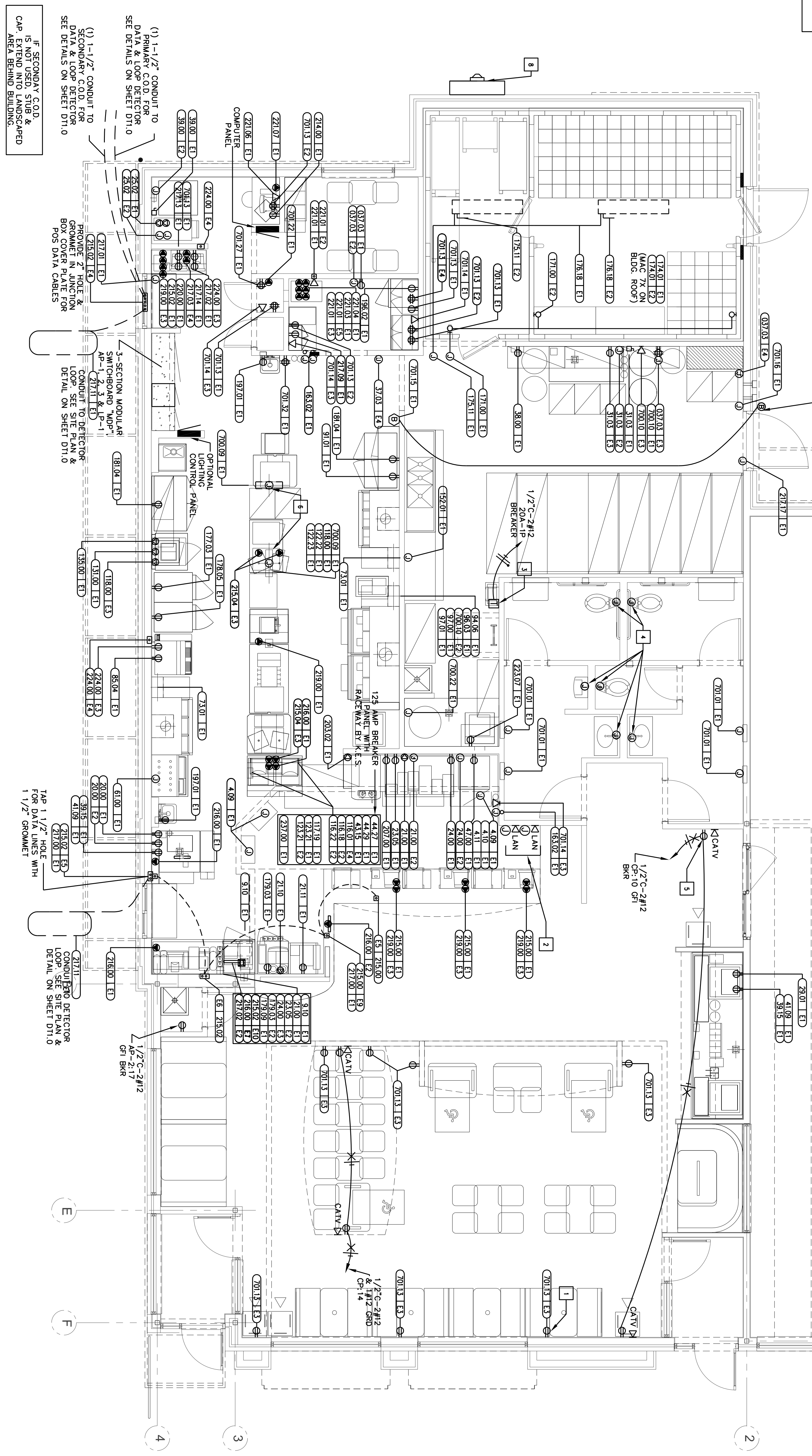


TRASH CORRAL POWER:  
 1/2" C-2#12 & 1/2" C-2#10 GND TO 30A-2P  
 25A-5P PANEL  
 AP2-25 FOR TRASH COMPACTOR AND DCO.  
 VERIFY EXACT LOCATION AND ALL  
 REQUIREMENTS OF TRASH CORRAL IN FIELD.

ROUGH-INS SHOWN ARE FOR ADT OR DETEX  
 ALARM SYSTEMS. VERIFY ROUGH-IN AND  
 INSTALLATION REQUIREMENTS WITH SECURITY  
 CONTRACTOR PRIOR TO INSTALLATION.



SYMBOL	DESCRIPTION	SYMBOL	DESCRIPTION
Ⓚ	SINGLE POLE SWITCH, 3W=THREE WAY SWITCH, K=SWITCHED	Ⓚ	BUTTON FOR BUZZER
Ⓚ	TRANSFORMER	Ⓚ	PULL BOX
Ⓚ	JB WITH DUPLEX CONVENIENCE OUTLET (CEILING MOUNTED)	Ⓚ	PANEL BOARD
Ⓚ	JB WITH SINGLE CONVENIENCE OUTLET	Ⓚ	CIRCUIT BREAKER
Ⓚ	JB WITH TAP DUPLEX CONVENIENCE OUTLETS	Ⓚ	J-BOX WITH FINAL EQUIPMENT CONNECTION
Ⓚ	JB WITH FLUSH FLOOR MOUNTED OUTLET	A	AMPERES
Ⓚ	JB WITH SPECIAL PURPOSE OUTLET	ACH	AREA CONSTRUCTION MANAGER
Ⓚ	JB WITH DUPLEX ISOLATED GROUND OUTLET	AF	ABOVE FINISHED FLOOR
Ⓚ	INTERCOM STATION W/ 3/4\" C- TO MAIN STATION	C	CONDUIT
Ⓚ	TELEPHONE JACK	CC	CIRCUIT
Ⓚ	JUNCTION BOX - WALL OR CEILING MOUNTED	EC	ELECTRICAL CONTRACTOR
Ⓚ	NON-FUSED DISCONNECT SWITCH	GC	GENERAL CONTRACTOR
Ⓚ	STUB UP THRU ROOF	GF1/GFCI	GROUND FAULT CIRCUIT INTERRUPTER
Ⓚ	THERMOSTAT SENSOR W/ 1/2\" C- UP TO CEILING SPACE	GRD	GROUND
Ⓚ	MOTOR CONNECTION	IG	ISOLATED GROUND
Ⓚ	CONDUIT RUN CONCEALED IN CEILING OR WALLS	JB	JUNCTION BOX
Ⓚ	CONDUIT RUN IN FLOOR SLAB	KES	KITCHEN EQUIPMENT SUPPLIER
Ⓚ	HOT (SHORT), NEUTRAL (LONG) & X- DENOTES ISOLATED GROUND	MLO	MAIN LUGS ONLY
Ⓚ	BUZZER	VP	WEATHERPROOF

1 ELECTRICAL ROUGH-IN PLAN  
 1/4" = 1'-0"

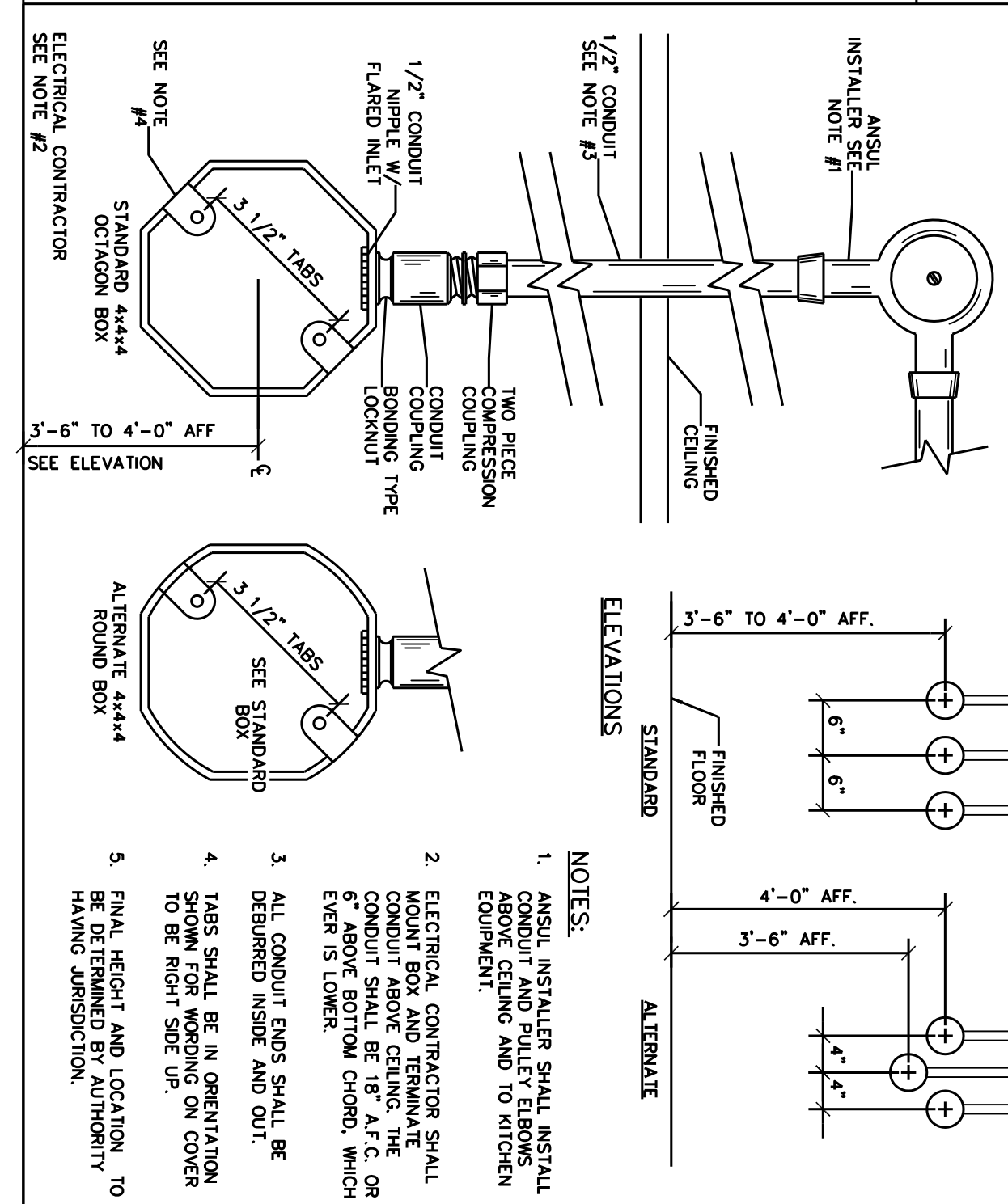
ADT ROUGH-IN NOTES

- COORDINATE EXACT INSTALLATION REQUIREMENTS WITH ADT PRIOR TO INSTALLATION. TEL: 800-417-8238
- PROVIDE A 2 GANG 3-25/32" X 3-25/32" X 3-1/2", JUNCTION BOX AT DOOR FOR INSTALLATION OF DOOR ALARM UNIT, STUB 1/2" C ABOVE CEILING FROM JUNCTION BOX. PROVIDE 1/2" C FROM J-BOX TO DOOR MAGNETIC SWITCH LOCATION.
- PROVIDE 4" X 4" JUNCTION BOX ABOVE CEILING FOR INSTALLATION OF LOW VOLTAGE TRANSFORMER. VERIFY EXACT LOCATION WITH ADT PRIOR TO INSTALLATION. PROVIDE 1/2" C-2#12 TO LOCKOUT TYPE CB IN PANEL UP-1.

- ROUGH-INS FOR AUTOMATIC FLUSH VALVE AND HANDSINKS SENSORS. LOCATE 444-2-1/2" JB, USE AND ORIENT REQUIRED PLASTER RING IN ACCORDANCE WITH MANUFACTURER'S INSTRUCTIONS. 1/2" C-2#18 TO TRANSFORMER FOR REMOTE SENSOR POWER. WIRE REMOTE SENSORS TO SOLENOID VALVES PER MANUFACTURER'S INSTRUCTIONS (4 LOCATIONS) (OWNER/OPERATOR REQUEST)
- SEE NOTE TVI ON SHEET E31.
- ORIENT OGP BOX AND CORO ASSEMBLY SIDEWAYS TO MINIMIZE THE VISIBILITY OF THE CONDS.
- SEE POS ELECTRICAL RISES DIAGRAM ON SHEET E1.0.
- CIR & METER CABINET, COORDINATE LOCATION AND ALL METER CABINET SHALL NOT BE INSTALLED IN D/T.
- PAINT TO MATCH BUILDING COLOR.

- GENERAL NOTES
- SEE SHEET E3.0 FOR PANEL & CIRCUIT BREAKER ASSIGNMENT, VOLT/PH, FLA, BREAKER SIZE, COND/WIRE, RECEPTACLE TYPE, HEIGHT ABOVE FINISHED FLOOR, REQUIREMENTS & REMARKS OF ALL ELECTRICAL EQUIPMENT.
  - TRANSFORMERS FOR AUTOMATIC FLUSH VALVE AND HANDSINKS SENSORS, EC TO VERIFY ALL COMPONENTS NECESSARY FOR A COMPLETE SYSTEM, AND INCLUDE ALL COSTS IN BASE BID. (OWNER/OPERATOR REQUEST)
  - SEE NOTES P1, P2, & P3 ON SHEET E31

REMOTE ANSUL PULL STATION FOR REFERENCE



RESTAURANT LOCATION:  
 1332 US ROUTE 302  
 PORTLAND, ME

PREPARED FOR:  
**McDonald's USA, LLC**  
 McDONALD'S PLAZA  
 OAK BROOK, ILLINOIS  
 60521

SHEET NUMBER:  
**E1.1**

McDonald's

SHEET TITLE:  
 ROUGH-IN PLAN

CONSULTANT:  
**EA**  
 ENGINEERING ADVANTAGE, INC.  
 2 PARK ST.  
 BOSTON, MASSACHUSETTS 02122  
 PHONE: (617) 288-3969  
 FAX: (617) 825-8922

REVISIONS

NO.	DATE	BY
1		
2		
3		
4		
5		
6		
7		

DRAWN BY: CJC  
 CHECKED BY: LAF  
 DATE DRAWN: 04/17/07

DATE ISSUED: 08/14/07  
 SCALE: AS SHOWN  
 JOB NUMBER: M-1035

**Landry ARCHITECTS**  
 389 Main Street - Salem, NH 03079  
 T 603.890.6414 F 603.894.4356

www.landryarchitects.com