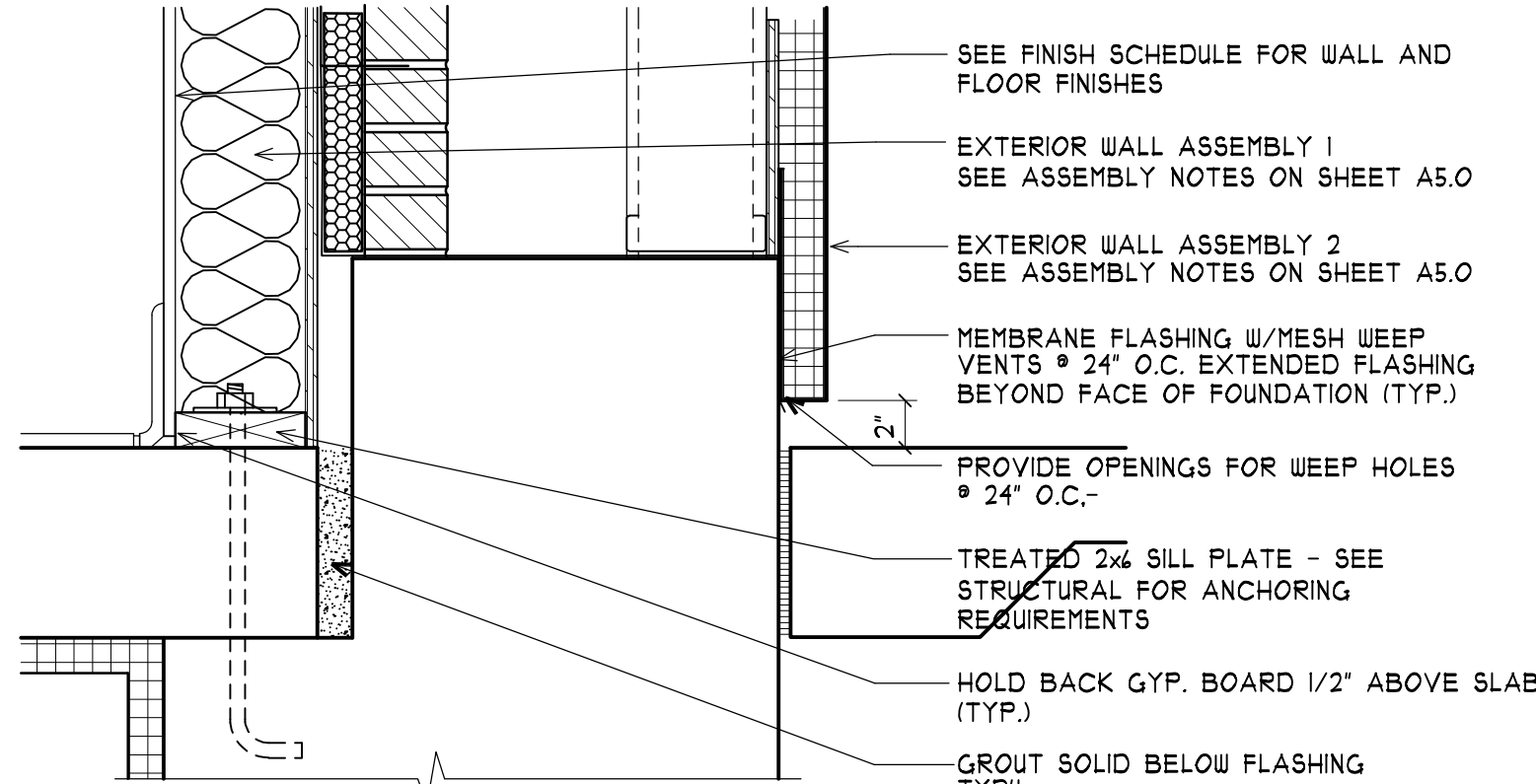
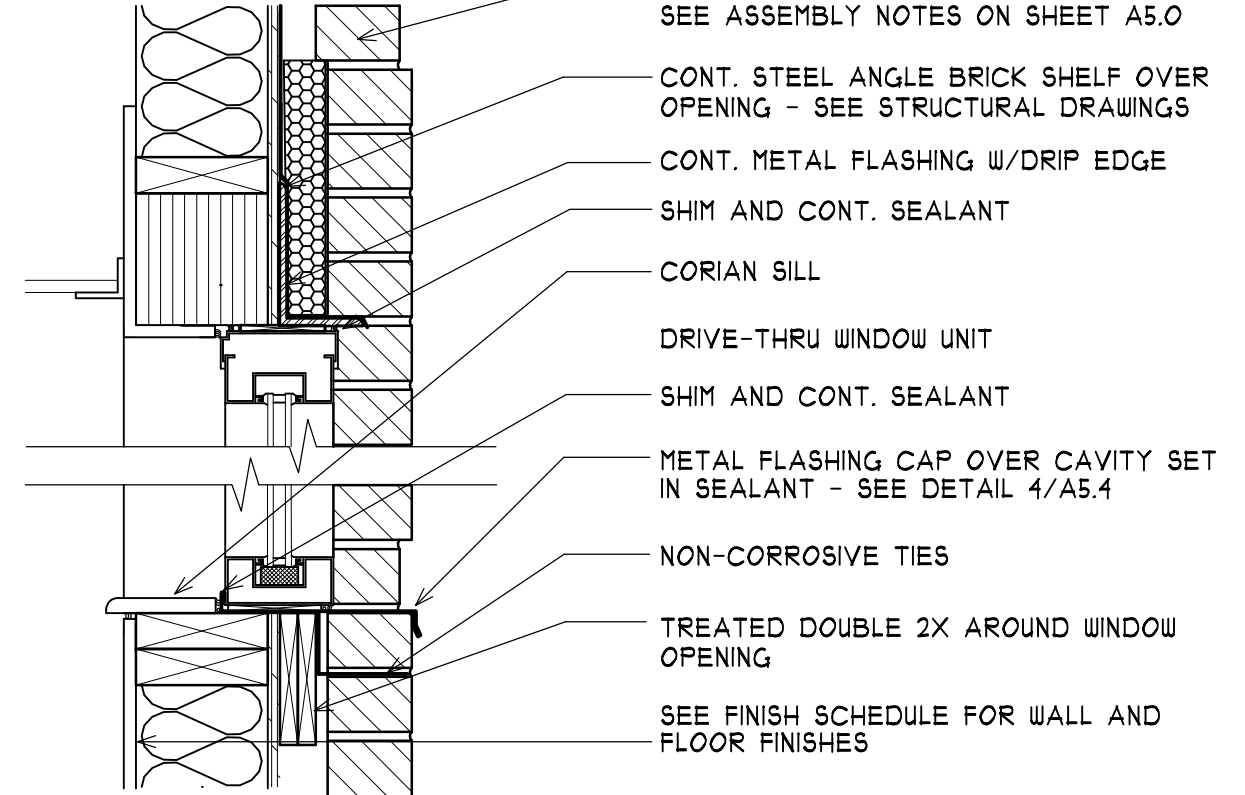


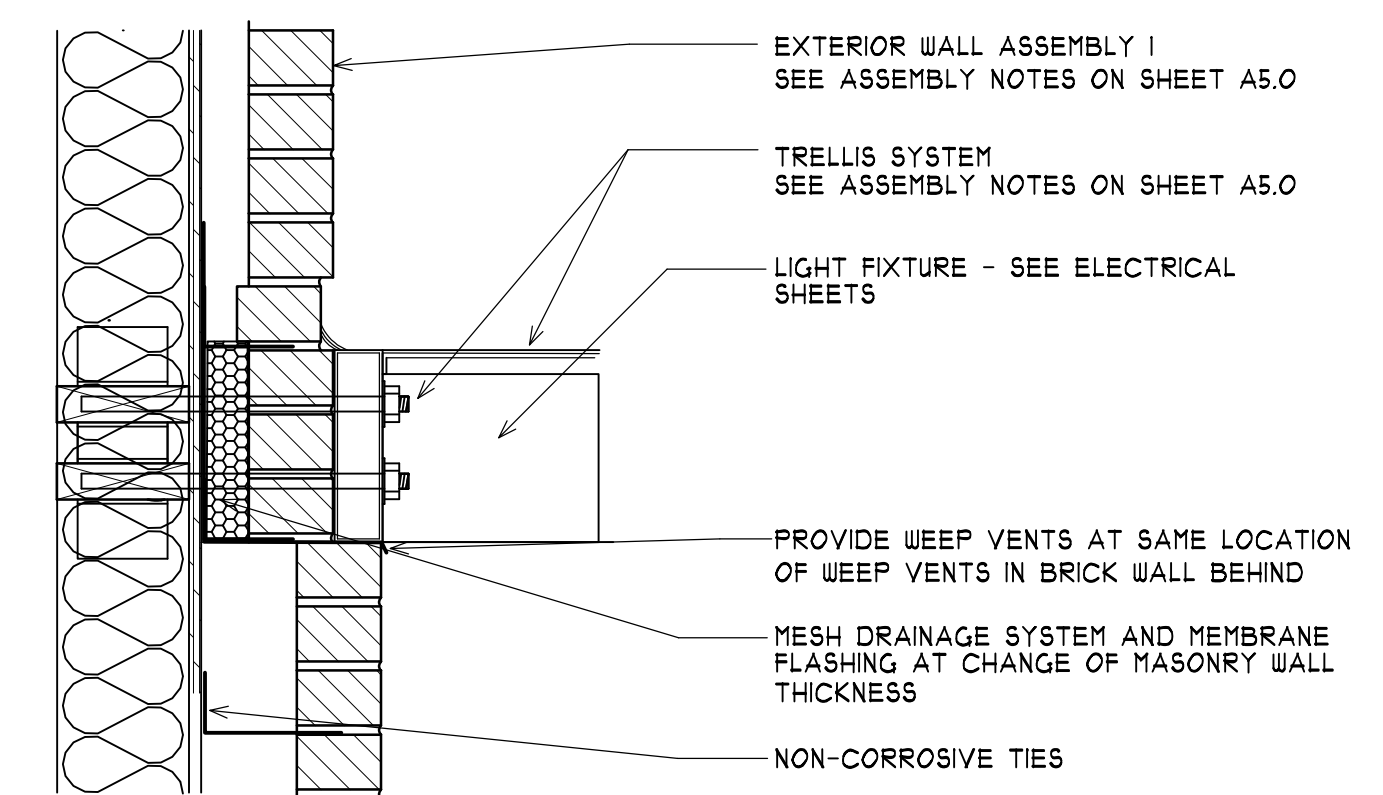
1 DETAIL-ARCADE FLASHING
A-5.3 SCALE: 1 1/2"=1'-0"



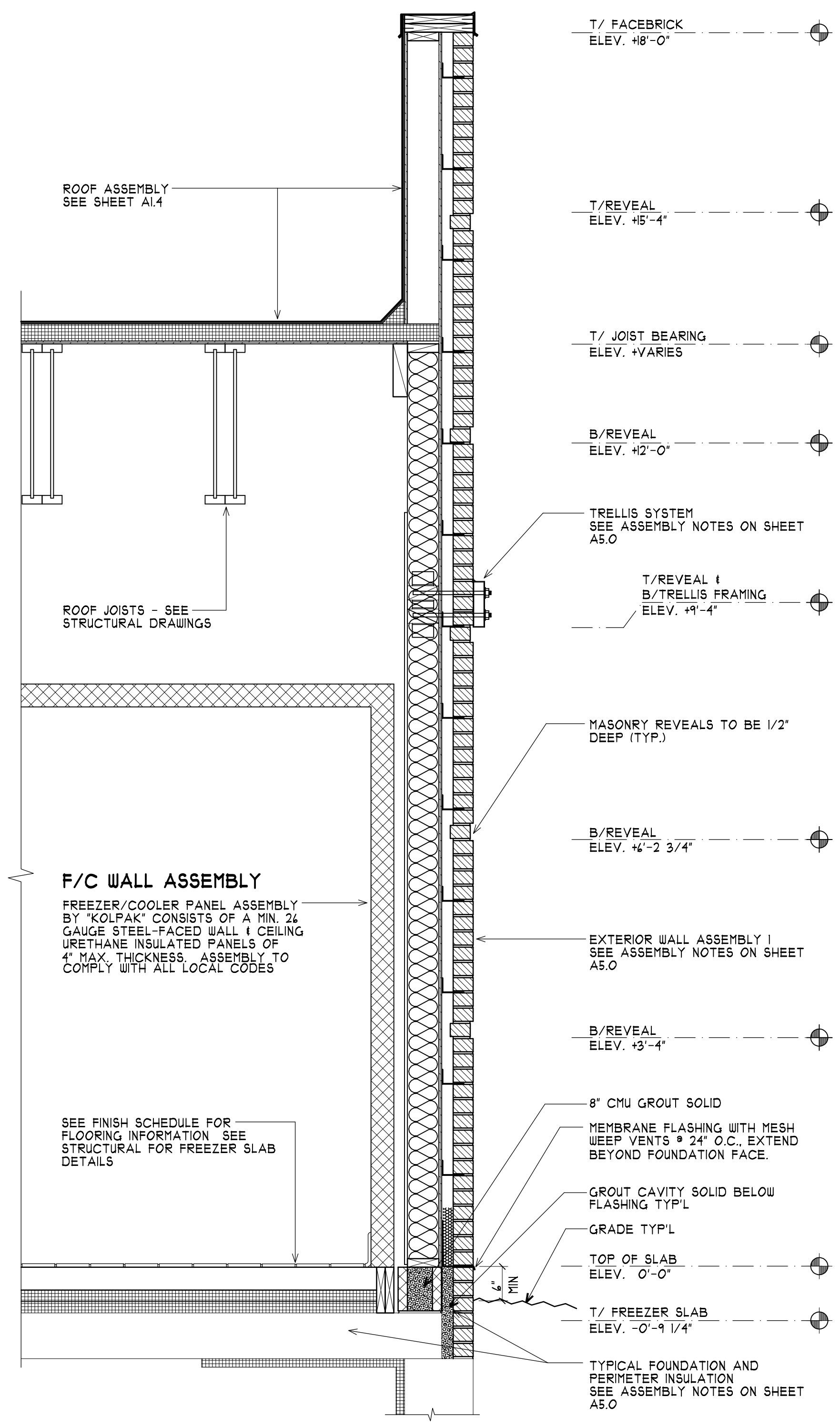
2 DETAIL-ARCADE FOOTING
A-5.3 SCALE: 1 1/2"=1'-0"



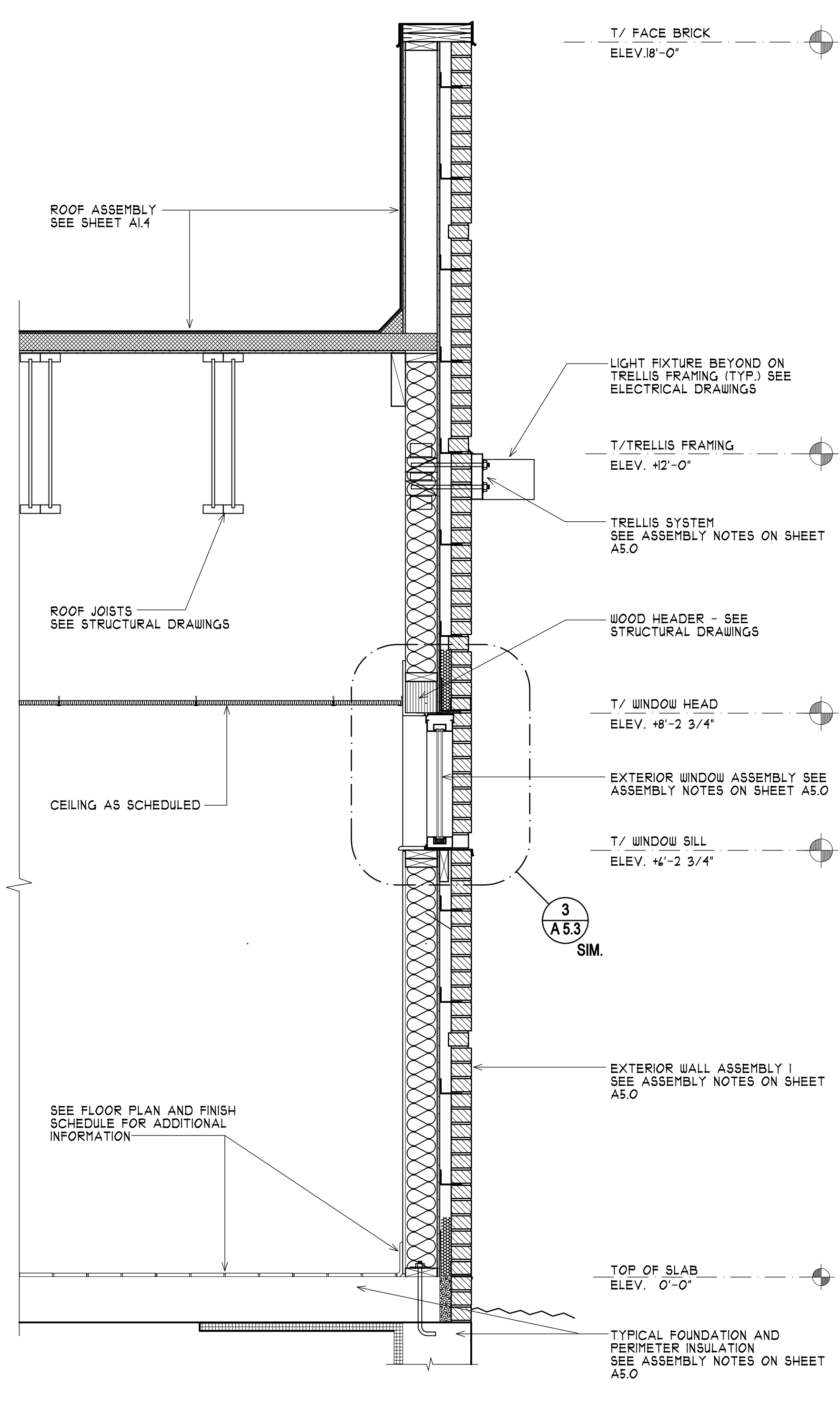
3 DETAIL-DRIVE-THRU WINDOW
A-5.3 SCALE: 1 1/2"=1'-0"



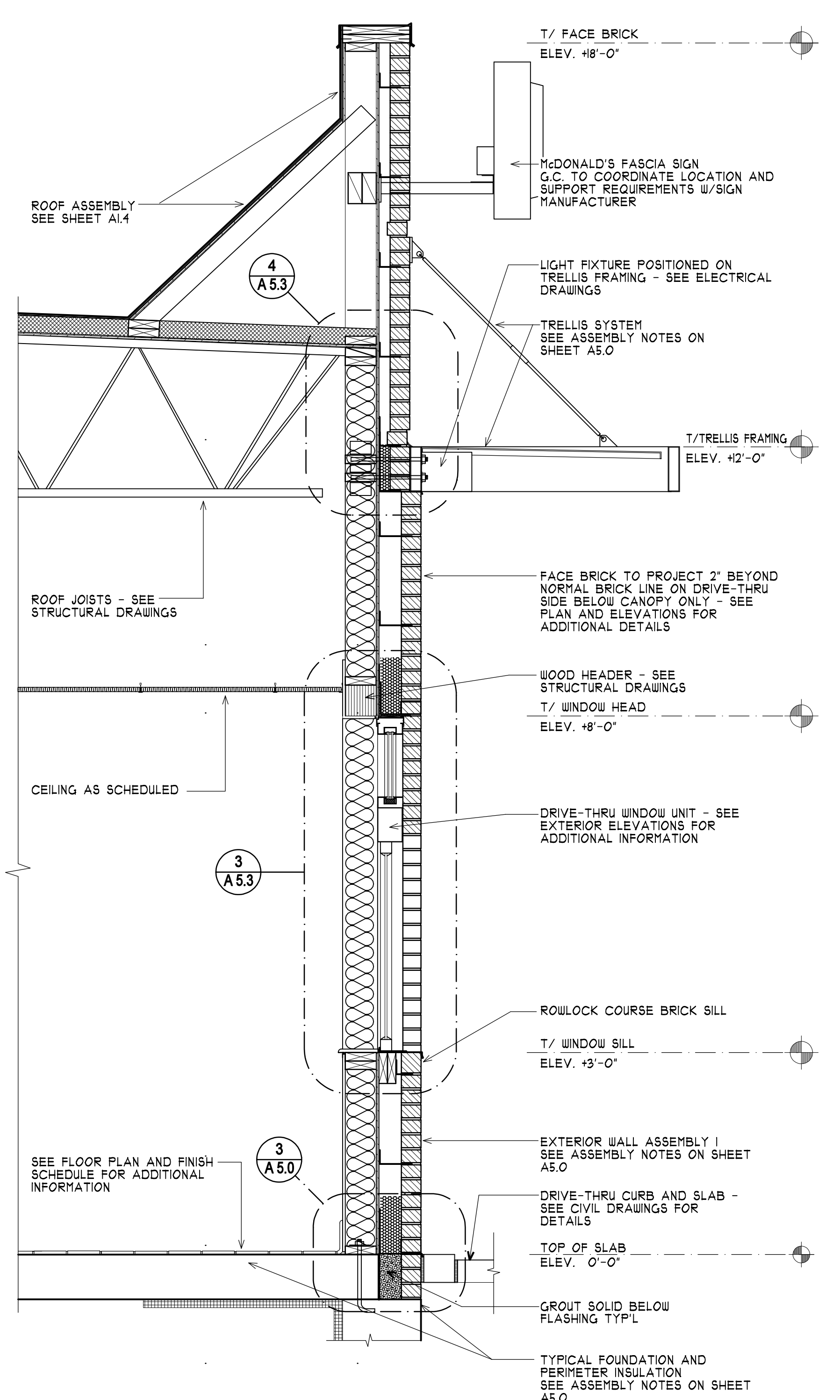
4 DETAIL-DRIVE-THRU WINDOW/CANOPY
A-5.3 SCALE: 1 1/2"=1'-0"



5 WALL SECTION-FREEZER/COOLER
A-5.3 SCALE: 3/4"=1'-0"



6 WALL SECTION-CREW ROOM
A-5.3 SCALE: 3/4"=1'-0"



7 WALL SECTION-PRESENTER'S WINDOW
A-5.3 SCALE: 3/4"=1'-0"

PLOT DATE & TIME: 8/16/2007 9:54 AM
 FILE PATH & NAME: F:\DATA\PROJECTS\MCDONALD'S\M-1000S\M-1032 PORTLAND, ME\ARCHITECTURAL-DRAWINGS\M-1032_A5-3_SECTIONS

| | | |
|-----|------|----|
| NO. | DATE | BY |
| 1 | | |
| 2 | | |
| 3 | | |
| 4 | | |
| 5 | | |
| 6 | | |
| 7 | | |

Landry ARCHITECTS
 300 BROADWAY, SUITE 200
 PORTLAND, ME 04101
 TEL: 603.850.6414 FAX: 603.854.4359
 WWW.LANDRYARCHITECTS.COM

DRAWN BY: S.A. DATE ISSUED: 08/14/07
 CHECKED BY: T.B.D. SCALE: AS NOTED
 DATE DRAWN: 04/17/07 JOB NUMBER: M-1032

CONSULTANT:

WALL SECTIONS AND DETAILS

McDonald's

RESTAURANT LOCATION:
 332 St. John Street
PORTLAND, ME

PREPARED FOR:
McDonald's USA, LLC
 McDONALD'S PLAZA
 OAK BROOK, ILLINOIS
 60521

SHEET NUMBER:
A-5.3