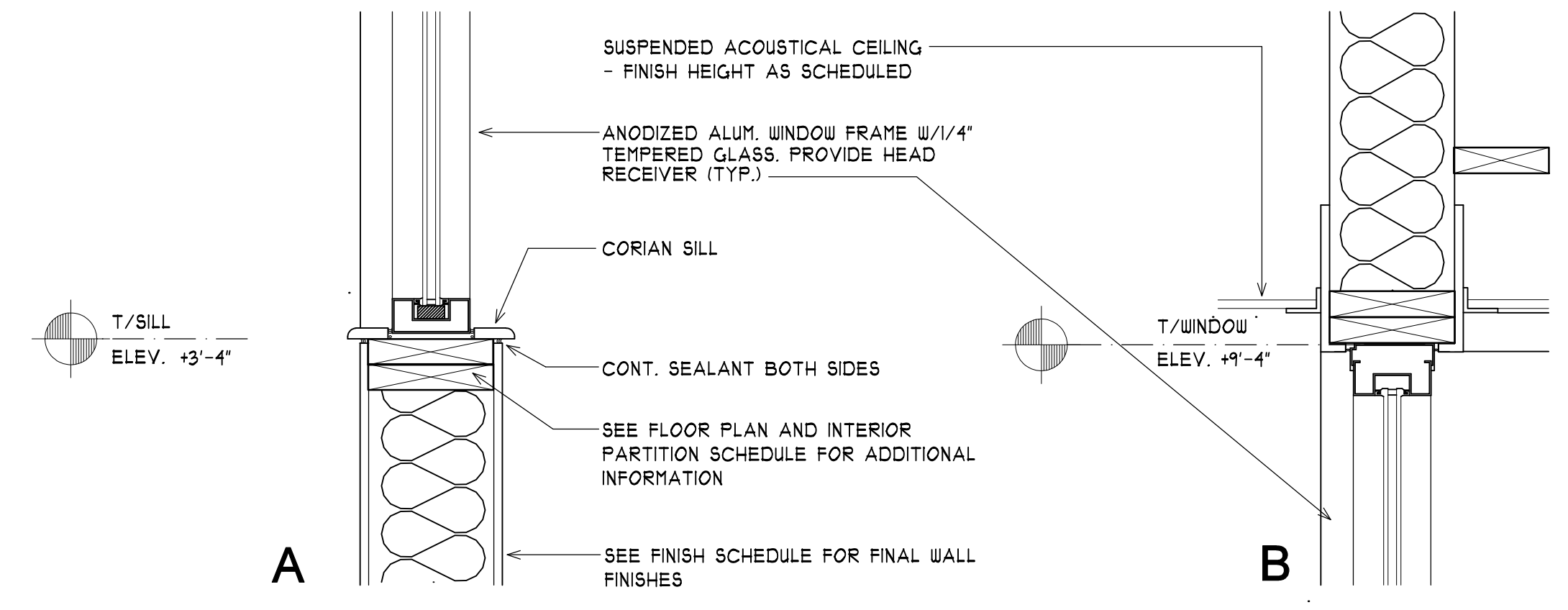
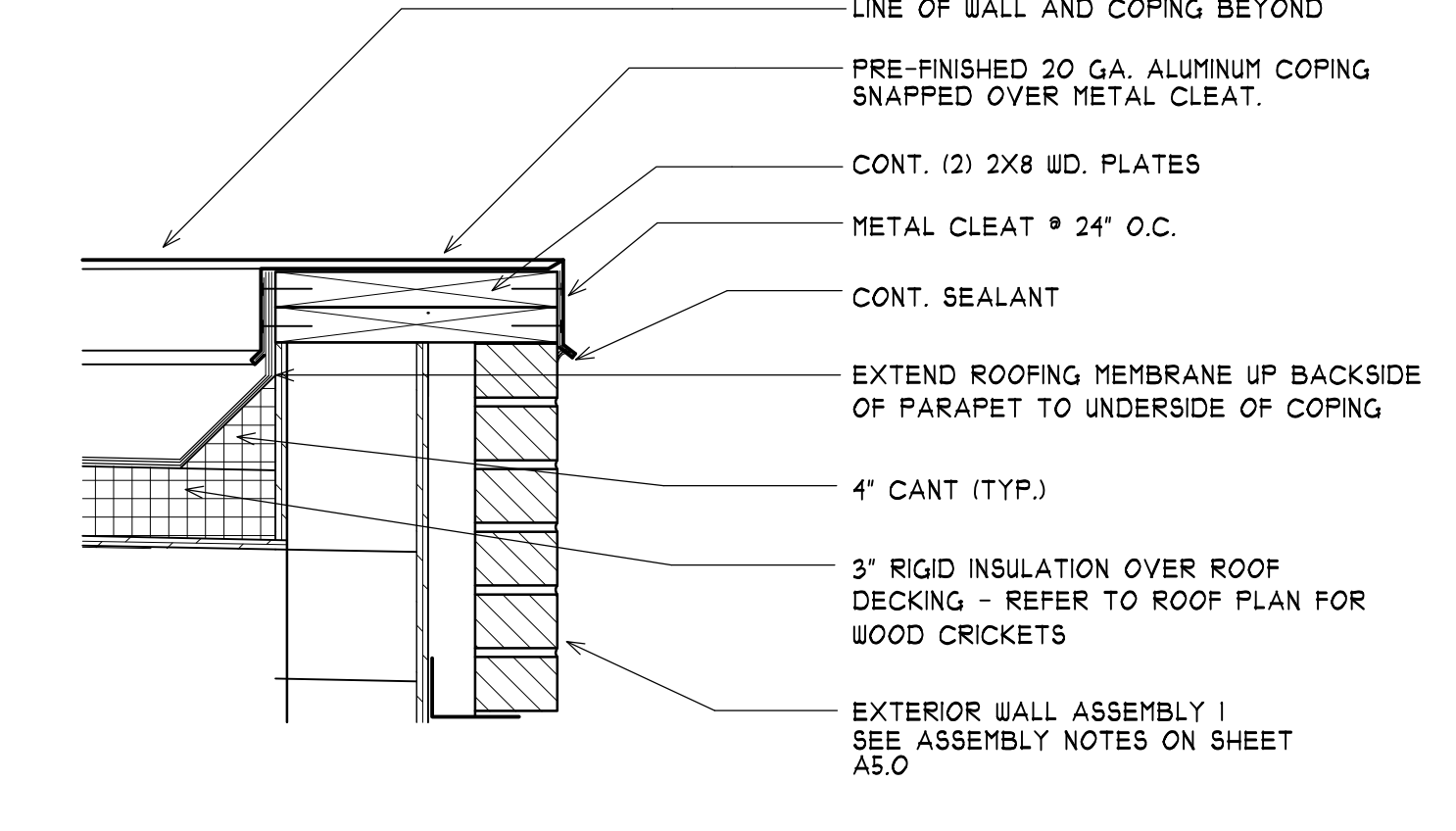


1 DETAIL-HEARTH CAP
A-5.2 SCALE: 1 1/2"=1'-0"

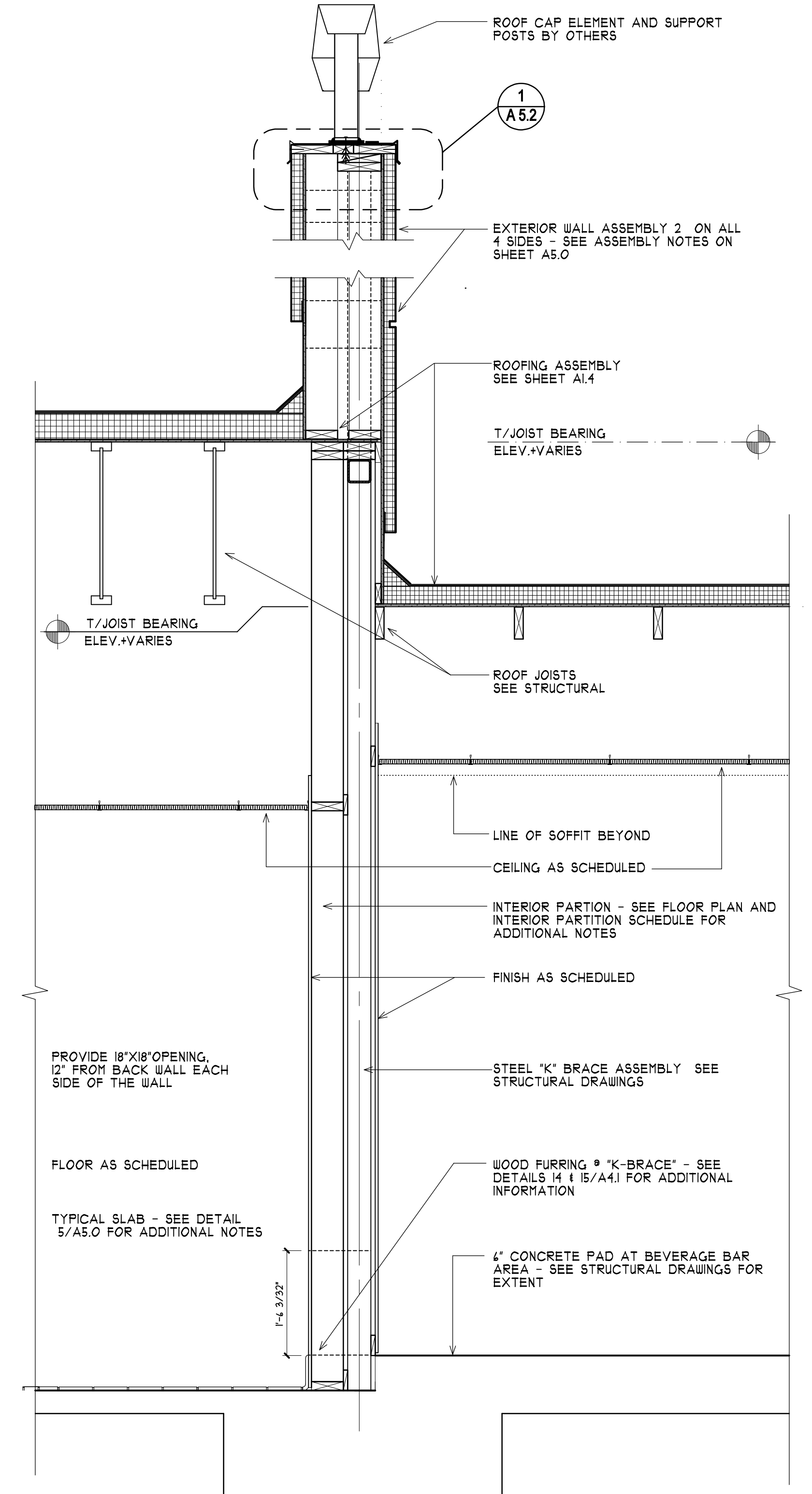


2 HEAD & SILL @ INTERIOR VESTIBULE WALL
A-5.2 SCALE: 1 1/2"=1'-0"

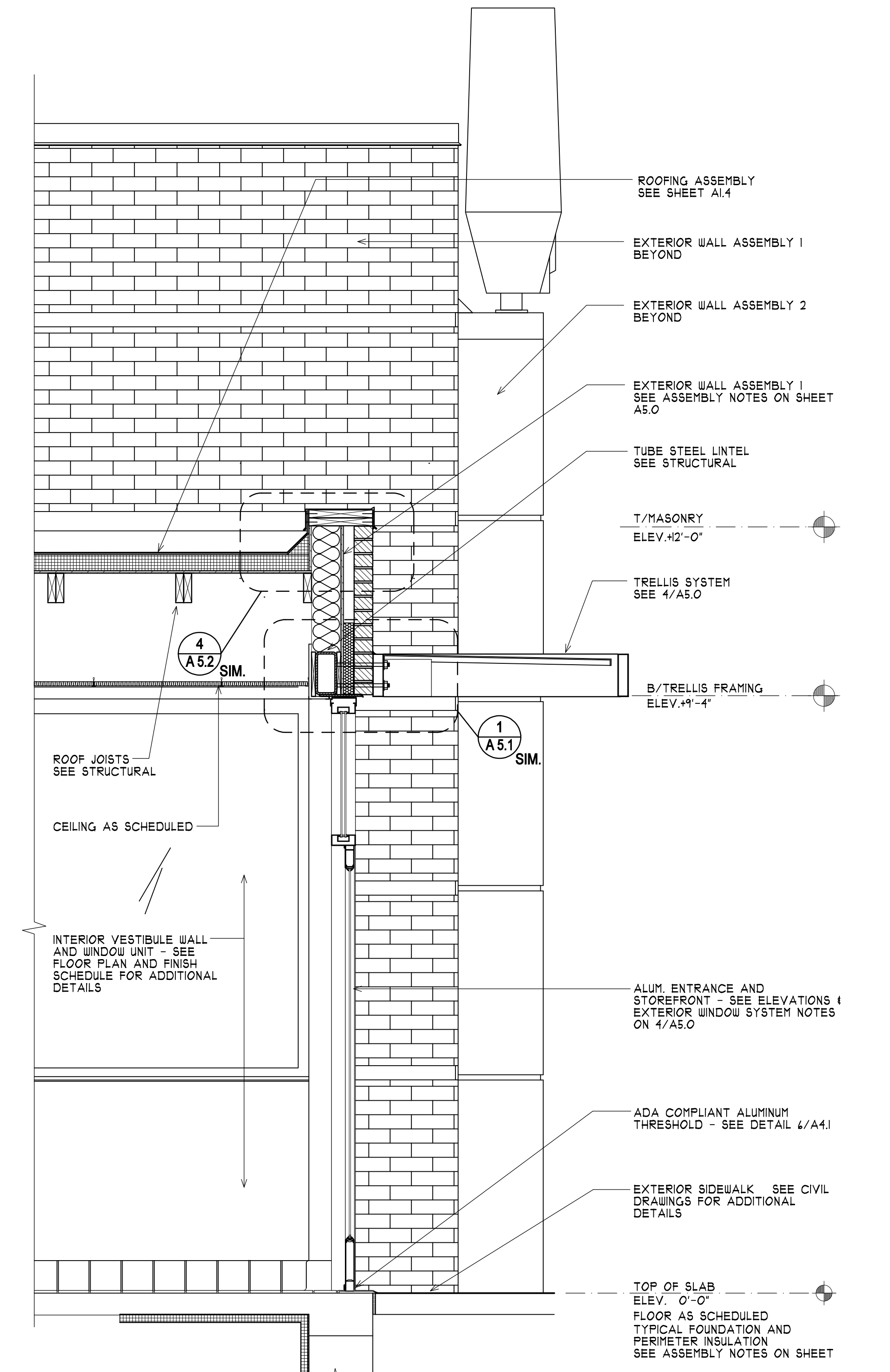
3 NOT USED
A-5.2 SCALE: 1 1/2"=1'-0"



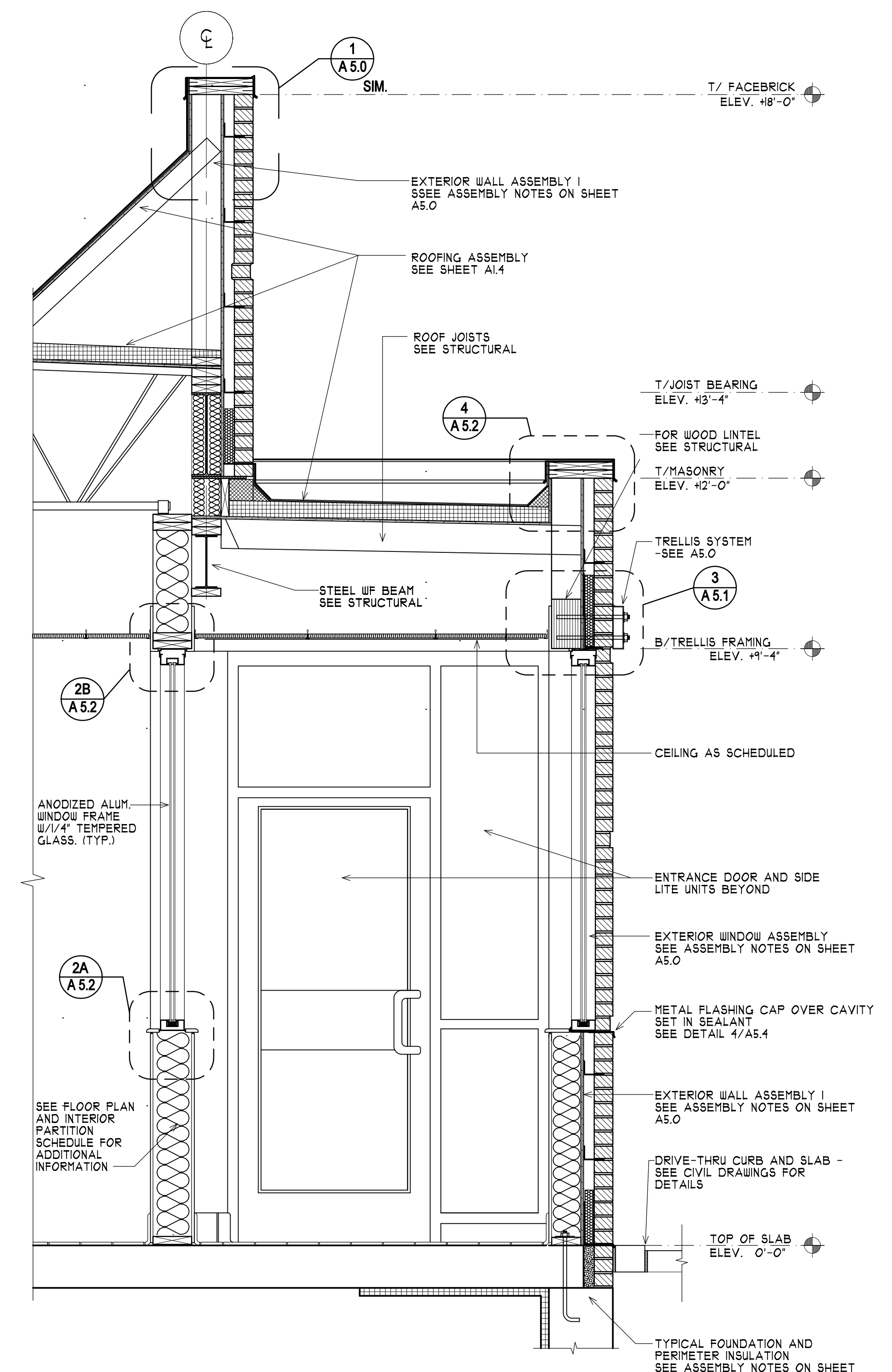
4 COPING DETAIL @ LOW ROOF
A-5.2 SCALE: 1 1/2"=1'-0"



5 WALL SECTION-"HEARTH" WALL/BEVERAGE BAR
A-5.2 SCALE: 3/4"=1'-0"



6 WALL SECTION-FRONT ENTRANCE
A-5.2 SCALE: 3/4"=1'-0"



7 WALL SECTION-FRONT ENTRANCE
A-5.2 SCALE: 3/4"=1'-0"

NO.	DATE	BY
1		
2		
3		
4		
5		
6		
7		

Landry ARCHITECTS
3000 W. 10TH AVE. SUITE 100
DENVER, CO 80202
P: 303.896.6414 F: 303.894.4359

DRAWN BY: S.A. DATE ISSUED: 08/14/07
CHECKED BY: T.B.D. SCALE: AS NOTED
DATE DRAWN: 04/17/07 JOB NUMBER: M-1032

CONSULTANT:

WALL SECTIONS AND DETAILS

McDonald's

RESTAURANT LOCATION:
332 St. John Street
PORTLAND, ME

PREPARED FOR:
McDonald's USA, LLC
McDONALD'S PLAZA
OAK BROOK, ILLINOIS 60521

SHEET NUMBER:
A-5.2

PLOT DATE & TIME: 8/16/2007 9:52 AM
FILE PATH & NAME: F:\DATA\PROJECTS\MCDONALD'S\M-1000S\M-1032_PORTLAND_ME\ARCHITECTURAL-DRAWINGS\M-1032_A5-2_SECTIONS