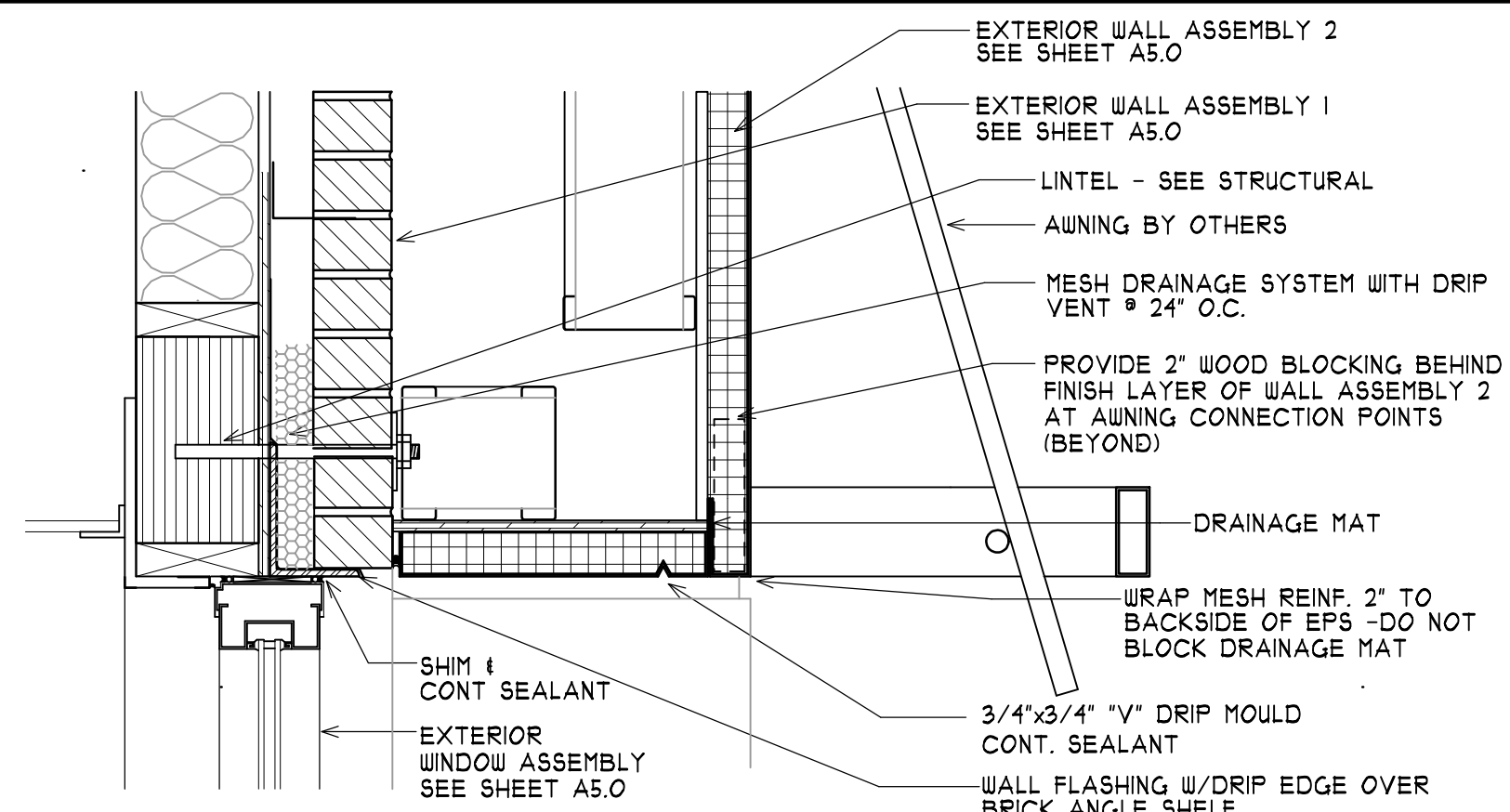
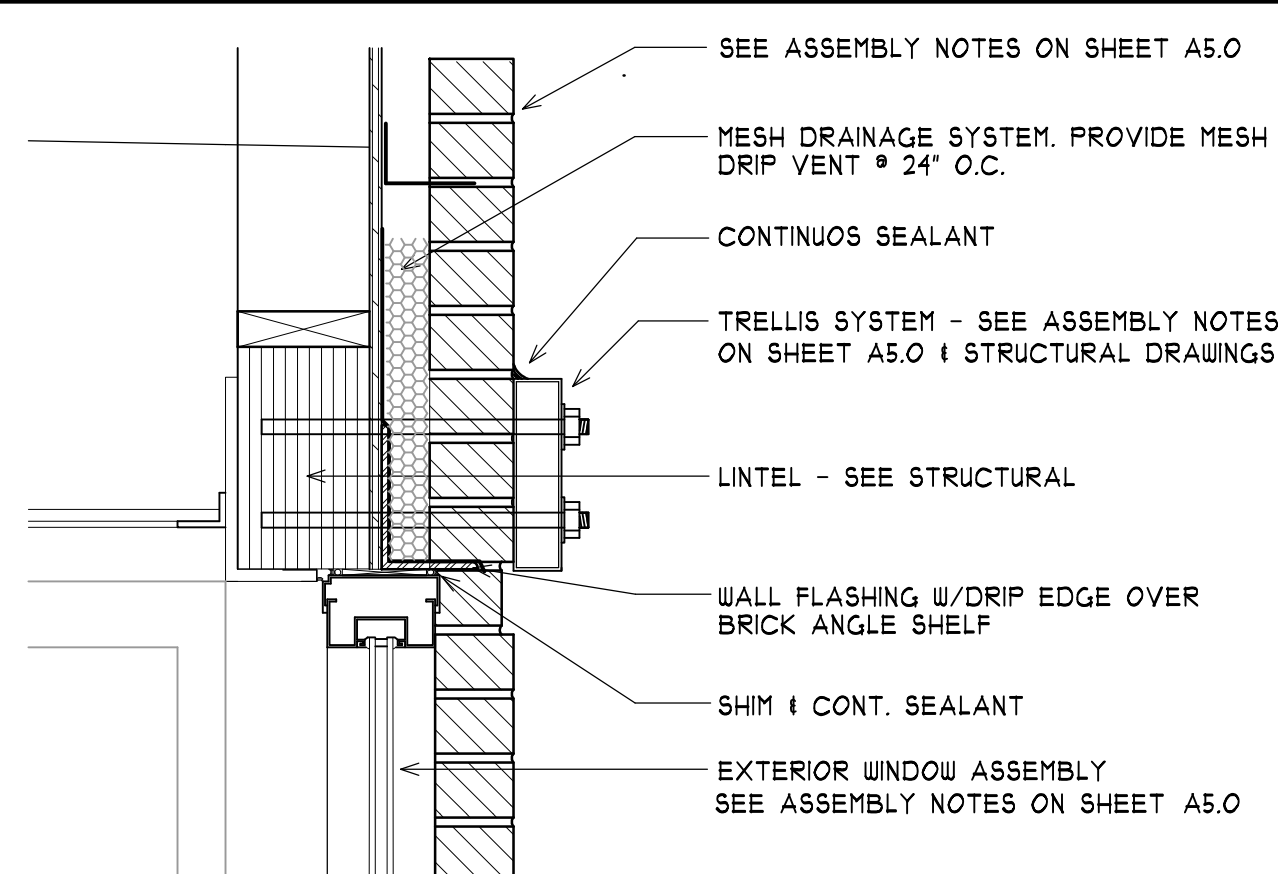


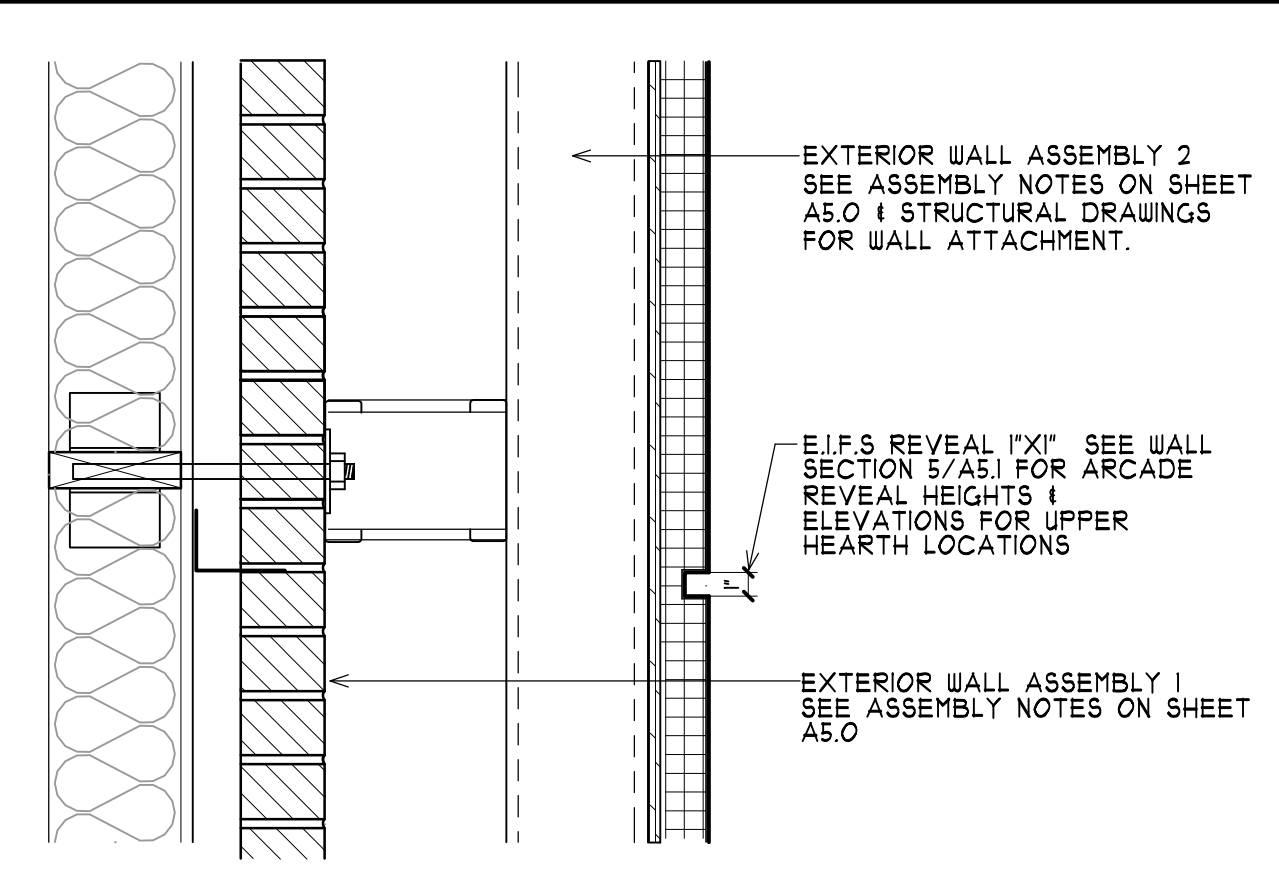
1 **DETAIL-WINDOW HEAD @ TRELLIS**
A-5.1 SCALE: 1 1/2"=1'-0"



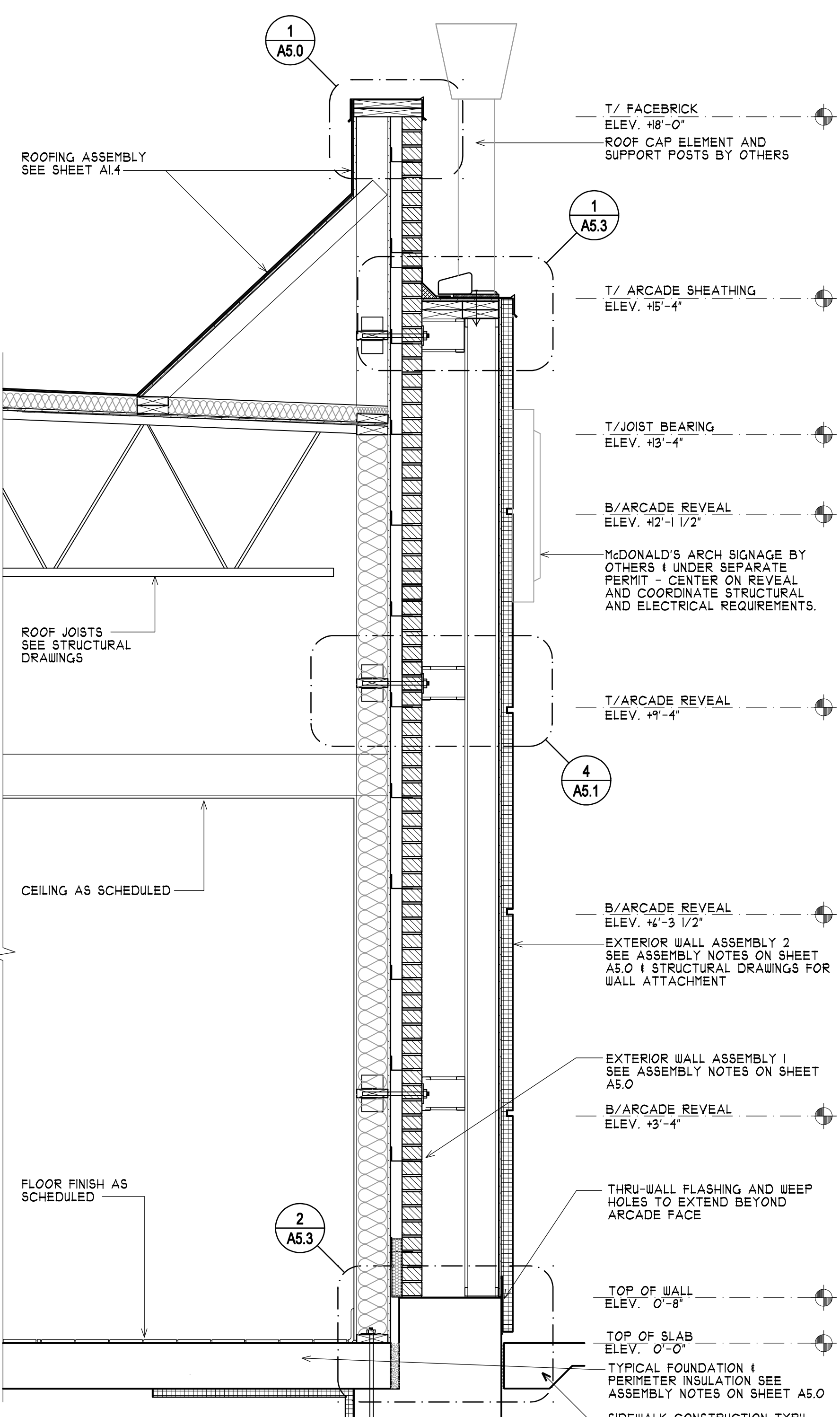
2 **DETAIL-WINDOW HEAD @ ARCADE**
A-5.1 SCALE: 1 1/2"=1'-0"



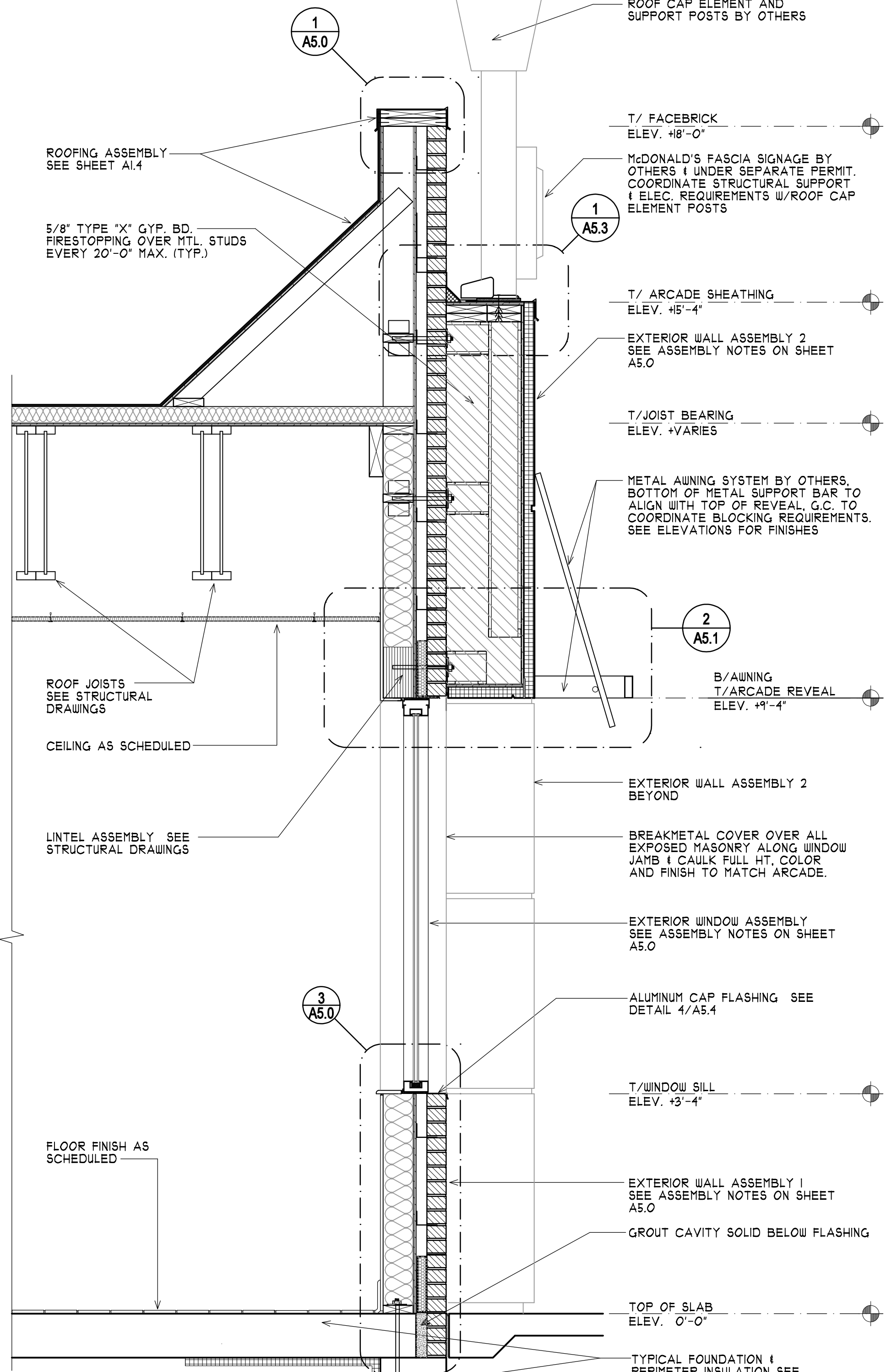
3 **DETAIL-TRELLIS @ FRONT VESTIBULE**
A-5.1 SCALE: 1 1/2"=1'-0"



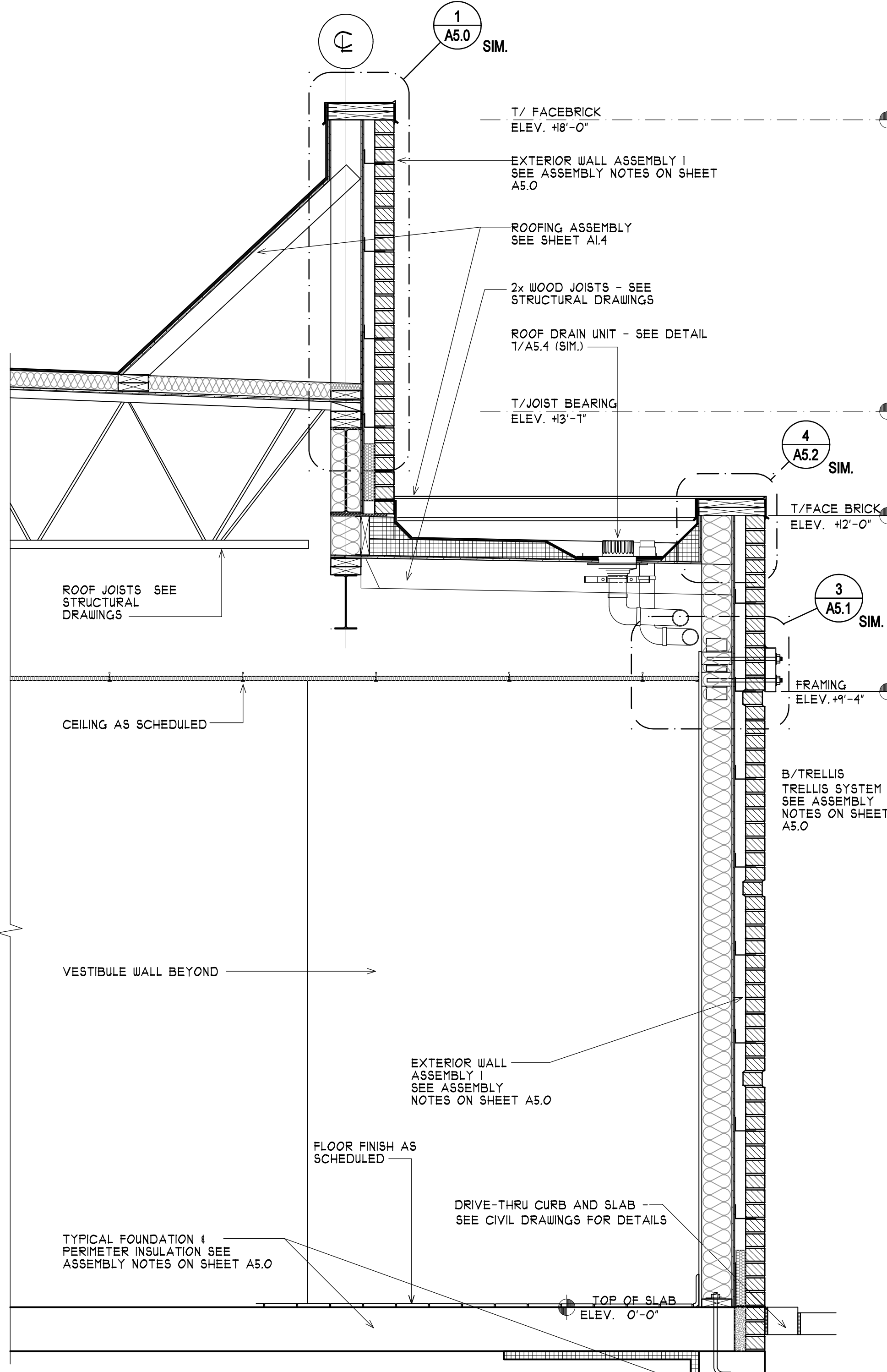
4 **DETAIL-REVEAL @ SIDEWALL**
A-5.1 SCALE: 1 1/2"=1'-0"



5 **WALL SECTION @ ARCADE PIER**
A-5.1 SCALE: 3/4"=1'-0"



6 **WALL SECTION @ FRONT WINDOW**
A-5.1 SCALE: 3/4"=1'-0"



7 **WALL SECTION @ SELF SERVE AREA**
A-5.1 SCALE: 3/4"=1'-0"

PLOT DATE & TIME: 8/16/2007 9:46 AM
FILE PATH & NAME: F:\DATA\PROJECTS\MCDONALD'S\1000S\M-1032 PORTLAND, ME\ARCHITECTURAL-DRAWINGS\M-1032_A5-1_SECTIONS

NO.	DATE	REVISIONS
1		
2		
3		
4		
5		
6		
7		

DRAWN BY: S.A. DATE ISSUED: 08/14/07
 CHECKED BY: T.B.D. SCALE: AS NOTED
 DATE DRAWN: 04/17/07 JOB NUMBER: M-1032

Landry ARCHITECTS
300 BROADWAY, SUITE 200
PORTLAND, ME 04101
TEL: 603.886.6414 FAX: 603.884.4359

WALL SECTIONS AND DETAILS

McDonald's

RESTAURANT LOCATION:
**332 St. John Street
PORTLAND, ME**

PREPARED FOR:
McDonald's USA, LLC
McDONALD'S PLAZA
OAK BROOK, ILLINOIS
60052

SHEET NUMBER:
A-5.1