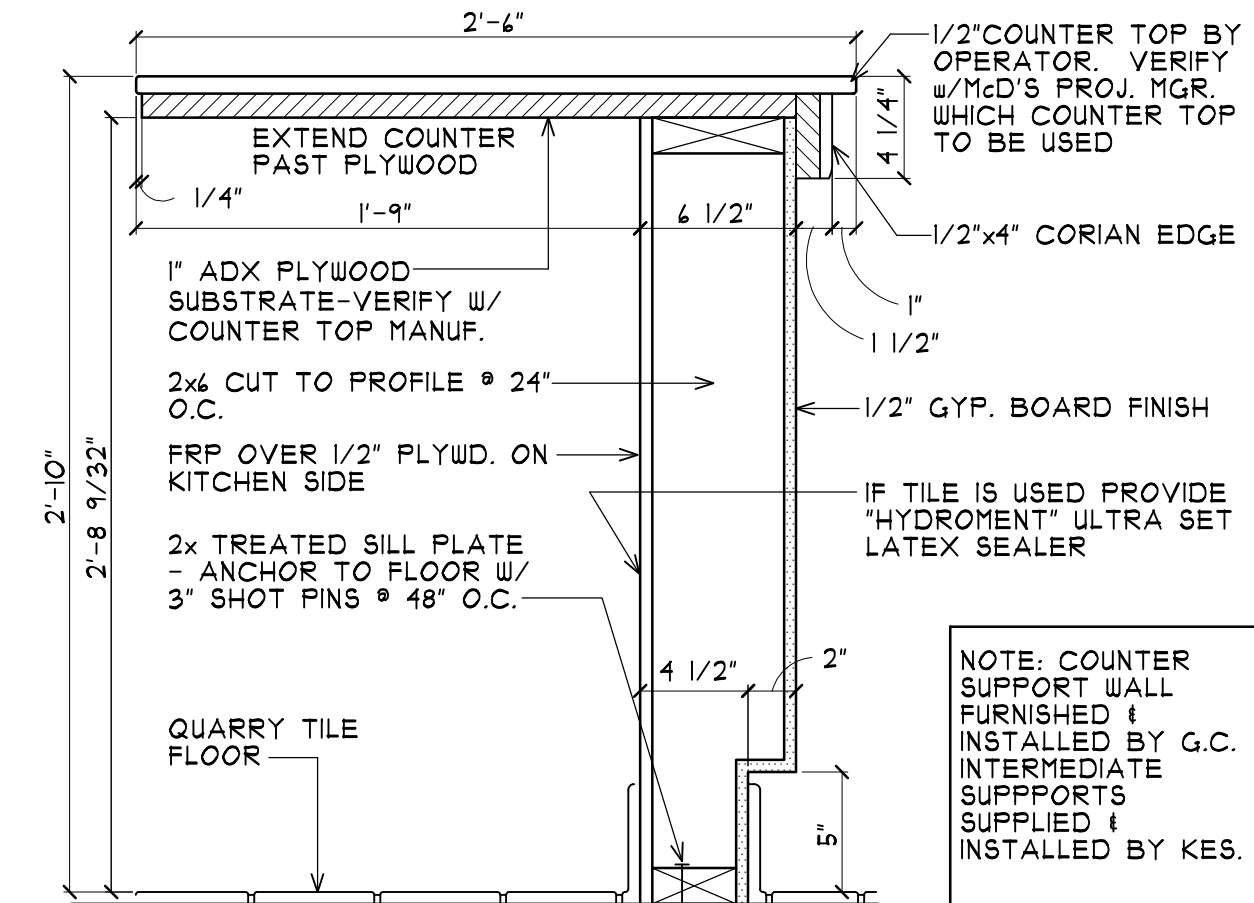
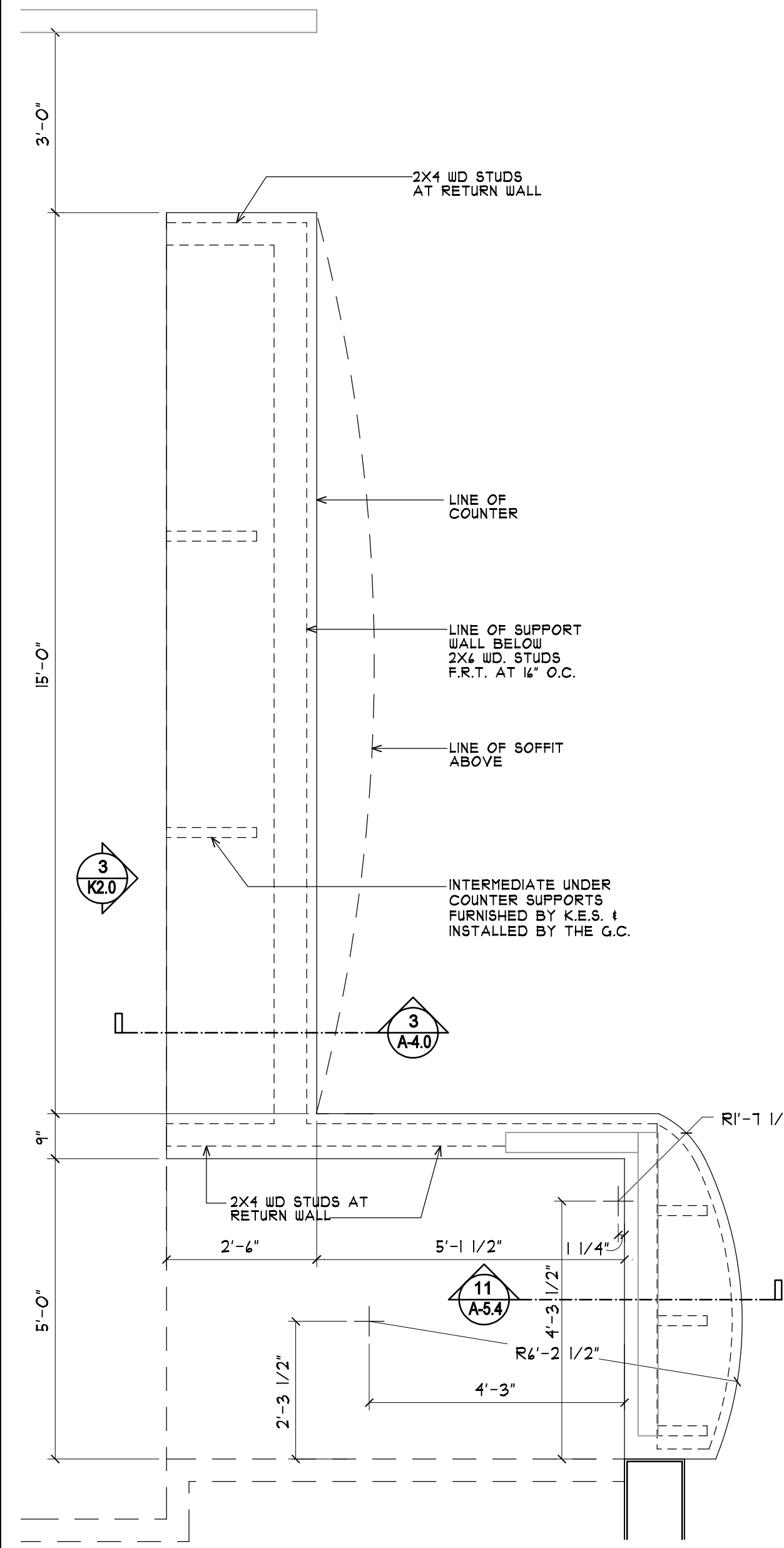


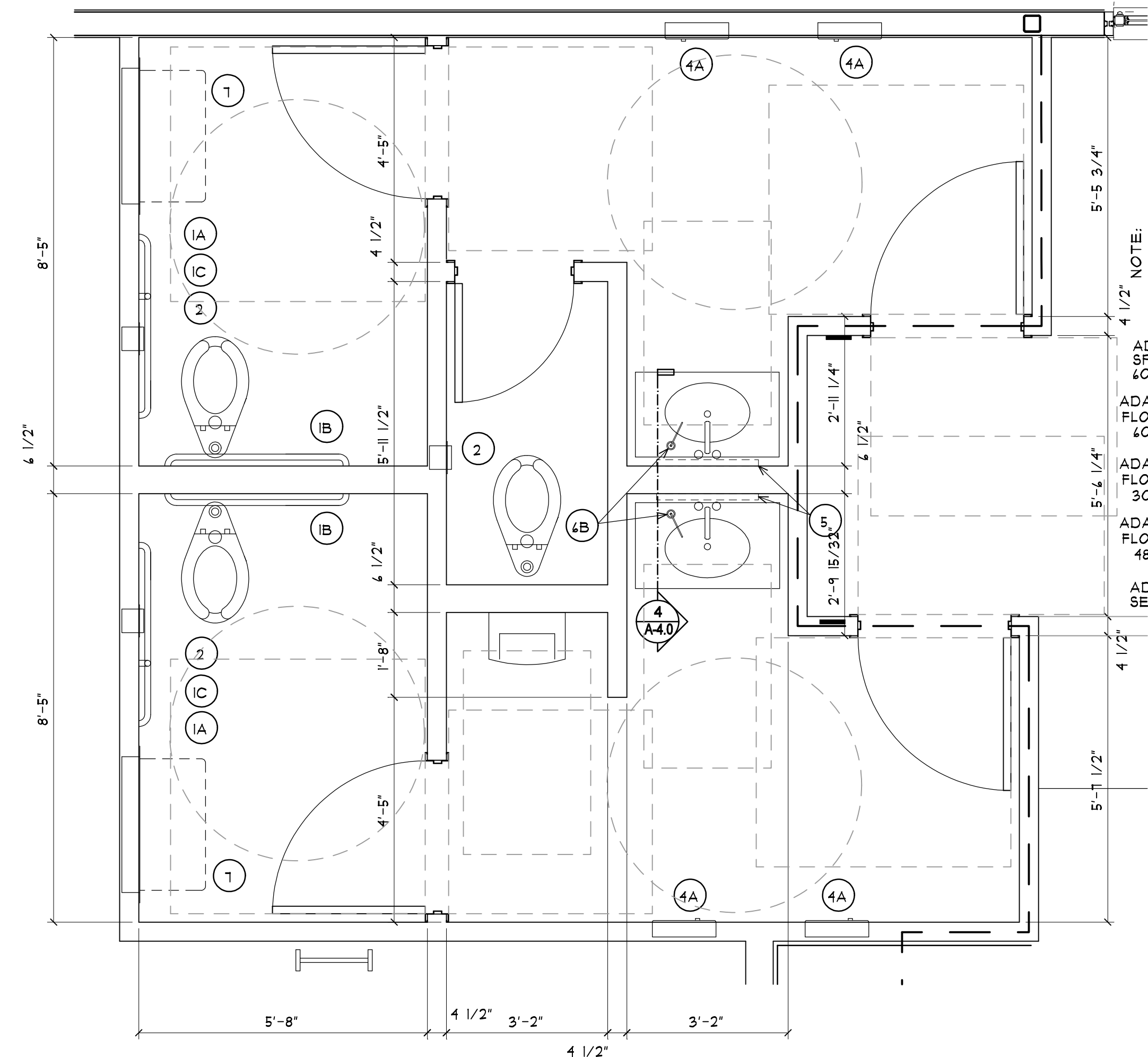
4 SECTION @ LAVATORY
 SCALE: 1"=1'-0"



3 COUNTERTOP SECTION
 SCALE: 1 1/2"=1'-0"

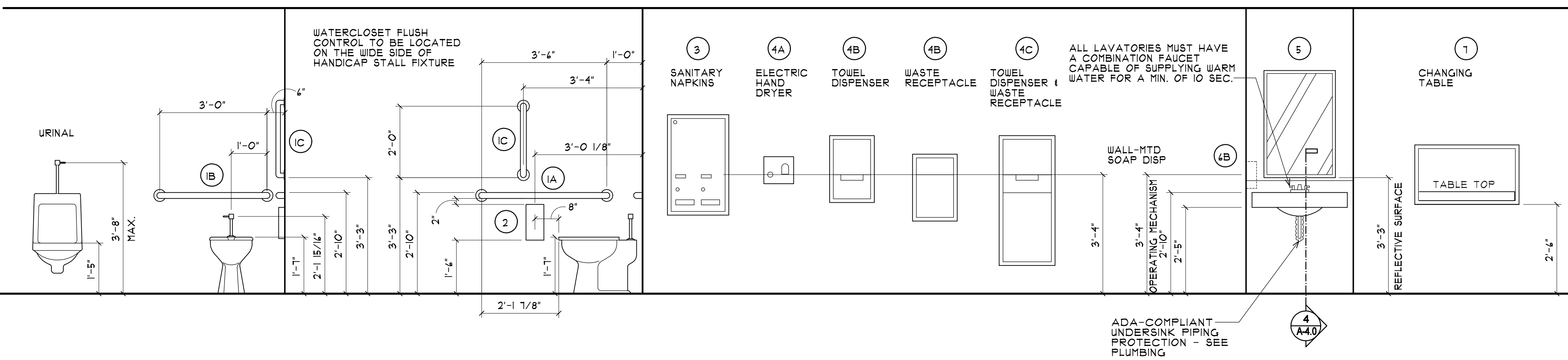


2 FRONT COUNTER PLAN
 SCALE: 1/2"=1'-0"



1 RESTROOM PLAN
 SCALE: 1/2"=1'-0"

NOTES
 1. ALL DIMENSIONS SHOWN ARE TAKEN TO GYP. BD.
 2. SEE SHEET A1.0 FOR PARTITION TYPES
 3. SEE SHEET A4.0 FOR DOOR AND FINISH SCHEDULES.
 4. SEE 4/A4.0 FOR FIXTURE MOUNTING HEIGHTS
 (X) = RESTROOM ACCESSORY - SEE 5/A4.0



6 RESTROOM FIXTURE AND ACCESSORY ELEVATIONS
 SCALE: 1/2"=1'-0"

ITEM (SEE NOTE 2)	MODEL #	SUPPLIER	BACKUP SUPPORT (SEE NOTE 3)
(1A) GRAB BAR 42"	812-001-42	UNIVERSAL MFG. 800-821-1414	(1) 2x4'S 4'-0" LONG CENTER MOUNTED
(1B) GRAB BAR 36"	812-001-36	UNIVERSAL MFG. 800-821-1414	
(1C) GRAB BAR 24"	812-001-24	UNIVERSAL MFG. 800-821-1414	
(2) TOILET TISSUE DISPENSER, DOUBLE, RECESSED	5412	BRADLEY I-800-BRADLEY	(2) 2x4'S 2'-6" LONG
(3) SANITARY NAPKIN RECEPTACLE, RECESSED	4131-15	BRADLEY 800-212-3539	
(4A) HAND DRYER, RECESSED, ADA, WHITE - OTHER COLORS AT ADTN COST	RA5Q-914	UNIVERSAL MFG. 800-821-1414	(1) 2x10 1'-4" LONG
(4B) TOWEL DISPENSER & WASTE RECEPTACLE, INDIVIDUAL, RECESSED	2441	BRADLEY 800-212-3539	
(4C) TOWEL DISPENSER & WASTE RECEPTACLE, COMBINATION, RECESSED	2251	BRADLEY 800-212-3539	
(5) MIRROR, ANGLE FRAME	#181 24"x36"	UNIVERSAL MFG. 800-821-1414	
(6A) SOAP DISPENSER, COUNTER MOUNTED, 4" SPOUT	4324-68	UNIVERSAL MFG. 800-821-1414	
(6B) SOAP DISPENSER, WALL-MOUNTED	4542	UNIVERSAL MFG. 800-821-1414	
(7) BABY CHANGING TABLE, HORIZONTAL, RECESSED, ADA COMPLIANT	KB100-MDTA	KOALA KARE CORP. 800-444-0363	FRAME WALL RECESS PER MANUFACTURER'S RECOMMENDATIONS
(8) DIAPER CONTAINER (OPTIONAL)	-	BY OWNER	

NOTES
 1) SEE 5/A4.0 FOR ACCESSORY MOUNTING HEIGHTS
 2) SELECT ONE ITEM FROM ITEM GROUPS 4 & 4, VERIFY WITH PROJECT MANAGER.
 3) CUT BACK-UP SUPPORTS BETWEEN STUDS SO FACE OF SUPPORT IS FLUSH W/WALL STUD

5 RESTROOM ACCESSORY SCHEDULE
 SCALE: 1/2"=1'-0"

NO.	DATE	REVISIONS
1		
2		
3		
4		
5		
6		
7		

Landry ARCHITECTS
 317 BROADWAY, SUITE 200
 PORTLAND, ME 04101
 TEL: 603.886.6414 FAX: 603.884.4359

DATE ISSUED: 08/14/07
 S.A. T.B.D. SCALE: AS NOTED
 DRAWN BY: DATE DRAWN: 04/17/07
 CHECKED BY: AS NOTED
 JOB NUMBER: M-1032

CONSULTANT:

RESTROOM PLAN, ELEVATIONS, SCHEDULE AND NOTES

McDonald's

RESTAURANT LOCATION:
 332 St. John Street
PORTLAND, ME

PREPARED FOR:
McDonald's USA, LLC
 McDONALD'S PLAZA
 OAK BROOK, ILLINOIS 60521

SHEET NUMBER:
A-4.0