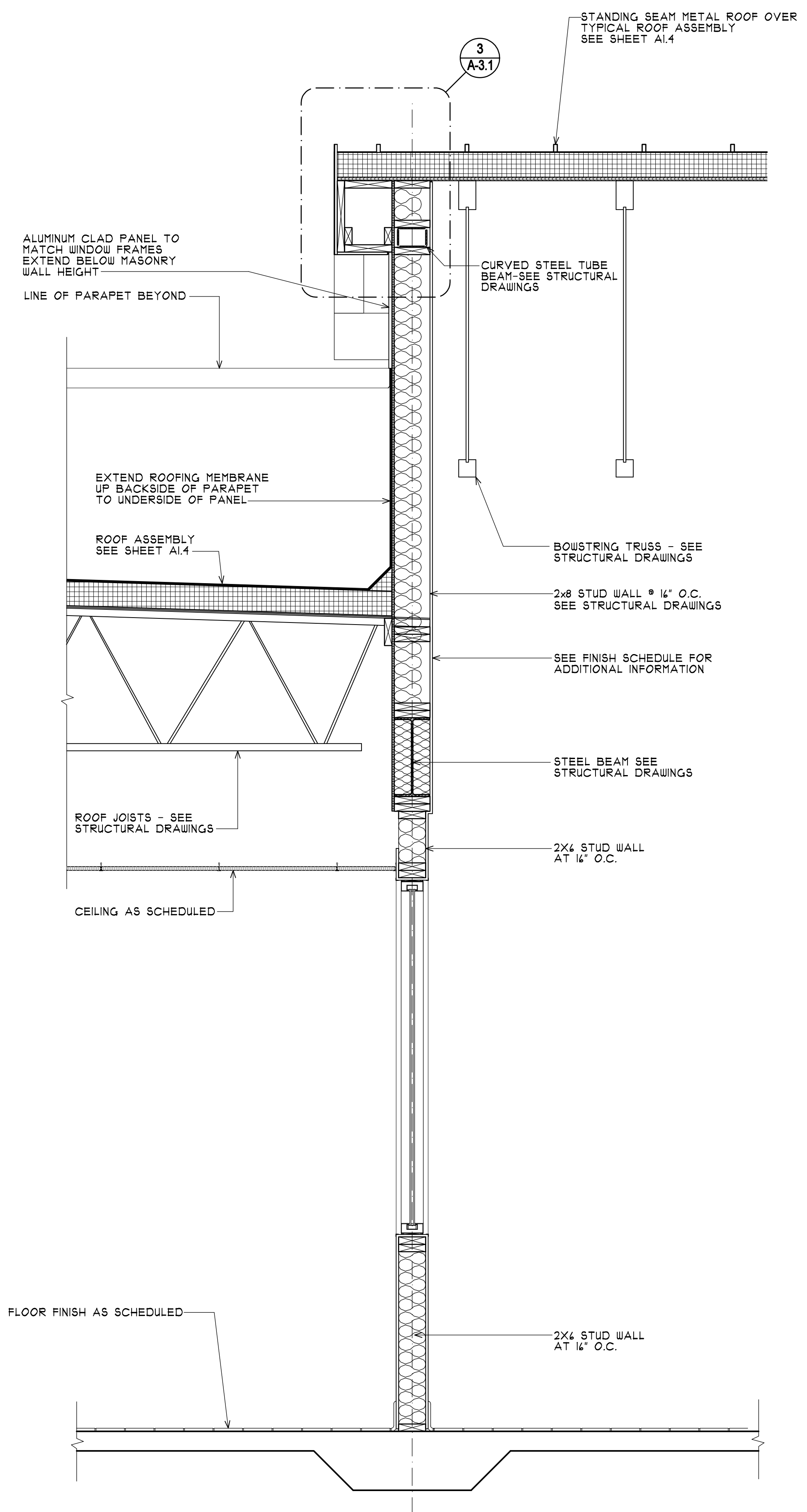
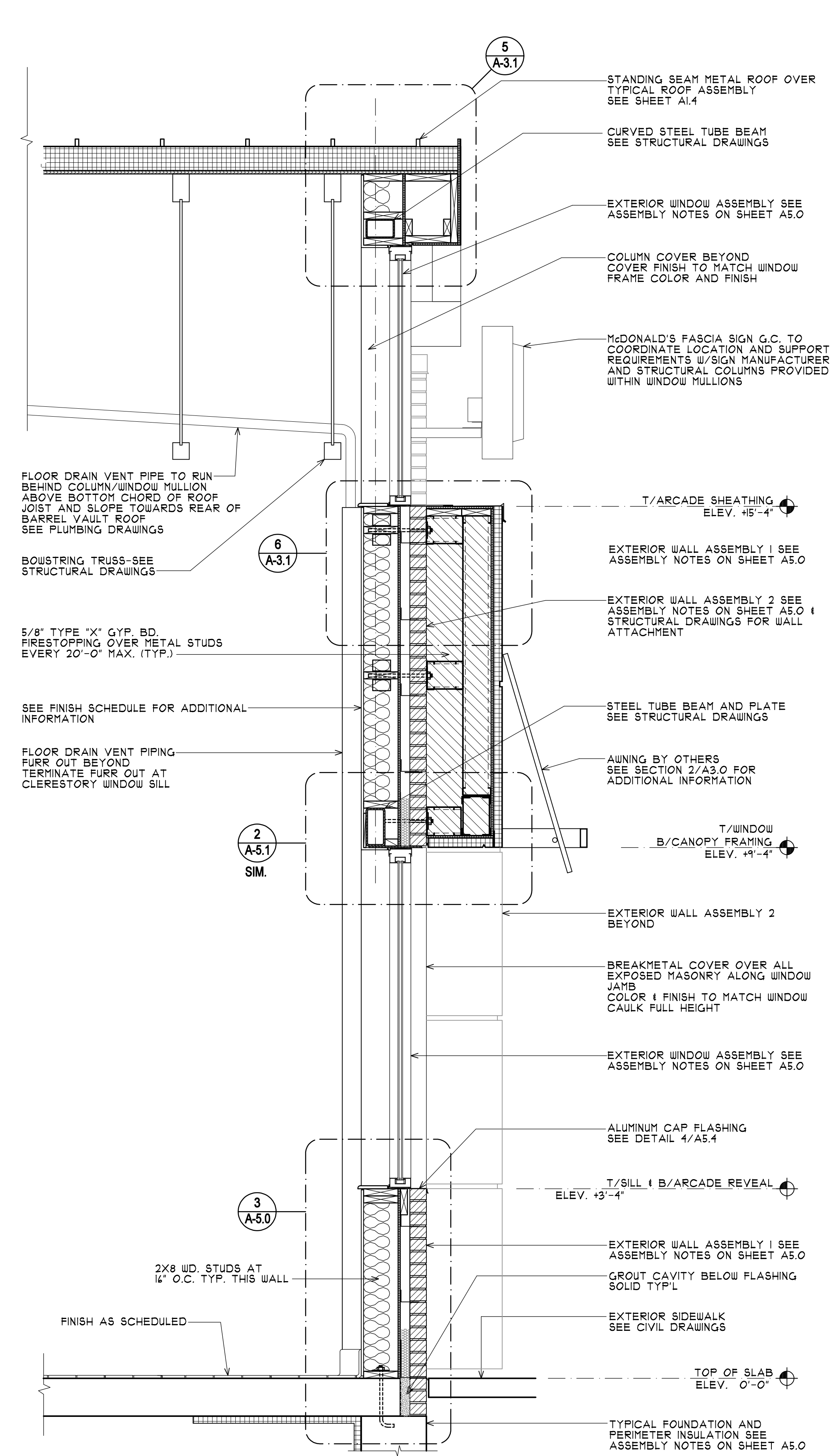


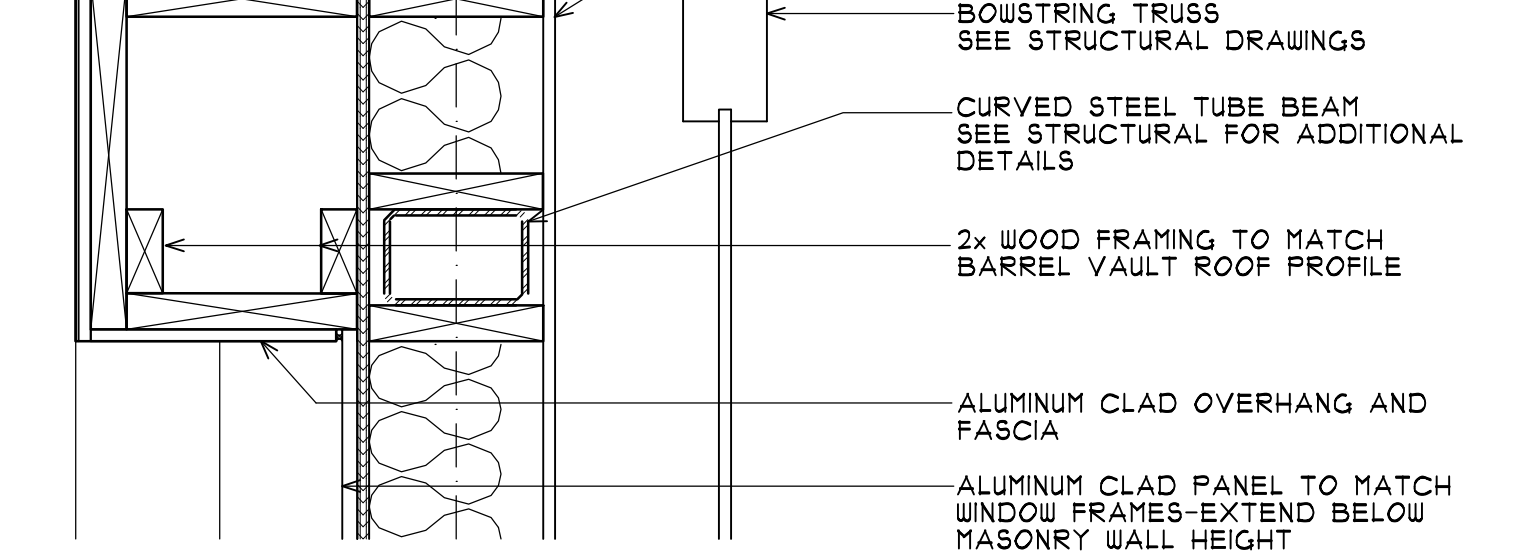
PLOT DATE & TIME: 8/16/2007 9:41 AM
 FILE PATH & NAME: F:\DATA\PROJECTS\MCDONALD'S\M-10005\M-1032 PORTLAND, ME\ARCHITECTURAL-DRAWINGS\M-1032_A-3-1_SECTIONS



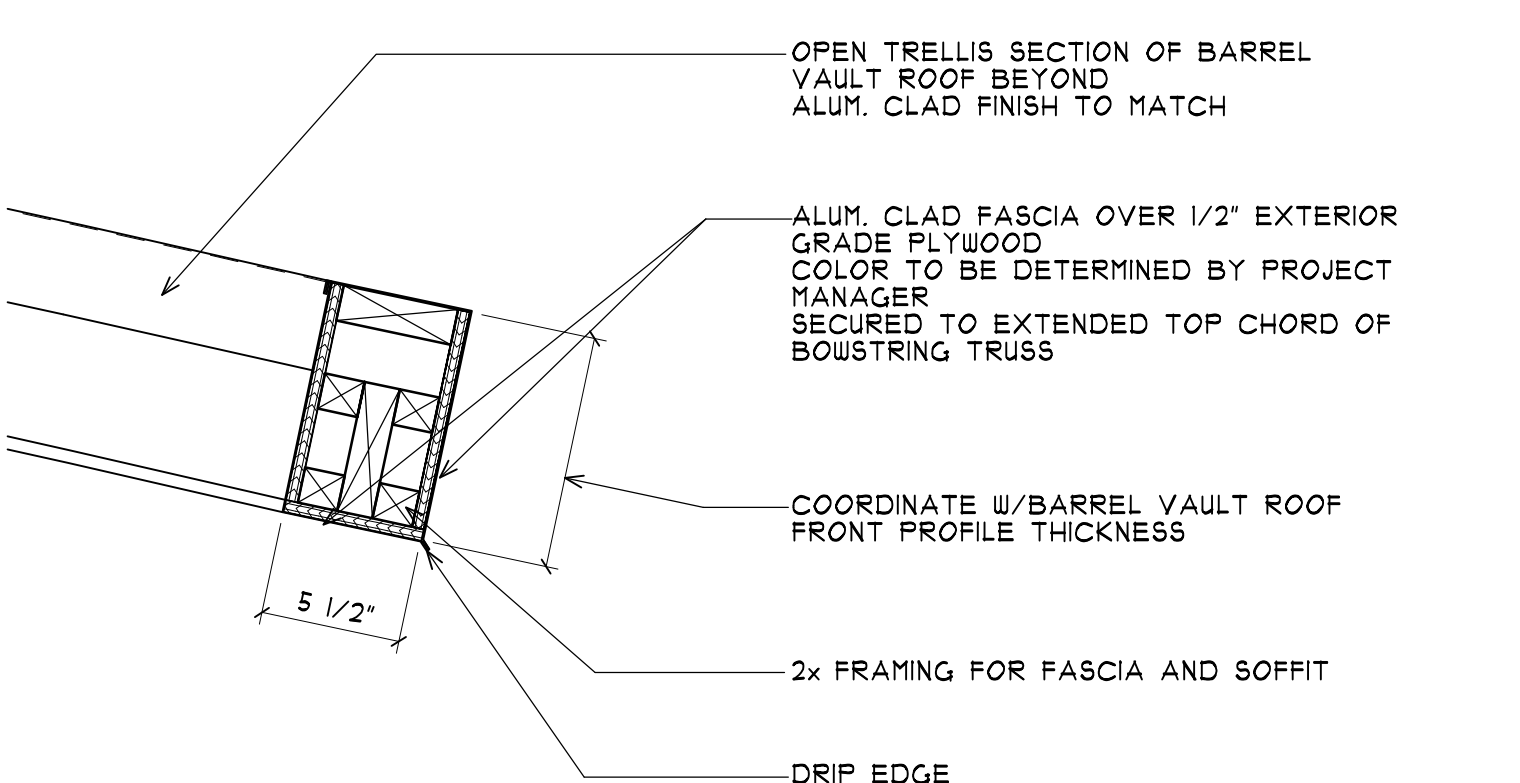
1 WALL SECTION @ REAR OF BARRELL VAULT
 A-3.1 SCALE: 3/4"=1'-0"



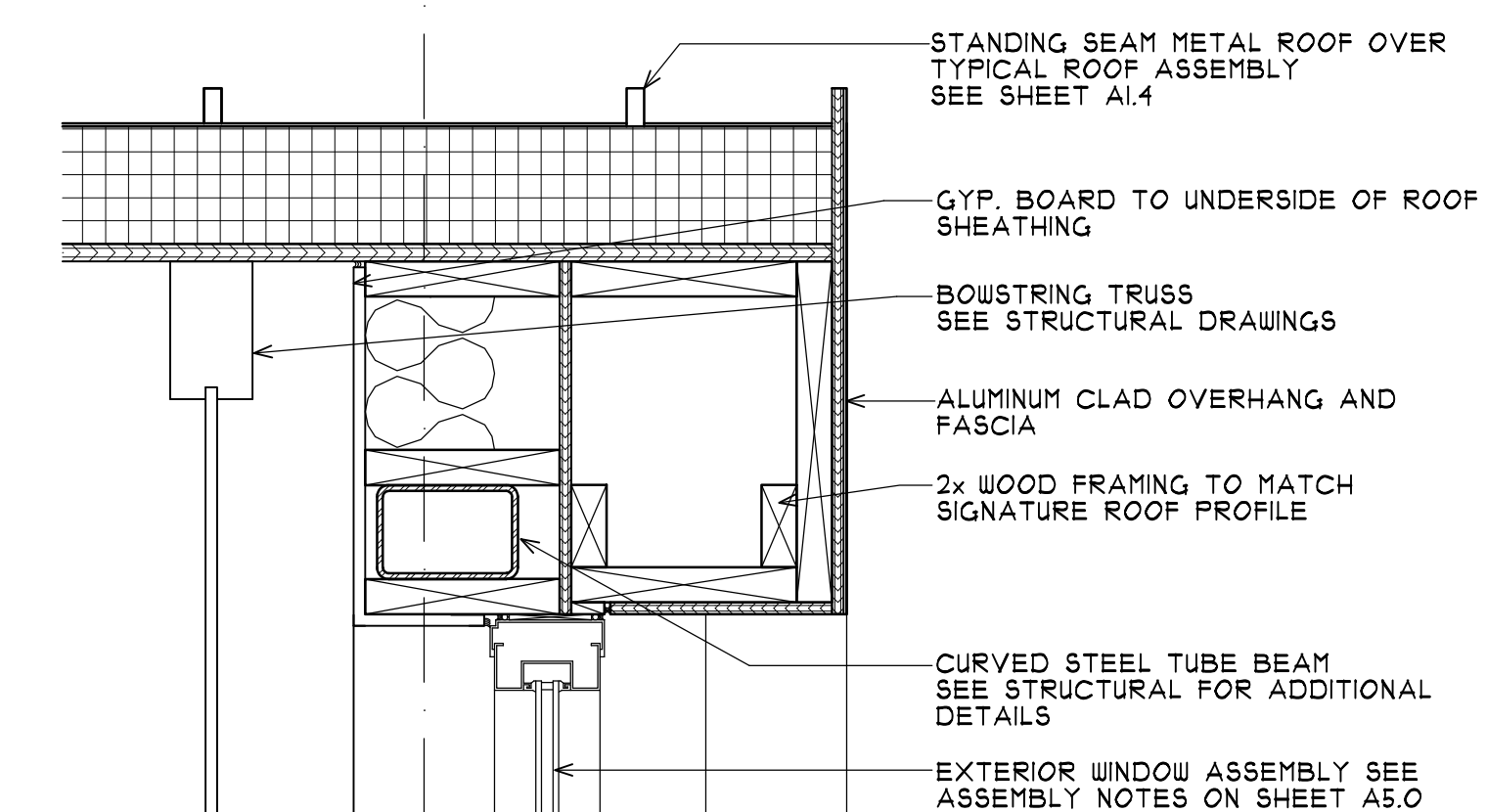
2 WALL SECTION @ PLAYPLACE
 A-3.1 SCALE: 3/4"=1'-0"



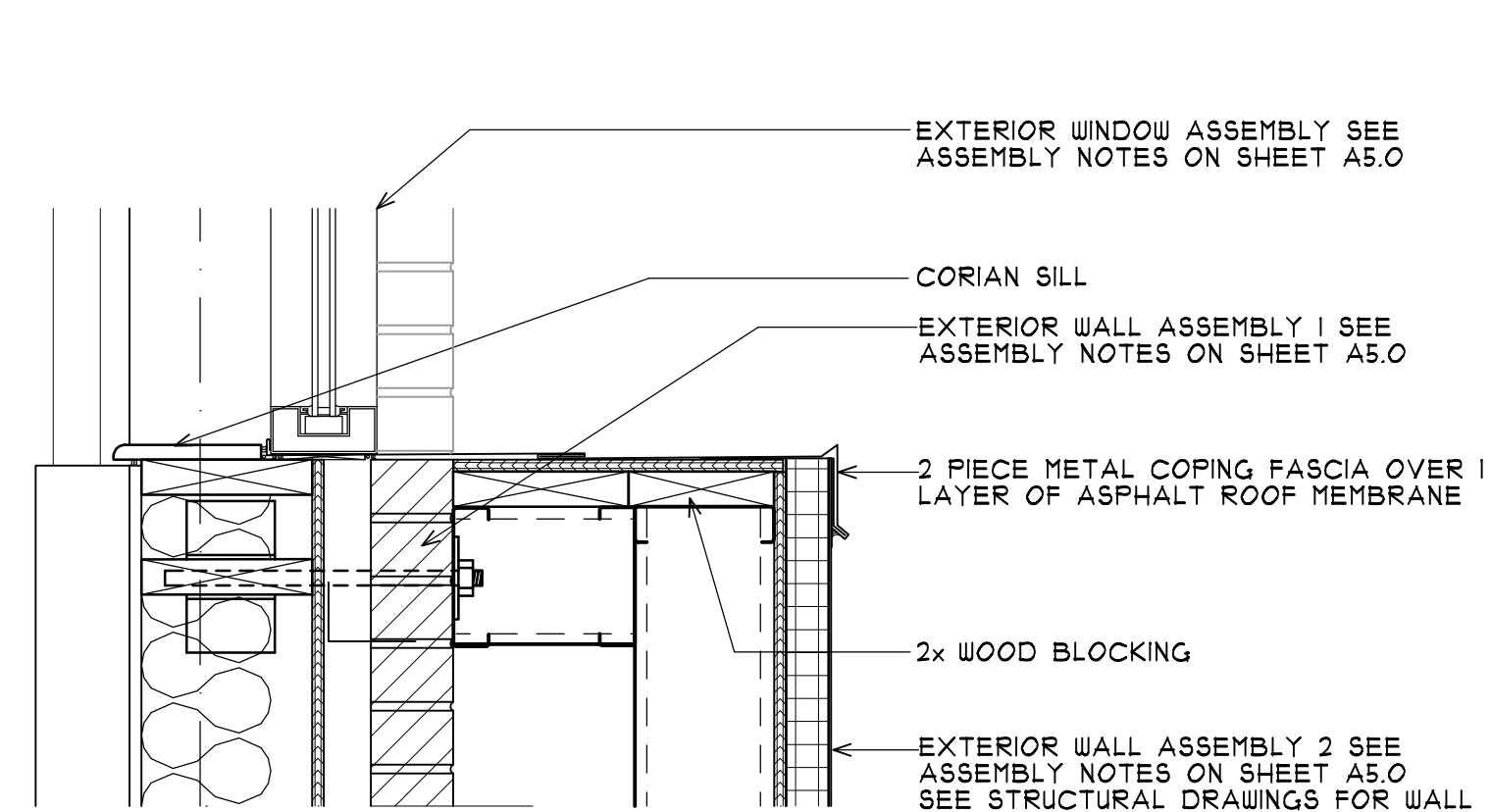
3 DETAIL - REAR FASCIA
 A-3.1 SCALE: 1 1/2"=1'-0"



4 DETAIL - BOXED FASCIA
 A-3.1 SCALE: 1 1/2"=1'-0"



5 DETAIL - FRONT FASCIA
 A-3.1 SCALE: 1 1/2"=1'-0"



6 DETAIL - WINDOW ARCADE SILL
 A-3.1 SCALE: 1 1/2"=1'-0"

NO.	DATE	BY
1		
2		
3		
4		
5		
6		
7		

REVISIONS

DATE ISSUED: 08/14/07
 SCALE: AS NOTED
 M-1032

DATE: 04/17/07
 JOB NUMBER: M-1032

DATE: 08/14/07
 SCALE: AS NOTED
 M-1032

DATE: 04/17/07
 JOB NUMBER: M-1032

CONSULTANT:

Landry ARCHITECTS
 332 ST. JOHN STREET
 PORTLAND, ME 04101
 TEL: 603.854.4359
 FAX: 603.854.4359
 WWW.LANDRYARCHITECTS.COM

SHEET TITLE: **WALL SECTIONS AND DETAILS**

McDonald's

RESTAURANT LOCATION:
 332 St. John Street
PORTLAND, ME

PREPARED FOR:
McDonald's USA, LLC
 McDONALD'S PLAZA
 OAK BROOK, ILLINOIS
 60521

SHEET NUMBER:
A-3.1