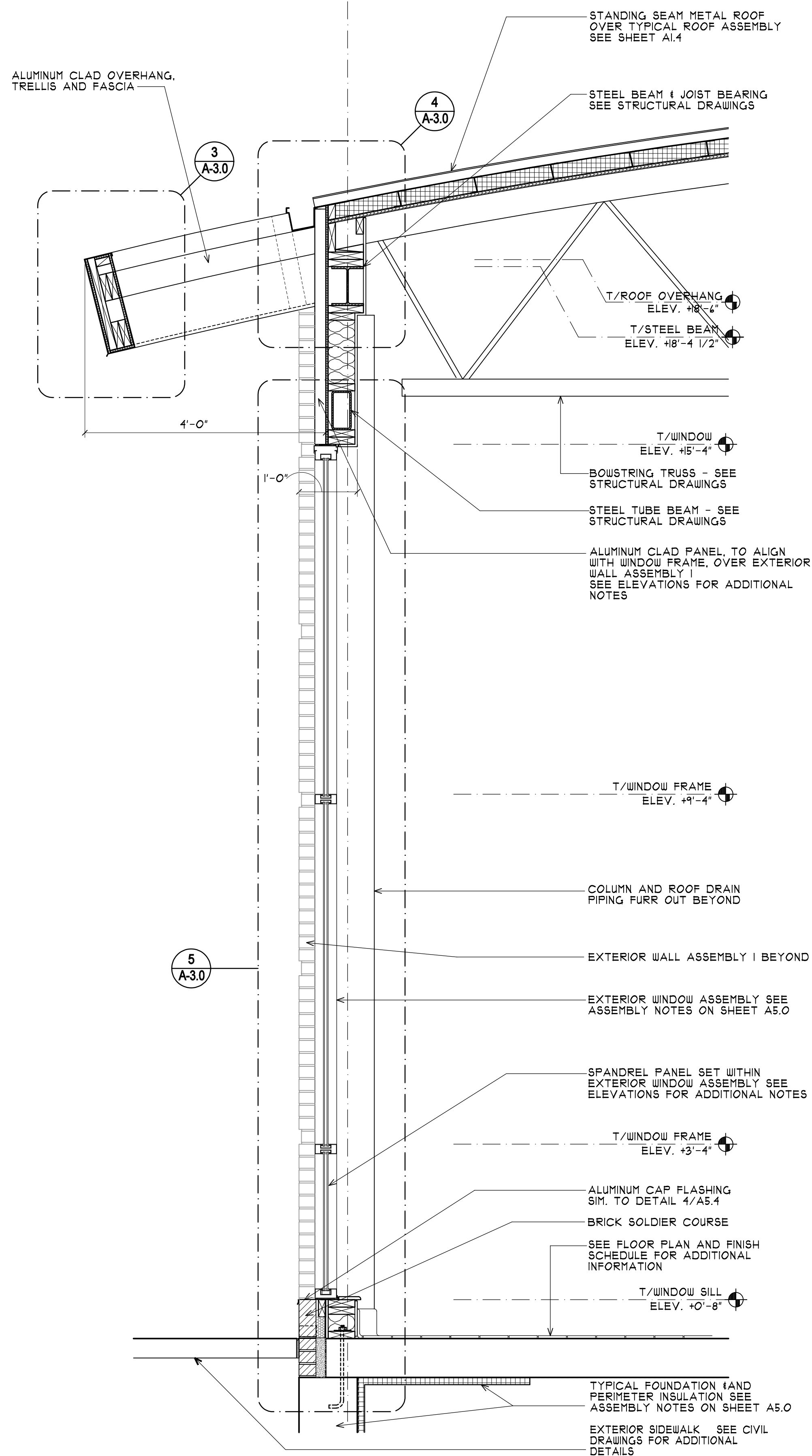
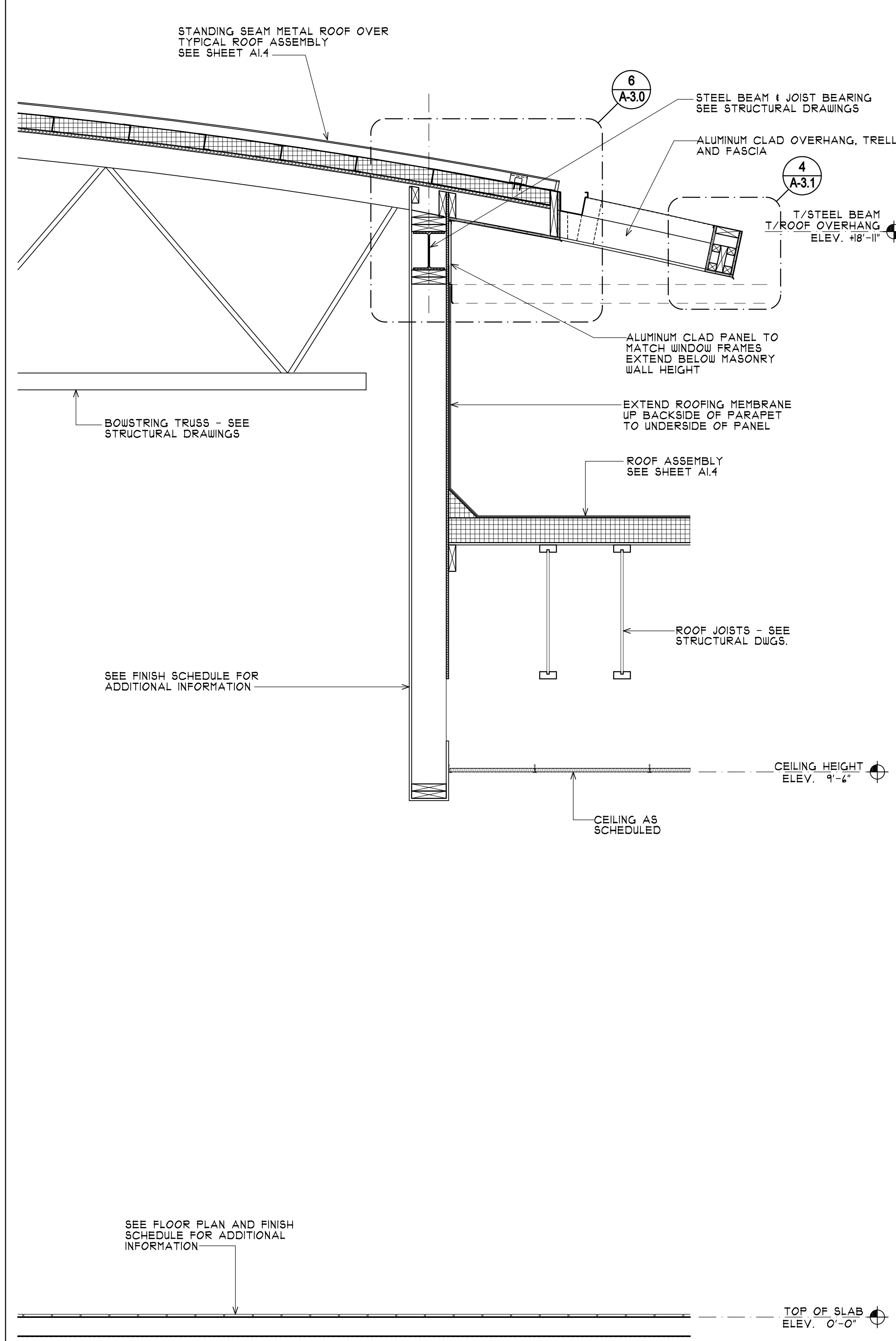


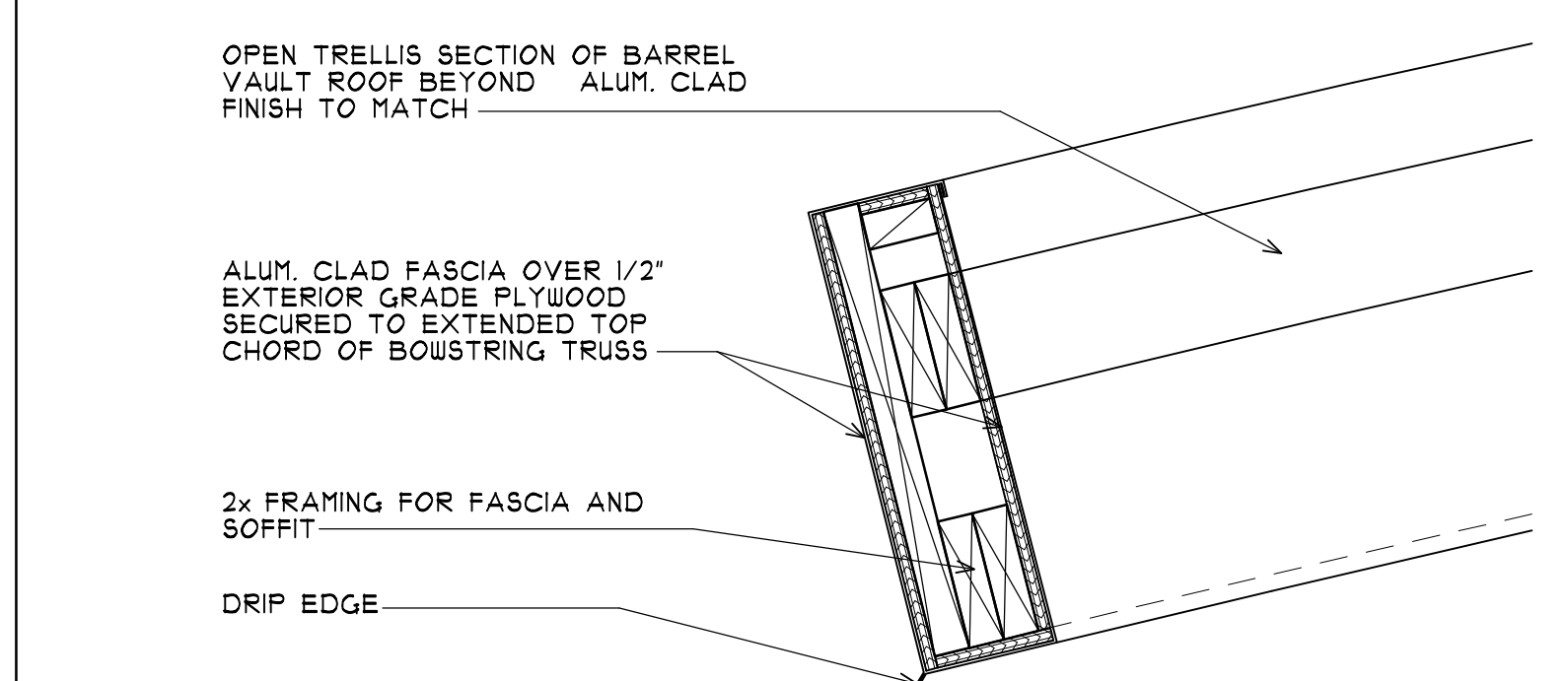
PLOT DATE & TIME: 8/16/2007 9:40 AM
 FILE PATH & NAME: F:\DATA\PROJECTS\MCDONALD'S\M-1000S\M-1032 PORTLAND, ME\ARCHITECTURAL-DRAWINGS\M-1032_A-3-0_SECTIONS



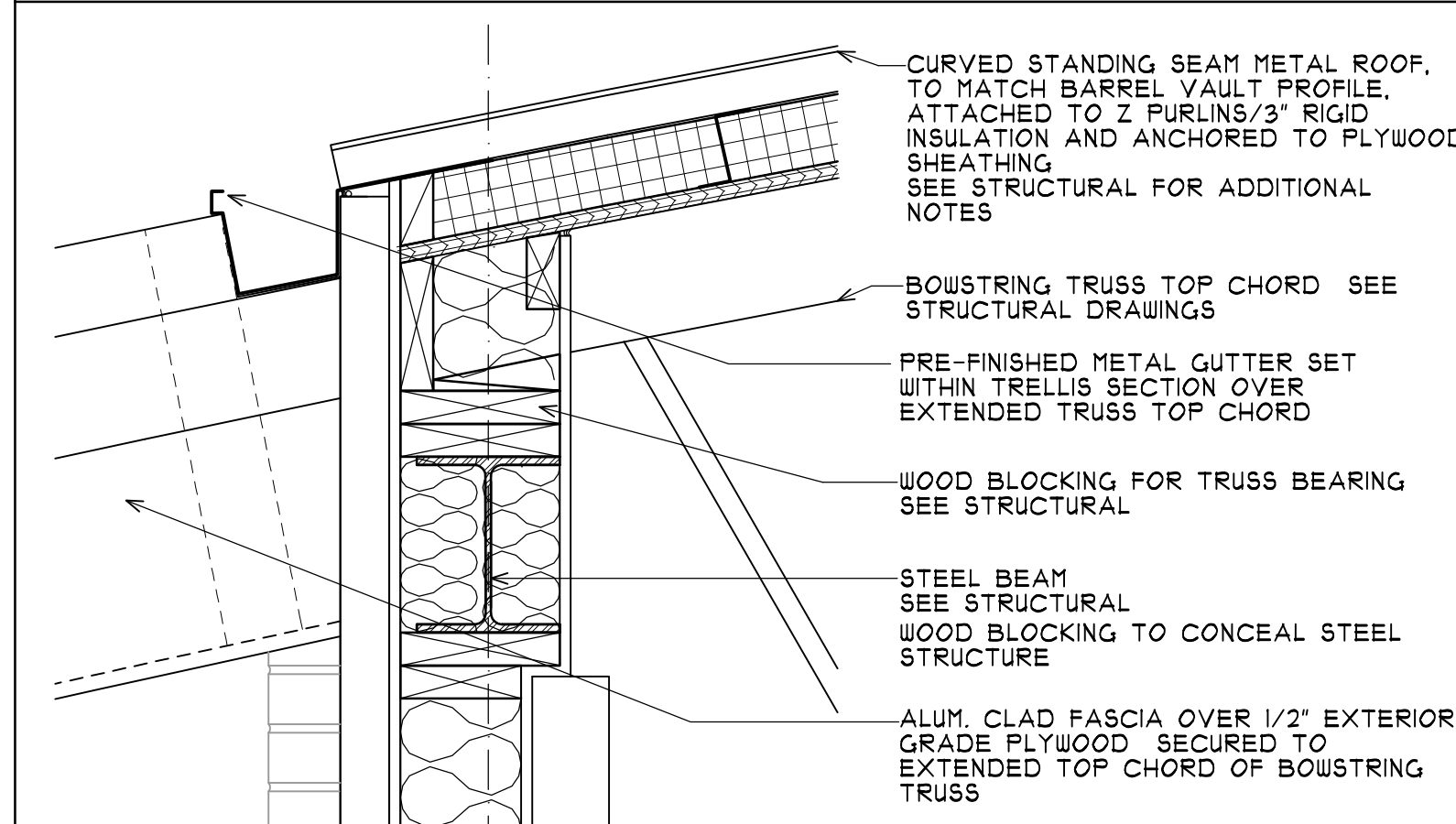
1 WALL SECTION @ PLAYPLACE
 A-3.0 SCALE: 3/4"=1'-0"



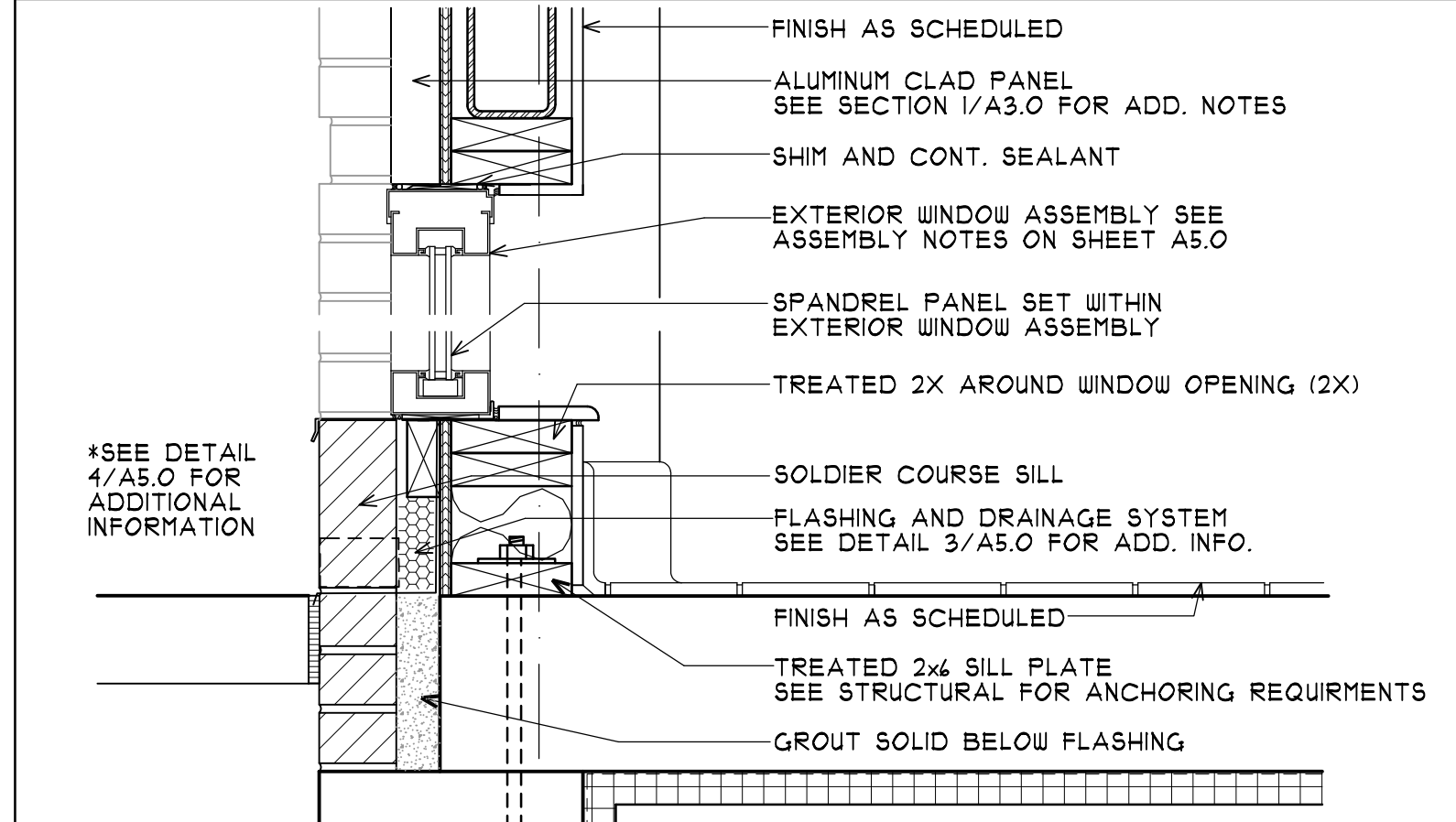
2 WALL SECTION @ PLAYPLACE
 A-3.0 SCALE: 3/4"=1'-0"



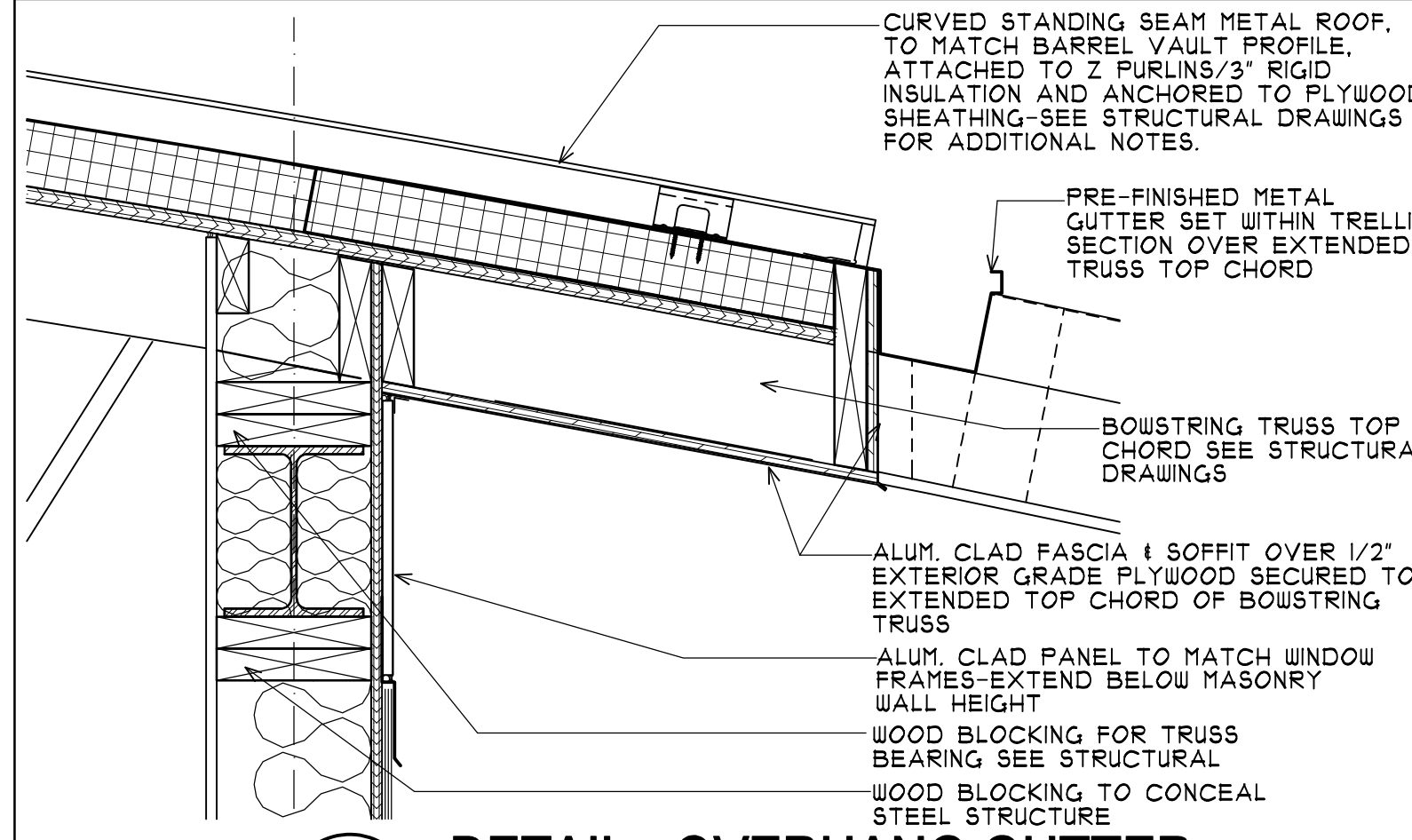
3 DETAIL - FASCIA OVERHANG
 A-3.0 SCALE: 1 1/2"=1'-0"



4 DETAIL - TRUSS BEARING
 A-3.0 SCALE: 1 1/2"=1'-0"



5 DETAIL - ALUMINUM WINDOW
 A-3.0 SCALE: 1 1/2"=1'-0"



6 DETAIL - OVERHANG GUTTER
 A-3.0 SCALE: 1 1/2"=1'-0"

NO.	DATE	REVISIONS
1		
2		
3		
4		
5		
6		
7		

Landry ARCHITECTS
 332 ST. JOHN STREET
 PORTLAND, ME 04101
 TEL: 603.890.6414 FAX: 603.894.4359

DATE ISSUED: 08/14/07
 DATE DRAWN: 04/17/07
 S.A.: T.B.D. SCALE: AS NOTED
 JOB NUMBER: M-1032

CONSULTANT:

WALL SECTIONS AND DETAILS

McDonald's

RESTAURANT LOCATION:
 332 St. John Street
PORTLAND, ME

PREPARED FOR:
McDonald's USA, LLC
 MCDONALD'S PLAZA
 OAK BROOK, ILLINOIS
 60521

SHEET NUMBER:
A-3.0