

GENERAL NOTES

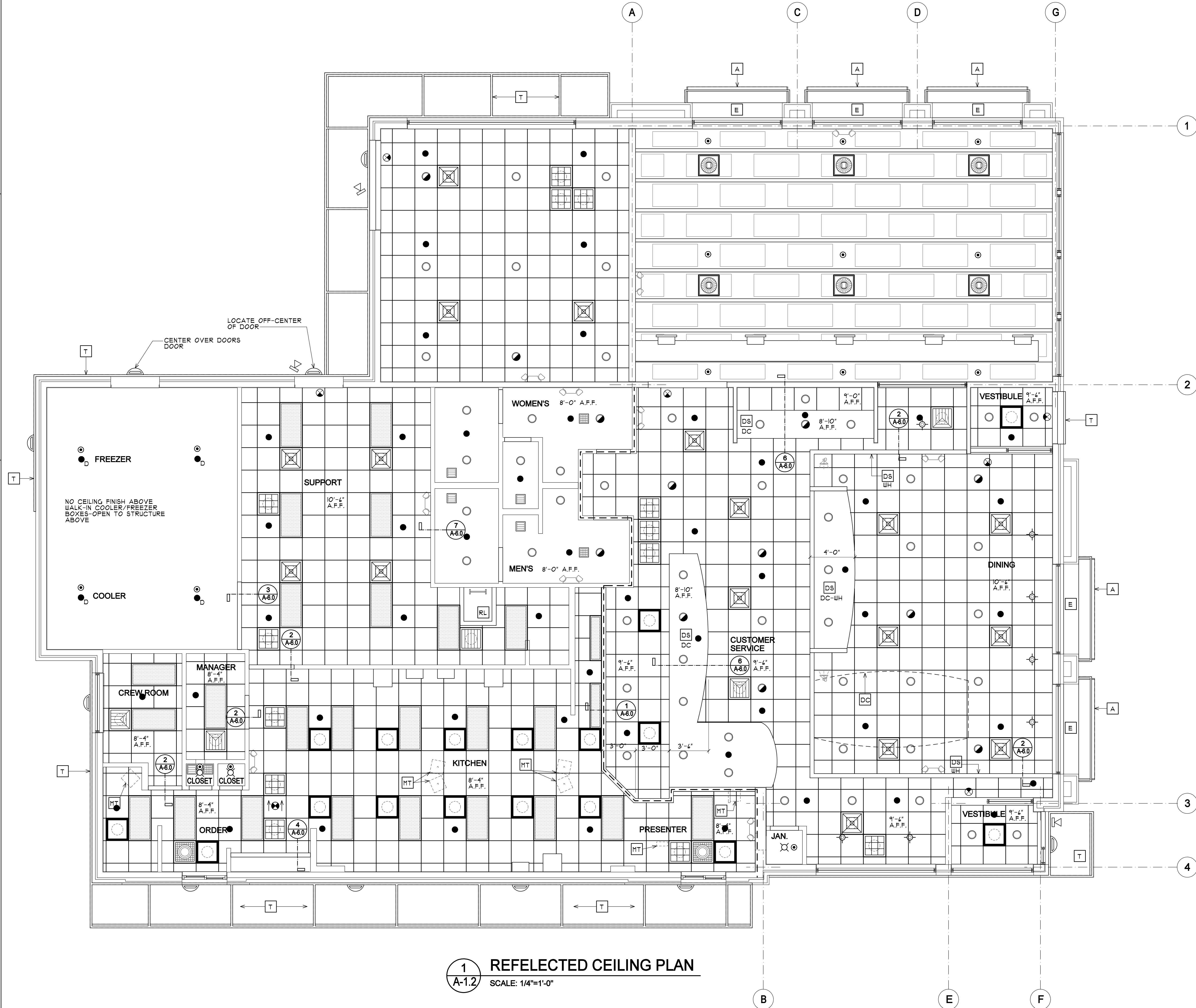
- SEE SHT A4.0 FOR CEILING FINISHES.
- GENERAL CONTRACTOR SHALL COORDINATE HVAC REGISTERS LOCATION WITH MECHANICAL PLANS AND REPORT ANY DISCREPANCIES TO ARCHITECT.

KEY NOTES

- A** METAL AWNING - BY OTHERS
- E** E.I.F.S SOFFIT - SEE EXT. ELEV. & WALL SECTIONS FOR CONSTRUCTION AND FINISHES
- DC** SUSPENDED DECORATIVE CEILING TREATMENT - SEE DECOR DRAWINGS FOR ADDITIONAL INFORMATION.
- DS** DROPPED SOFFIT
- DC-WH** BOTTOM TO ALIGN WITH GYP BD AT EXTERIOR WINDOW HEAD
- MAY BE REPLACED BY ELEMENT BY DECOR SUPPLIER - CONFIRM WITH MCD PROJECT MANAGER
- MB** MENU BOARD WITH BEZELS BY OTHERS UNDER SEPERATE PERMIT - SEE ELEC PLANS
- MT** CEILING MOUNTED MONITOR:
A) VERIFY MONITOR LOCATIONS WITH MCDONALD'S PROJECT MANAGER PRIOR TO INSTALLATION.
B) SEE DETAIL 5/A&O FOR INSTALLATION METHOD
- RL** ROOF LADDER OPENING
- T** TRELLIS SYSTEM
SEE 4/A&O FOR NOTES
SEE ROOF PLAN FOR DIMENSIONS

SYMBOL LEGEND

- PERFORATED FACE SUPPLY DIFFUSER
- 2-WAY SUPPLY AIR DIFFUSER
- 2-WAY SUPPLY AIR DIFFUSER
- 3-WAY SUPPLY AIR DIFFUSER
- 4-WAY SUPPLY AIR DIFFUSER
- RETURN AIR
- EXHAUST FAN
- SUPPLY DIFFUSER
- RECESSED FLUORESCENT 2x4 LIGHT FIXTURE
- RECESSED FLUORESCENT 1x4 LIGHT FIXTURE
- CLG. MTD. FLUORESCENT 1x4 LIGHT FIXTURE
- PENDANT DOWN LIGHT
- INCANDESCENT LIGHT
- RECESSED DOWN LIGHT
- EXIT SIGN W/ EMERGENCY BATTERY BACK-UP
- EMERGENCY LIGHTING COORDINATE W/ ELECTRICAL DRAWINGS
- EXTERIOR WALL SCONCE
- DRAFTSTOP
- PENDANT SPRINKLER HEAD
- UPRIGHT SPRINKLER HEAD
- DRY PENDANT SPRINKLER HEAD



1 REFLECTED CEILING PLAN
A-1.2 SCALE: 1/4"=1'-0"

PLOT DATE & TIME: 8/16/2007 2:03 PM
 FILE PATH & NAME: F:\DATA\PROJECTS\MCDONALD'S\M-1000S\M-1032 PORTLAND, ME\ARCHITECTURAL-DRAWINGS\M-1032_A-1-2_RCP

NO.	DATE	REVISIONS	BY
1			
2			
3			
4			
5			
6			
7			

Landry ARCHITECTS
 603.890.6414
 603.894.4359
 www.landryarchitects.com

DATE ISSUED: 08/14/07
 AS NOTED
 M-1032

DATE DRAWN: 04/17/07
 JOB NUMBER:
 S.A. T.B.D. SCALE: AS NOTED
 DRAWN BY: DATE DRAWN:

CONSULTANT:

SHEET TITLE: REFLECTED CEILING PLAN AND NOTES

McDonald's

RESTAURANT LOCATION:
 332 St. John Street
PORTLAND, ME

PREPARED FOR:
McDonald's USA, LLC
 MCDONALD'S PLAZA
 OAK BROOK, ILLINOIS
 60521

SHEET NUMBER:
A-1.2