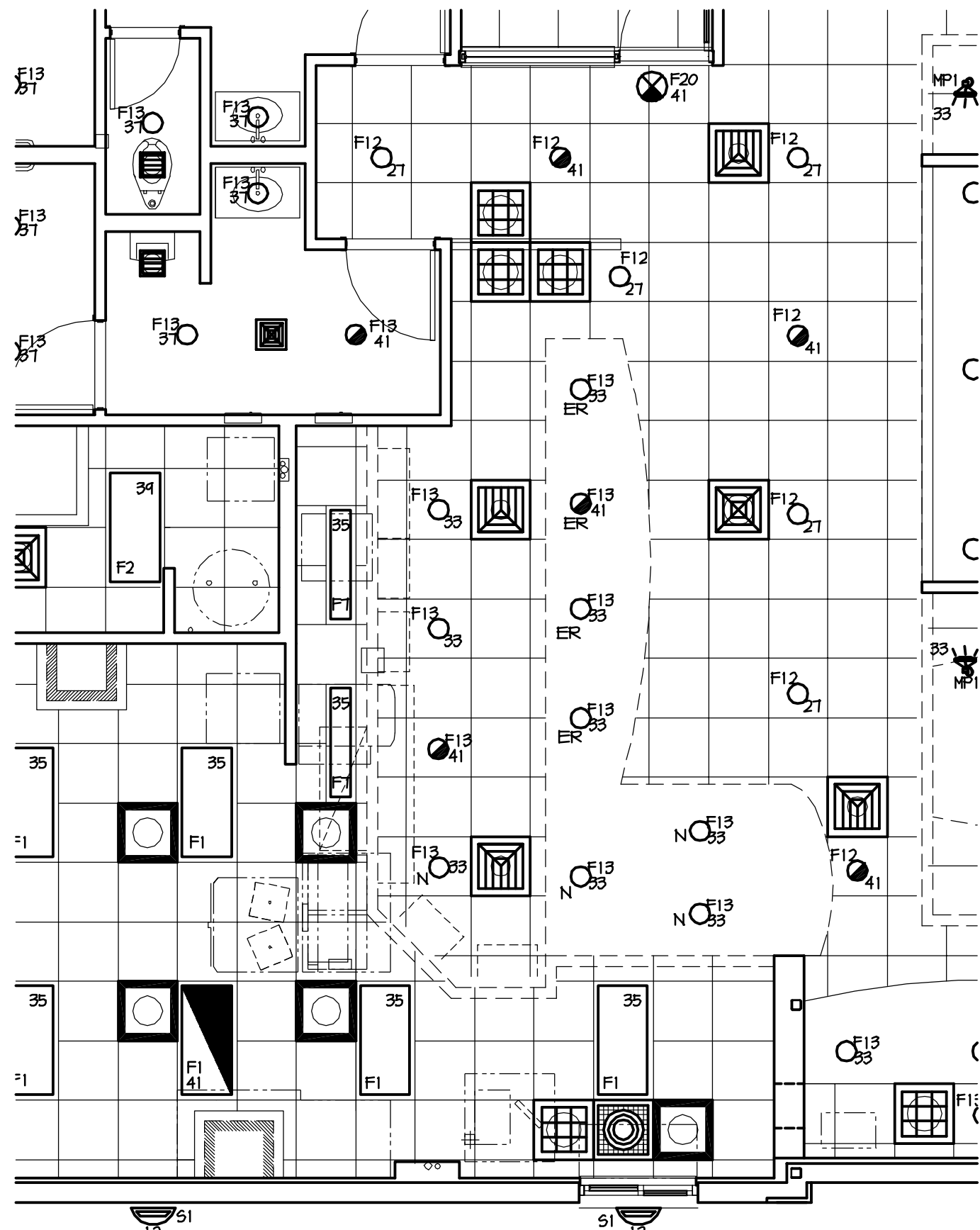
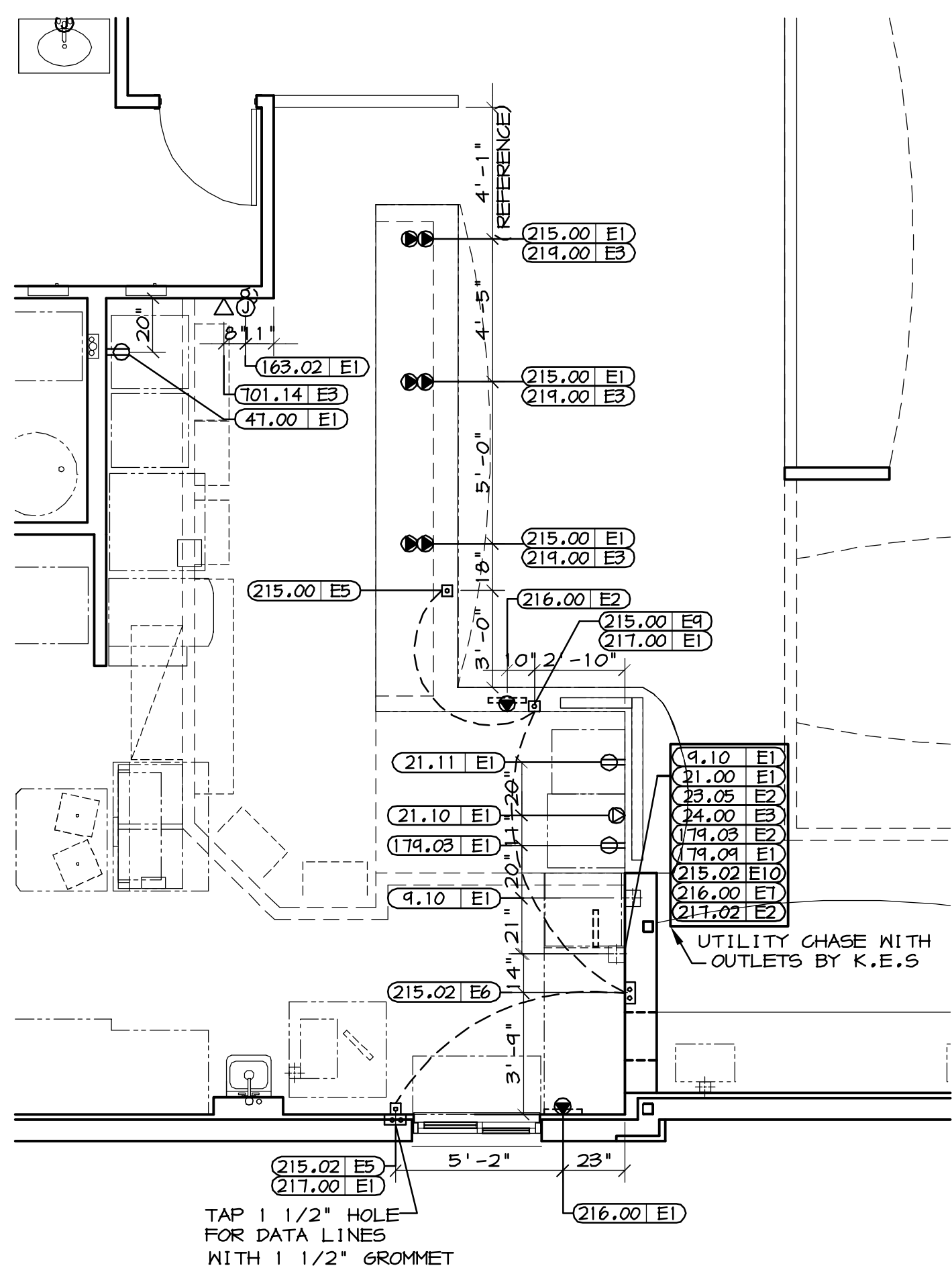


2 LOCATION FOR TEA BREWER
E-CBI 1/4" = 1'-0"



3 ELECTRICAL ROUGH-IN PLAN
E-CBI 1/4" = 1'-0"

LEGEND
N=NEW
ER=EXISTING TO REMAIN
RE=RELOCATED



1 ELECTRICAL ROUGH-IN PLAN
E-CBI 1/4" = 1'-0"

OVERALL IMPACT TO ELECTRICAL DISTRIBUTION SYSTEM

THE TOTAL COMBINED CONNECTED LOAD OF ALL NEW EQUIPMENT DOES NOT EXCEED 36 AMPS AND DEMAND LOAD DOES EXCEED 24 AMPS. CONNECT NEW (CBI) CIRCUITS TO PANEL AP-3 WHEN SPACE IS AVAILABLE.

LIGHTING FIXTURE SCHEDULE:

MARK	SYMBOL	DESCRIPTION	DIFFUSER	WATTS	LAMPS TYPE	BALLAST	MOUNTING	LOCATION	MANUFACTURER AND CATALOG NUMBER
F1	[Symbol]	2' X 4' GRID FLUORESCENT	PRISMATIC ACRYLIC	4-32	F32T8/3500K LOW MERCURY	ELECTRONIC	RECESSED	KITCHEN & DINING	SECURITY LIGHTING: R243BLN120 WITH WHIP AND LAMPS
F2	[Symbol]	2' X 4' GRID FLUORESCENT	PRISMATIC ACRYLIC	3-32	F32T8/3500K LOW MERCURY	ELECTRONIC	RECESSED	SUPPORT & DINING	SECURITY LIGHTING: R243BLN120 WITH WHIP AND LAMPS
F7	[Symbol]	1' X 4' GRID FLUORESCENT	PRISMATIC ACRYLIC	2-32	F32T8/3500K LOW MERCURY	ELECTRONIC	RECESSED	SUPPORT & DINING	SECURITY LIGHTING # R142BLN120 WITH WHIP AND LAMPS
F12	[Symbol]	COMPACT FLUORESCENT DOWN LIGHT	8" SPECULAR CLEAR REFLECTOR	2-26W	PLT26W/3500K QUAD TUBE LOW MERCURY	ELECTRONIC	RECESSED	DINING	SECURITY LIGHTING # D4226E120/4490W
F12A	[Symbol]	COMPACT FLUORESCENT WALL WASH LIGHT	8" SPECULAR CLEAR REFLECTOR	2-26W	PLT26W/3500K QUAD TUBE LOW MERCURY	ELECTRONIC	RECESSED	DINING	SECURITY LIGHTING # W8226E120/4480W
F13	[Symbol]	COMPACT FLUORESCENT DOWN LIGHT WITH LENS	8" SPECULAR W/ LENS, SEE CATALOG #	2-26W	PLT26W/3500K QUAD TUBE LOW MERCURY	ELECTRONIC	RECESSED	DINING	SECURITY LIGHTING # D4226E120/4470W WITH ACRYLIC LENS (FRONT COUNTER ONLY)
F20	[Symbol]	EXIT SIGN WITH BATTERY BACKUP	-	1.8	-	-	SURFACE	-	SECURITY LIGHTING: PRB. SEE NOTE LS2 ON THIS SHEET.
F21	[Symbol]	2 HEADED EMERGENCY BATTERY LIGHT	POLY-CARBONATE	2-5	T-5 TUNGSTEN	-	SURFACE TO WALL OR CEILING	REST ROOM & PLAY PLACE	SECURITY LTG. #PE6
F22	[Symbol]	2 HEADED EMERG LIGHT & 1 REMOTE HEAD IF REQ'D	SEALED GLASS	3-5	T-5 TUNGSTEN & NEMA 3R	-	SURFACE TO WALL OR SOFFIT	OUTDOOR NEAR ENTRANCE CLOSETS	SECURITY LIGHTING #PE6-25-2R61- A6H6A/MPMP1 WHEN CONNECTED TO A REMOTE HEAD (FOR SINGLE GANG JUNCTION BOX)
F26	[Symbol]	PORCELAIN INCANDESCENT SOCKET	GLASS & WIRE GUARD	UP TO 1-60W	A19	-	SURFACE	-	SECURITY LIGHTING ZYC-100TM
P1	[Symbol]	PENDANT FIXTURE	-	UP TO 1-60W	A19	-	SURFACE	DINING	EXACT FIXTURE TYPE TO BE COORDINATED WITH DECOR FIRM & ACM
MP1	[Symbol]	ARCHITECTURAL SERIES GIMBAL RING	-	75W	PAR 30 FLOOD LAMP	-	MONOPOINT MOUNTING	DINING	FIXTURE TYPE TO BE COORDINATED WITH DECOR FIRM & ACM; HTA130NH/AK-T-MP (MONOPOINT)

TAG #	QTY	DESCRIPTION	VOLT/PH	FLA	BRK SIZE	COND/WIRE	INL/CCT	RECEP TYPE	HST AFF	REQUIREMENTS & REMARKS
004.10E1	2	UTILITY CHASE - D/T PRESENTER'S BOOTH	SEE RMK	SEE RMK	SEE RMK	-	-	-	SEE RMK	UTILITY CHASE AND RECEPTABLES PROVIDED BY K.E.S.
021.00E1	1	COFFEE BREWER (GLASS DECANTERS)	120-208/1	18.9	20A	1/2"C-2#12	AP-11(14,16)-Existing	L14-20R	3'-10"	-
021.11E1	1	SPECIALTY COFFEE	208/1	28.8	30A	1/2"C-2#10	AP-3(31,33)-New	L14-30R	2'-3"	-
021.11E1	1	SMOOTHIE MACHINE	120/1	15.0	20A	1/2"C-2#12	AP-3(31)-New	5-20R	2'-3"	-
023.05E2	1	COFFEE CREAM DISPENSER	120/1	1.2	20A	1/2"C-2#12	AP-3(13)-Existing	5-20R BY KE	SEE RMK	EC TO EXTEND CIRCUIT TO APPROPRIATE RECEPTACLE IN CHASE #4.10
024.00E3	1	ORANGE JUICE DISPENSER	120/1	9.43	20A	1/2"C-2#12	AP-11(2)-Existing	5-20R BY KE	SEE RMK	EC TO EXTEND CIRCUIT TO APPROPRIATE RECEPTACLE IN CHASE #4.10
025.02E1	2	ICED TEA BREWER & PORTABLE SERVER	120/1	15.0	20A	1/2"C-2#12	AP-3(34,35)-New	5-20R	2'-3"	SEE GENERAL NOTE 1 THIS SHEET
025.02E2	2	ICED TEA BREWER & PORTABLE SERVER	120/1	15.0	20A	1/2"C-2#12	AP-3(34,35)-New	J.B.	2'-0"	FOR WATER LINE TO ICED TEA BREWER IF CHASE IS NOT SPECIFIED. (SEE P1)
047.00E1	1	SALAD CASE - FULL HEIGHT	120/1	5.5	20A	1/2"C-2#12	AP-2(3)-Relocate existing	5-20R	2'-0"	-
163.02E1	1	REMOTE ANSUL FULL	-	-	-	-	-	J.B.	SEE DETAILS	4" OCTAGONAL, RAGO #165 OR EQUAL MUST BE USED, IF FLUSH MTD, MUST PROJECT 1/4" TO 5/16" PAST FIN. WALL
174.03E1	1	REFRIGERATOR - UNDERCOUNTER	120/1	4.0	20A	1/2"C-2#12	AP-2(36)	5-20R	2'-0"	-
174.03E2	1	REFRIGERATOR - UNDERCOUNTER	120/1	4.0	20A	1/2"C-2#12	AP-1(5)-Existing	5-20R BY KE	SEE RMK	EC TO EXTEND CIRCUIT TO APPROPRIATE RECEPTACLE IN CHASE #4.10
174.04E1	1	REFRIGERATOR - WALL/DOORLESS	120/1	-	20A	1/2"C-2#12	AP-1(24)-Existing	-	SEE RMK	EC TO EXTEND CIRCUIT TO APPROPRIATE RECEPTACLE IN CHASE #4.10
215.00E1	3	POS PC HARDWARE - FRONT COUNTER	120/1 ISOLATED	9.0 EA.	20A	1/2"C-2#12	CP14-Existing(relocated)	64700	2'-0"	EC TO RUN 1/2" COND IN WALL FOR FLUSH MTD SPCL. RECFP FOR KEYSTATIONS (MONITOR,CPU,CASH DRAWERS)
215.00E5	1	POS PC HARDWARE - FRONT COUNTER	DATA CABLE	-	-	-	Existing(relocated)	4x4x4 PB	1'-6"	EXTEND 2 1/2" CONDUITS UNDER SLAB TO 215.00E9 FOR POS DATA CABLES
215.00E9	1	POS PC HARDWARE - BEVERAGE COUNTER	DATA CABLE	-	-	-	-	4x4x4 PB	1'-6"	EXTEND 2 1/2" CONDUIT UNDER SLAB FOR MONITOR
215.02E10	2	POS PC HARDWARE - 2 BOOTH D/T	120/1 ISOLATED	2.2 EA.	20A	1/2"C-2#12	CP18-Existing	164700 BY K	SEE RMK	EC TO EXTEND CIRCUIT TO APPROPRIATE RECEPTACLE IN CHASE #4.10
215.02E5	1	POS PC HARDWARE - 2 BOOTH D/T	-	-	-	-	-	Existing	8x6x4 PB	10'
215.02E6	1	POS PC HARDWARE - 2 BOOTH D/T	-	-	-	-	-	Existing	8x6x4 PB	3'-5"
216.00E1	3	POS - VIDEO MONITOR N/SUPPORTS	120/1 ISOLATED	1.5 EA.	SEE RMK	1/2"C-2#12	SEE REMARKS-existing Relocated	164700	SEE RMK	EXTEND 2 1/2" C. UNDER SLAB TO 215.02E5, 2 1/2" C. TO ABOVE CEILING AND 2 1/2" C. TO 215.02E3
216.00E2	1	POS - VIDEO MONITOR N/SUPPORTS	DATA CABLE	-	-	-	Existing	-	CL6	MONITOR LOCATED ON COUNTER TOP, CABLE FURNISHED AND INSTALLED BY POS INSTALLER.
216.00E7	1	POS - VIDEO MONITOR N/SUPPORTS	120/1 ISOLATED	1.5 EA.	SEE RMK	1/2"C-2#12	CP18-Existing	164700 BY K	SEE RMK	EC TO EXTEND CIRCUIT TO APPROPRIATE RECEPTACLE IN CHASE #4.10
217.00E1	2	PARK/ROTATE/SERVE BUMP BAR	DATA CABLE	-	-	-	Existing	4x4x4 PB	4'-0"	2" CONDUIT TO 215.02E6 FOR 3 BOOTH, 215.02E5 FOR 2 BOOTH, OR 215.01E4 FOR 1 BOOTH DRIVE-THRU
217.02E2	2	DRIVE-THRU CAMERA & MONITOR SYSTEM	120/1	1.0	20A	1/2"C-2#12	AP-2(14)-Existing	5-20R BY KE	SEE RMK	EC TO EXTEND CIRCUIT TO APPROPRIATE RECEPTACLE IN CHASE #4.10
219.00E3	3	POS - RECEIPT PRINTER/CASHLESS	120/1 ISOLATED	0.7	20A	1/2"C-2#12	CP14, 8 SEE RMK-existing Relocated	164700	2'-0"	FOR RECEIPT LOCATED IN FRONT COUNTER POWER FROM CP14 IN PRESENTER'S BOOTH CP18
T01.14E3	1	TELEPHONE	PHONE HANDY BOX	-	-	-	-	RJ-11C JACK	3'-4"	-

SYMBOLS AND ABBREVIATIONS

SYMBOL	DESCRIPTION	SYMBOL	DESCRIPTION
[Symbol]	SINGLE POLE SWITCH, 3W=THREE WAY SWITCH, K=KEYED SWITCHED	[Symbol]	BUZZER
[Symbol]	TRANSFORMER	[Symbol]	BUTTON FOR BUZZER
[Symbol]	JB WITH DUPLEX CONVENIENCE OUTLET (CEILING MOUNTED)	[Symbol]	PULLBOX
[Symbol]	JB WITH SINGLE CONVENIENCE OUTLET	[Symbol]	PANELBOARD
[Symbol]	JB WITH DUPLEX CONVENIENCE OUTLET	[Symbol]	CIRCUIT BREAKER
[Symbol]	JB WITH TWO DUPLEX CONVENIENCE OUTLETS	[Symbol]	J-BOX WITH FINAL EQUIPMENT CONNECTION
[Symbol]	JB WITH FLUSH FLOOR MOUNTED OUTLET	[Symbol]	A
[Symbol]	JB WITH SPECIAL PURPOSE OUTLET	[Symbol]	ACM
[Symbol]	JB WITH ISOLATED GROUND OUTLET	[Symbol]	AFF
[Symbol]	[Symbol]	[Symbol]	C
[Symbol]	[Symbol]	[Symbol]	CCT
[Symbol]	[Symbol]	[Symbol]	EC
[Symbol]	[Symbol]	[Symbol]	GC
[Symbol]	[Symbol]	[Symbol]	GF1/GFCI
[Symbol]	[Symbol]	[Symbol]	GRD
[Symbol]	[Symbol]	[Symbol]	I6
[Symbol]	[Symbol]	[Symbol]	JB
[Symbol]	[Symbol]	[Symbol]	KES
[Symbol]	[Symbol]	[Symbol]	MLO
[Symbol]	[Symbol]	[Symbol]	MP

DRAWN BY: TSN/AD
DATE: MAR 2007
REVIEWED BY: RDS/TEAH
DATE: MAR 2007

SITE ADDRESS: XXX-XXX

TITLE: E-CBI FLOOR PLAN

PROJECT: CRITERIA BUILDING

STANDARD: 2006-4510

PACKAGE: 00-0000.00.0

DESCRIPTION: 9" CAU BEARING WALLS

DATE: 00-0000.00.0

SITE: XXX-XXX

DESCRIPTION: XXX-XXX

DATE: XXX-XXX

BY: XXX-XXX

K:\DIV\STANDARD BUILDINGS\2007\CBI DESIGN CRITERIA PACKAGE\4997-MS-4597MS-EGBI.DWG 03-21-2007 12:10

PREPARED BY: McDonald's USA, LLC

McDonald's USA, LLC

These drawings and specifications are the confidential and proprietary property of McDonald's USA, LLC and shall not be copied or reproduced without the prior written consent of McDonald's USA, LLC. Use of these drawings for reference or for any other project requires the written consent of McDonald's USA, LLC. The contract documents for this project supersede all other drawings and specifications for this project.