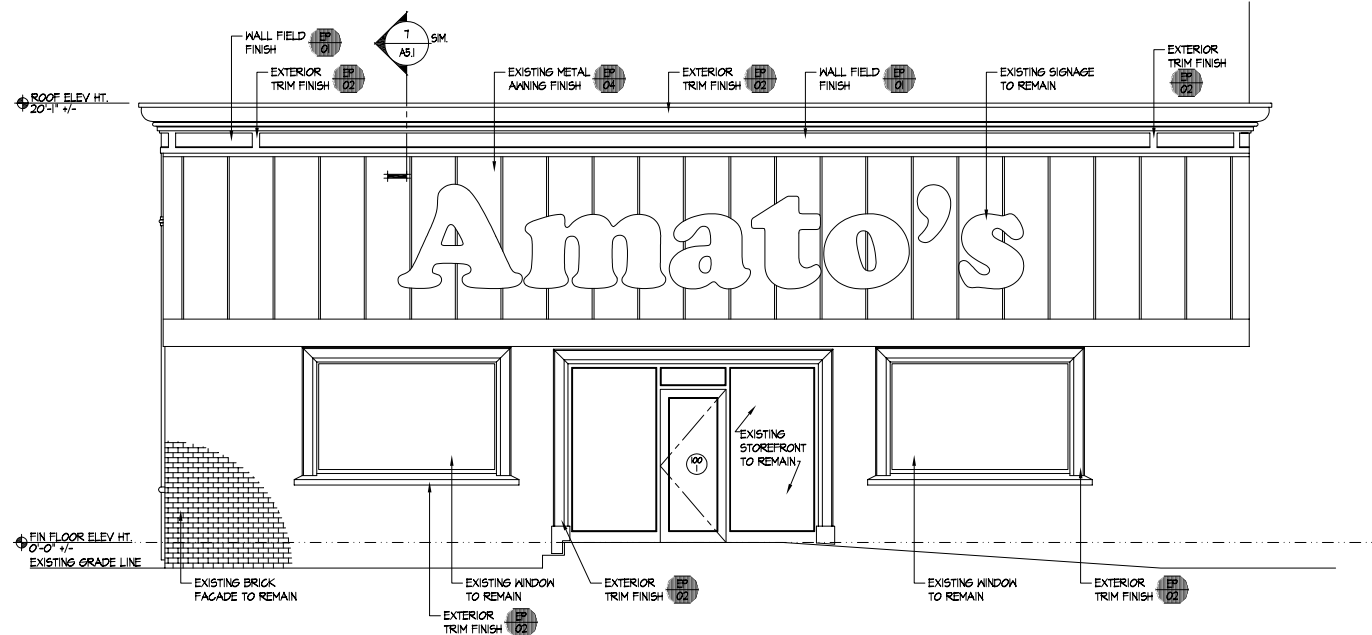


1 ELEVATION: SIDE EXTERIOR
A5.1 SCALE: 1/4"=1'-0"



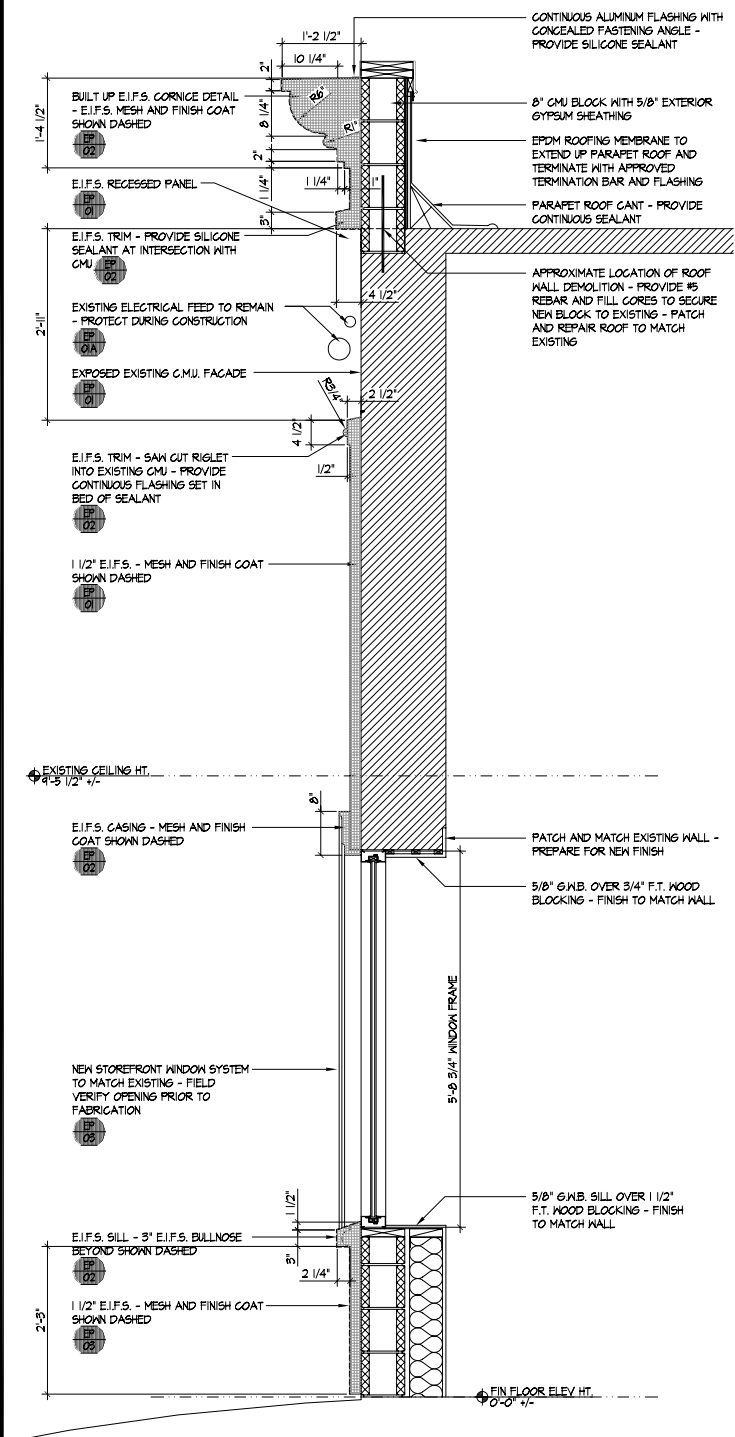
3 ELEVATION: FRONT EXTERIOR
A5.1 SCALE: 1/4"=1'-0"

DOOR NOTES:

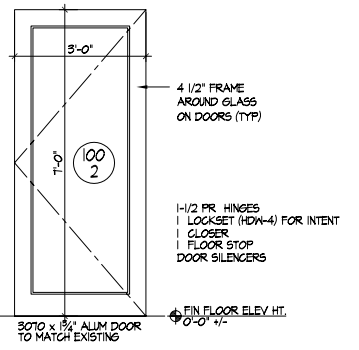
1. DOOR & DOOR HARDWARE
QUALITY LEVEL: COMMERCIAL
REFER TO SHOP DRAWINGS FOR ALL DOOR HARDWARE SETS, MATERIAL FINISHES AND SPECIFIC REQUIREMENTS FOR KEYING.
2. ALL HARDWARE, AS FAR AS PRACTICAL, SHALL BE ONE MANUFACTURER'S MAKE, UNLESS OTHERWISE NOTED. COORDINATE WITH THE OWNER FOR MANUFACTURERS OR COMPATIBLE ALTERNATE. THE CONTRACTOR SHALL SUBMIT TO THE ARCHITECT AND OWNER A LIST OF ALL FINISH AND OPERATING HARDWARE, CATALOG NUMBER AND DESCRIPTION. HARDWARE SCHEDULES SHALL INCLUDE SPECIFICATION NUMBER FOR EACH OPENING.
3. FORWARD HARDWARE TEMPLATES FOR ALL WOOD DOORS TO THE DOOR SUPPLIER FOR PRE-DRILLING.
4. ALL EXTERIOR THRESHOLDS TO BE SET IN FULL MASTIC BED.
5. ALL RATED DOORS SHALL BEAR THE UNDERWRITERS LABORATORY LABEL.
6. IN CASES WHERE DOORS ARE RATED, THE DOOR FRAMES SHALL HAVE THE SAME RATING AS THE DOOR IT SERVES.

WINDOW NOTES:

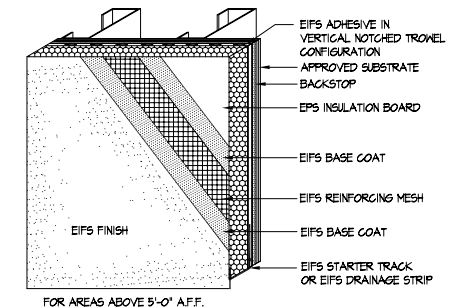
1. WINDOW TYPE
QUALITY LEVEL: COMMERCIAL
REFER TO PROJECT MANUAL FOR TYPE SPECIFICATION AND LIST OF MANUFACTURERS, MATERIAL FINISHES, UNLESS OTHERWISE NOTED.
2. ALL EXTERIOR GLAZING, UNLESS OTHERWISE NOTED, SHALL BE 1/2" CLEAR, TEMPERED INSULATED GLAZING.
3. ALL INTERIOR GLAZING, UNLESS OTHERWISE NOTED, SHALL BE 1/2" CLEAR, TEMPERED GLAZING.
4. PRIOR TO FABRICATION AND INSTALLATION, FIELD VERIFY ROUGH OPENINGS FOR SPECIFIC UNIT SIZES.
5. ALL FRAMES TO BE PAINTED (EP 05)



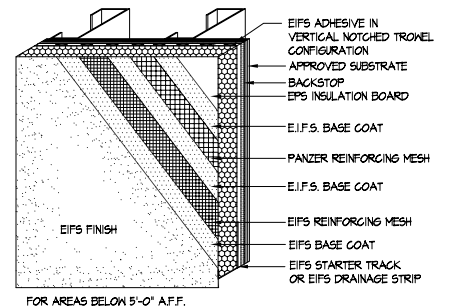
7 DETAILS: E.I.F.S. CASING AT EXISTING WINDOW
A5.1 SCALE: 1 1/2"=1'-0"



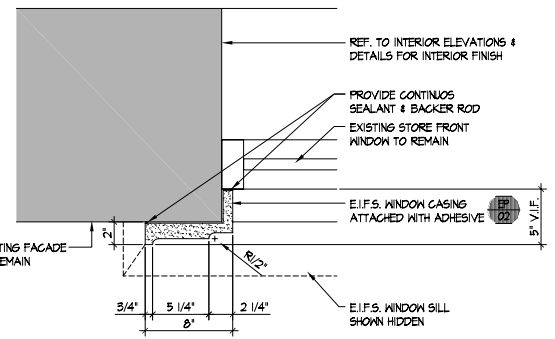
4 ELEVATION: NEW VESTIBULE DOOR
A5.1 SCALE: 1/4"=1'-0"



5 DETAILS: E.I.F.S. SECTIONS
A5.1 SCALE: 1 1/2"=1'-0"



6 DETAILS: E.I.F.S. CASING AT EXISTING WINDOW
A5.1 SCALE: 1 1/2"=1'-0"



CERTIFICATION:
CONSULTANT LOGO:

THIS DRAWING IS A PART OF AN INTEGRATED SET OF CONSTRUCTION CONTRACT DOCUMENTS. REFER TO ALL DRAWINGS AND SPECIFICATIONS INCLUDING BUT NOT LIMITED TO "GENERAL CONDITIONS", "SUMMARY OF WORK" AND ANY APPLICABLE MANUFACTURERS TECHNICAL SPECIFICATIONS.
REFER TO ALL OF THE DRAWINGS FOR COMPLETE SCOPE OF WORK.
THIS DRAWING IS NOT TO BE SCALED AND/OR USED AS AN AS-BUILT.

| REVISIONS | |
|-----------|-------------|
| No. | DESCRIPTION |
| | |
| | |
| | |
| | |

PROJECT NAME:

312 ST. JOHN STREET
PORTLAND, ME

PREPARED BY:

ARCHITECTURAL DESIGN
Jefferson Group Architects, Inc.
700 School Street Unit 2
Pawtucket, RI 02860
Phone: (401) 721-2245 Fax: (401) 721-2238

SHEET TITLE:
EXTERIOR ELEVATIONS,
GENERAL AND
WORKING NOTES

JOB NUMBER: 2005 10
DRAWN BY: MEM/EFS
CHECKED BY: MAP/WJ
DATE ISSUED: Tuesday, August 23, 2005
SCALE: Noted

SHEET NUMBER:
A5.1

ISSUED FOR PERMIT - TUESDAY, AUGUST 23, 2005