

STANDARD ABBREVIATIONS

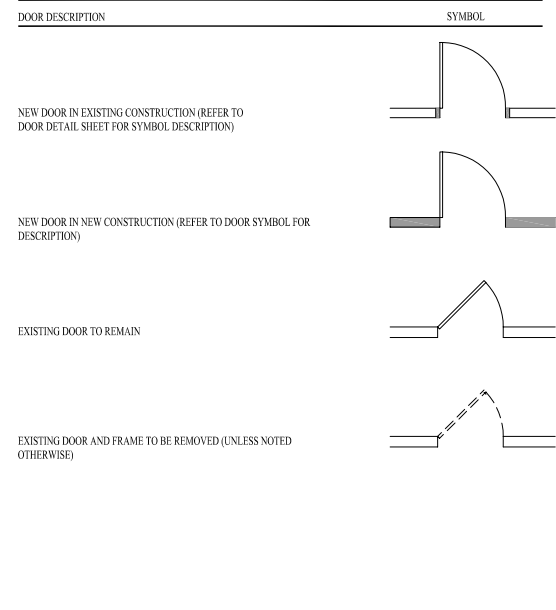
ABBREVIATION	DESCRIPTION	ABBREVIATION	DESCRIPTION	ABBREVIATION	DESCRIPTION	ABBREVIATION	DESCRIPTION
&	AND	EQ	EQUAL	MFG	MANUFACTURE (ER)	RT	RUBBER TILE
<	ANGLE	EQUIP	EQUIPMENT	MRB	MARBLE	RS	RUBBER STONE
@	AT SPACING OF	EXIST	EXISTING	MAS	MASONRY	SFGL	SAFETY GLASS
⊕	CENTER LINE	EXP JT	EXPANSION JOINT	MO	MASONRY OPEN	SCH	SCHEDULE
#	NUMBER	EXT	EXTERIOR	MTL	MATERIAL	SCRN	SCREEN
x	WIDTH x HEIGHT	FOB	FACE OF BLOCK	MAX	MAXIMUM	SCUP	SCUPPER
W/	WITH	FOC	FACE OF CONCRETE	MECH	MECHANIC (AL)	SLNT	SEALANT
AFF	ABOVE FINISH FLOOR	FOF	FACE OF FINISH	MBR	MEMBRANE	STG	SEATING
ADH	ADHESIVE	FOM	FACE OF MASONRY	MTL	METAL	SEC	SECTION
ADJ	ADJUSTABLE	FOS	FACE OF STUDS	MT	METAL THRESHOLD	SS	SERVICE SINK
A/C	AIR CONDITIONER	FAS	FASTEN, FASTENER	MIN	MINIMUM	SHTH	SHEATHING
AFS	ABOVE FINISH SLAB	FBD	FIBERBOARD	MIR	MIRROR	SHT	SHEET
ALUM	ALUMINUM	FGL	FIBERGLASS	MISC	MISCELLANEOUS	SH	SHELF, SHELVING
AB	ANCHOR BOLT	FIN	FINISH	MLD	MOLDING	SHNG	SHINGLE
ARC	ARCHITECT, ARCHITECTURAL	FE	FIRE EXTINGUISHER	MTD	MOUNTED	SHU	SHUTTER
AD	AREA DRAIN	FEC	FIRE EXTINGUISHER CABINET	MTG	MOUNTING	SIDG	SIDING
BL	BASE LINE	FIXT	FIXTURE	MULL	MULLION	SIM	SIMILAR
BSMT	BASEMENT	FLG	FLASHING	NR	NOISE REDUCTION	SK	SINK
BM	BEAM	FLR	FLOOR(ING)	NOM	NOMINAL	SKL	SKYLIGHT
BVL	BEVELED	FD	FLOOR DRAIN	N	NORTH	SLV	SLEEVE
BEY	BEYOND	FLUR	FLUORESCENT	NIC	NOT IN CONTRACT	SLP	SLOPE
BIT	BITUMINOUS	FLJ	FLUSH JOINT	NTS	NOT TO SCALE	SOL	SOLDIER
BLK	BLOCK	FTG	FOOTING	NO	NUMBER	SC	SOLID CORE
BLKG	BLOCKING	FDN	FOUNDATION	OC	ON CENTER	SP	SOUNDPROOF
BRK	BRICK	FR	FRAME (D) (ING)	OP	OPAQUE	S	SOUTH
BS	BOTH SIDES	FS	FULL SIZE	OPG	OPENING	SPEC	SPECIFICATION
BOT	BOTTOM	FUR	FURRED (ING)	OPH	OPPOSITE HAND	SPH	SPLASH
BRD	BOARD	GA	GAGE, GAUGE	OD	OUTSIDE DIAMETER	SQ	SQUARE
BLDG	BUILDING	GV	GALVANIZED	OA	OVERALL	S/S	STAINLESS STEEL
BB	BULLETIN BOARD	GC	GENERAL CONTRACTOR	PNT	PAINT (ED)	STD	STANDARD
CAB	CABINET	GL	GLASS, GLAZING	PNL	PANEL (ING)	STA	STATION
CAN	CANVAS	GLAM	GLUED LAMINATE	PB	PANIC BAR	ST	STEEL
CSMT	CASEMENT	GB	GRAB BAR	PAR	PARALLEL	STOR	STORAGE
CSWK	CASEWORK	GD	GRADE, GRADING	PARP	PARAPET	SF	STOREFRONT
CI	CAST IRON	GRN	GRANITE	PRPT	PARALLEL	STRUCT	STRUCTURAL
CB	CATCH BASIN	GV	GRAVEL	PBD	PARTICLE BOARD	SUBFLR	SUBFLOOR
CLG	CEILING	GRT	GROUT	PART	PARTITION	SUSP	SUSPEND SYSTEM
CHAM	CHAMFER	GRD	GUARD	PERF	PERFORATE (ED)	TKBD	TACK BOARD
CHIM	CHIMNEY	GUT	GUTTER	PLAS	PLASTER	TEL	TELEPHONE
CIR	CIRCLE	GYP	GYPSON	PLA	PLASTIC	TEL	TELEVISION
CLR	CLEAR, CLEARANCE	GWB	GYPSON WALL BOARD	PLAM	PLASTIC LAMINATE	TG	TEMPERED GLASS
CO	CASED OPENING	HC	HANDICAP	PL	PLATE	TIG	TEMPERED, INSULATED GLASS
CLS	CLOSER	HRL	HANDRAIL	PLMG	PLUMBING	TZ	TERRAZZO
CLO	CLOSET	HWD	HARDWOOD	PLYWD	PLYWOOD	THK	THICK (NESS)
COL	COLUMN	HRD	HEADER	PT	POINT	THRES	THRESHOLD
COMB	COMBINATION	HTG	HEATING	PVC	POLYVINYL CHLORIDE	TB	TO BE RELOCATED
COM	COMMON	HVAC	HEATING/VENTILATING/AIR	PCF	POUNDS PER CUBIC FOOT	TBR	TO BE REMOVED
CONC	CONCRETE	COND	CONDITIONING	PLF	POUNDS PER LINEAR FOOT	TBR	TO BE REMOVED
CMU	CONCRETE MASONRY OPENING	COND	CONDITIONING	PSF	POUNDS PER SQUARE FOOT	TPTN	TOILET PARTITION
CONST	CONSTRUCTION	HD	HEAVY DUTY	PSI	POUNDS PER SQUARE INCH	TOL	TOLERANCE
CONT	CONTINUOUS	HT	HEIGHT	PCC	PRECAST CONCRETE	T&G	TONGUE AND GROOVE
CONTR	CONTRACT, CONTRACTOR	HP	HIGH POINT	PREFAB	PREFABRICATE (ED)	T O SL	TOP OF CONCRETE SLAB
CJ	CONTROL JOINT	HCR	HOLLOW CORE	PRF	PREFINISHED	TOJ	TOP OF JOIST
CPR	COPPER	HORIZ	HORIZONTAL	PREM	PREMOLDING	TOP	TOP OF PLATE
COORD	COORDINATE	HB	HOSE BIB	PM	PRESS METAL	TOS	TOP OF STEEL
CG	CORNER GUARD	HR	HOUR	PL	PROPERTY LINE	T O SFRL	TOP OF SUBFLOOR
CORR	CORRUGATED	INCAN	INCANDESCENT	RBT	RABBET	TOW	TOP OF WALL
CNTR	COUNTER	ID	INSIDE DIAMETER	RAD	RADIUS	TOR	TO REMAIN
CS	COUNTERSINK	INS	INSULATE (ED) (ING)	RFT	RAFTER	TB	TOWEL BAR
CRS	COURSE	IGL	INSULATING GLASS	RL	RAIL (ING)	TR	TREAD
C.R.	CURTAIN ROD	INSUL	INSULATION	REC	RECESS (ED)	TYP	TYPICAL
C.TR.	CURTAIN TRACK	INT	INTERIOR	REC	RECEPTOR (ICAL)	UC	UNDERCUT
DRP	DAMPER	INTM	INTERMEDIATE	REF	REFER (ENCE)	UL	UNDERWRITERS LABORATORIES INC.
DP	DAMPPOOFING	INV	INVERT	RFL	REFLECT (ED) (IVE)	UNO	UNLESS NOTED OTHERWISE
DE	DEAD LOAD	JC	JANITOR'S CLOSET	REFRIG	REFRIGERATOR	UR	URINAL
DEM	DEMOLISH, DEMOLITION	JT	JOINT	REG	REGISTER	UTL	UTILITY
DTL	DETAIL	JF	JOINT FILLER	REIN	REINFORCE (ED) (ING)	V-P	V-POINT
DIAG	DIAGONAL	JST	JOIST	RECP	REINFORCED CONCRETE PIPE	VB	VAPOR BARRIER
DIA	DIAMETER	KPL	KICKPLATE	REM	REMOVE	VNR	VENEER
DIM	DIMENSION	KIT	KITCHEN	REQD	REQUIRED	VIF	VERIFY IN FIELD
DSP	DISPENSER	KD	KNOCKDOWN	RES	RESILIENT	VERT	VERTICAL
DR	DOOR	LBL	LABEL	RET	RETURN	VG	VERTICAL GRAIN
DN	DOWN	LAB	LABORATORY	RETA	RETURN AIR	VIN	VINYL
DS	DOWNSPOUT	LAG	LAG BOLT	RVS	REVERSE (SIDE)	VB	VINYL BASE
DTR	DRAPERY TRACK	LAM	LAMINATE (ED)	REV	REVISE (S) (ED)	WSCT	WAINSCOT (TING)
DWR	DRAWER	LAV	LAVATORY	RH	RIGHT HAND	WHTR	WATER HEATER
DWG	DRAWING	LEN	LENGTH	R	RISER	WP	WATERPROOFING
DF	DRINKING FOUNDATION	LT	LIGHT	RVT	RIVET	WR	WATER RESISTANT
DRL	DRINK RAIL	LTL	LINTEL	R&S	ROD & SHELF	WST	WEATHERSTRIP (ING)
EA	EACH	LL	LIVE LOAD	RD	ROOF DRAIN	W	WEST
E	EAST	LOC	LOCATE	RFH	ROOF HATCH	WID	WIDTH, WIDE
ELEC	ELECTRICAL	LPT	LOW POINT	RFG	ROOFING	WIN	WINDOW
EP	ELECTRICAL PANEL			RM	ROOM	W/	WITH
EWC	ELECTRICAL WATER PANEL			RO	ROUGH OPENING	W/O	WITHOUT
ELEV/EL	ELEVATION			ROK	ROWLOCK		
				RB	RUBBER BASE		

INTERIOR ABBREVIATIONS

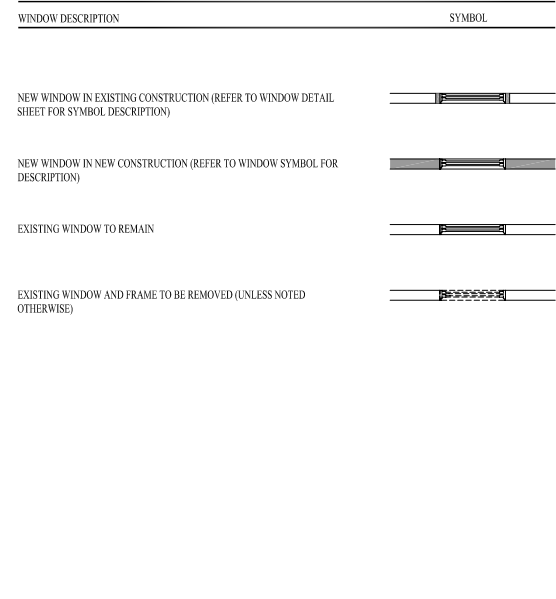
1. INTERIOR ABBREVIATIONS ARE USED IN FINISH SYMBOLS AND SCHEDULES.
2. "#" INDICATES THAT A NUMBER WILL FOLLOW FOR SCHEDULING

ACRONYM	MATERIAL DESCRIPTION	ACRONYM	MATERIAL DESCRIPTION	ACRONYM	FF&E DESCRIPTION	ACRONYM	FF&E DESCRIPTION
AS-#	ASPHALT SHINGLES	MA-#	METAL ACCESSORY	AWN-#	AWNINGS	PF-#	PLUMBING FIXTURES
AMPC-#	ACOUSTICAL METAL PANEL CEILING	MT-#	METAL TILE	ART-#	ARTIFACTS AND FRAMED ART	RBF-#	BOOTHS AND BANQUETS
APC-#	ACOUSTICAL PANEL CEILING	P-#	PAINT	BAR-#	BAR EQUIPMENT	SG-#	STORE SIGN
ATC-#	ACOUSTICAL TILE CEILING	PG-#	PLASTIC GLAZING	BS-#	BLINDS, SHADES & INTERIOR SHUTTERS	TBA-#	TOILET AND BATH ACCESSORY
AWF-#	AWNING FABRIC	RA-#	RESILIENT WALL BASE & ACCESSORIES	CH-#	CABINET HARDWARE	TC-#	TOILET COMPARTMENT
C-#	CARPET	RT-#	RESILIENT FLOOR TILE	DC-#	DRAPERIES AND CURTAINS		
CPT-#	CARPET TILE	S-#	STAIN	BD-#	BEDDING, PILLOW ACCESSORIES, OR TABLE AND FLOOR LAMP		
DG-#	DECORATIVE GLASS	SP-#	SPECIALTY PAINT	FPS-#	FIRE PROTECTION SPECIALTIES		
DST-#	DIMENSION STONE TILE	SSM-#	SOLID SURFACE MATERIAL	FURN-#	FURNITURE MISCELLANEOUS		
EP-#	EXTERIOR PAINT	SVF-#	SHEET VINYL FLOOR COVERING	FURN-#	TABLE AND CHAIRS		
ES-#	EXTERIOR STAIN	SWCP-#	SANITARY WALL AND CEILING PANEL	G-#	GRAPHICS		
F-#	FABRIC	T-#	CERAMIC TILE	HDW-#	DOOR AND WINDOW HARDWARE		
FM-#	ENTRY MAT	TEC-#	TECTUM CEILING	KIT-#	KITCHEN EQUIPMENT		
FT-#	FABRIC TRIM	UP-#	UNIT PAVER	LCKR-#	METAL LOCKER, WOOD LOCKER, OR WALL COVERING		
GB-#	GLASS BLOCK	VF-#	VENEER	WC-#	WALL COVERING		
HB-#	HANDRAIL BRACKET	W-#	WOOD	WDC-#	WOOD CEILING		
ISF-#	INTERIOR STONE FACING	WF-#	WOOD FLOORING	MC-#	MANUFACTURED CASEGOODS		
L-#	HIGH PRESSURE DECORATIVE LAMINATE			MENU-#	MENU SYSTEM		
LMC-#	LINEAR METAL CEILING						

DOOR GRAPHIC SYMBOLS



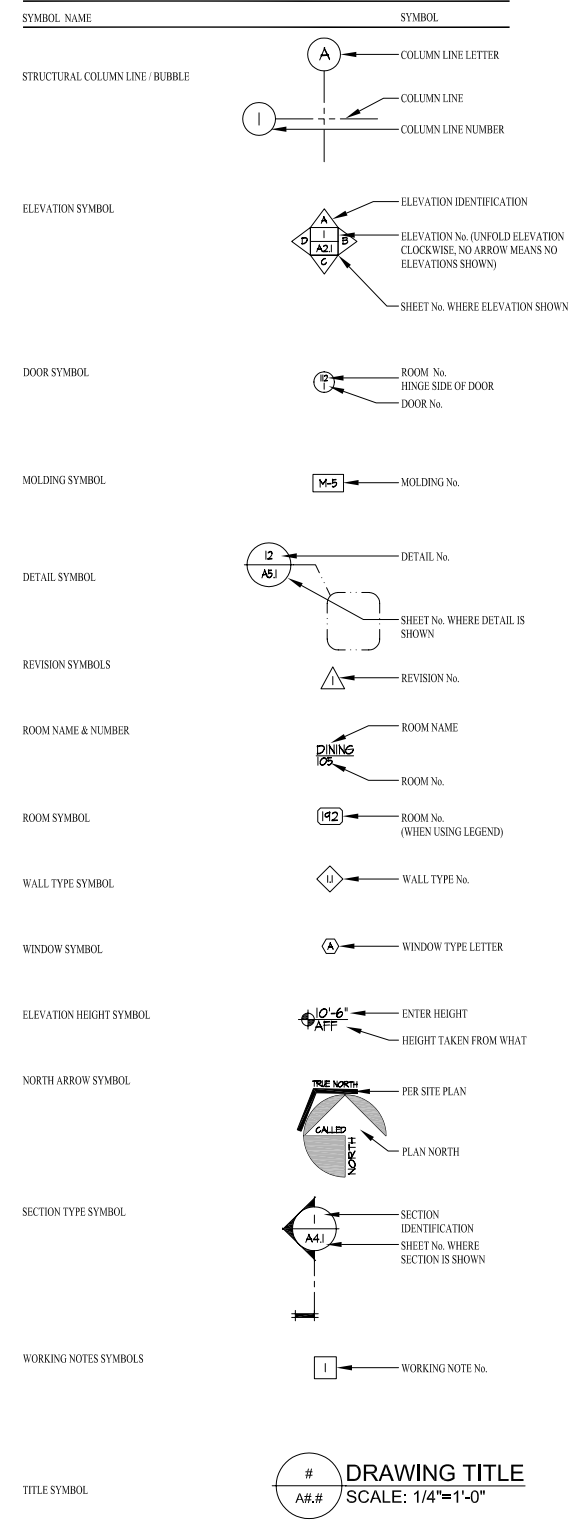
WINDOW GRAPHIC SYMBOLS



MATERIAL LEGEND

SYMBOL NAME	SYMBOL	SYMBOL NAME	SYMBOL
EARTH (UNDISTURBED)	[Symbol]	WOOD ROUGH (CONTINUOUS)	[Symbol]
EARTH (COMPACTED FILL)	[Symbol]	WOOD ROUGHING (BLOCKING)	[Symbol]
CONCRETE	[Symbol]	INSULATION (BLANKET)	[Symbol]
POROUS FILL	[Symbol]	RIGID INSULATION	[Symbol]
BRICK (ELEVATION)	[Symbol]	STRUCTURAL METAL	[Symbol]
CONCRETE MASONRY UNITS	[Symbol]	EXISTING TO REMAIN	[Symbol]
PLYWOOD, MDF OR PARTICLE BOARD AS SPECIFIED ON PLAN	[Symbol]	EXISTING CONDITION TO BE REMOVED	[Symbol]
PLYWOOD, MDF OR PARTICLE BOARD AS SPECIFIED ON PLAN	[Symbol]	NEW WALL	[Symbol]
WOOD FINISH	[Symbol]	KNEEWALL PARTITION (TOP FRAMING PLATE)	[Symbol]

GRAPHIC SYMBOLS



CERTIFICATION:

CONSULTANT LOGO:

THIS DRAWING IS A PART OF AN INTEGRATED SET OF CONSTRUCTION CONTRACT DOCUMENTS. REFER TO ALL DRAWINGS AND SPECIFICATIONS INCLUDING BUT NOT LIMITED TO "GENERAL CONDITIONS", "SUMMARY OF WORK" AND ANY APPLICABLE MANUFACTURERS TECHNICAL SPECIFICATIONS.

REFER TO ALL OF THE DRAWINGS FOR COMPLETE SCOPE OF WORK.

THIS DRAWING IS NOT TO BE SCALED AND/OR USED AS AN AS-BUILT.

REVISIONS

No.	DATE	DESCRIPTION

PROJECT NAME:

312 ST. JOHN STREET  
PORTLAND, ME

PREPARED BY:

**Jefferson Group Architects, Inc.**  
700 School Street Unit 2  
Pawtucket, RI 02860  
Phone: (401) 721-2245 Fax: (401) 721-2238

SHEET TITLE:

**SYMBOLS AND ABBREVIATIONS**

JOB NUMBER: 2005 10

DRAWN BY: MEM

CHECKED BY: MAP/WJJ

DATE ISSUED: Tuesday, August 23, 2005

SCALE: Noted

SHEET NUMBER:

**G1.1**

ISSUED FOR PERMIT - TUESDAY, AUGUST 23, 2005