

**PLANNING / DESIGN ASSOCIATES**

**ENGINEERS / SITE PLANNERS**

**REAL ESTATE DEVELOPMENT CONSULTANTS FOR RESIDENTIAL & COMMERCIAL PROPERTY**

9 ALEXANDER DRIVE, WINDHAM, ME P/F 207-892-2640

**TRANSMITTAL**

DATE: 9.3.2010

TO: MICHAEL DRAMIS

FROM: FRED TAVICO

FAX NO. \_\_\_\_\_

PROJECT: 3 CHERRY ST

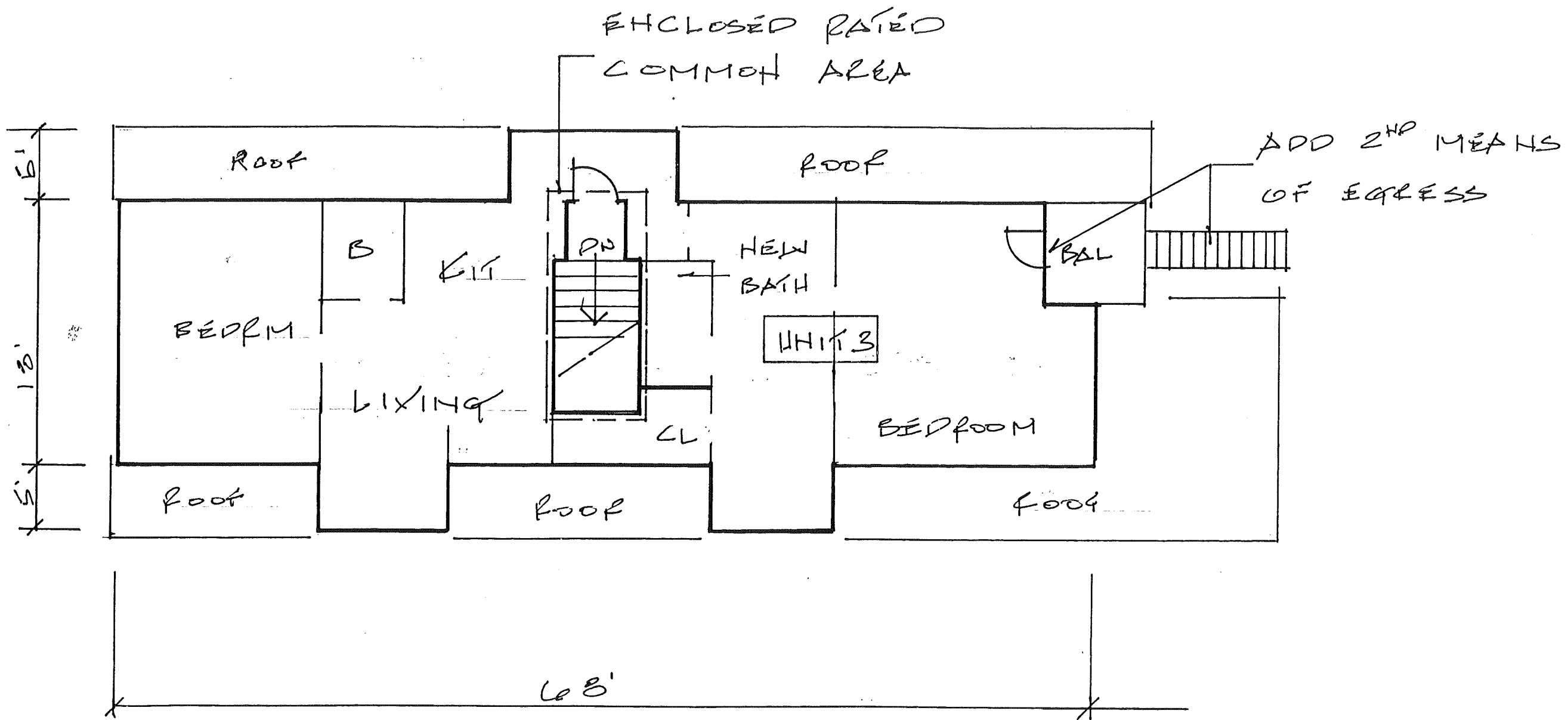
AS REQUESTED  
FOR YOUR INFORMATION  
REPLY REQUESTED **XX**

SKETCH PHASE  
PRELIMINARY PHASE  
FINAL PHASE

SUB/FLOOR PLANS

SINCERELY 

**RECEIVED**  
SEP 10 2010  
Dept. of Building Inspections  
City of Portland Maine

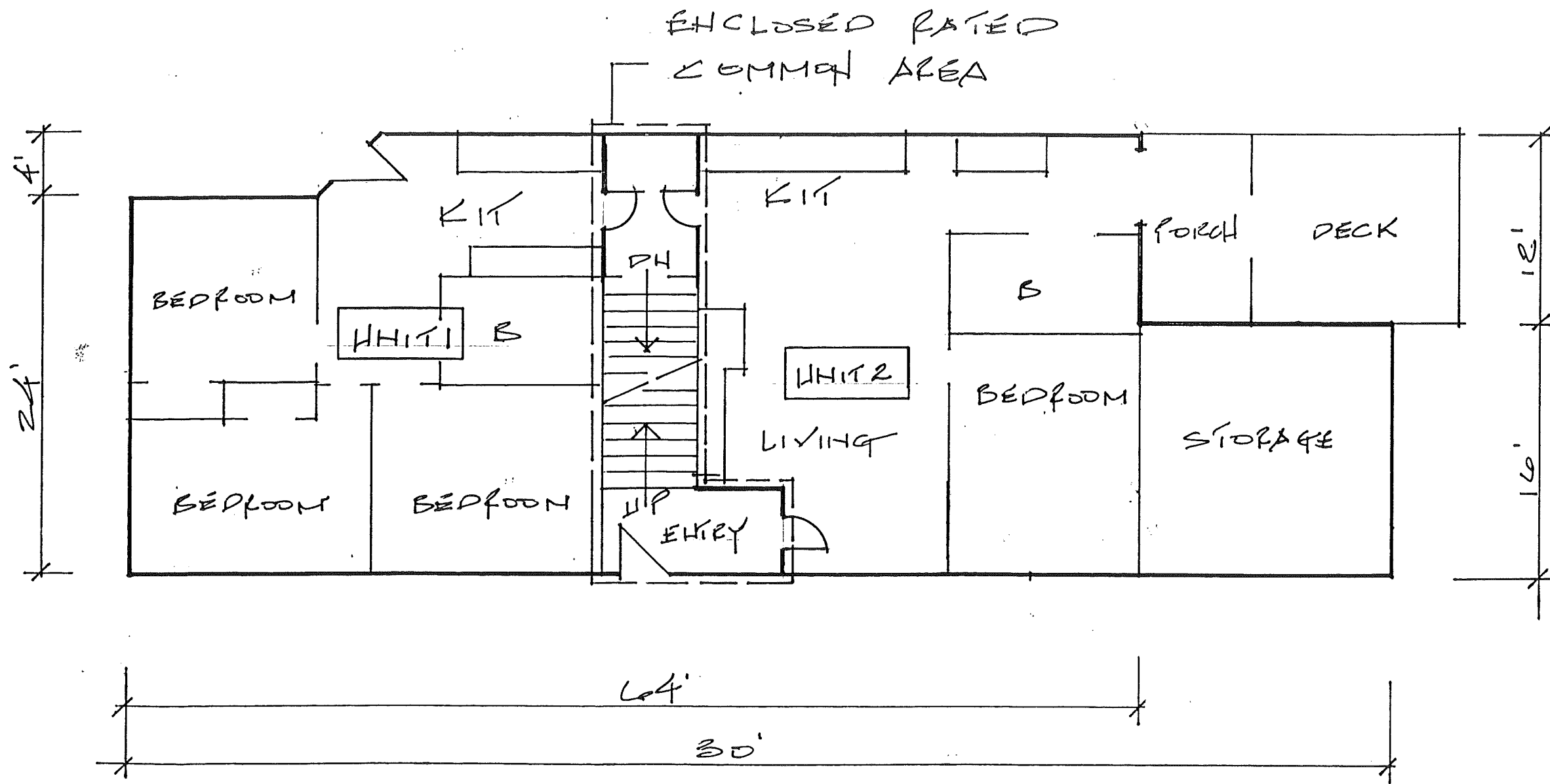


PROPOSED 2<sup>ND</sup> FLOOR PLAN  
1/8"=1'-0"

POSTOLACHE / 3 CHERRY ST PORTLAND, ME

PLANNING / DESIGN ASSOCIATES  
RESIDENTIAL & COMMERCIAL DESIGNERS  
CONSULTING ENGINEERS  
SITE PLANNERS  
REAL ESTATE DEVELOPMENT CONSULTANTS  
9 Alexander Drive, Windham, ME p/f 892-2640

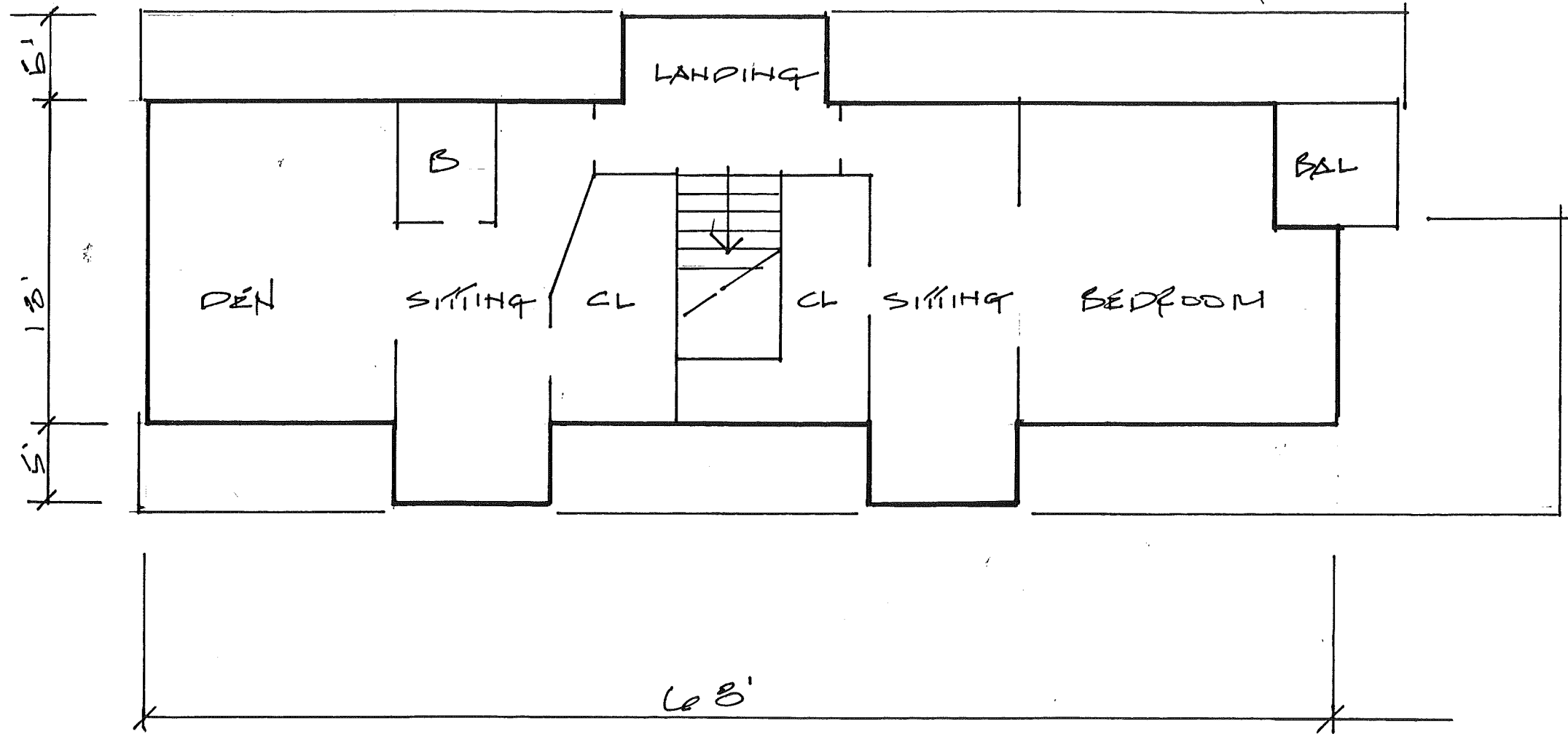
A4



PROPOSED 1ST FLOOR PLAN  
 1/8" = 1' - 0"

POSTOLACHE / 3 CHERRY ST PORTLAND, ME

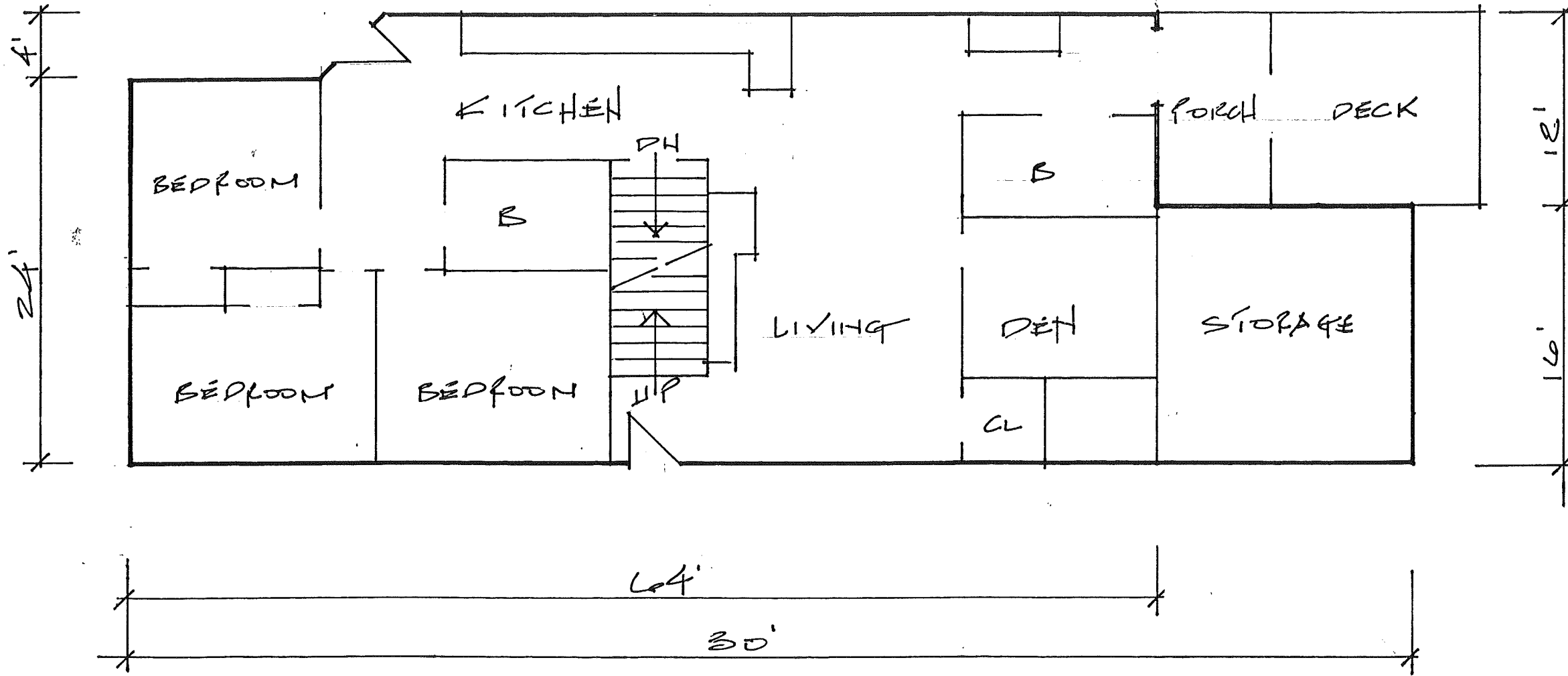
PLANNING / DESIGN ASSOCIATES  
 RESIDENTIAL & COMMERCIAL DESIGNERS  
 CONSULTING ENGINEERS  
 SITE PLANNERS  
 REAL ESTATE DEVELOPMENT CONSULTANTS  
 9 Alexander Drive, Windham, ME pf 892-2640



EXISTING 2<sup>ND</sup> FLOOR PLAN  
 1/8" = 1'-0"

POSTOLACHE / 3 CHERRY ST PORTLAND, ME

PLANNING / DESIGN ASSOCIATES  
 RESIDENTIAL & COMMERCIAL DESIGNERS  
 CONSULTING ENGINEERS  
 SITE PLANNERS  
 REAL ESTATE DEVELOPMENT CONSULTANTS  
 9 Alexander Drive, Windham, ME p/f 892-2640



EXISTING 1ST FLOOR PLAN  
 1/8" = 1'-0"

POSTOLACHE / 3 CHERRY ST PORTLAND, ME

PLANNING / DESIGN ASSOCIATES  
 RESIDENTIAL & COMMERCIAL DESIGNERS  
 CONSULTING ENGINEERS  
 SITE PLANNERS  
 REAL ESTATE DEVELOPMENT CONSULTANTS  
 9 Alexander Drive, Windham, ME p/f 892-2640

(SUSSE CHALET INN)

7062  
310

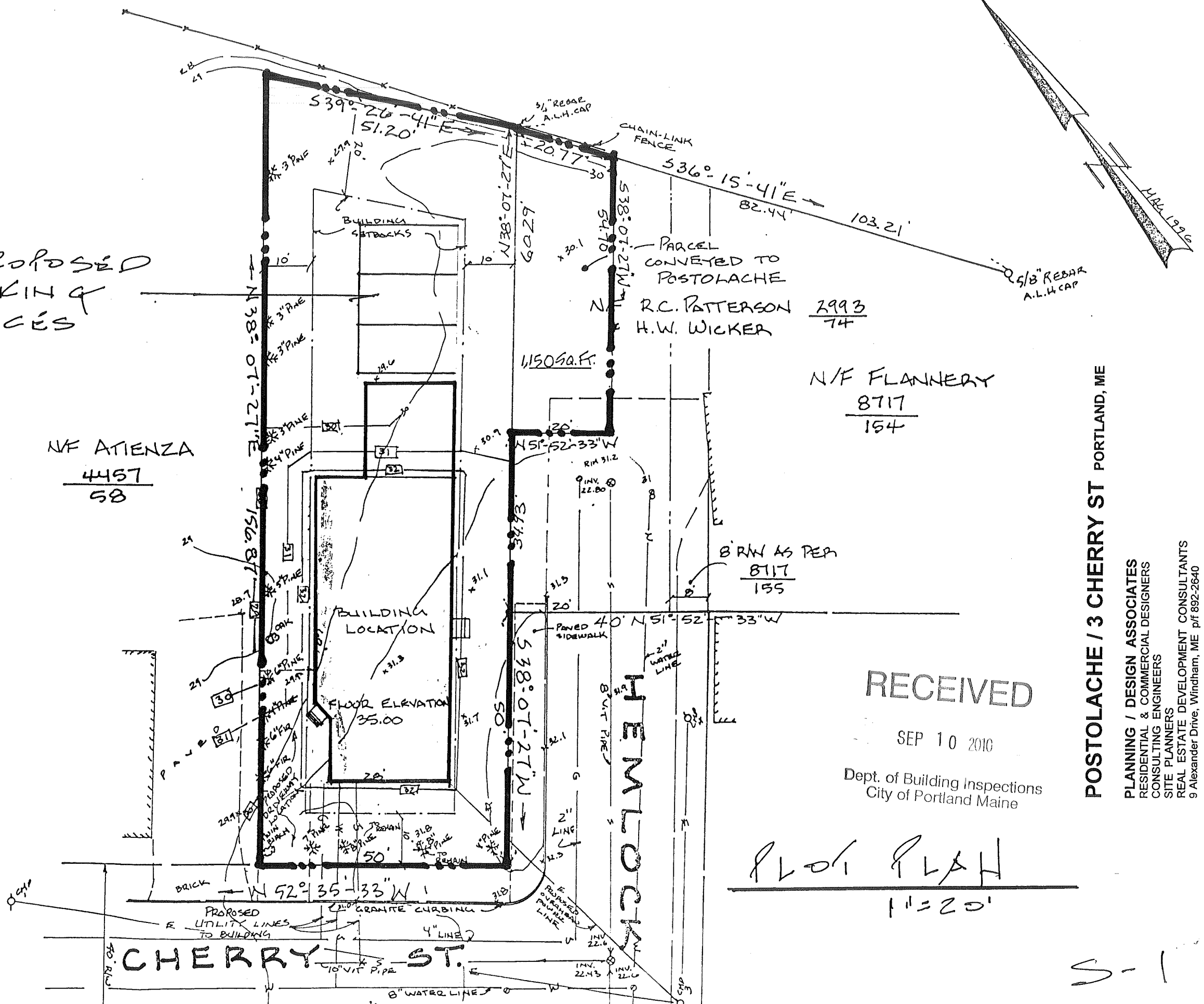
3 PROPOSED  
PARKING  
SPACES

N/F ATIENZA  
4457  
58

PARCEL  
CONVEYED TO  
POSTOLACHE  
R.C. PATTERSON 2993  
H.W. WICKER 74

N/F FLANNERY  
8717  
154

8' RW AS PER  
8717  
155



RECEIVED

SEP 10 2010

Dept. of Building Inspections  
City of Portland Maine

Plot Plan  
1" = 20'

POSTOLACHE / 3 CHERRY ST PORTLAND, ME

PLANNING / DESIGN ASSOCIATES  
RESIDENTIAL & COMMERCIAL DESIGNERS  
CONSULTING ENGINEERS  
SITE PLANNERS  
REAL ESTATE DEVELOPMENT CONSULTANTS  
9 Alexander Drive, Windham, ME p/f 892-2640

S-1