

REVISIONS

Job Number:	3044
Drawn By:	AN
Checked By:	AM
Phase:	CANOPY DOCUMENTS

Drawing Title:	SECOND FLOOR FRAMING PLAN
----------------	--------------------------------------

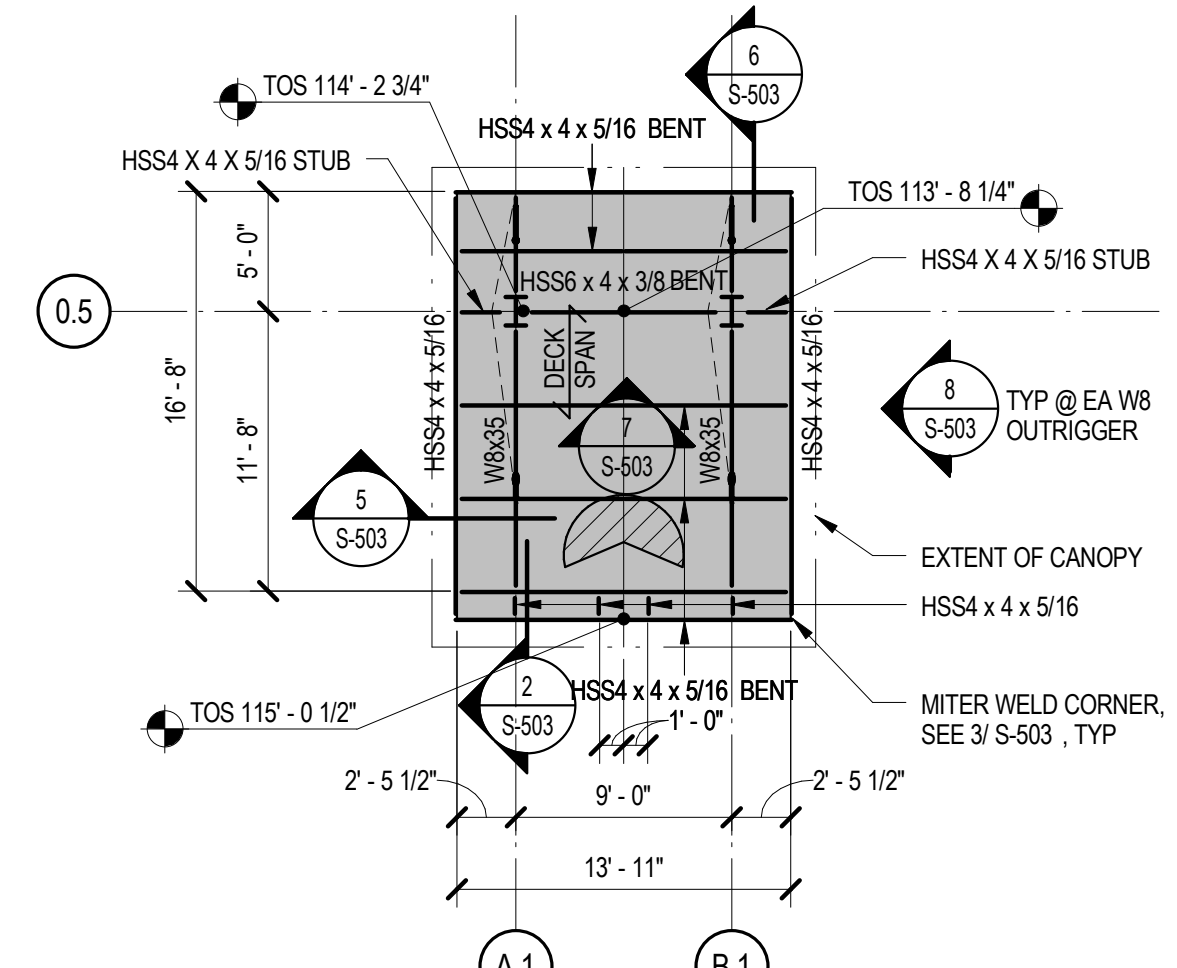
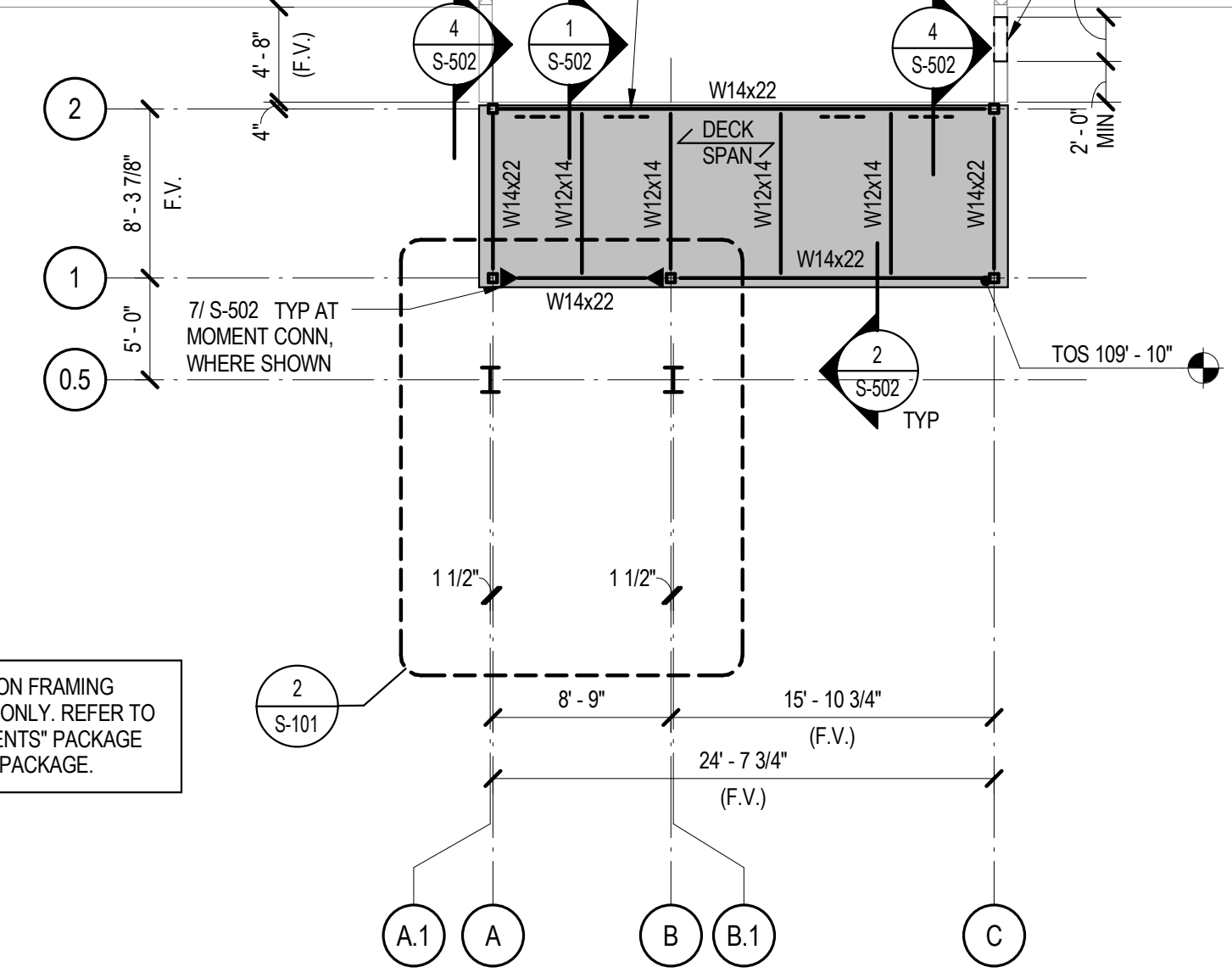
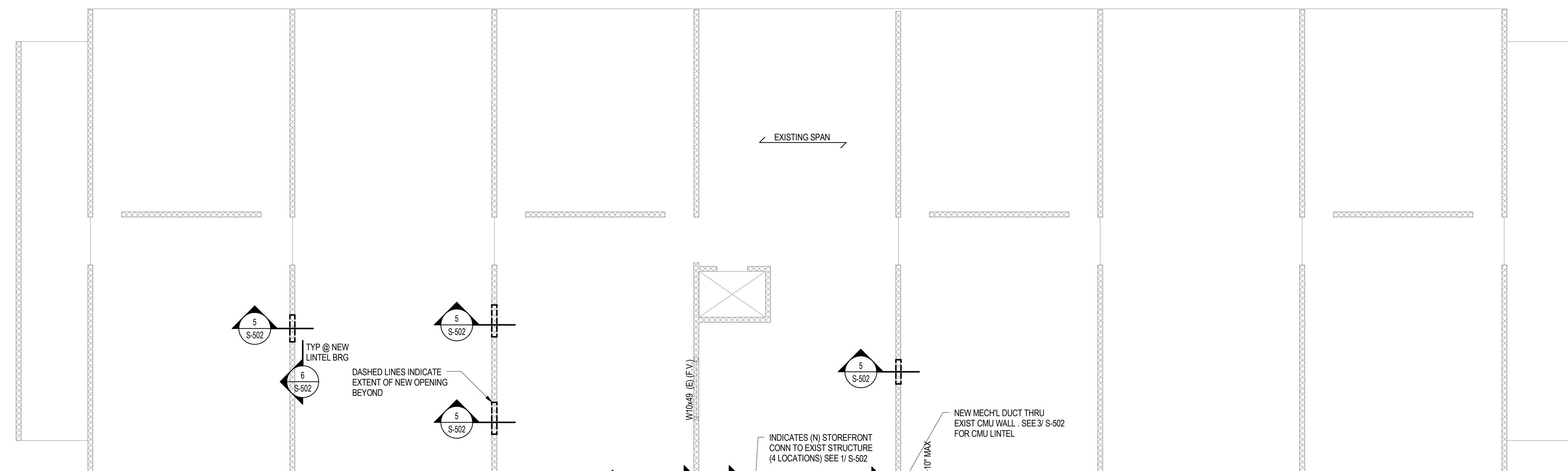
SHEET NUMBER:	S-101
DATE:	JUNE 30, 2017

NEW VESTIBULE ROOF PLAN NOTES

1. SHEET INDEX:
 GENERAL NOTES - S-000, S-001
 TYPICAL DETAILS - S-301, S-501
 STEEL COLUMN SCHEDULE - S-501
2. TOP OF STEEL (BOTTOM OF ROOF DECK) ELEVATIONS ARE SHOWN ON PLAN AND ARE INDICATED AS "TOS". ELEVATIONS ARE RELATIVE TO DATUM ELEVATION 100'-0"
3. TYPICAL ROOF DECK IS 1-1/2" THICK METAL ROOF DECK. REFER TO GENERAL NOTES FOR DECK PROPERTIES AND CONNECTION INFORMATION.
4. UNLESS NOTED OTHERWISE, STEEL BEAMS SHALL BE CENTERED ON AND EQUALLY SPACED BETWEEN COLUMN CENTERLINES.

UPPER FLOOR PLAN NOTES

1. FOLLOWING FINISH FLOOR ELEVATION RELATIVE TO LEVEL 1 FINISH FLOOR DATUM 100'-0" IS AS FOLLOWS (UNO), F.V.:
 FIRST FLOOR: 100' - 0"
 SECOND FLOOR: 108' - 8"
 THIRD FLOOR: 117' - 4"
 FOURTH FLOOR: 126' - 0"
 ROOF: 135' - 4"
2. TOP OF CONCRETE SLAB IS FINISH FLOOR, UNO.
3. SHEET INDEX:
 GENERAL NOTES - S-000
 TYPICAL DETAILS - S-301, S-501
 FOOTING SCHEDULE - S-301
 STEEL COLUMN SCHEDULE - S-501
4. TYPICAL EXISTING CONSTRUCTION (F.V.)
 8" HOLLOW CORE PLANK
5. FIELD VERIFY ALL DIMENSIONS PRIOR TO FABRICATION OF MATERIALS AND CONSTRUCTION.
6. CORING REQUIRED BY MEP SHALL BE DONE THROUGH SLABS OR DECKING. CORING OVER EXISTING PRIMARY STRUCTURAL MEMBERS (I.E. GIRDERS, BEAMS, JOISTS) IS NOT ACCEPTABLE UNLESS SPECIFICALLY APPROVED BY EOR/ARCH. ALL CORING/CUTTING TO BE SUBMITTED FOR EOR/ARCH REVIEW.
7. MECH'L PENETRATIONS THROUGH LOAD BEARING WALLS ARE NOT ACCEPTABLE UNLESS SPECIFICALLY APPROVED BY EOR/ARCH. ALL CUTTING THROUGH LOAD BEARING WALLS TO BE SUBMITTED FOR EOR/ARCH REVIEW.



1 SECOND FLOOR FRAMING PLAN
 1/8" = 1'-0"

2 CANOPY FRAMING PLAN
 1/8" = 1'-0"