

FOUNDATION PLAN NOTES

1. FINISH FLOOR ELEVATION IS 100' - 0" (RELATIVE TO DATUM 100-0).
2. TOP OF CONCRETE SLAB IS FINISH FLOOR UNLESS SHOWN OTHERWISE.
3. SHEET INDEX:
 GENERAL NOTES - S-000
 TYPICAL DETAILS - S-301, S-501
 STEEL COLUMN SCHEDULE - S-501
4. NEW STEEL COLUMNS TO BE CONSIDERED ARCHITECTURALLY EXPOSED STEEL (AESS). SEE GENERAL NOTES SECTION 5.5. SEE ARCH FOR REQUIRED FINISHES.

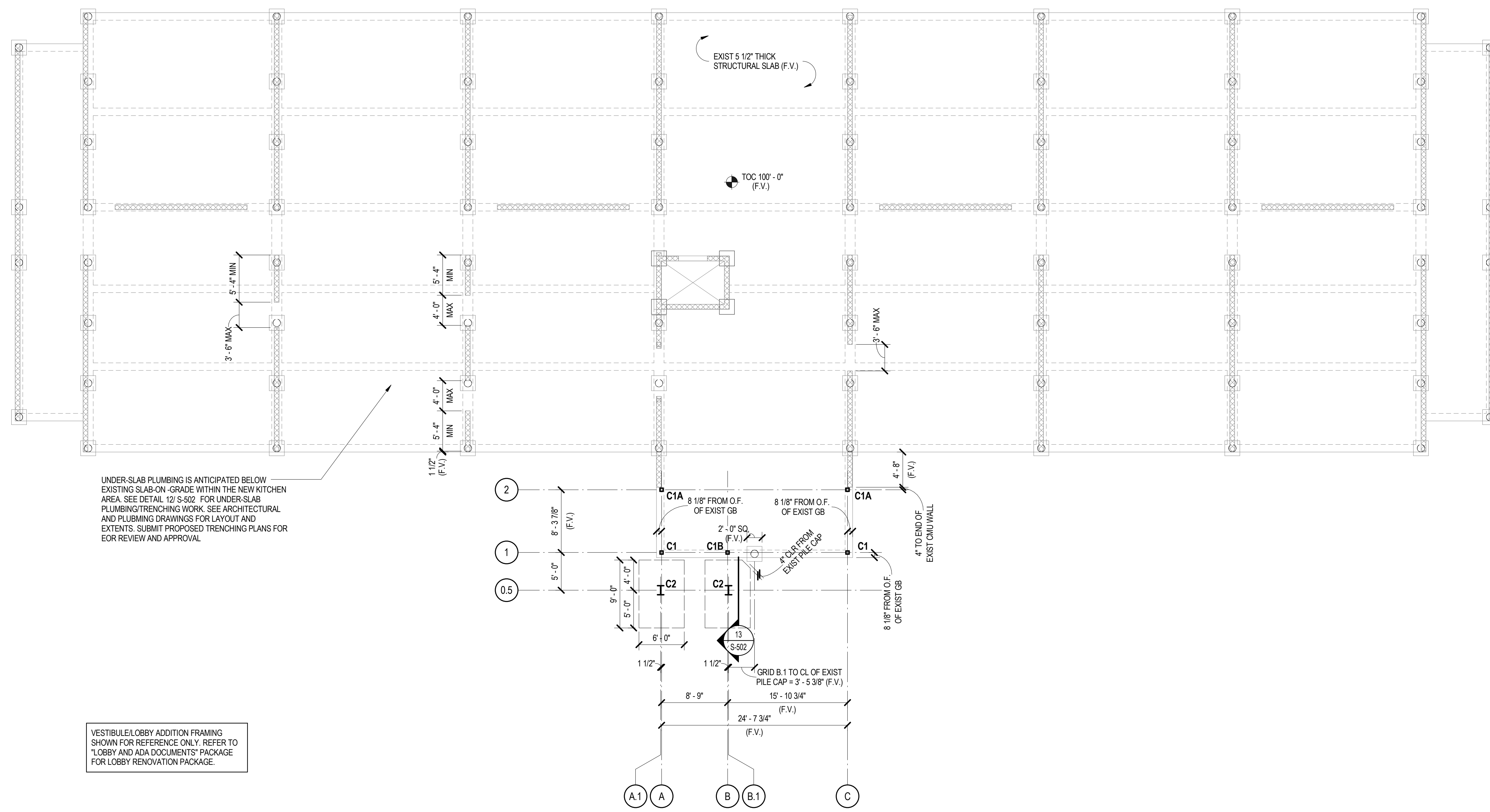
GROUTING PROCEDURE AT EXISTING CMU WALL

- STEP 1
- A) PROVIDE CLEAN-OUTS IN BOTTOM COURSE FOR EACH GROUT POUR
 - B) CONSTRUCT CLEAN-OUTS WITH OPENING OF SUFFICIENT SIZE TO PERMIT REMOVAL OF DEBRIS WITH MINIMUM OPENING DIMENSION OF 3"
 - C) REMOVE DEBRIS FROM CELLS BY SWEEPING AND BLOWING OUT WITH AIR HOSE. CELLS TO BE CHECKED BY INSPECTOR FOR CLEANLINESS BEFORE CLEANOUTS ARE CLOSED
 - D) CLEAN-OUT OPENINGS MAY BE SEALED BY MORTARING ORIGINAL FACE SHELL OR SECTION OF FACE SHELL OR BY BLOCKING.
 - E) FACE SHELL OR BLOCKING TO BE ADEQUATELY BRACED TO RESIST FLUID GROUT PRESSURE.
 - F) ALLOW MORTAR TO CURE FOR MINIMUM 4 HOURS PRIOR TO GROUTING
- STEP 2 (PROCEED TO STEP 3 FOR GROUT ONLY)
- A) INSTALL BARS INTO CELLS BY REMOVING FACE SHELLS AS NECESSARY TO POSITION BARS

STEP 3

- A) GROUT CELLS USING HIGH-LIFT GROUTING METHOD AND COARSE GROUT. SUBMIT GROUT MIX DESIGN TO EOR FOR REVIEW.
- B) PLACE GROUT WITHIN 1 1/2 HOURS FROM INTRODUCING WATER IN MIXTURE AND PRIOR TO INITIAL SET.
- C) PLACE GROUT IN LIFTS NOT TO EXCEED 4'-8". A LIFT IS HEIGHT TO WHICH GROUT IS PLACED INTO CELL IN ONE CONTINUOUS OPERATION.
- D) AFTER PLACEMENT OF A GROUT LIFT, CONSOLIDATE GROUT WITH MECHANICAL LOW VELOCITY VIBRATOR WITH 3/4" HEAD ACTIVATED FOR ONE TO TWO SECONDS IN EACH GROUTED CELL.
- E) RECONSOLIDATE GROUT TO REMOVE SMALL VOIDS AND RETURN GROUT TO A PLASTIC STATE BEFORE PLACEMENT OF NEXT GROUT LIFT. RECONSOLIDATE GROUT BETWEEN 3 TO 10 MINUTES AFTER GROUT LIFT PLACEMENT.
- F) IF USE OF SELF-CONSOLIDATING GROUT IS PREFERRED, SUBMIT PRODUCT DATA TO EOR FOR APPROVAL.

SPECIAL INSPECTION: SPECIAL INSPECTION BY A QUALIFIED INDEPENDENT TESTING AGENCY PRIOR TO PLACING GROUT IN CELLS AND CONTINUOUSLY DURING GROUTING OPERATION IS REQUIRED. AGENCY IS TO INSPECT CONDITION OF CELLS PRIOR TO GROUTING AND GROUT PLACEMENT PROCEDURES. SUBMIT INSPECTION REPORTS TO ARCH/EOR.



UNDER-SLAB PLUMBING IS ANTICIPATED BELOW EXISTING SLAB-ON-GRADE WITHIN THE NEW KITCHEN AREA. SEE DETAIL 12/S-502 FOR UNDER-SLAB PLUMBING TRENCHING WORK. SEE ARCHITECTURAL AND PLUMBING DRAWINGS FOR LAYOUT AND EXTENTS. SUBMIT PROPOSED TRENCHING PLANS FOR EOR REVIEW AND APPROVAL

VESTIBULE/LOBBY ADDITION FRAMING SHOWN FOR REFERENCE ONLY. REFER TO "LOBBY AND ADA DOCUMENTS" PACKAGE FOR LOBBY RENOVATION PACKAGE.

1 FIRST FLOOR FRAMING PLAN

1/8" = 1'-0"