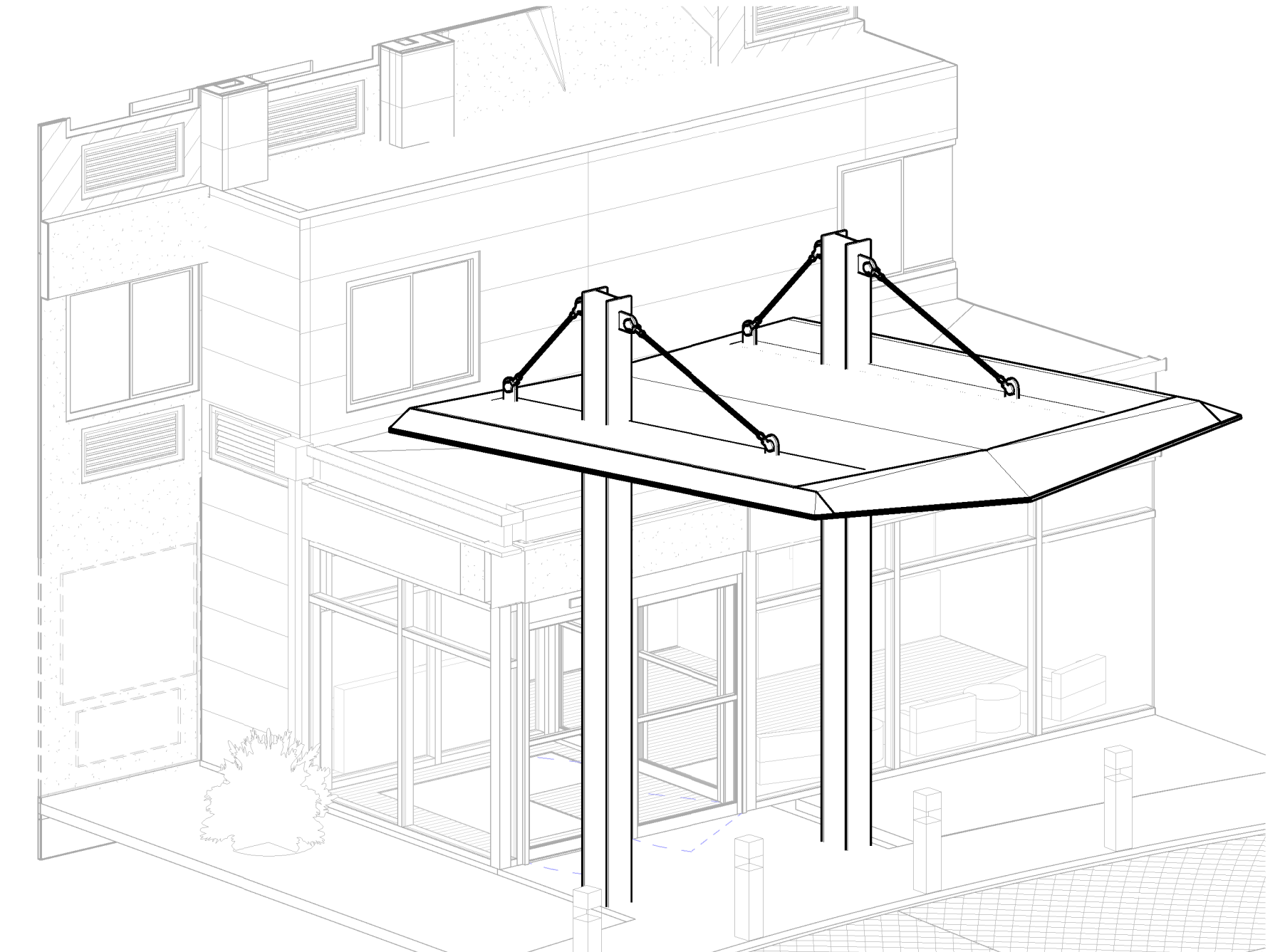
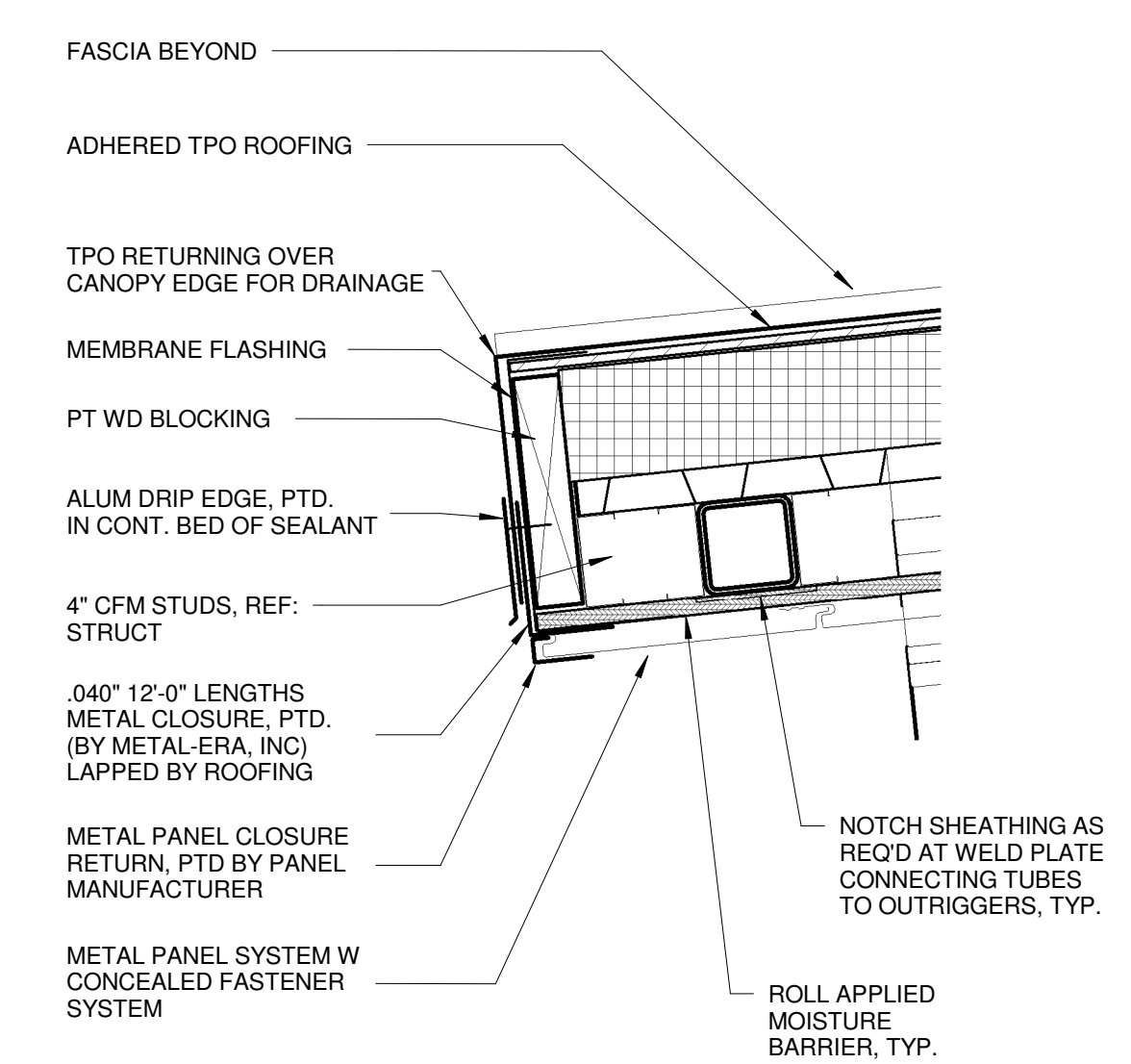


D1 3D SITE VIEW

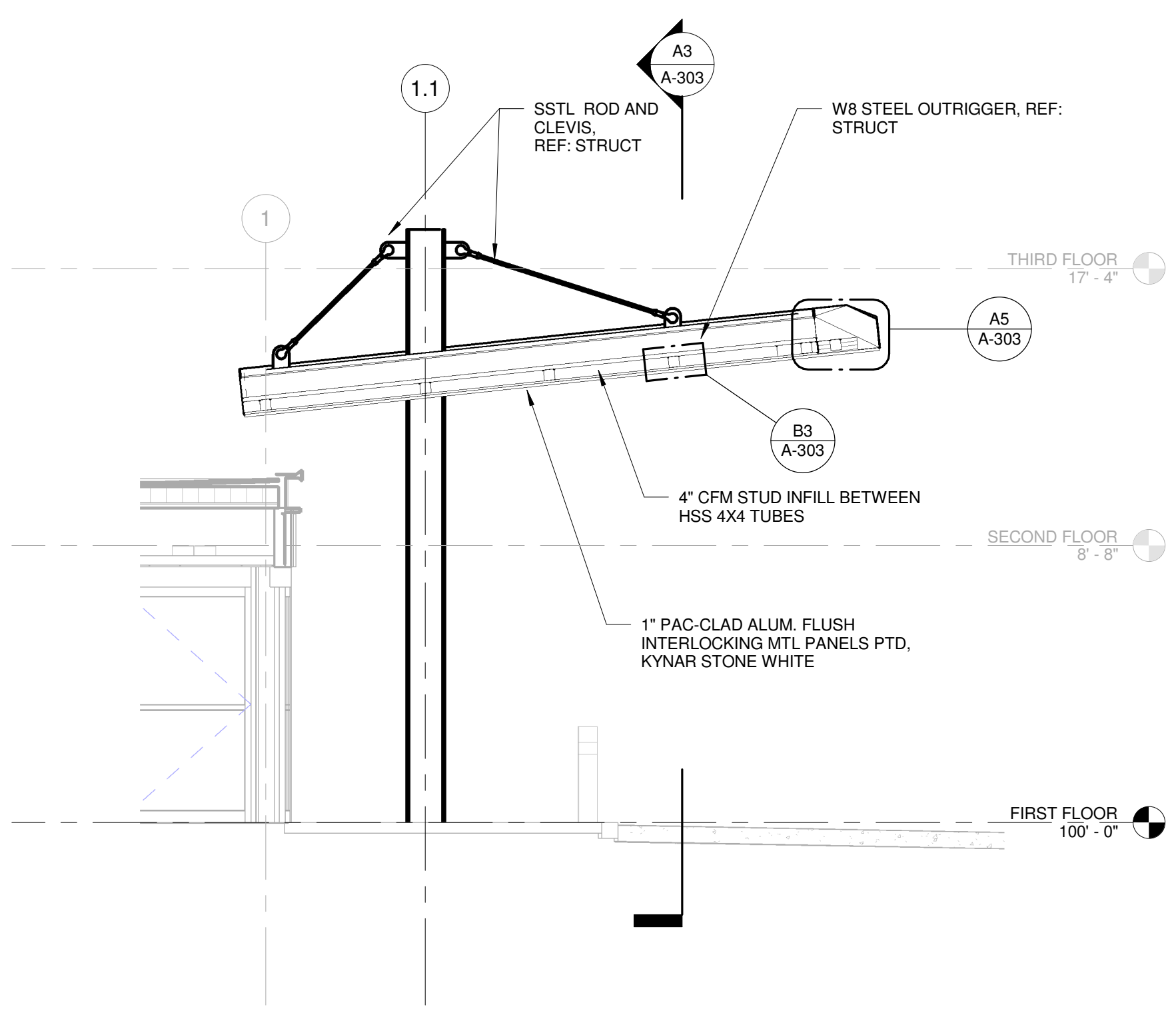


D3 3D AXONOMETRIC VIEW

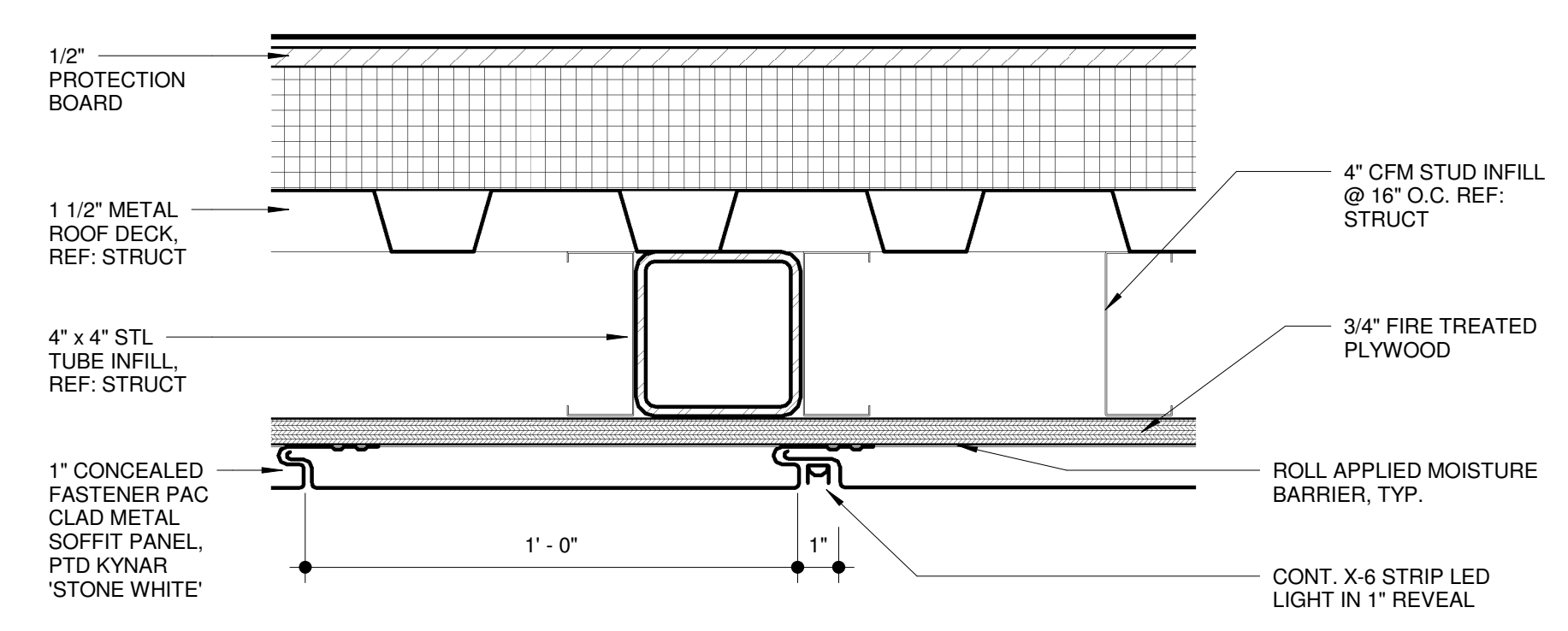


D5 REAR CANOPY DETAIL
 1 1/2" = 1'-0"

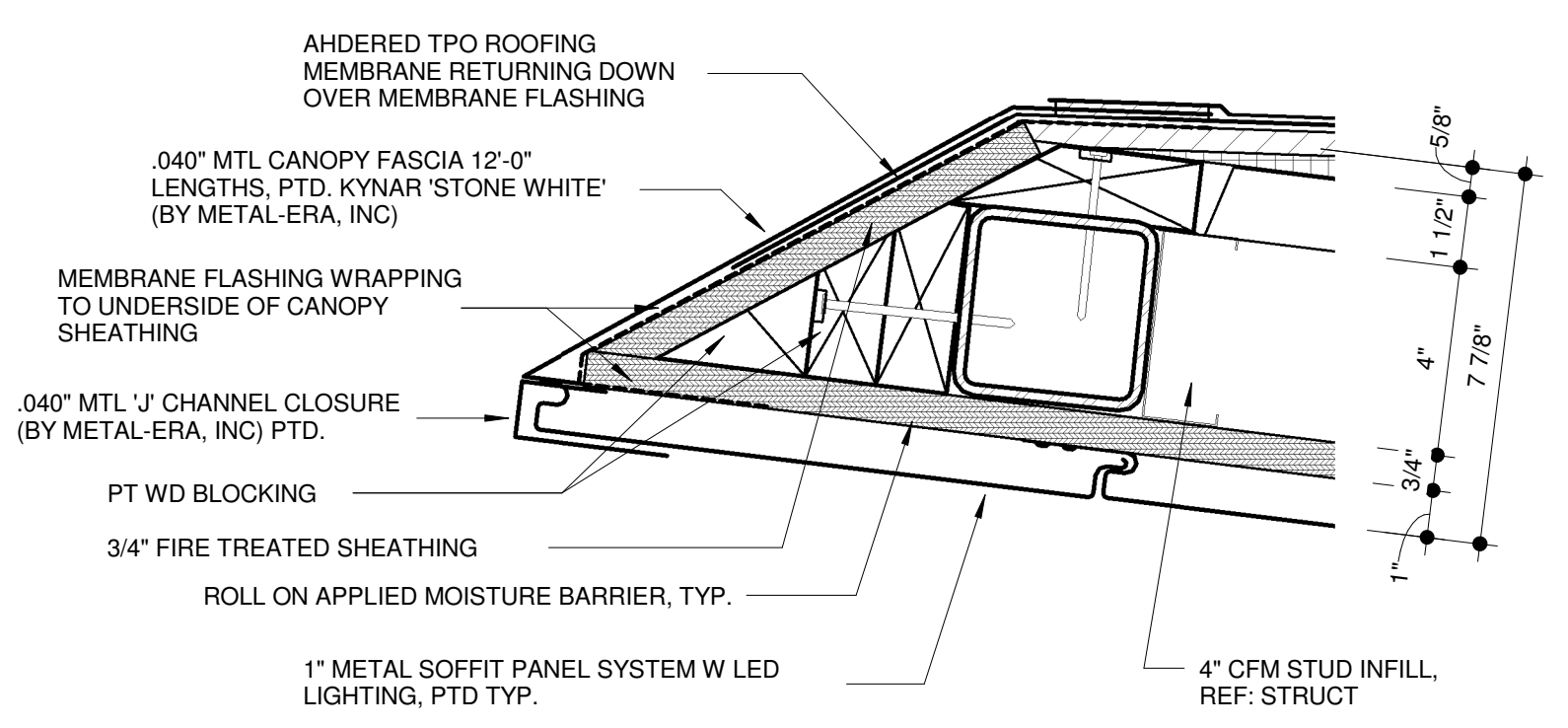
- GENERAL NOTES:**
- ALL METAL TO BE PAINTED (PTD) TO BE - KYNAR 'STONE WHITE FINISH'
 - TO AVOID DRILLING FASTENER HOLES INTO STEEL TUBING, SET CL OF PANEL FASTENER ROW 3" FROM CL OF TUBE BEFORE INSTALLING PANELS. VERIFY FASTENERS DO NOT LINE UP WITH STEEL STUBES, TYP.
 - 1" WIDE REVEAL OF METAL PANEL SYSTEM FOR STRIP LIGHTING LOCATIONS, REF: REFLECTED CEILING PLAN
 - EXTEND VALLEY FLASHING OVER FRONT CANOPY VALLEY EDGE AND PROVIDE DRIP EDGE
 - ALL LAPPED 12'-0" .040" METAL-ERA FASCIA TO OVERLAP 8" MIN WITH CONTINUOUS HIDDEN BED OF SEALANT AT LAP.



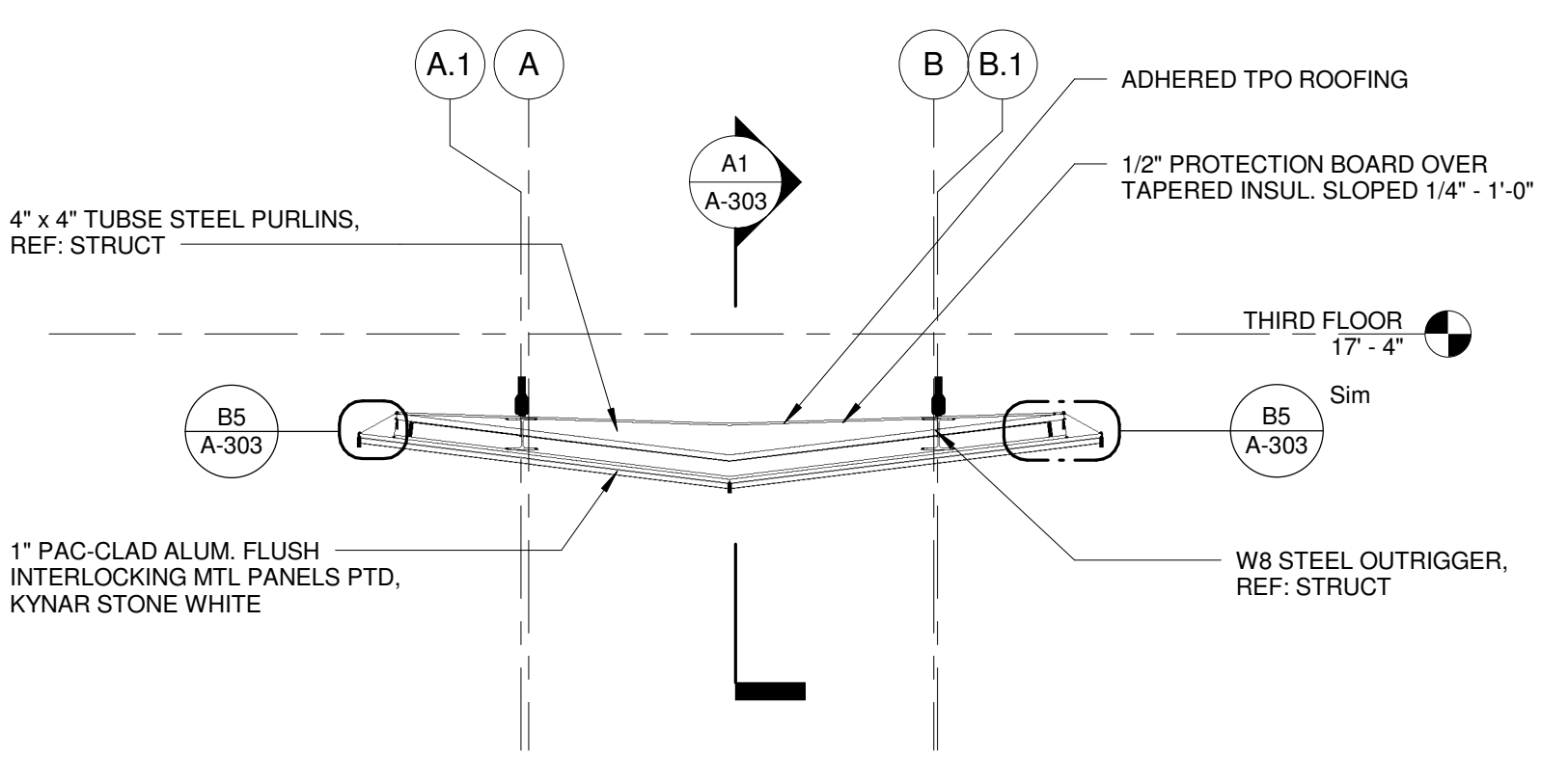
A1 CANOPY SECTION
 1/4" = 1'-0"



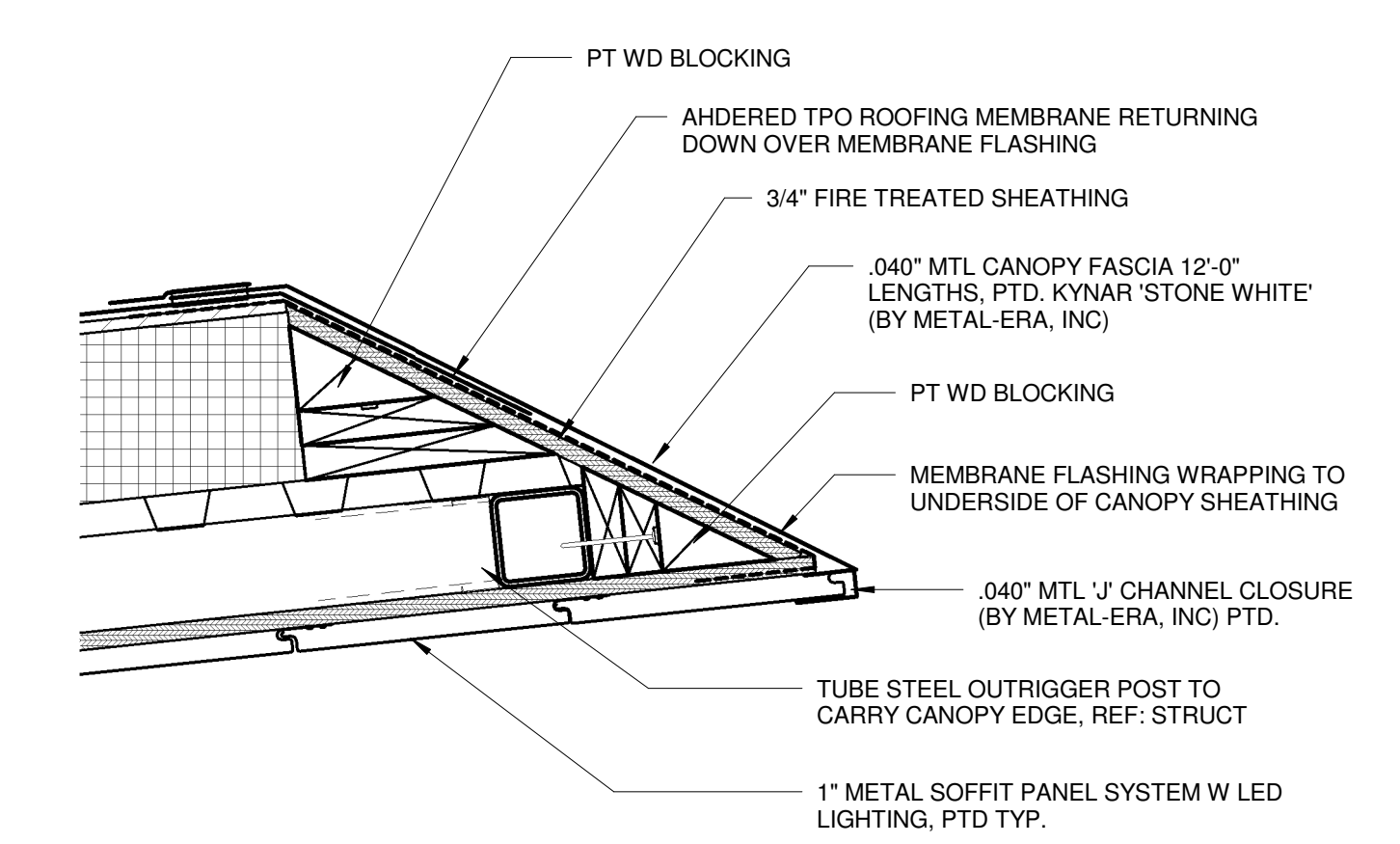
B3 CANOPY SOFFIT LIGHT DETAIL
 3" = 1'-0"



B5 CANOPY FASCIA DETAIL
 3" = 1'-0"



A3 CANOPY CROSS SECTION
 1/4" = 1'-0"



A5 CANOPY FASCIA DETAIL
 1 1/2" = 1'-0"