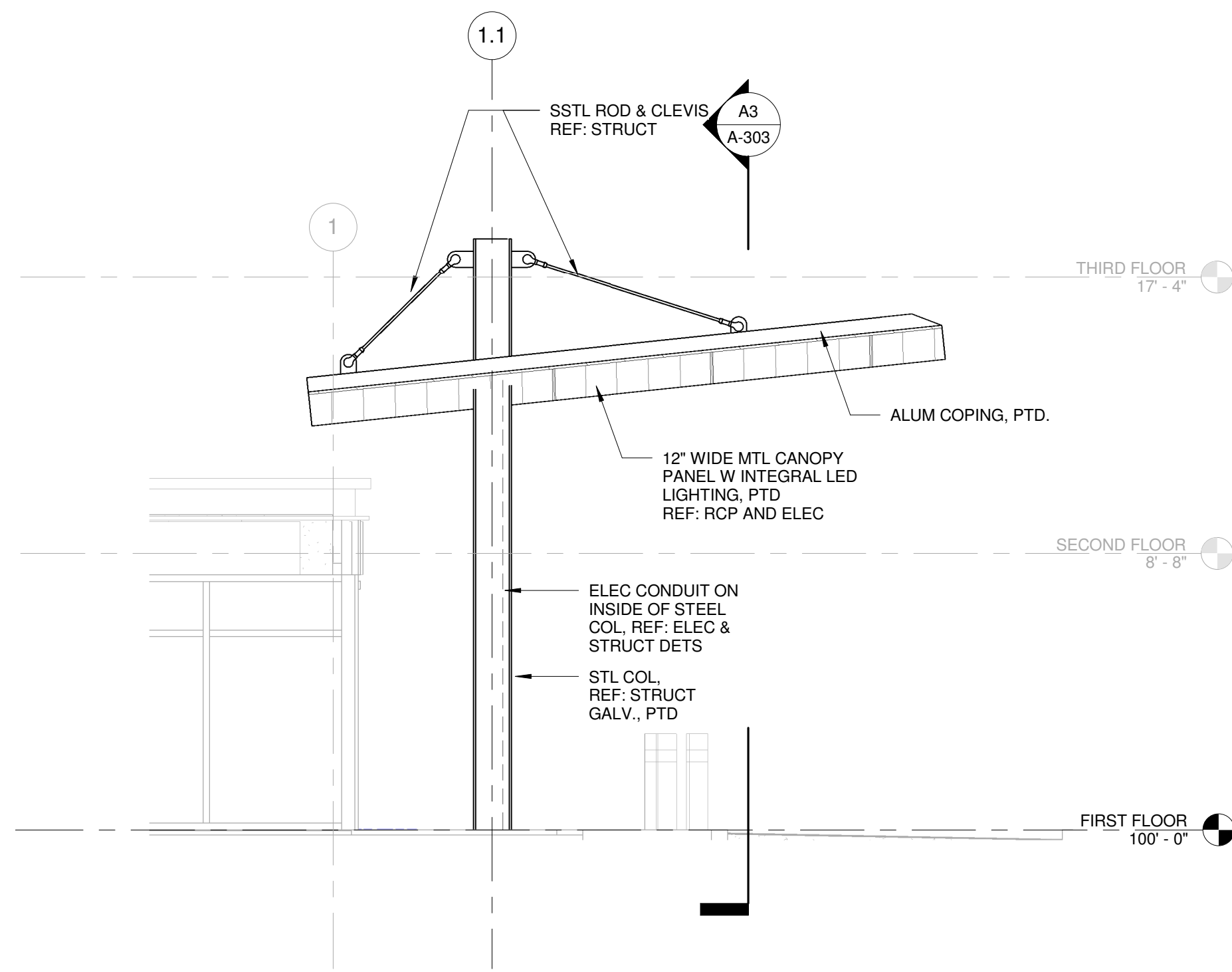
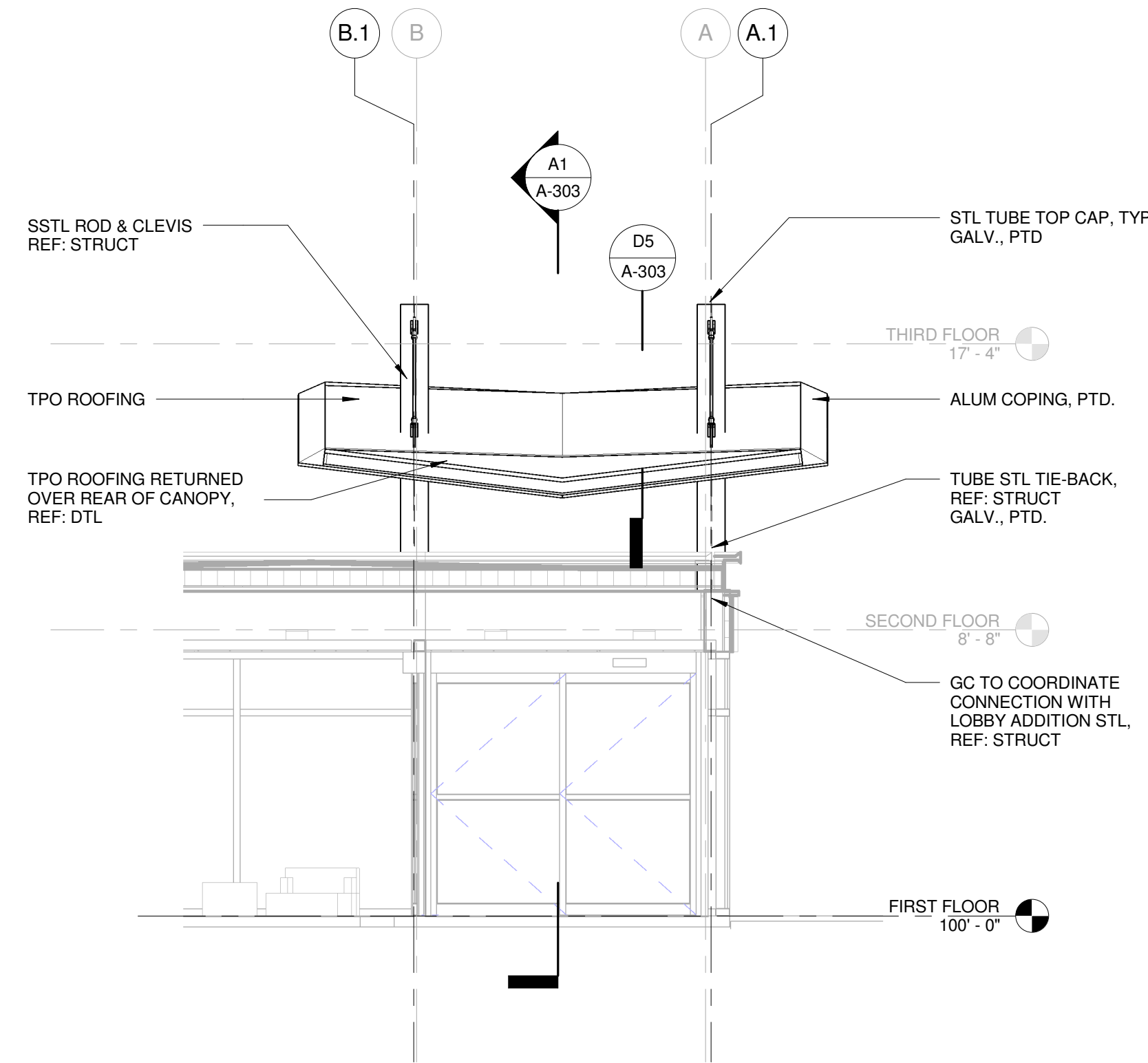


GENERAL NOTES:

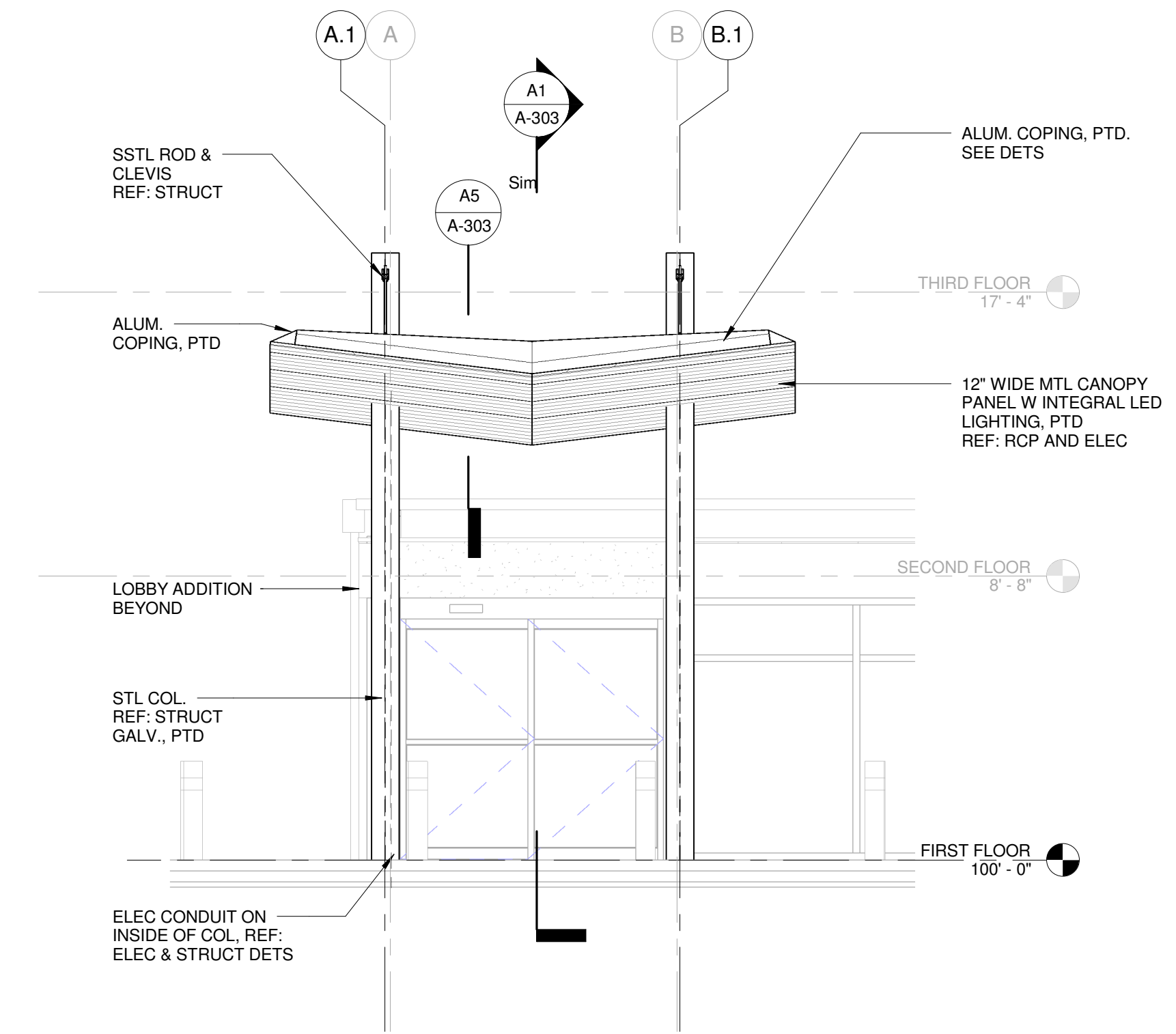
1. ALL METAL TO BE PAINTED (PTD) TO BE - KYNAR 'STONE WHITE FINISH'
2. TO AVOID DRILLING FASTENER HOLES INTO STEEL TUBING, SET CL OF PANEL FASTENER ROW 3" FROM CL OF TUBE BEFORE INSTALLING PANELS. VERIFY FASTENERS DO NOT LINE UP WITH STEEL STUBES, TYP.
3. 1" WIDE REVEAL OF METAL PANEL SYSTEM FOR STRIP LIGHTING LOCATIONS, REF: REFLECTED CEILING PLAN
4. EXTEND VALLEY FLASHING OVER FRONT CANOPY VALLEY EDGE AND PROVIDE DRIP EDGE
5. ALL LAPPED 12'-0" .040" METAL-ERA FASCIA TO OVERLAP 8" MIN WITH CONTINUOUS HIDDEN BED OF SEALANT AT LAP.



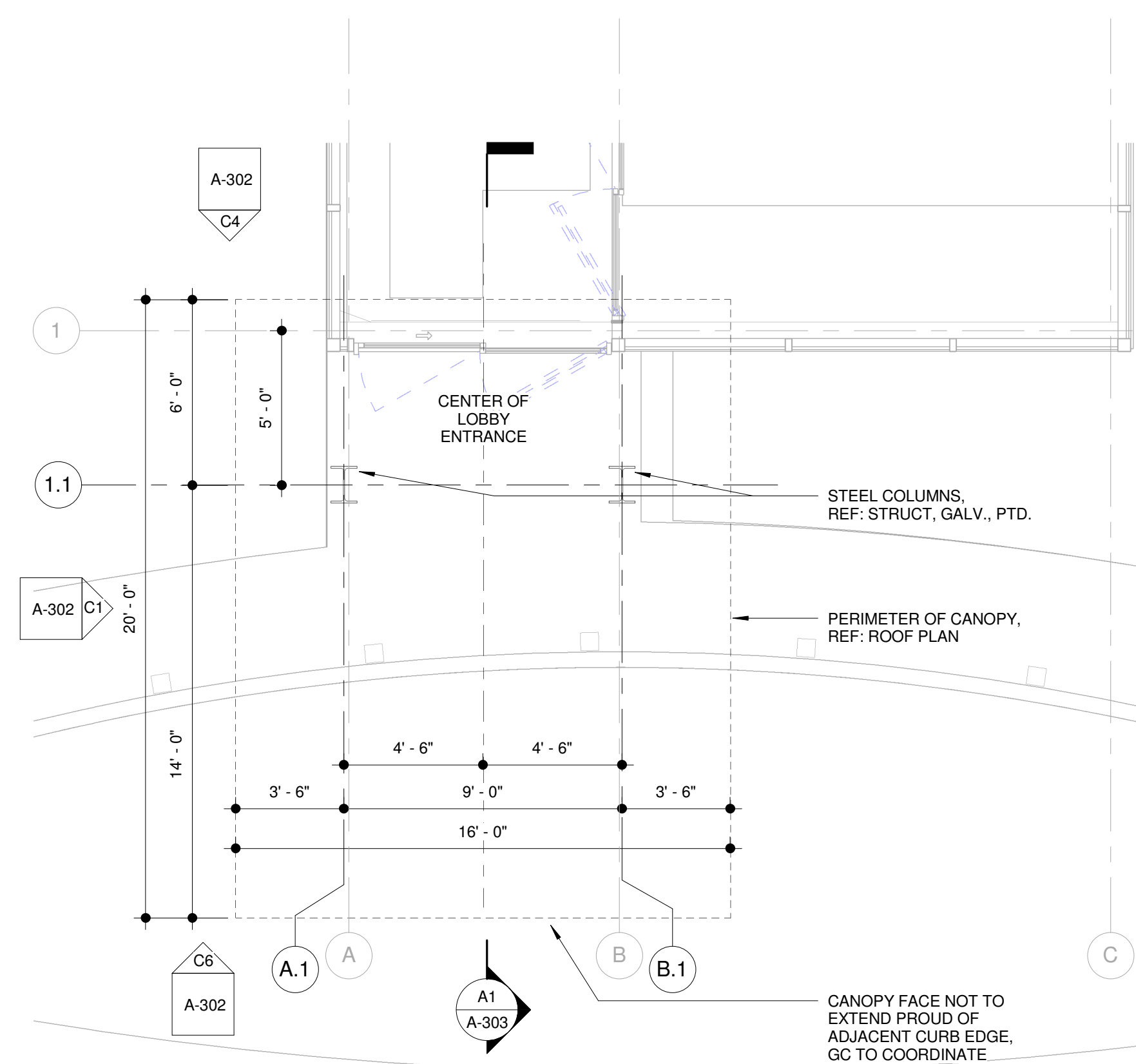
C1 CANOPY WEST ELEVATION
 1/4" = 1'-0"



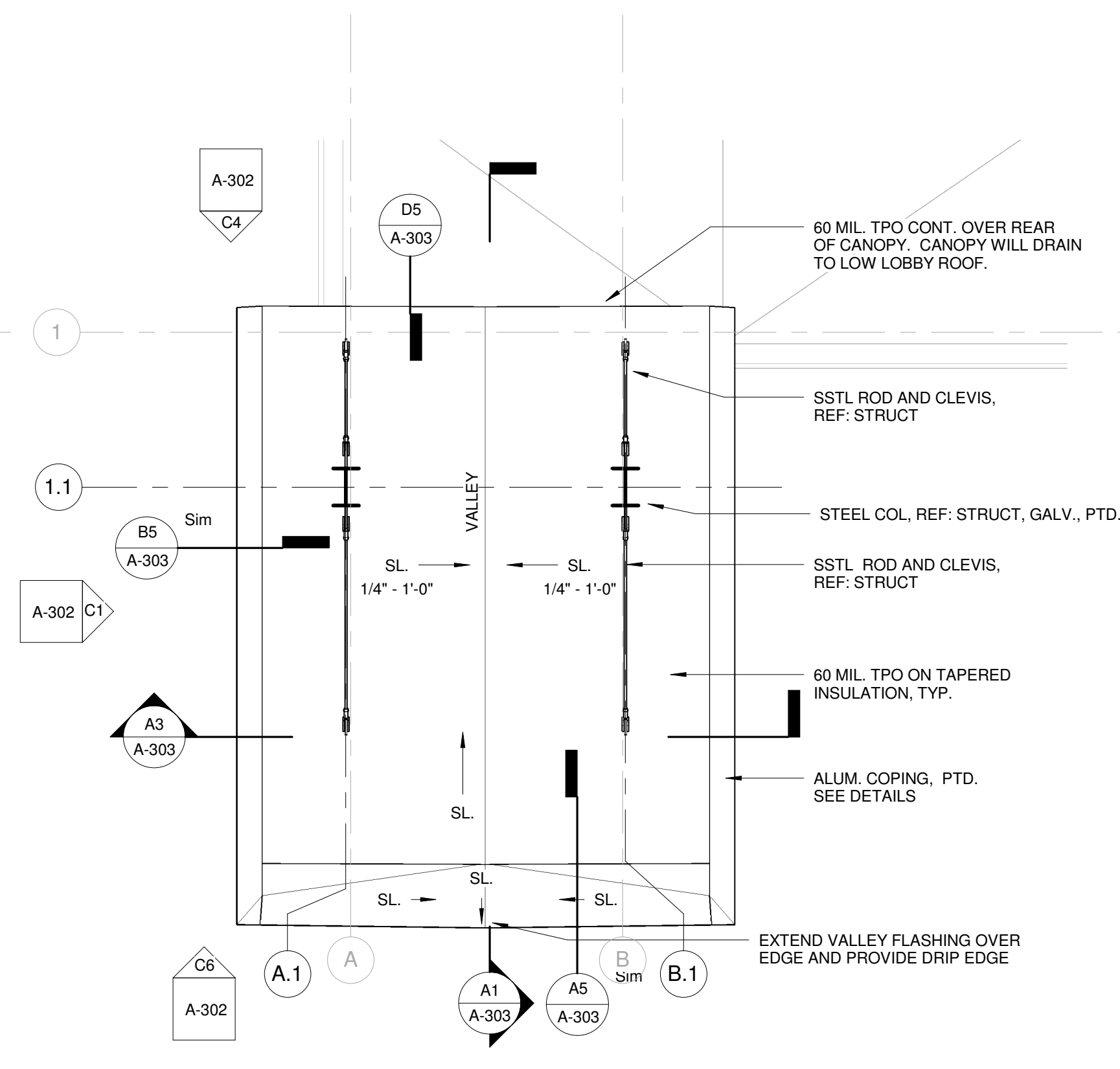
C4 CANOPY NORTH ELEVATION
 1/4" = 1'-0"



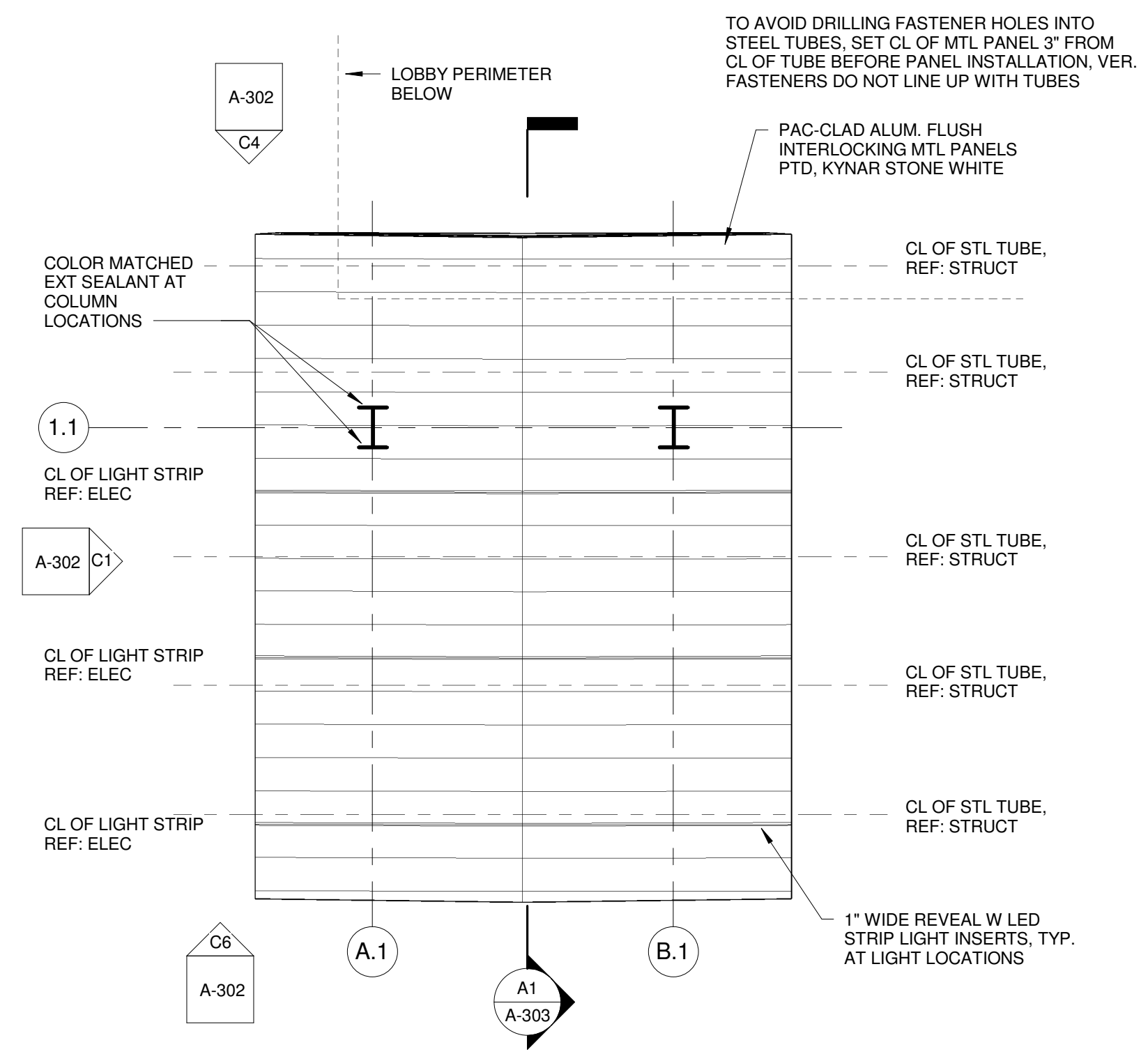
C6 CANOPY SOUTH ELEVATION
 1/4" = 1'-0"



A1 A01 CANOPY PLAN
 1/4" = 1'-0"



A4 A02 CANOPY ROOF PLAN
 1/4" = 1'-0"



A6 CANOPY REFLECTED CEILING PLAN
 1/4" = 1'-0"