

EMBED INSTALLATION PROCEDURE:

1. LOCATE EXIST REINFORCING.
2. CHIP TOP OF CONCRETE TO COLUMN BEARING ELEVATION. SPECIAL CARE SHALL BE TAKEN TO AVOID ANY DAMAGE TO THE REINFORCING OF THE EXIST SLAB & GRADE BEAM. ADJUST DBA LOCATION ±1" AS REQD. MAINTAIN SPECIFIED DBA SPACING.
3. DRILL HOLE FOR SPECIFIED DBAs PRIOR TO EMBED FABRICATION. FABRICATE PLATES TO MATCH DRILLED HOLE LOCATIONS. EPOXY GROUT DBAs INTO PLACE AND INSTALL BASE PL.

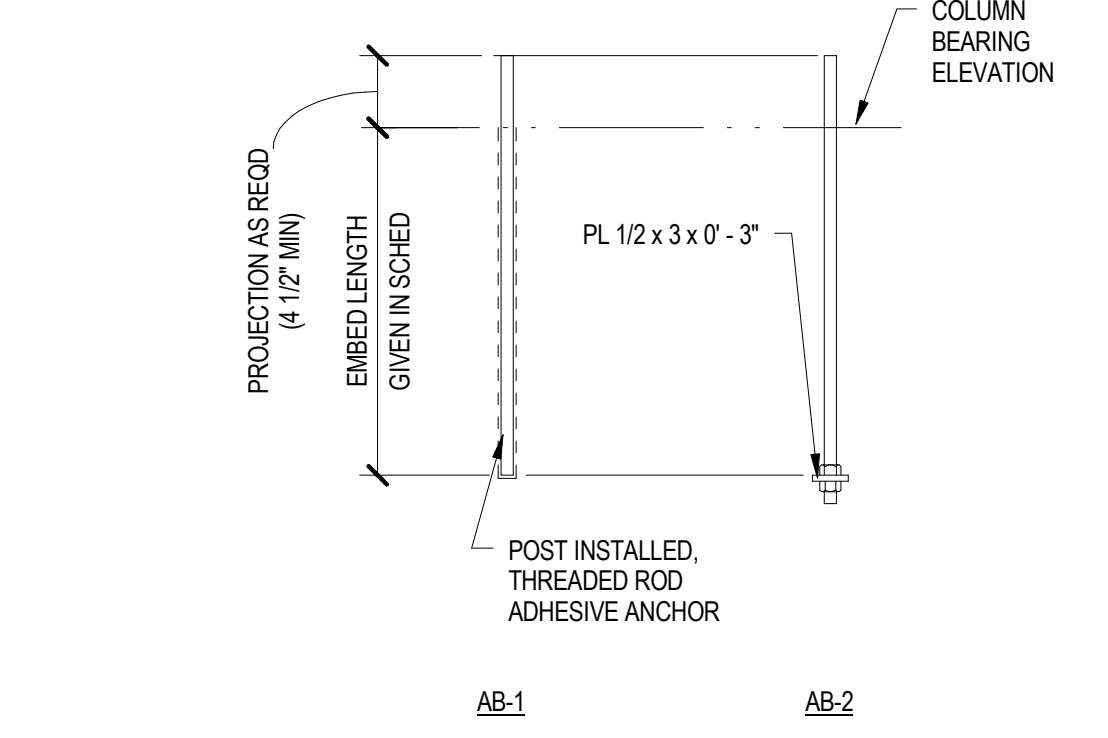
10 C1B COLUMN BASE PLATE

1 1/2" = 1'-0"

7 C1 COLUMN BASE PLATE

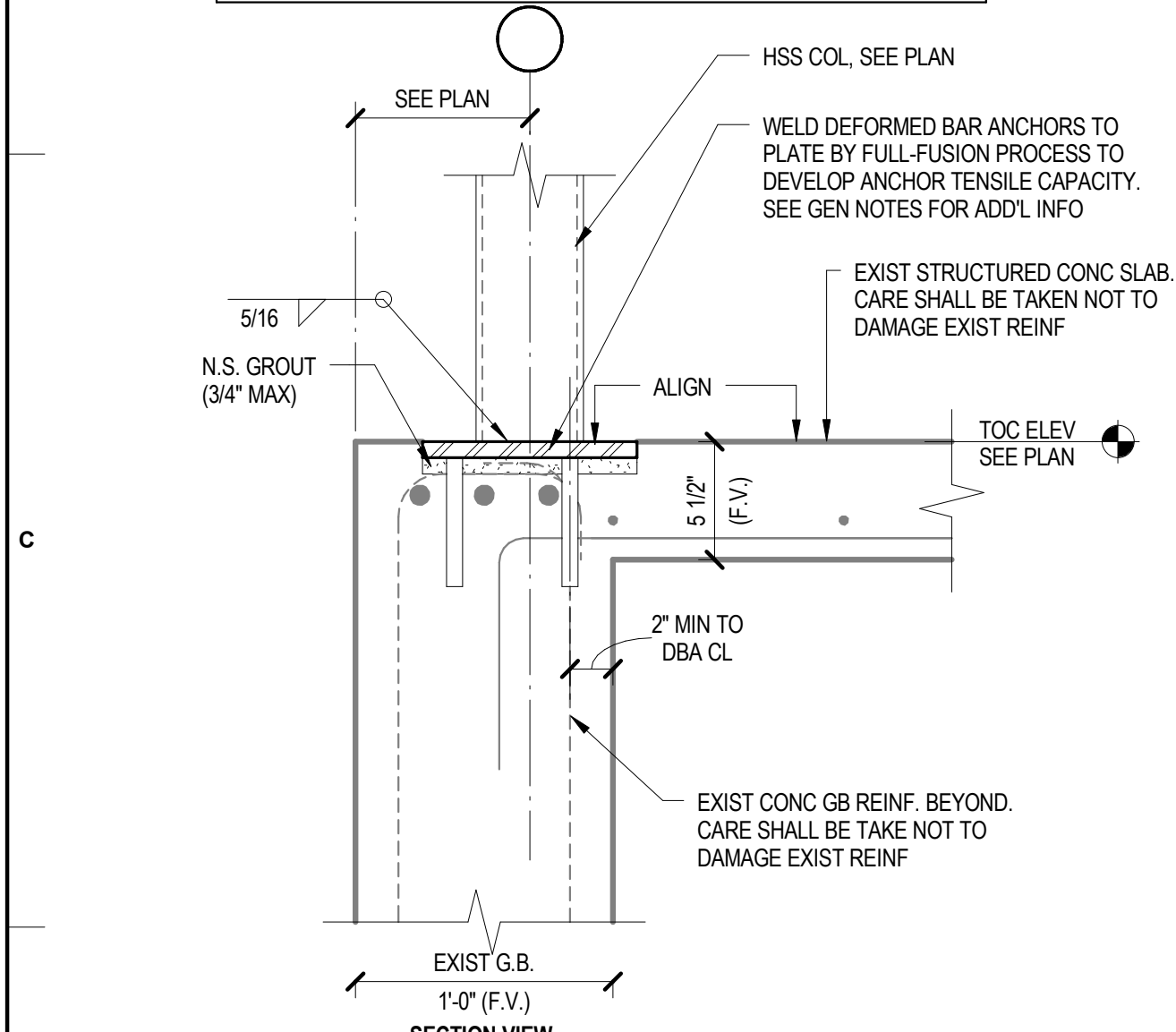
1 1/2" = 1'-0"

STEEL COLUMN SCHEDULE										
WT	COL SIZE	BASE PLATE DIMENSIONS				ANCHOR BOLTS				
		DIM "A"	DIM "B"	t	DIM "C"	DIM "D"	DETAIL	NUMBER	TYPE	DIA
C1	HSS 5 x 5 / 5/16	SEE DETAIL				78/14/S-501	3	SEE DETAIL	3/4"	6"
C1A	HSS 5 x 5 / 5/16	SEE DETAIL				14/S-501	4	SEE DETAIL	3/4"	6"
C1B	HSS 5 x 5 / 5/16	SEE DETAIL				108/14/S-501	4	SEE DETAIL	3/4"	6"



1 ANCHOR BOLT TYPES TYPICAL DETAIL

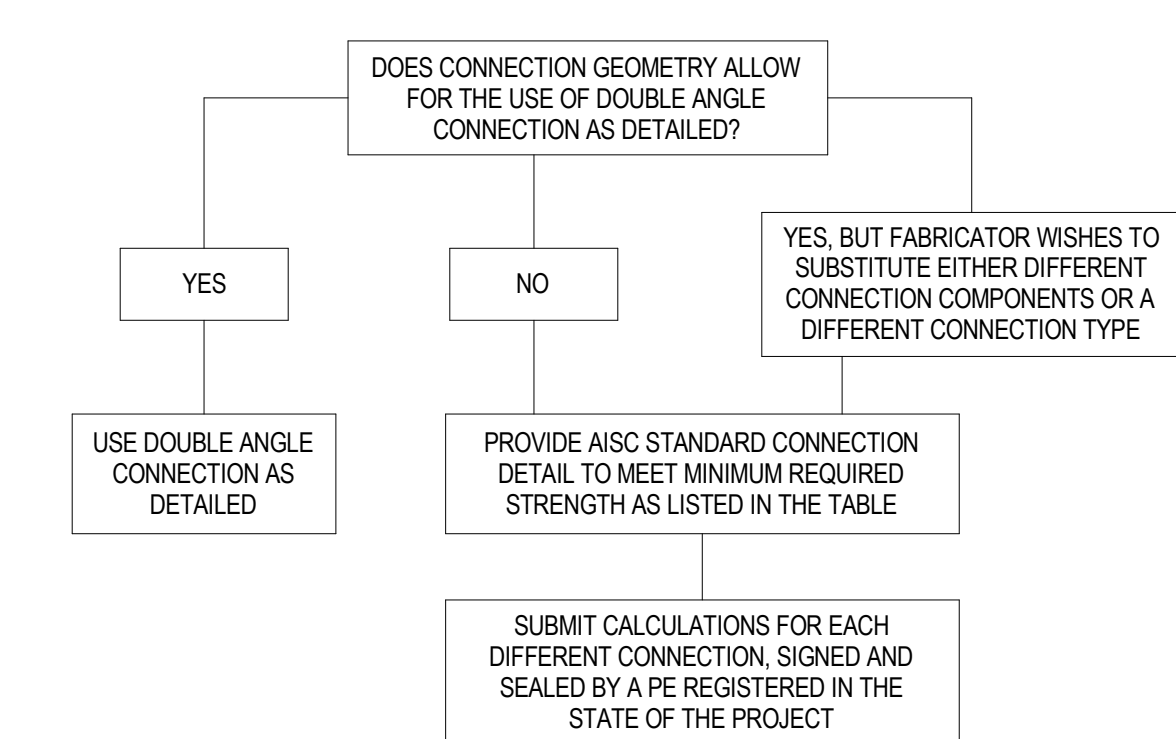
NO SCALE TD05102



14 C1A COLUMN BASE PLATE

1 1/2" = 1'-0"

SIMPLE SHEAR CONNECTION FLOW CHART



BEAM SIZE	MINIMUM CONNECTION DESIGN STRENGTH (LRFD, KIPS)	
	STANDARD	HEAVY
W8	17	N.A.
W10	21	N.A.
W12	28	38
W14	46	58
W16	50	66
W18	78	94
W21	92	130
W24	128	170
W27	150	230
W30	181	260
W33	215	300
W36	242	308

NOTES:
1. EXTENDED CONNECTIONS (IN WHICH THE END OF THE SUPPORTED BEAM STOPS SHORT OF THE COLUMN OR GIRDER FLANGES) ARE NOT ALLOWED, UNLESS SPECIFICALLY DETAILED IN THE DRAWINGS.

NOTES:
1. WELD A IS 3/16" FOR STANDARD 1/4" FOR HEAVY.
2. BOLTS ARE ASTM A325N U.N.O.
3. BEAM CONNS ARE STANDARD UNLESS DENOTED BY AN ASTERISK (*) ON PLAN.

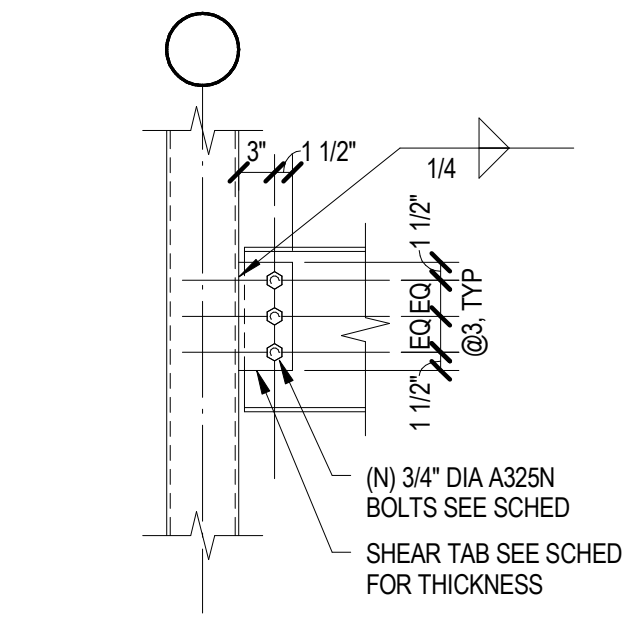
BEAM SIZE	STANDARD		HEAVY	
	ANGLE LENGTH (L)	NO. OF ROWS OF BOLTS (N)	ANGLE LENGTH (L)	NO. OF ROWS OF BOLTS (N)
W8, W10	5-1/2"	2	N.A.	N.A.
W12	5-1/2"	2	8-1/2"	3
W14, W16	8-1/2"	3	11-1/2"	4
W18	11-1/2"	4	14-1/2"	5
W21	11-1/2"	4	17-1/2"	6
W24	14-1/2"	5	20-1/2"	7
W27	14-1/2"	5	23-1/2"	8
W30	17-1/2"	6	26-1/2"	9
W33	20-1/2"	7	29-1/2"	10
W36	23-1/2"	8	29-1/2"	10

REFER TO AISC TABLES 10-1 & 10-2.

12 SIMPLE SHEAR STEEL BEAM CONN. TYPICAL DETAIL

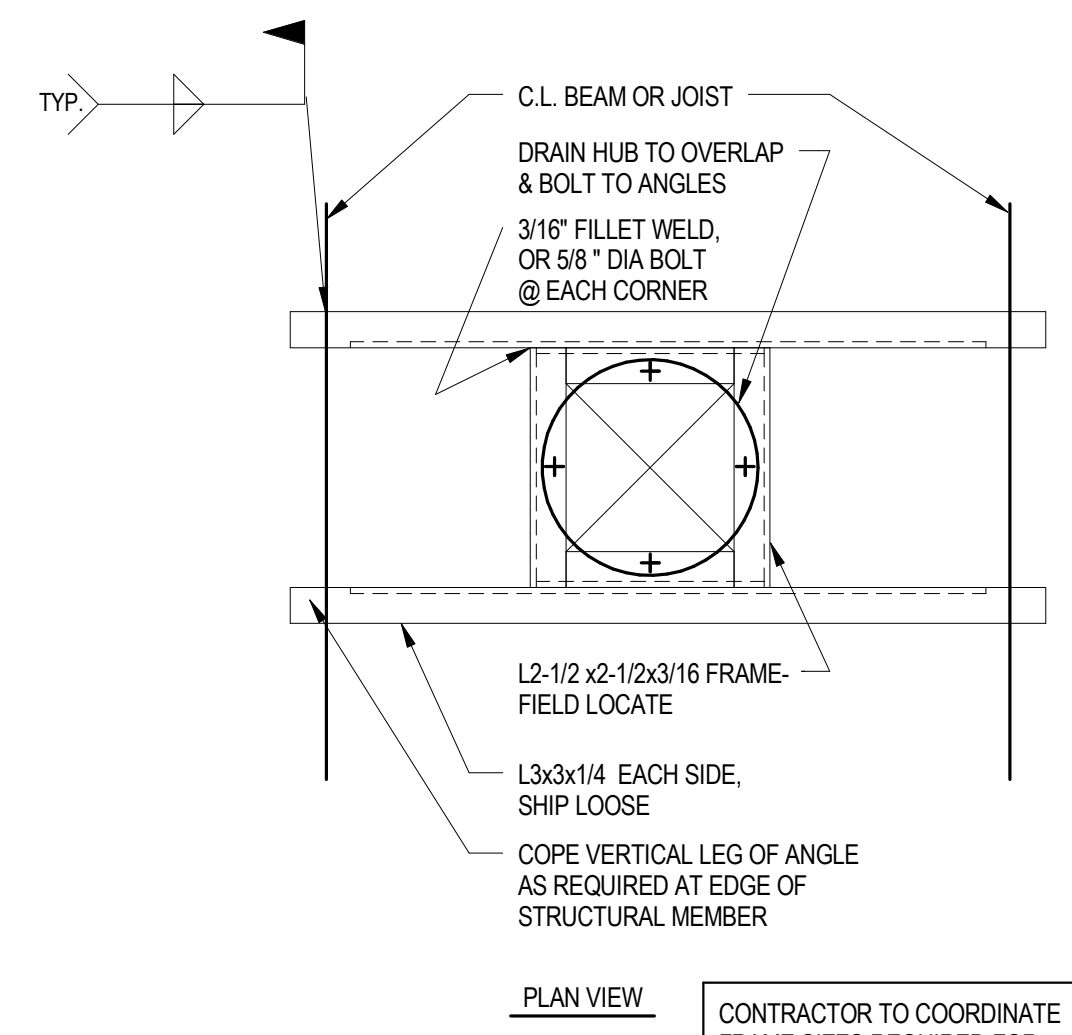
NO SCALE TD05200

BEAM SIZE	BOLTS (N)	SHEAR TAB THICKNESS	CAPACITY (LRFD, K)
W8	2	3/8"	20
W10	2	3/8"	23
W12	3	3/8"	36
W14	3	3/8"	42
W16	4	3/8"	61
W18	5	3/8"	81



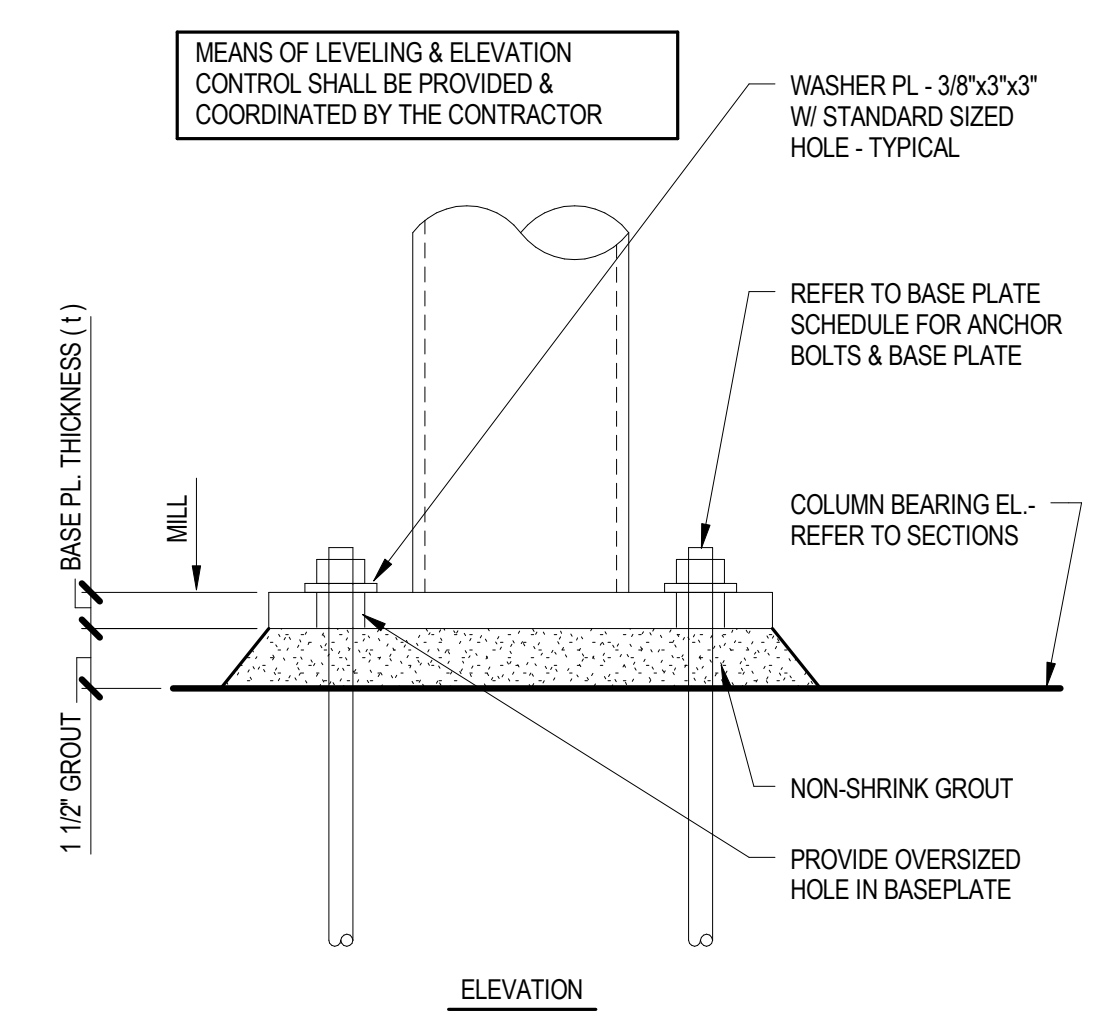
5 ROOF BEAM TO COLUMN CONN TYPICAL DETAIL

NO SCALE



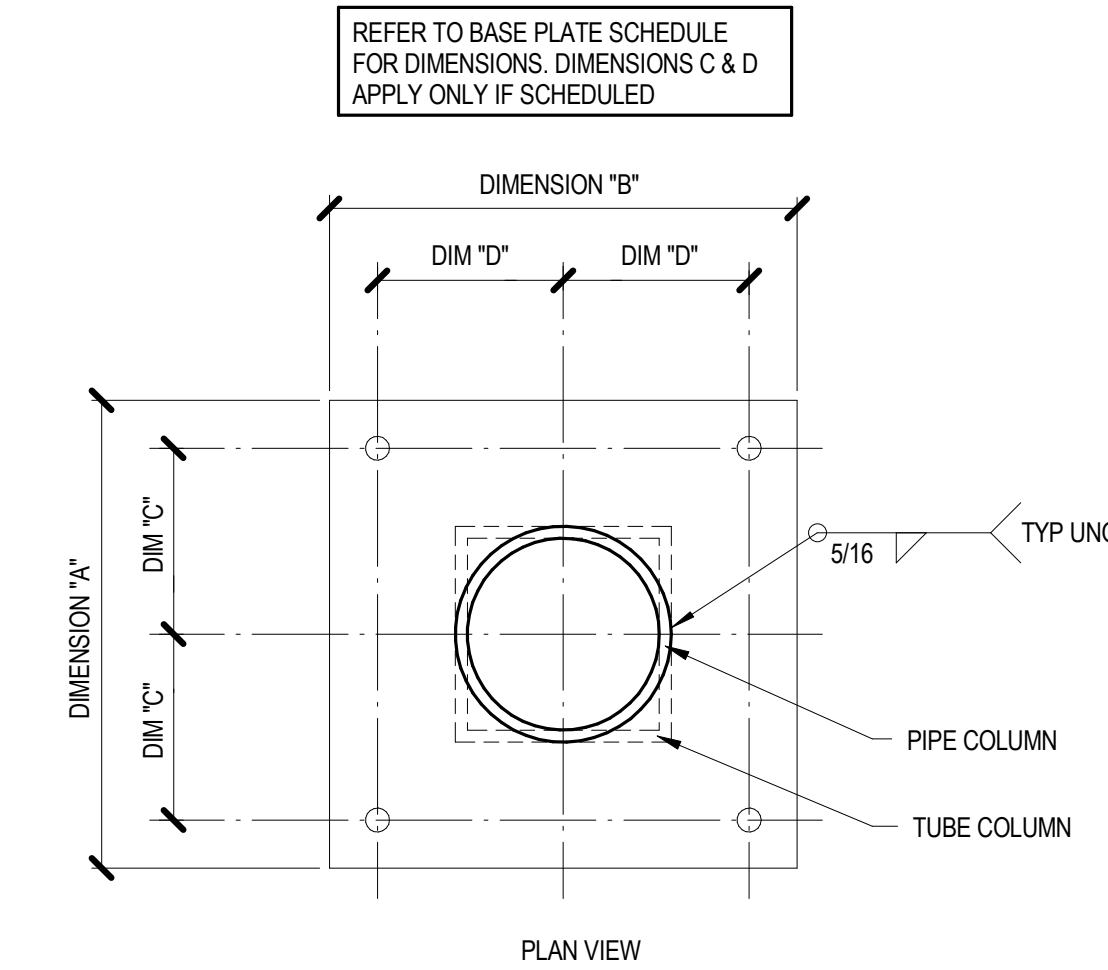
6 ROOF DRAIN SUPPORT FRAME TYPICAL DETAIL

NO SCALE TD05616



2 COLUMN BASE PLATE TYPICAL DETAIL

NO SCALE TD05121



3 COLUMN BASE PLATE TYPICAL DETAIL

NO SCALE

L.A. FUOSS PARTNERS, INC.
Structural Engineers
101 Federal Street, Suite 502 • Boston, MA 0210
617-948-5700 • www.lafp.com
LAPP PROJECT NO. 17044

Project:
LAQUINTA
INNS & SUITES
PORTLAND LaQUINTA INN & SUITES - LQ #2049 RENOVATION
340 Park Ave, Portland, ME 04102
2049

Project Owner:
LQ MANAGEMENT, LLC
909 HIDDEN RIDGE, SUITE 600 IRVING, TEXAS 75038

Architect:
BMA
Architectural Group
Professional Corporation
Architects ■ Designers ■ Planners
12 Middle Street
Amherst, New Hampshire 03031
TEL 603 673 1991 FAX 603 672 1385
www.bmaworld.com

Seal:
STATE OF MAINE
AARON ANDREW FORD
No. 12471
LICENSED PROFESSIONAL ENGINEER
1-18-17

BMA COPYRIGHT:
These plans are copyrighted and are subject to copyright protection as an "architectural work" under Sec. 102 of the Copyright Act, 17 U.S.C. as amended December 1990 and known as Architectural Works Copyright Protection Act of 1990. The protection includes but is not limited to the overall form as well as the arrangement and composition of spaces and elements of the design. Under such protection, unauthorized use of these plans, work or home represented, can legally result in the cessation of construction or buildings being seized and/or monetary compensation to BMA Architectural Group, P.C.

REVISIONS	

Job Number:	3044
Drawn By:	AN
Checked By:	AM
Phase:	LOBBY AND ADA DOCUMENTS

Drawing Title:
DETAILS

SHEET NUMBER:
S-501
DATE: APRIL 18, 2017