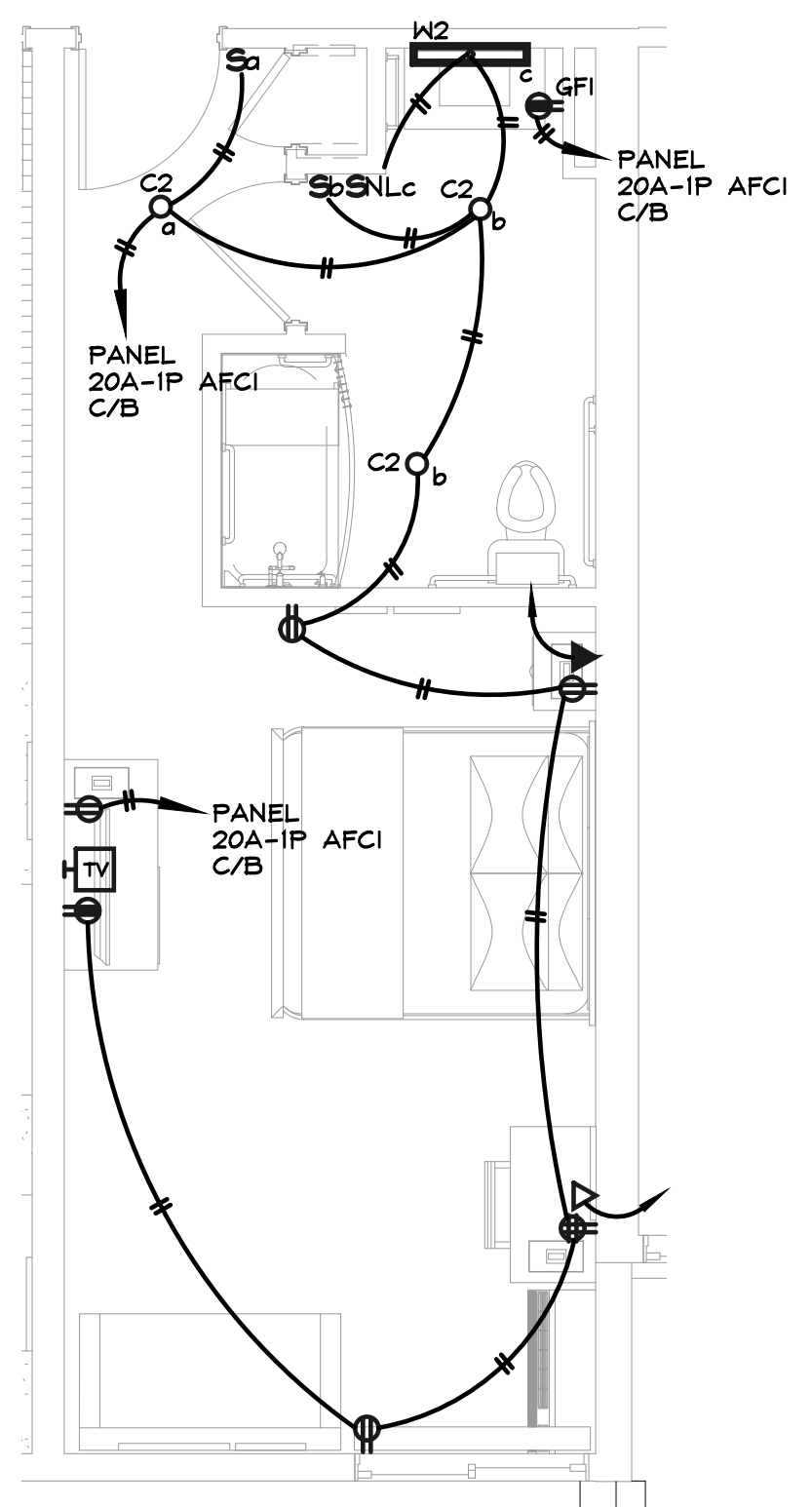
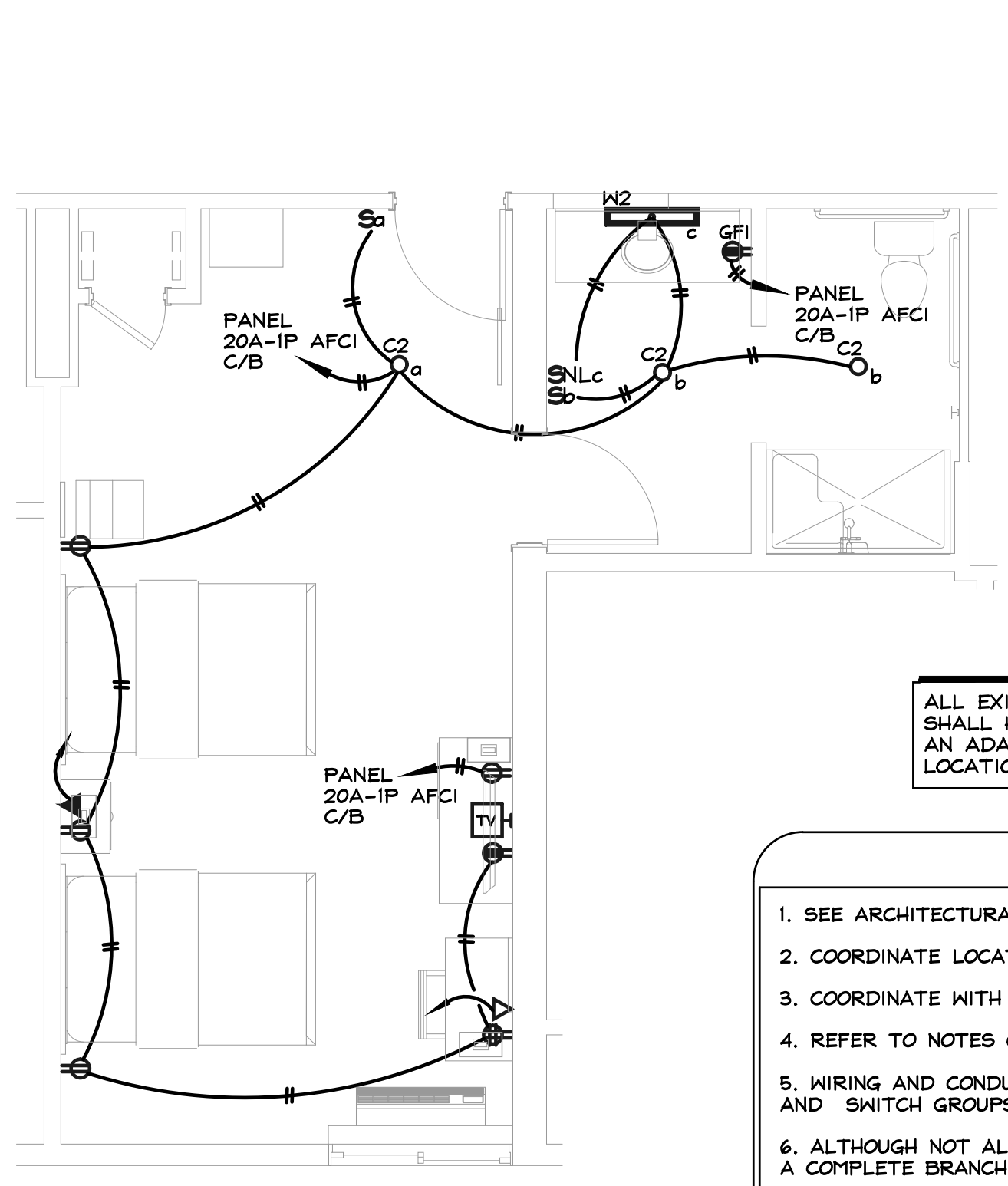


PART PLAN • GUESTROOM  
**ACC DOUBLE**  
 1/4" = 1'-0"



PART PLAN • GUESTROOM  
**ACC EXTENDED KING SUITE**  
 1/4" = 1'-0"



PART PLAN • GUESTROOM  
**ACC DOUBLE/DOUBLE**  
 1/4" = 1'-0"

ALL EXISTING ACCESSIBLE GUESTROOMS SHALL HAVE THE CONTROLS MODIFIED TO AN ADA APPROPRIATE HEIGHT AND LOCATION.

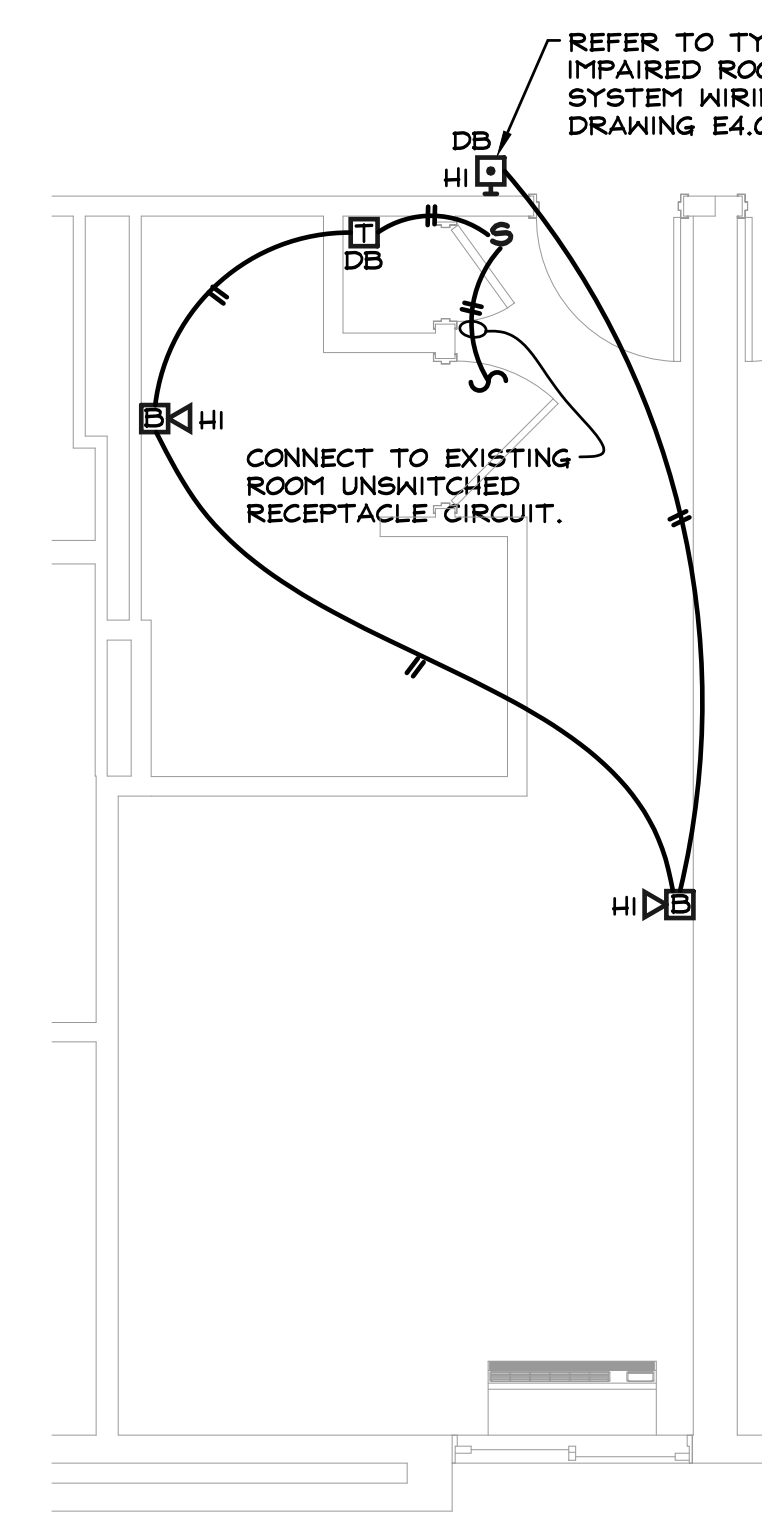
INFORMATION ON HEARING IMPAIRED PART PLANS IS IN ADDITION TO THE TYPICAL GUESTROOM ELECTRICAL INFORMATION

**TYPICAL UNIT PLAN NOTES**

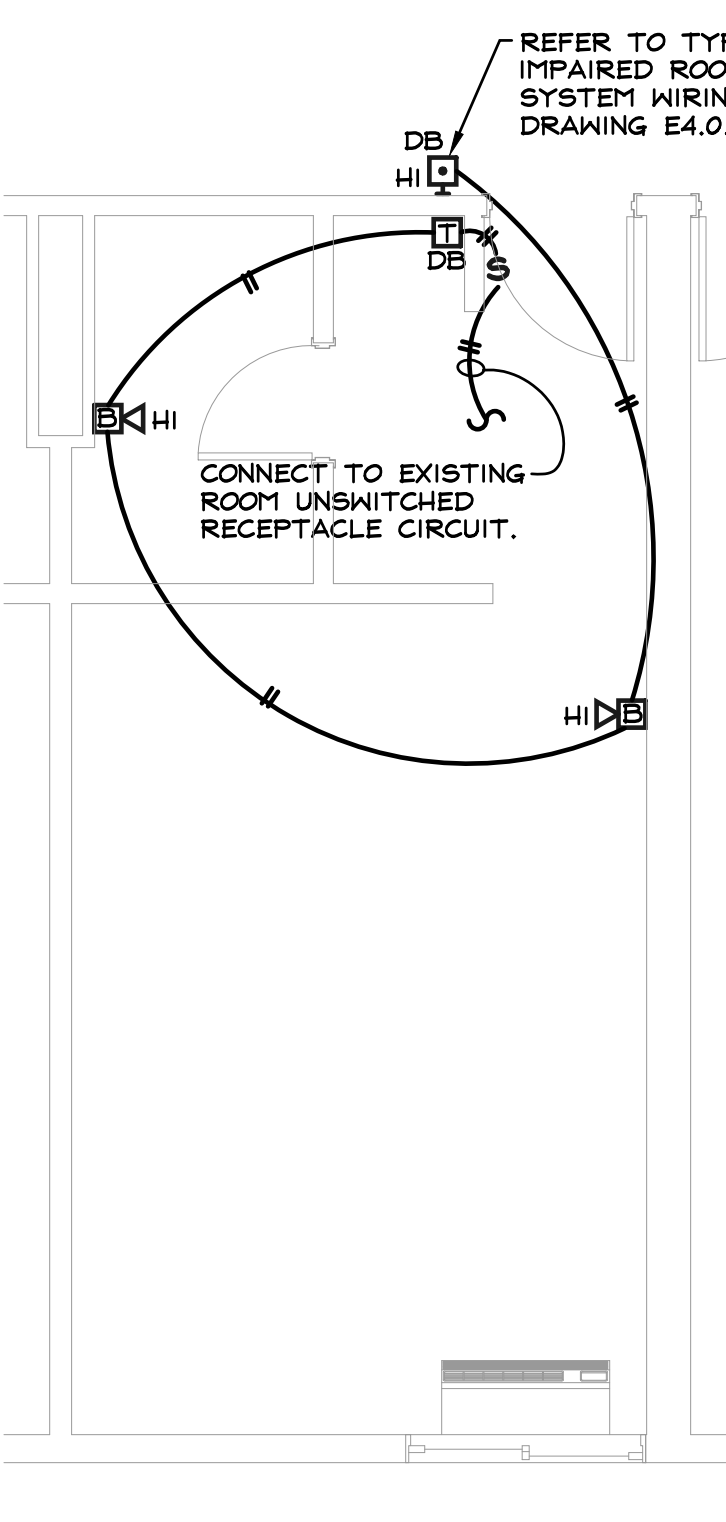
- SEE ARCHITECTURAL/INTERIOR DESIGN PLANS AND ELEVATIONS FOR MOUNTING HEIGHTS AND EXACT LOCATIONS.
- COORDINATE LOCATION OF FIXTURES WITH DRAWINGS AND DETAILS BEFORE INSTALLING.
- COORDINATE WITH MECHANICAL AND PLUMBING DRAWINGS FOR LOCATIONS AND REQUIREMENTS BEFORE INSTALLING.
- REFER TO NOTES ON BRANCH CIRCUIT SIZING ON DRAWING E0.1.
- HIRING AND CONDUIT SHALL BE REQUIRED BETWEEN ALL LIGHTING FIXTURES AND SWITCHING AS PER CIRCUIT NUMBER'S AND SWITCH GROUPS INDICATED.
- ALTHOUGH NOT ALL BRANCH CIRCUIT WIRING IS SHOWN ON THESE PLANS, IT IS THE INTENT OF THESE DRAWINGS, THAT A COMPLETE BRANCH WIRING SYSTEM SHALL BE FURNISHED AND INSTALLED IN ACCORDANCE WITH THE SPECIFICATION.
- PROVIDE INDIVIDUAL NEUTRAL CONDUCTORS WITH EACH 120V RECEPTACLE CIRCUIT.
- ALL 120V, 15 AMPERE AND 20 AMPERE RECEPTACLES INSTALLED IN GUESTROOMS AND GUEST SUITES SHALL BE UL LISTED AS TAMPER RESISTANT RECEPTACLES.
- REFER TO MECHANICAL PLANS FOR EXACT LOCATION OF ALL HVAC EQUIPMENT.
- ELECTRICAL CONTRACTOR SHALL REVIEW SIMILAR AND MIRROR IMAGE TYPE UNITS AND PROVIDE ELECTRICAL DEVICES, C/B'S AND BRANCH CIRCUITRY REQUIRED ABOVE AND BEYOND THE TYPICAL 1/4" SCALE UNIT IT IS SIMILAR TO.
- GARBAGE DISPOSAL SWITCHING PNEUMATIC PUSH BUTTON MOUNTED IN COUNTER TOP (BY OTHERS).
- RUN POWER CONDUIT IN SLAB GROUND FLOOR KITCHEN ISLANDS (TYPICAL).
- PROVIDE ELECTRICAL OUTLET DEVICE PLATE GASKETS IN ALL WIRING DEVICE BOXES INSTALLED IN WALLS SEPARATING CONDITIONED AND UNCONDITIONED SPACES. INSULATION CONTRACTOR SHALL PROVIDE 1" OF FOAM INSULATION AROUND AND BEHIND ALL WIRING DEVICE BOXES INSTALLED IN DWELLING UNIT PERIMETER WALLS AND DEMISING WALLS.
- ALL DWELLING UNIT SWITCHES SHALL BE LARGE SIZE ROCKER TYPE.

**ACCESSIBLE ROOM PLAN NOTES**

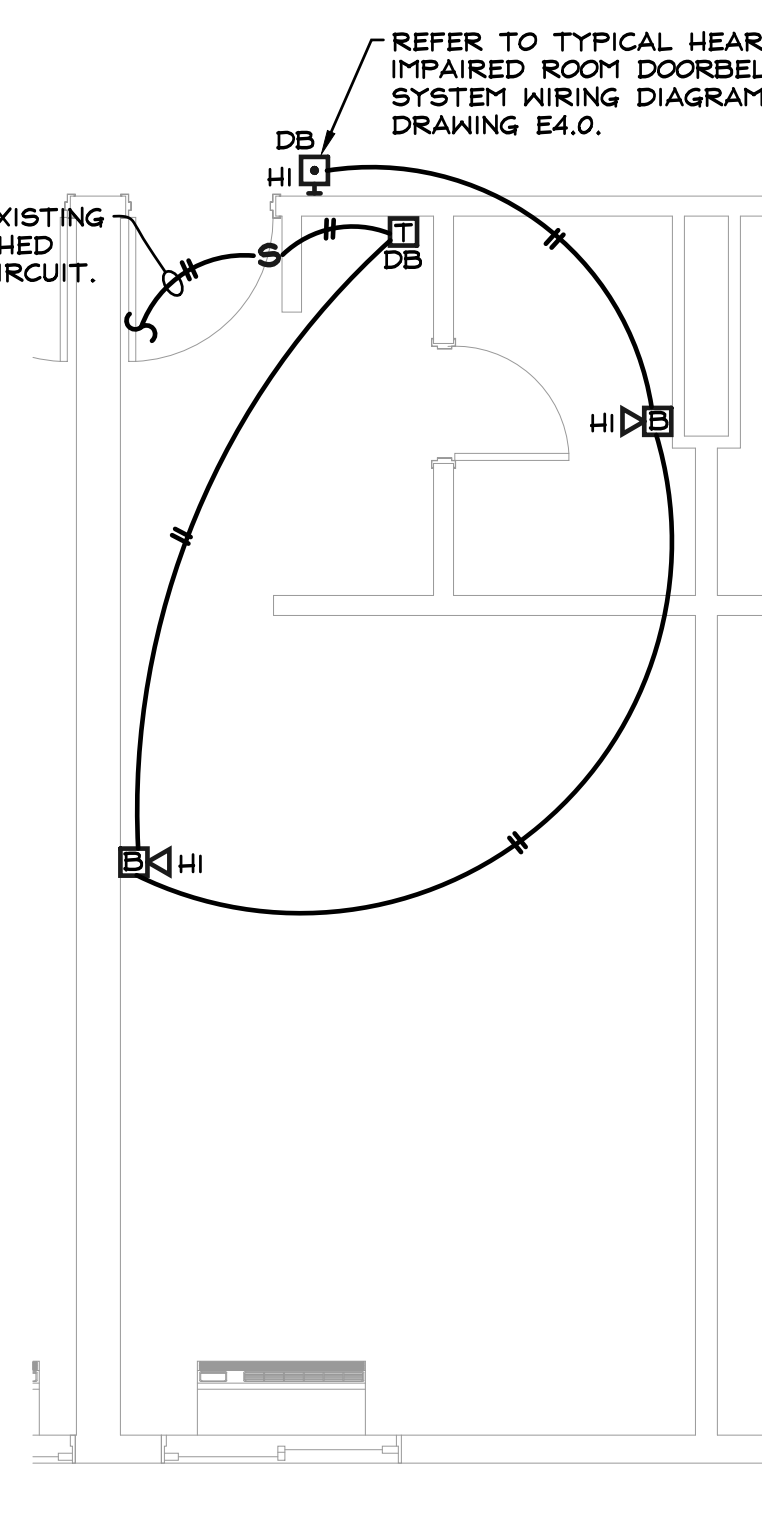
- ALL LOAD CENTER CIRCUIT BREAKERS SHALL BE LOCATED BETWEEN 30" A.F.F. AND 48" A.F.F.
- ALL BUZZERS/BELLS INTERCOM SYSTEMS AND LOAD CENTERS SHALL COMPLY WITH ADAG FORWARD REACH OR ADAG SIDE REACH.
- ELECTRICAL OUTLETS, TELEPHONE OUTLETS, CABLE TV JACKS, AND OTHER WALL OUTLETS SHALL BE LOCATED BETWEEN 15 INCHES AND 48 INCHES ABOVE THE FLOOR, MEASURED AT THE CENTERLINE OF THE LOWEST RECEPTACLE. ALL OUTLETS SHALL BE LOCATED NO LESS THAN 18 INCHES FROM THE INTERIOR CORNERS. WHEN OUTLETS ARE LOCATED ON WALLS ABOVE COUNTERS OR OTHER FIXTURES THAT ARE 22 INCHES OR GREATER IN DEPTH, THEY SHALL BE NO HIGHER THAN 44 INCHES. IN GROUP 1 AND 2 UNITS, AT LEAST ONE ELECTRICAL OUTLET MUST BE PROVIDED ON THE SAME WALL AS THE TELEPHONE OUTLET AND THE DOOR CHIME. WHEREVER EXTERIOR DECKS, PATIOS AND BALCONIES ARE PROVIDED, AN EXTERIOR ELECTRICAL OUTLET SHALL ALSO BE PROVIDED.
- THE HIGHEST POSITION OF THE OPERABLE PARTS OF ANY CONTROL, DISPENSER, RECEPTACLE, OR OTHER OPERABLE EQUIPMENT SHALL BE LOCATED WITHIN THE ZONE OF REACH AS DEFINED IN ADAG DEFINITIONS.
- GARBAGE DISPOSALS, WHEN PROVIDED, SHALL BE CONTROLLED BY SWITCHES UNDER THE COUNTER AT THE FRONT.
- ALL CONTROLS AND SWITCHES SHALL COMPLY WITH ADAG CONTROLS REQUIREMENTS



HEARING IMPAIRED PART PLAN •  
**ACC KING (TYP)**  
 1/4" = 1'-0"



HEARING IMPAIRED PART PLAN •  
**KING (TYP)**  
 1/4" = 1'-0"



HEARING IMPAIRED PART PLAN •  
**DOUBLE/DOUBLE (TYP)**  
 1/4" = 1'-0"