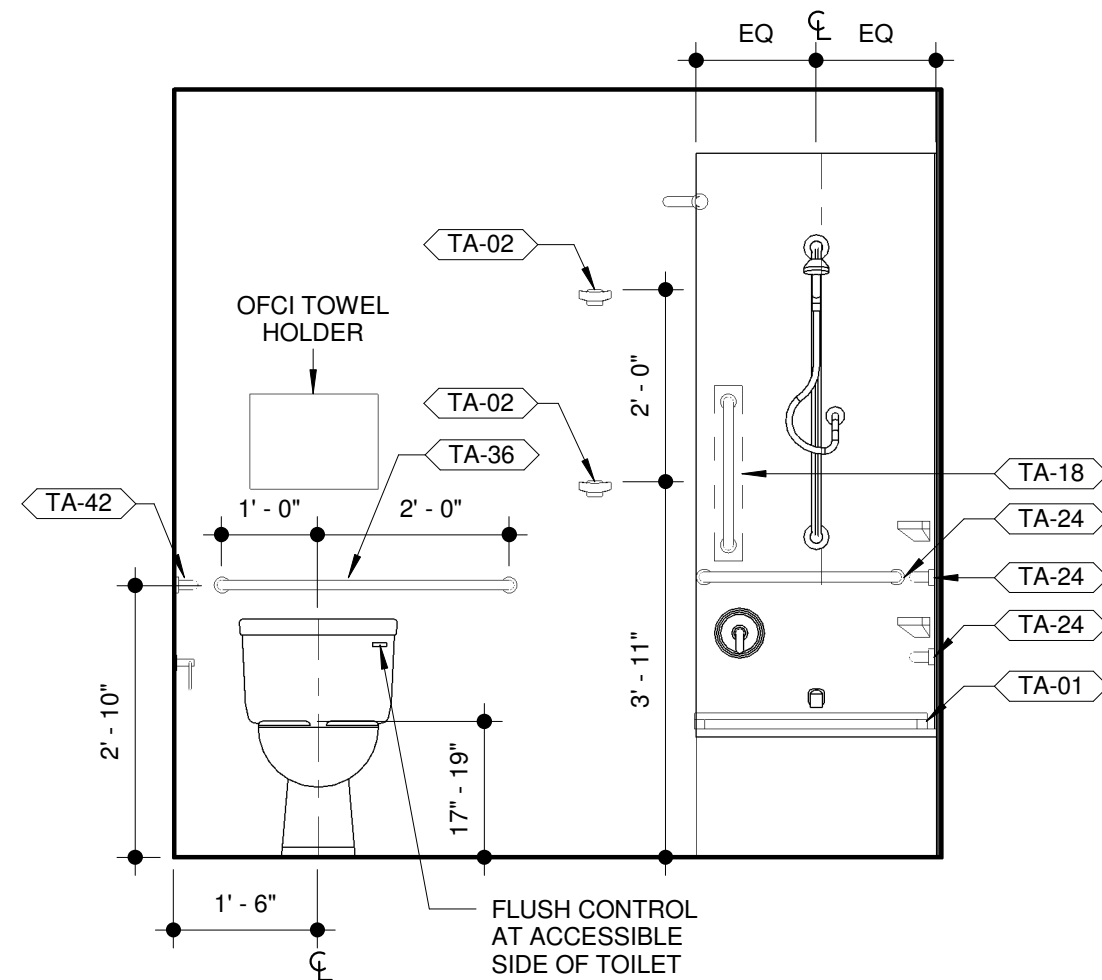
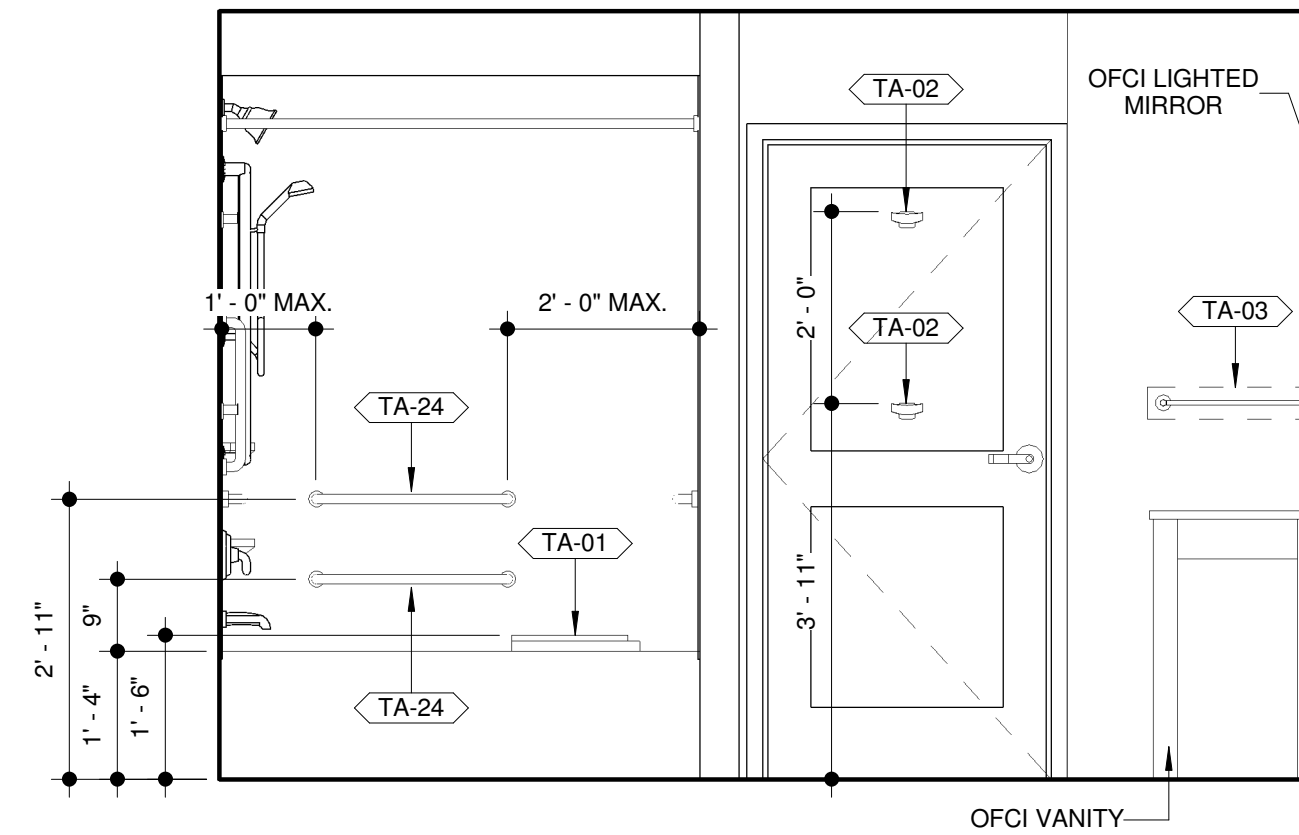


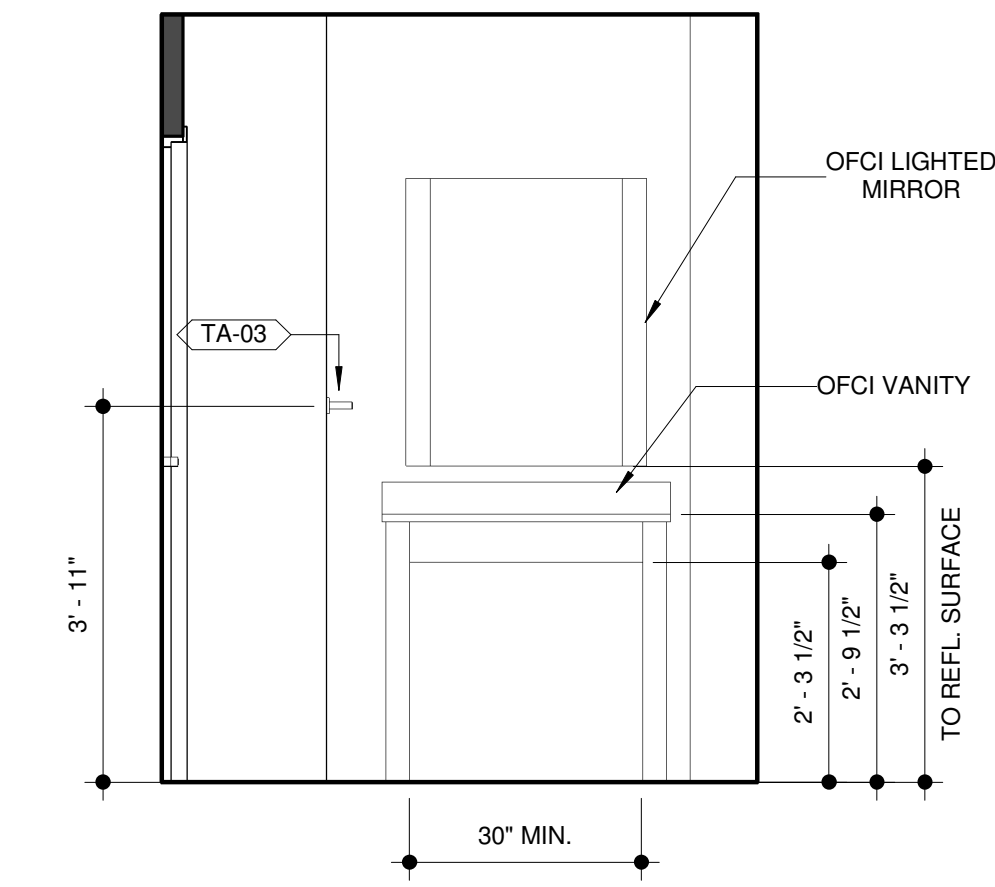
D1 INT ELEV - SIDE WALL
 1/2" = 1'-0"



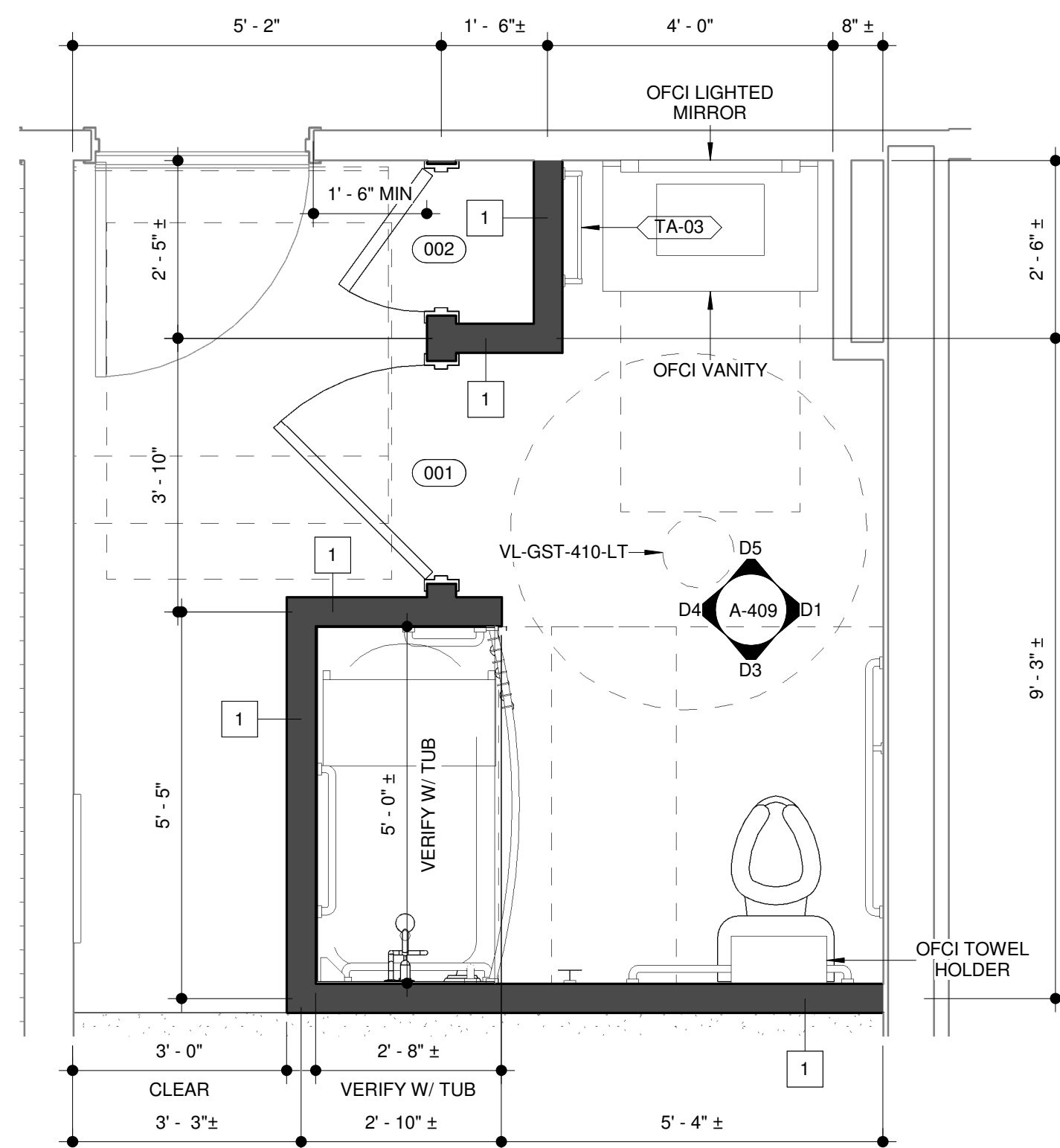
D3 INT ELEV - TOILET WALL
 1/2" = 1'-0"



D4 INT ELEV - ENTRY WALL
 1/2" = 1'-0"



D5 INT ELEV - VANITY WALL
 1/2" = 1'-0"



A1 ENLARGED GUEST BATHROOM PLAN - ACC KING SUITE
 1/2" = 1'-0"

NOTE:
 TOILET ACCESSORIES ARE OFCI SHOP DRAWINGS & PRODUCT DATA FOR TOILET ACCESSORIES THAT ARE REQUIRED FOR ACCESSIBILITY, INCLUDING BUT NOT LIMITED TO GRAB BARS, TUB/SHOWER SEATS, ETC. ARE TO BE SUBMITTED TO ARCHITECT FOR APPROVAL.

TOILET ACCESSORY SCHEDULE	
Type Mark	Description
TA-01	ADA SHOWER SEAT
TA-02	ROBE HOOK
TA-03	TOWEL BAR - 18"
TA-04	Toilet Paper Holder, Chrome
TA-05	36" X 36" ADA SHOWER SEAT
TA-12	GRAB BAR - 12"
TA-18	GRAB BAR - 18"
TA-24	GRAB BAR - 24"
TA-36	GRAB BAR - 36"
TA-42	GRAB BAR - 42"

MILLWORK NOTES:

- MILLWORK SHOWN IS DIAGRAMATIC ONLY. MILLWORK DESIGN AND DRAWINGS ARE BY OWNER'S VENDOR.
- CONTRACTOR TO PROVIDE SHOP DRAWINGS TO ARCHITECT FOR APPROVAL.
- PROVIDE SEALANT AT ALL DISSIMILAR MATERIALS.
- COORDINATE ALL MILLWORK WITH OWNERS EQUIPMENT.

GENERAL GUEST BATHROOM NOTES:

- VERIFY MOUNTING HEIGHTS W/ ADA & MANUFACTURERS RECOMMENDATIONS.
- PROVIDE BLOCKING IN WALLS FOR ALL TOILET ACCESSORIES, FIXTURES, ARTWORK, MIRRORS, ETC.
- MAINTAIN INTEGRITY OF FIRE RATING WHERE ACCESSORIES ARE IN RATED WALLS.
- PROVIDE SEALANT AT ALL DISSIMILAR MATERIALS, SUCH AS VANITIES, BACKSPASHES, TUB SURROUNDS, TILE TRANSITIONS AND WALL FINISH TRANSITIONS, ETC.
- IN ACCESSIBLE BATHROOMS, OFFSET HOT WATER AND WASTE PIPES UNDER SINK THE TO THE BACK. PROVIDE PIPE INSULATION ON ALL EXPOSED PLUMBING SUPPLY AND WASTE LINES. PIPE INSULATION TO BE TRUBRO PIPE INSULATION. ALL OTHER BATHROOMS TO HAVE BRIGHT CHROME SUPPLY AND WASTE LINES.
- ACCESSORY STYLES, MATERIALS AND FINISHES ARE TO COORDINATE WITH BATH FIXTURES, G.C. TO VERIFY ACCESSORY STYLES, MATERIALS AND FINISHES W/ OWNER PRIOR TO ORDERING.
- ALL GYPSUM WALL & CEILING BOARD IN BATHROOMS TO BE MOISTURE RESISTANT.
- MAINTAIN INTEGRITY OF FIRE RATING WHERE TUBS/SHOWERS ARE IN RATED WALLS.
- PROVIDE 3-1/2" SOUND ATTENUATION INSULATION ABOVE ALL GUESTBATH ROOM CEILINGS.
- PROVIDE CONTINUOUS CRACK SUPPRESSION MEMBRANE @ ALL TILE FLOOR LOCATIONS.
- REFER TO GENERAL ACCESSIBILITY GUIDELINES ON THE G SHEETS, FOR MOUNTING HEIGHTS NOT INDICATED IN PLANS.
- ALIGN TILE BASE GROUT JOINTS WITH TILE FLOOR GROUT JOINTS.
- PROVIDE WATERPROOFING BELOW ALL UPPER FLOOR GUEST BATHROOMS EQUAL TO LATICRETE HYDROBAN.