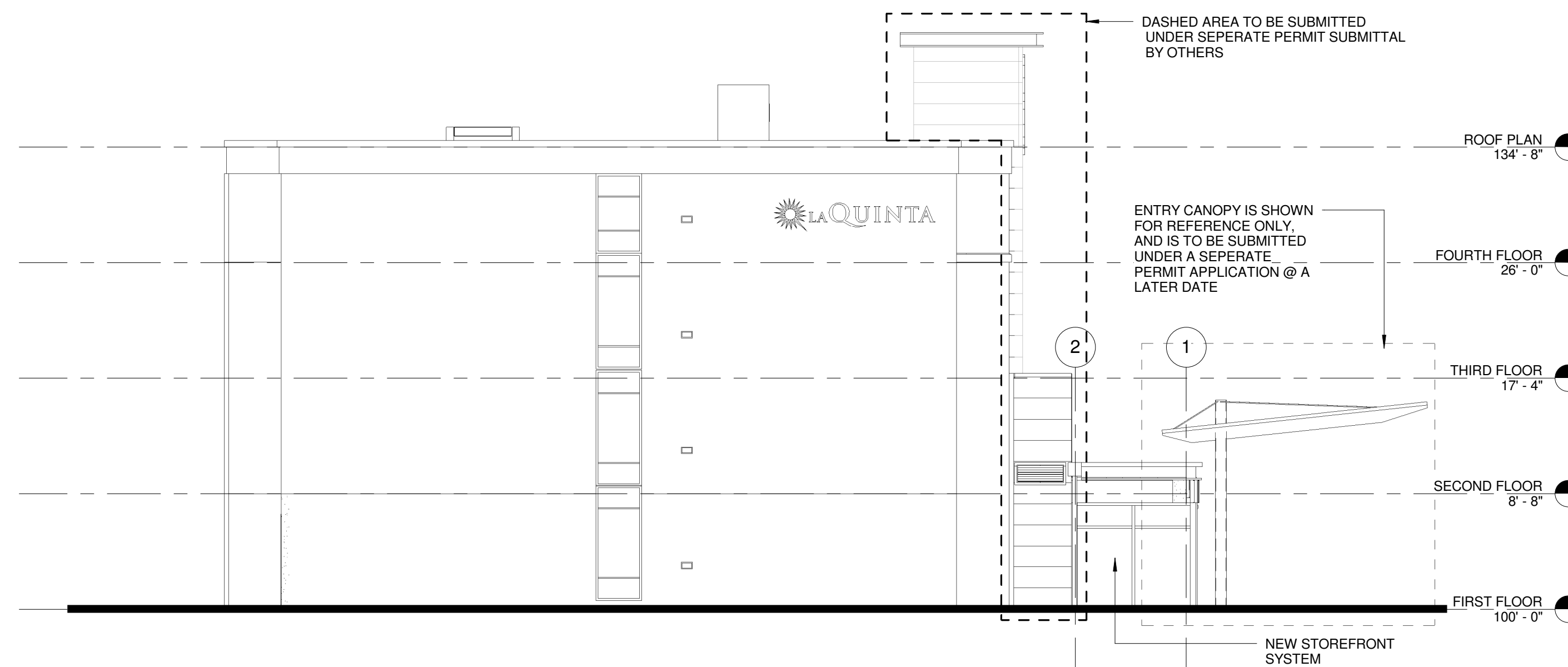


D1 EAST ELEVATION
 1/8" = 1'-0"

EIFS NOTE:
 COORDINATE ANY NEW MECHANICAL PENETRATIONS THROUGH THE EXTERIOR ENVELOPE WITH MECHANICAL DRAWINGS. PENETRATIONS THROUGH EIFS SHALL BE PER EIFS MANUFACTURER'S WRITTEN INSTRUCTIONS & DETAILS.



A2 SOUTH ELEVATION
 1/8" = 1'-0"