

- 2010 ADA DESIGN STANDARDS

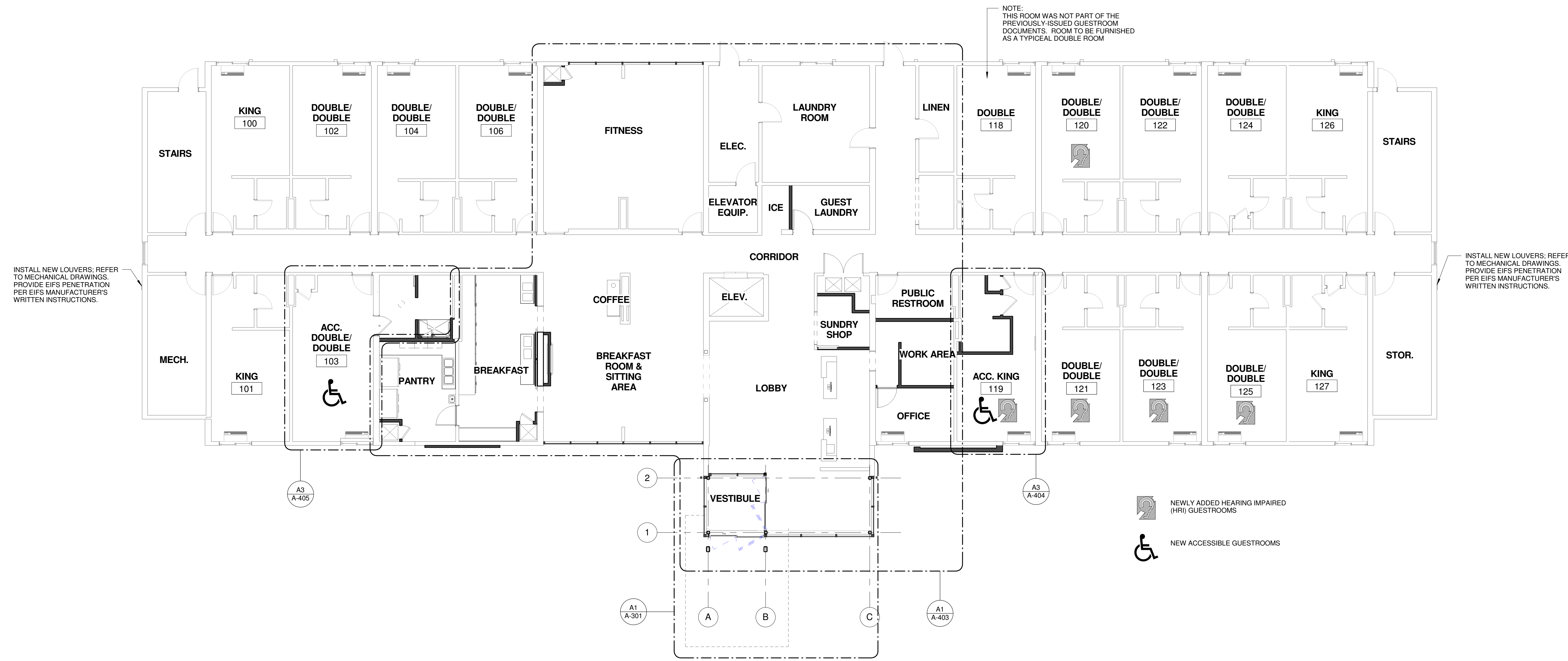
ROOM TYPE	QTY	PCT
KING	36 (1 ACC)	38%
DOUBLE/DOUBLE	52 (1 ACC)	52%
DOUBLE	9 (2 ACC)	9%
KING SUITE	1 (1 ACC)	1%
TOTAL	100 (5 ACC)	100.0%

**GUESTROOM DATA**

5 ACCESSIBLE GUESTROOMS (1 ROLL-IN SHOWER)  
 ADA REQUIRES 5 ACCESSIBLE GUESTROOMS BASED ON 100 TOTAL GUESTROOMS.  
 ADA REQUIRES 9 HRI GUESTROOMS, BASED ON 100 TOTAL GUESTROOMS - 1 INCLUDED IN ACC RMS, 8 ADDITIONAL HRI REQUIRED = 9 TOTAL HRI RMS.  
 TOTAL OF 9 GUESTROOMS WITH COMMUNICATION FEATURES (INCLUDING ACCESSIBLE GUESTROOM) ROOMS 119, 120, 121, 123, 125, 218, 220, 221, 223.

ROOM MATRIX									
	KING	KING 2	DOUBLE/DOUBLE	DOUBLE	DOUBLE 2	ACC KING	ACC KING SUITE	ACC. DBL. DBL.	TOTAL
FIRST FLOOR	4	-	9	1	-	1	-	1	16
SECOND FLOOR	10	1	14	1	-	1	1	-	28
THIRD FLOOR	10	-	15	1	1	1	-	-	28
FOURTH FLOOR	12	-	13	2	1	-	-	-	28
TOTAL	36	1	51	5	2	3	1	1	100

NOTE:  
 THIS ROOM WAS NOT PART OF THE PREVIOUSLY ISSUED GUESTROOM DOCUMENTS. ROOM TO BE FURNISHED AS A TYPICAL DOUBLE ROOM



INSTALL NEW LOUVERS: REFER TO MECHANICAL DRAWINGS. PROVIDE EIFS PENETRATION PER EIFS MANUFACTURER'S WRITTEN INSTRUCTIONS.

INSTALL NEW LOUVERS: REFER TO MECHANICAL DRAWINGS. PROVIDE EIFS PENETRATION PER EIFS MANUFACTURER'S WRITTEN INSTRUCTIONS.

 NEWLY ADDED HEARING IMPAIRED (HRI) GUESTROOMS

 NEW ACCESSIBLE GUESTROOMS

**A1 FIRST FLOOR PLAN**  
 1/8" = 1'-0"