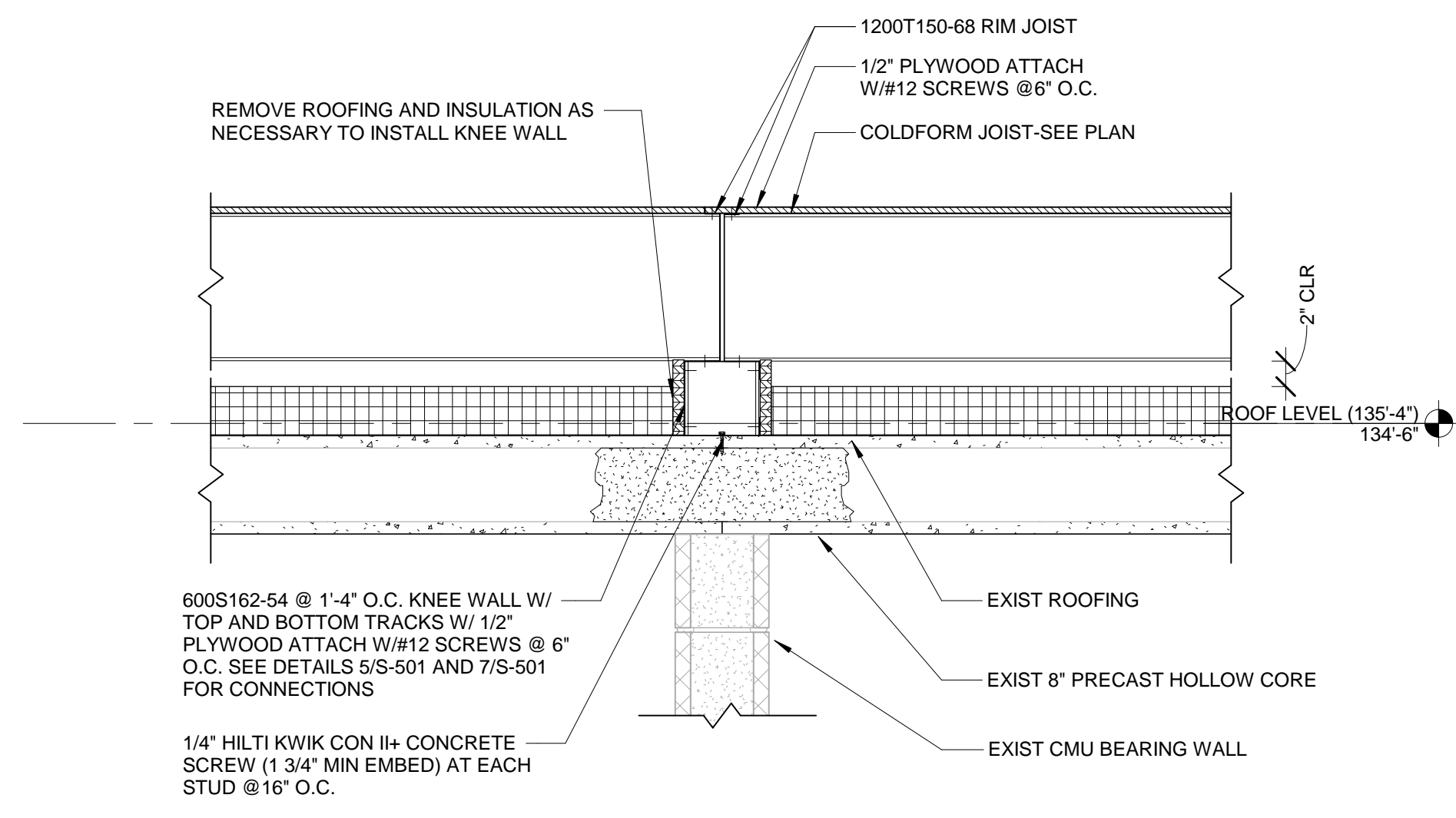
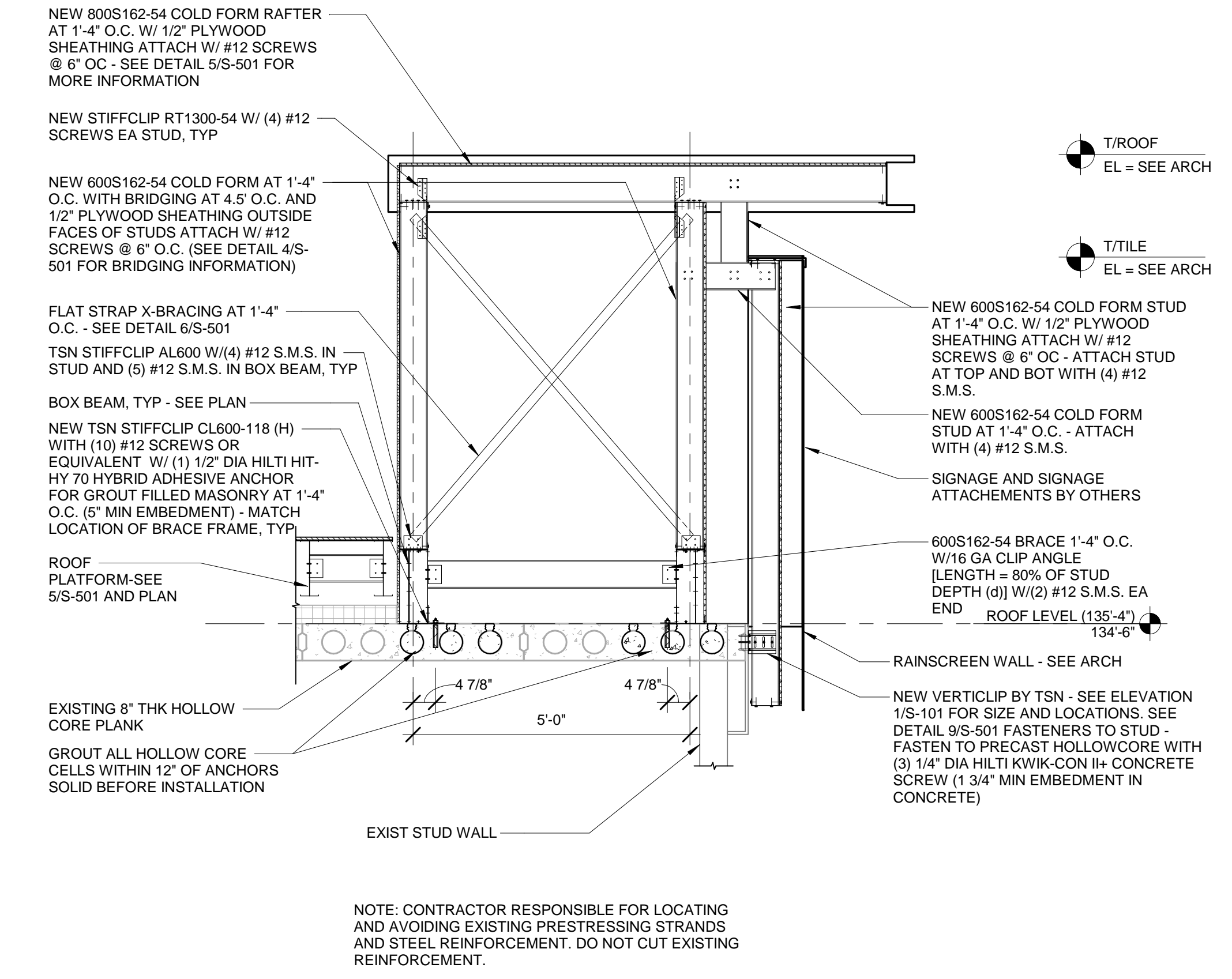


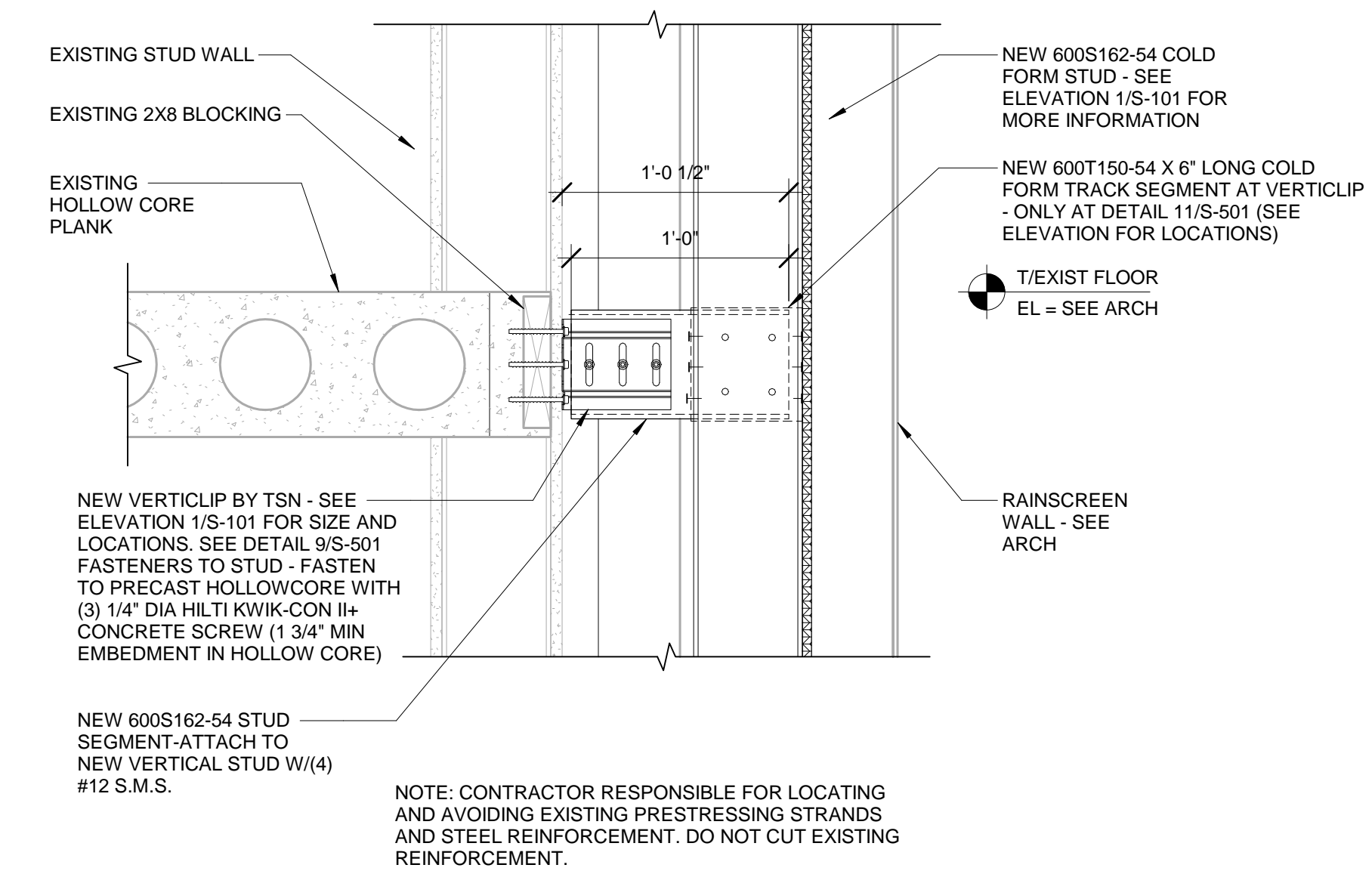
6 TYPICAL DETAIL FOR CONNECTION TO EXISTING STUD WALL
SCALE: 1/2" = 1'-0"



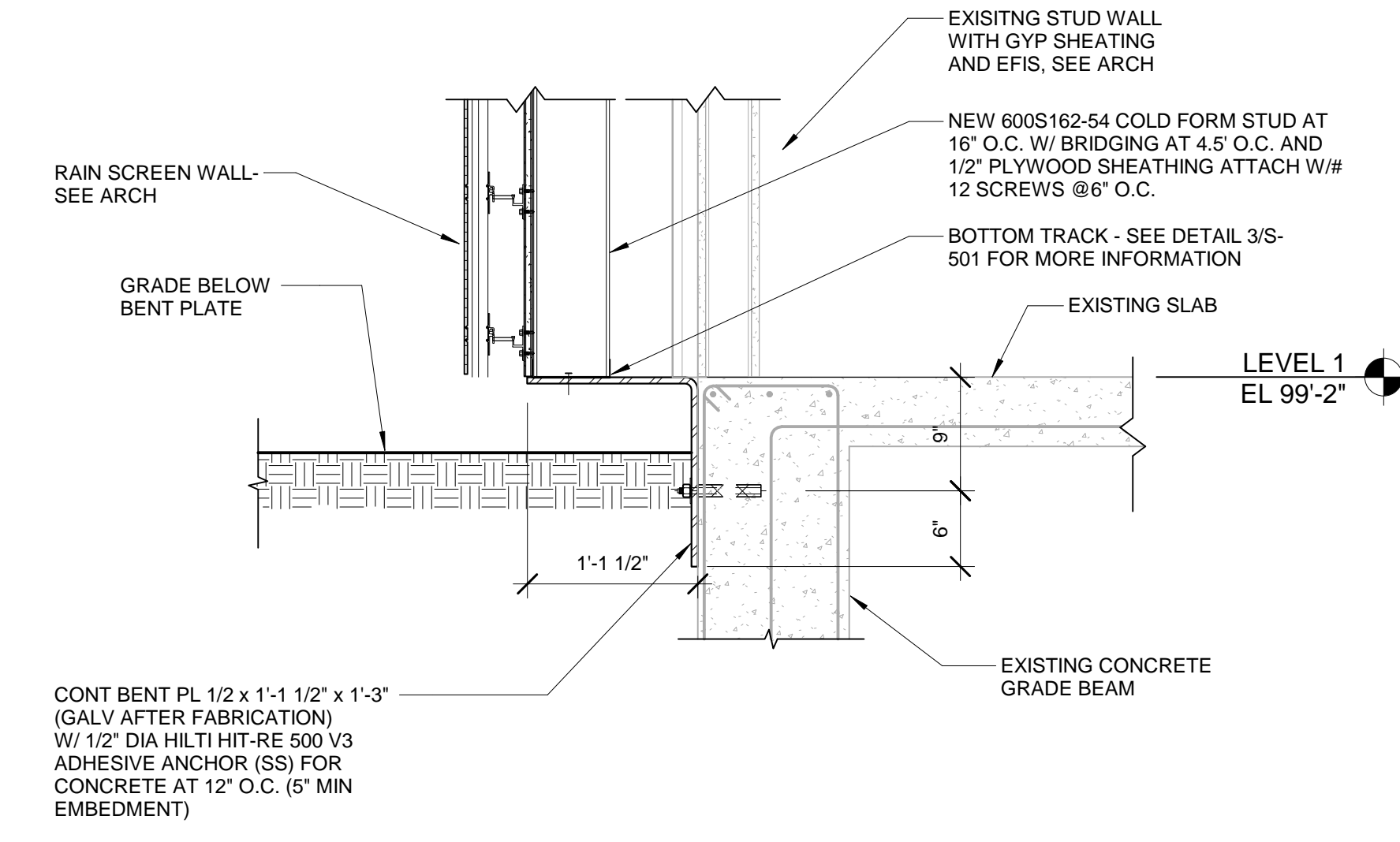
4 DETAIL AT ROOF PLATFORM
SCALE: 1" = 1'-0"



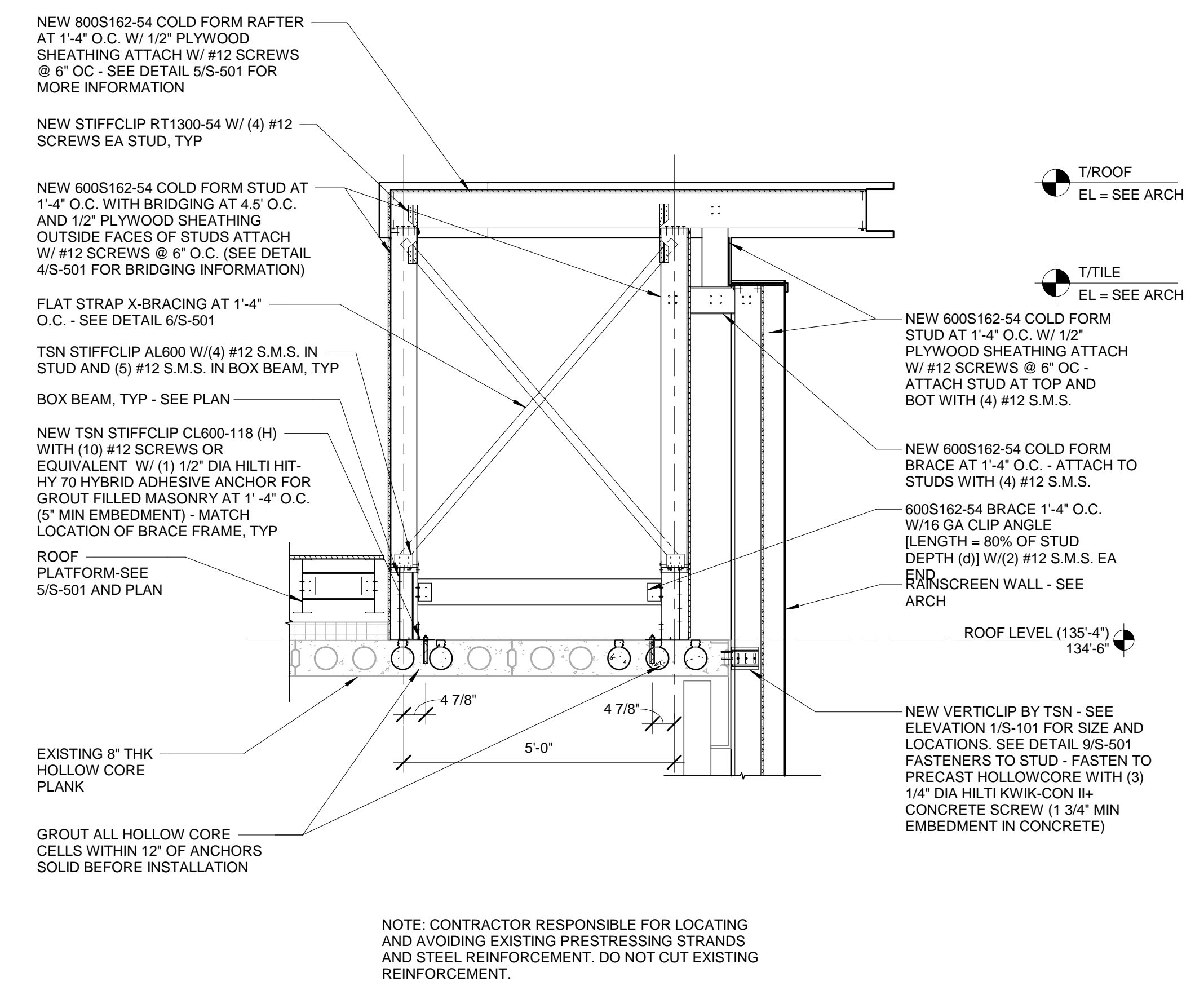
2 SECTION AT TYPICAL FRAME
SCALE: 1/2" = 1'-0"



5 TYPICAL DETAIL FOR CONNECTION TO EXISTING AT FLOOR LEVELS
SCALE: 1/2" = 1'-0"

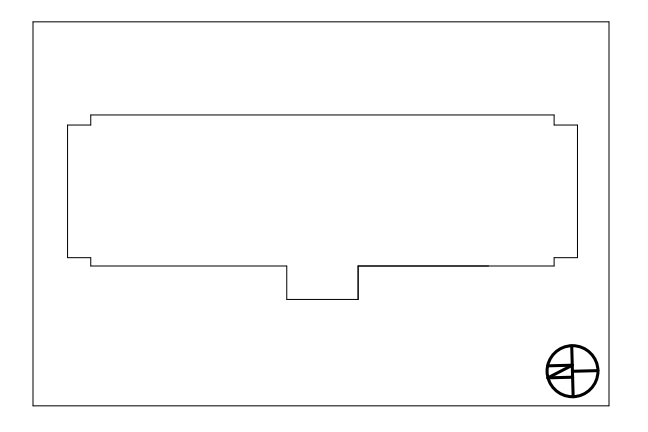


3 TYPICAL SECTION AT WALL FOUNDATION
SCALE: 1" = 1'-0"

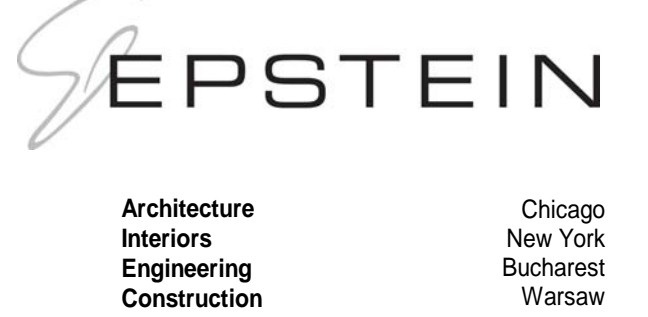


1 SECTION AT TYPICAL FRAME
SCALE: 1/2" = 1'-0"

ALL DIMENSIONS SHOWN TO BE FIELD VERIFIED U.N.O.



NO.	DATE	REVISIONS/ISSUANCES
2	03/15/2017	ISSUED FOR PERMIT
1	02/15/2017	ISSUED FOR PRICING



600 W. Fulton Street
Chicago, IL 60661-1259
T 312.454.9100
www.epsteinglobal.com

PROJECT NUMBER:	16303
PROJECT MANAGER:	DS
ARCH/ENG:	Designer
SCALE:	As indicated
DRAWN BY:	Author
CHECKED BY:	Checker

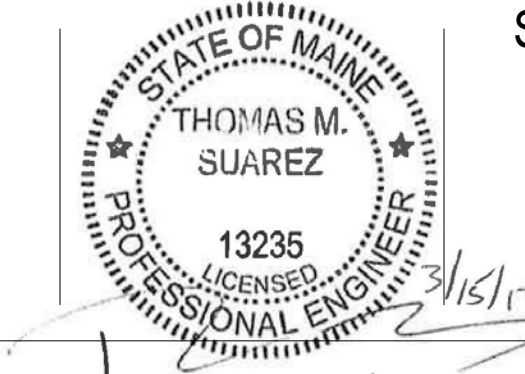
SECTIONS

Structural Engineer EPSTEIN
600 West Fulton
Chicago, IL 60661
312.454.9100

Architect EPSTEIN
600 West Fulton
Chicago, IL 60661
312.454.9100

Owner LQ ACQUISITION PROPERTIES, LLC.
900 Hidden Ridge
Irving, Texas 75038
214.462.6600

Project Address La Quinta Inn No. 2049
340 Park Ave
Portland, ME 04102



S-500

©2016 A. Epstein and Sons International, Inc. All rights reserved.