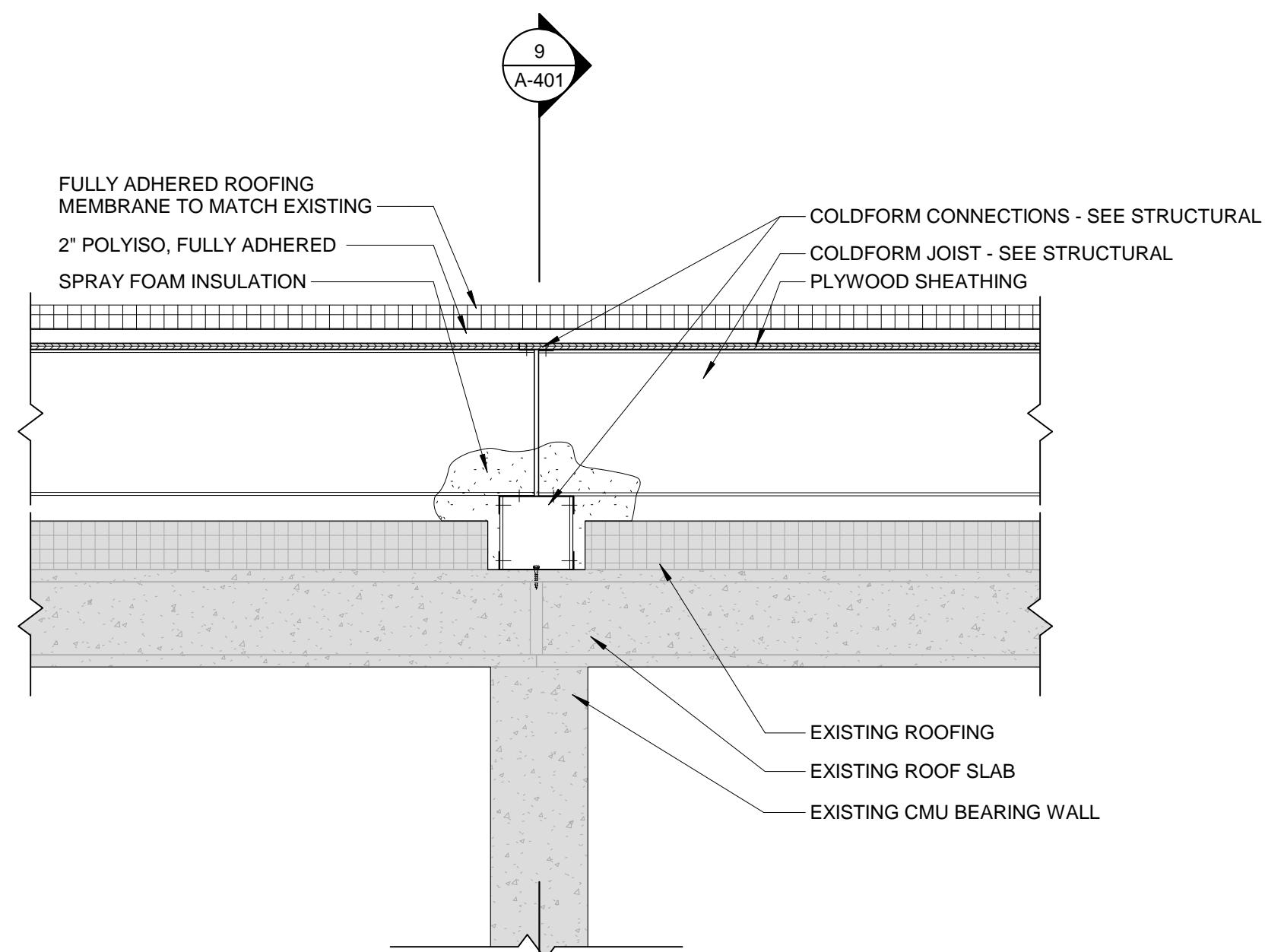


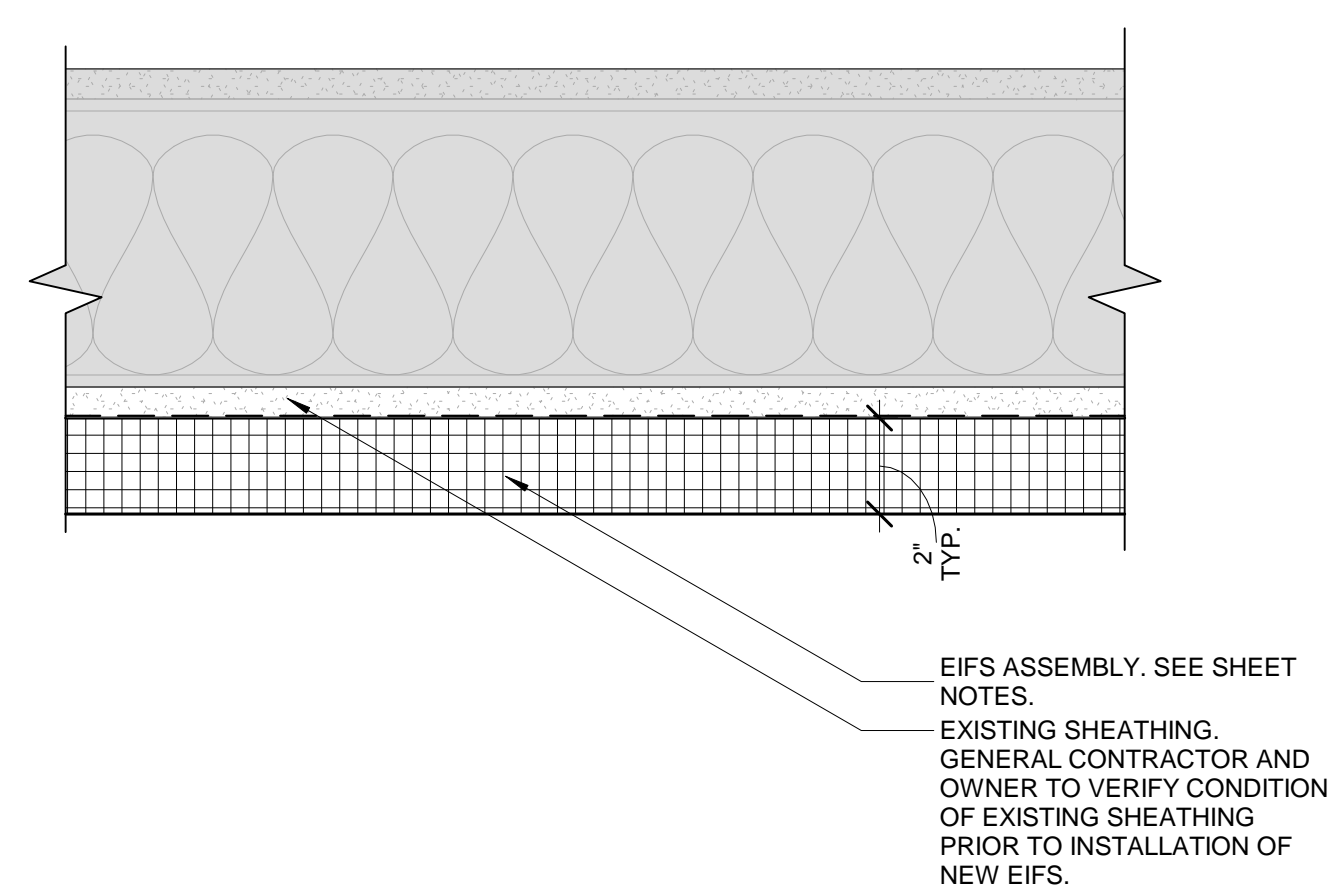
NOTE: SEE DETAIL 5/A-401 FOR CONNECTION DETAIL ADJACENT TO EXISTING ROOF.

9 PARAPET BOX BASE DETAIL
 SCALE: 3" = 1'-0"

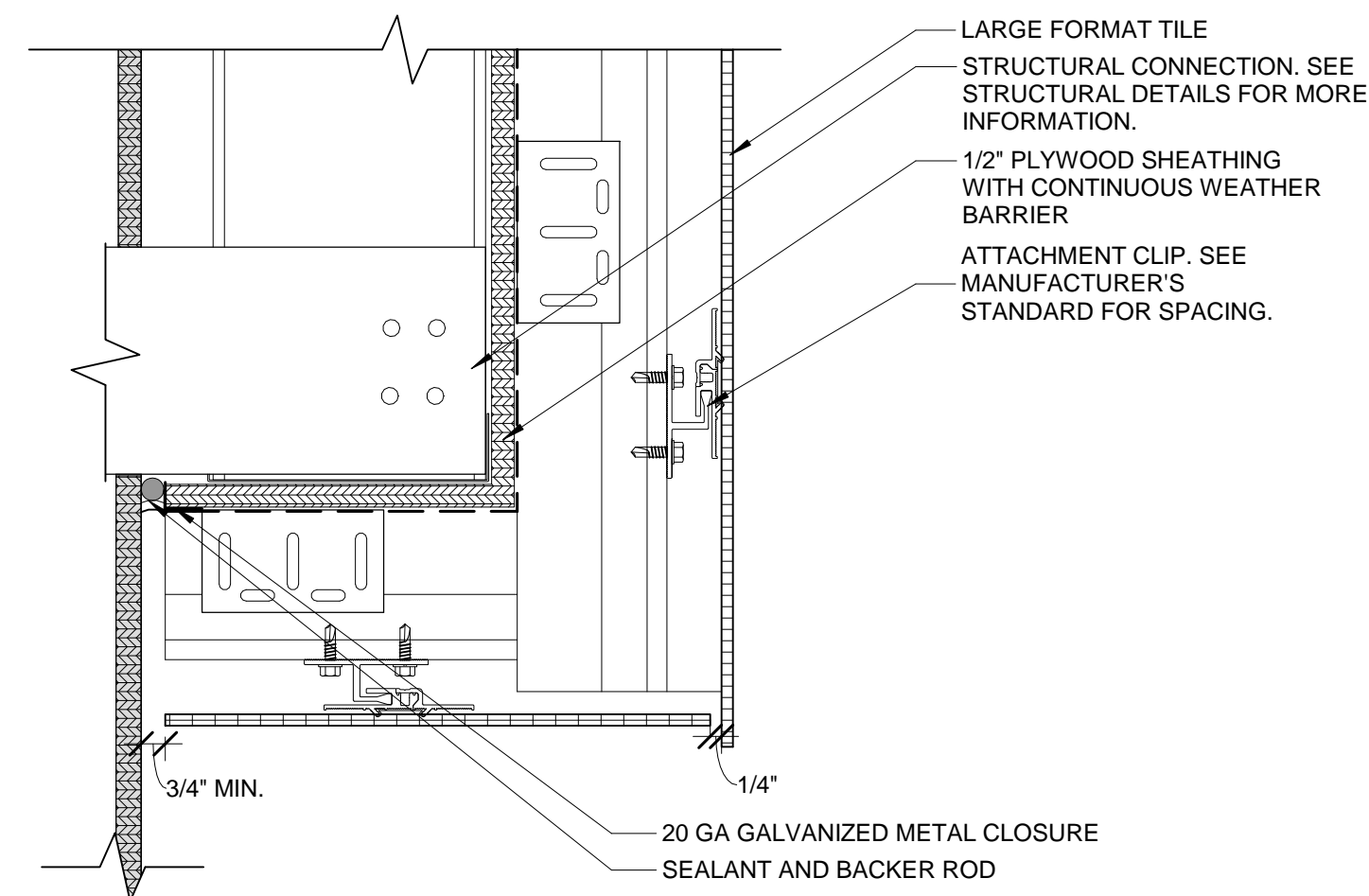


NOTE: CONTRACTOR TO CONFIRM EXISTING ROOF ASSEMBLY.

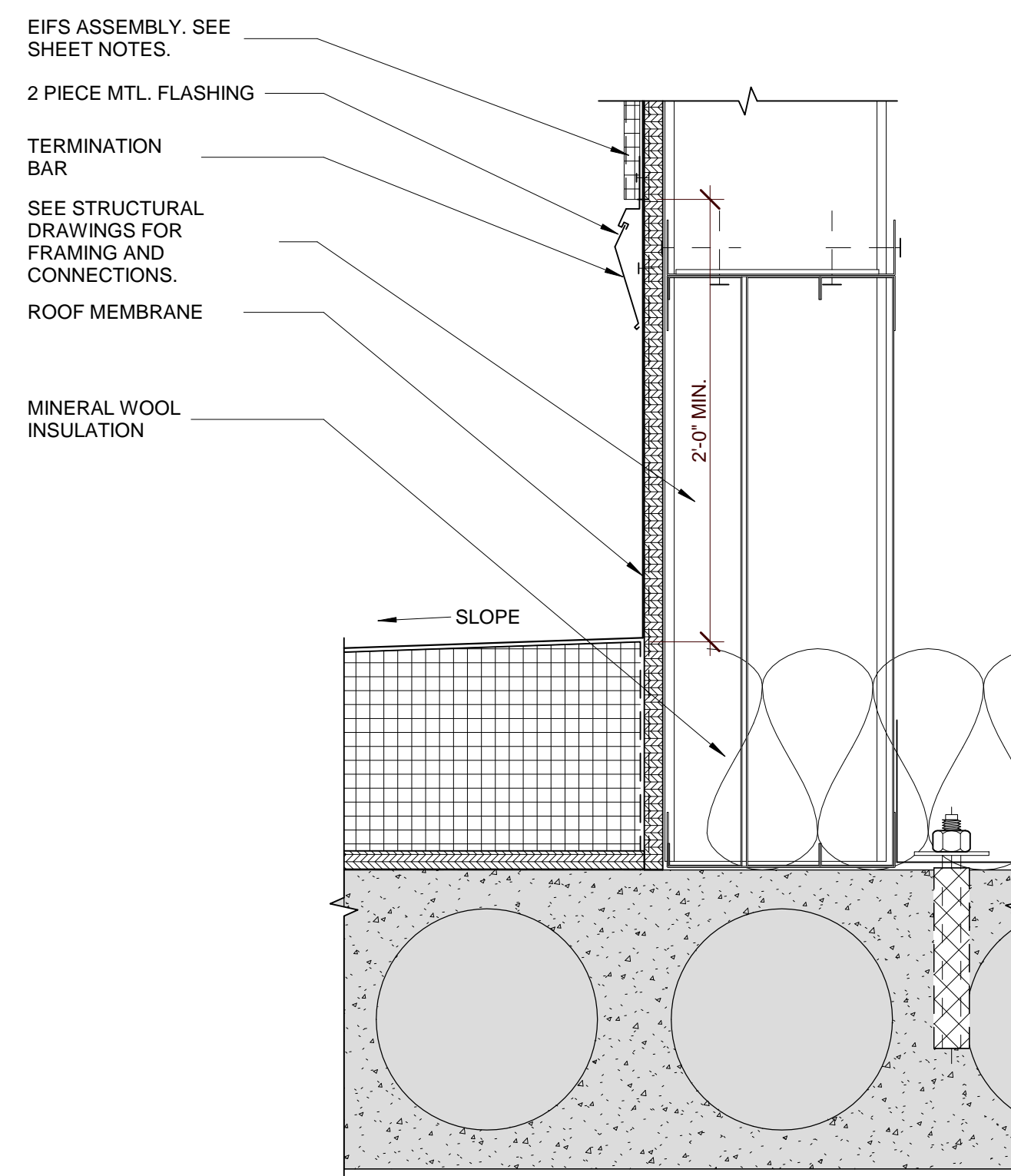
8 ROOF DETAIL
 SCALE: 1" = 1'-0"



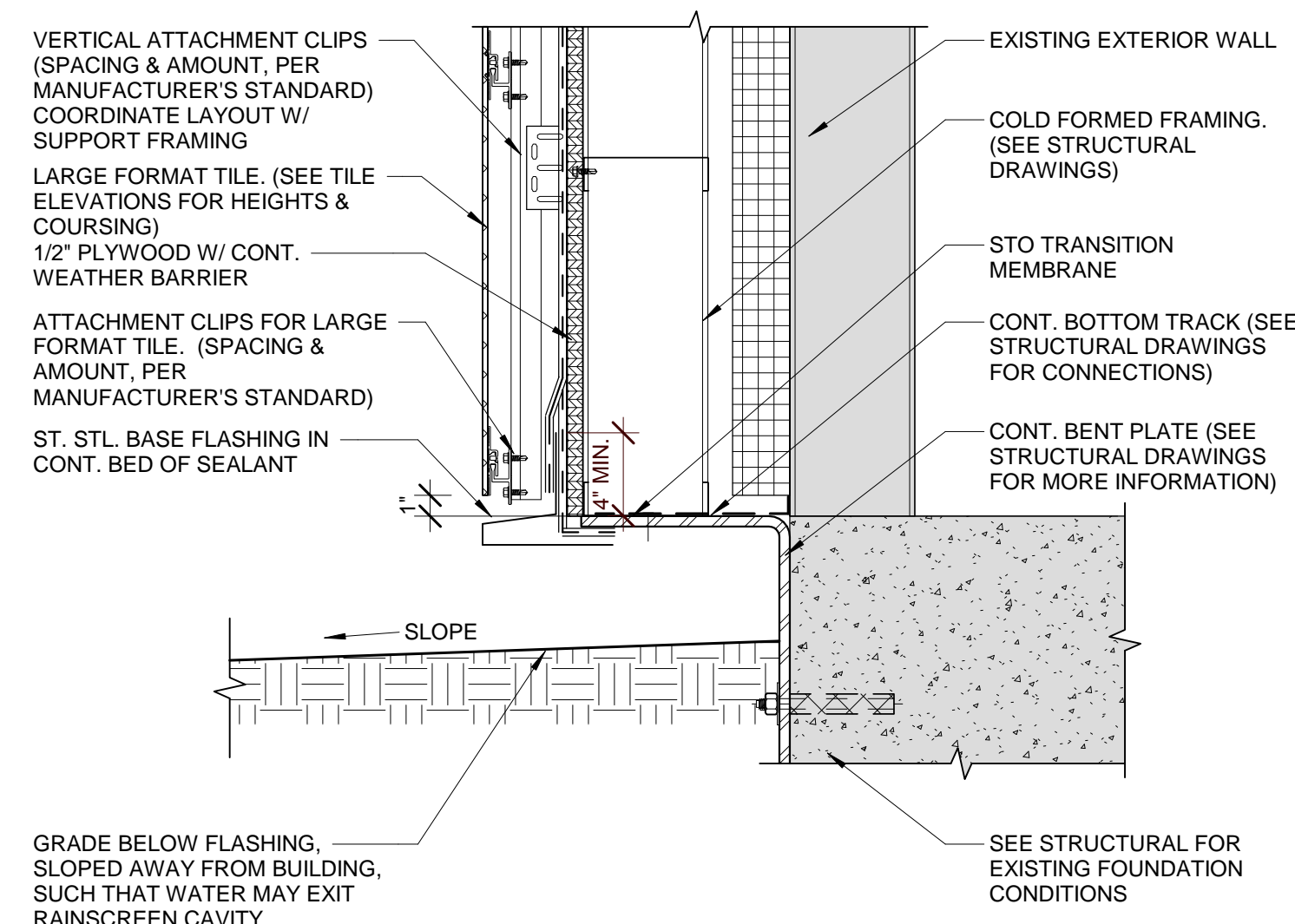
7 EIFS ASSEMBLY DETAIL
 SCALE: 3" = 1'-0"



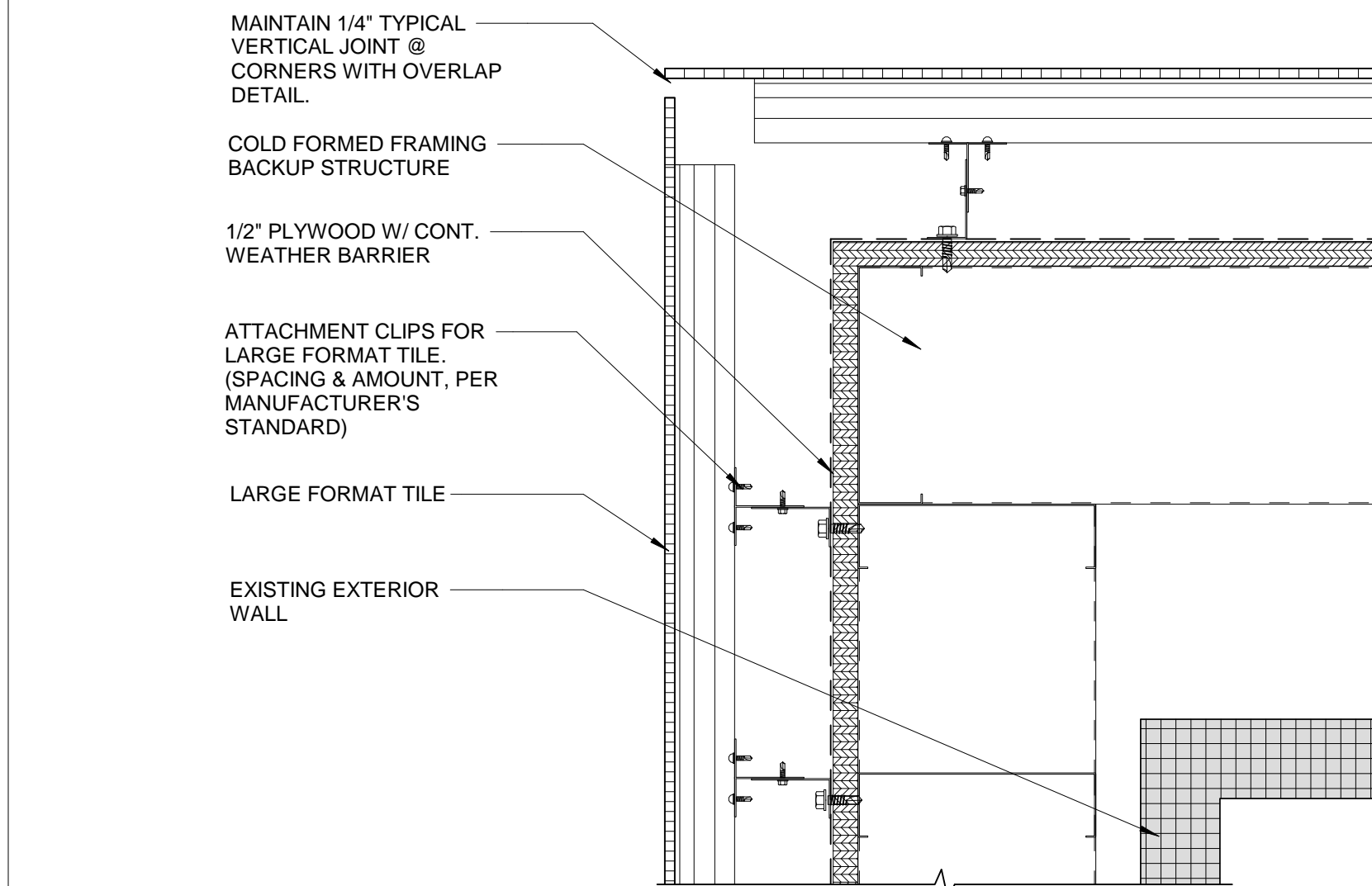
6 RAINSCREEN SOFFIT DETAIL
 SCALE: 3" = 1'-0"



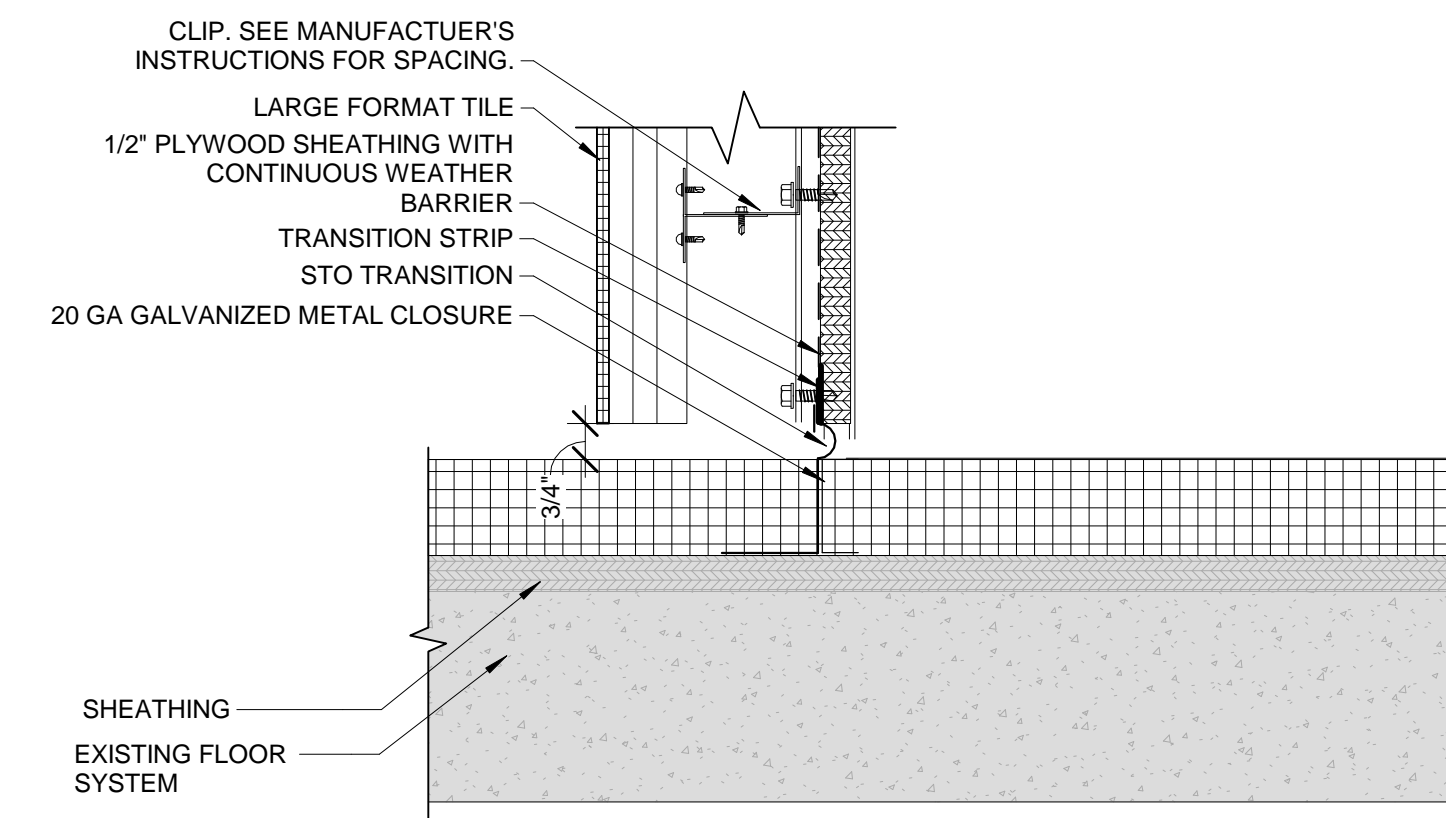
5 PARAPET BOX BASE DETAIL
 SCALE: 3" = 1'-0"



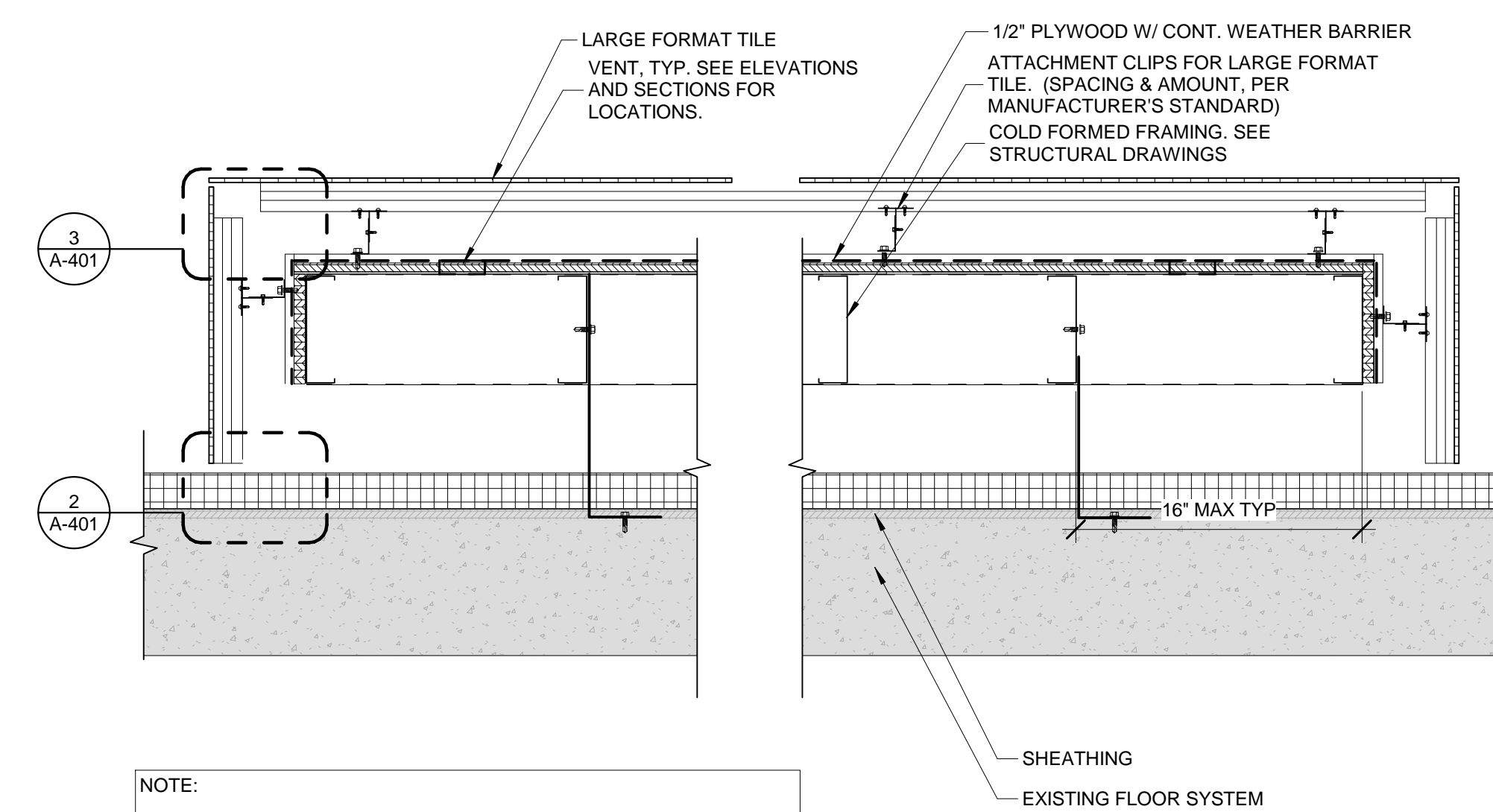
4 RAINSCREEN BASE DETAIL
 SCALE: 1 1/2" = 1'-0"



3 RAINSCREEN PLAN CORNER DETAIL
 SCALE: 3" = 1'-0"



2 RAINSCREEN PLAN CONNECTION
 SCALE: 3" = 1'-0"

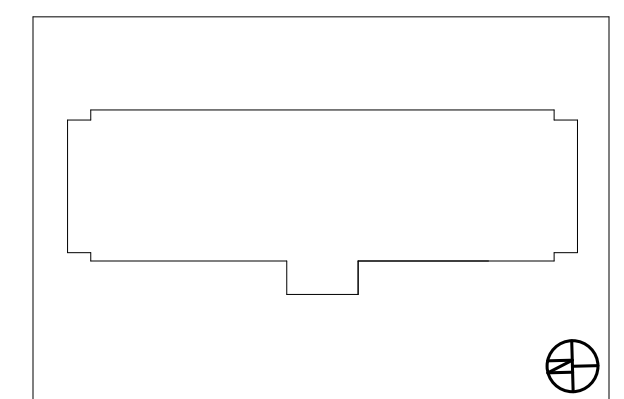


NOTE:
 SEE A-310 FOR OVERALL DIMENSIONS.
 DIMENSIONS BASED ON 4 3/4" FROM FACE OF PLYWOOD TO EXTERIOR FACE OF TILE. ADJUST DIMENSIONS IF SMALLER CLIP IS USED.

1 RAINSCREEN PLAN DETAIL
 SCALE: 1 1/2" = 1'-0"

EIFS ASSEMBLY U.N.O.:
 STOCOAT LOTUSAN
 STO PRIMER
 STO BASE COAT AND MESH REINFORCEMENT
 STO INSULATION
 STO ADHESIVE
 STO GOLD WEATHER BARRIER
 1/2" PLYWOOD SHEATHING (AT LOCATIONS WHERE EXISTING SHEATHING DOES NOT REMAIN)

ALL DIMENSIONS SHOWN TO BE FIELD VERIFIED U.N.O.



| NO. | DATE | REVISIONS/ISSUANCES |
|-----|------------|---------------------|
| 2 | 03/15/2017 | ISSUED FOR PERMIT |
| 1 | 02/15/2017 | ISSUED FOR PRICING |

EPSTEIN
 Architecture
 Interiors
 Engineering
 Construction

Chicago
 New York
 Bucharest
 Warsaw

600 W. Fulton Street
 Chicago, IL 60661-1259
 T 312.454.9100
 www.epsteinglobal.com

PROJECT NUMBER: 16303
 PROJECT MANAGER: DS
 ARCH/ENG: JH
 SCALE: As indicated
 DRAWN BY: JP
 CHECKED BY: JC

DETAILS

Structural Engineer

Architect

Owner

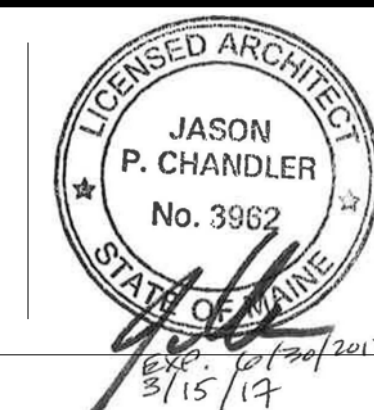
Project Address

EPSTEIN
 600 West Fulton
 Chicago, IL 60661
 312.454.9100

EPSTEIN
 600 West Fulton
 Chicago, IL 60661
 312.454.9100

LQ ACQUISITION PROPERTIES LLC.
 900 Hidden Ridge
 Irving, Texas 75038
 214.462.6600

La Quinta Inn No. 2049
 340 Park Ave
 Portland, ME 04102



A-401

©2017 A. Epstein and Sons International, Inc. All rights reserved.