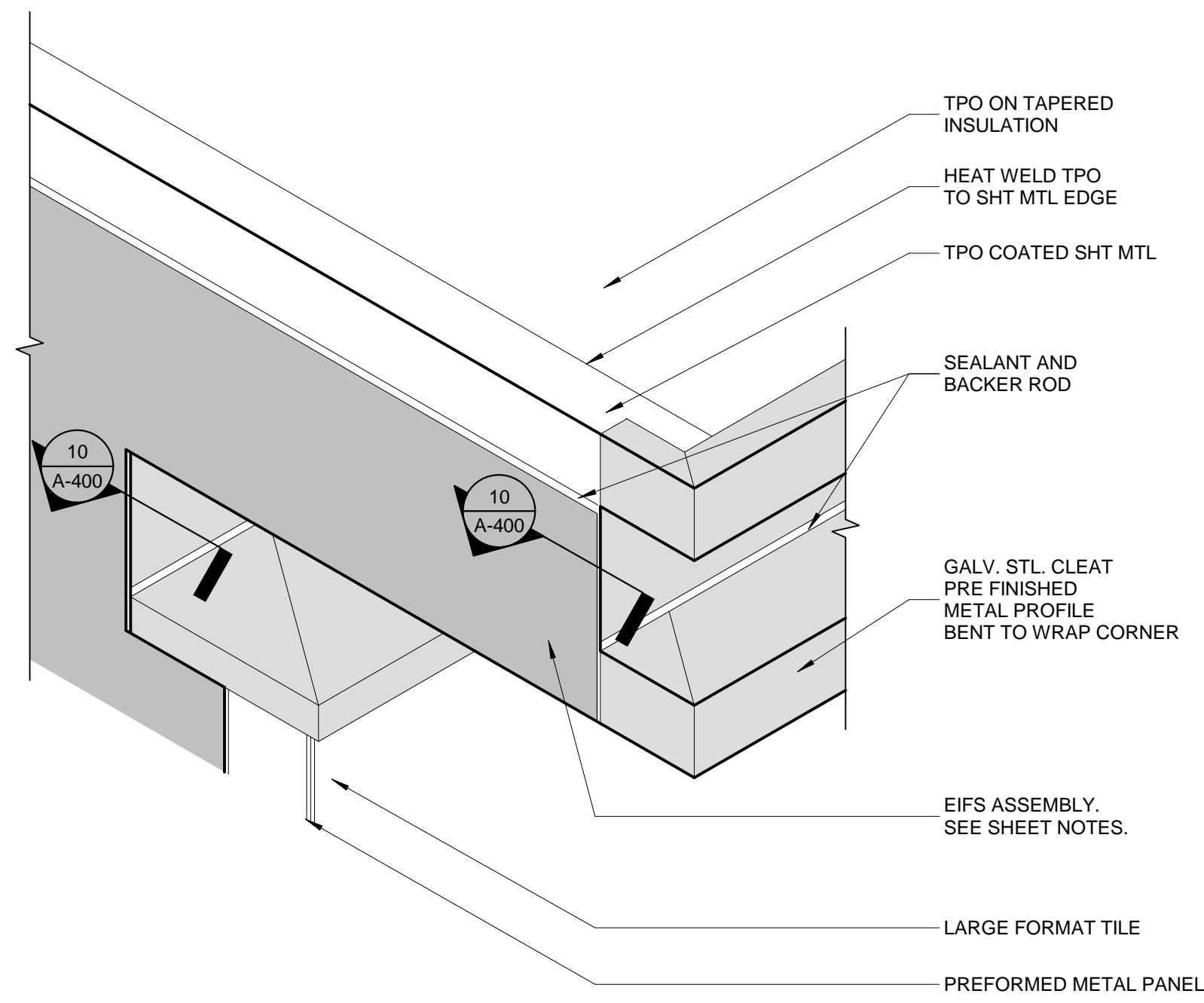
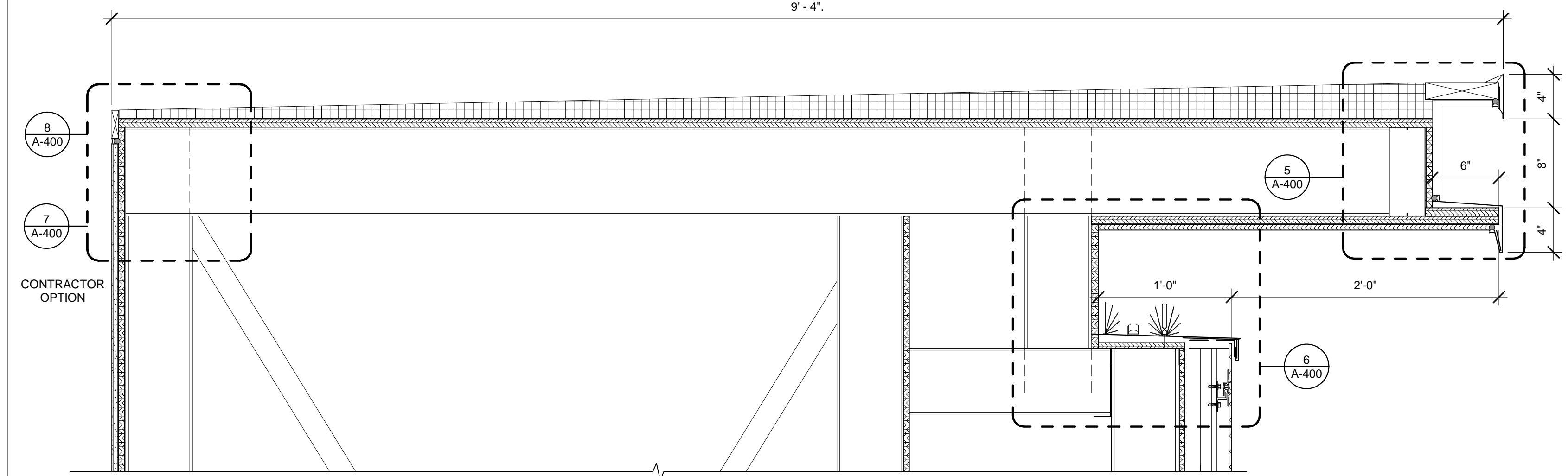


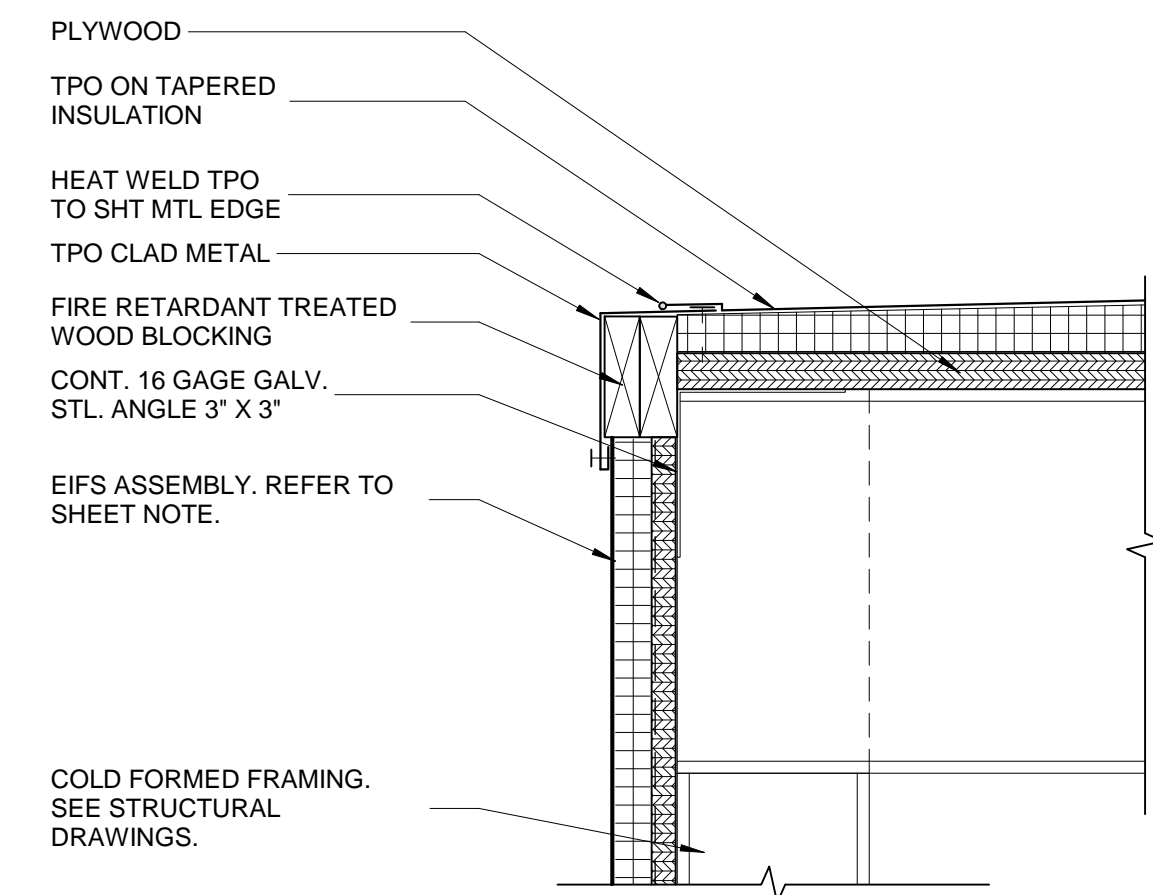
10 CORNICE BACK CORNER PLAN DETAIL
SCALE: 3" = 1'-0"



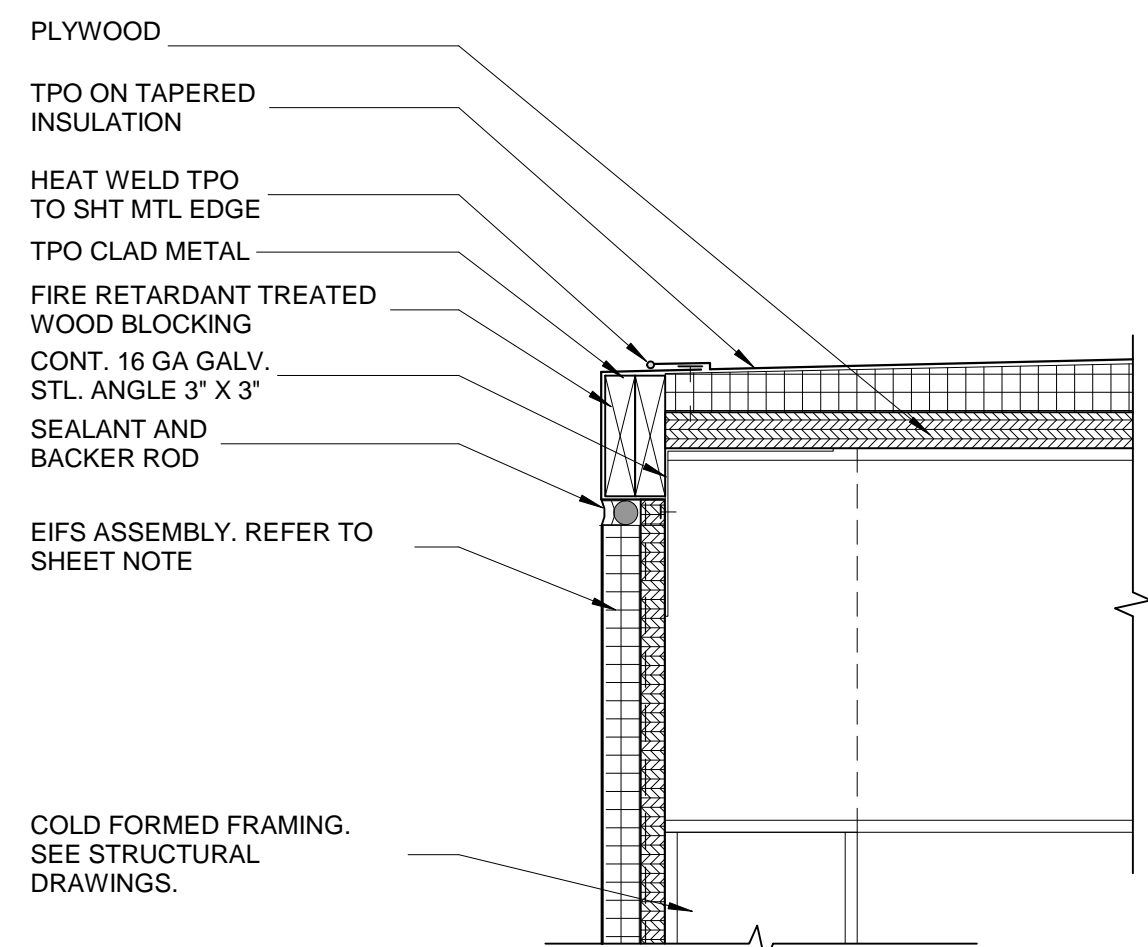
9 CORNICE DETAIL - BACK CORNER AXON
SCALE: 1 1/2" = 1'-0"



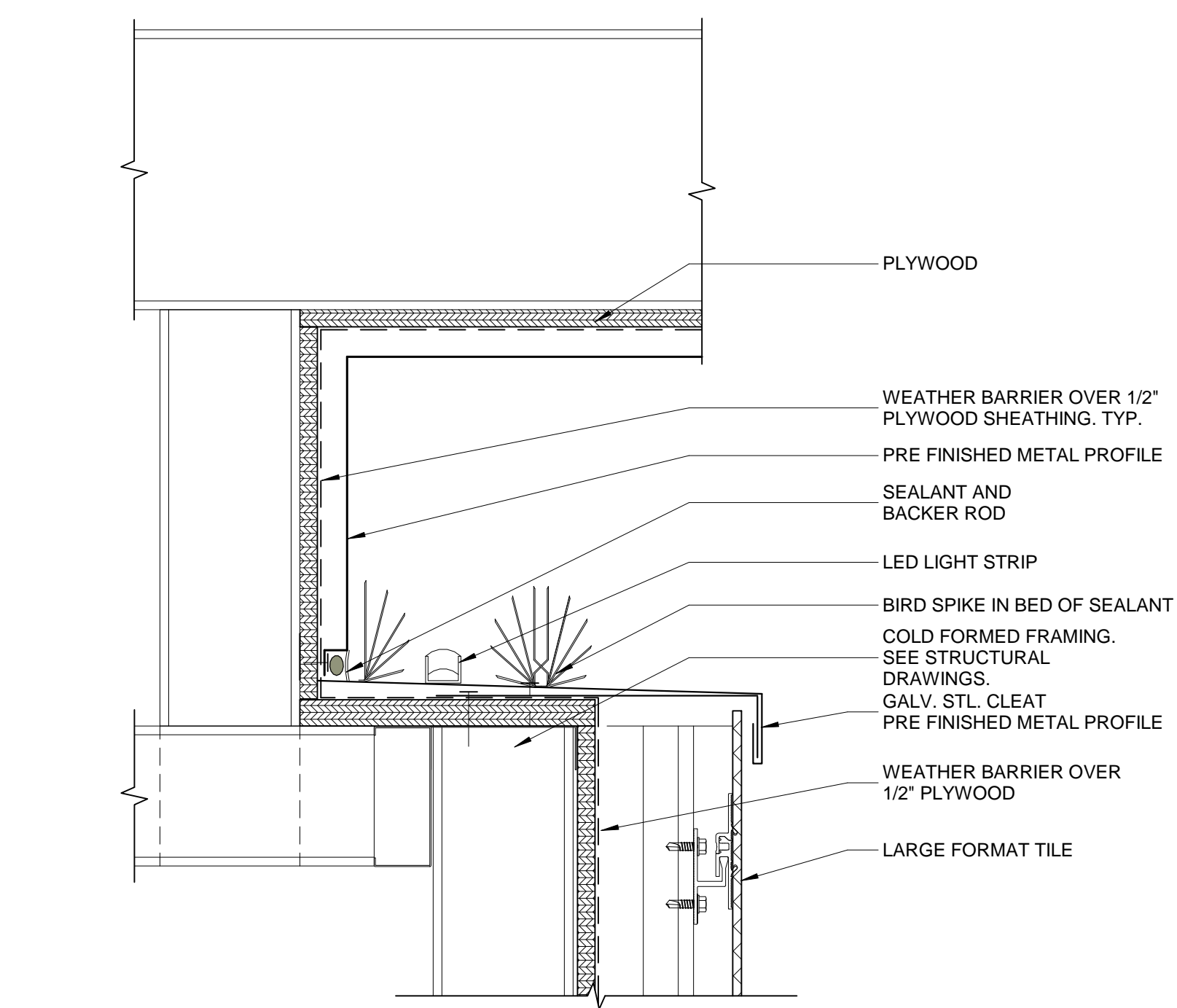
4 CORNICE DETAIL
SCALE: 1 1/2" = 1'-0"



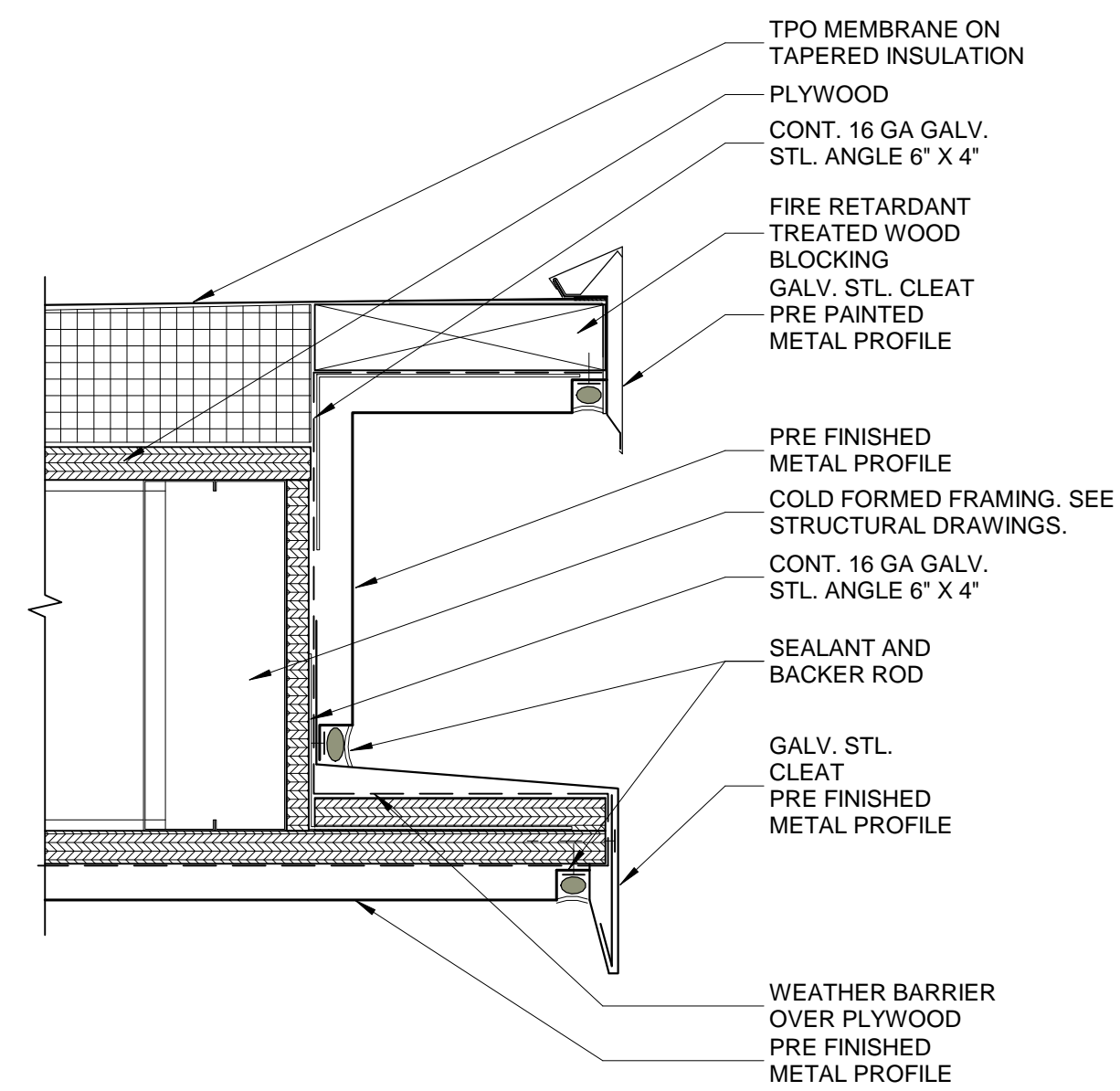
8 CORNICE DETAIL
SCALE: 3" = 1'-0"



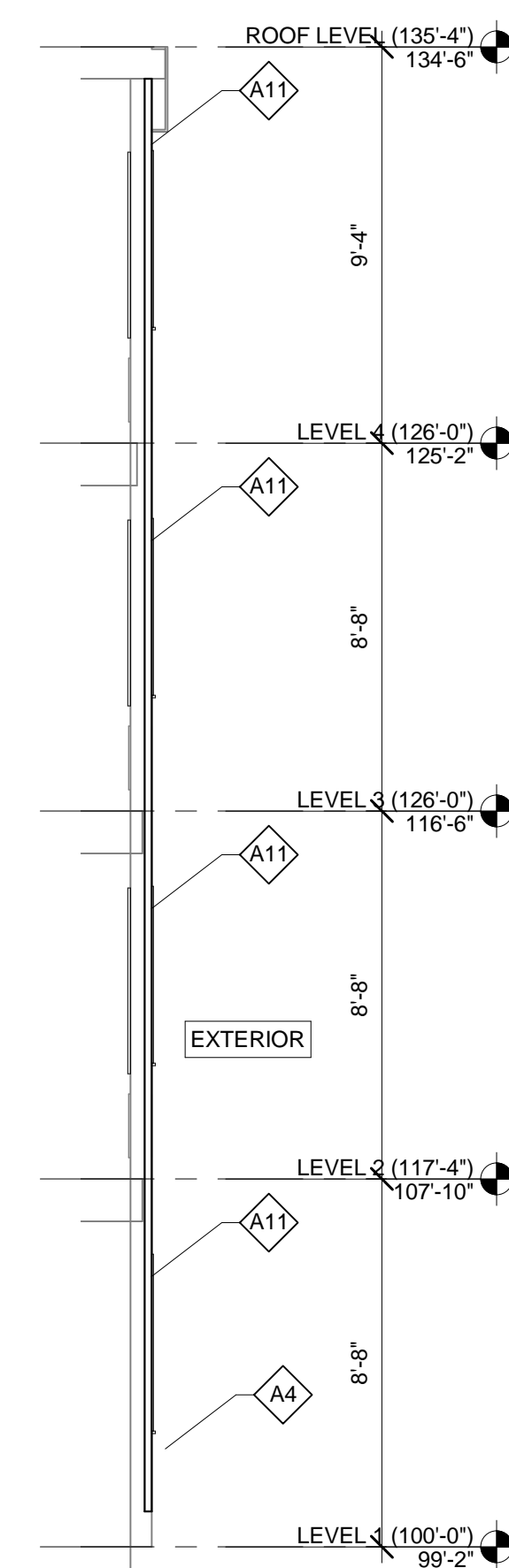
7 CORNICE DETAIL
SCALE: 3" = 1'-0"



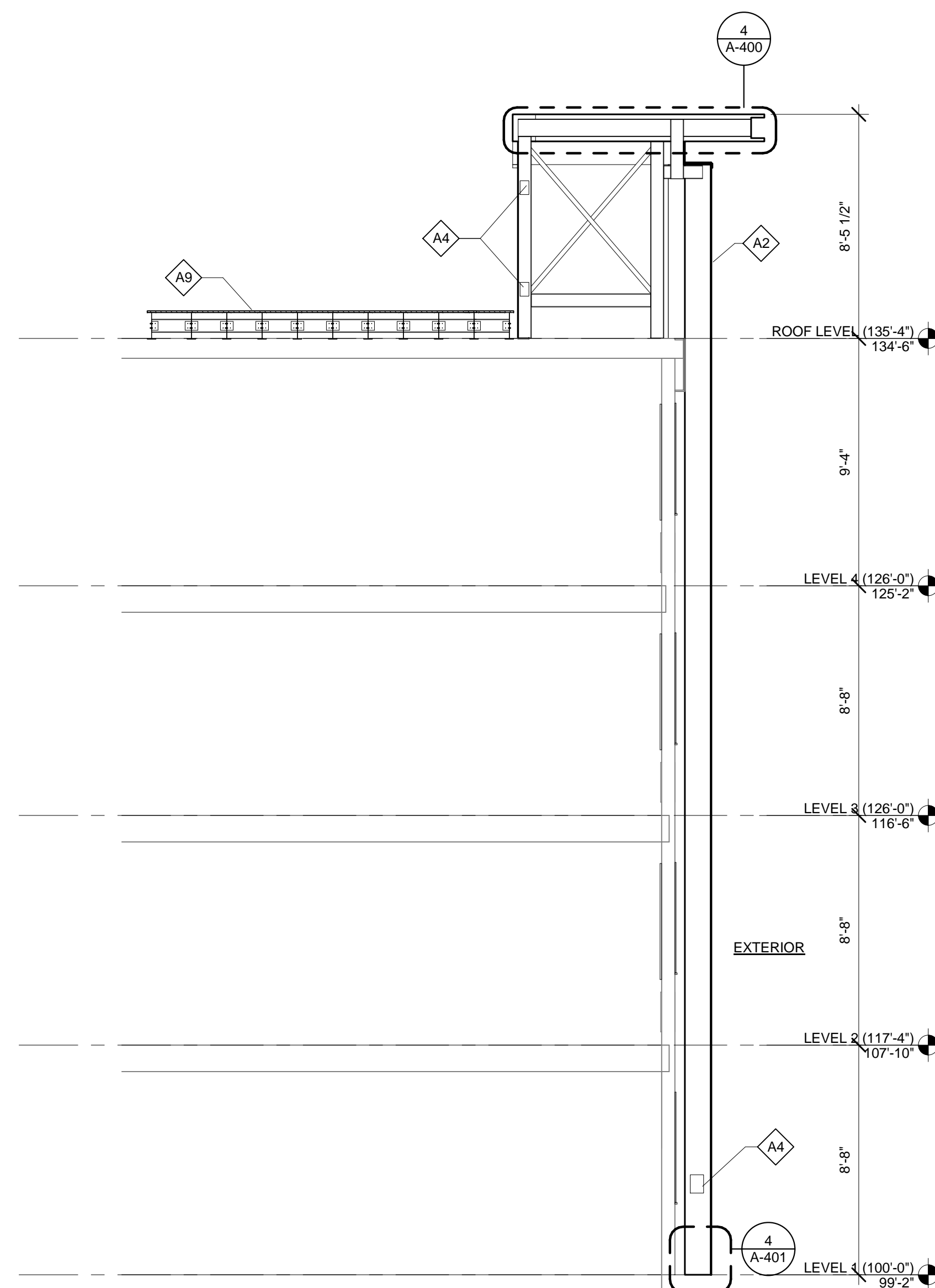
6 CORNICE DETAIL
SCALE: 3" = 1'-0"



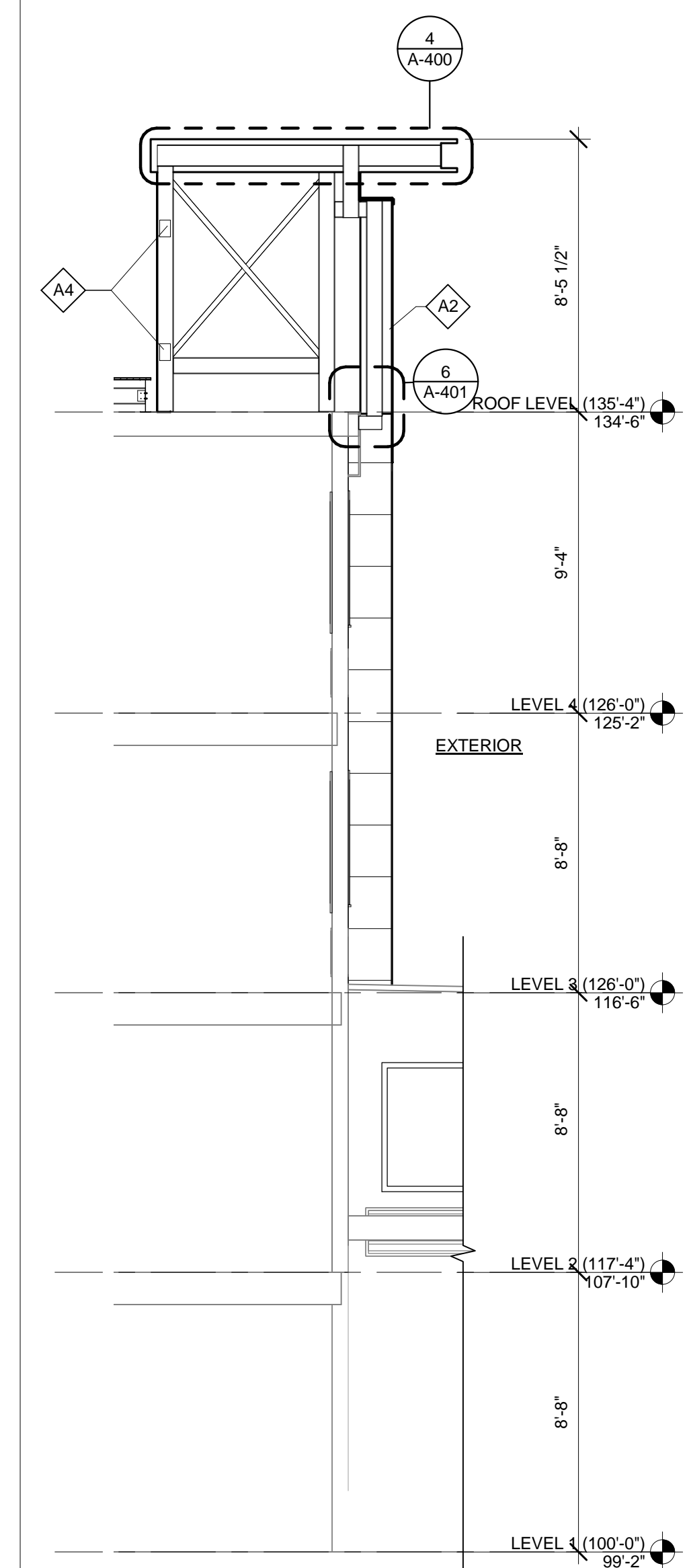
5 CORNICE DETAIL
SCALE: 3" = 1'-0"



3 WALL SECTION
SCALE: 1/4" = 1'-0"



2 WALL SECTION
SCALE: 1/4" = 1'-0"

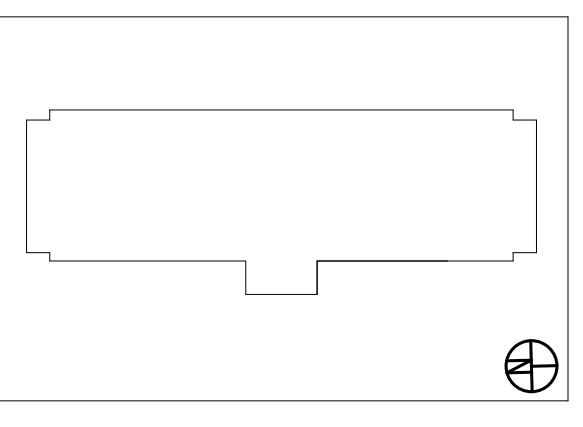


1 WALL SECTION
SCALE: 1/4" = 1'-0"

#	NOTE
A1	CORNICE. SEE DETAILS FOR ADDITIONAL INFORMATION.
A2	LARGE FORMAT TILE RAINSCREEN SYSTEM.
A4	PROVIDE VENT (NARROW PROFILE LOUVER: RUSKIN ELF15J) IN SHEATHING OF EXTERIOR WALL AND/OR EIFS. SEE SECTIONS FOR LOCATIONS. SEE ELEVATION NOTES FOR MORE INFORMATION.
A5	SIGNAGE BY OWNER. PROVIDE SUPPORT AND POWER AS REQUIRED BY SIGN MANUFACTURER AND INSTALLER. WATERPROOF OVER SIGNAGE CONNECTIONS TO MAINTAIN WATERTIGHT ENCLOSURE. EXTEND CONDUIT AND WIRE TO POWER BACKLICK SIGNAGE. VERIFY VOLTAGE OF EXISTING SIGNAGE IS 120V AND MATCHES SCHEDULED SIGN PRIOR TO INSTALLATION. COORDINATE REQUIREMENTS WITH SIGN SUPPLIER.
A6	SIGNAGE BY OWNER. PAINTED WALL GRAPHIC PROVIDED BY SIGNAGE CONTRACTOR.
A7	PATCH ROOF TO MATCH EXISTING. SEE DETAILS FOR ADDITIONAL INFORMATION.
A8	PROVIDE ACCESS PANEL IN EXTERIOR WALL 2'-6" ABOVE ROOF.
A9	AREA OF INSULATED ROOF ENCLOSURE OVER COLD FORMED STEEL STRUCTURE.
A11	EIFS. SEE DETAIL 7/A-401 FOR MORE INFORMATION. SEE ELEVATION FOR FINISH COLOR. SEE SPECIFICATION SECTION 072419 FOR ASSEMBLY REQUIREMENTS.
A12	REPLACE WINDOW IN KIND. TYP. ALL WINDOWS WITH MARVIN ALL ULTREX GLIDER.
A13	REPLACE STOREFRONT SYSTEM IN KIND (YKKAP SYSTEM, 45XT, IN CLEAR ANODIZE ALUMINUM FINISH).

EIFS ASSEMBLY U.N.O.:
STOCOAT LOTUSAN
STO PRIMER
STO BASE COAT AND MESH REINFORCEMENT
STO INSULATION
STO ADHESIVE
STO GOLD WEATHER BARRIER
1/2" PLYWOOD SHEATHING (AT LOCATIONS WHERE EXISTING SHEATHING DOES NOT REMAIN)

ALL DIMENSIONS SHOWN TO BE FIELD VERIFIED U.N.O.



NO.	DATE	REVISIONS/ISSUANCES
2	03/15/2017	ISSUED FOR PERMIT
1	02/15/2017	ISSUED FOR PRICING

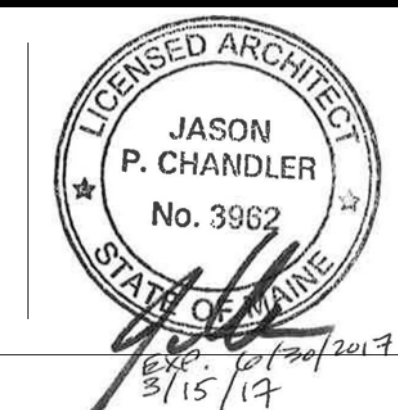
EPSTEIN
Architecture Interiors Engineering Construction
Chicago New York Bucharest Warsaw

600 W. Fulton Street
Chicago, IL 60661-1259
T 312.454.9100
www.epsteinglobal.com

PROJECT NUMBER: 16303
PROJECT MANAGER: DS
ARCH/ENG: JH
SCALE: As indicated
DRAWN BY: JP
CHECKED BY: JC

WALL SECTIONS AND DETAILS

Structural Engineer EPSTEIN 600 West Fulton Chicago, IL 60661 312.454.9100
Architect EPSTEIN 600 West Fulton Chicago, IL 60661 312.454.9100
Owner LQ ACQUISITION PROPERTIES, LLC. 900 Hidden Ridge Irving, Texas 75038 214.482.6600
Project Address La Quinta Inn No. 2049 340 Park Ave Portland, ME 04102



A-400

©2016 A. Epstein and Sons International, Inc. All rights reserved.