

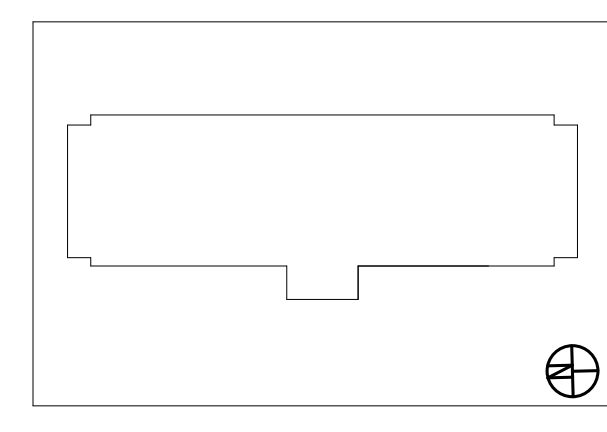
#	NOTE
A1	CORNICE. SEE DETAILS FOR ADDITIONAL INFORMATION.
A2	LARGE FORMAT TILE RAINSCREEN SYSTEM.
A4	PROVIDE VENT (NARROW PROFILE LOUVER-RUSKN ELF15J) IN SHEATHING OF EXTERIOR WALL AND/OR EIFS. SEE SECTIONS FOR LOCATIONS. SEE ELEVATION NOTES FOR MORE INFORMATION.
A5	SIGNAGE BY OWNER. PROVIDE SUPPORT AND POWER AS REQUIRED BY SIGN MANUFACTURER AND INSTALLER. WATERPROOF OVER SIGNAGE CONNECTIONS TO MAINTAIN WATERTIGHT ENCLOSURE. EXTEND CONDUIT AND WIRE TO POWER BACKLICK SIGNAGE. VERIFY VOLTAGE OF EXISTING SIGNAGE IS 120V AND MATCHES SCHEDULED SIGN PRIOR TO INSTALLATION. COORDINATE REQUIREMENTS WITH SIGN SUPPLIER.
A6	SIGNAGE BY OWNER. PAINTED WALL GRAPHIC PROVIDED BY SIGNAGE CONTRACTOR.
A7	PATCH ROOF TO MATCH EXISTING. SEE DETAILS FOR ADDITIONAL INFORMATION.
A8	PROVIDE ACCESS PANEL IN EXTERIOR WALL 2'-6" ABOVE ROOF.
A9	AREA OF INSULATED ROOF ENCLOSURE OVER COLD FORMED STEEL STRUCTURE.
A11	EIFS. SEE DETAIL 7/A-401 FOR MORE INFORMATION. SEE ELEVATION FOR FINISH COLOR. SEE SPECIFICATION SECTION 072419 FOR ASSEMBLY REQUIREMENTS.
A12	REPLACE WINDOW IN KIND, TYP. ALL WINDOWS WITH MARVIN ALL ULTREX GLIDER.
A13	REPLACE STOREFRONT SYSTEM IN KIND. VERIFY ALL EXISTING CONDITIONS AND DIMENSIONS PRIOR TO PROCEEDING WITH CONSTRUCTION.

- ELEVATION NOTES**
- PROVIDE VENTS. TOP AND BOTTOM OF BOTH SIDES OF RAINSCREEN BACK UP CONSTRUCTION AS SHOWN ON DRAWINGS. TOTAL FREE AREA OF VENTS SHALL BE 6 SF PER CODE.
 - SEE A-310 FOR LARGE FORMAT TILE ELEVATION INFORMATION.
 - SEE G-002 FOR CONDITION OF EIFS NOTES.
 - PAINT ALL LOUVERS BELOW WINDOWS TO MATCH ADJACENT EIFS.
 - EXTERIOR DOORS, FRAMES, PIPES, VENTS, LIGHT FIXTURES, AND OTHER ELEMENTS PENETRATING THE FACADE TO BE PAINTED TO MATCH ADJACENT EIFS.
 - EXTERIOR ELEMENTS SUCH AS RAILINGS AND SITE WALLS SHOULD BE PAINTED TO MATCH PT-1.
 - POOL ENCLOSURE EIFS, ROOF FASCIA, EXTERIOR DOORS, AND ELEMENTS PENETRATING THE FACADE TO MATCH PT-1.

COLOR LEGEND

PT-1	(THUNDER GRAY SW 7645)
PT-2	(MEGA GREIGE SW 7031)
PT-3	(DUCK WHITE SW 7010)

ALL DIMENSIONS SHOWN TO BE FIELD VERIFIED U.N.O.



#	DATE	REVISIONS/ISSUANCES
2	03/15/2017	ISSUED FOR PERMIT
1	02/15/2017	ISSUED FOR PRICING

EPSTEIN

Architecture Interiors Engineering Construction

Chicago New York Bucharest Warsaw

600 W. Fulton Street
Chicago, IL 60661-1259
T 312.454.9100

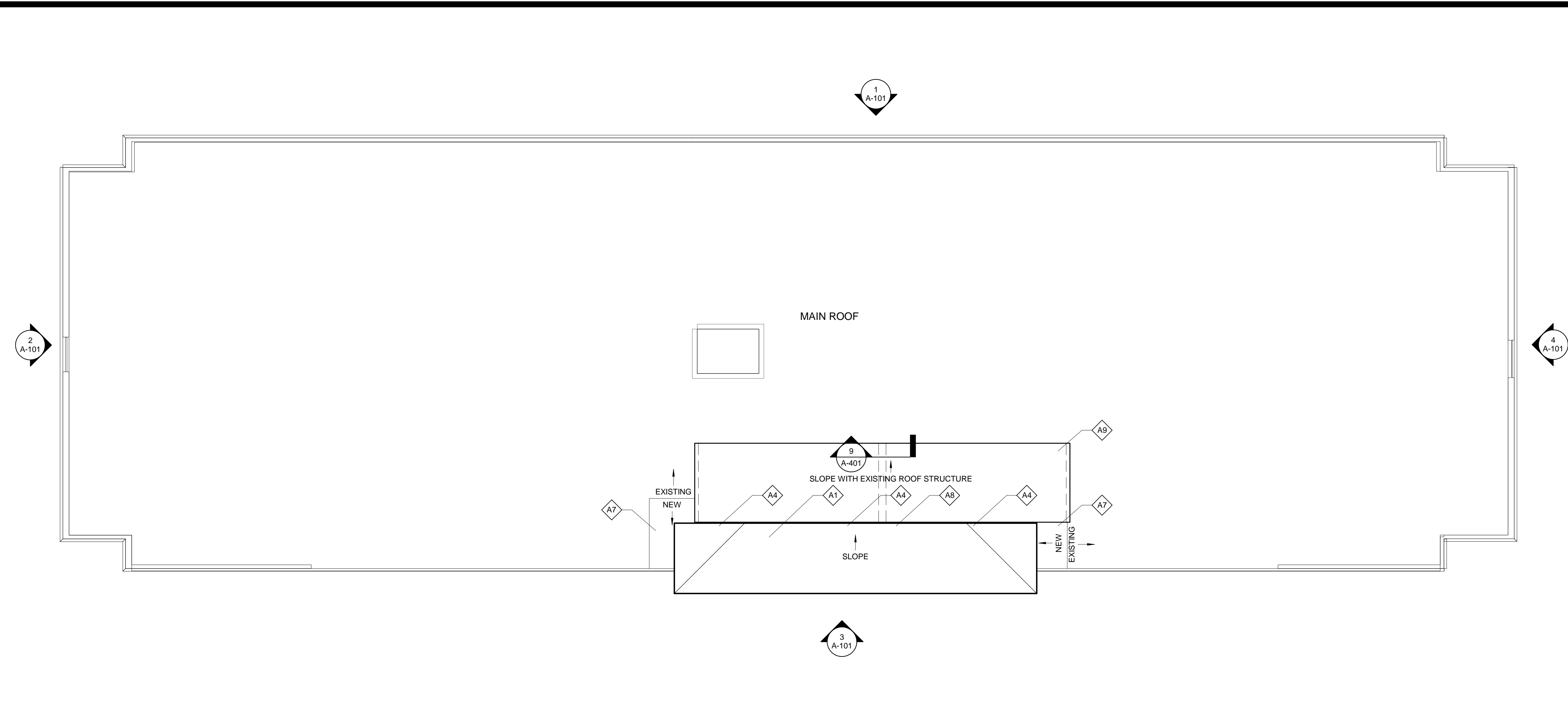
www.epsteinglobal.com

PROJECT NUMBER:	16303
PROJECT MANAGER:	DS
ARCH/ENG:	JH
SCALE:	As indicated
DRAWN BY:	JP
CHECKED BY:	JC

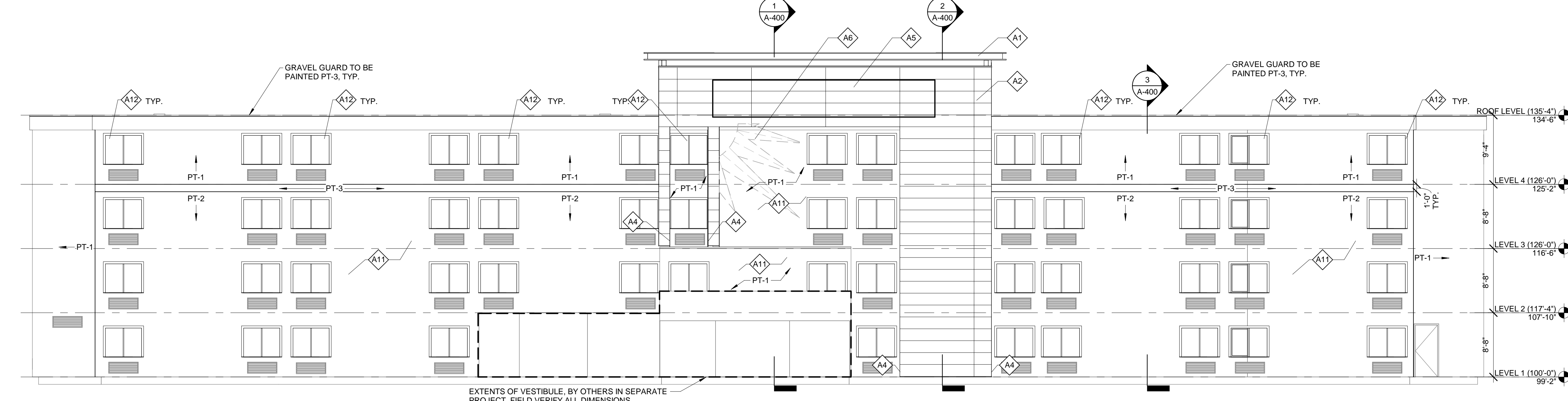
ROOF PLAN AND ELEVATIONS

A-101

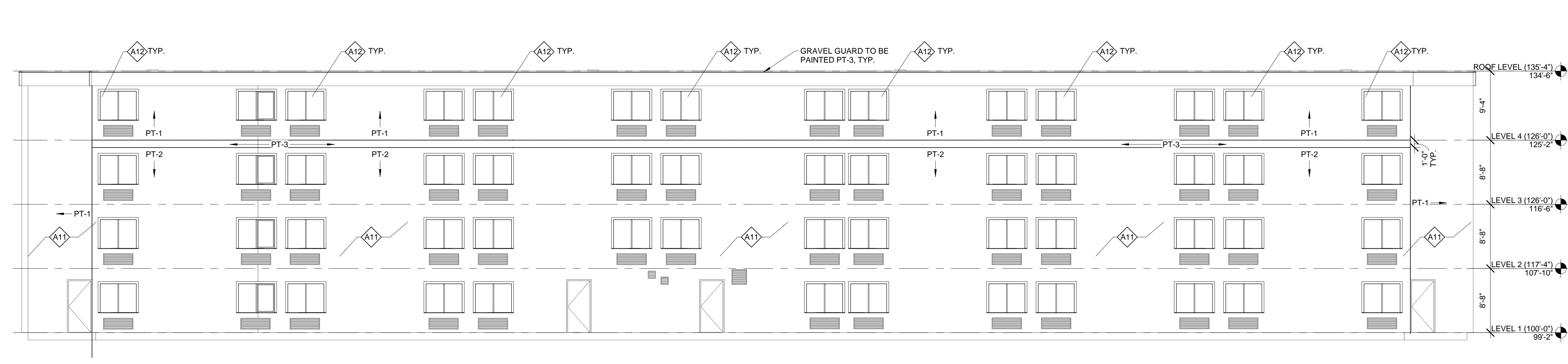
©2016 A. Epstein and Sons International, Inc. All rights reserved.



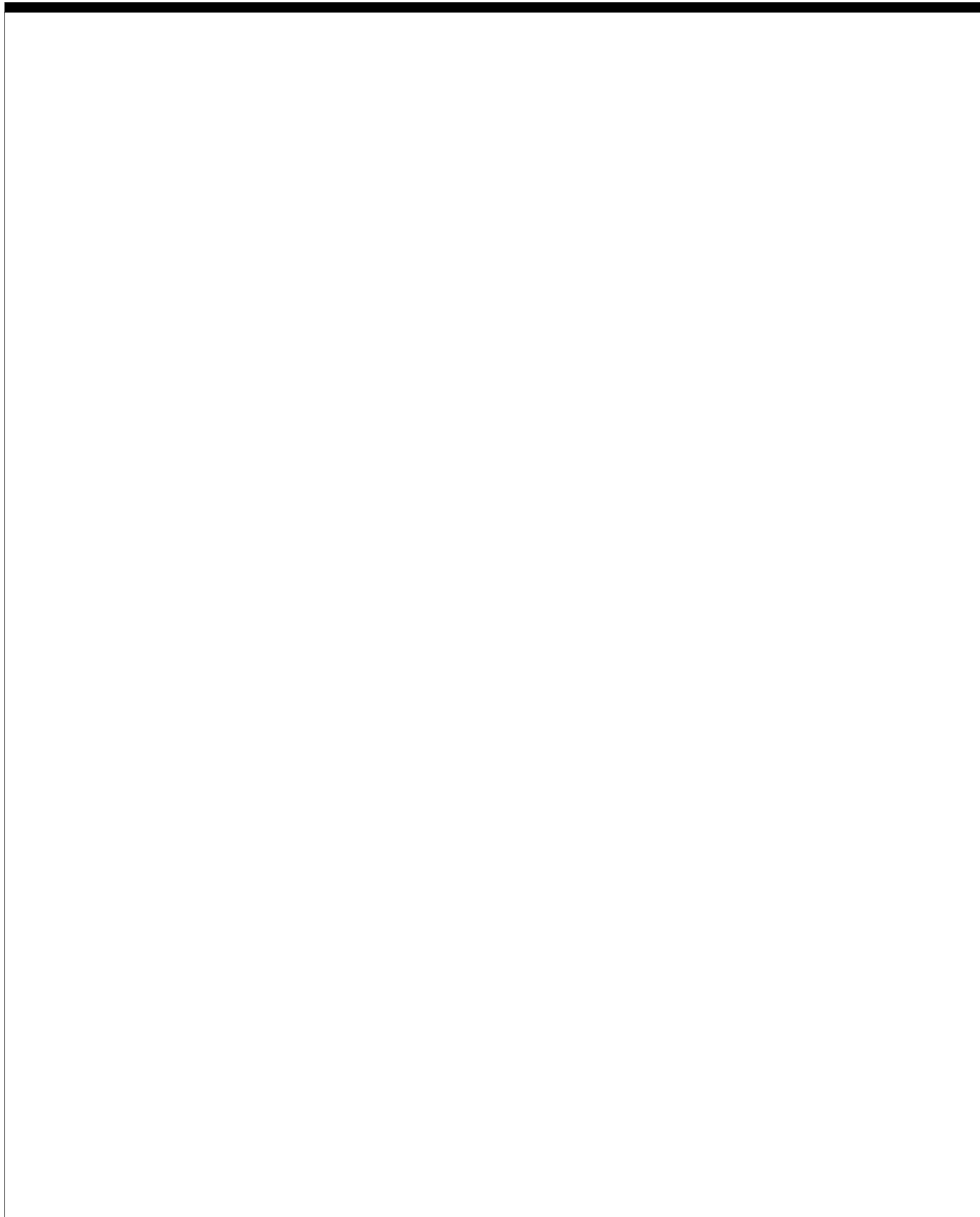
5 ROOF PLAN
SCALE: 1/8" = 1'-0"



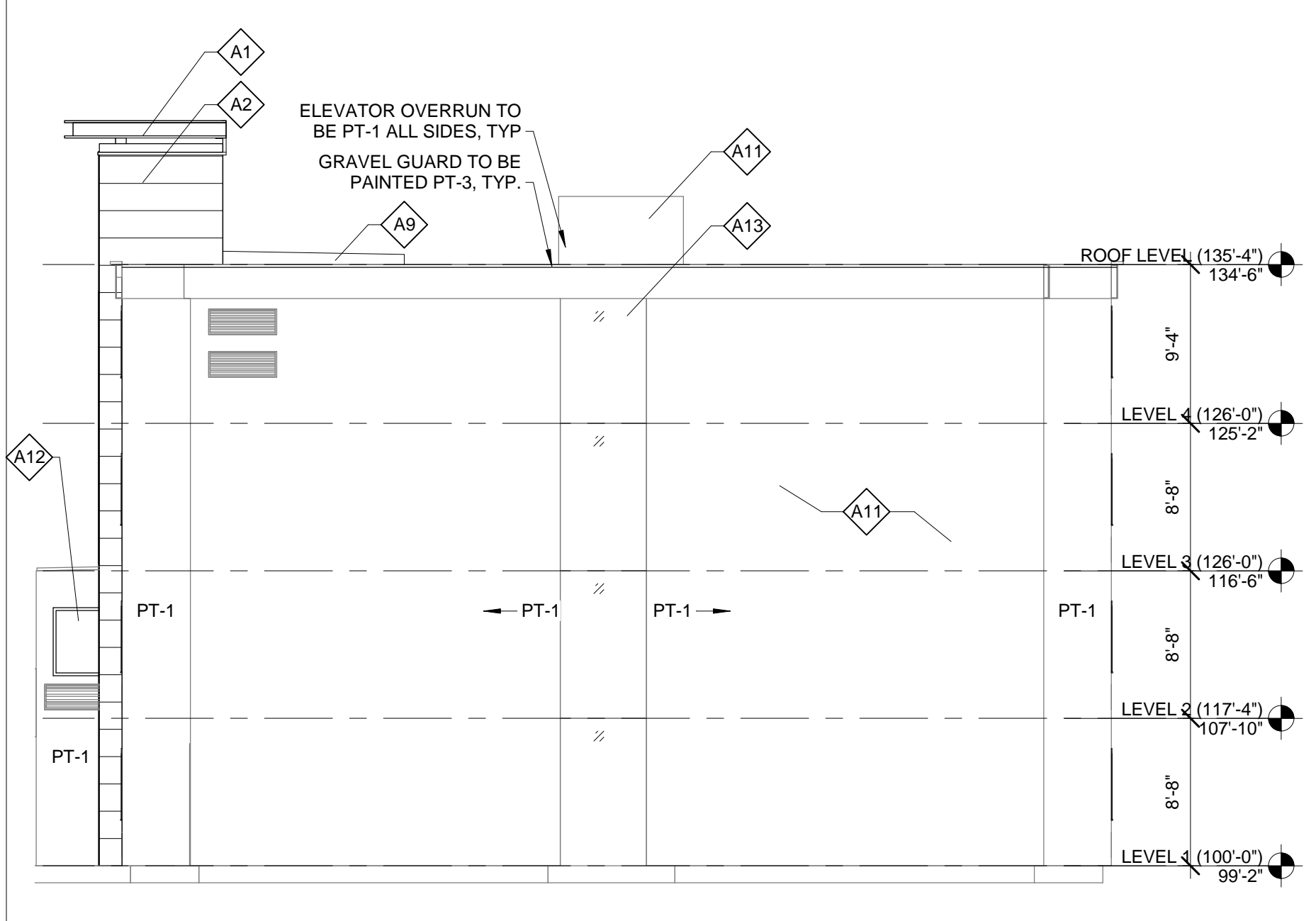
3 SOUTH ELEVATION
SCALE: 1/8" = 1'-0"



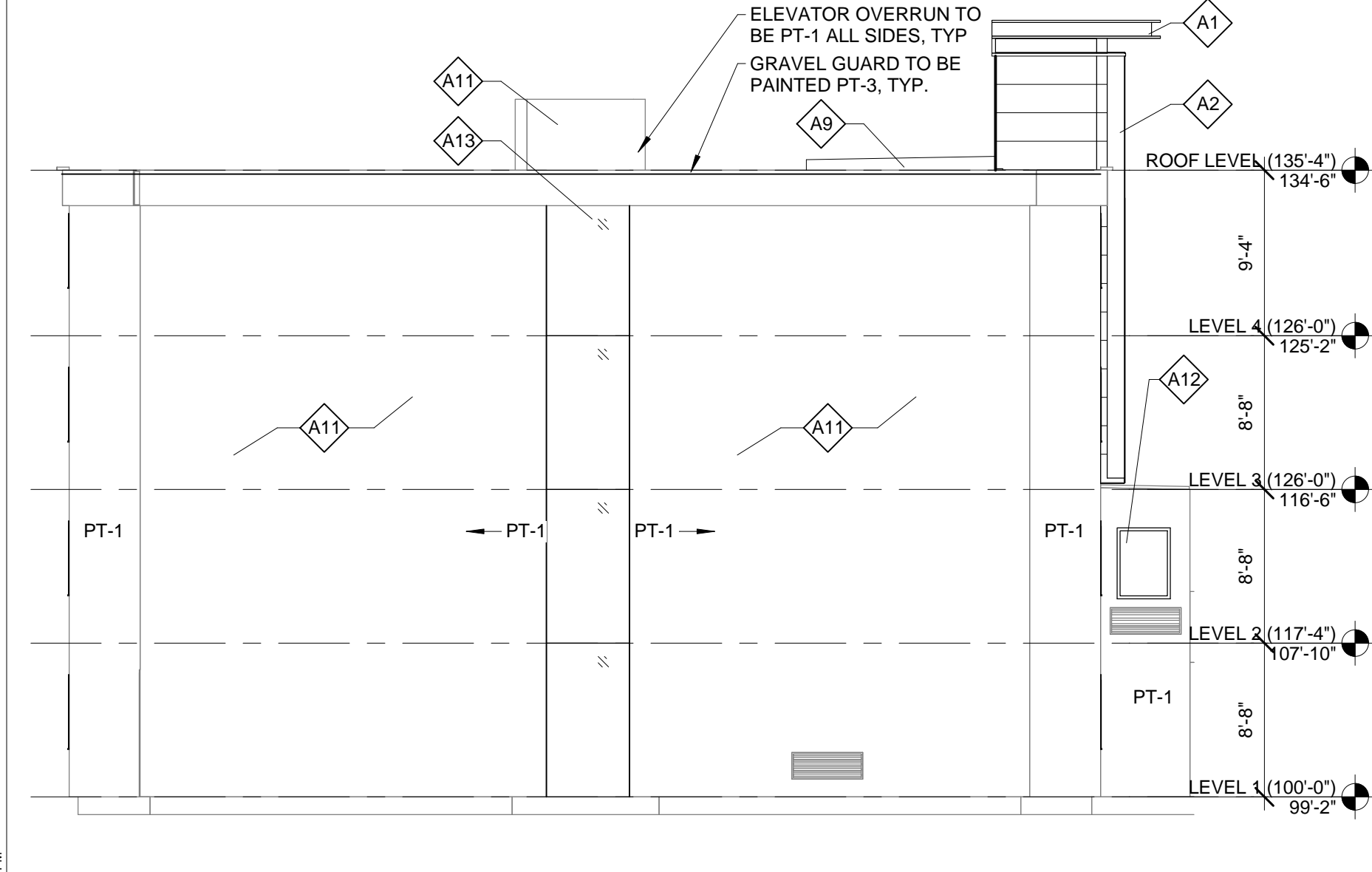
1 NORTH ELEVATION
SCALE: 1/8" = 1'-0"



2 SOUTH ELEVATION
SCALE: 1/8" = 1'-0"



4 NORTH ELEVATION
SCALE: 1/8" = 1'-0"



2 SOUTH ELEVATION
SCALE: 1/8" = 1'-0"

Structural Engineer	Architect	Owner	Project Address
EPSTEIN 600 West Fulton Chicago, IL 60661 312.454.9100	EPSTEIN 600 West Fulton Chicago, IL 60661 312.454.9100	LQ ACQUISITION PROPERTIES, LLC. 900 Hidden Ridge Irving, Texas 75038 214.482.6600	La Quinta Inn No. 2049 340 Park Ave Portland, ME 04102

