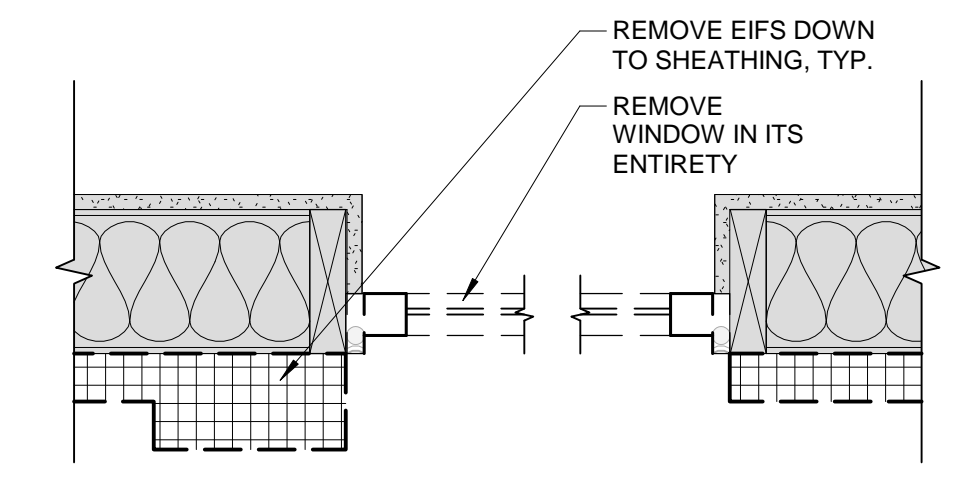
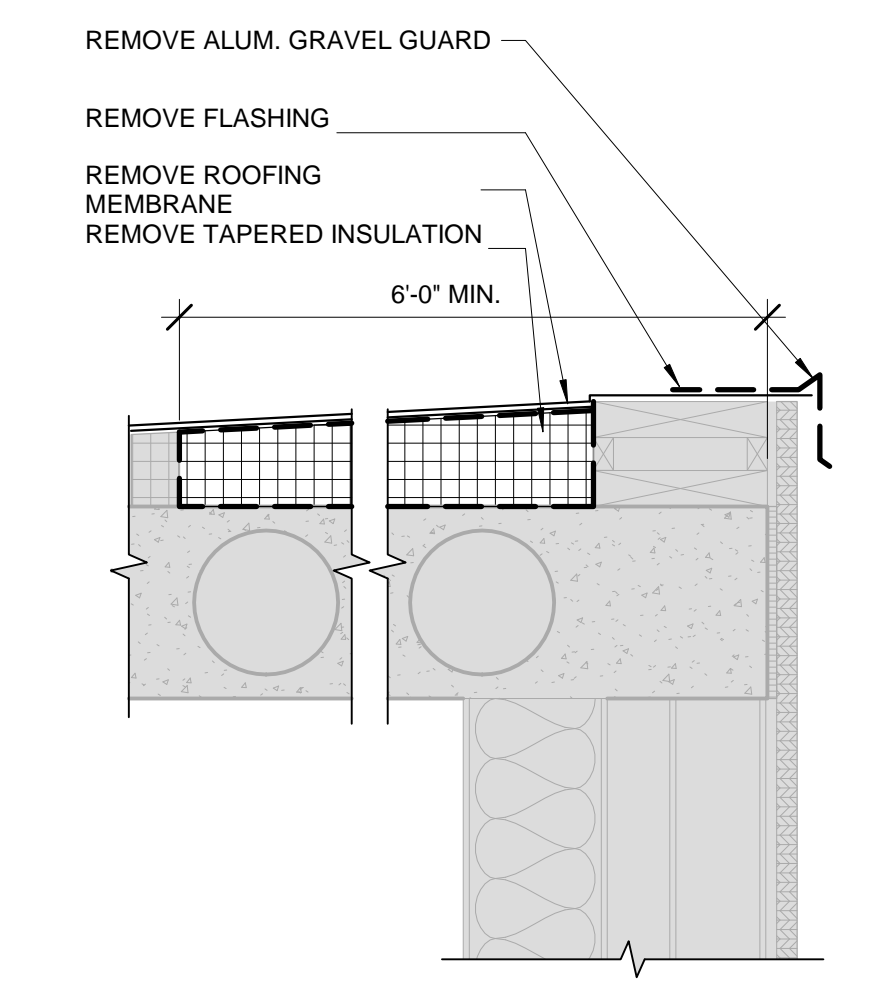


DEMOLITION KEYED NOTES	
#	NOTE
D1	REMOVE ALUMINUM GRAVEL GUARD AS INDICATED IN DEMOLITION DETAIL.
D2	REMOVE ROOF FOR PARAPET CONSTRUCTION AS INDICATED IN DEMOLITION DETAILS.
D3	REMOVE BACK-LIT SIGNAGE INCLUDING ALL FIXTURES, BACK BOXES, CONDUIT AND WIRING BACK TO NEAREST CONNECTION POINT. ALL SIGNAGE BY OWNER.
D4	REMOVE LIGHT FIXTURE, INCLUDING BACKBOXES, CONDUIT AND WIRING BACK TO NEAREST CONNECTION POINT. CONFIRM SCOPE WITH OWNER PRIOR TO PROCEEDING WITH WORK.
D5	REMOVE ROOFING AT ALL COLD FORMED STEEL CONNECTION LOCATIONS WITHIN BOUNDARY SHOWN. SEE STRUCTURAL DRAWINGS FOR ADDITIONAL INFORMATION.
D6	REMOVE WINDOW IT ITS ENTIRETY. TYP. ALL WINDOWS. SEE DEMOLITION DETAILS FOR EXTENTS.
D7	REMOVE ALL EIFS, INCLUDING THICKENED VERTICAL AND HORIZONTAL BANDING, DOWN TO SHEATHING. SEE DEMOLITION DETAILS FOR EXTENTS. GENERAL CONTRACTOR AND OWNER TO VERIFY CONDITION OF EXISTING SHEATHING TO DETERMINE SHEATHING DEMOLITION SCOPE.

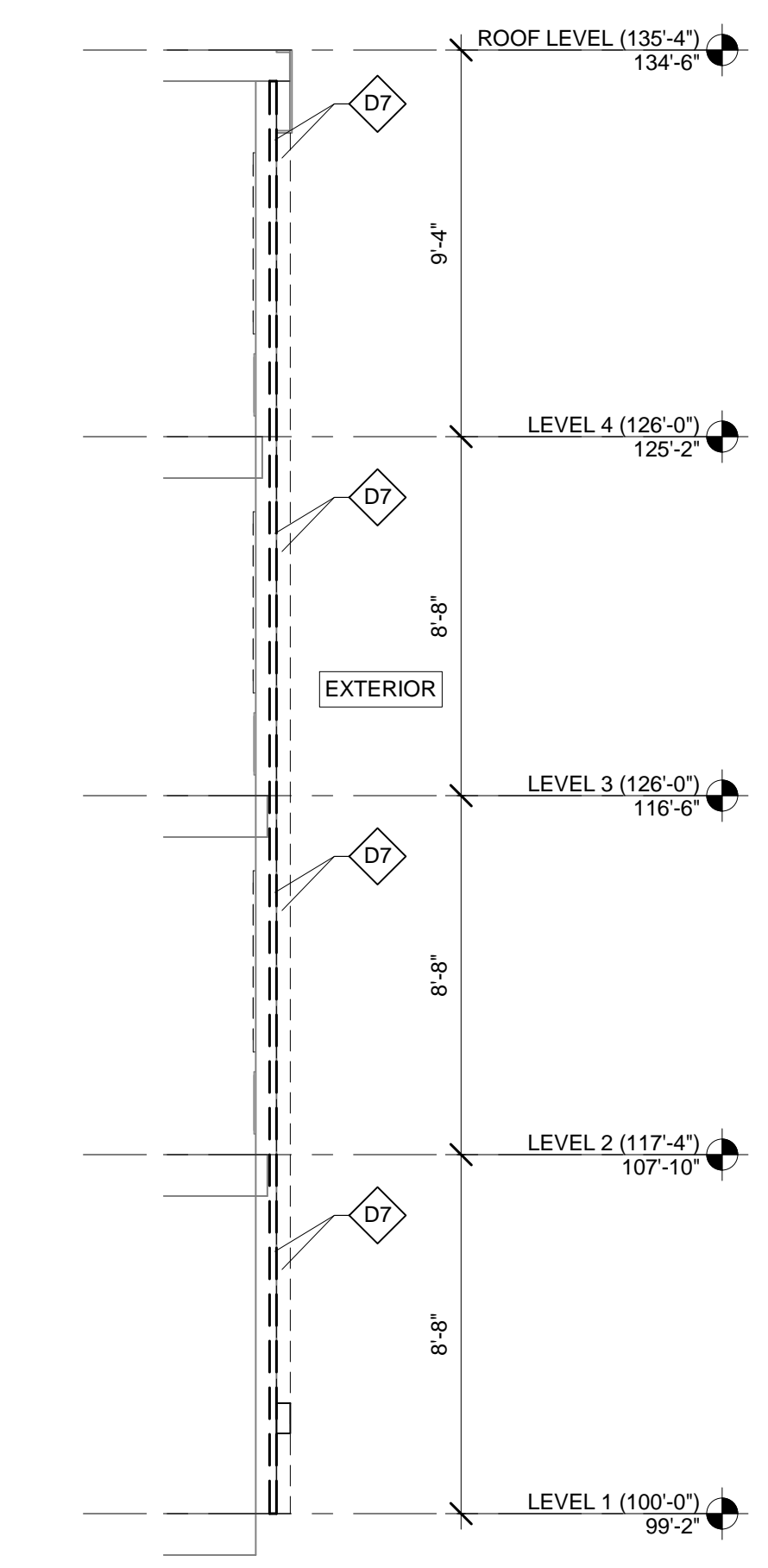


NOTE: GENERAL CONTRACTOR AND OWNER TO VERIFY CONDITION OF EXISTING SHEATHING TO DETERMINE SHEATHING DEMOLITION SCOPE.

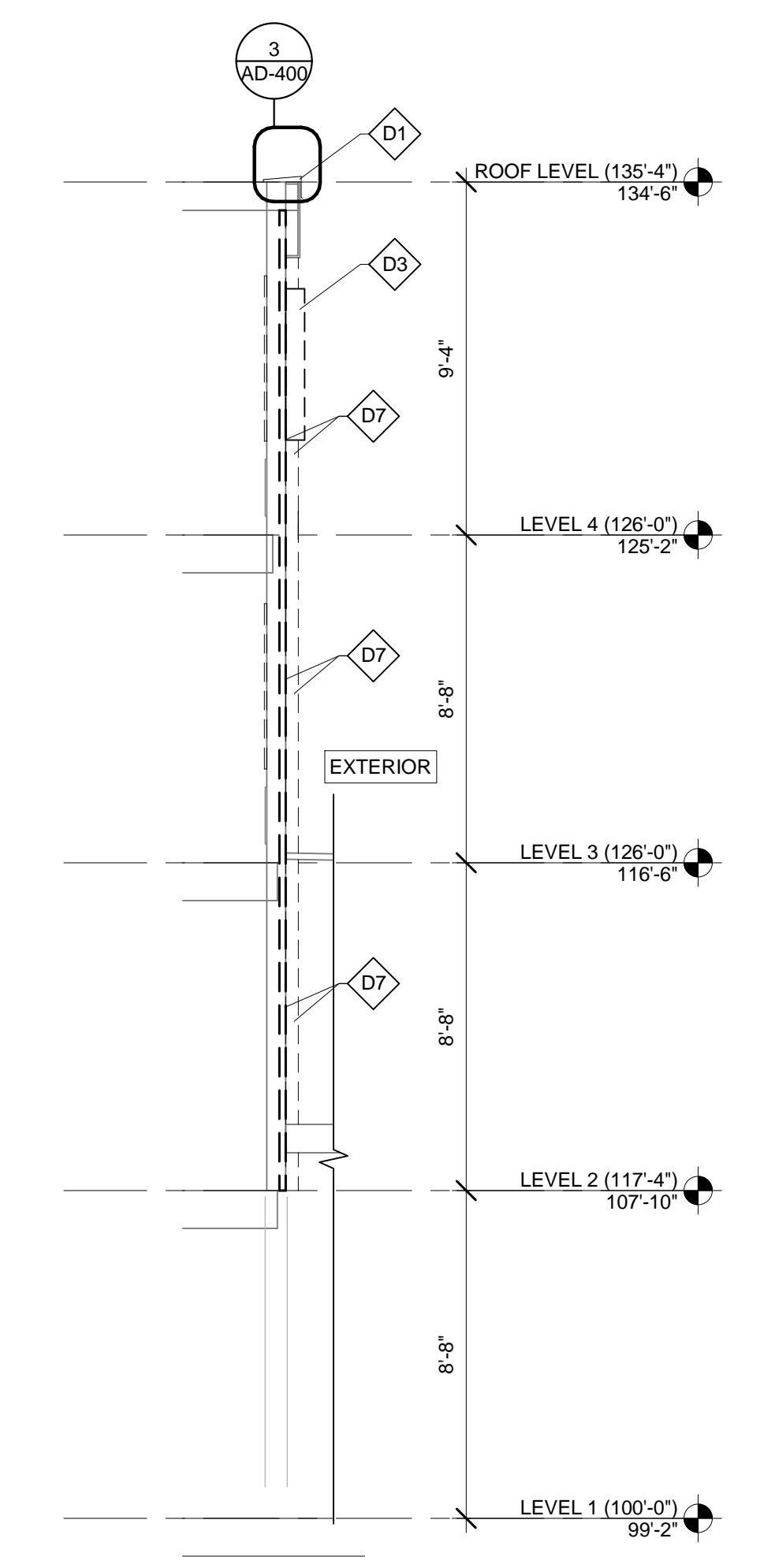
4 PLAN DEMOLITION DETAIL
SCALE: 1 1/2" = 1'-0"



3 ROOF EDGE DEMOLITION DETAIL
SCALE: 1 1/2" = 1'-0"

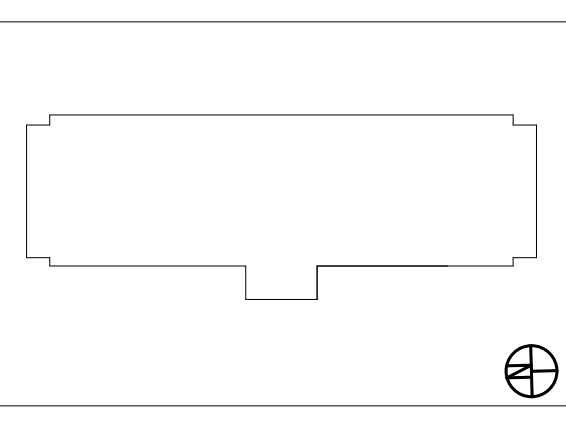


2 DEMOLITION SECTION
SCALE: 1/4" = 1'-0"



1 DEMOLITION SECTION
SCALE: 1/4" = 1'-0"

ALL DIMENSIONS SHOWN TO BE FIELD VERIFIED U.N.O.



NO.	DATE	REVISIONS/ISSUANCES
2	03/15/2017	ISSUED FOR PERMIT
1	02/15/2017	ISSUED FOR PRICING

EPSTEIN

Architecture Chicago
Interiors New York
Engineering Bucharest
Construction Warsaw

600 W. Fulton Street
Chicago, IL 60661-1259
T 312.454.9100

www.epsteinglobal.com

PROJECT NUMBER:	16303
PROJECT MANAGER:	DS
ARCH/ENG:	Designer
SCALE:	As indicated
DRAWN BY:	Author
CHECKED BY:	Checker

DEMOLITION WALL SECTIONS AND DETAILS

AD-400

Structural Engineer
EPSTEIN
600 West Fulton
Chicago, IL 60661
312.454.9100

Architect
EPSTEIN
600 West Fulton
Chicago, IL 60661
312.454.9100

Owner
LQ ACQUISITION PROPERTIES, LLC.
900 Hidden Ridge
Irving, Texas 75038
214.462.6600

Project Address
La Quinta Inn No. 2049
340 Park Ave
Portland, ME 04102

