

ISSUED FOR	BY
FINAL APP.	MTA
CITY COMMENTS	MTA

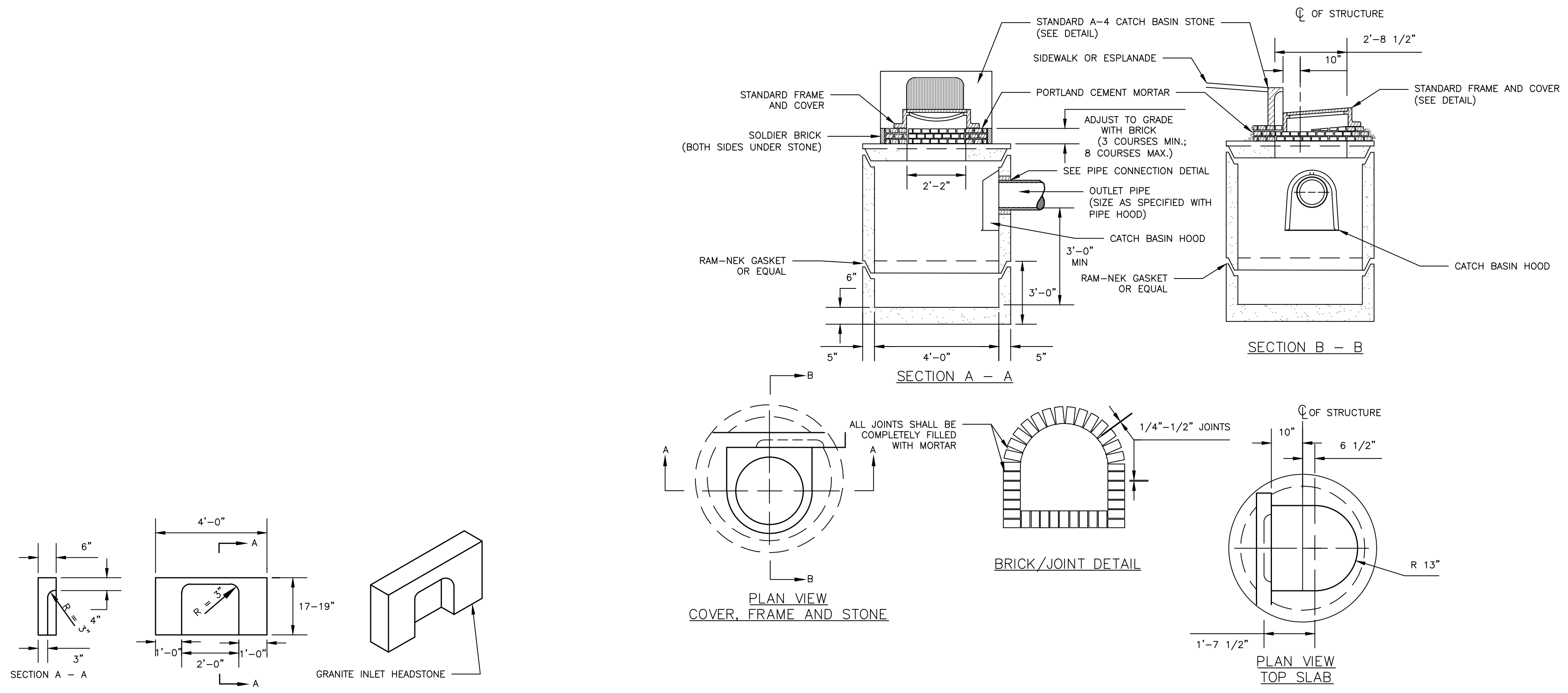
DRAWING NAME:	DRAINAGE DETAILS
PROJECT NAME:	HOTEL RENOVATION & STORMWATER UPGRADES
CLIENT:	LQ MANAGEMENT, LLC
909 HIDDEN RIDGE SUITE 600, IRVING, TEXAS 75038	

ACCOR ENGINEERING, INC.  
 158 BANKFOOT ST. PORTLAND, MAINE 04102  
 (207) 775-2655  
 ALL RIGHTS RESERVED. THIS DRAWING IS THE PROPERTY OF ACCOR ENGINEERING, INC. ANY REPRODUCTION, TRANSMISSION OR DISSEMINATION OF THIS DRAWING WITHOUT WRITTEN PERMISSION FROM ACCOR ENGINEERING, INC. IS STRICTLY PROHIBITED. ACCOR ENGINEERING, INC. IS NOT RESPONSIBLE FOR ANY DAMAGE TO PERSONS OR PROPERTY ARISING FROM THE USE OF THIS DRAWING.

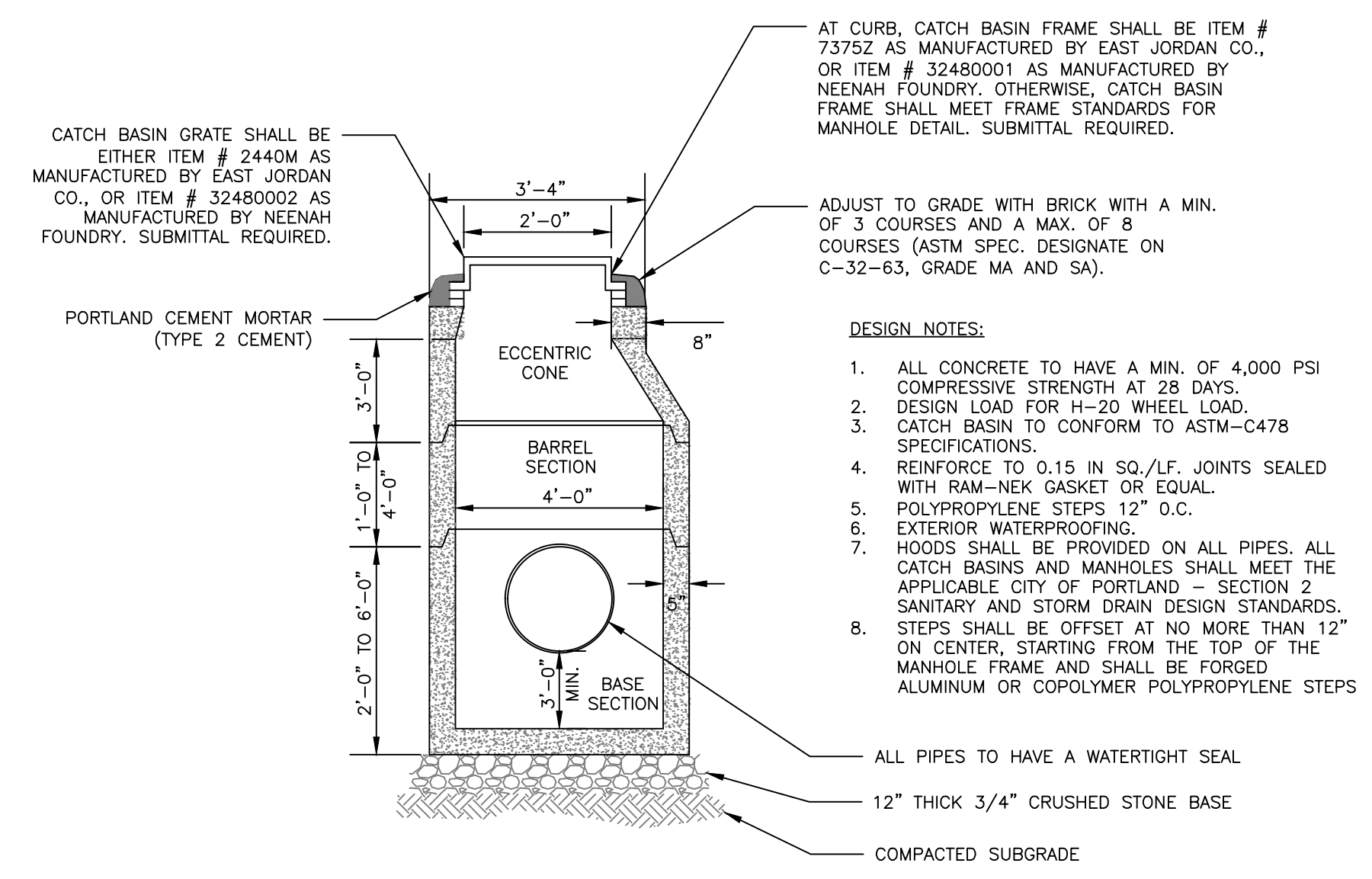
FILE:	5012_CIVIL
JN:	5012
SCALE:	NTS
DESIGNED BY:	WHS
DRAWN BY:	SJL
CHECKED BY:	MTA



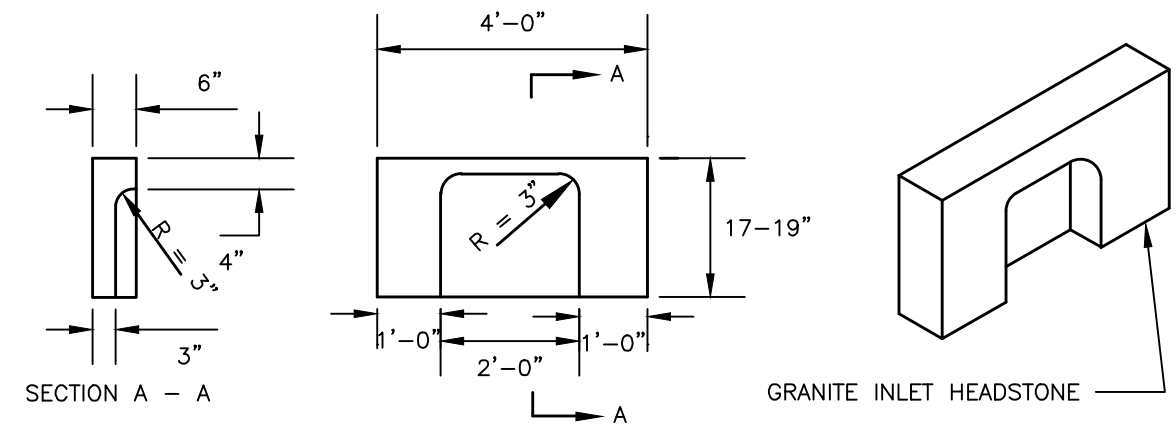
DRAWING NO.  
**C-44**



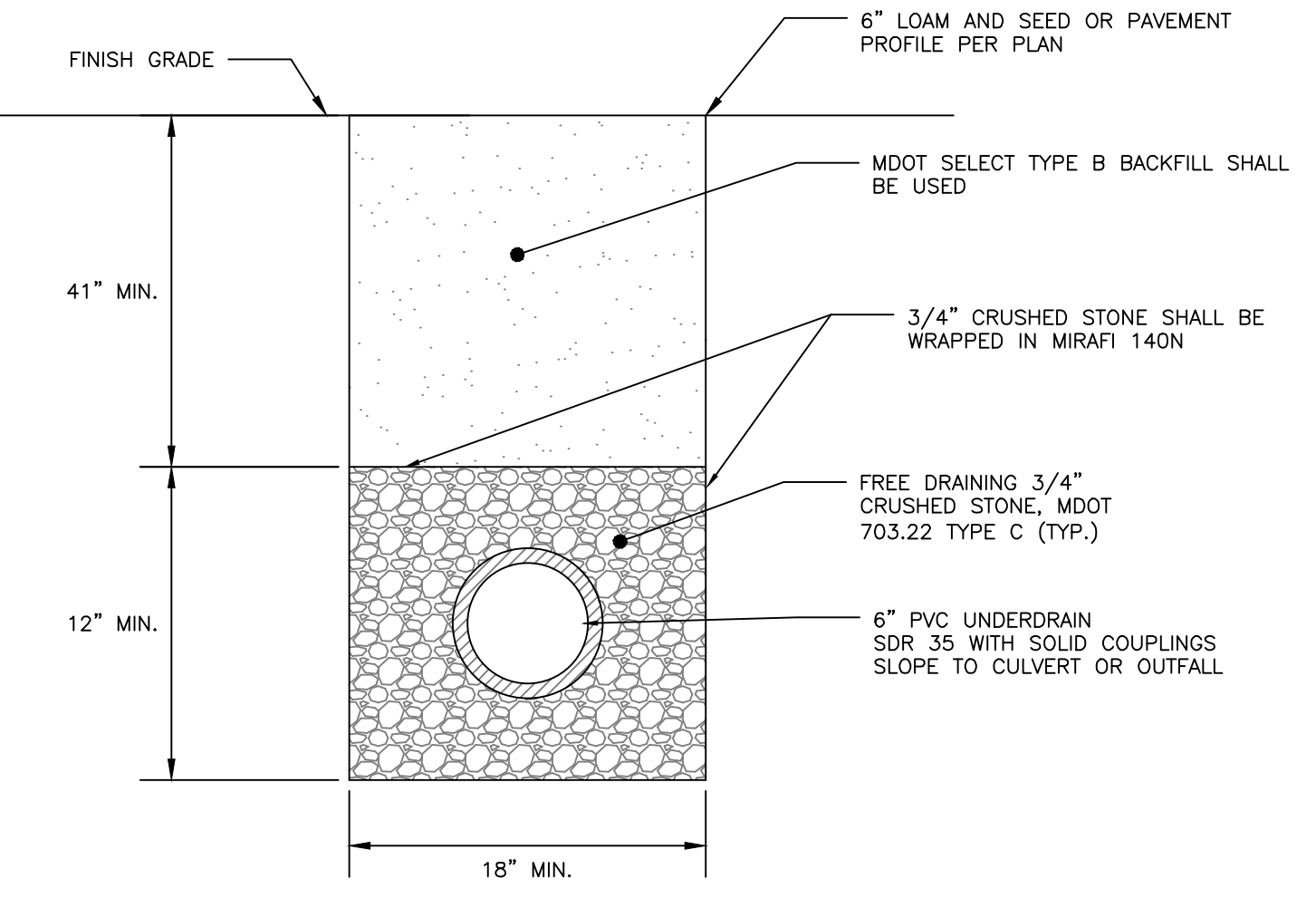
CITY OF PORTLAND PRECAST CONCRETE CATCH BASIN  
NOT TO SCALE



4'-0" ECCENTRIC PRECAST CATCH BASIN  
NOT TO SCALE

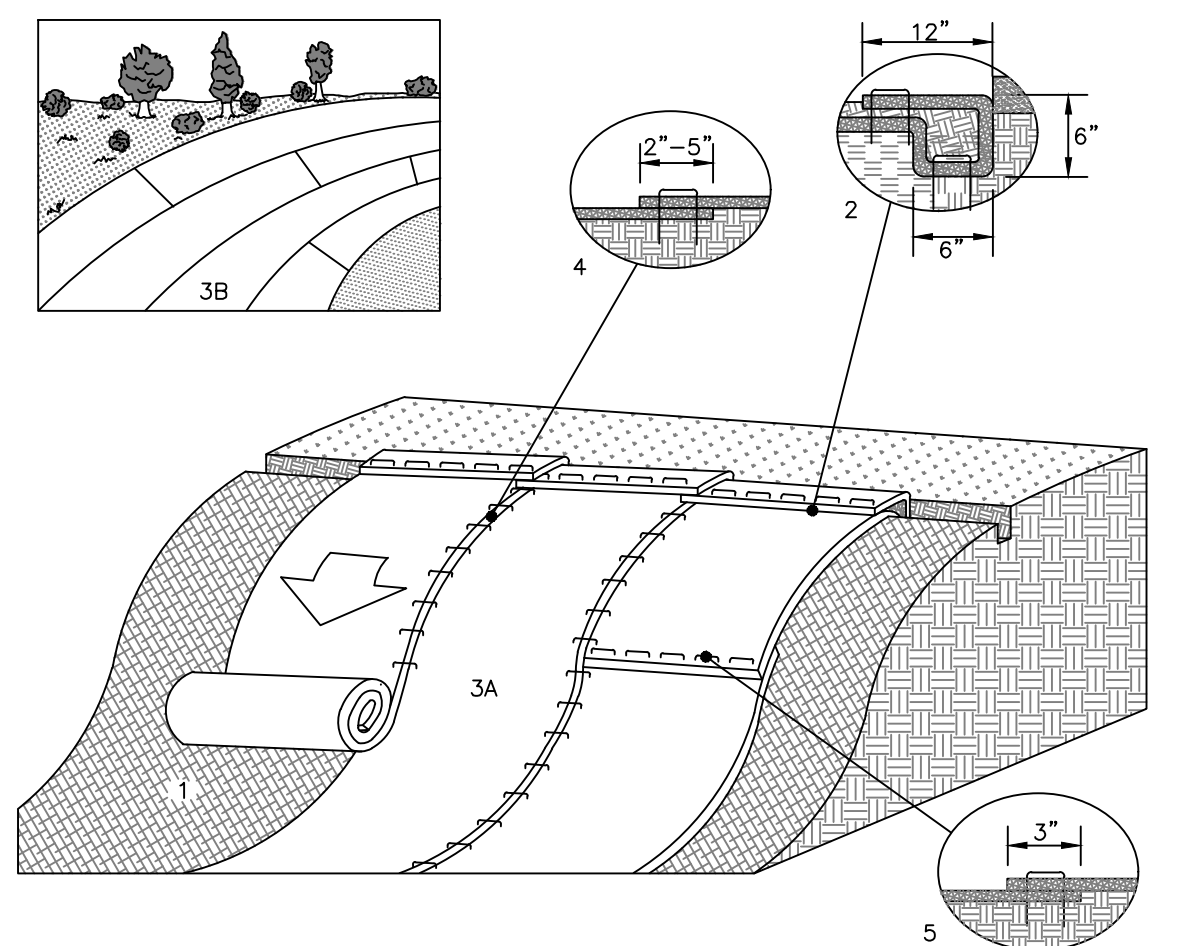


4' GRANITE HEADSTONE FOR CATCH BASIN INLET  
NOT TO SCALE



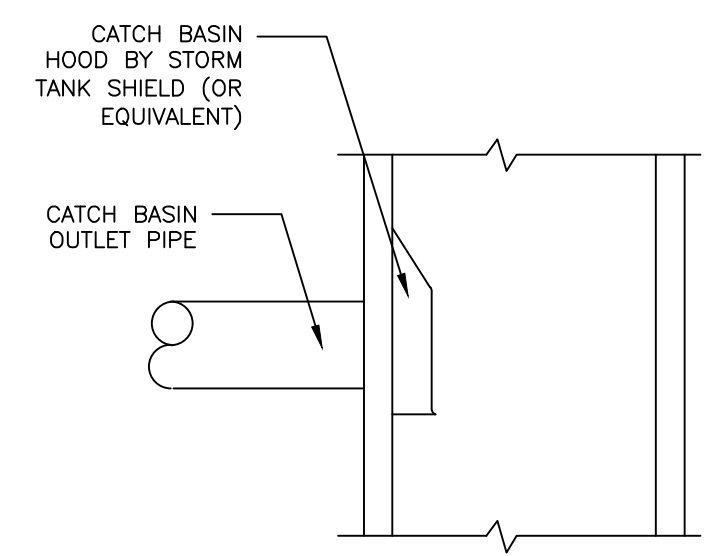
- NOTES:
1. MINIMUM UNDERDRAIN SLOPE = 0.00156
  2. PERFORATIONS IN UNDERDRAIN PIPE SHALL BE ORIENTED DOWN.

UNDERDRAIN DETAIL  
NOT TO SCALE



- SLOPE INSTALLATION DETAIL
1. PREPARE SOIL BEFORE INSTALLING ROLLED EROSION CONTROL PRODUCTS (ECB), INCLUDING ANY NECESSARY APPLICATION OF LIME, FERTILIZER, AND SEED
  2. BEGIN AT THE TOP OF THE SLOPE BY ANCHORING THE ECB IN A 6" DEEP X 6" WIDE TRENCH WITH APPROXIMATELY 12" OF ECB EXTENDED BEYOND THE UP-SLOPE PORTION OF THE TRENCH. ANCHOR THE ECB WITH A ROW OF STAPLES/STAKES APPROXIMATELY 12" APART IN THE BOTTOM OF THE TRENCH. BACKFILL AND COMPACT THE TRENCH AFTER STAPLING. APPLY SEED TO THE COMPACTED SOIL AND FOLD THE REMAINING 12" PORTION OF ECB BACK OVER THE SEED AND COMPACTED SOIL. SECURE ECB OVER COMPACTED SOIL WITH A ROW OF STAPLES/STAKES SPACED APPROXIMATELY 12" APART ACROSS THE WIDTH OF THE ECB.
  3. ROLL THE ECB (A) DOWN OR (B) HORIZONTALLY ACROSS THE SLOPE. ECB WILL UNROLL WITH APPROPRIATE SIDE AGAINST THE SOIL SURFACE. ALL ECB MUST BE SECURELY FASTENED TO SOIL SURFACE BY PLACING STAPLES/STAKES IN APPROPRIATE LOCATIONS AS SHOWN IN THE STAPLE PATTERN GUIDE.
  4. THE EDGES OF PARALLEL ECB MUST BE STAPLED WITH APPROXIMATELY 2" - 5" OVERLAP DEPENDING ON THE ECB TYPE.
  5. CONSECUTIVE ECB SPliced DOWN THE SLOPE, MUST BE END OVER END (SHINGLE STYLE) WITH AN APPROXIMATE 3" OVERLAP. STAPLE THROUGH OVERLAPPED AREA, APPROXIMATELY 12" APART ACROSS ENTIRE ECB WIDTH.
- \*NOTE:  
IN LOOSE SOIL CONDITIONS, THE USE OF STAPLE OR STAKE LENGTHS GREATER THAN 6" MAY BE NECESSARY TO PROPERLY SECURE THE ECB.

EROSION CONTROL BLANKET SLOPE INSTALLATION  
NOT TO SCALE



- NOTES:
1. INSTALL CATCH BASIN HOODS IN ALL CATCH BASINS UNLESS OTHER WISE NOTED
  2. PREFERRED STYLE DESIGNED TO ELIMINATE CEMENTING OF THE TRAP.
  3. REFER TO MANUFACTURER'S RECOMMENDATIONS FOR INSTALLATION REQUIREMENTS

CATCH BASIN HOOD DETAIL  
NOT TO SCALE

PRELIMINARY  
NOT ISSUED FOR  
CONSTRUCTION