

NFPA 1 UNIFORM FIRE CODE/2006 NFPA: CODE DATA		
	BASEMENT & FIRST FLOORS	SECOND & THIRD FLOORS
USE GROUP CLASSIFICATION (A.3.3.152)	CH. 28 HOTELS & DORMITORIES	CH. 30 APARTMENT BUILDINGS
TYPE OF CONSTRUCTION/ MINIMUM CONSTRUCTION REQUIREMENTS	II (1,1,1)	V (0,0,0)
OCCUPANT LOAD	200 SF/PP	200 SF/PP
SEPARATION OF GROUP CLASSIFICATION	1 HOUR	1 HOUR
EXTERIOR BEARING WALLS (Table A.8.2.1.2)	1 HOUR (FIRST FLOOR ONLY)	0 HOURS
EXTERIOR/INTERIOR NONBEARING WALLS	0 HOUR (FIRST FLOOR ONLY)	0 HOURS
INTERIOR BEARING WALLS	1 HOUR	0 HOURS
COLUMNS	1 HOUR	0 HOURS
BEAMS, GIRDERS, TRUSSES	1 HOUR	0 HOURS
FLOOR CONSTRUCTION	1 HOUR	0 HOURS
ROOF CONSTRUCTION	N/A	0 HOURS
MECHANICAL / ELECTRICAL ROOMS	1 HOUR	1 HOUR
UNIT SEPARATION	1/2 HOUR	1/2 HOUR
BUILDING AREA PER GROUP CLASSIFICATION	16,133 SF	15,090 SF
TOTAL BUILDING AREA	31,345 SF	
BUILDING HEIGHT	45'-0"	45'-0"
FIRE SUPPRESSION:	TOTAL BUILDING AUTOMATIC SPRINKLER SYSTEM	TOTAL BUILDING AUTOMATIC SPRINKLER SYSTEM
HAZARD	1 HOUR	1 HOUR
COMMON PATH LIMIT - TABLE A.7.6	50 FEET	50 FEET
DEAD-END LIMIT	50 FEET	50 FEET
TRAVEL DISTANCE LIMIT	200 FEET	200 FEET
EXITS	1 HOUR	2 HOUR
CORRIDOR WIDTH	44 IN.	44 IN.
STAIR ENCLOSURES	1 HOUR	1 HOUR
SHAFTS	1 HOUR	1 HOUR
EXIT ACCESS CORRIDORS	1/2 HOUR	1/2 HOUR
FIRE EXTINGUISHERS	LOCATE 75' APART MAXIMUM LOCATIONS TO BE FIELD VERIFIED BY FIRE CHIEF PRIOR TO INSTALLATION	
FLAME SPREAD RATINGS:		
INTERIOR WALL & CEILING FINISH REQUIREMENTS (SPRINKLERED BLDG)		
EXIT ENCLOSURES	CLASS A	CLASS A
LOBBIES & CORRIDORS	CLASS A OR B	CLASS A OR B
OTHER SPACES	CLASS A, B OR C	CLASS A, B OR C
INTERIOR FLOOR FINISH REQUIREMENTS		
EXITS	CLASS II	CLASS II
CORRIDORS	CLASS II	CLASS II
GENERAL NOTES	1. ALL PENETRATIONS OF SMOKE BARRIERS, PARTITIONS, FIRE RATED WALLS AND FLOORS SHALL BE SEALED WITH PROPER APPROVED MATERIALS. 2. ALL WORK SHALL CONFORM TO LOCAL AND STATE CODES, ORDINANCES, AND REQUIREMENTS, ACCESSIBILITY PER A.D.A.A.G. 3. PROVIDE NFPA 13 FIRE PROTECTION SYSTEM	

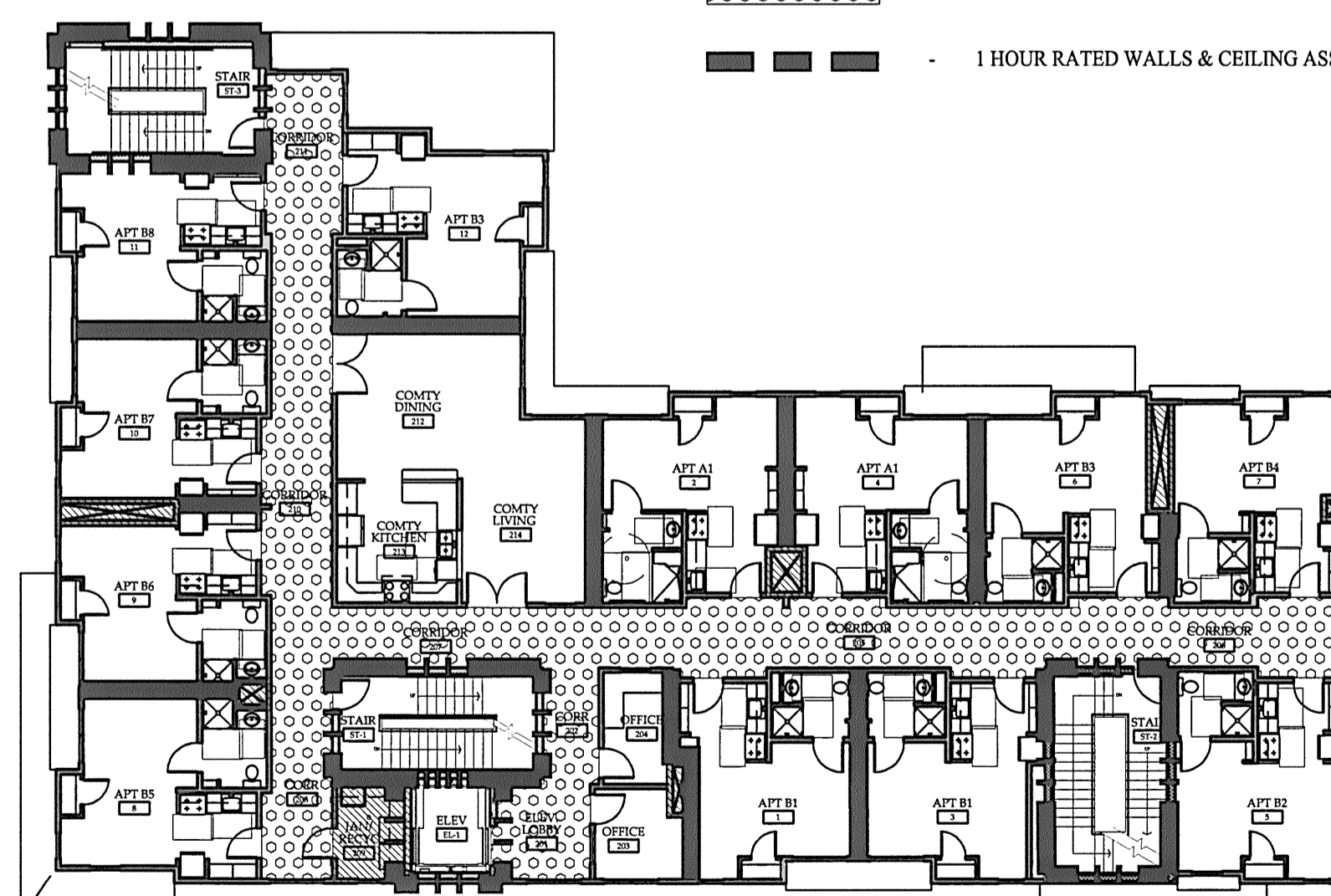
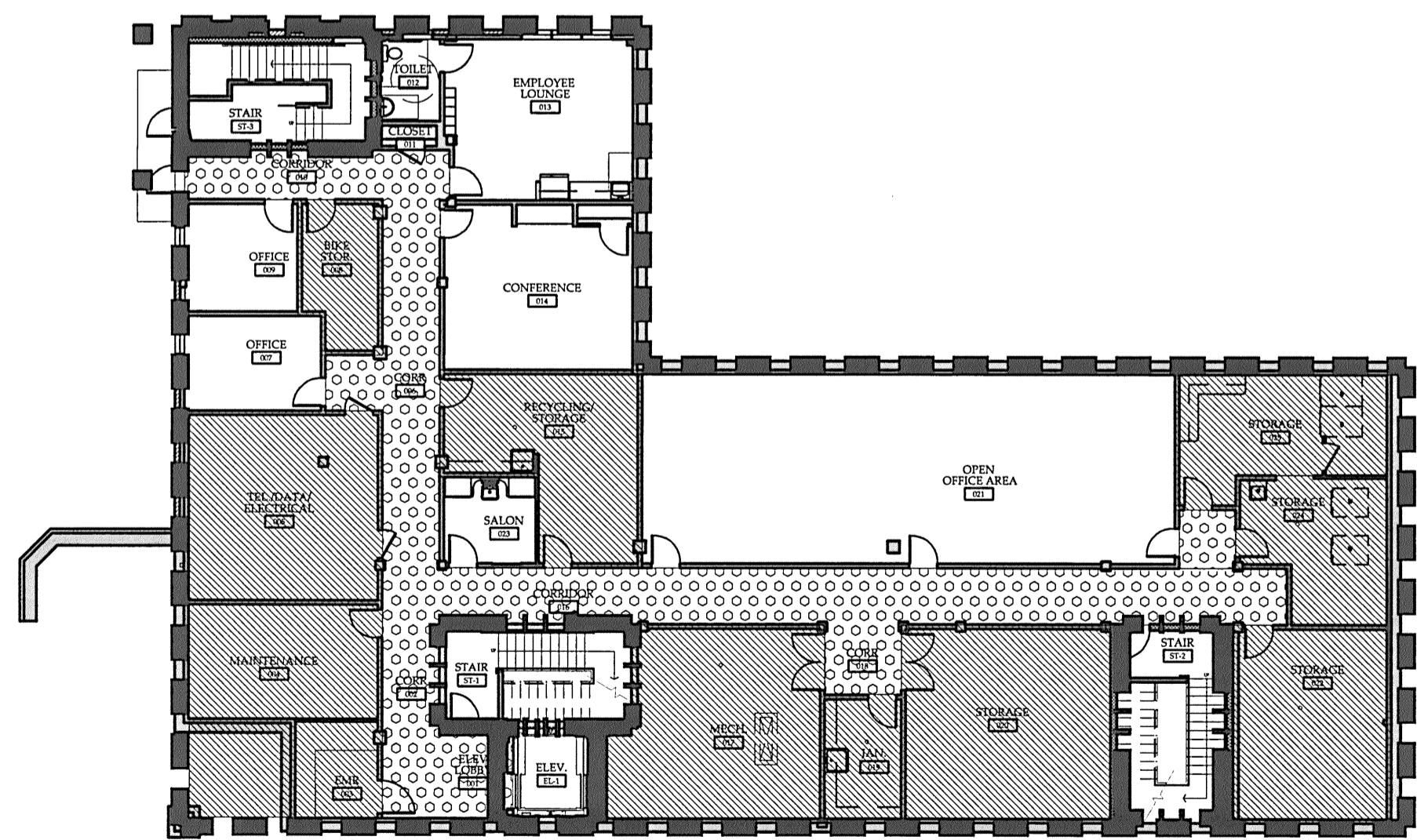
J1 FIRST FLOOR CODE REVIEW PLAN

1/16" = 1'-0"

J8 THIRD FLOOR CODE REVIEW PLAN

1/16" = 1'-0"

J15 NFPA 2006 CODE REVIEW



- LEGEND :
- 2 HOUR RATED FIRE WALLS
 - 1 HOUR RATED ROOM ENCLOSURE
 - 1 HOUR RATED WALLS- UNIT SEPARATION
 - AREA ENCLOSED BY SMOKE PARTITIONS
 - 1 HOUR RATED WALLS & CEILING ASSEMBLY

2006 IBC: CODE DATA		
	BASEMENT & FIRST FLOOR	SECOND & THIRD FLOORS
OCCUPANT LOAD	200	200
USE GROUP CLASSIFICATION	R-1	R-2
TYPE OF CONSTRUCTION	VA	VA
ACTUAL BUILDING AREA BY USE GROUP	16,133 SF	15,090 SF
ACTUAL BUILDING AREA TOTAL	31,345 SF	
TABLE 503 BUILDING AREA LIMITATION - SQ. FT.	3 / 12,000 SF	3 / 12,000 SF
506.3 AUTOMATIC SPRINKLER SYSTEM (INCREASE 200%) - SQ. FT.	4 / 24,000 SF	4 / 24,000 SF
BUILDING HEIGHT	45'-0"	45'-0"
EXIT ACCESS TRAVEL DISTANCE	250'-0"	250'-0"
DEAD END CORRIDORS	20'-0"	20'-0"
CORRIDOR WIDTH	44"	44"
STAIRWAY WIDTH	44"	44"
FIRE RATING:		2 HOURS
OCCUPANCY SEPARATION		
EXTERIOR BEARING WALLS	1 HOUR	1 HOUR
INTERIOR BEARING WALLS	1 HOUR	1 HOUR
NON-BEARING WALLS & PARTITIONS	0 HOUR	0 HOUR
FLOOR CONSTRUCTION	1 HOUR	1 HOUR
ROOF CONSTRUCTION	0 HOUR	1 HOUR
CORRIDORS	1/2 HOUR	1/2 HOUR
STAIR ENCLOSURES	2 HOURS	2 HOURS
SHAFTS	2 HOURS FOR 4+ STORIES 1 HOUR FOR < 4 STORIES	2 HOURS FOR 4+ STORIES 1 HOUR FOR < 4 STORIES
UNIT SEPARATION	1 HOUR	1 HOUR
MECHANICAL/ELECTRICAL ROOMS	1 HOUR	1 HOUR
LAUNDRY/STORAGE >100 SF	1 HOUR	1 HOUR
WASTE COLLECTION >100 SF	1 HOUR	1 HOUR
FIRE EXTINGUISHERS	LOCATIONS TO BE FIELD VERIFIED BY FIRE CHIEF PRIOR TO INSTALLATION	
FLAME SPREAD RATINGS:		
INTERIOR WALL & CEILING FINISH REQUIREMENTS		
EXIT ENCLOSURES & EXIT PASSAGEWAYS	B	C
CORRIDORS	C	C
ROOMS OR ENCLOSED SPACES	C	C
INTERIOR FLOOR FINISH REQUIREMENTS		
EXIT ENCLOSURES & EXIT PASSAGEWAYS	CLASS II	CLASS II
CORRIDORS	CLASS II	CLASS II
GENERAL NOTES	1. ALL PENETRATIONS OF SMOKE BARRIERS, PARTITIONS, FIRE RATED WALLS AND FLOORS SHALL BE SEALED WITH PROPER APPROVED MATERIALS. 2. ALL WORK SHALL CONFORM TO LOCAL AND STATE CODES, ORDINANCES, AND REQUIREMENTS, ACCESSIBILITY PER A.D.A.A.G.	

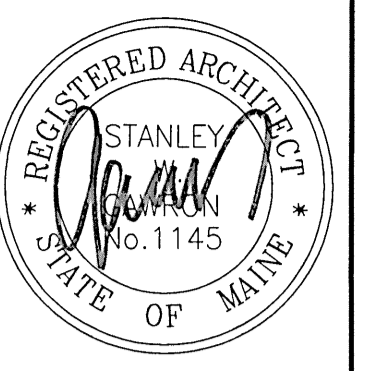
A1 BASEMENT CODE REVIEW PLAN

1/16" = 1'-0"

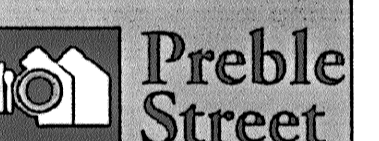
A8 SECOND FLOOR CODE REVIEW PLAN

1/16" = 1'-0"

A15 IBC 2006 CODE REVIEW



FLORENCE HOUSE
190 VALLEY STREET
PORTLAND, MAINE



REVISIONS		
#	DATE	DESCRIPTION
1	4.03.07	CONTRACT ZONE SUBMISSION
2	5.01.07	CONTRACT ZONE SUBMISSION
3	7.10.07	CONTRACT ZONE SUBMISSION
4	9.04.07	SITE PLAN AND SUBDIVISION REVIEW
5	10.02.07	FINAL SITE PLAN REVIEW
6	11.15.07	50% REVIEW SET
7	12.04.07	50% MAINE HOUSING REVIEW SET
8	05.02.08	95% MAINE HOUSING REVIEW SET
9	07.31.08	100% MAINE HOUSING REVIEW SET
10	09.02.08	100% BID DOCUMENTS

DATE:	09/02/08
PROJECT #:	100405
DRAWN BY:	AEP
CHECKED BY:	RLD
DRAWING SCALE:	AS NOTED

SHEET TITLE
CODE REVIEW PLAN

G102

© COPYRIGHT 1985-2008 REPRODUCTION OR USE OF THIS DOCUMENT WITHOUT WRITTEN PERMISSION OF GAWRON TURGEON ARCHITECTS IS PROHIBITED.

