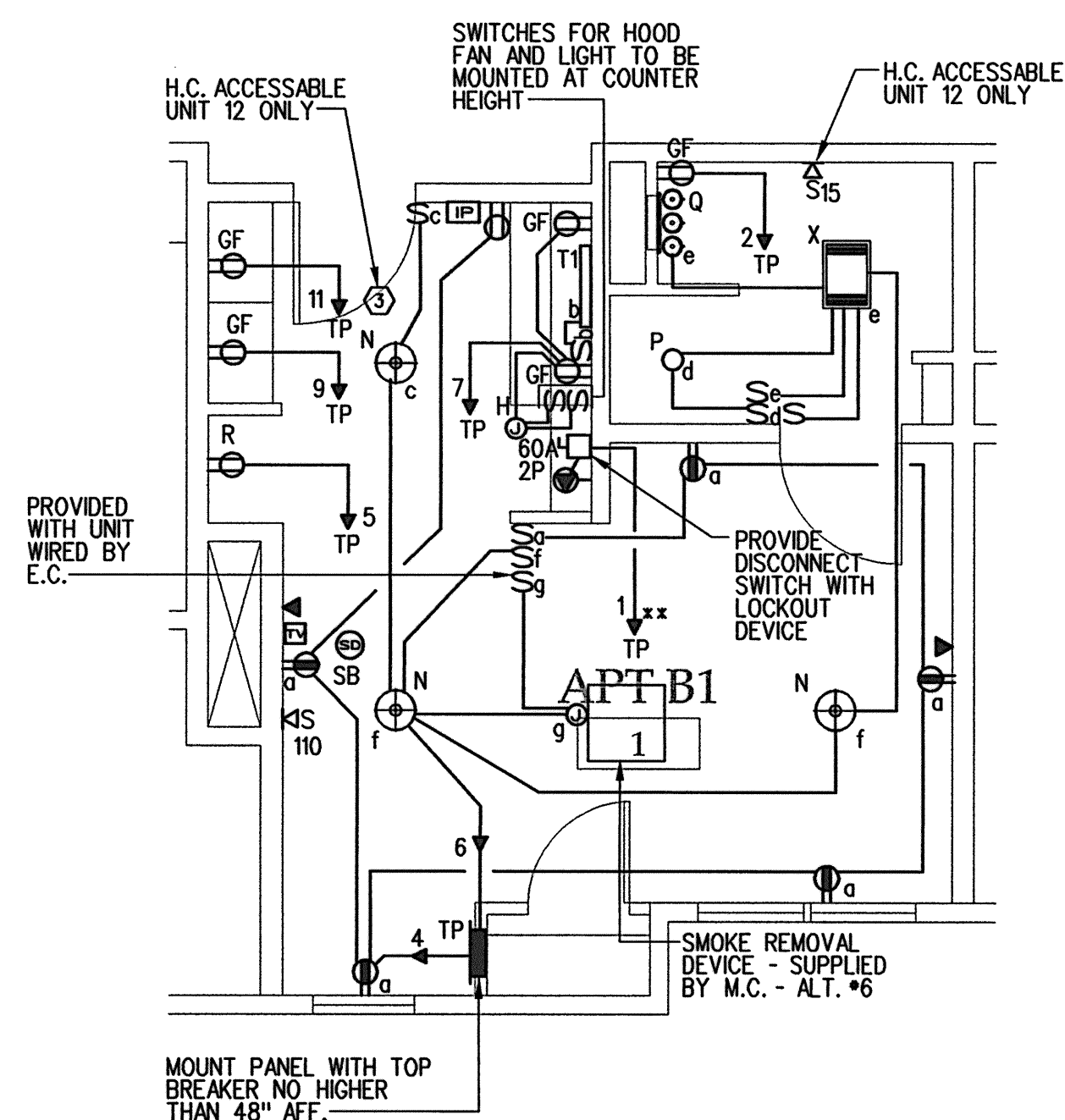
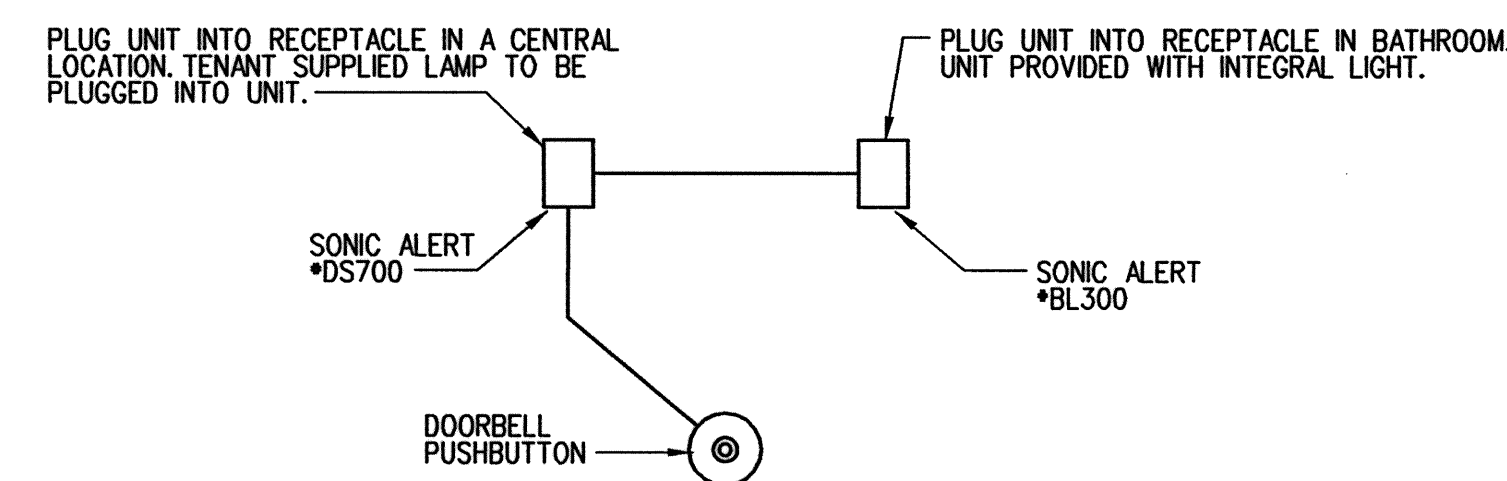


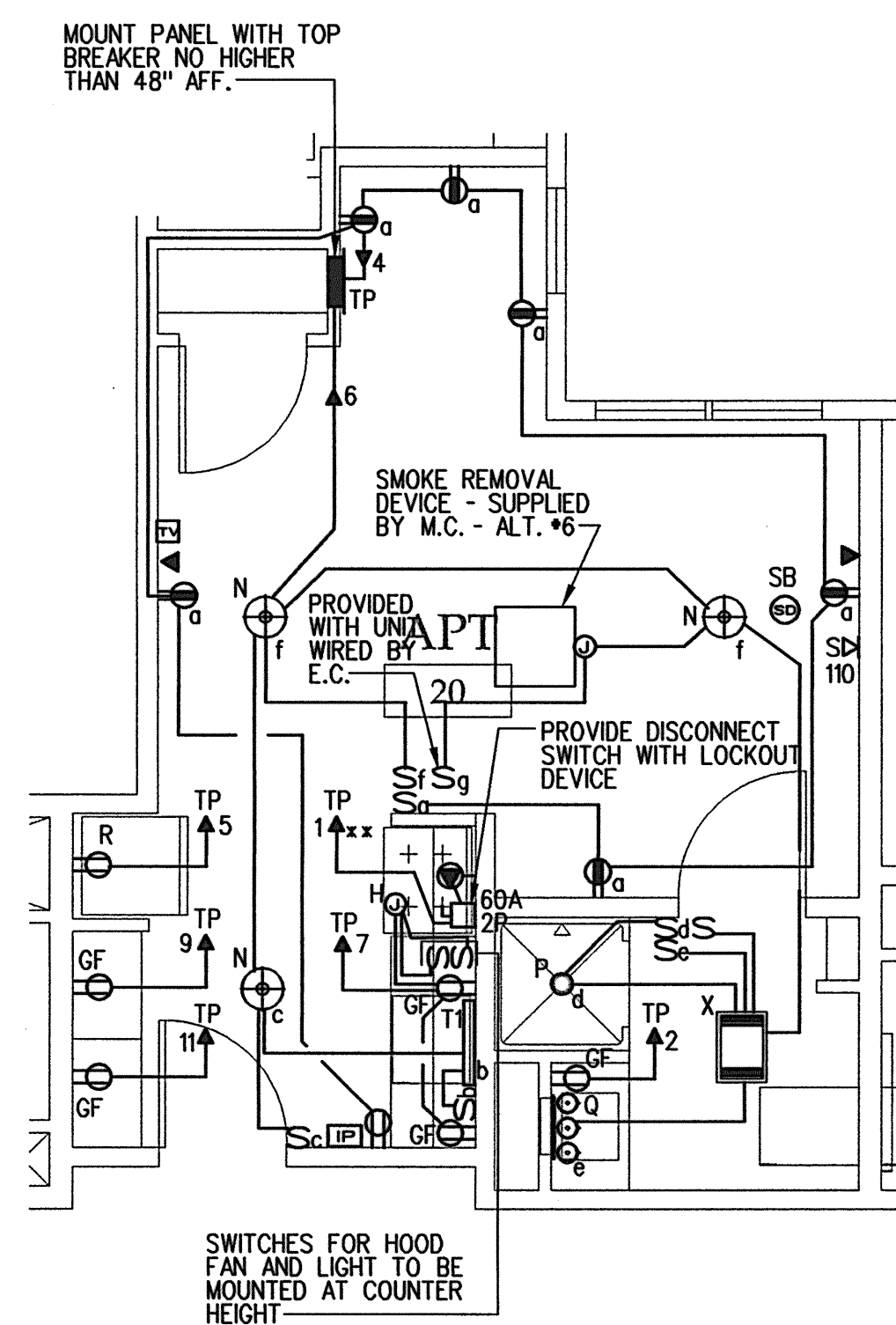
TYPICAL UNIT ELECTRICAL PLAN (UNIT 2 AND UNIT 4)
SCALE: 1/4"=1'-0"



TYPICAL UNIT ELECTRICAL PLAN
SCALE: 1/4"=1'-0"



VISUAL DOOR SIGNAL SYSTEM WIRING DIAGRAM
(UNIT 2 ONLY)
SCALE: NONE



UNIT ELECTRICAL PLAN (UNIT 20 ONLY)
SCALE: 1/4"=1'-0"

GENERAL NOTES:

1. SWITCHES, OUTLETS, TEL JACKS AND TV JACKS TO BE STAGGERED IN COMMON WALLS BETWEEN UNITS - TYPICAL. PROVIDE PUTTY PADS IN INSTANCES WHERE DEVICES CANNOT BE PROPERLY STAGGERED.
2. ELECTRICAL PANELS IN ALL UNITS SHALL BE MOUNTED WITH TOP BREAKER NOT HIGHER THAN 48".
3. CONTRACTOR SHALL ROUGH IN BOXES IN ONE OF EACH UNIT TYPE FOR REVIEW IN THE FIELD BY THE OWNER.
4. MINIMUM WIRE SIZE IS #12 AWG - #14 AWG WIRE IS NOT PERMITTED PER MSHA STANDARD.
5. PROVIDE AIR-VAPOR BARRIER ELECTRICAL BOXES AT EXTERIOR WALLS. LESSCO OR EQUIVALENT

UNIT FIRE ALARM SEQUENCE NOTES:

1. ON BUILDING SYSTEM ACTIVATION ALL AUDIO/VISUAL AND VISUAL ONLY DEVICES SHALL ALARM.
2. WHEN UNIT SMOKE DETECTOR GOES INTO ALARM ALL AUDIO/VISUAL AND VISUAL ONLY DEVICES WITHIN THAT UNIT WILL ACTIVATE. THIS WILL NOT TRIP THE ENTIRE BUILDING SYSTEM. IT WILL ANNUNCIATE AT THE FACP.

NOTES:

- ① NOT USED
- ② NOT USED
- ③ SEE VISUAL DOOR SIGNAL SYSTEM WIRING DIAGRAM ON THIS DRAWING.

REVISIONS

#	DATE	DESCRIPTION
1	4.03.07	CONTRACT ZONE SUBMISSION
2	5.01.07	CONTRACT ZONE SUBMISSION
3	7.10.07	CONTRACT ZONE SUBMISSION
4	9.04.07	SITE PLAN AND SUBVISION REVIEW
5	10.02.07	FINAL SITE PLAN REVIEW
6	11.15.07	50% REVIEW SET
7	12.04.07	50% MAINE HOUSING REVIEW SET
8	05.02.08	90% MAINE HOUSING REVIEW SET
9	07.31.08	100% MAINE HOUSING REVIEW SET
10	08.02.08	100% BID DOCUMENTS

DATE:	09/02/08
PROJECT #	100405
DRAWN BY:	SPD
CHECKED BY:	CWA
DRAWING SCALE	AS NOTED

SHEET TITLE

TYPICAL UNITS
ELECTRICAL PLAN

E 400