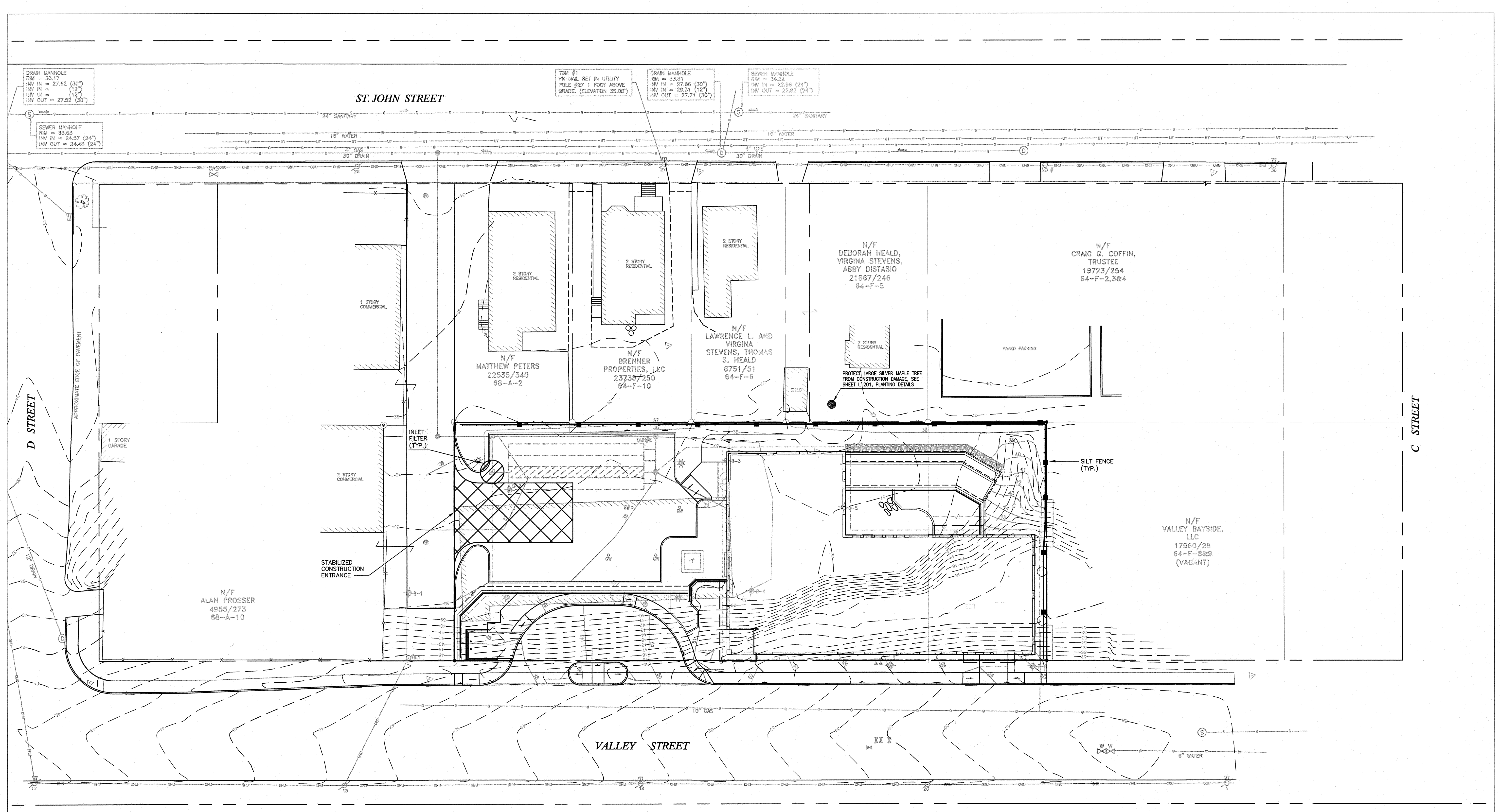


REVISIONS		
#	DATE	DESCRIPTION
1	12.7.07	MAINE HOUSING 50% REVIEW SET
2	5.2.08	90% MAINE HOUSING REVIEW SET
3	7.31.08	100% MAINE HOUSING REVIEW SET
4	9.2.08	100% BID DOCUMENTS

DATE:	12.7.07
PROJECT #	100405
DRAWN BY:	BVD
CHECKED BY:	WCH
DRAWING SCALE	1"=20'-0"

SHEET TITLE
 EROSION AND SEDIMENTATION CONTROL PLAN

C 104



	EXISTING	PROPOSED		EXISTING	PROPOSED
PROPERTY LINE			WATER SERVICE		
MONUMENT FOUND			SEWER SERVICE		
REBAR FOUND			STORM DRAIN		
CONTOUR			GAS SERVICE		
CATCHBASIN			UNDERGROUND TELEPHONE		
SEWER MANHOLE			OVERHEAD WIRES		
DRAIN MANHOLE			BASE OF WALL		
GEOHERMAL WELL			SIGN		
WATER VALVE			TEST BORING		
FIRE HYDRANT			SILT FENCE		
GAS VALVE			STABILIZED CONSTRUCTION ENTRANCE		
UTILITY POLE			INLET FILTER		
UTILITY POLE WITH LIGHT					
LIGHT POLE					

- NOTES**
- REFER TO DRAWING C307 FOR EROSION AND SEDIMENTATION CONTROL DETAILS AND NOTES.
 - ALL SLOPES STEEPER THAN 3:1 SHALL BE PROTECTED WITH CURLEX BLANKETS BY AMERICAN EXCELSIOR. INSTALL IN ACCORDANCE WITH MANUFACTURER'S SPECIFICATIONS.
 - FOR TEMPORARY STABILIZATION INSTALL TENAX MULTIMAT FABRIC ON ALL SLOPES EQUAL TO OR STEEPER THAN 8% BETWEEN OCTOBER 1 AND APRIL 15 AND EQUAL TO OR STEEPER THAN 15% BETWEEN APRIL 15 AND OCTOBER 1. INSTALL IN ACCORDANCE WITH MANUFACTURER'S SPECIFICATIONS.
 - CONTRACTOR SHALL MINIMIZE FUGITIVE DUST EMISSIONS BY SWEEPING THE ADJACENT STREETS AS REQUIRED AND BY APPLYING WATER OR OTHER ENVIRONMENTALLY SOUND DUST CONTROL SOLUTION (CALCIUM CHLORIDE) ON SITE AS REQUIRED.

Mitchell & Associates
 LANDSCAPE ARCHITECTS
 The Staples School
 70 Center Street
 Portland, Maine 04101
 Tel: (207) 774-4427
 Fax: (207) 874-2460
 www.mitchellassociates.biz

GP Gorrill-Palmer Consulting Engineers, Inc.
 Traffic and Civil Engineering Services
 P.O. Box 1237
 15 Shaker Road
 Gray, ME 04039
 Tel: 207-657-6910
 Fax: 207-657-6912
 E-Mail: mailboz@gorrillpalmer.com

