

Gawron Turgeon ARCHITECTS
 29 Black Point Road
 Scarborough, Maine 04074
 www.gawronturgeon.com
 207-883-6307 ext. 207-883-6361 fax



FLORENCE HOUSE
 190 VALLEY STREET
 PORTLAND, MAINE



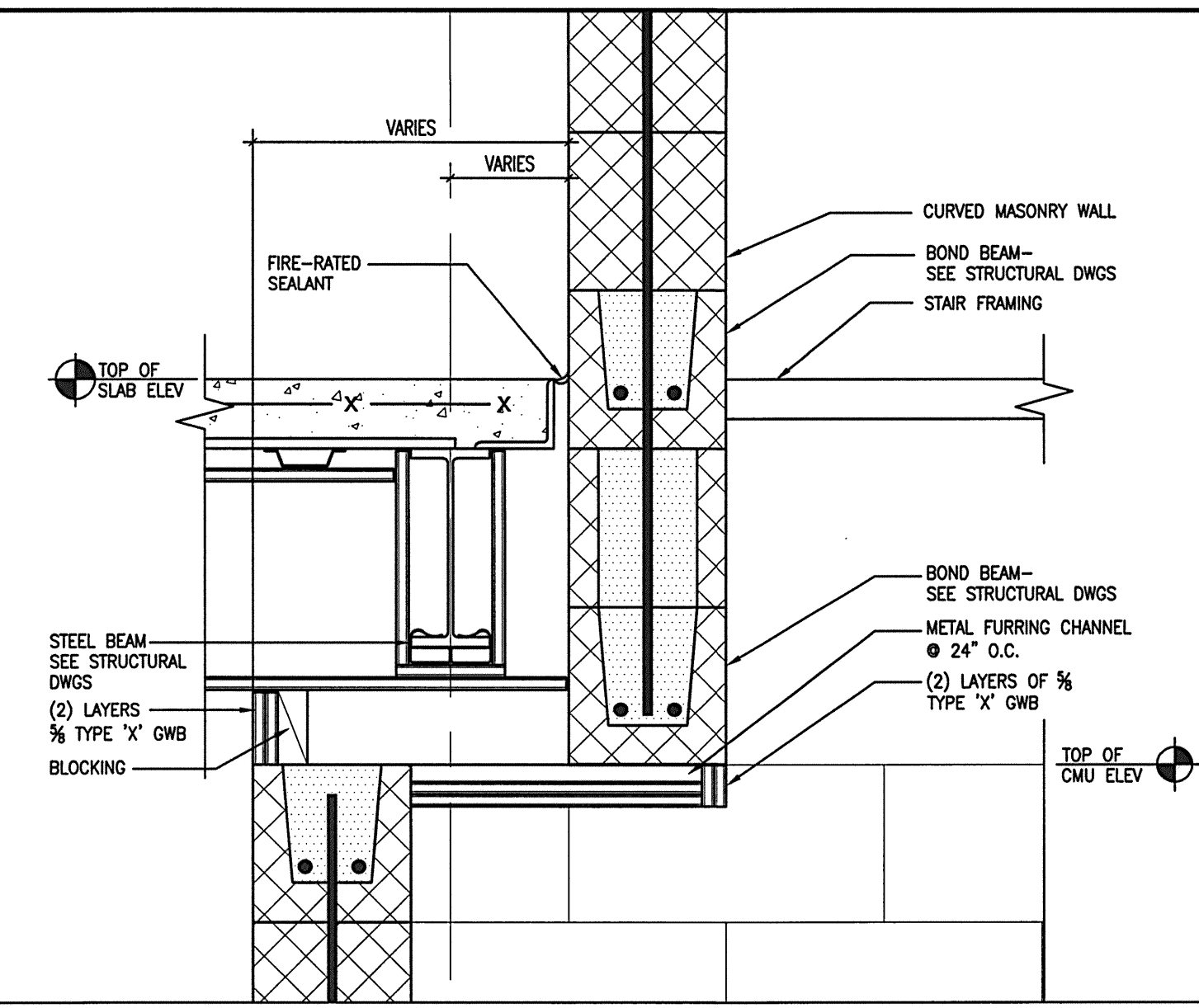
REVISIONS		
#	DATE	DESCRIPTION
1	4.03.07	CONTRACT ZONE SUBMISSION
2	5.01.07	CONTRACT ZONE SUBMISSION
3	7.10.07	CONTRACT ZONE SUBMISSION
4	9.04.07	SITE PLAN AND SUBDIVISION REVIEW
5	10.02.07	FINAL SITE PLAN REVIEW
6	11.15.07	50% REVIEW SET
7	12.04.07	50% MAINE HOUSING REVIEW SET
8	05.02.08	90% MAINE HOUSING REVIEW SET
9	07.31.08	100% MAINE HOUSING REVIEW SET
10	09.02.08	100% BID DOCUMENTS

DATE:	09/02/08
PROJECT #:	100405
DRAWN BY:	
CHECKED BY:	R.L.D.
DRAWING SCALE:	1/4" = 1'-0"

SHEET TITLE
 VERTICAL CIRCULATION

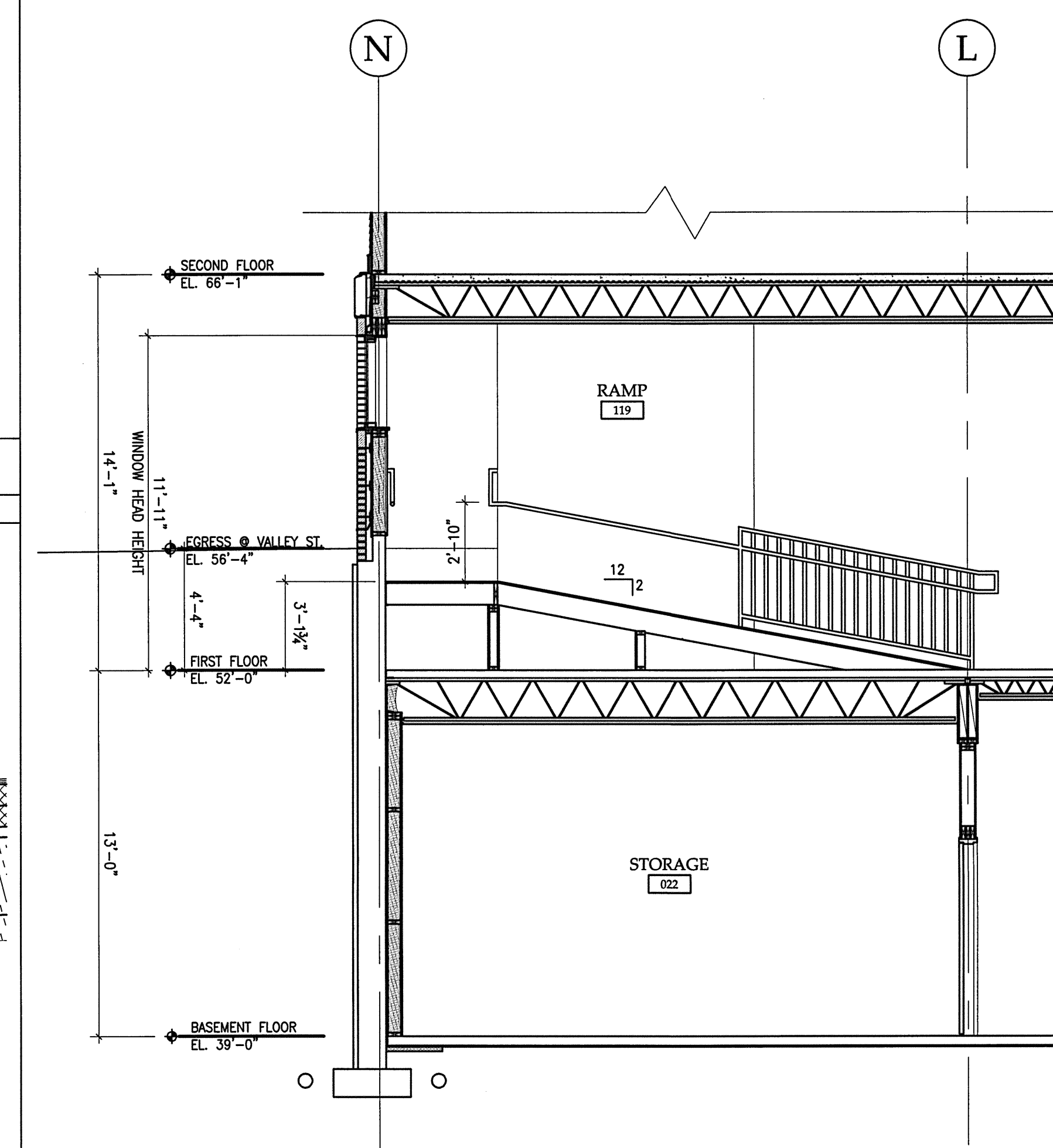
A704

© COPYRIGHT 1985-2008
 REPRODUCTION OR USE OF THIS DOCUMENT WITHOUT WRITTEN PERMISSION OF GAWRON TURGEON ARCHITECTS IS PROHIBITED.



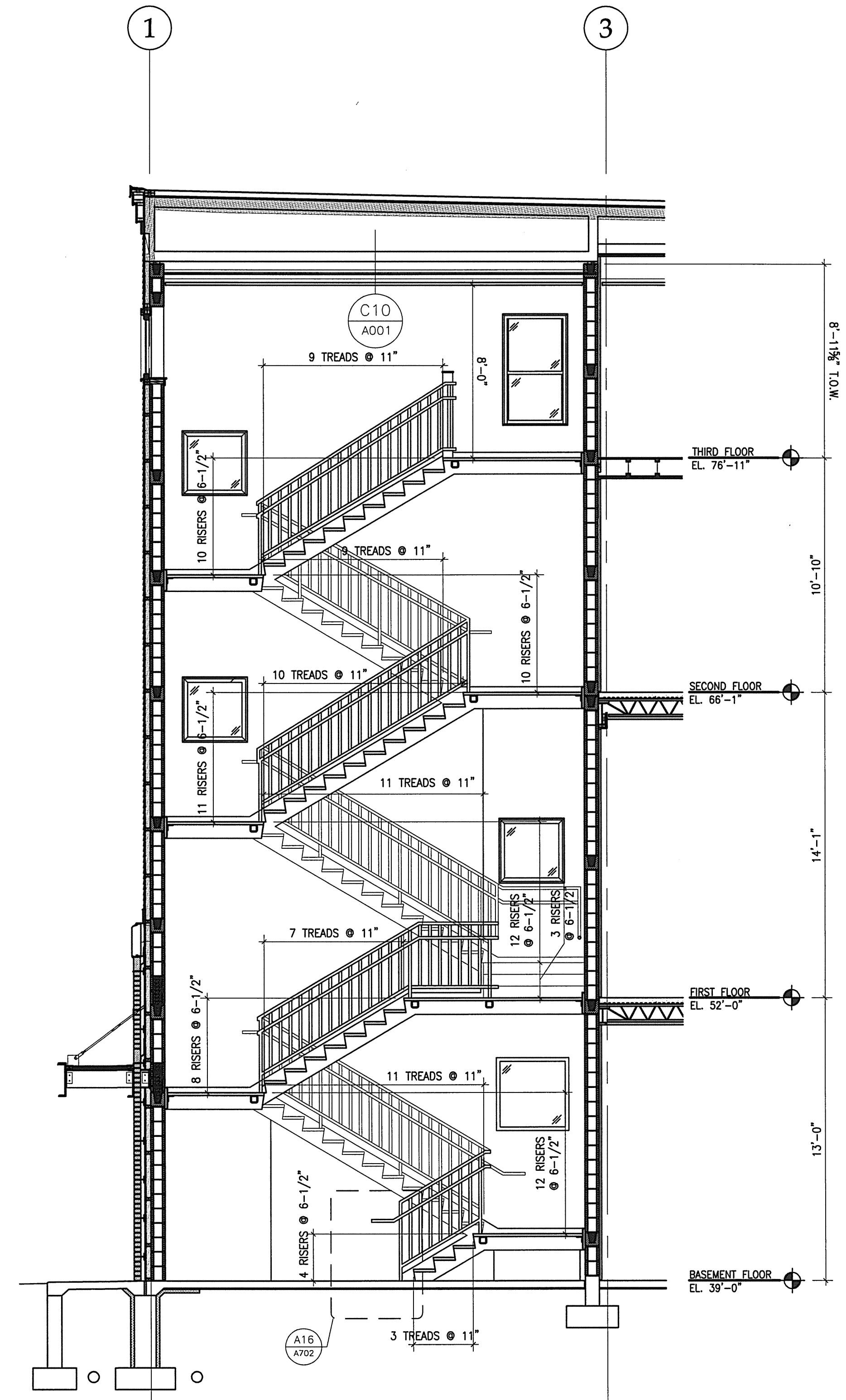
M8 DETAIL SECTION THROUGH STAIR 1

1 1/2"=1'-0" 2 HOUR RATING



A8 RAMP - SECTION/ELEVATION

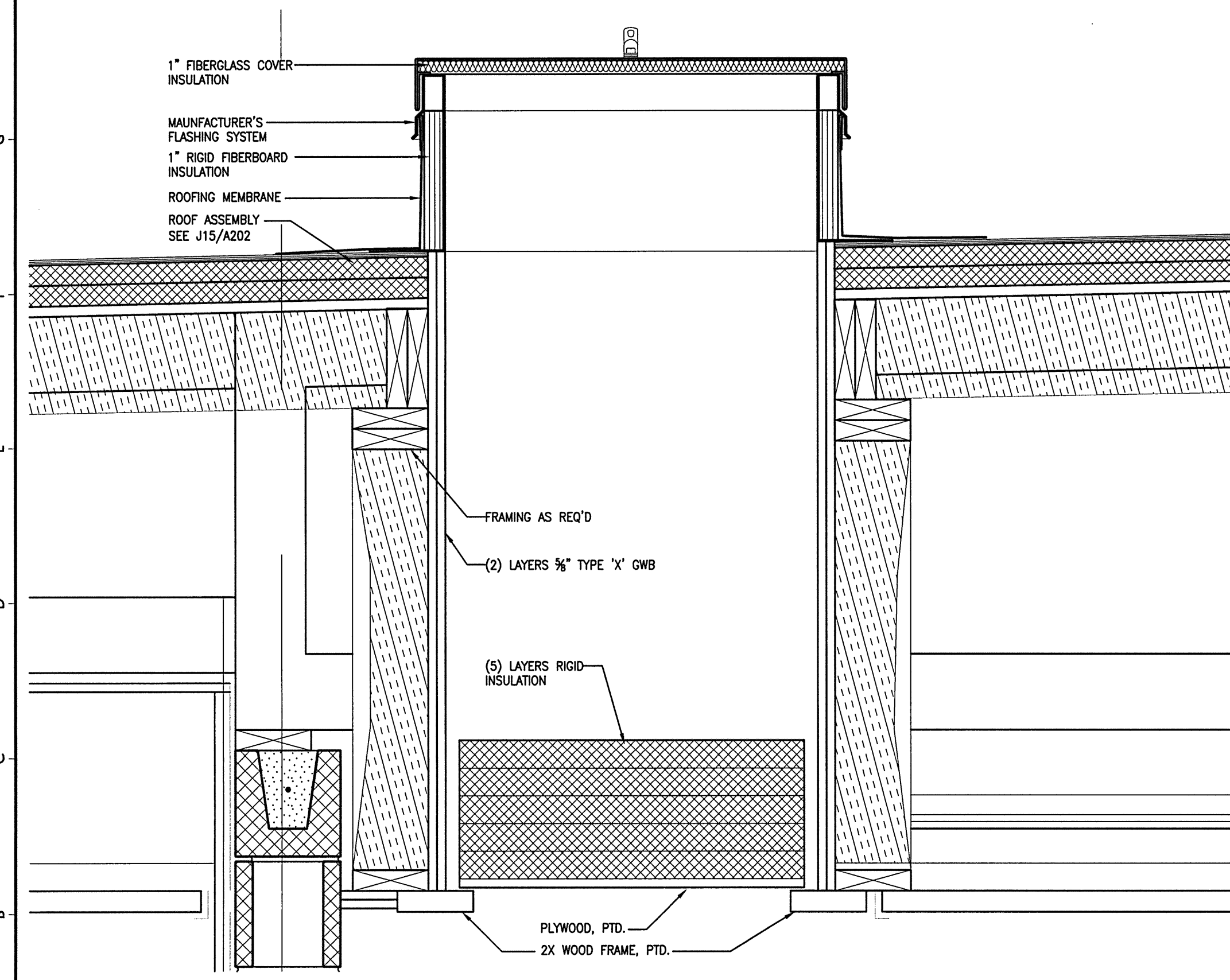
1/4"=1'-0"



A14 STAIR 3 - SECTION/ELEVATION

1/4"=1'-0"

H1 NOT USED



A1 ROOF HATCH DETAIL SECTION

1 1/2"=1'-0" SEE SPECIFICATIONS FOR ROOF HATCH MANUFACTURER

1 2 3 4 5 6 7 8 9 10 11 12 13 14 15 16 17 18 19 20