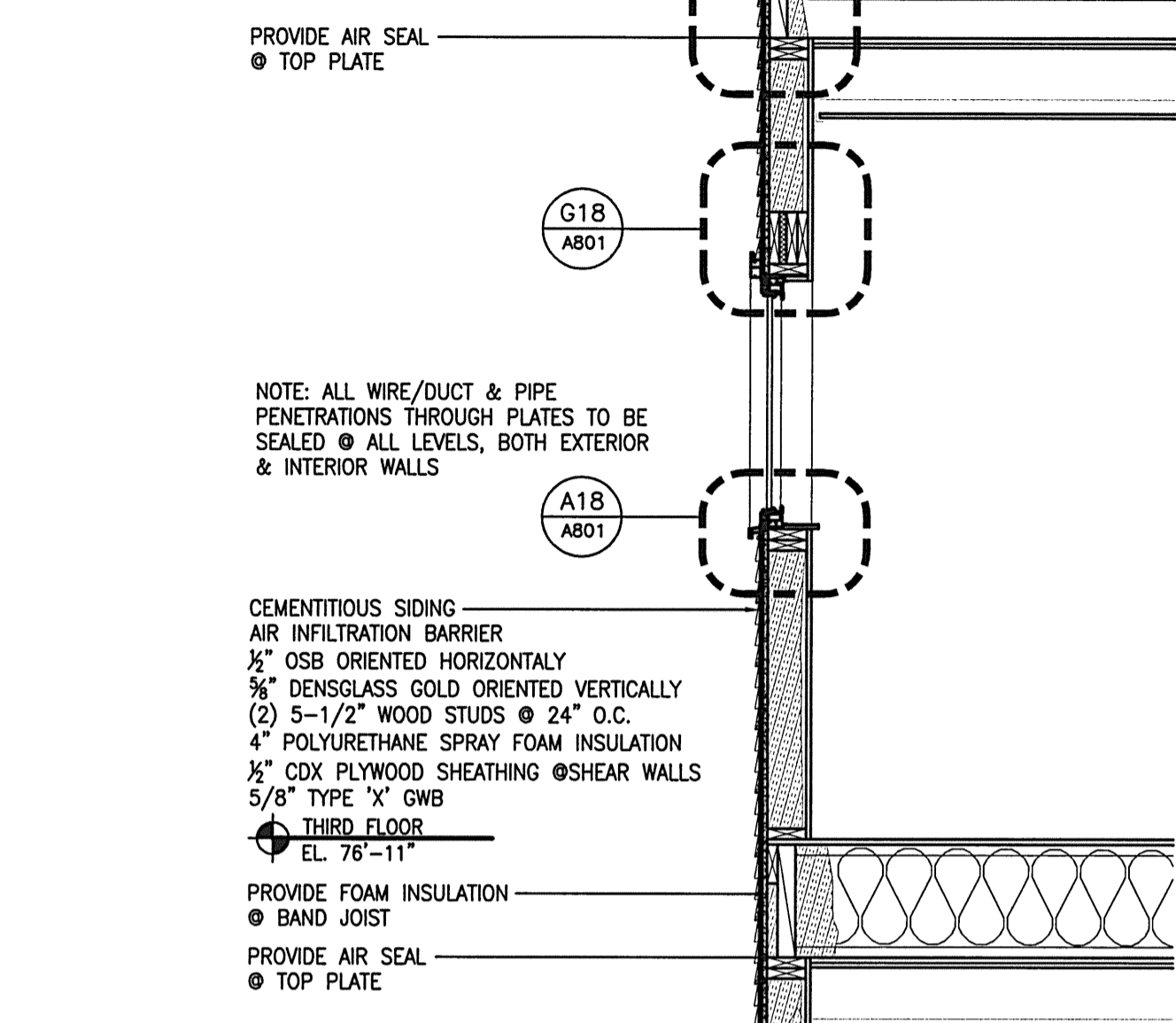


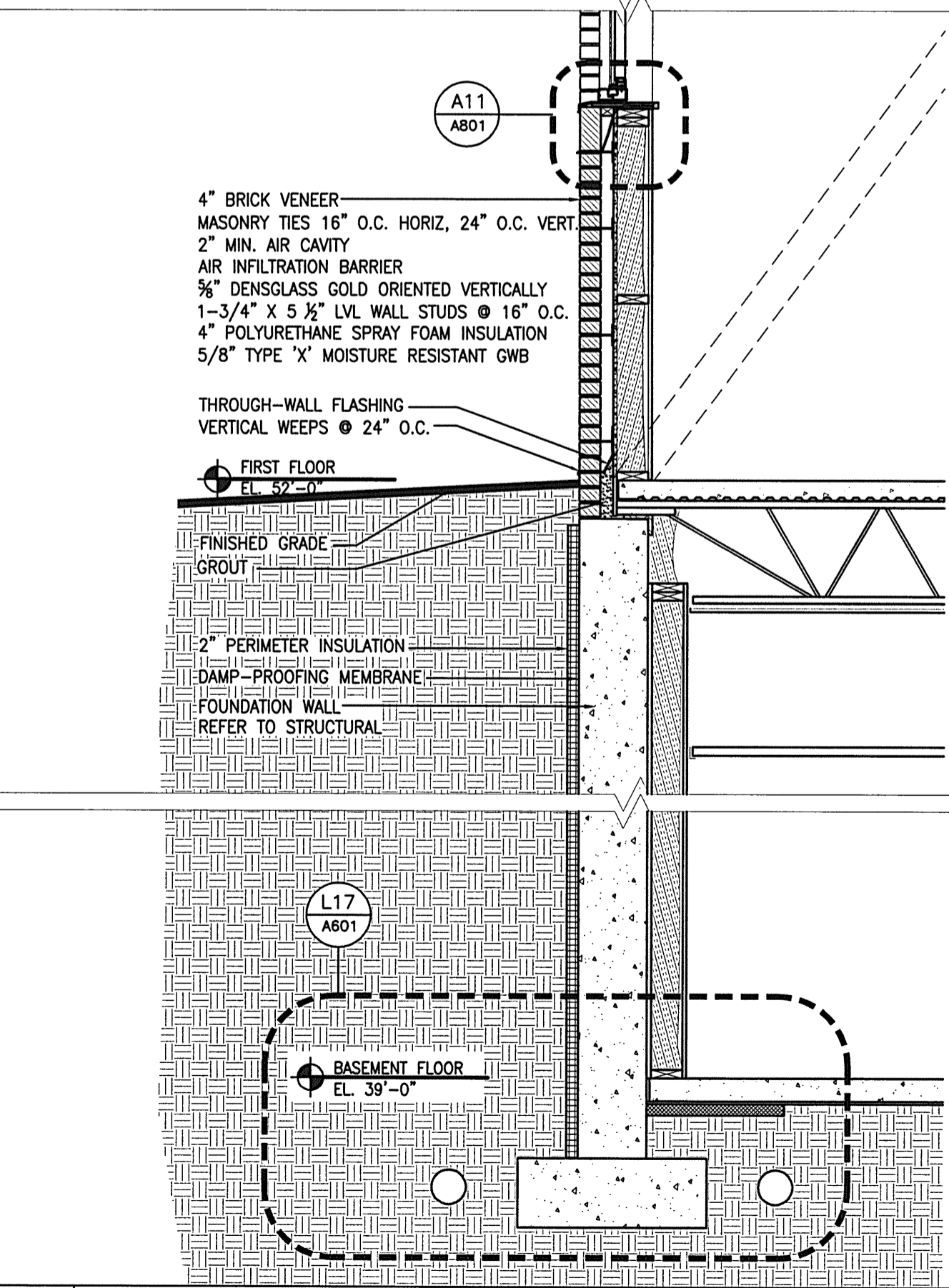
**WALL ASSEMBLY R-VALUE**  
**2ND & 3RD FLOORS**

|                                      |              |
|--------------------------------------|--------------|
| OUTSIDE AIR FILM @ WALL              | 0.17         |
| SIDING- CEMENTITIOUS                 | 0.89         |
| AIR BARRIER MEMBRANE                 | 0.06         |
| 5/8" DENSGLASS                       | 0.67         |
| SPRAY FOAM INSULATION- 5 1/2"        | 37.00        |
| INSIDE AIR FILM @ WALL*              | 0.68         |
| 5/8" DRYWALL                         | 0.56         |
| <b>TOTAL WALL ASSEMBLY R-VALUE =</b> | <b>39.94</b> |

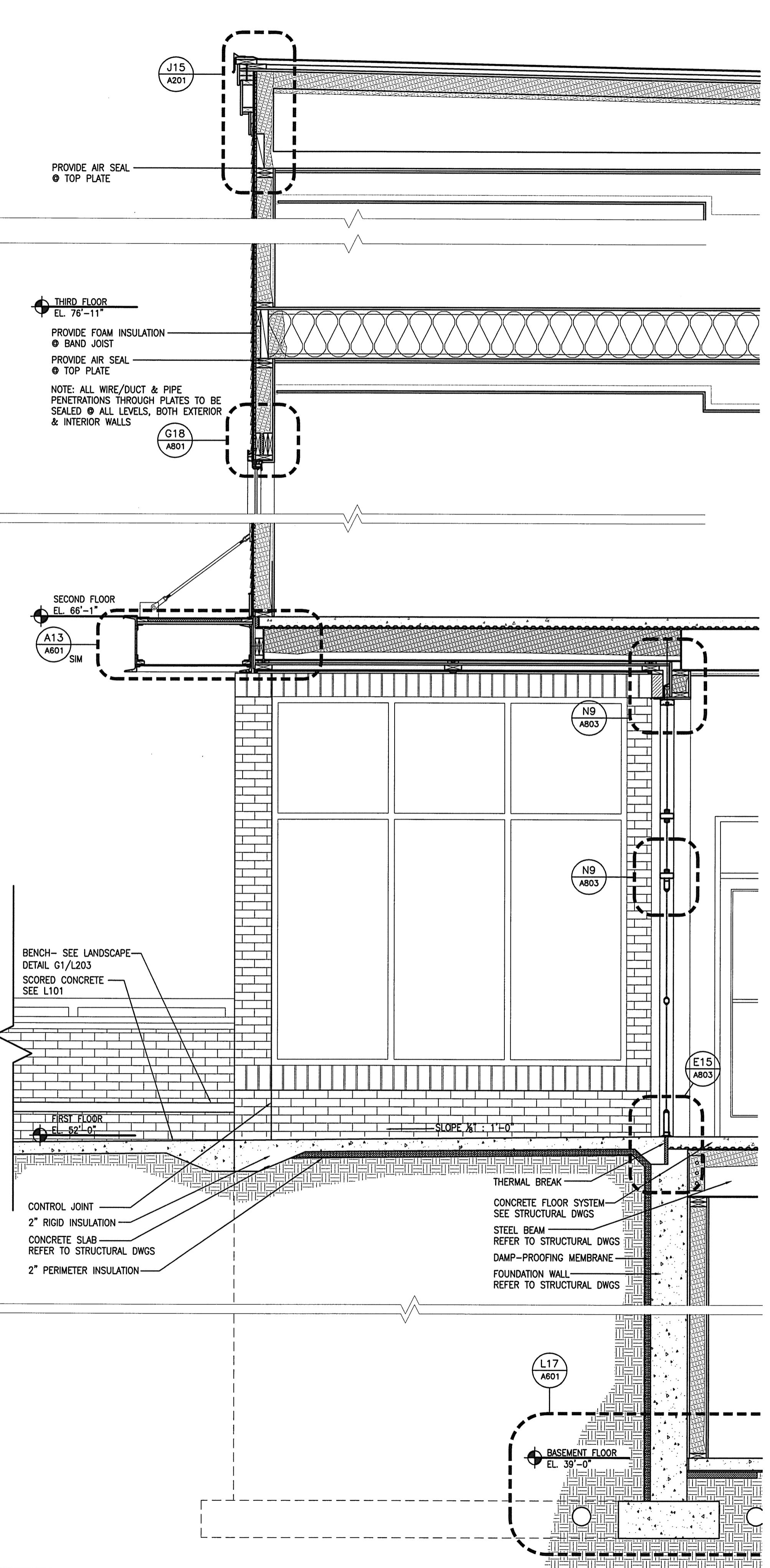


**WALL ASSEMBLY R-VALUE @ BRICK**

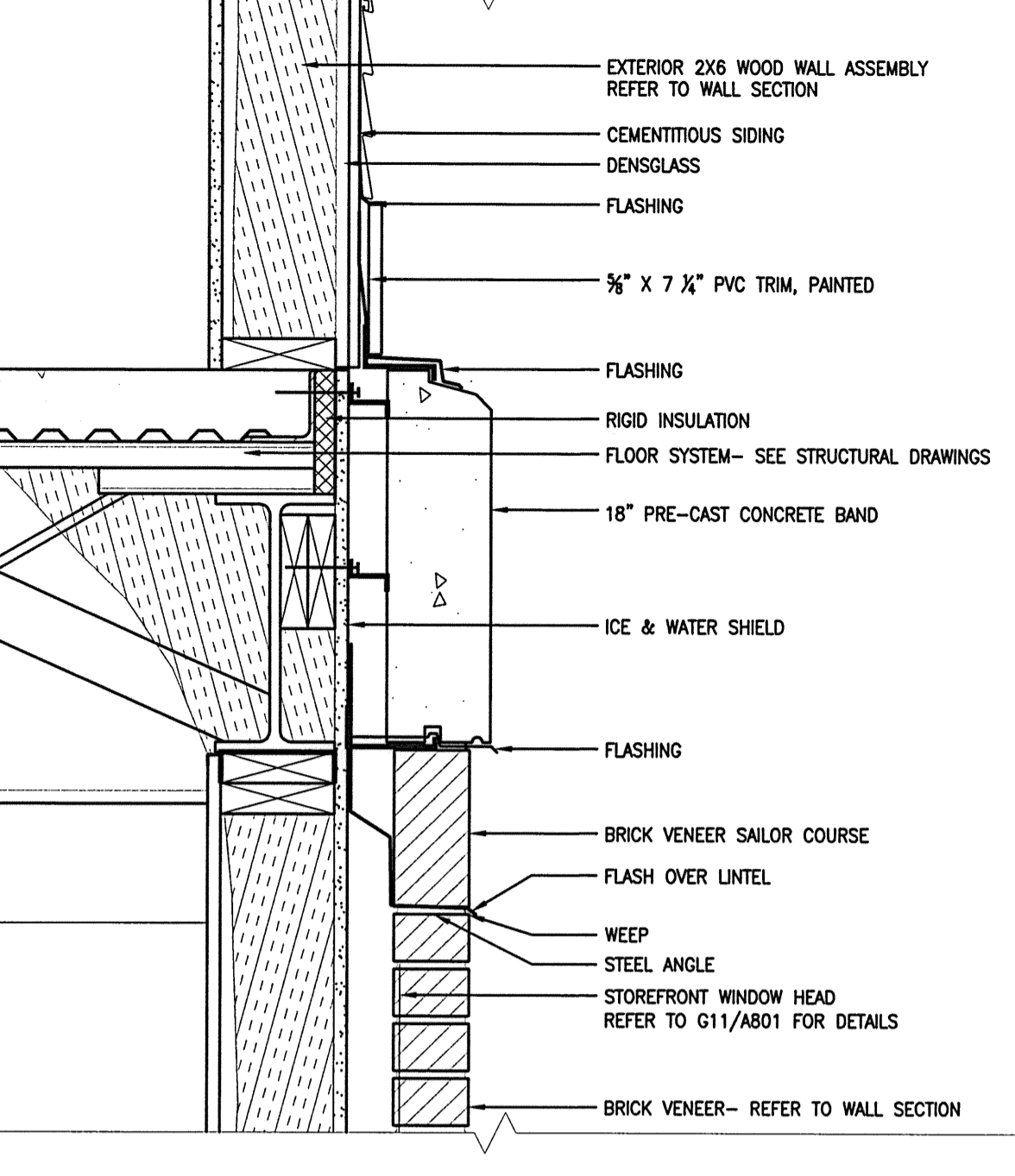
|                                      |              |
|--------------------------------------|--------------|
| OUTSIDE AIR FILM @ WALL              | 0.17         |
| BRICK 4"                             | 0.44         |
| AIR CAVITY                           | 1.00         |
| AIR BARRIER MEMBRANE                 | 0.06         |
| 5/8" DENSGLASS                       | 0.67         |
| SPRAY FOAM INSULATION- 4"            | 24.00        |
| INSIDE AIR FILM @ WALL               | 0.68         |
| 5/8" DRYWALL                         | 0.56         |
| <b>TOTAL WALL ASSEMBLY R-VALUE =</b> | <b>27.58</b> |



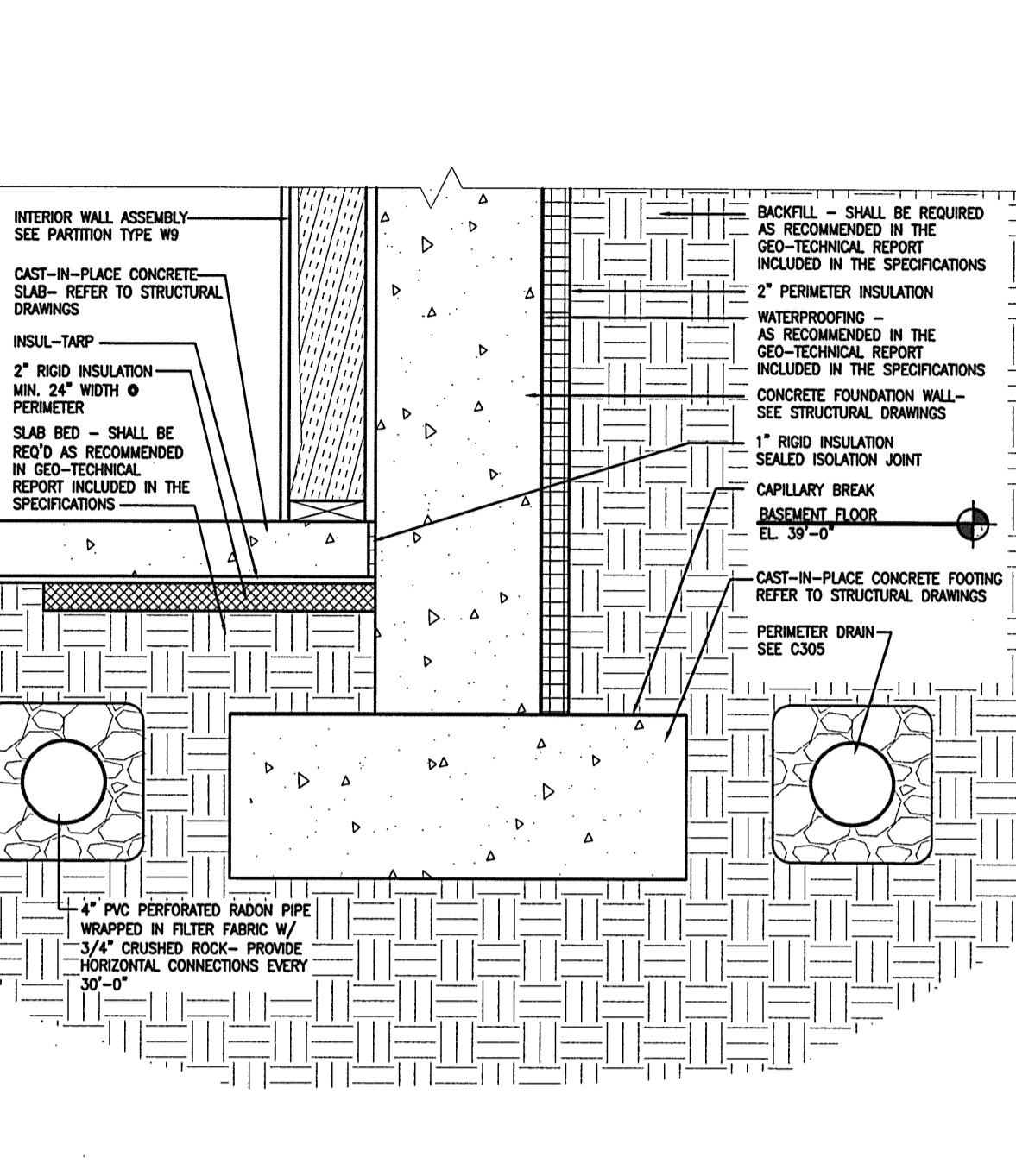
**A1 WALL SECTION**  
 1/2" = 1'-0"



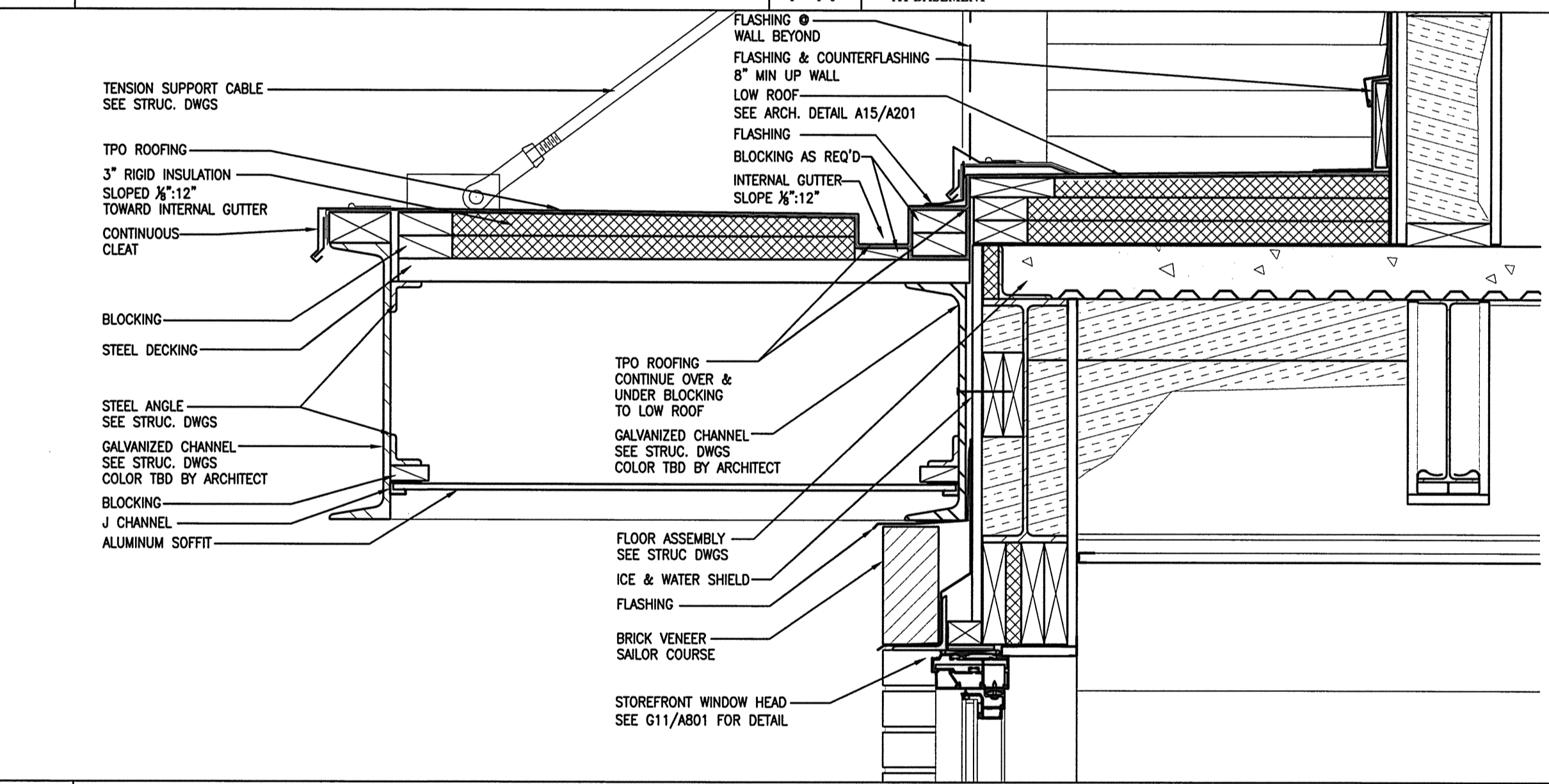
**A6 WALL SECTION**  
 1/2" = 1'-0"  
 @ MAIN ENTRY



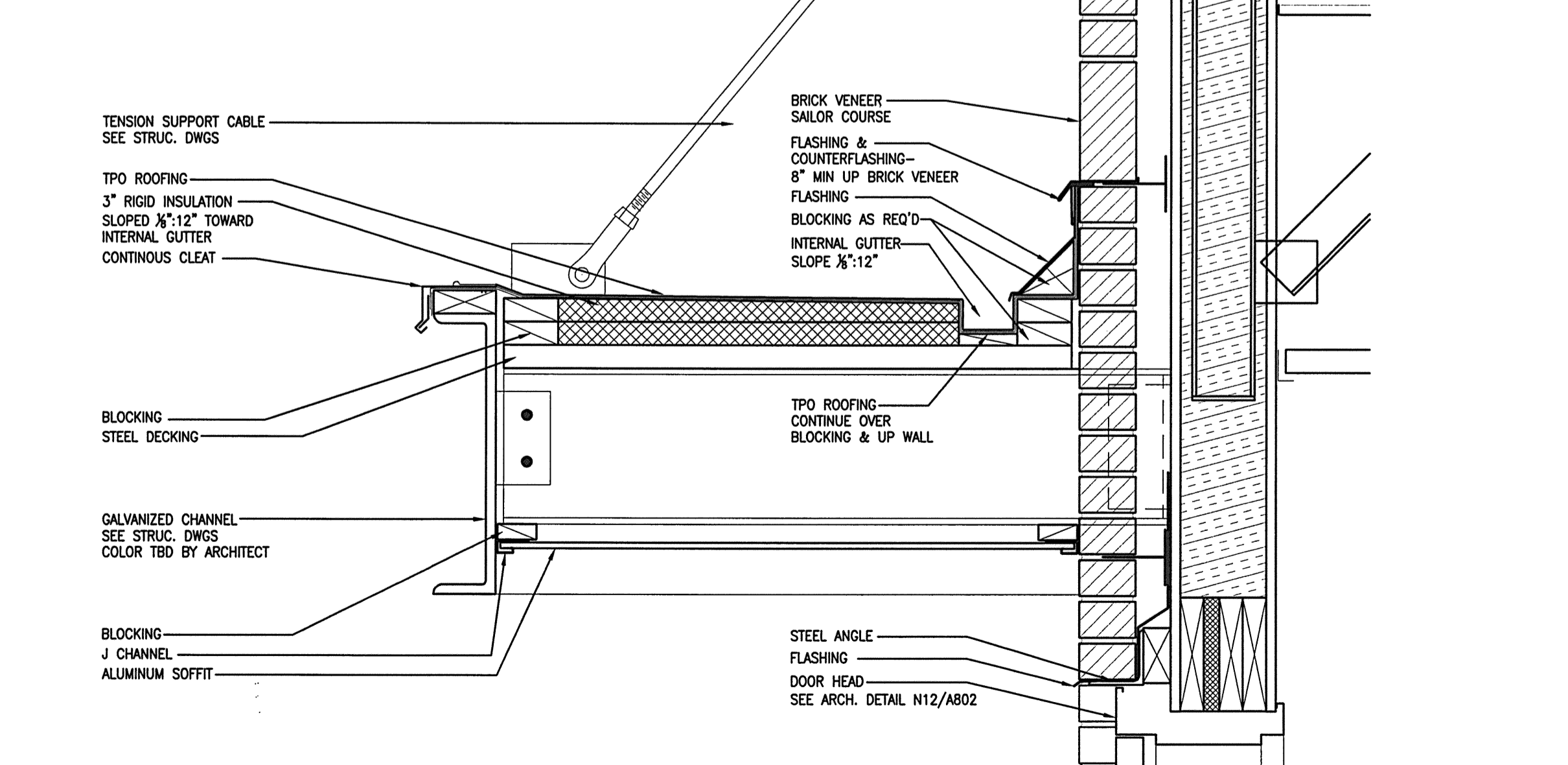
**L13 PRE-CAST CONCRETE BAND DETAIL**  
 1/2" = 1'-0"



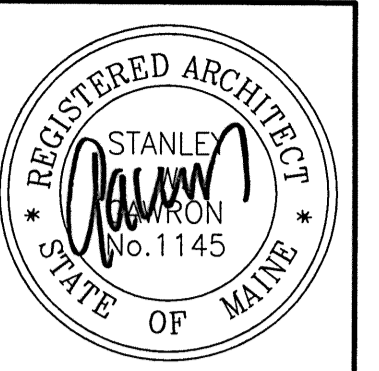
**L17 TYPICAL FOUNDATION DETAIL**  
 1" = 1'-0"  
 AT BASEMENT



**F13 STEEL CANOPY DETAIL SECTION @ LOW ROOF**  
 1/2" = 1'-0"  
 REFER TO STRUCTURAL DETAIL 4/S3.1



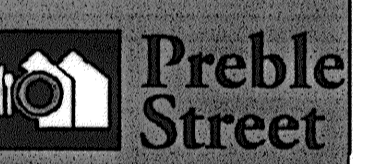
**A13 STEEL CANOPY DETAIL SECTION**  
 1/2" = 1'-0"  
 REFER TO STRUCTURAL DETAIL 2/S3.1



**Gawron Turgeon ARCHITECTS**  
 29 Black Point Road  
 Scarborough, Maine 04074  
 www.gawronturgeon.com  
 207-883-6307 fax 207-883-0361 for



**FLORENCE HOUSE**  
 190 VALLEY STREET  
 PORTLAND, MAINE



**REVISIONS**

| #  | DATE     | DESCRIPTION                      |
|----|----------|----------------------------------|
| 1  | 4.03.07  | CONTRACT ZONE SUBMISSION         |
| 2  | 5.01.07  | CONTRACT ZONE SUBMISSION         |
| 3  | 7.10.07  | CONTRACT ZONE SUBMISSION         |
| 4  | 9.04.07  | SITE PLAN AND SUBDIVISION REVIEW |
| 5  | 10.02.07 | FINAL SITE PLAN REVIEW           |
| 6  | 11.15.07 | 50% REVIEW SET                   |
| 7  | 12.04.07 | 50% MAINE HOUSING REVIEW SET     |
| 8  | 05.02.08 | 90% MAINE HOUSING REVIEW SET     |
| 9  | 07.31.08 | 100% MAINE HOUSING REVIEW SET    |
| 10 | 09.02.08 | 100% BID DOCUMENTS               |

|               |          |
|---------------|----------|
| DATE          | 09/02/08 |
| PROJECT #     | 100405   |
| DRAWN BY:     | AEP      |
| CHECKED BY:   | RLD      |
| DRAWING SCALE | VARIES   |

**SHEET TITLE**  
 WALL SECTIONS & ARCHITECTURAL DETAILS

**A601**

© COPYRIGHT 1985-2008  
 REPRODUCTION OR USE OF THIS DOCUMENT WITHOUT WRITTEN PERMISSION OF GAWRON TURGEON ARCHITECTS IS PROHIBITED.