

Gawron Turgeon ARCHITECTS
 29 Black Point Road
 Scarborough, Maine 04074
 www.gawronturgeon.com
 207-883-6307 tel. 207-883-0361 fax



FLORENCE HOUSE
 190 VALLEY STREET
 PORTLAND, MAINE



REVISIONS		
#	DATE	DESCRIPTION
1	4.03.07	CONTRACT ZONE SUBMISSION
2	5.01.07	CONTRACT ZONE SUBMISSION
3	7.10.07	CONTRACT ZONE SUBMISSION
4	9.04.07	SITE PLAN AND SUBDIVISION REVIEW
5	10.02.07	FINAL SITE PLAN REVIEW
6	11.15.07	50% REVIEW SET
7	12.04.07	50% MAINE HOUSING REVIEW SET
8	05.02.08	95% MAINE HOUSING REVIEW SET
9	07.31.08	100% MAINE HOUSING REVIEW SET
10	09.02.08	100% BID DOCUMENTS

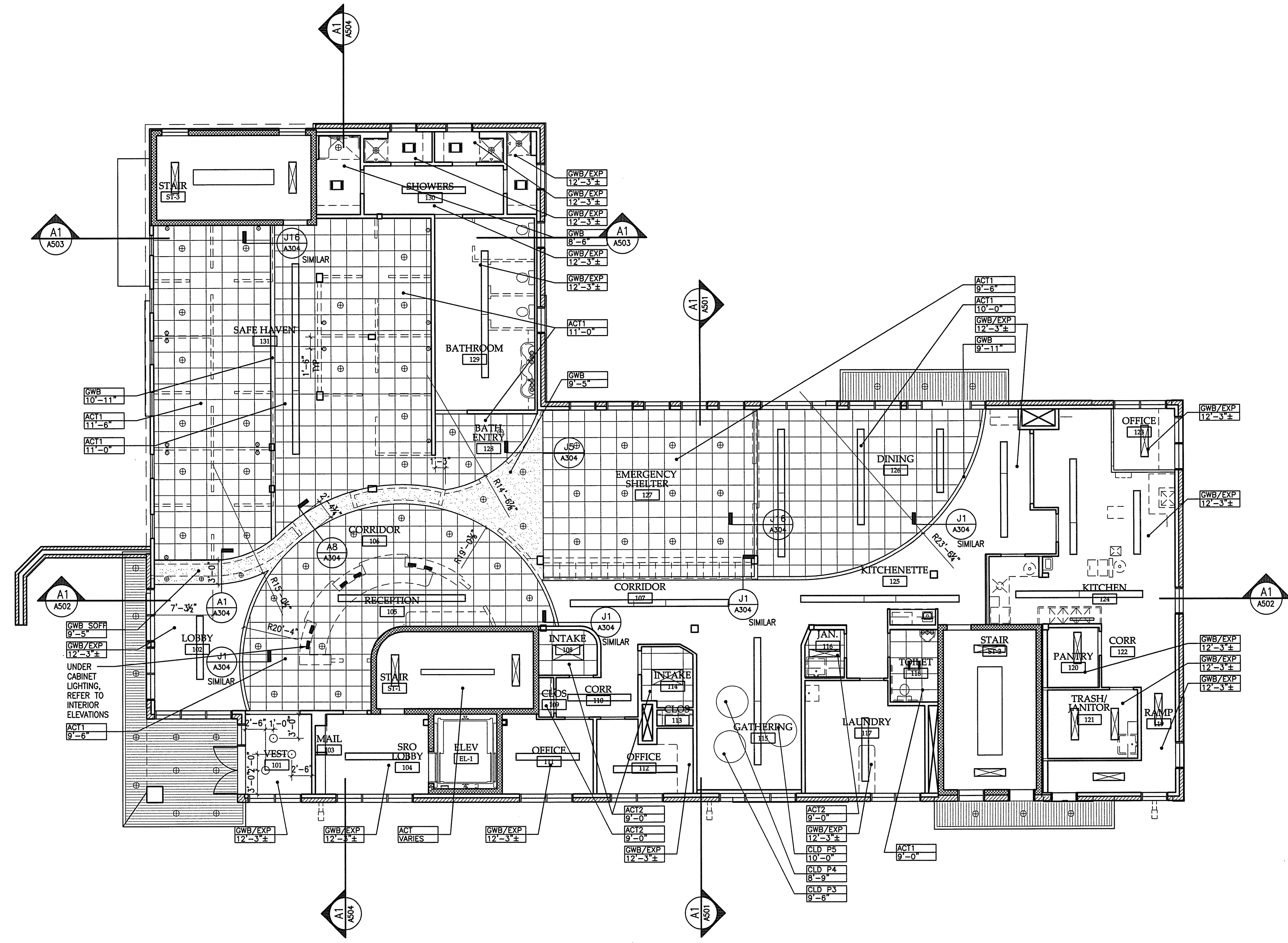
DATE	09/02/08
PROJECT #	100405
DRAWN BY:	RLA
CHECKED BY:	MET
DRAWING SCALE	1/8"=1'-0"

SHEET TITLE

FIRST FLOOR REFLECTED CEILING PLAN

A 301

© COPYRIGHT 1985-2008
 REPRODUCTION OR USE OF THIS DOCUMENT WITHOUT WRITTEN PERMISSION OF GAWRON TURGEON ARCHITECTS IS PROHIBITED



LIGHTING LEGEND

- 2x4
- 1x4
- LINEAR PENDANT
- DOWNLIGHT
- UNDER CABINET STRIP, REFER TO INTERIOR ELEVATION
- WALL SCONCE
- DECORATIVE VANITY LIGHT BAR
- DECORATIVE CLOSE-TO-CEILING
- FAN/ LIGHT UNIT
- DECORATIVE LARGE PENDANT

NOTES:

1. INTERIOR FIXTURE LEGEND FOR DESIGN INTENT ONLY. REFER TO ELECTRICAL DRAWINGS FOR LIGHT FIXTURE TYPES AND CIRCUITING. ELECTRICAL ENGINEER TO VERIFY PHOTOMETRIC LEVELS MEET CODE IN ALL OF THE ROOMS. COORDINATE DISCREPANCIES WITH ARCHITECT PRIOR TO INSTALLATION.
2. MECHANICAL SUBCONTRACTOR TO VERIFY SIZE AND LOCATION OF ANY MECHANICAL REGISTERS WITH ARCHITECT PRIOR TO CONSTRUCTION. LIGHTING LOCATIONS SHALL TAKE PRECEDENCE.
3. ALL PENETRATIONS IN RATED FLOORS/CEILING ASSEMBLIES SHALL BE FIRE STOPPED AND DRAFT STOPPED APPROPRIATE TO RATINGS.

A1 FIRST FLOOR REFLECTED CEILING PLAN

A18 LEGEND
 NA REFLECTED CEILING PLAN