

**Gawron Turgeon ARCHITECTS**  
 29 Black Point Road  
 Scarborough, Maine 04074  
 www.gawronturgeon.com  
 207-883-6307 ext. 207-883-0361 fax



**FLORENCE HOUSE**  
 190 VALLEY STREET  
 PORTLAND, MAINE



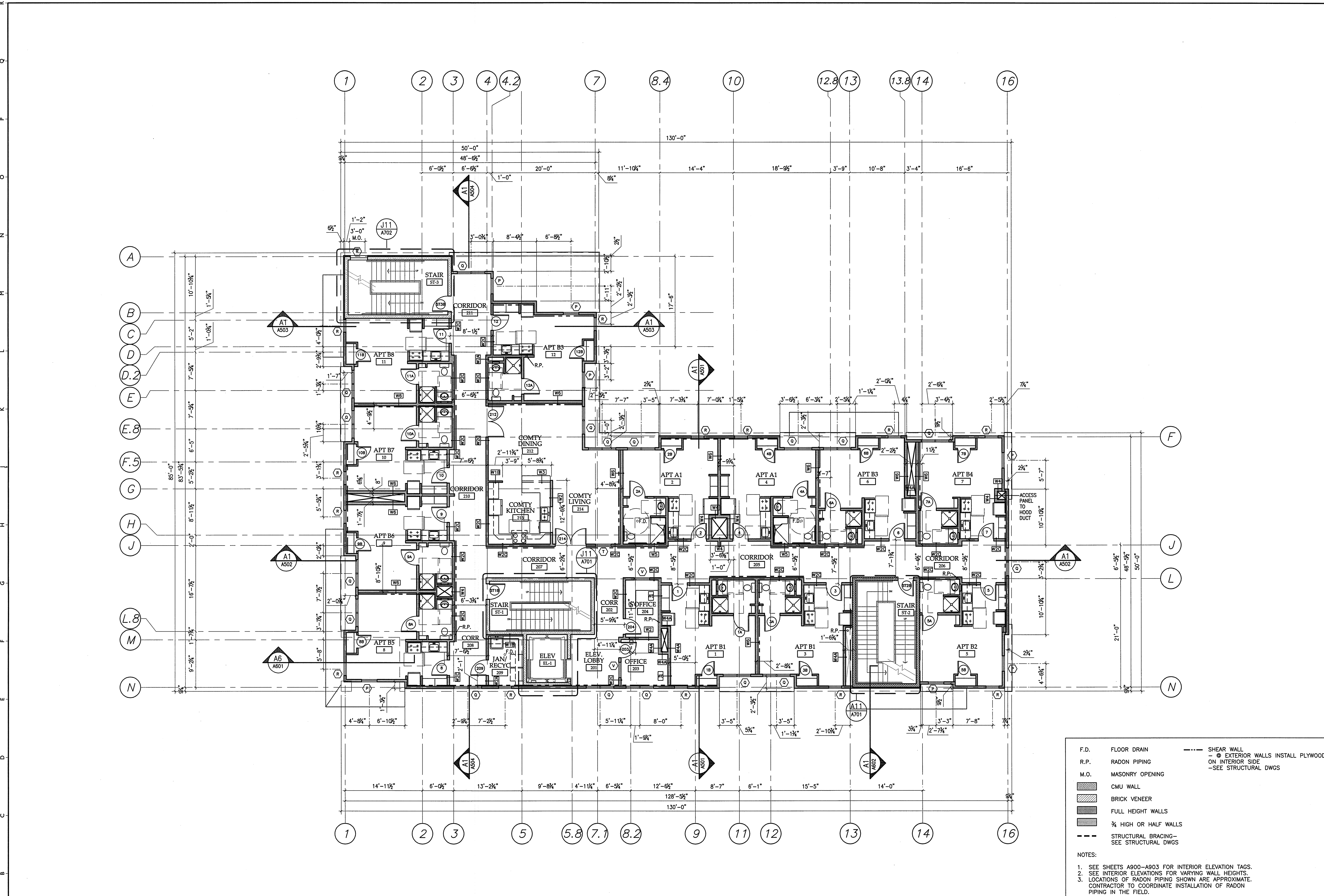
REVISIONS		
#	DATE	DESCRIPTION
1	4.03.07	CONTRACT ZONE SUBMISSION
2	5.01.07	CONTRACT ZONE SUBMISSION
3	7.10.07	CONTRACT ZONE SUBMISSION
4	9.04.07	SITE PLAN AND SUBMISSION REVIEW
5	10.02.07	FINAL SITE PLAN REVIEW
6	11.15.07	50% REVIEW SET
7	12.04.07	50% MAINE HOUSING REVIEW SET
8	05.02.08	90% MAINE HOUSING REVIEW SET
9	07.31.08	100% MAINE HOUSING REVIEW SET
10	09.02.08	100% BID DOCUMENTS

DATE	09/02/08
PROJECT #	100405
DRAWN BY:	AEP
CHECKED BY:	RLD
DRAWING SCALE	1/8"=1'-0"

**SHEET TITLE**  
 SECOND FLOOR PLAN

**A 102**

© COPYRIGHT 1985-2008  
 REPRODUCTION OR USE OF THIS DOCUMENT WITHOUT WRITTEN PERMISSION OF GAWRON TURGEON ARCHITECTS IS PROHIBITED



F.D.	FLOOR DRAIN	--- SHEAR WALL
R.P.	RADON PIPING	● EXTERIOR WALLS INSTALL PLYWOOD ON INTERIOR SIDE -SEE STRUCTURAL DWGS
M.O.	MASONRY OPENING	
[Pattern]	CMU WALL	
[Pattern]	BRICK VENEER	
[Pattern]	FULL HEIGHT WALLS	
[Pattern]	¾ HIGH OR HALF WALLS	
[Pattern]	STRUCTURAL BRACING-SEE STRUCTURAL DWGS	

NOTES:  
 1. SEE SHEETS A900-A903 FOR INTERIOR ELEVATION TAGS.  
 2. SEE INTERIOR ELEVATIONS FOR VARYING WALL HEIGHTS.  
 3. LOCATIONS OF RADON PIPING SHOWN ARE APPROXIMATE. CONTRACTOR TO COORDINATE INSTALLATION OF RADON PIPING IN THE FIELD.

**A1 SECOND FLOOR PLAN**  
 1/8"=1'-0" 7,561 SF

**A17 LEGEND**

