

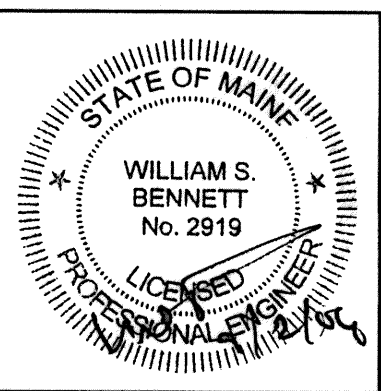
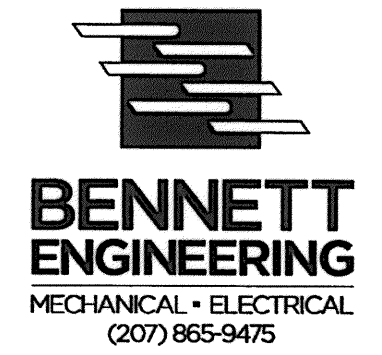
LIGHTING FIXTURE SCHEDULE

TYPE	DESCRIPTION	LAMPS	REMARKS
A	LIGHTOLIER *EG1-3-H-32-P-4-1-W-E	(3) F32T8/SPX35	4' LINEAR FLUORESCENT - LOUVERED - SUSPENDED FROM AIRCRAFT CABLE - DIMMING BALLAST - EMERGENCY BATTERY PACK
A1	LIGHTOLIER *EG1-3-H-32-P-8-1-W-E	(6) F32T8/SPX35	8' LINEAR FLUORESCENT - LOUVERED - SUSPENDED FROM AIRCRAFT CABLE - DIMMING BALLAST - EMERGENCY BATTERY PACK
A2	LIGHTOLIER *EG1-3-H-32-P-1-1-W-E	(9) F32T8/SPX35	12' LINEAR FLUORESCENT - LOUVERED - SUSPENDED FROM AIRCRAFT CABLE - DIMMING BALLAST - EMERGENCY BATTERY PACK
B	MINKA-LAVERY *MIN-505-84-PL	(1) 13W G24q-1, 4-PIN	WALL SCENCE - FLUORESCENT
C	PRESCOLITE *IBX26ICATDM, TW61WBF	(1) 26W TRIPLE TUBE CF, 4-PIN	RECESSED FLUORESCENT WALL WASHER
D	LIGHTOLIER *CT2G332-120-HI-GLR - C6 Ballast	(3) F32T8/SPX35	2'x4' DIRECT/INDIRECT - RECESSED FLUORESCENT - (1) 2 LAMP AND (1) 1 LAMP ELECTRONIC BALLAST
E	DUAL-LITE *LX-U-R-W-E	LED'S FURNISHED W/ UNIT	SINGLE/DOUBLE FACE, END/CEILING/WALL MOUNT
F	LIGHTOLIER *SPS2GFSVA332-UNV-H3-GLR - C6 ballast	(3) F32T8/SPX35	2'x4' LENSED TROFFER- RECESSED FLUORESCENT - (1) 3 LAMP ELECTRONIC BALLAST
G	LIGHTOLIER *CBS232-UNV-HI-GLR c5 ballast	(2) F32T8/SPX35	4' SURFACE MOUNTED WRAPAROUND - (1) 2 LAMP ELECTRONIC BALLAST
H	LIGHTOLIER *1126, 1100FT	(1) 26W TRIPLE TUBE CF	6 3/4" RECESSED FLUORESCENT LENSED DOWNLIGHT - FRESNEL LENS
J	PRESCOLITE *IBX26ICATDM, T060C	(1) 26W CF	6" RECESSED FLUORESCENT OPEN DOWNLIGHT - WITH DIMMING BALLAST
K	PROGRESS*P83-26ICAT W/P8062-28	(1) 26 CF	6" RECESSED DOWNLIGHT - canopy light
L	NOT USED		
M	LIGHTOLIER *JS8A232-UNV-HI-GLR-ASC24 CSP C5 ballast	(2) F32T8/SPX35	4' SURFACE MOUNTED WRAPAROUND - DAMP LOCATION - (1) 2 LAMP ELECTRONIC BALLAST - WITH STEM AND CANOPY SET
N	LIGHT CONCEPTS *11530-BN-SEMI-FLUSH	(1) 55W 2C T6	SEMI-FLUSH MOUNT IN UNIT
P	LIGHTOLIER *1178SH-1100FT	(1) 26W CF TRIPLE TUBE	6 3/4" ROUND RECESSED SHOWER LIGHT
Q	LIGHT CONCEPTS *11532-BN	(2) 13W FULL SPIRAL 4-PIN CF	VANITY LIGHT - UNITS
R	PROGRESS* P5882-30EB	(1) 13W CF	ELEVATOR PIT LIGHT
S	LIGHTOLIER *SW4S232HPF-120-HI-GLR-NSYMF48S CSP	(2) F32T8/SPX35	4' INDUSTRIAL
T	SEAGULL *4975-15	(1) 8W T5	12 1/4" LONG UNDERCABINET LIGHT - PROVIDE WITH ROCKER SWITCH
U	MINKA-LAVERY *MIN-61-84-PL	(2) 32W FC8 T9 G10qCF	DECORATIVE PENDANT @ VESTIBULE
V	LIGHTOLIER *ST4WA232-120-HI c5 ballast	(2) F32T8/SPX35	4' ENCLOSED INDUSTRIAL - WET LOCATION
V1	LIGHTOLIER *ST8WA232-120-HI c7 ballast	(4) F32T8/SPX35	8' ENCLOSED INDUSTRIAL - WET LOCATION
W	LIGHT CONCEPTS *10842RET5	(2) 14W LINEAR T5	VANITY LIGHT - TOILET 012 & 118
W1	LIGHT CONCEPTS *10844RET5	(2) 28W LINEAR T5	VANITY LIGHT - SALON 023 & BATHROOM 129
X	NUTONE *QTXEN150FLT	F42TBX/835/A/ECO	FAN/LIGHT

All Lighting fixtures shall be energy star rated or have High performance T8 ballast and lamps to meet Efficiency maine criteria.

SYMBOL LEGEND

- POWER PANEL, 120/208V, 3PHS, 4WIRE
- TP — LOAD CENTER, 120/208V, 1PHS, 3WIRE
- Ⓜ ELECTRIC MOTOR DRIVEN EQUIPMENT, HP SHOWN
- SM MANUAL MOTOR STARTER SWITCH WITH THERMAL OVERLOAD DEVICE, MOUNTED AT UNIT
- Ⓜ JUNCTION BOX - "H" DENOTES RANGE HOOD, "DS" DENOTES DISPOSAL, "DW" DENOTES DISHWASHER
- A } LIGHTING FIXTURES- CAPITAL LETTERS DENOTE TYPE AS PER LIGHTING FIXTURE SCHEDULE. LOWER CASE LETTERS INDICATE SWITCH CONTROL. DIAGONAL LINE INDICATES NIGHT LIGHT - UNSWITCHED
- D-O } DISCONNECT SWITCH - 250 VOLT- SIZE AND NUMBER OF POLES AS INDICATED ON DRAWING PROVIDED AND INSTALLED BY E.C. - UNLESS OTHERWISE NOTED.
- F } COMBINATION MOTOR STARTER/ DISCONNECT SWITCH - WITH AUXILIARY CONTACTS AND HAND-OFF-AUTO SWITCH AND RED RUN LIGHT PROVIDED AND INSTALLED BY E.C. - UNLESS OTHERWISE NOTED.
- VFD } VARIABLE FREQUENCY DRIVE - PROVIDED BY M.C., INSTALLED AND WIRED BY E.C.
- RACEWAY & WIRING OR MC CABLE RUN CONCEALED IN WALLS/CEILING.
- - - RACEWAY & WIRING RUN EXPOSED
- RACEWAY & WIRING RUN CONCEALED UNDER FLOOR
- HP 1 3 } HOME RUN TO PANEL- ARROWS INDICATE QUANTITY OF CIRCUITS- NUMERALS DENOTE CIRCUIT NUMBERS
- S SINGLE POLE SWITCH, 120 VOLT, 20 AMP, SPEC GRADE, GROUNDING TYPE, MOUNT 48" AFF, 3-3-WAY, 4-4-WAY, P-PILOT LOWER CASE LETTER INDICATES FIXTURE OR CONTROLLED LOAD. PILOT LIGHT SWITCHES SHALL BE PROVIDED W/ ENGRAVED NAMEPLATE IDENTIFYING USE.
- S<sub>B</sub> BURNER SAFETY SWITCH - PROVIDE WITH RED PLATE - MOUNTED 72" AFF
- SELF CONTAINED EMERGENCY LIGHTING UNIT W/ 2 HEADS DUAL-LITE \*L22 - 10 WATTS FOR 90 MINUTES, 6V D.C.
- E EXIT LIGHT FIXTURE - UNSWITCHED - SEE LIGHTING FIXTURE SCHEDULE
- TOP TEMPERATURE CONTROL PANEL - PROVIDED BY M.C. WIRED BY E.C.
- D DUPLEX RECEPTACLE- 20A, 125V SPEC GRADE GROUNDING TYPE, TAMPER PROOF AND MATCHING PLATE - MOUNT 18" AFF. "R" DENOTES REFRIGERATOR, "D" DENOTES DOUBLE DUPLEX
- DUPLEX RECEPTACLE- 20A, 125V SPEC GRADE GROUNDING TYPE, TAMPER PROOF AND MATCHING PLATE - MOUNT 18" AFF. BOTTOM RECEPTACLE SWITCHED
- GF DUPLEX RECEPTACLE- GROUND FAULT OUTLET 20A, 125V- TAMPER PROOF WITH MATCHING PLATE FURNISHED W/ OUTLET. FLUSH MOUNTED 45" AFF EXCEPT AS NOTED.
- FL DUPLEX RECEPTACLE- 15A, 125V SPEC. GRADE GROUNDING TYPE - FLUSH FLOOR MOUNTED.
- RO RANGE OUTLET 50 AMP, 250 VOLT, GROUNDING TYPE FLUSH MOUNTED 18" AFF
- DO DRYER OUTLET 30 AMP, 250 VOLT, GROUNDING TYPE FLUSH MOUNTED 18" AFF
- FACP FIRE ALARM CONTROL PANEL
- 30 MH FIRE ALARM AUDIO/VISUAL MOUNT 6'-8" AFF - NUMERAL DENOTES CANDELA RATING "MH" DENOTES MINHORN
- 15 SD FIRE ALARM VISUAL STROBE ONLY - FLUSH MOUNT 6'-8" AFF NUMERALS DENOTE CANDELA RATINGS.
- 135° 200° SYSTEM CONNECTED FIXED TEMPERATURE HEAT DETECTOR
- ER SMOKE DETECTOR, PHOTOELECTRIC TYPE- SYSTEM CONNECTED. "ER" - ELEV. RECALL
- SB SYSTEM CONNECTED SMOKE DETECTOR, PHOTOELECTRIC TYPE- W/ SOUNDER BASE- "SB" DENOTES SOUNDER BASE.
- SD DUCT SMOKE DETECTOR & TEST STATION
- F FIRE ALARM PULL STATION - MOUNT 48" AFF
- CTV CABLE TV JUNCTION BOX "CTV" - SIZE AS REQUIRED BY CABLE TV CO.
- TV TV OUTLET LOCATION - CABLE AND JACKS BY E.C.
- FL FLOOR MOUNTED TELEPHONE/DATA DUAL JACK LOCATION MOUNT 18" AFF - TWO CAT 5E CABLES BACK TO TBB.
- TELEPHONE/DATA DUAL JACK LOCATION MOUNT 18" AFF - TWO CAT 5E CABLES BACK TO TBB.
- TELEPHONE JACK LOCATION MOUNT 18" AFF - ONE CAT 5E CABLE BACK TO TBB.
- PC PHOTOCELL
- LC LIGHTING CONTACTOR
- TC TIMECLOCK
- PUSHBUTTON FOR ELECTRICALLY OPERATED DOOR - FURN. W/ DOOR OPERATOR - WIRED BY E.C.
- CH DOOR CHIME
- DOOR PUSHBUTTON
- WP WEATHERPROOF
- IP INTERCOM PANEL IN UNIT
- DOOR ELECTRIC STRIKE
- IC INTERCOM PANEL AT RECEPTION
- EXTERIOR SECURITY CAMERA - WIRING PER MANUFACTURER
- SPRINKLER SYSTEM FLOW SWITCH
- SPRINKLER SYSTEM TAMPER SWITCH
- MOTION SENSOR (WATTSTOPPER OR EQUAL)
- CORRIDORS: WT-2255 SENSOR & B120E-P POWER PACK
- OTHER COMMON SPACES: WT-605 SENSOR & B120E-P POWER PACK



**FLORENCE HOUSE**  
 190 VALLEY STREET  
 PORTLAND, MAINE

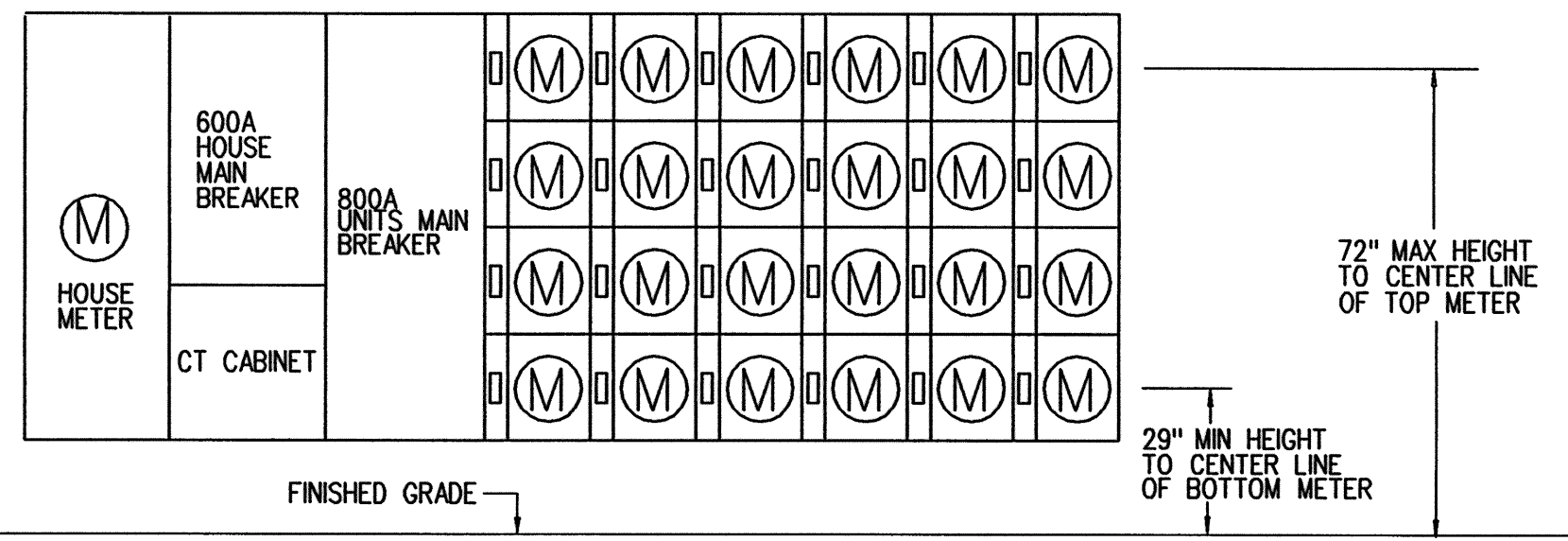
#	DATE	DESCRIPTION
1	4.03.07	CONTRACT ZONE SUBMISSION
2	5.01.07	CONTRACT ZONE SUBMISSION
3	7.10.07	CONTRACT ZONE SUBMISSION
4	9.04.07	SITE PLAN AND SUBDIVISION REVIEW
5	10.02.07	FINAL SITE PLAN
6	11.15.07	50% REVIEW SET
7	12.04.07	50% MAINE HOUSING REVIEW SET
8	05.02.08	80% MAINE HOUSING REVIEW SET
9	07.31.08	100% MAINE HOUSING REVIEW SET
10	09.02.08	100% BID DOCUMENTS

DATE:	09/02/08
PROJECT #	100405
DRAWN BY:	SPD
CHECKED BY:	WSBR
DRAWING SCALE	AS NOTED

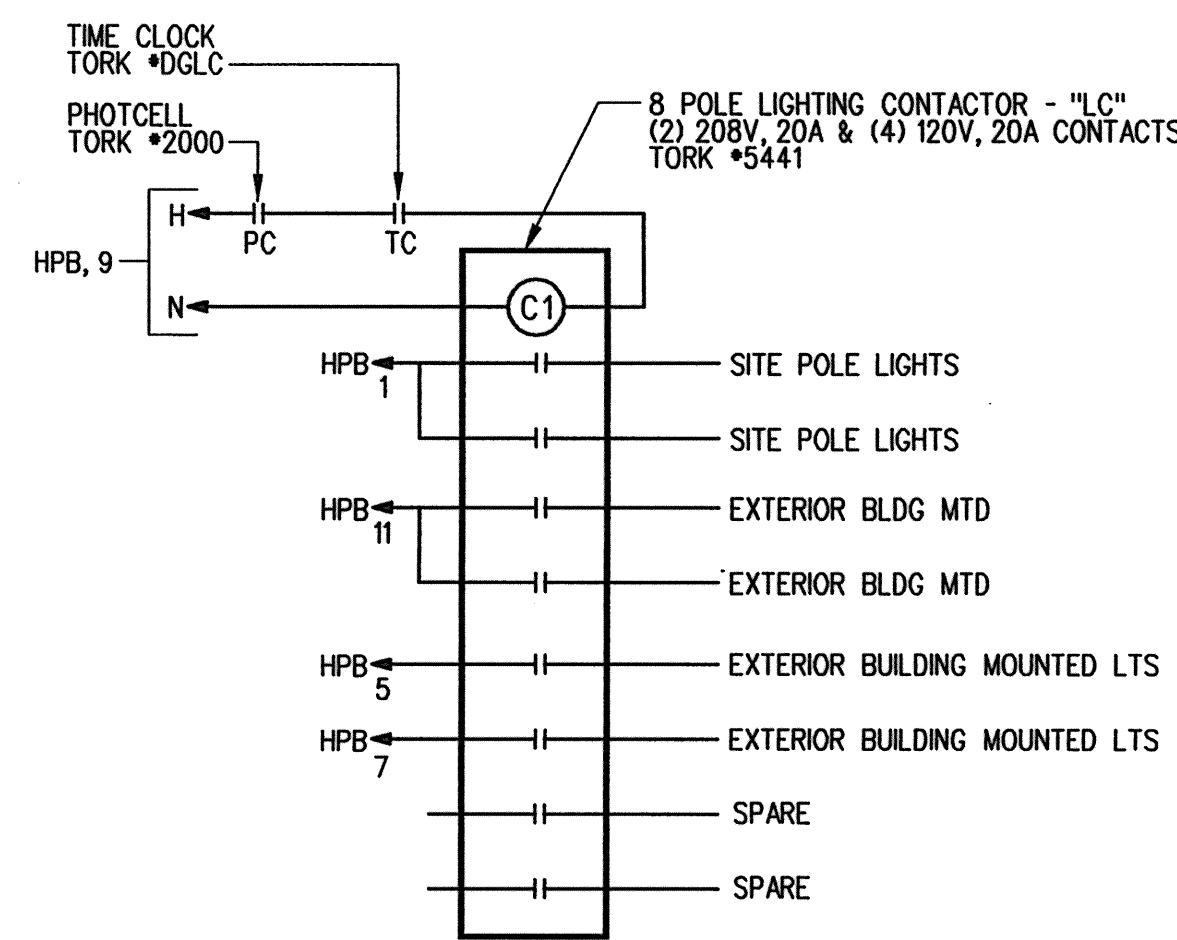
SHEET TITLE  
ELECTRICAL DETAILS, LEGEND AND SCHEDULES

**E 500**

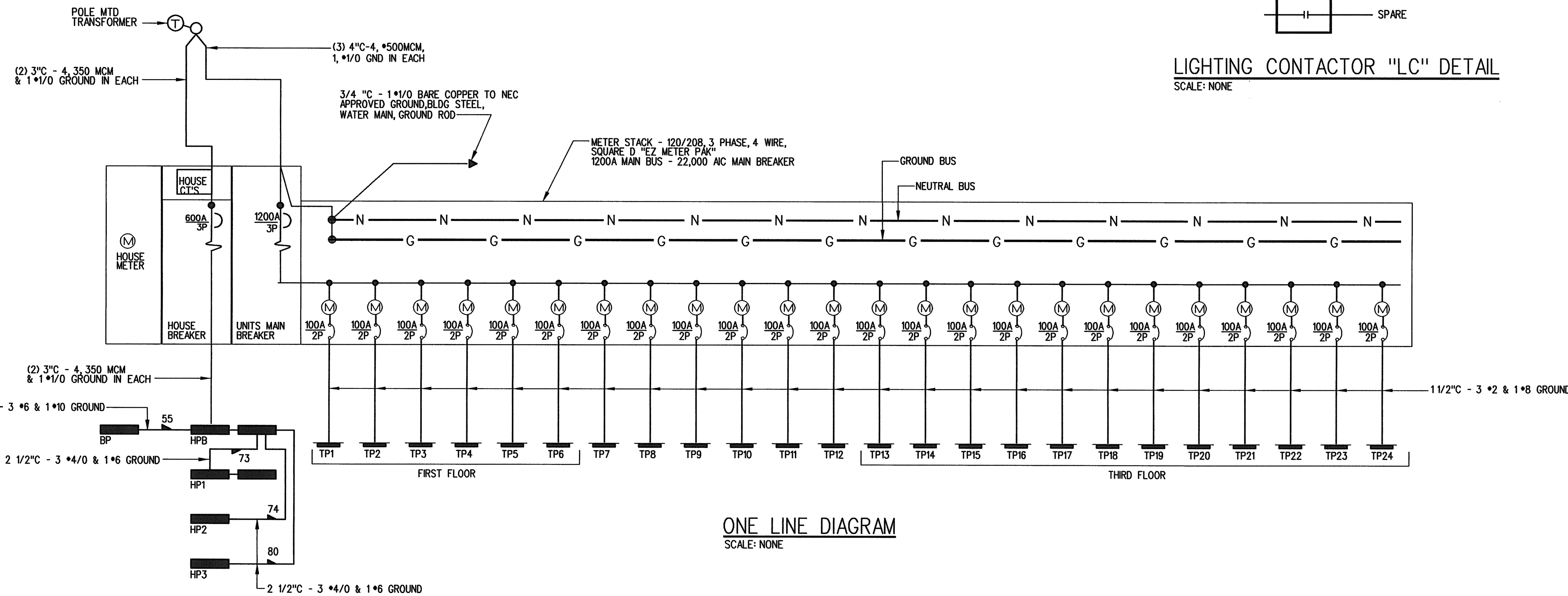
© COPYRIGHT 1985-2008  
REPRODUCTION OR USE OF THIS DOCUMENT WITHOUT WRITTEN PERMISSION OF GAWRON TURGEON ARCHITECTS IS PROHIBITED



METER STACK ELEVATION - (24 METERS)  
SCALE: NONE



LIGHTING CONTACTOR "LC" DETAIL  
SCALE: NONE



ONE LINE DIAGRAM  
SCALE: NONE