

STORMTECH PRODUCT SPECIFICATIONS

- 1.0 GENERAL**
- 1.1 STORMTECH CHAMBERS ARE DESIGNED TO CONTROL STORMWATER RUNOFF. AS A SUBSURFACE RETENTION SYSTEM, STORMTECH CHAMBERS RETAIN AND ALLOW EFFECTIVE INFILTRATION OF WATER INTO THE SOIL. AS A SUBSURFACE DETENTION SYSTEM, STORMTECH CHAMBERS DETAIN AND ALLOW FOR THE METERED FLOW OF WATER TO AN OUTFALL.
- 2.0 CHAMBER PARAMETERS**
- 2.1 THE CHAMBER SHALL BE INJECTION MOLDED OF POLYPROPYLENE RESIN TO BE INHERENTLY RESISTANT TO ENVIRONMENTAL STRESS CRACKING (ESCR), AND TO MAINTAIN ADEQUATE STIFFNESS THROUGH HIGHER TEMPERATURES EXPERIENCED DURING INSTALLATION AND SERVICE.
- 2.2 THE NOMINAL CHAMBER DIMENSIONS OF THE STORMTECH SC-740 SHALL BE 30.0 INCHES TALL, 51.0 INCHES WIDE AND 90.7 INCHES LONG. THE NOMINAL CHAMBER DIMENSIONS OF THE STORMTECH SC-310 SHALL BE 18.0 INCHES TALL, 34.0 INCHES WIDE AND 80.7 INCHES LONG. THE INSTALLED LENGTH OF A JOINED CHAMBER SHALL BE 85.4 INCHES.
- 2.3 THE CHAMBER SHALL HAVE A CONTINUOUSLY CURVED SECTION PROFILE.
- 2.4 THE CHAMBER SHALL BE OPEN-BOTTOMED.
- 2.5 THE CHAMBER SHALL INCORPORATE AN OVERLAPPING CORRUGATION JOINT SYSTEM TO ALLOW CHAMBER ROWS OF ALMOST ANY LENGTH TO BE CREATED. THE OVERLAPPING CORRUGATION JOINT SYSTEM SHALL BE EFFECTIVE WHILE ALLOWING A CHAMBER TO BE TRIMMED TO SHORTEN ITS OVERALL LENGTH.
- 2.6 THE NOMINAL STORAGE VOLUME OF A JOINED STORMTECH SC-740 CHAMBER SHALL BE 74.9 CUBIC FEET PER CHAMBER WHEN INSTALLED PER STORMTECH'S TYPICAL DETAILS (INCLUDES THE VOLUME OF CRUSHED ANGULAR STONE WITH AN ASSUMED 40% POROSITY). THIS EQUATES TO 2.2 CUBIC FEET OF STORAGE/SQUARE FOOT OF BED. THE NOMINAL STORAGE VOLUME OF AN INSTALLED STORMTECH SC-310 CHAMBER SHALL BE 31.0 CUBIC FEET PER CHAMBER WHEN INSTALLED PER STORMTECH'S TYPICAL DETAILS (INCLUDES THE VOLUME OF CRUSHED ANGULAR STONE WITH AN ASSUMED 40% POROSITY). THIS EQUATES TO 1.3 CUBIC FEET OF STORAGE/SQUARE FOOT OF BED.
- THE CHAMBER SHALL HAVE FORTY-EIGHT ORIFICES PENETRATING THE SIDEWALLS TO ALLOW FOR LATERAL CONVEYANCE OF WATER.
- 2.8 THE CHAMBER SHALL HAVE TWO ORIFICES NEAR ITS TOP TO ALLOW FOR EQUALIZATION OF AIR PRESSURE BETWEEN ITS INTERIOR AND EXTERIOR.
- 2.9 THE CHAMBER SHALL HAVE BOTH OF ITS ENDS OPEN TO ALLOW FOR UNIMPEDED HYDRAULIC FLOWS AND VISUAL INSPECTIONS DOWN A ROW'S ENTIRE LENGTH.
- 2.10 THE CHAMBER SHALL HAVE 14 CORRUGATIONS.
- 2.11 THE CHAMBER SHALL HAVE A CIRCULAR, INDENTED, FLAT SURFACE ON THE TOP OF THE CHAMBER FOR AN OPTIONAL 4-INCH INSPECTION PORT OR CLEAN-OUT.
- 2.12 THE CHAMBER SHALL BE ANALYZED AND DESIGNED USING AASHTO METHODS FOR THERMOPLASTIC CULVERTS CONTAINED IN THE LRFD BRIDGE DESIGN SPECIFICATIONS, 2ND EDITION, INCLUDING INTERIM SPECIFICATIONS THROUGH 2001. DESIGN LIVE LOAD SHALL BE THE AASHTO HS20 TRUCK. DESIGN SHALL CONSIDER EARTH AND LIVE LOADS AS APPROPRIATE FOR THE MINIMUM TO MAXIMUM SPECIFIED DEPTH OF FILL.
- 2.13 THE CHAMBER SHALL BE MANUFACTURED IN AN ISO 9001:2000 CERTIFIED FACILITY.
- 3.0 END CAP PARAMETERS**
- 3.1 THE END CAP SHALL BE INJECTION MOLDED OF POLYPROPYLENE RESIN TO BE INHERENTLY RESISTANT TO ENVIRONMENTAL STRESS CRACKING, AND TO MAINTAIN ADEQUATE STIFFNESS THROUGH HIGHER TEMPERATURES EXPERIENCED DURING INSTALLATION AND SERVICE.
- 3.2 THE END CAP SHALL BE DESIGNED TO FIT INTO ANY CORRUGATION OF A CHAMBER, WHICH ALLOWS; CAPPING A CHAMBER THAT HAS ITS LENGTH TRIMMED; SEGMENTING ROWS INTO STORAGE BASINS OF VARIOUS LENGTHS.
- THE END CAP SHALL HAVE SAW GUIDES TO ALLOW EASY CUTTING FOR VARIOUS DIAMETERS OF PIPE THAT MAY BE USED TO INLET THE SYSTEM.
- THE END CAP SHALL HAVE EXCESS STRUCTURAL ADEQUACIES TO ALLOW CUTTING AN ORIFICE OF ANY SIZE AT ANY INVERT ELEVATION.
- THE PRIMARY FACE OF AN END CAP SHALL BE CURVED OUTWARD TO RESIST HORIZONTAL LOADS GENERATED NEAR THE EDGES OF BEDS.
- THE END CAP SHALL BE MANUFACTURED IN AN ISO 9001:2000 CERTIFIED FACILITY.

STORMTECH GENERAL NOTES

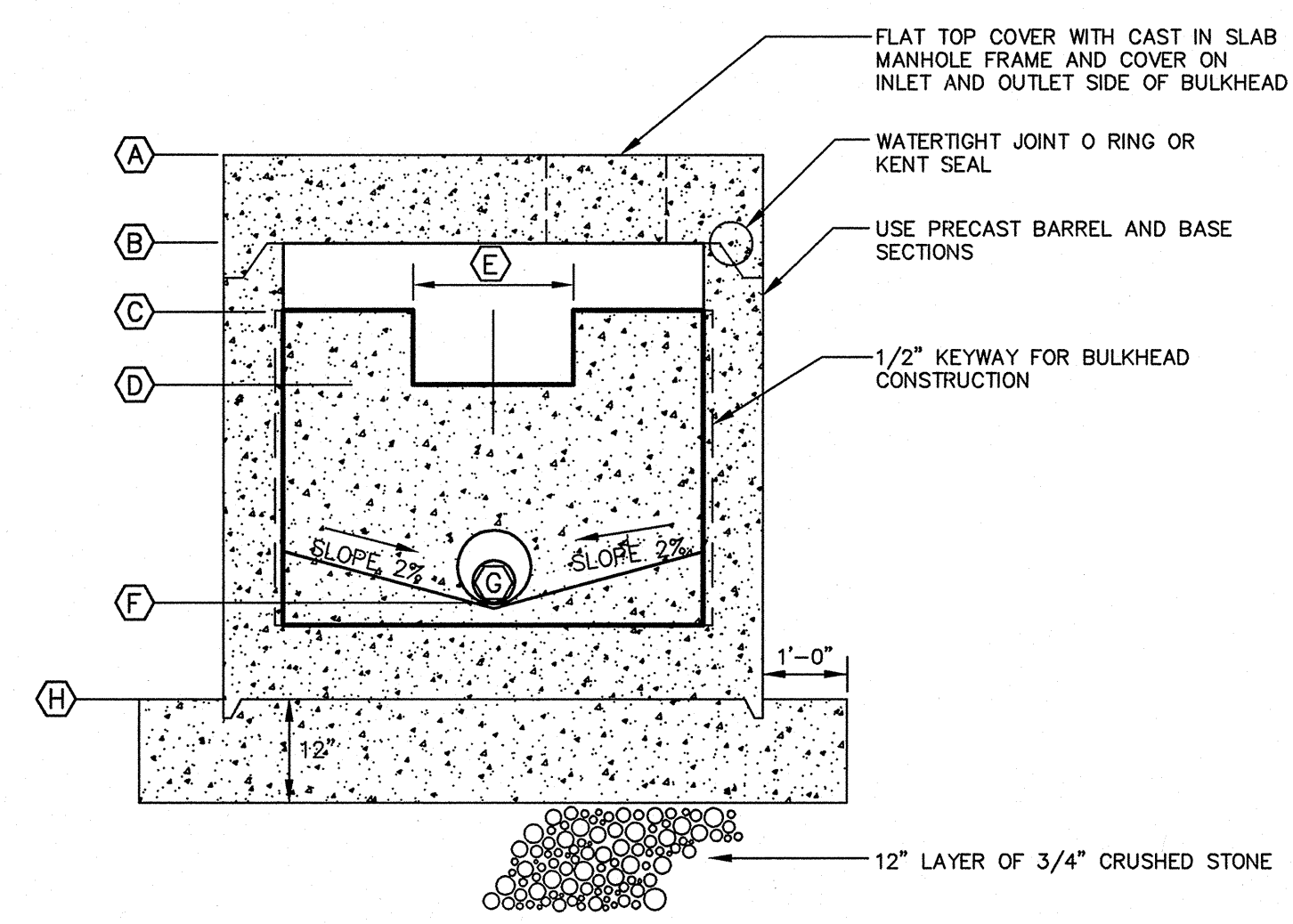
1. STORMTECH LLC ("STORMTECH") REQUIRES INSTALLING CONTRACTORS TO USE AND UNDERSTAND STORMTECH'S LATEST INSTALLATION INSTRUCTIONS PRIOR TO BEGINNING SYSTEM INSTALLATION.
2. OUR TECHNICAL SERVICES DEPARTMENT OFFERS INSTALLATION CONSULTATIONS TO INSTALLING CONTRACTORS. CONTACT OUR TECHNICAL SERVICES REPRESENTATIVE AT LEAST 30 DAYS PRIOR TO SYSTEM INSTALLATION TO ARRANGE A PRE-INSTALLATION CONSULTATION. OUR REPRESENTATIVES CAN THEN ANSWER QUESTIONS OR ADDRESS COMMENTS ON THE STORMTECH CHAMBER SYSTEM AND INFORM THE INSTALLING CONTRACTOR OF THE MINIMUM INSTALLATION REQUIREMENTS BEFORE BEGINNING THE SYSTEM'S CONSTRUCTION. CALL 1-888-892-2694 TO SPEAK TO A TECHNICAL SERVICE REPRESENTATIVE OR VISIT WWW.STORMTECH.COM TO RECEIVE A COPY OF OUR INSTALLATION INSTRUCTIONS.
3. STORMTECH'S REQUIREMENTS FOR SYSTEMS WITH PAVEMENT DESIGN (ASPHALT, CONCRETE PAVERS, ETC.): MINIMUM COVER IS 18 INCHES INCLUDING PAVEMENT; MAXIMUM COVER IS 96 INCHES INCLUDING PAVEMENT. FOR INSTALLATIONS THAT DO NOT INCLUDE PAVEMENT, WHERE RUTTING FROM VEHICLES MAY OCCUR, MINIMUM REQUIRED COVER IS 24 INCHES, MAXIMUM COVER IS 96 INCHES.
4. THE CONTRACTOR MUST REPORT ANY DISCREPANCIES WITH CHAMBER FOUNDATION MATERIALS BEARING CAPACITIES TO THE DESIGN ENGINEER.
5. AASHTO M288 CLASS 2 NON-WOVEN GEOTEXTILE (FILTER FABRIC) MUST BE USED AS INDICATED IN THE PROJECT PLANS.
6. STONE PLACEMENT BETWEEN CHAMBERS ROWS AND AROUND PERIMETER MUST FOLLOW INSTRUCTIONS AS INDICATED IN THE MOST CURRENT VERSION OF STORMTECH'S INSTALLATION INSTRUCTIONS.
7. BACKFILLING OVER THE CHAMBERS MUST FOLLOW REQUIREMENTS AS INDICATED IN THE MOST CURRENT VERSION OF STORMTECH'S INSTALLATION INSTRUCTIONS.
8. THE CONTRACTOR MUST REFER TO STORMTECH'S INSTALLATION INSTRUCTIONS FOR A TABLE OF ACCEPTABLE VEHICLE LOADS AT VARIOUS DEPTHS OF COVER. THIS INFORMATION IS ALSO AVAILABLE AT STORMTECH'S WEBSITE: WWW.STORMTECH.COM. THE CONTRACTOR IS RESPONSIBLE FOR PREVENTING VEHICLES THAT EXCEED STORMTECH'S REQUIREMENTS FROM TRAVELING ACROSS OR PARKING OVER THE STORMWATER SYSTEM. TEMPORARY FENCING, WARNING TAPE AND APPROPRIATELY LOCATED SIGNS ARE COMMONLY USED TO PREVENT UNAUTHORIZED VEHICLES FROM ENTERING SENSITIVE CONSTRUCTION AREAS.
9. THE CONTRACTOR MUST APPLY EROSION AND SEDIMENT CONTROL MEASURES TO PROTECT THE STORMWATER SYSTEM DURING ALL PHASES OF SITE CONSTRUCTION PER LOCAL CODES AND DESIGN ENGINEER'S SPECIFICATIONS.
10. STORMTECH PRODUCT WARRANTY IS LIMITED. SEE CURRENT PRODUCT WARRANTY FOR DETAILS. TO ACQUIRE A COPY CALL STORMTECH AT 1-888-892-2694 OR VISIT WWW.STORMTECH.COM.

SUBSURFACE DETENTION SYSTEM MAY BE SUBSTITUTED WITH AN ENGINEER APPROVED EQUIVALENT THAT PROVIDES EQUAL DETENTION STORAGE

NOTES:

1. SUBMIT MANUFACTURER'S DETENTION SYSTEM DRAWINGS FOR ENGINEER'S REVIEW AND APPROVAL.

2. SEE SHEET C102, GRADING AND DRAINAGE PLAN FOR ADDITIONAL STORM DRAIN DESIGN DATA.



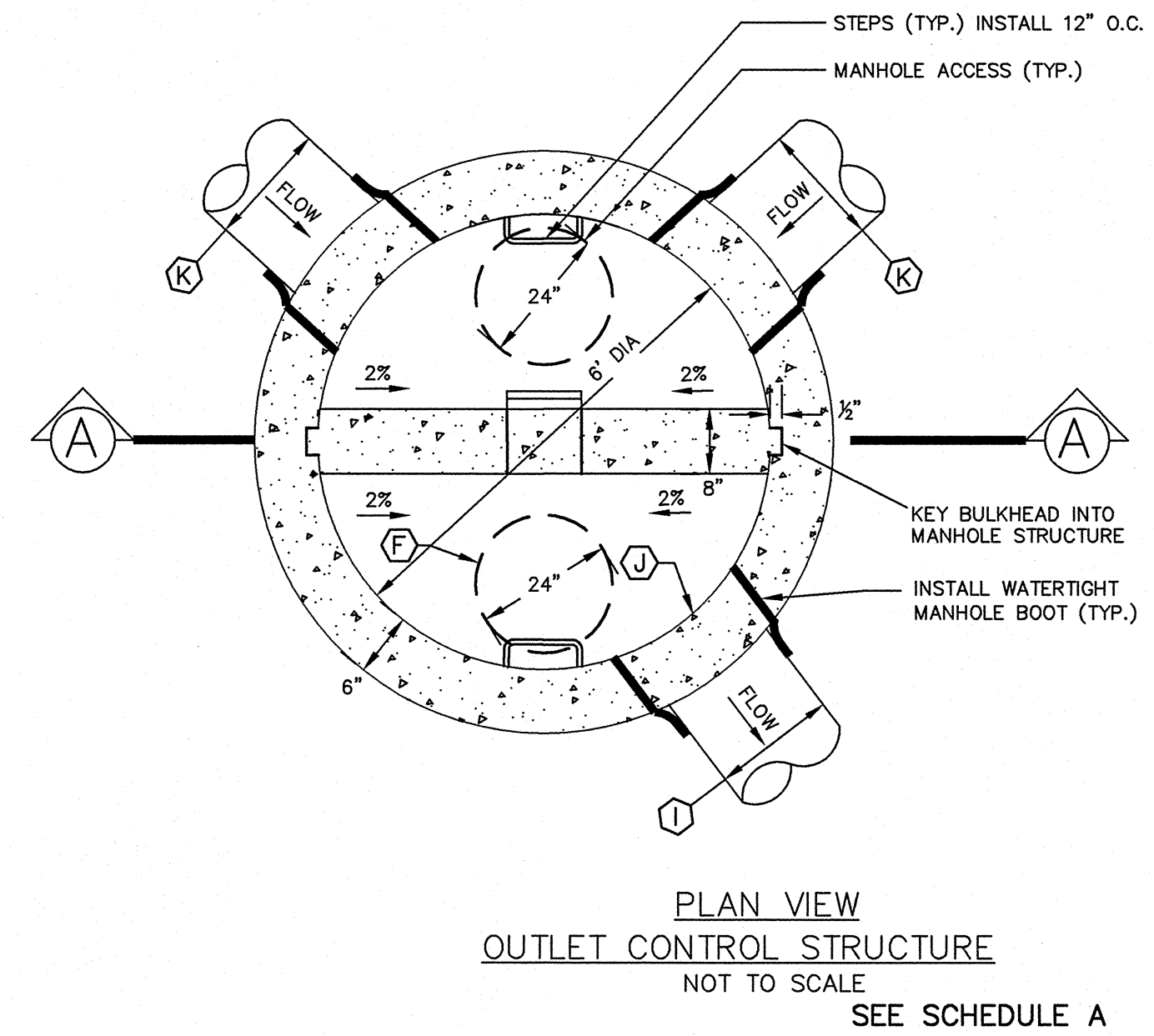
SECTION A-A
OUTLET CONTROL STRUCTURE
NOT TO SCALE
SEE SCHEDULE A

SCHEDULE A OUTLET CONTROL STRUCTURE		
ITEM	DESCRIPTION	DIMENSION/ELEVATION
(A)	TOP OF STRUCTURE	*
(B)	UNDERSIDE TOP SLAB	*
(C)	TOP CONCRETE BULKHEAD	34.50
(D)	WEIR INVERT	33.50
(E)	WEIR LENGTH	6"
(F)	ORIFICE INVERT	31.00
(G)	ORIFICE DIAMETER	3"
(H)	BOTTOM OF STRUCTURE	*
(I)	PIPE DIAMETER	12"
(J)	INVERT OUT	30.80
(K)	PIPE DIAMETER	12"
(L)	INVERT IN	31.00

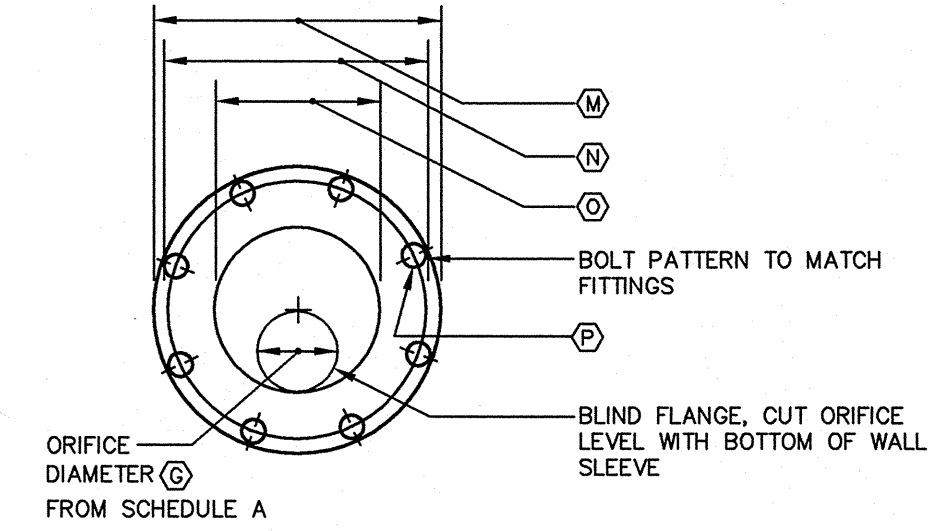
*STRUCTURE DIMENSIONS SHALL BE PER MANUFACTURER'S DESIGN

NOTES:
STRUCTURE SHALL CONFORM TO MANHOLE DESIGN REQUIREMENTS AND SHALL BE H-20 LOAD RATED.

1 1/2" CRUSHED ANGULAR STONE GRADATION	
SIEVE	% PASSING BY WEIGHT
2"	100
1 1/2"	90 - 100
1"	20 - 55
3/4"	0 - 15
3/8"	0 - 5

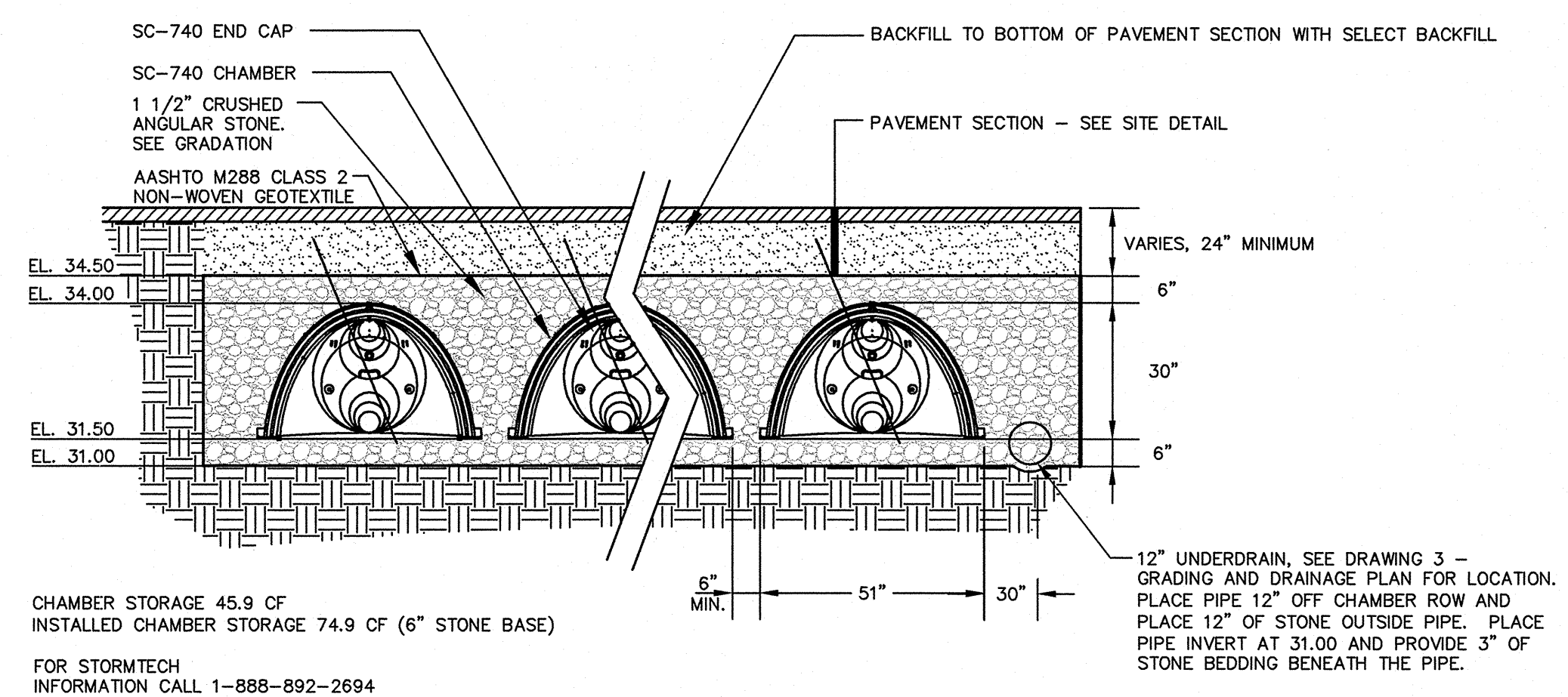


PLAN VIEW
OUTLET CONTROL STRUCTURE
NOT TO SCALE
SEE SCHEDULE A



SCHEDULE C ORIFICE	
DESCRIPTION	DIMENSION
(M) FLANGE O.D.	13.5"
(N) BOLT CIRCLE	11.75"
(O) NOMINAL PIPE DIA.	8"
(P) BOLT HOLE DIA.	7/8"

ORIFICE DETAIL
SEE SCHEDULE C



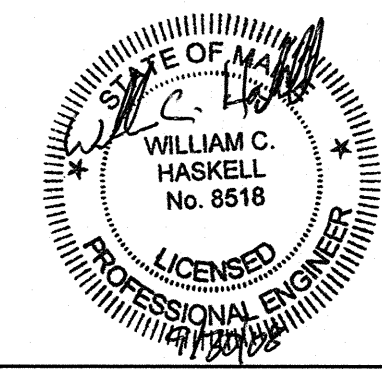
CHAMBER CROSS SECTION
N.T.S.

Mitchell & Associates
LANDSCAPE ARCHITECTS

The Staples School
70 Center Street
Portland, Maine 04101

GP Gorrill-Palmer
Consulting Engineers, Inc.
Traffic and Civil
Engineering Services

Tel: (207) 774-4427
Fax: (207) 874-2460
www.mitchellandassociates.biz



Gawron Turgeon
ARCHITECTS
29 Black Point Road
Scarborough, Maine 04074
www.gawronturgeon.com
207-883-6307 tel 207-883-0361 fax

AVESTA
HOUSING

FLORENCE HOUSE
190 VALLEY STREET
PORTLAND, MAINE

Preble Street

REVISIONS

#	DATE	DESCRIPTION
1	12.7.07	MAINE HOUSING 50% REVIEW SET
2	5.2.08	90% MAINE HOUSING REVIEW SET
3	7.31.08	100% MAINE HOUSING REVIEW SET
4	9.2.08	100% BID DOCUMENTS

DATE:	12.7.07
PROJECT #:	100405
DRAWN BY:	CAP
CHECKED BY:	WH
DRAWING SCALE:	N.T.S.

SHEET TITLE
DETENTION SYSTEM
DETAILS

C 306

© COPYRIGHT 1985-2008
REPRODUCTION OR USE OF THIS
DOCUMENT WITHOUT WRITTEN
PERMISSION OF GAWRON TURGEON
ARCHITECTS IS PROHIBITED.