

REVISIONS

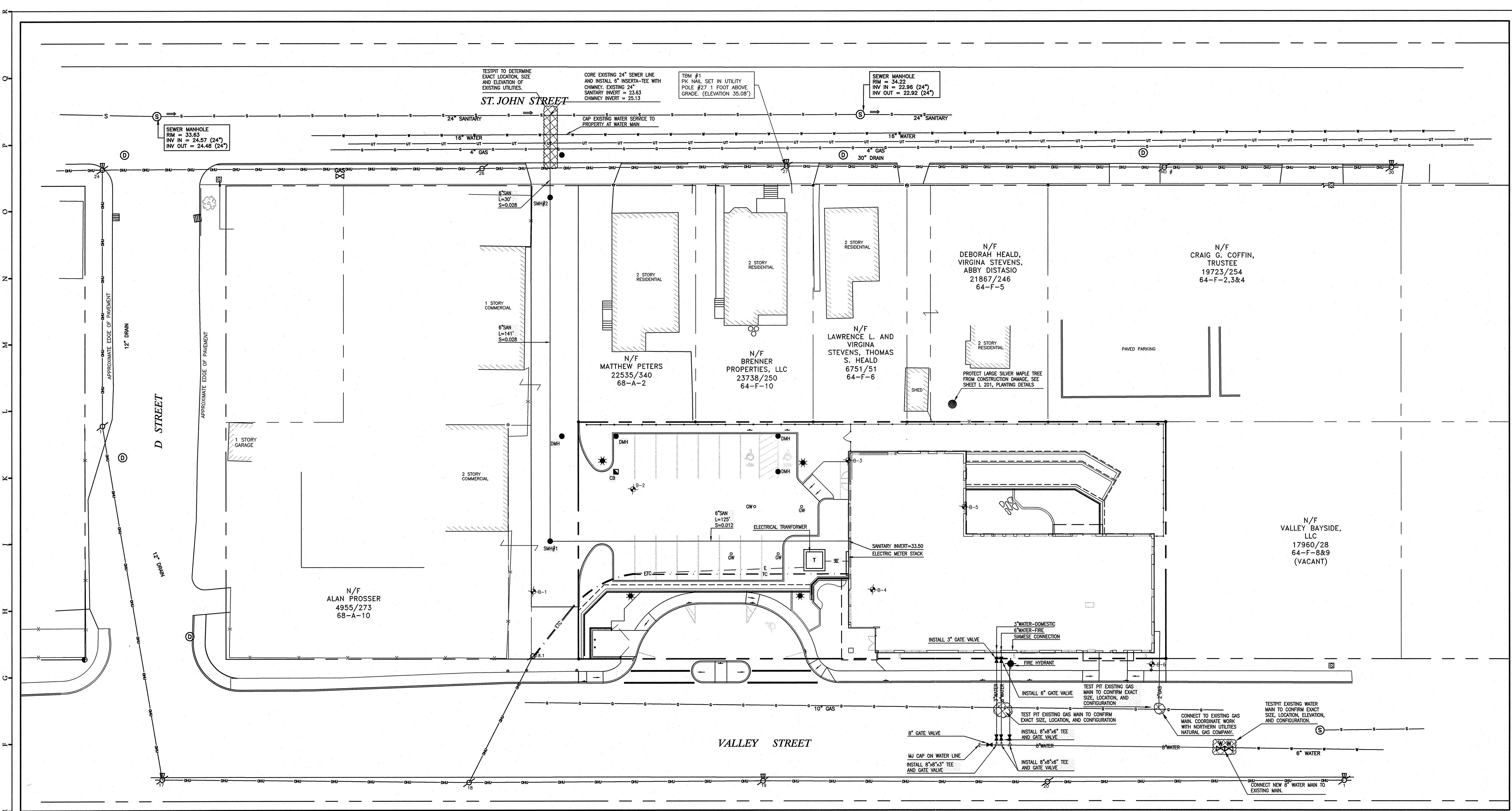
#	DATE	DESCRIPTION
1	12.7.07	MAINE HOUSING 50% REVIEW SET
2	5.2.08	90% MAINE HOUSING REVIEW SET
3	7.31.08	100% MAINE HOUSING REVIEW SET
4	9.2.08	100% BID DOCUMENTS

DATE:	12.7.07
PROJECT #	100405
DRAWN BY:	BVD
CHECKED BY:	WCH
DRAWING SCALE	1"=20'-0"

SHEET TITLE

UTILITIES PLAN

C 103



LEGEND

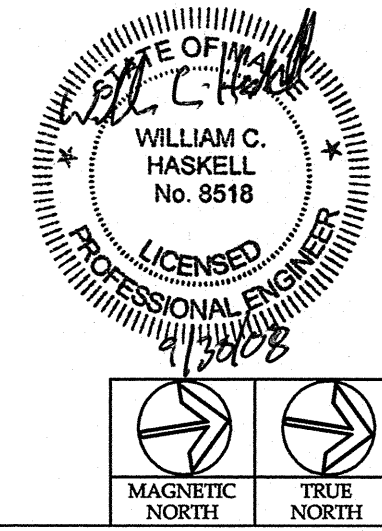
	EXISTING	PROPOSED		EXISTING	PROPOSED
PROPERTY LINE	---	---	WATER SERVICE	W	WATER
MONUMENT FOUND	■ MON		SEWER SERVICE	S	SS
REBAR FOUND	••		GAS SERVICE	G	GAS
CATCHBASIN	■	CB ■	UNDERGROUND TELEPHONE	UT	
SEWER MANHOLE	⊙	SM#1 ●	OVERHEAD WIRES	OHU	
DRAIN MANHOLE	⊙	DMH ●	UNDERGROUND ELECTRIC TELEPHONE + CABLE		E/TC
GEOTHERMAL WELL		GW ○	UNDERGROUND SECONDARY ELECTRIC		SE
WATER VALVE	⊕		FENCE	—	—
FIRE HYDRANT	⊕		BASE OF WALL	---	---
GAS VALVE	⊕		SIGN	—	—
UTILITY POLE	⊕		TEST BORING	⊕	⊕
UTILITY POLE WITH LIGHT	⊕				
LIGHT POLE	⊕				

UTILITY NOTES

1. THE UNDERGROUND UTILITIES SHOWN HAVE BEEN LOCATED FROM FIELD SURVEY INFORMATION AND EXISTING DRAWINGS. THE SURVEYOR MAKES NO GUARANTEES THAT THE UNDERGROUND UTILITIES SHOWN COMPRISE ALL SUCH UTILITIES IN THE AREA. EITHER IN SERVICE OR ABANDONED. THE SURVEYOR FURTHER DOES NOT WARRANT THAT THE UNDERGROUND UTILITIES SHOWN ARE IN THE EXACT LOCATION INDICATED ALTHOUGH HE DOES CERTIFY THAT THEY ARE LOCATED AS ACCURATELY AS POSSIBLE FROM INFORMATION AVAILABLE. THE SURVEYOR HAS NOT PHYSICALLY LOCATED THE UNDERGROUND UTILITIES. CALL 1-888-DIGSAFE AT LEAST THREE BUSINESS DAYS BEFORE PERFORMING ANY CONSTRUCTION.
2. NEAREST FIRE HYDRANT IS LOCATED ON THE NORTHEASTERN CORNER OF C STREET AND ST. JOHN STREET AT A DISTANCE OF 405 FEET FROM THE PROPERTY LINE ON VALLEY STREET.

SANITARY STRUCTURES

STRUCTURE	SIZE	RIM	INV. IN	INV. OUT
BUILDING	2'x2'	-	-	33.50
SMH#1	4' DIA	37.15	32.00	31.80
SMH#2	4' DIA	33.90	28.00	26.00
	EXISTING GRADE		23.63 (EXISTING)	23.63 (EXISTING)
			25.15	0.00
			0.00	0.00



Mitchell & Associates
 LANDSCAPE ARCHITECTS

GP Gorrill-Palmer Consulting Engineers, Inc.
 Traffic and Civil Engineering Services