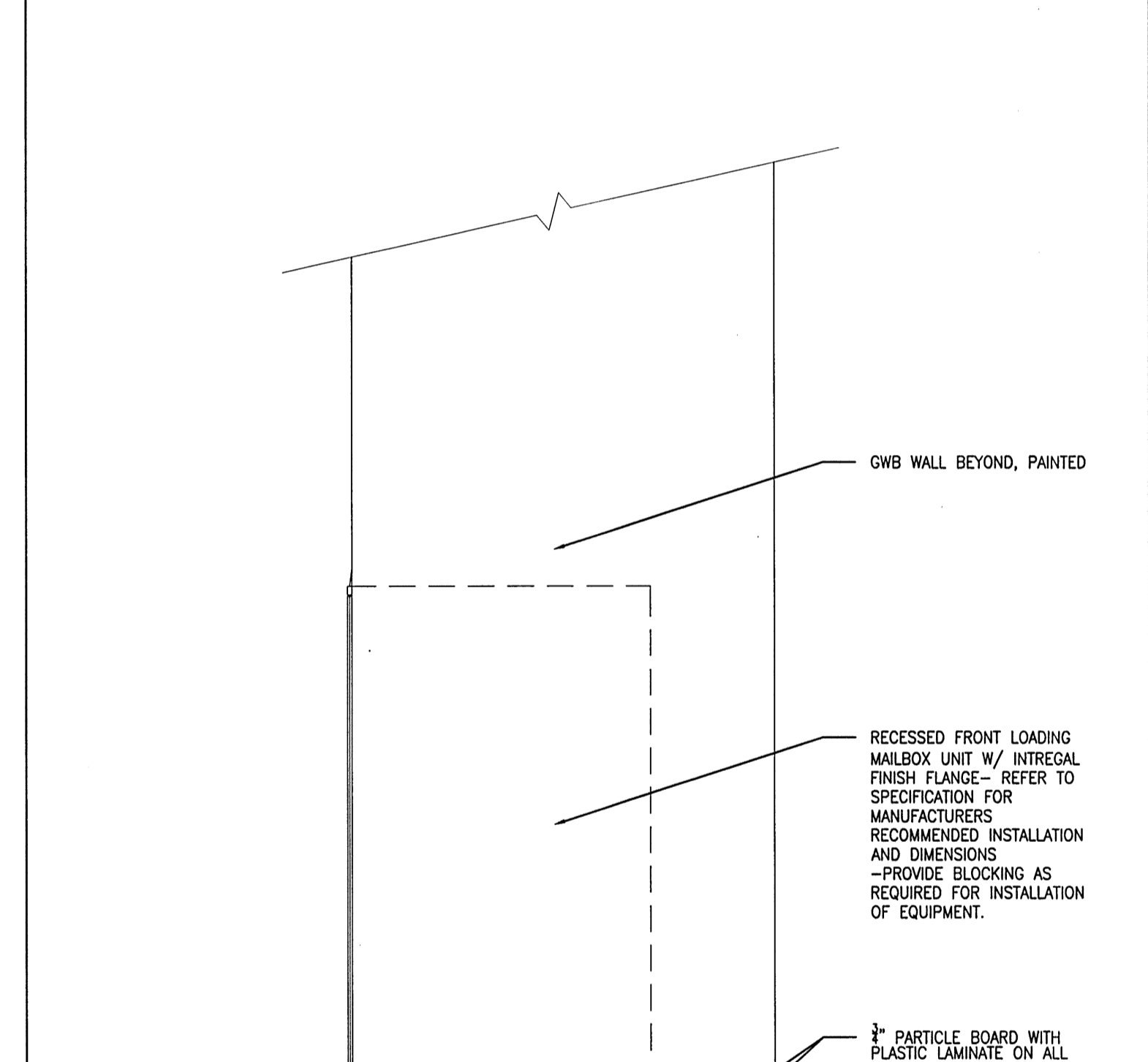
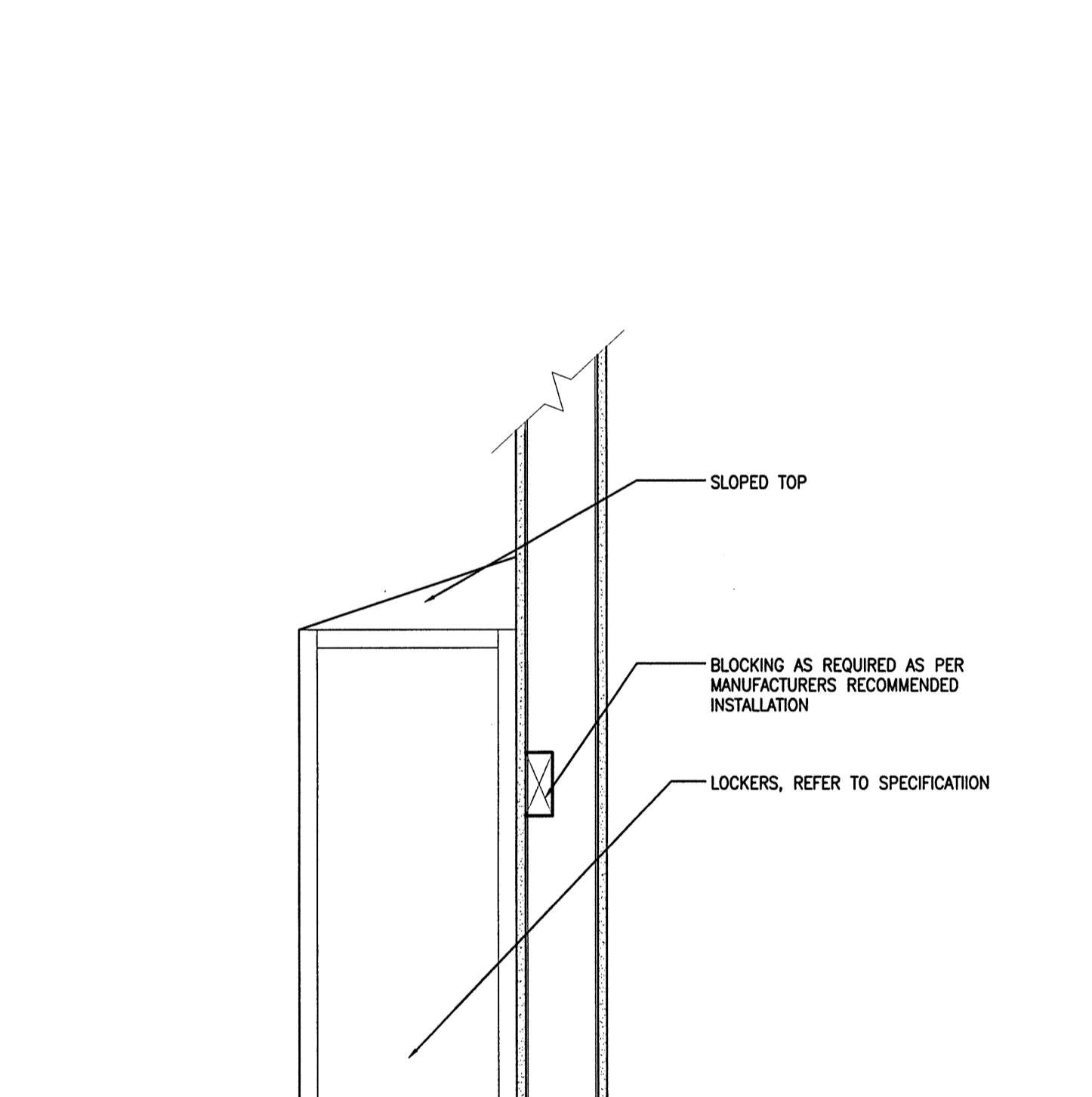
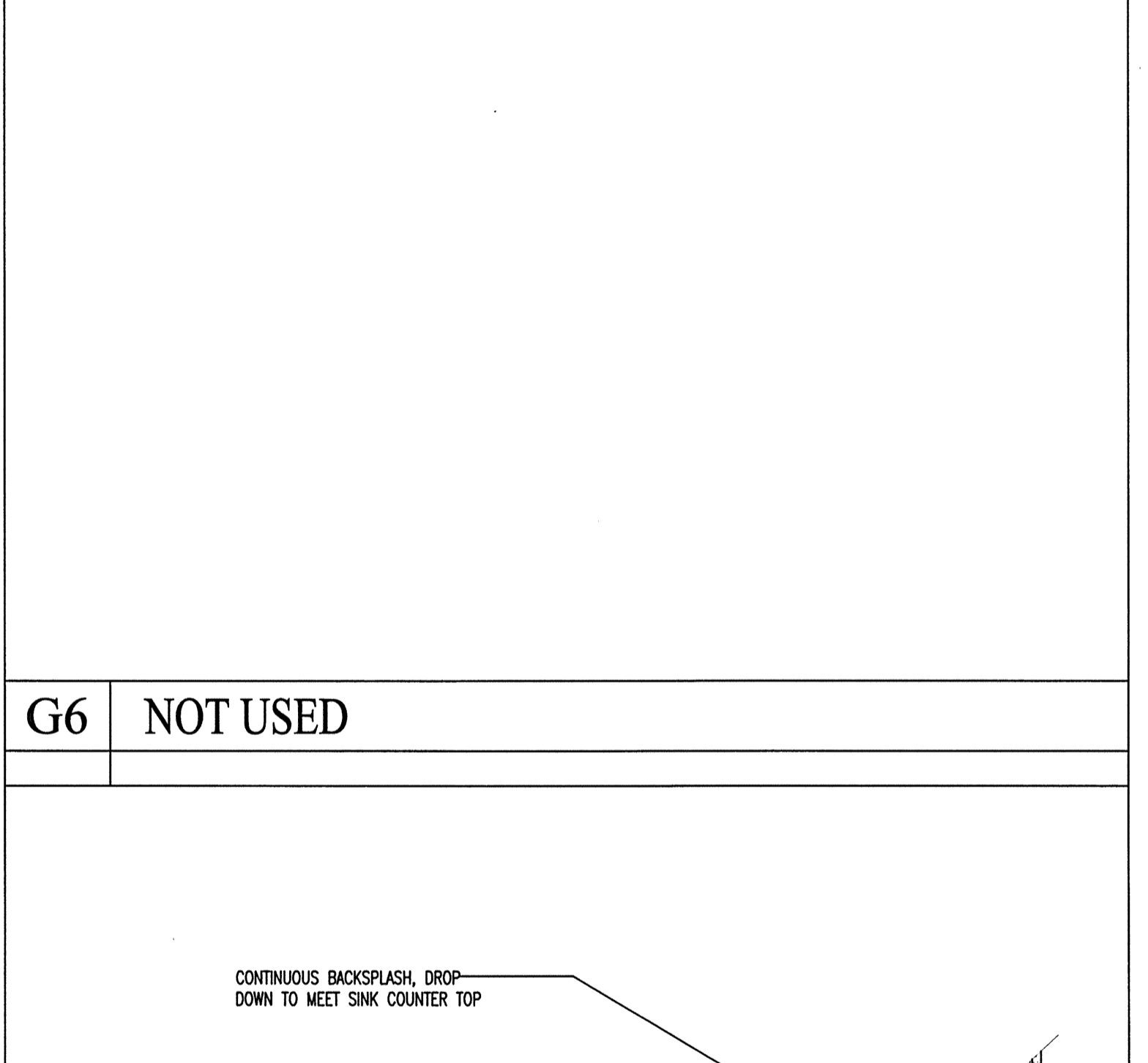
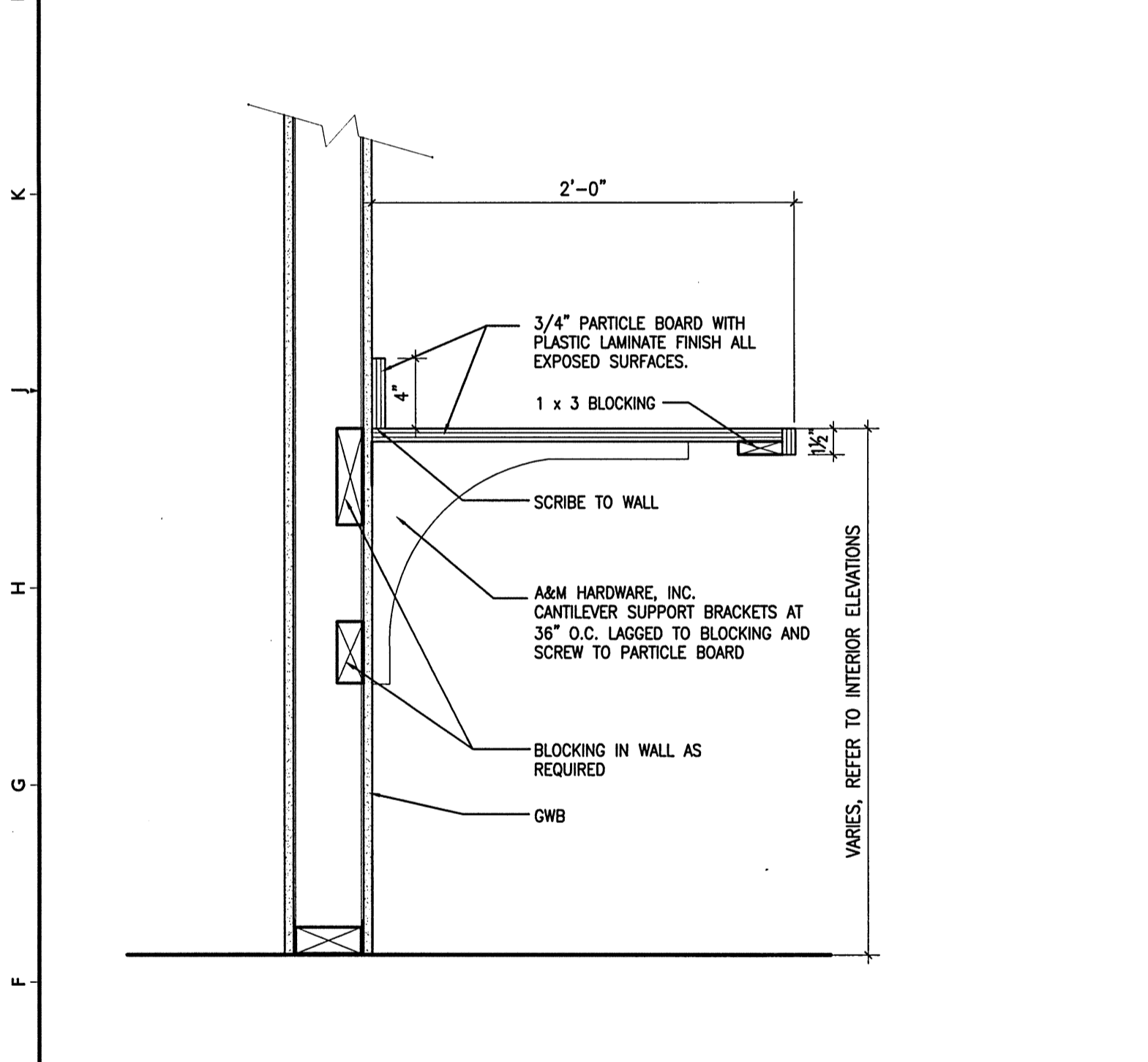


L1 RECEPTION DESK
1 1/2"=1'-0" DETAIL AT TRANSACTION COUNTER

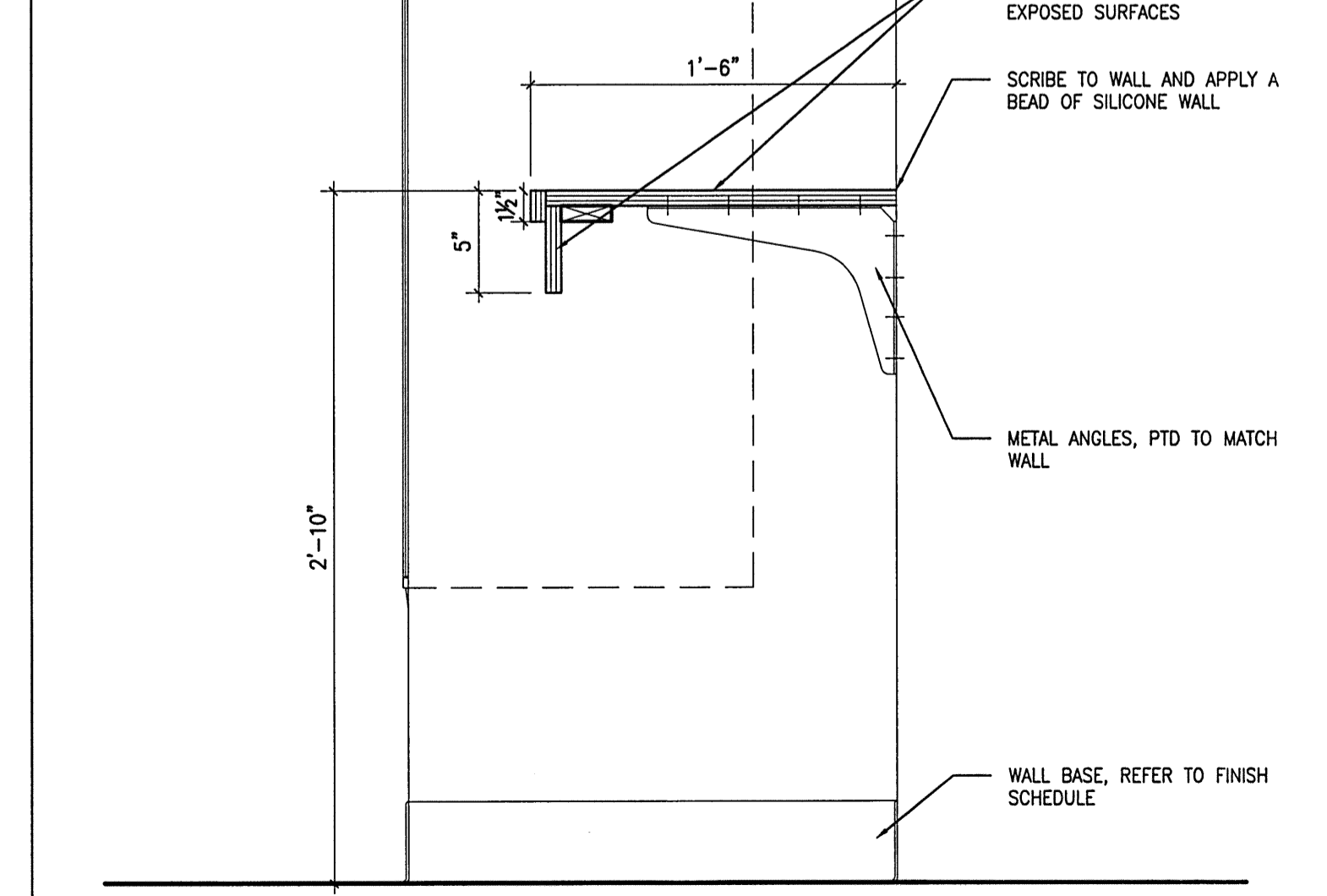
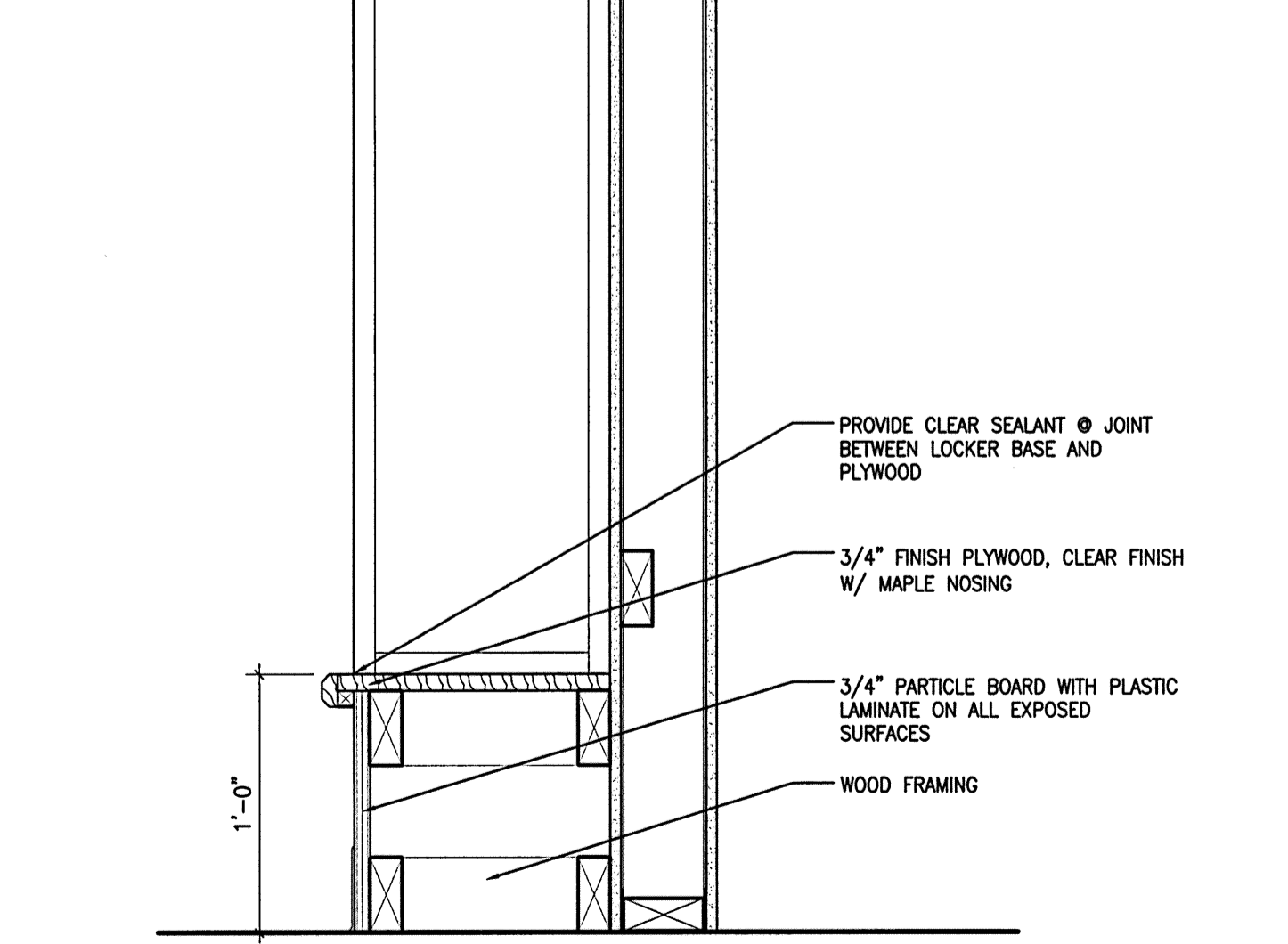
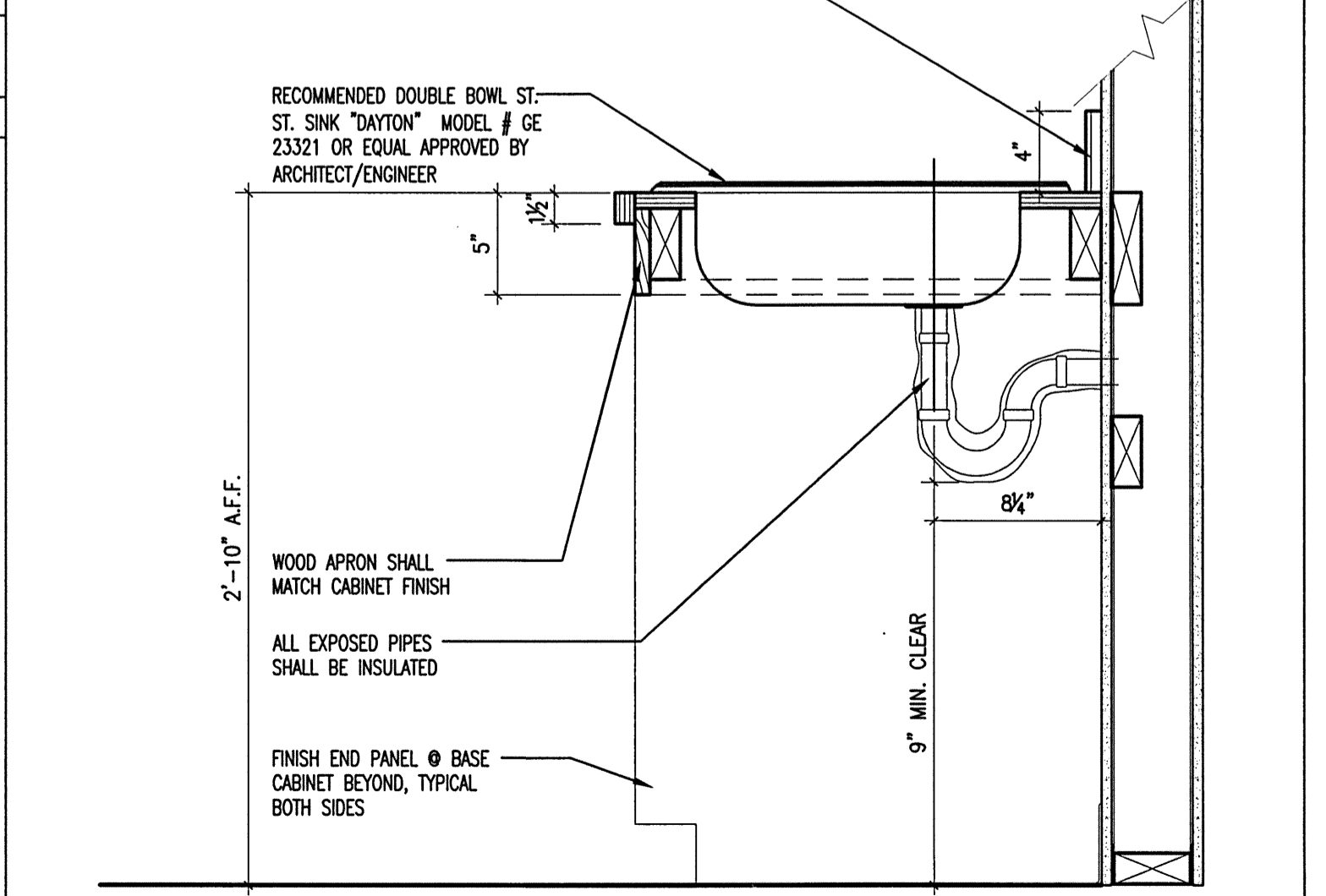
L6 RECEPTION DESK
1 1/2"=1'-0" DETAIL AT ADA HEIGHT COUNTER

L11 TYPICAL WORKSURFACE DETAIL
1 1/2"=1'-0"

L14 OPEN BENCH DETAIL
1 1/2"=1'-0" SHOWER ROOMS



E1 OPEN COUNTERTOP DETAIL
1 1/2"=1'-0" WITH BACKSPASH

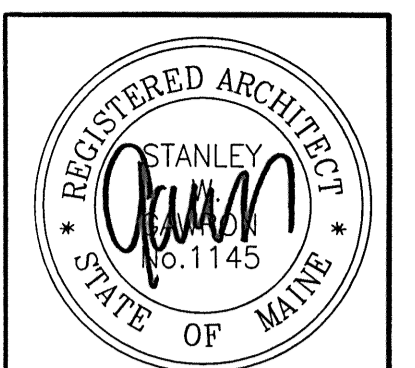


A1 BENCH DETAIL
1 1/2"=1'-0" LOBBY

A6 TYPICAL ADA SINK DETAIL
1 1/2"=1'-0"

A11 LOCKER DETAIL
1 1/2"=1'-0" EMPLOYEE LOUNGE 013

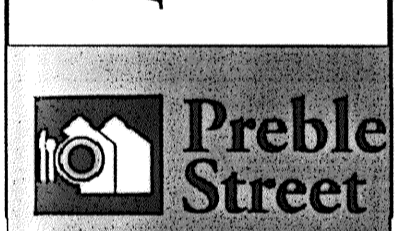
A14 MAIL COUNTER DETAIL
1 1/2"=1'-0" MAIL



Gawron Turgeon ARCHITECTS
29 Black Point Road
Scarborough, Maine 04074
www.gawronturgeon.com
207-883-6307 tel 207-883-0361 fax



FLORENCE HOUSE
190 VALLEY STREET
PORTLAND, MAINE



REVISIONS		
#	DATE	DESCRIPTION
1	4.03.07	CONTRACT ZONE SUBMISSION
2	5.01.07	CONTRACT ZONE SUBMISSION
3	7.10.07	CONTRACT ZONE SUBMISSION
4	9.04.07	SITE PLAN AND SUBDIVISION REVIEW
5	10.02.07	FINAL SITE PLAN REVIEW
6	11.15.07	50% REVIEW SET
7	12.04.07	50% MAINE HOUSING REVIEW SET
8	05.02.08	90% MAINE HOUSING REVIEW SET
9	07.31.08	100% MAINE HOUSING REVIEW SET
10	09.02.08	100% BID DOCUMENTS

DATE	09/02/08
PROJECT #	100405
DRAWN BY:	LAP
CHECKED BY:	MET
DRAWING SCALE	AS NOTED

SHEET TITLE
INTERIOR DETAILS

A931

© COPYRIGHT 1985-2008
REPRODUCTION OR RESALE OF THIS DOCUMENT WITHOUT WRITTEN PERMISSION OF GAWRON TURGEON ARCHITECTS IS PROHIBITED.