

**Gawron Turgeon**  
ARCHITECTS  
29 Black Point Road  
Scarborough, Maine 04074  
www.gawronturgeon.com  
207-883-6307 tel 207-883-6361 fax



**FLORENCE HOUSE**  
190 VALLEY STREET  
PORTLAND, MAINE



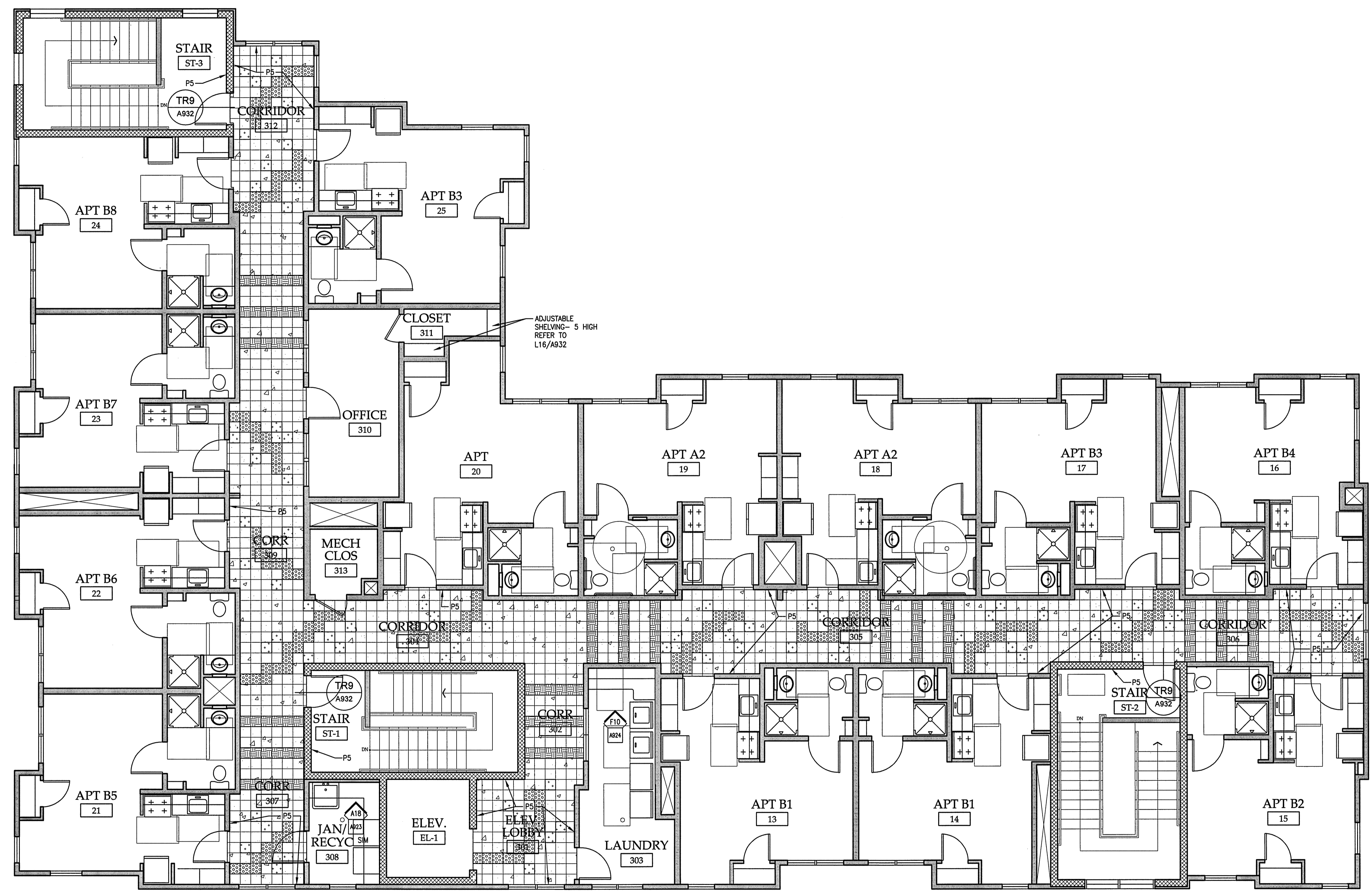
REVISIONS		
#	DATE	DESCRIPTION
1	4.03.07	CONTRACT ZONE SUBMISSION
2	5.01.07	CONTRACT ZONE SUBMISSION
3	7.10.07	CONTRACT ZONE SUBMISSION
4	9.04.07	SITE PLAN AND SUBDIVISION REVIEW
5	10.02.07	FINAL SITE PLAN REVIEW
6	11.15.07	50% REVIEW SET
7	12.04.07	50% MAINE HOUSING REVIEW SET
8	05.02.08	90% MAINE HOUSING REVIEW SET
9	07.31.08	100% MAINE HOUSING REVIEW SET
10	09.02.08	100% BID DOCUMENTS

DATE:	09/02/08
PROJECT #:	100405
DRAWN BY:	SCM
CHECKED BY:	MET
DRAWING SCALE:	AS NOTED

SHEET TITLE  
**THIRD FLOOR FINISH PLAN**

**A903**

© COPYRIGHT 1985-2008  
REPRODUCTION OR USE OF THIS DOCUMENT WITHOUT WRITTEN PERMISSION OF GAWRON TURGEON ARCHITECTS IS PROHIBITED.



- VCT 1
- VCT 2
- VCT 3
- VCT 4
- VCT 5
- VCT 6
- R3

NOTE:  
1. FLOOR PATTERN PLAN SHOWS DESIGN INTENT OF FLOORING. REFER TO INTERIOR LEGEND AND SCHEDULE FOR ADDITIONAL INFORMATION.  
2. WHERE NO PATTERN IS SHOWN, REFER TO FINISH SCHEDULE FOR FLOORING MATERIAL.

**A1** THRID FLOOR FINISH PLAN  
3/16"=1'-0"

**A18** LEGEND  
3/16"=1'-0"  
FLOOR PATTERN PLAN