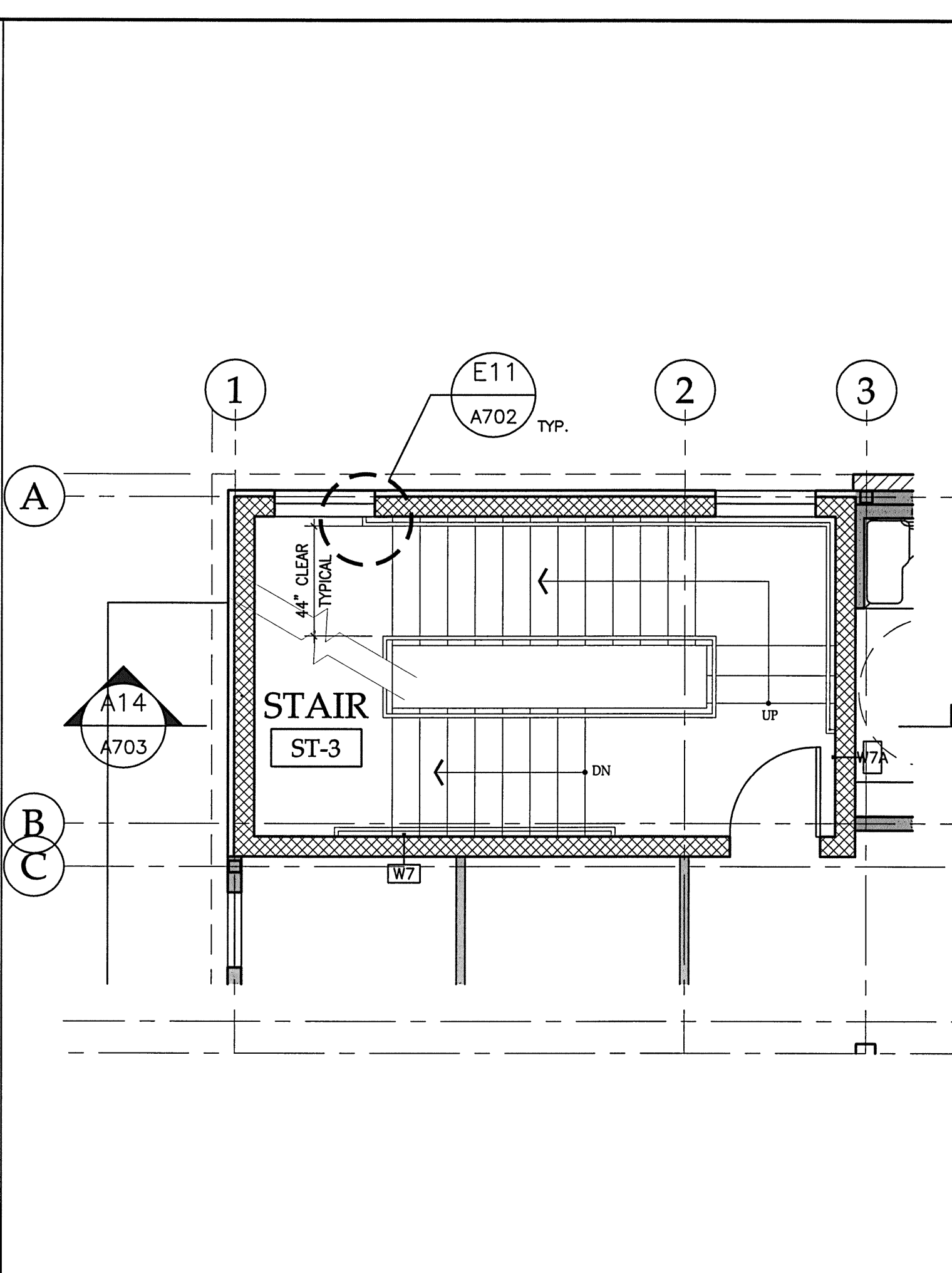
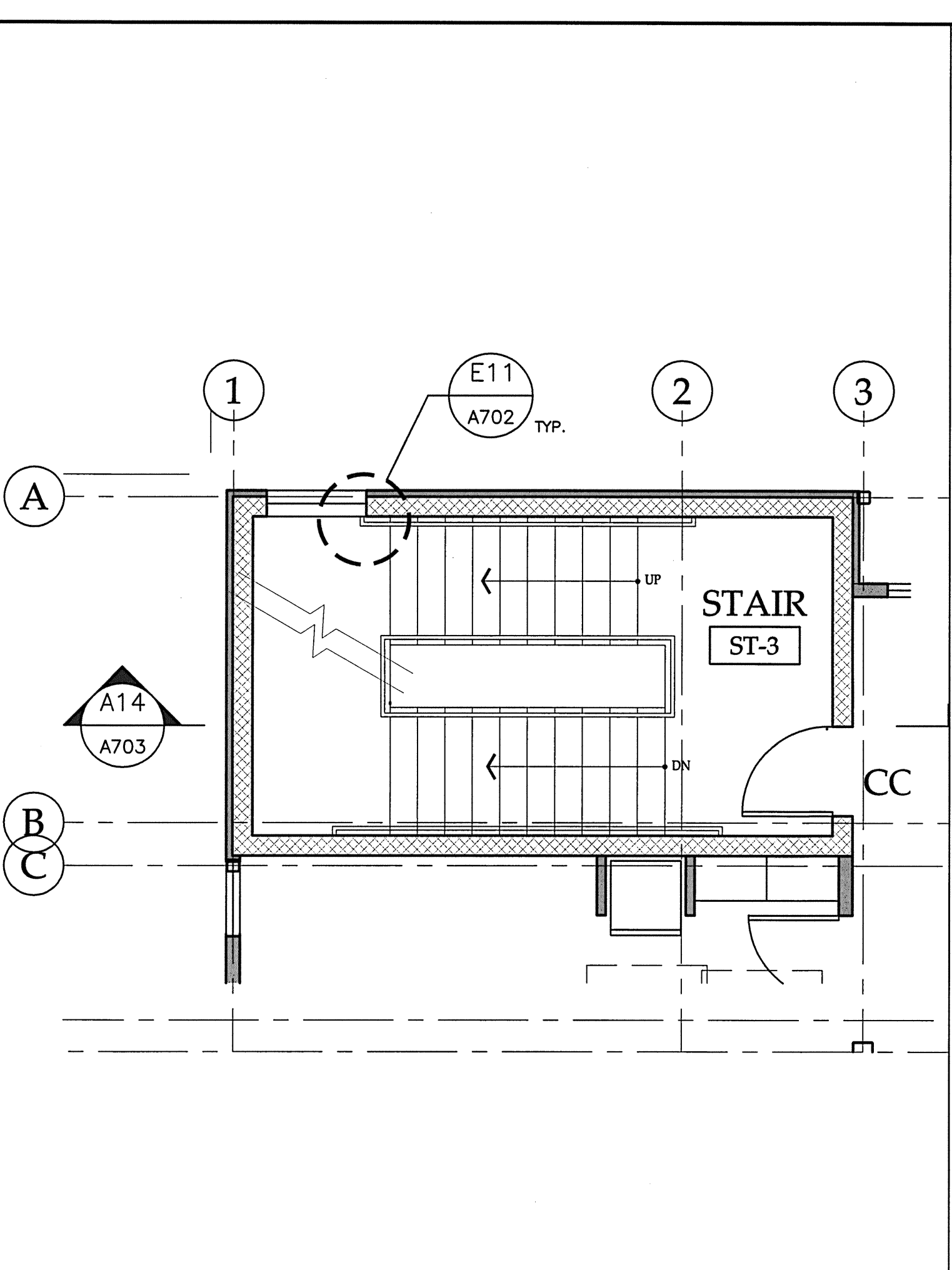


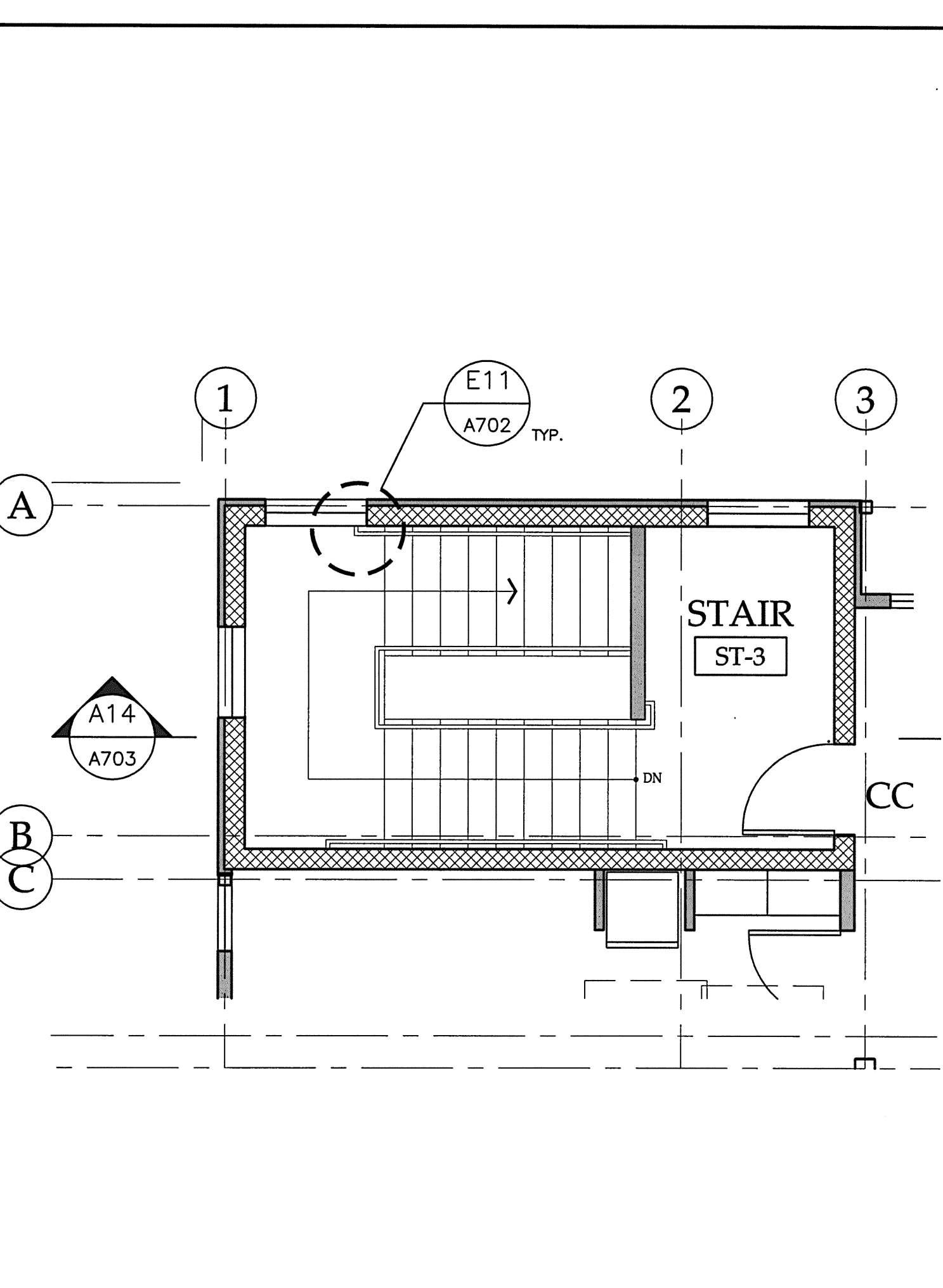
J1 STAIR 3 - BASEMENT FLOOR PLAN
1/4"=1'-0"



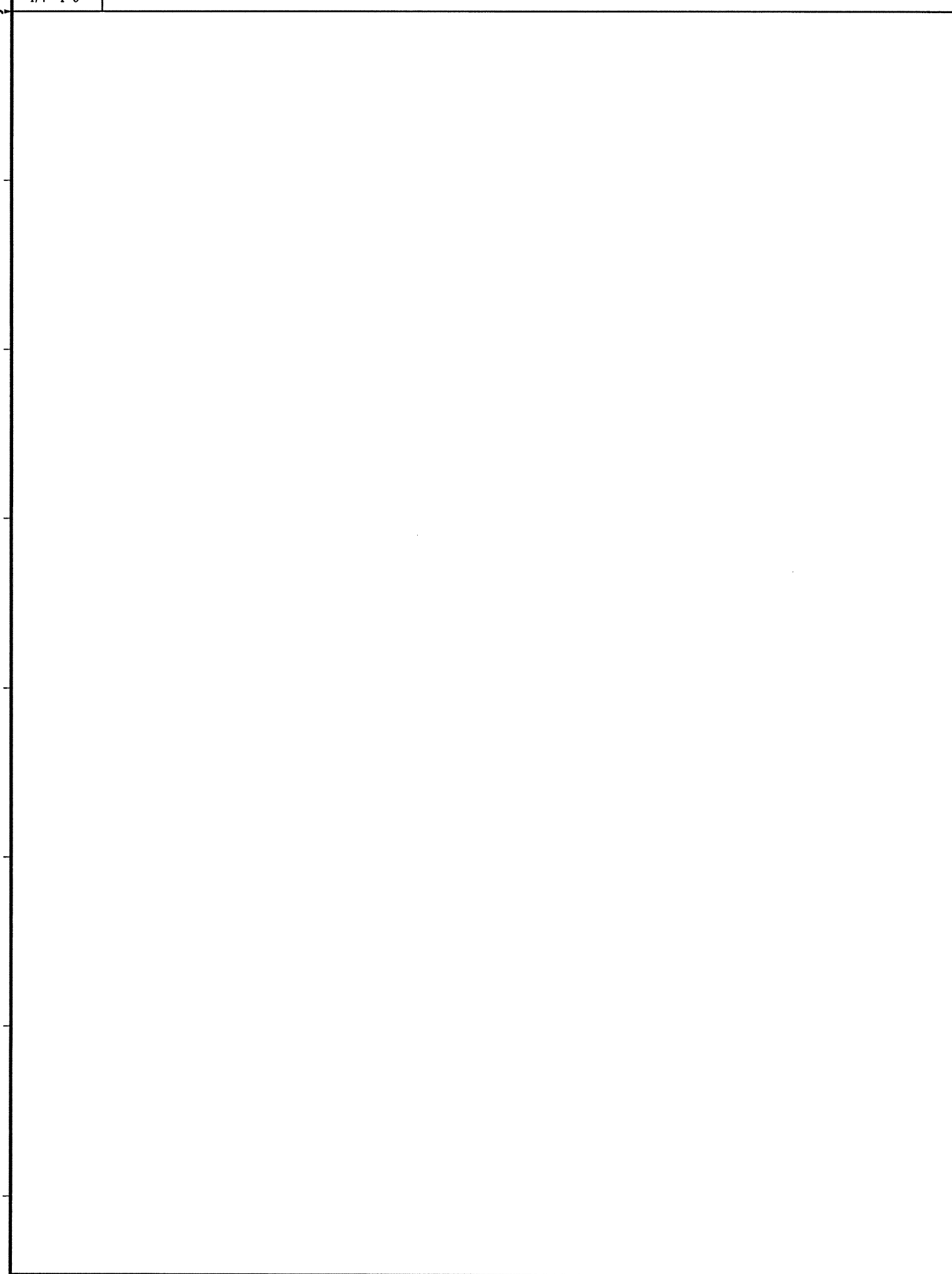
J6 STAIR 3 - 1ST FLOOR PLAN
1/4"=1'-0"



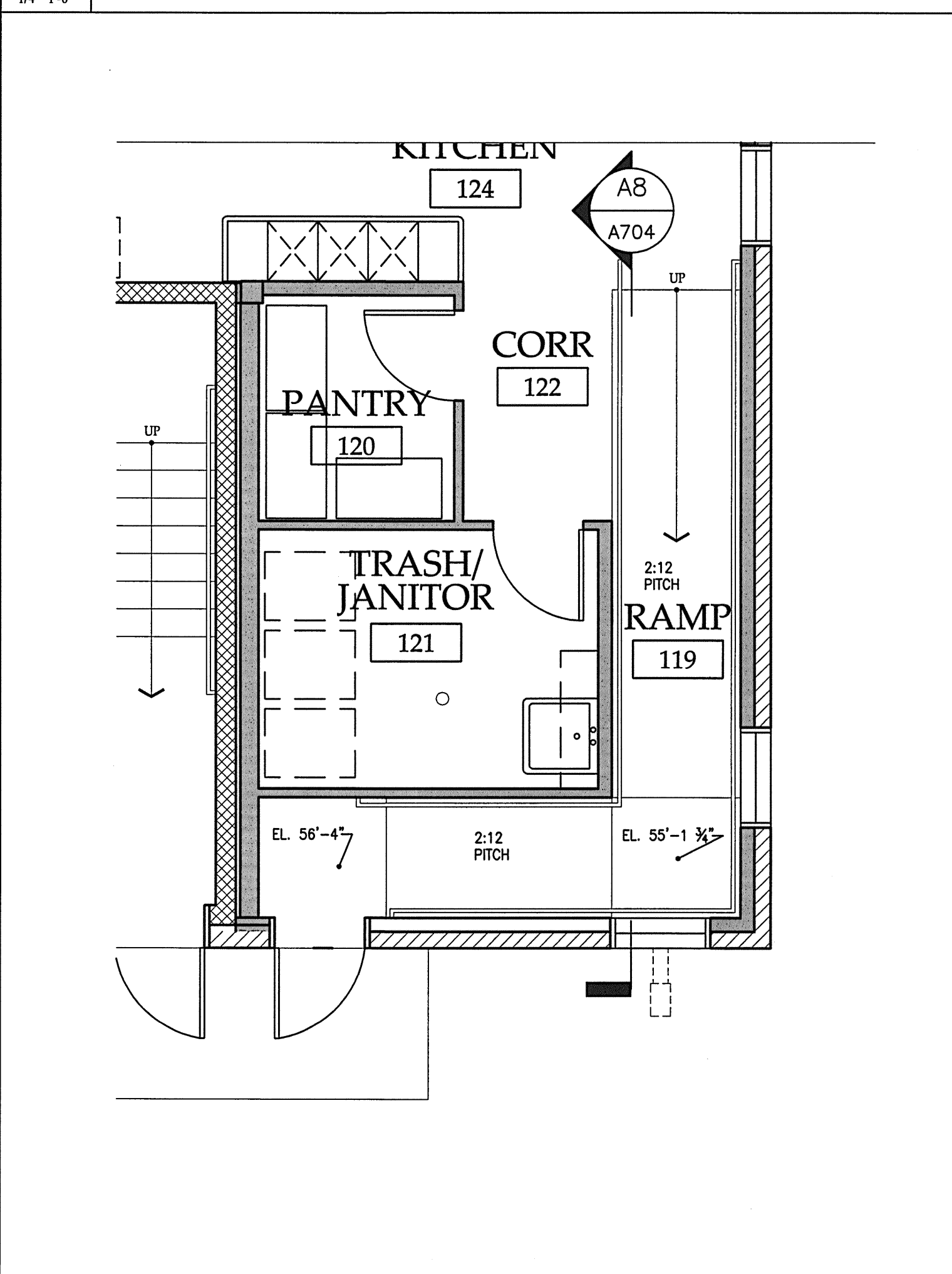
J11 STAIR 3 - 2ND FLOOR PLAN
1/4"=1'-0"



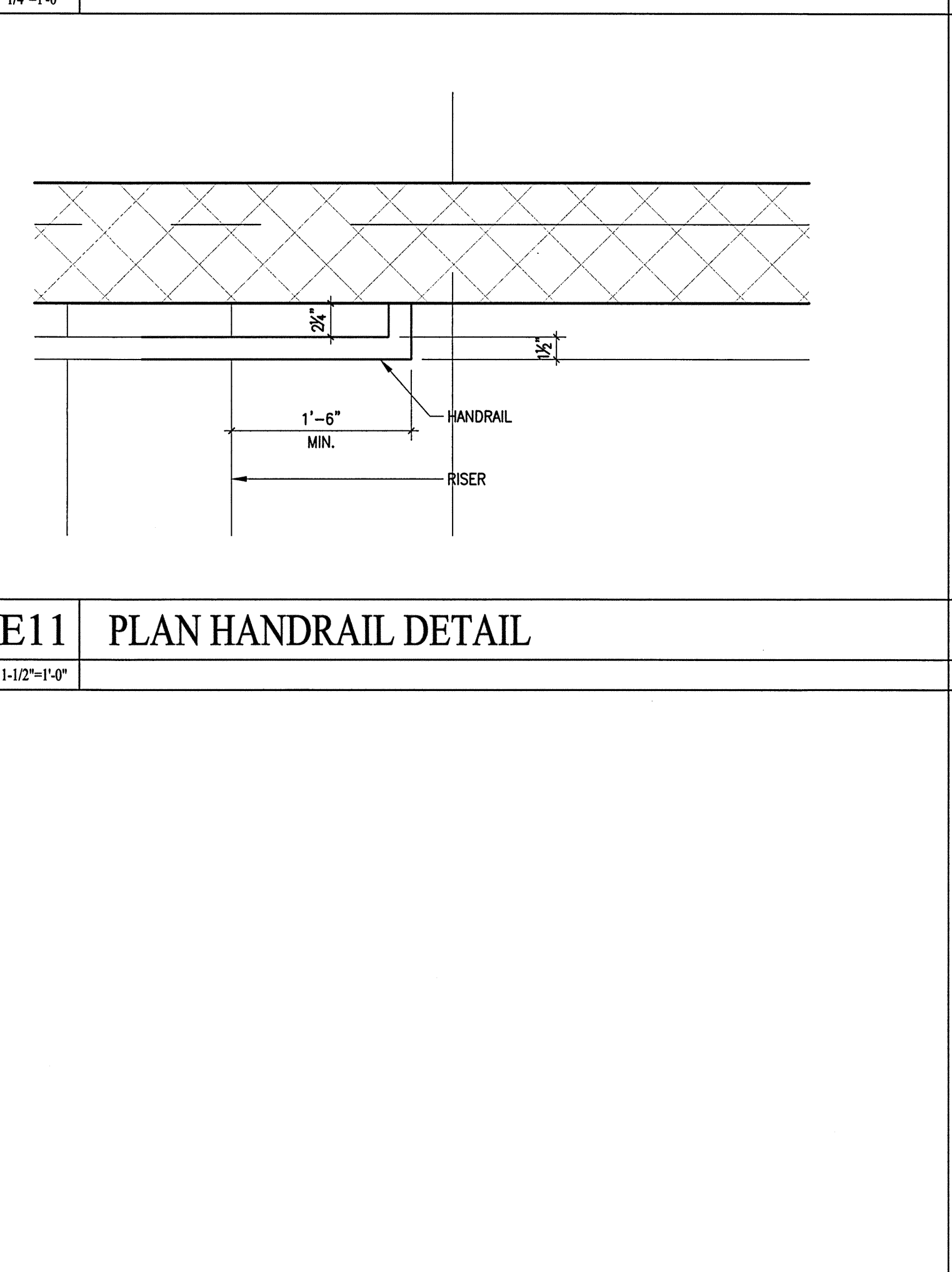
J16 STAIR 3 - 3RD FLOOR PLAN
1/4"=1'-0"



A6 RAMP - 1ST FLOOR PLAN
1/4"=1'-0"



E11 PLAN HANDRAIL DETAIL
1-1/2"=1'-0"



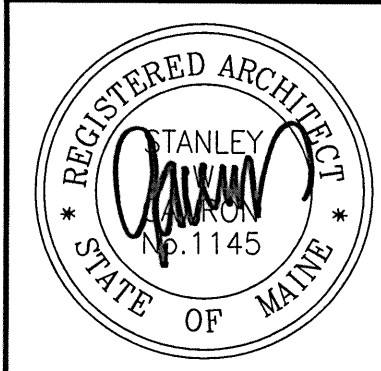
E16 SECTION/ELEVATION HANDRAIL DETAIL
1"=1'-0"

A1 NOT USED

A11 NOT USED

A11 NOT USED

A16 SECTION/ELEVATION HANDRAIL DETAIL
1"=1'-0"



Gawron Turgeon ARCHITECTS
29 Black Point Road
Scarborough, Maine 04074
www.gawronturgeon.com
207-883-6307 ext. 207-883-0261 fax



FLORENCE HOUSE
190 VALLEY STREET
PORTLAND, MAINE



REVISIONS		
#	DATE	DESCRIPTION
1	4.03.07	CONTRACT ZONE SUBMISSION
2	5.01.07	CONTRACT ZONE SUBMISSION
3	7.10.07	CONTRACT ZONE SUBMISSION
4	9.04.07	SITE PLAN AND SUBDIVISION REVIEW
5	10.02.07	FINAL SITE PLAN REVIEW
6	11.15.07	50% REVIEW SET
7	12.04.07	50% MAINE HOUSING REVIEW SET
8	05.02.08	90% MAINE HOUSING REVIEW SET
9	07.31.08	100% MAINE HOUSING REVIEW SET
10	09.02.08	100% BID DOCUMENTS

DATE:	09/02/08
PROJECT #:	100405
DRAWN BY:	
CHECKED BY:	RLD
DRAWING SCALE:	1/4"= 1'-0"

SHEET TITLE
VERTICAL CIRCULATION

A702

© COPYRIGHT 1985-2008
REPRODUCTION OR USE OF THIS DOCUMENT WITHOUT WRITTEN PERMISSION OF GAWRON TURGEON ARCHITECTS IS PROHIBITED.