

Gawron Turgeon ARCHITECTS
 29 Black Point Road
 Scarborough, Maine 04074
 www.gawronturgeon.com
 207-883-6307 or 207-883-0361 fax



FLORENCE HOUSE
 190 VALLEY STREET
 PORTLAND, MAINE



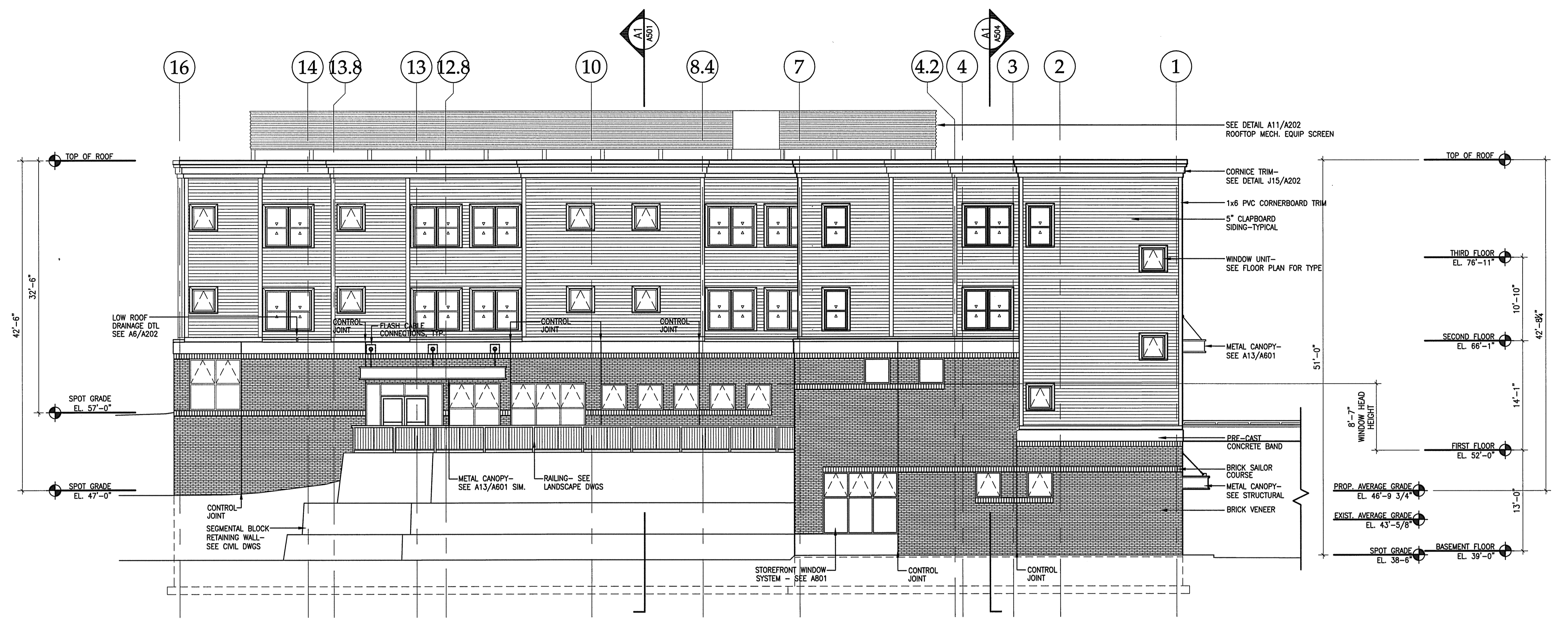
REVISIONS	
#	DATE DESCRIPTION
1	4.03.07 CONTRACT ZONE SUBMISSION
2	5.01.07 CONTRACT ZONE SUBMISSION
3	7.10.07 CONTRACT ZONE SUBMISSION
4	9.04.07 SITE PLAN AND SUBDIVISION REVIEW
5	10.02.07 FINAL SITE PLAN REVIEW
6	11.15.07 50% REVIEW SET
7	12.04.07 50% MAINE HOUSING REVIEW SET
8	05.02.08 90% MAINE HOUSING REVIEW SET
9	07.31.08 100% MAINE HOUSING REVIEW SET
10	09.02.08 100% BID DOCUMENTS

DATE:	09/02/08
PROJECT #:	100405
DRAWN BY:	RLD
CHECKED BY:	SWG
DRAWING SCALE:	1/8" = 1'-0"

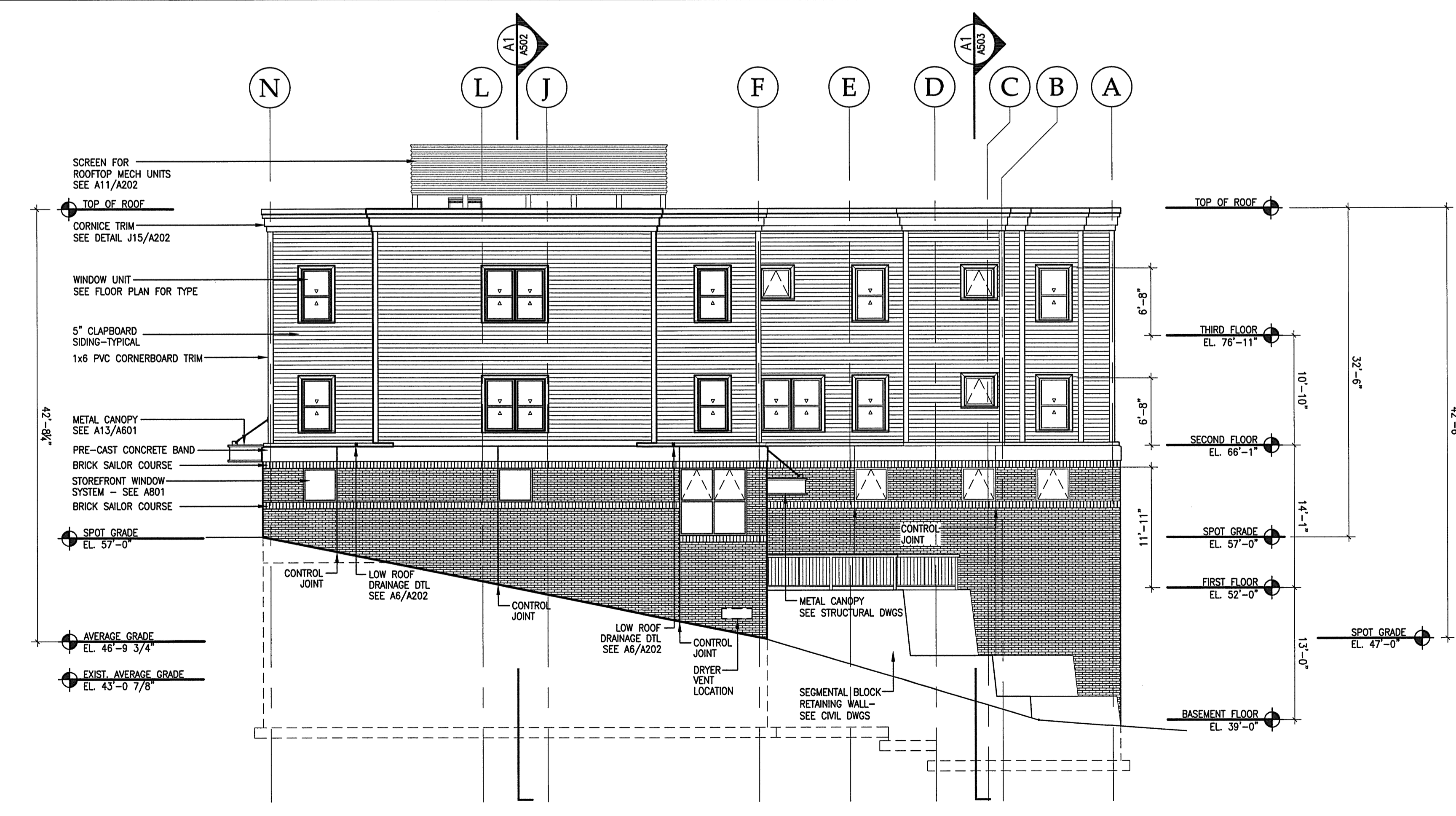
SHEET TITLE
 BUILDING ELEVATIONS

A402

© COPYRIGHT 1985-2008
 SIMULATION OR REUSE OF THIS DOCUMENT WITHOUT WRITTEN PERMISSION OF GAWRON TURGEON ARCHITECTS IS PROHIBITED



J1 WEST ELEVATION
 1/8" = 1'-0"



A1 NORTH ELEVATION
 1/8" = 1'-0"