

**Gawron Turgeon ARCHITECTS**  
 29 Black Point Road  
 Scarborough, Maine 04074  
 www.gawronturgeon.com  
 207-883-6307 tel 207-883-0361 fax



**FLORENCE HOUSE**  
 190 VALLEY STREET  
 PORTLAND, MAINE



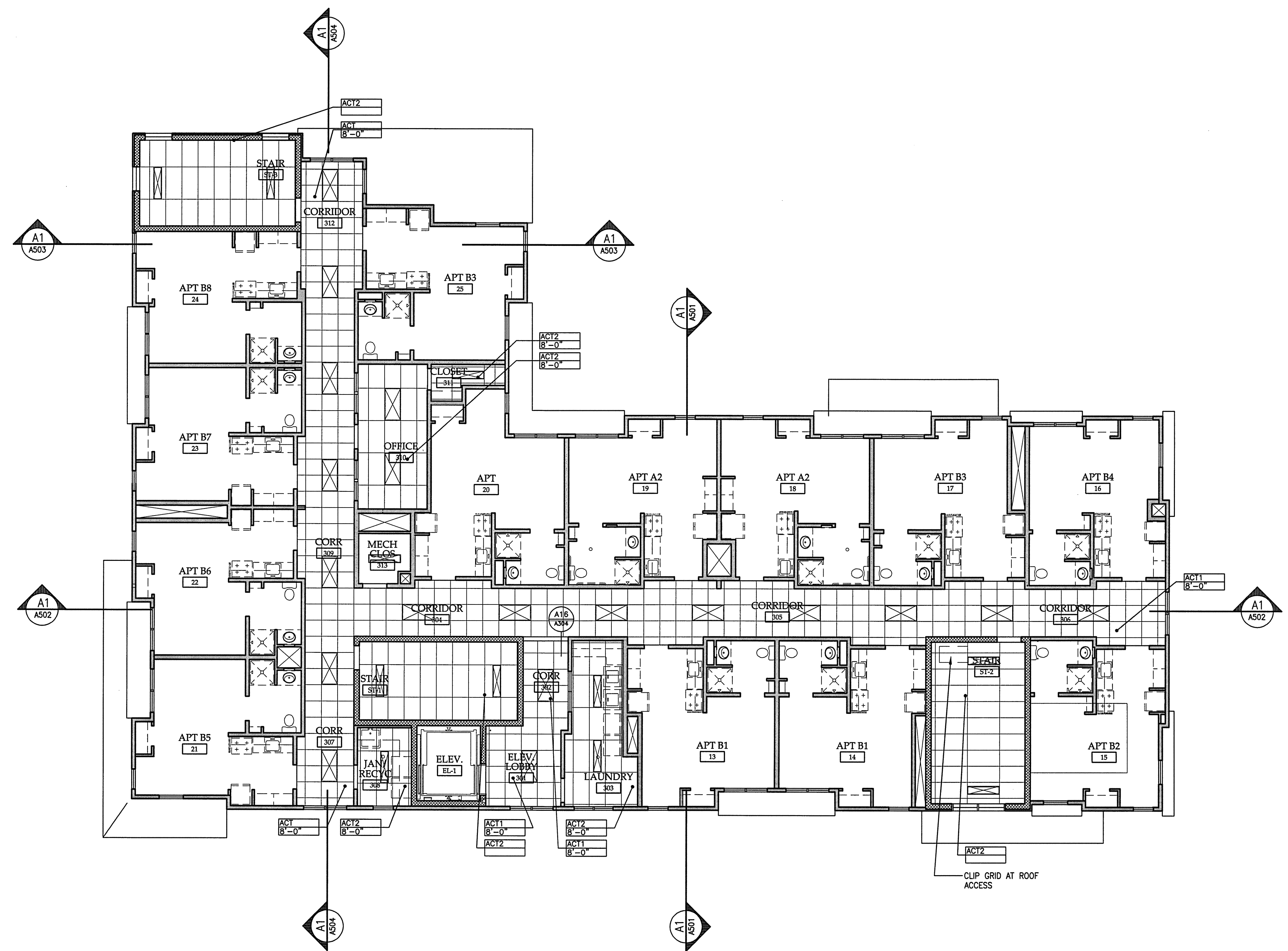
REVISIONS		
#	DATE	DESCRIPTION
1	4.03.07	CONTRACT ZONE SUBMISSION
2	5.01.07	CONTRACT ZONE SUBMISSION
3	7.10.07	CONTRACT ZONE SUBMISSION
4	9.04.07	SITE PLAN AND SUBDIVISION REVIEW
5	10.02.07	FINAL SITE PLAN REVIEW
6	11.15.07	50% MAINE HOUSING REVIEW SET
7	12.04.07	50% MAINE HOUSING REVIEW SET
8	05.02.08	90% MAINE HOUSING REVIEW SET
9	07.31.08	100% MAINE HOUSING REVIEW SET
10	09.02.08	100% BID DOCUMENTS

DATE:	09/02/08
PROJECT #:	100405
DRAWN BY:	RLA
CHECKED BY:	MET
DRAWING SCALE:	1/8" = 1'-0"

**SHEET TITLE**  
 THIRD FLOOR REFLECTED CEILING PLAN

**A 303**

© COPYRIGHT 1985-2008  
 REPRODUCTION OR USE OF THIS DOCUMENT WITHOUT WRITTEN PERMISSION OF GAWRON TURGEON ARCHITECTS IS PROHIBITED.



**LIGHTING LEGEND**

- 2x4
- 1x4
- LINEAR PENDANT
- DOWNLIGHT
- UNDER CABINET STRIP, REFER TO INTERIOR ELEVATION
- WALL SCONCE
- DECORATIVE VANITY LIGHT BAR
- DECORATIVE CLOSE-TO-CEILING
- DECORATIVE FLUSH MOUNT
- FAN/ LIGHT UNIT
- DECORATIVE LARGE PENDANT

**NOTES:**

1. INTERIOR FIXTURE LEGEND FOR DESIGN INTENT ONLY. REFER TO ELECTRICAL DRAWINGS FOR LIGHT FIXTURE TYPES AND CIRCUITING. ELECTRICAL ENGINEER TO VERIFY PHOTOMETRIC LEVELS MEET CODE IN ALL OF THE ROOMS. COORDINATE DISCREPANCIES WITH ARCHITECT PRIOR TO INSTALLATION.
2. MECHANICAL SUBCONTRACTOR TO VERIFY SIZE AND LOCATION OF ANY MECHANICAL REGISTERS WITH ARCHITECT PRIOR TO CONSTRUCTION. LIGHTING LOCATIONS SHALL TAKE PRECEDENCE.
3. ALL PENETRATIONS IN RATED FLOORS/CEILING ASSEMBLIES SHALL BE FIRE STOPPED AND DRAFT STOPPED APPROPRIATE TO RATINGS.

**A1 THIRD FLOOR REFLECTED CEILING PLAN**  
 1/8" = 1'-0"

**A18 LEGEND**  
 NA REFLECTED CEILING PLAN

