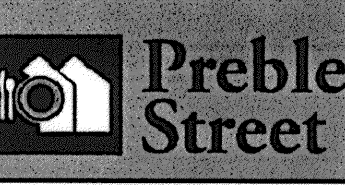


**Gawron Turgeon ARCHITECTS**  
 29 Black Point Road  
 Scarborough, Maine 04074  
 www.gawronturgeon.com  
 207-883-6307 ext. 207-883-6361 fax



**FLORENCE HOUSE**  
 190 VALLEY STREET  
 PORTLAND, MAINE



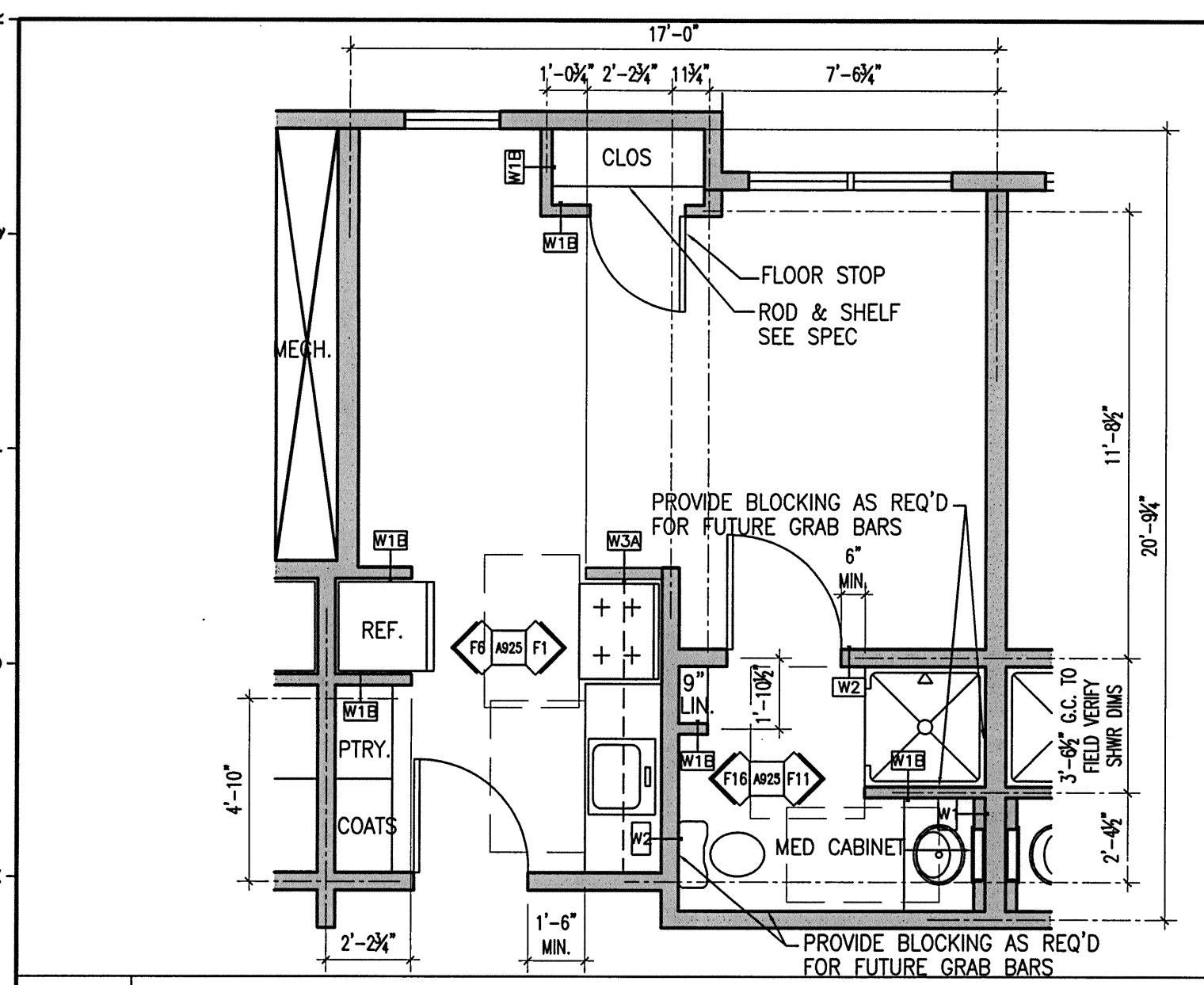
REVISIONS		
#	DATE	DESCRIPTION
1	4.03.07	CONTRACT ZONE SUBMISSION
2	5.01.07	CONTRACT ZONE SUBMISSION
3	7.10.07	CONTRACT ZONE SUBMISSION
4	9.04.07	SITE PLAN AND SUBDIVISION REVIEW
5	10.02.07	FINAL SITE PLAN REVIEW
6	11.15.07	50% REVIEW SET
7	12.04.07	50% MAINE HOUSING REVIEW SET
8	05.02.08	90% MAINE HOUSING REVIEW SET
9	07.31.08	100% MAINE HOUSING REVIEW SET
10	09.02.08	100% BID DOCUMENTS

DATE	09/02/08
PROJECT #	100405
DRAWN BY:	AEP
CHECKED BY:	RLD
DRAWING SCALE	1/4" = 1'-0"

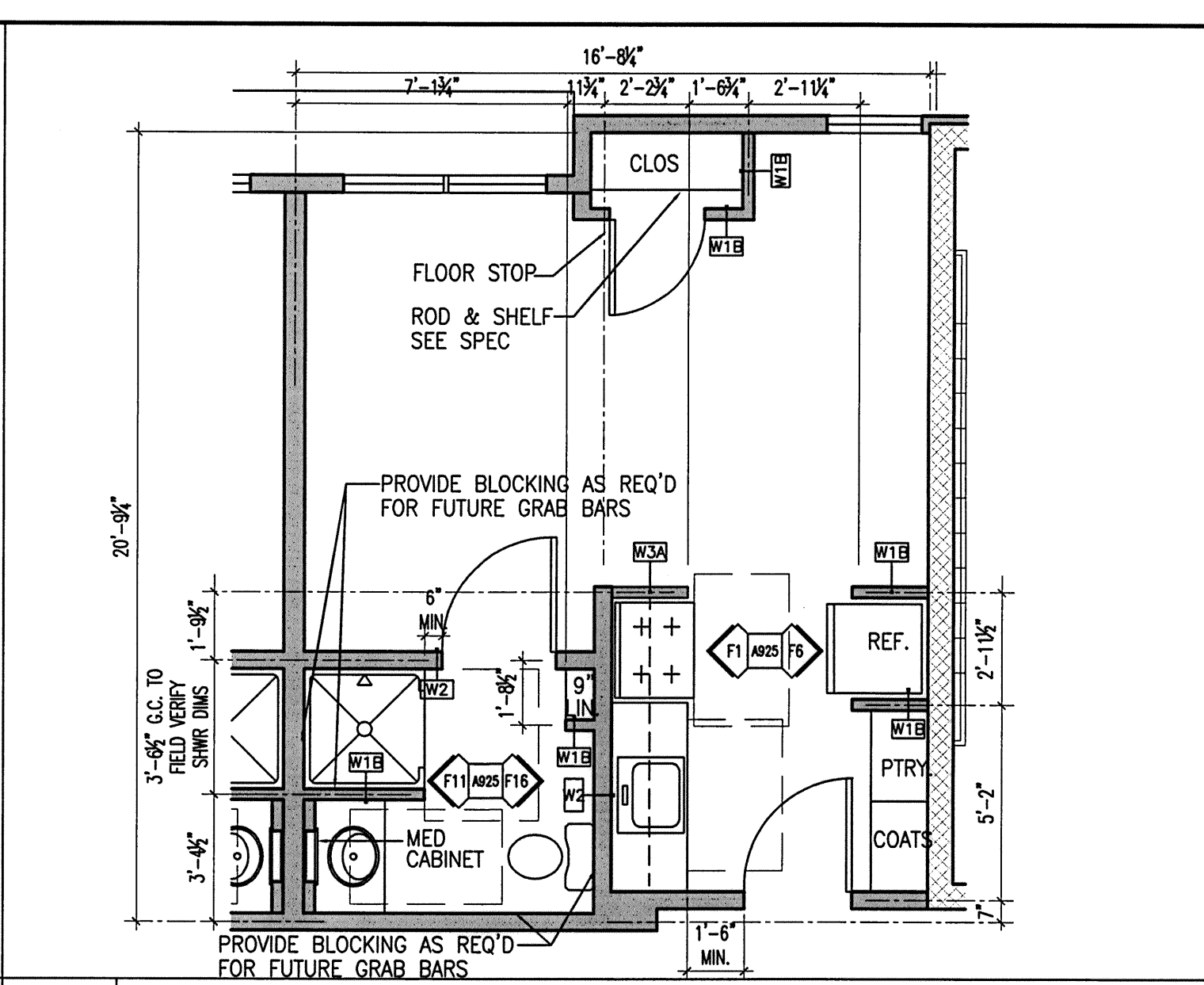
SHEET TITLE  
 TYPICAL UNIT PLANS

**A 104**

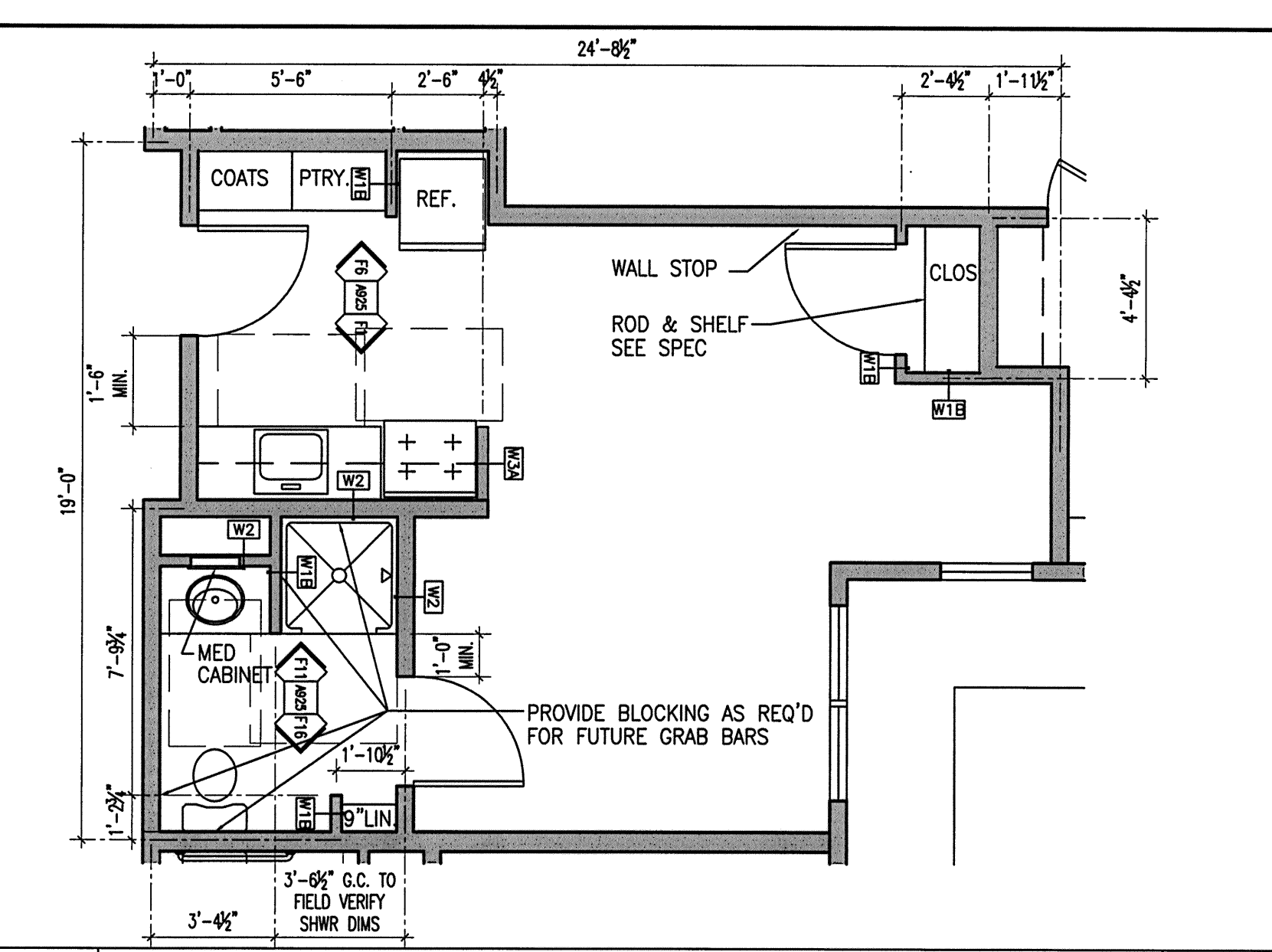
© COPYRIGHT 1985-2008  
 REPRODUCTION OR INURE OF THIS DOCUMENT WITHOUT WRITTEN PERMISSION OF GAWRON TURGEON ARCHITECTS IS PROHIBITED.



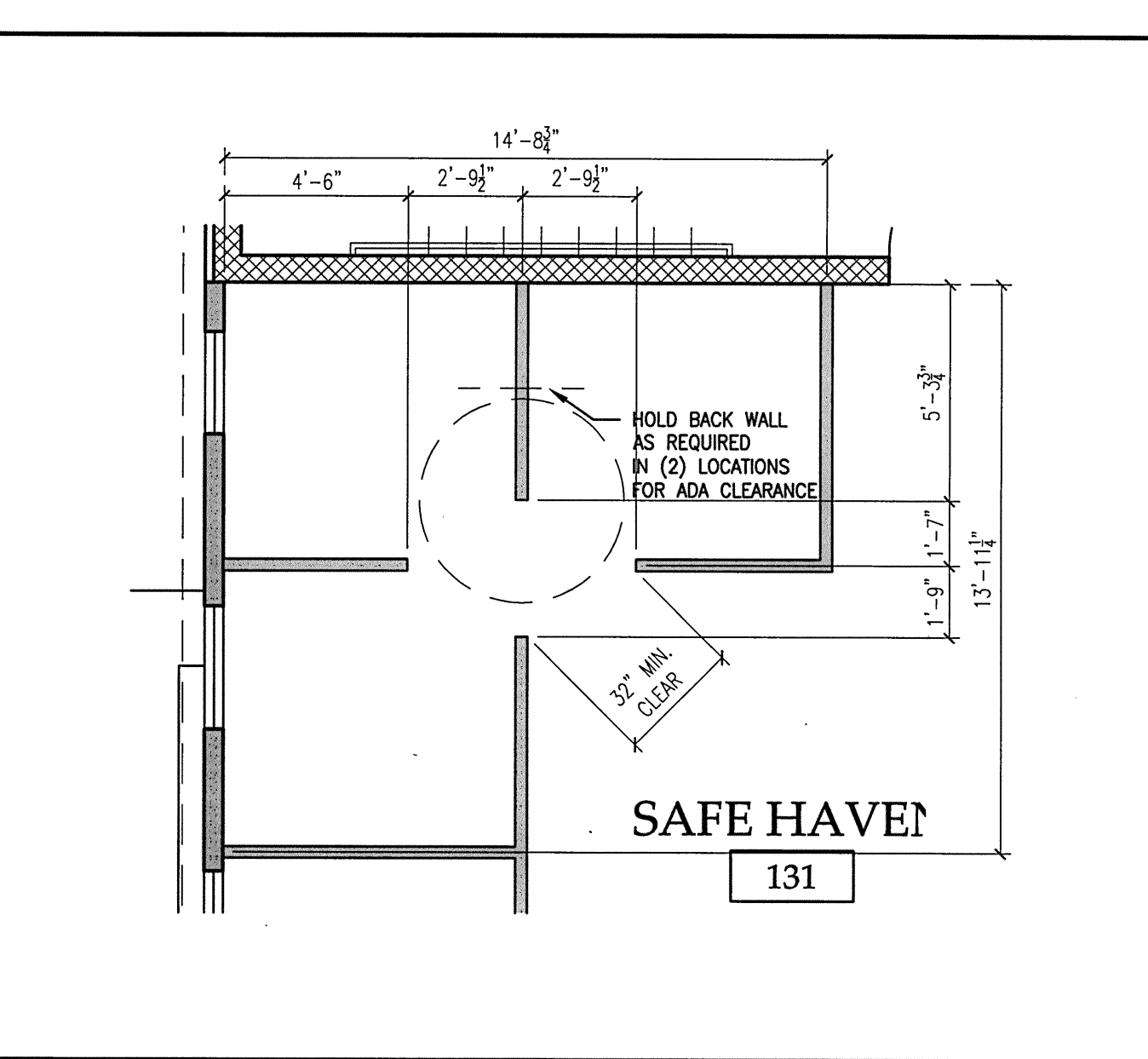
**M1 TYPICAL "B7" APARTMENT PLAN**  
 1/4"=1'-0" 223 HABITABLE SF, 338 GROSS SF- APARTMENTS 10, 23



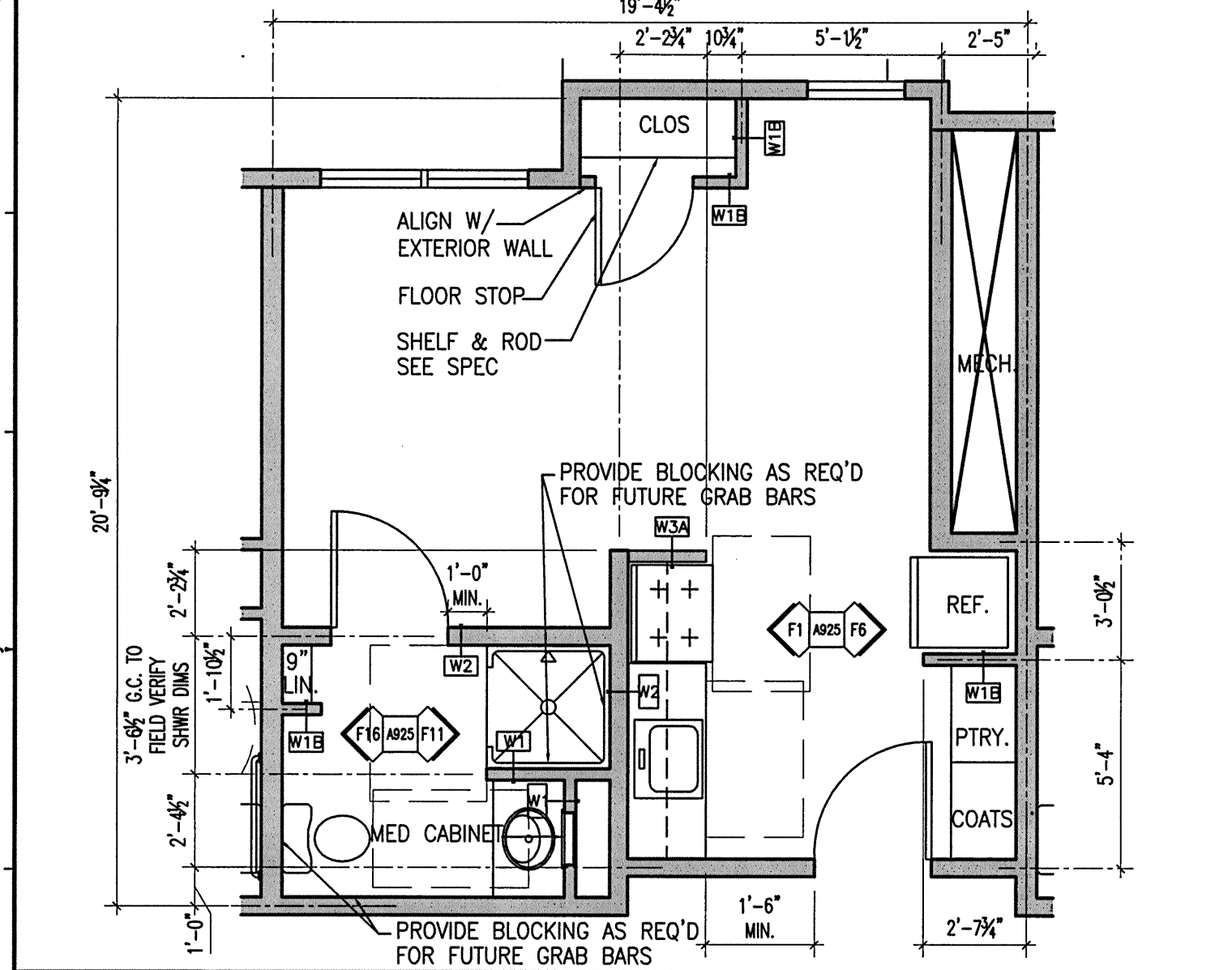
**M6 TYPICAL "B8" APARTMENT PLAN**  
 1/4"=1'-0" 223 HABITABLE SF, 336 GROSS SF- APARTMENTS 11, 24



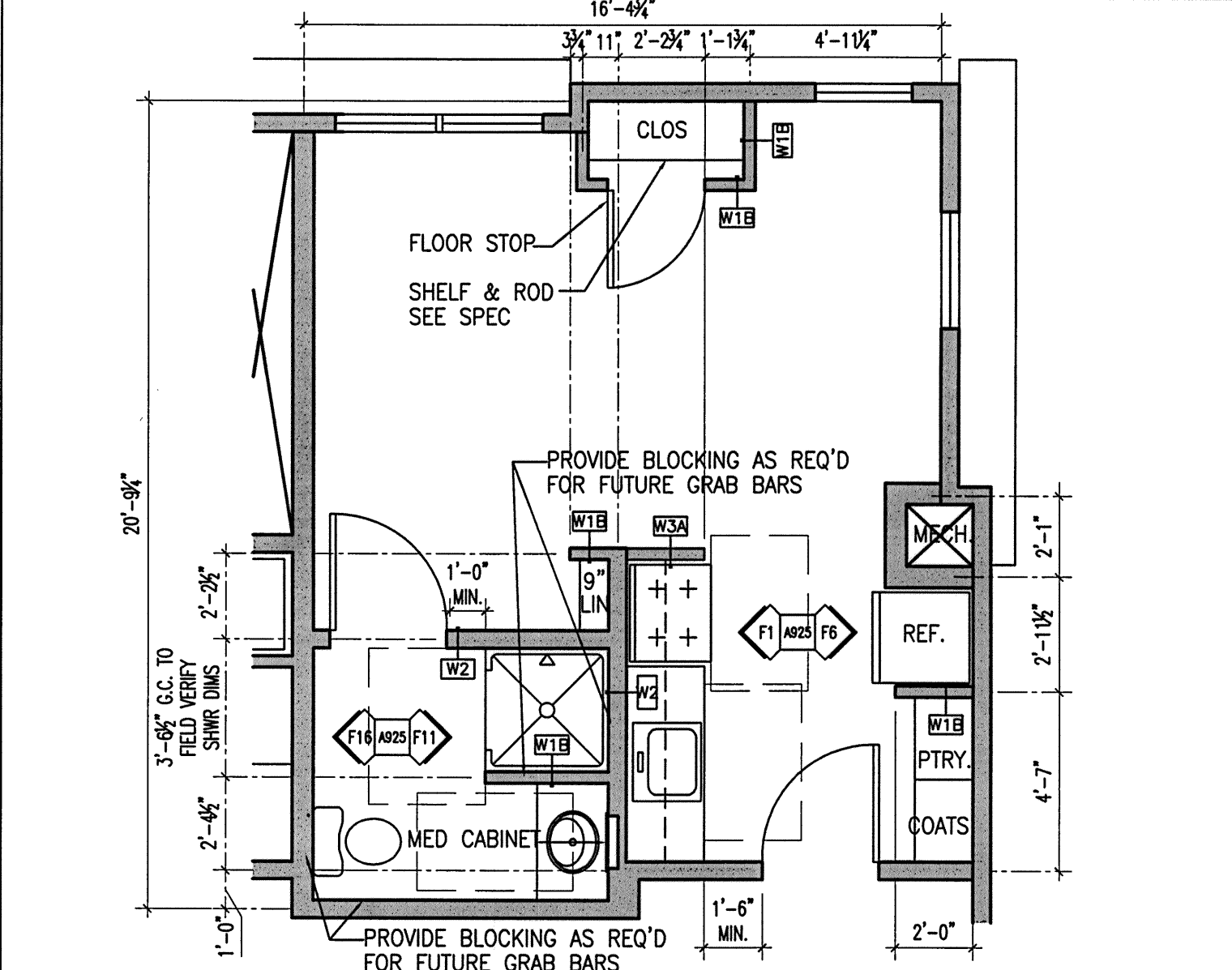
**M11 TYPICAL "B9" APARTMENT PLAN**  
 1/4"=1'-0" 253 HABITABLE SF, 371 GROSS SF- APARTMENT 20



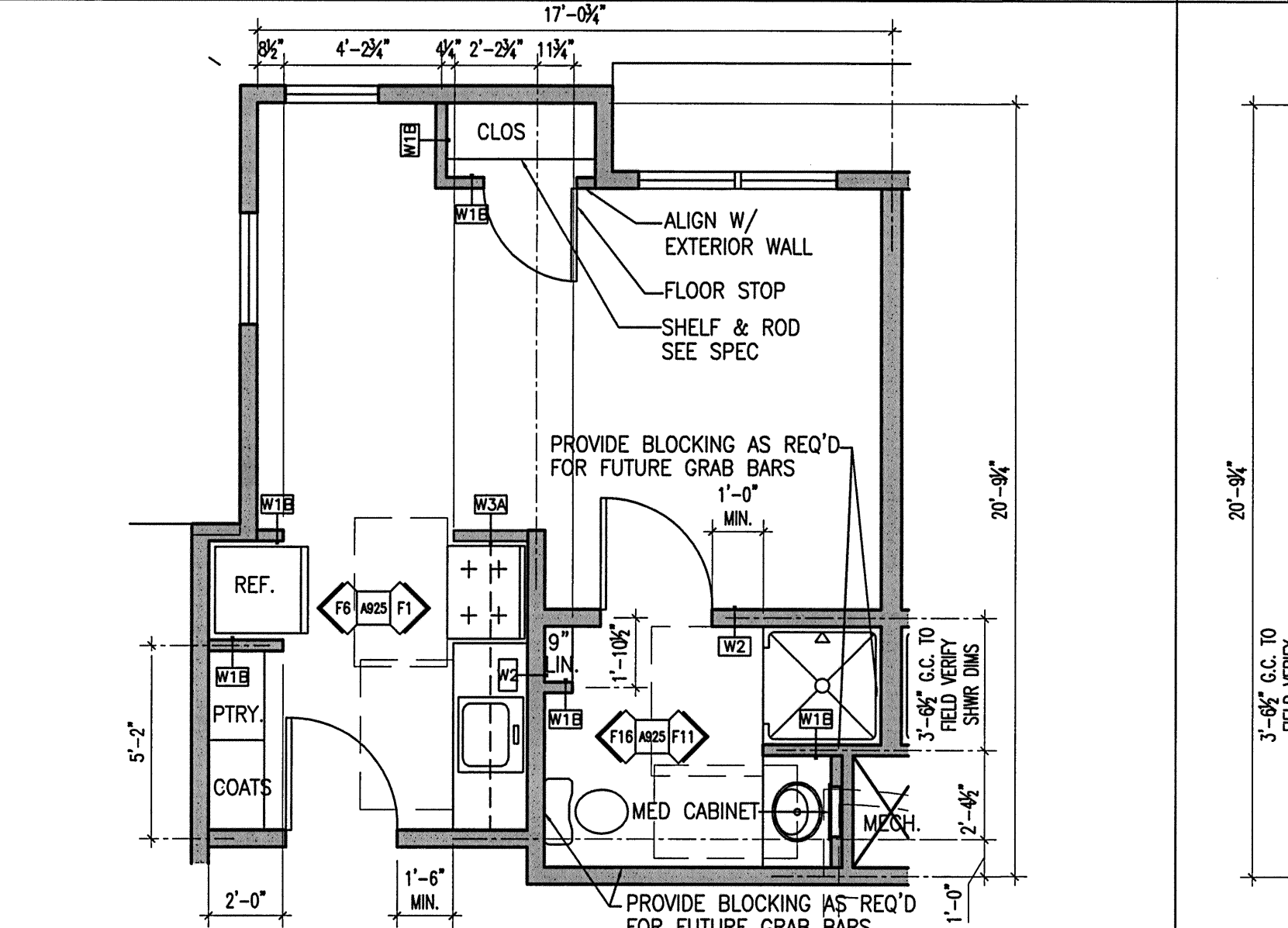
**M16 TYPICAL SAFE HAVEN PLAN**  
 1/4"=1'-0"



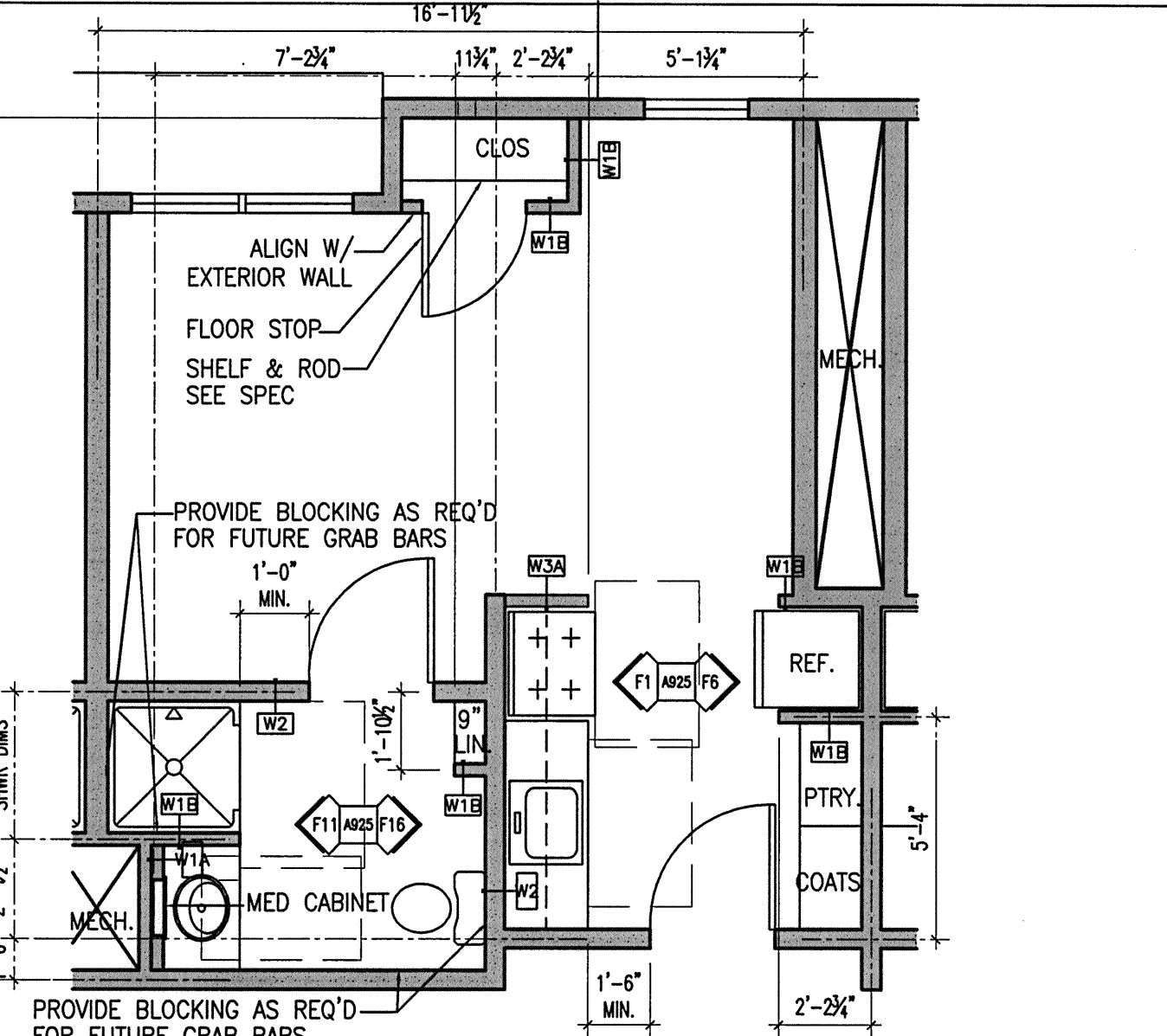
**G1 TYPICAL "B3" APARTMENT PLAN**  
 1/4"=1'-0" 229 HABITABLE SF, 349 GROSS SF- APARTMENTS 6, 12, 17, 25



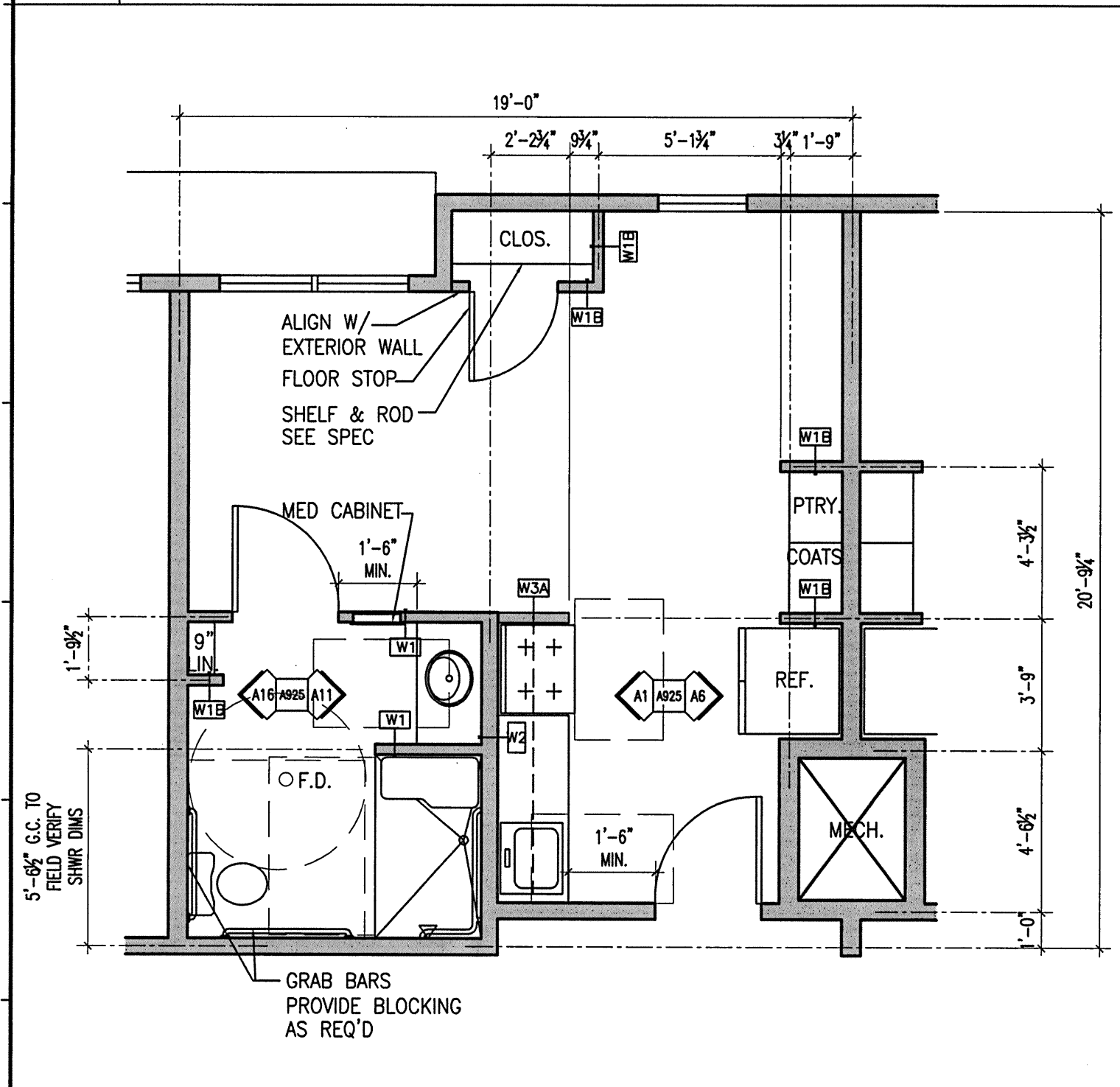
**G6 TYPICAL "B4" APARTMENT PLAN**  
 1/4"=1'-0" 220 HABITABLE SF, 333 GROSS SF - APARTMENTS 7, 16



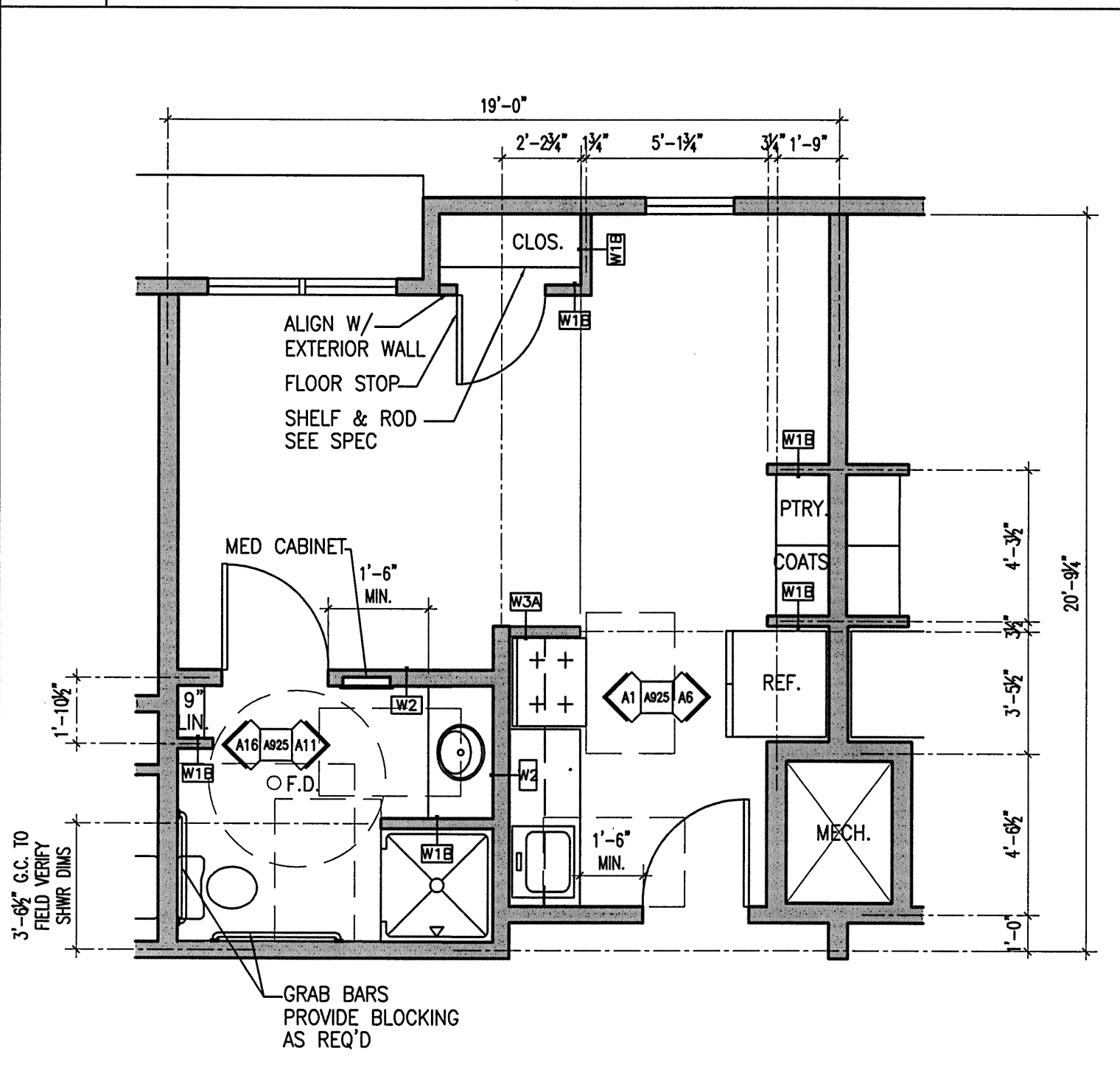
**G11 TYPICAL "B5" APARTMENT PLAN**  
 1/4"=1'-0" 222 HABITABLE SF, 348 GROSS SF - APARTMENTS 8, 21



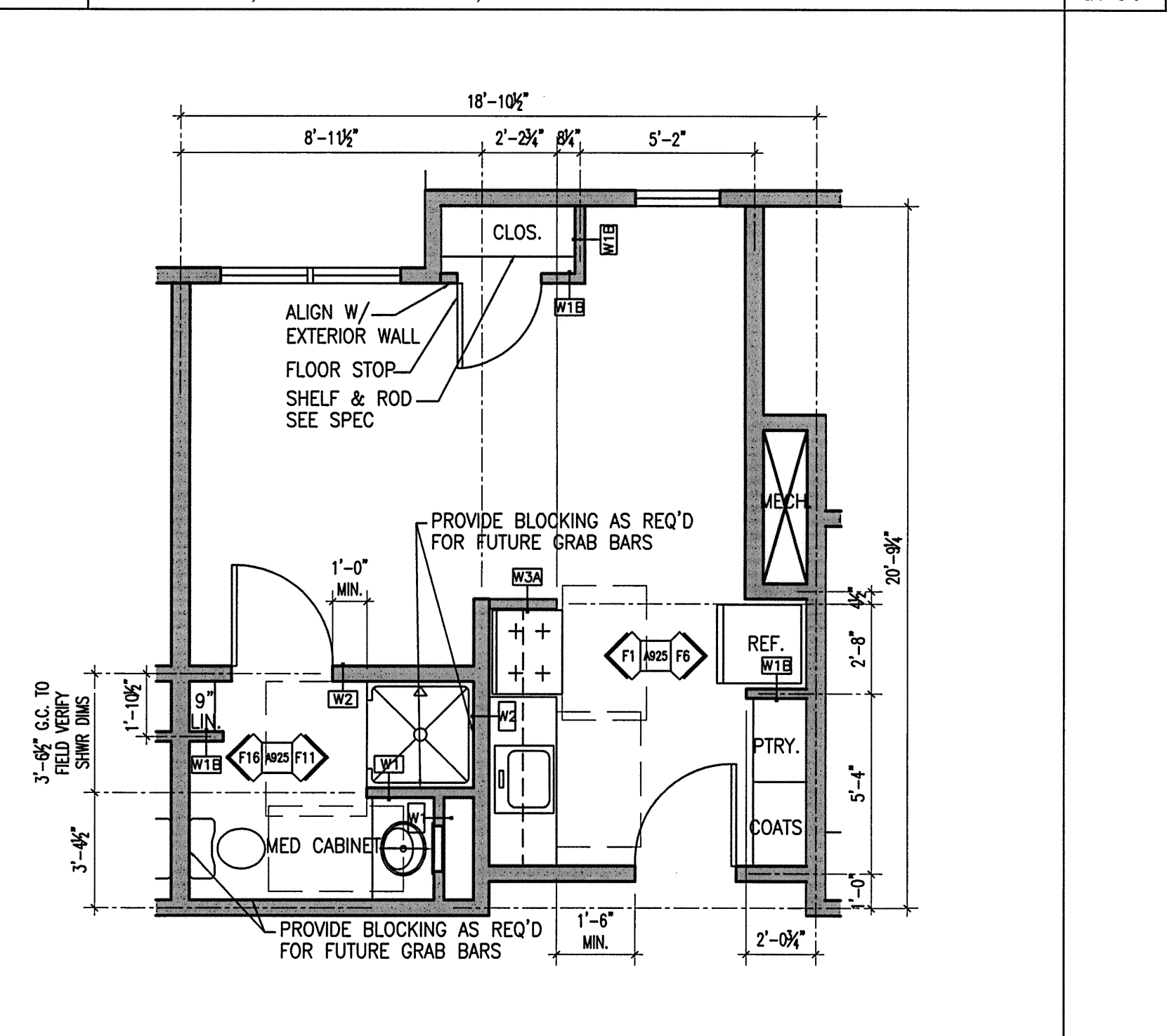
**G16 TYPICAL "B6" APARTMENT PLAN**  
 1/4"=1'-0" 220 HABITABLE SF, 340 GROSS SF- APARTMENTS 9, 22



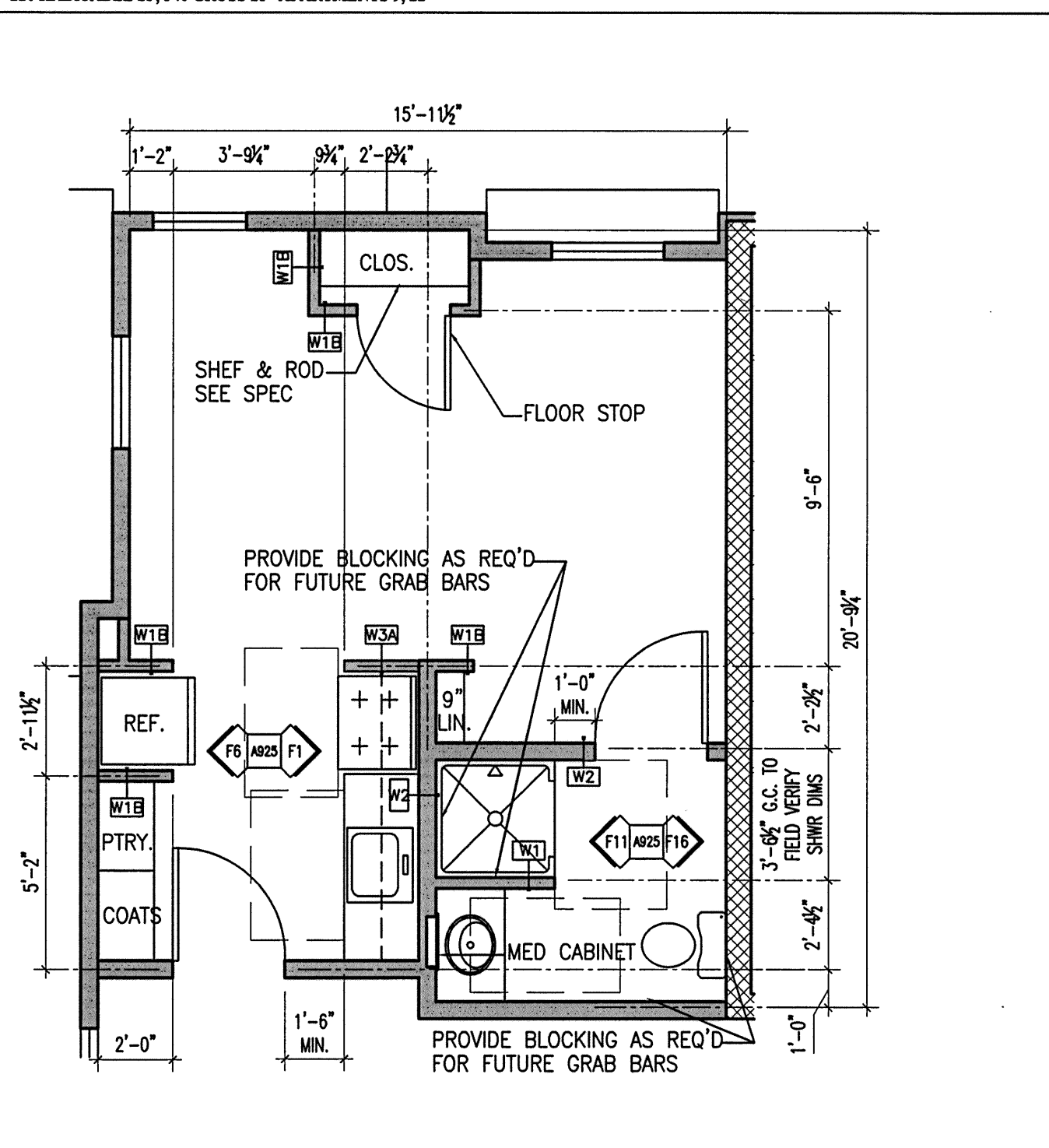
**A1 TYPICAL "A1" ADA APARTMENT PLAN**  
 1/4"=1'-0" 221 HABITABLE SF, 368 GROSS SF- APARTMENTS 2, 4



**A6 TYPICAL "A2" ADA APARTMENT PLAN**  
 1/4"=1'-0" 230 HABITABLE SF, 360 GROSS SF- APARTMENTS 18, 19



**A11 TYPICAL "B1" APARTMENT PLAN**  
 1/4"=1'-0" 225 HABITABLE SF, 343 GROSS SF- APARTMENTS 1, 13, 3 SIM., 14 SIM.



**A16 TYPICAL "B2" APARTMENT PLAN**  
 1/4"=1'-0" 220 HABITABLE SF, 328 GROSS SF- APARTMENTS 5, 15